

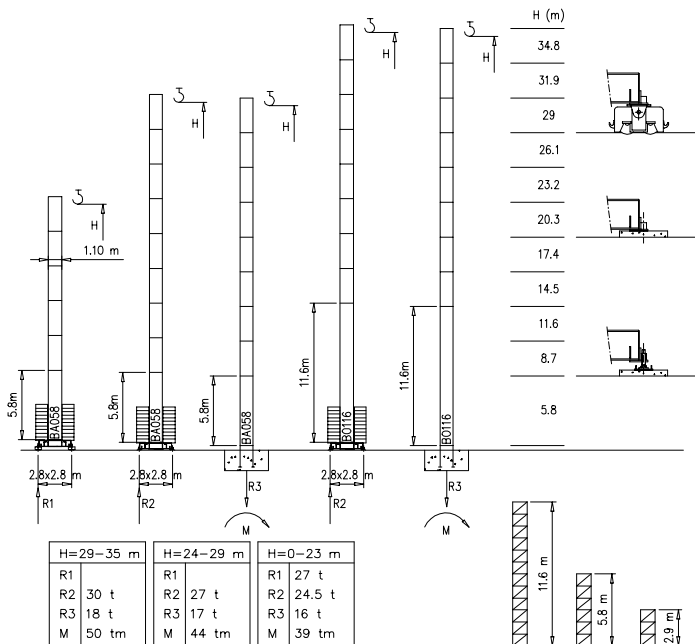
■ S1100 – 1.10x1.10 m

○ S1210 – 1.21x1.21 m

* V15.40 – S15.40 – V20.60

S1100

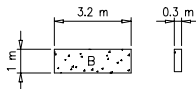
20 m → 35 m



Peso zavorra – Ballast weight – Poids du lest – Ballastgewicht – Peso de lastre

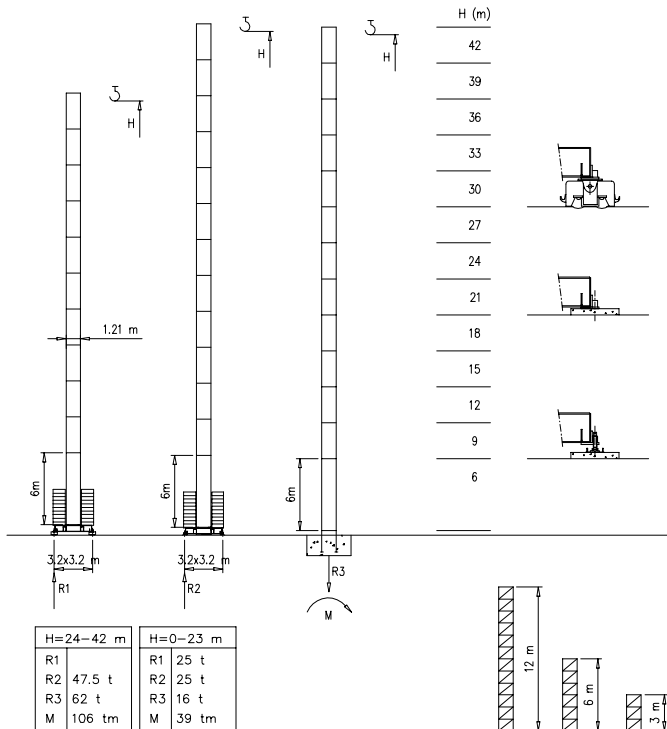


H	n°	Tot.
0-12 m	14 B	30800 kg
13-30 m	18 B	39600 kg
31-35 m	20 B	44000 kg



S1210

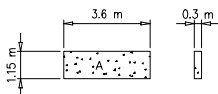
20 m → 35 m



Peso zavorra - Ballast weight - Poids du lest - Ballastgewicht - Peso de lastre

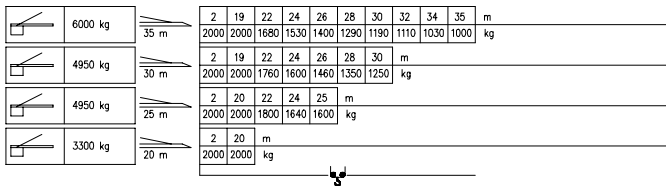


H	n°	Tot.
0-24 m	12 A	36000 kg
25-36 m	16 A	48000 kg
37-42 m	18 A	54000 kg

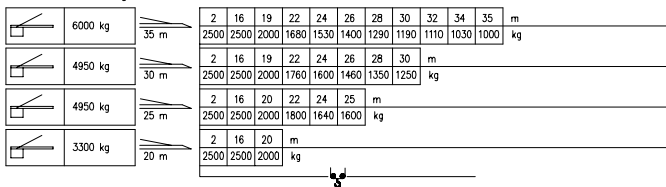


Curve di carico – Courbes de charges – Load diagrams – LastKurven – Curvas de cargas

Pmax 2000 kg



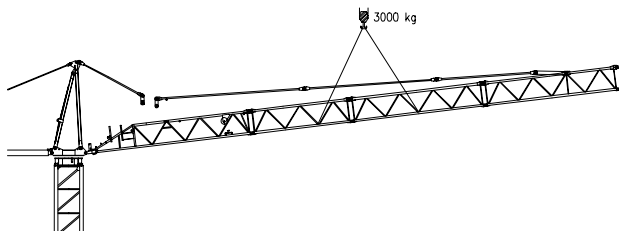
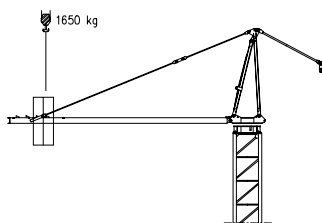
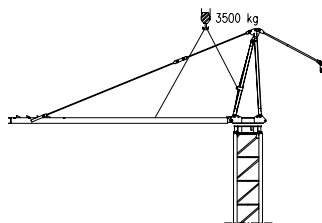
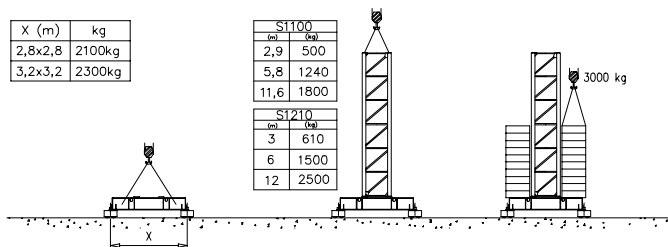
Pmax 2500 kg



X (m)	kg
2,8x2,8	2100kg
3,2x3,2	2300kg

S1100	
(m)	(kg)
2,9	500
5,8	1240
11,6	1800

S1210	
(m)	(kg)
3	610
6	1500
12	2500



Meccanismi – Mechanisms – Mécanismes – Antriebe – Mecanismos

Sollevamento S9.30 e V10.30 Hoisting Levage Heben Elevación Elevação			1a	4 m/min	2000 kg	7 kW	S9.30	Potenza elettrica necessaria Puissance électrique nécessaire Necessary electric power Anschlusswert Potencia
Sollevamento S15.40 e V15.40 Hoisting Levage Heben Elevación Elevação			2a	16 m/min	2000 kg		15 kVA	
			3a	32 m/min	1000 kg		V10.30	
		1a	4 m/min	2500 kg	11 kW	S15.40		
2a		20 m/min	2500 kg	21 kVA				
3a		40 m/min	1200 kg	V15.40				
Sollevamento V20.60 Hoisting Levage Heben Elevación Elevação		1a	7 m/min	2500 kg	14.7 kW	V20.60		
		2a	28 m/min	2500 kg		23 kVA		
		3a	56 m/min	1200 kg				
Carrello Trolleying Distribution Katzfahren Distribución Distribuição			1a	OP 5 m/min	2500 kg	1.5 kW	Potenza elettrica necessaria Puissance électrique nécessaire Necessary electric power Anschlusswert Potencia	
Rotazione Slewing Orientation Schwenken Orientación Rotação			2a	17 m/min	2500 kg			
			3a	34 m/min	1000 kg			
	1a	0 → 0.2	giri/min	2.2 kW @ 1200rpm				
2a	0 → 0.5	tr/min						
3a	0 → 0.8	rp/min						
Traslazione Travelling Translation Kranfahren Traslación Translação			1a	0 → 20	3.7 kW			

Rete elettrica – Réseau – Mains supply – Netzstrom – Red – Rede electrica

400V – 50 Hz



FMGrü s.r.l.

via Emilia 11-29010 Pontenure (PC) ITALY
tel. 0523/510446 ric.aut. fax 0523/510355
www.fmgru.com e-mail: info@fmgru.com

FEM 1.001
2000/14/CE



Documento commerciale non contraffare
Per tutte le informazioni tecniche riferirsi
alle corrispondenti istruzioni

Unverbindliches Verkaufsdocument.
Für technische Informationen, siehe die
entsprechenden Anweisungen.

This commercial document is not legally
binding. For any technical information, please
refer to the corresponding instructions.

Documento comercial no contrafactar
Para cualquier información técnica,
ver la notificación correspondiente.

Code: 15ICA37C20A0
Ed./Data Rev./Date
1 05.06.03 05.06.03