

■ MONOTRIPHASE
○ TRIPHASE


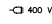

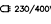

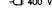



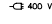

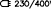
⏏ 230/400 V
⏏ 400 V

GRU A MONTAGGIO RAPIDO
GRUE A MONTAGE RAPIDE
GRUA DE RAPIDO MONTAJE
GRUA DE MONTAGEM RAPIDA
QUICK SELFERECTING CRANE
HYDRAULISCHER SCHNELLMONTAGEKRAN

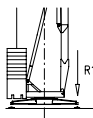


DIN H1 - B3

Curve di carico – Courbes de charges – Load diagrams – Lastkurven – Curvas de cargas

		<table><tr><td>3</td><td>21</td><td>23</td><td>25</td></tr><tr><td>600</td><td>600</td><td>600</td><td>600</td></tr></table>				3	21	23	25	600	600	600	600	m			<table><tr><td>3</td><td>21</td><td>23</td><td>25</td></tr><tr><td>500</td><td>500</td><td>500</td><td>500</td></tr></table>				3	21	23	25	500	500	500	500	m	kg				
3		21	23	25																														
600	600	600	600																															
3	21	23	25																															
500	500	500	500																															
TRIPHASE																																		
		<table><tr><td>3</td><td>10.8</td><td>12</td><td>14</td><td>16</td><td>18</td><td>20</td><td>22</td><td>24</td><td>26</td></tr><tr><td>2000</td><td>2000</td><td>1765</td><td>1465</td><td>1250</td><td>1080</td><td>950</td><td>850</td><td>760</td><td>700</td></tr></table>										3	10.8	12	14	16	18	20	22	24	26	2000	2000	1765	1465	1250	1080	950	850	760	700	m		kg
		3	10.8	12	14	16	18	20	22	24	26																							
		2000	2000	1765	1465	1250	1080	950	850	760	700																							
		<table><tr><td>3</td><td>11.8</td><td>12</td><td>14</td><td>16</td><td>18</td><td>20</td><td>22</td><td>24</td></tr><tr><td>2000</td><td>2000</td><td>1930</td><td>1600</td><td>1365</td><td>1185</td><td>1045</td><td>930</td><td>850</td></tr></table>										3	11.8	12	14	16	18	20	22	24	2000	2000	1930	1600	1365	1185	1045	930	850	m		kg		
		3	11.8	12	14	16	18	20	22	24																								
		2000	2000	1930	1600	1365	1185	1045	930	850																								
<table><tr><td>3</td><td>12.4</td><td>14</td><td>16</td><td>18</td><td>20</td><td>22</td></tr><tr><td>2000</td><td>2000</td><td>1720</td><td>1480</td><td>1230</td><td>1100</td><td>1000</td></tr></table>										3	12.4	14	16	18	20	22	2000	2000	1720	1480	1230	1100	1000	m		kg								
3	12.4	14	16	18	20	22																												
2000	2000	1720	1480	1230	1100	1000																												
		<table><tr><td>3</td><td>13</td><td>14</td><td>16</td><td>18</td><td>20</td><td>22</td><td>24</td><td>26</td></tr><tr><td>1500</td><td>1500</td><td>1465</td><td>1250</td><td>1080</td><td>950</td><td>850</td><td>760</td><td>700</td></tr></table>										3	13	14	16	18	20	22	24	26	1500	1500	1465	1250	1080	950	850	760	700	m		kg		
		3	13	14	16	18	20	22	24	26																								
		1500	1500	1465	1250	1080	950	850	760	700																								
		<table><tr><td>3</td><td>15</td><td>16</td><td>18</td><td>20</td><td>22</td><td>24</td></tr><tr><td>1500</td><td>1500</td><td>1365</td><td>1185</td><td>1045</td><td>930</td><td>850</td></tr></table>										3	15	16	18	20	22	24	1500	1500	1365	1185	1045	930	850	m		kg						
		3	15	16	18	20	22	24																										
		1500	1500	1365	1185	1045	930	850																										
<table><tr><td>3</td><td>15.5</td><td>16</td><td>18</td><td>20</td><td>22</td></tr><tr><td>1500</td><td>1500</td><td>1480</td><td>1230</td><td>1100</td><td>1000</td></tr></table>										3	15.5	16	18	20	22	1500	1500	1480	1230	1100	1000	m		kg										
3	15.5	16	18	20	22																													
1500	1500	1480	1230	1100	1000																													
		<table><tr><td>3</td><td>12</td></tr><tr><td>2000</td><td>2000</td></tr></table>		3	12	2000	2000	m				<table><tr><td>3</td><td>12</td></tr><tr><td>1500</td><td>1500</td></tr></table>		3	12	1500	1500	m		kg														
		3	12																															
2000	2000																																	
3	12																																	
1500	1500																																	
TRIPHASE																																		

Reazioni – Reactions – Réactions – Eckdrücke – Reacciones – Reacções



R1 ● 11.2 t ■ 7.7 t

▲ 8.2 t ○ 13.4 t

● Reazioni in servizio

■ Reazioni fuori servizio

▲ Peso della gru senza assali

○ Peso zavorra rotante

● Reactions in service

■ Reactions out of service

▲ Dead weight without transport axles

○ Ballast weight

● Réactions en service

■ Réactions hors service

▲ Poids de construction sans essieux

○ Poids du lest

● Reaktionskräfte in betrieb

■ Reaktionskräfte außer betrieb

▲ Konstruktionsgewicht ohne transportachse

○ Ballastgewicht

● Reacciones en servicio

■ Reacciones fuera de servicio

▲ Peso de la grúa sin tren de transporte

○ Peso de lastre

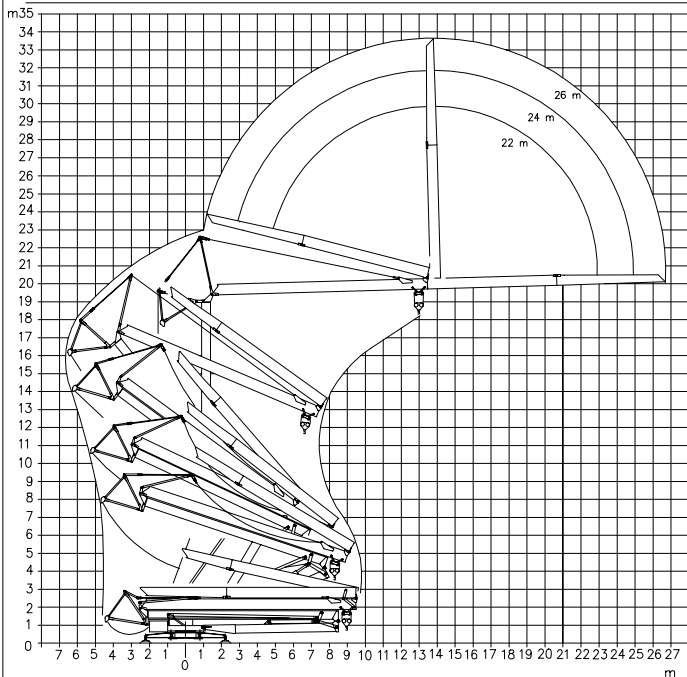
● Em serviço

■ Fora de serviço

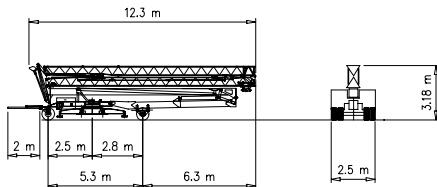
▲ Peso de la grúa sem carro de transporte

○ Peso de lastre rotativo

Montaggio – Montage – Erection – Montage – Montaje



Trasporto – Transport – Transport – Transport – Transporte



P1	kg	5620
P2	kg	9300
Ptot	kg	14920

Meccanismi – Mechanisms – Mécanismes – Antriebe – Mecanismos – Montagem

TRIPHASE	Sollevamento Hoisting Levage Heben Elevación Elevação			1a	4 m/min	2000 kg	4.4 kW
				2a	16 m/min	2000 kg	
				3a	32 m/min	1000 kg	
	Carrello Trolleying Distribution Katzfahren Distribución Distribuição			1a	30 m/min	600 kg	1.5 kW
				1a	15 m/min	2000 kg	
				2a	30 m/min	1000 kg	
1/3PH Inverter	Rotazione Slewing Orientation Schwenken Orientación Rotação			giri/min 0.8 tr/min rp/min			2.2 kW
	Sollevamento Hoisting Levage Heben Elevación Elevação	230V		1a	4 m/min	1500 kg	5.5 kW
				2a	11 m/min	1500 kg	
				3a	25 m/min	700 kg	
		400V		1a	4 m/min	1500 kg	
				2a	16 m/min	1500 kg	
				3a	30 m/min	700 kg	
	Carrello Trolleying Distribution Katzfahren Distribución Distribuição	230V		1a	4 m/min	1500 kg	5.5 kW
				2a	11 m/min	1500 kg	
				3a	30 m/min	700 kg	
		400V		1a	4 m/min	1500 kg	
				2a	16 m/min	1500 kg	
				3a	30 m/min	700 kg	
	Rotazione Slewing Orientation Schwenken Orientación Rotação			1a	30 m/min	500 kg	1.85 kW
				1a	15 m/min	1500 kg	
				2a	30 m/min	700 kg	
	Rotazione Slewing Orientation Schwenken Orientación Rotação			giri/min 0.8 tr/min rp/min			2.2 kW

Rete elettrica – Réseau – Mains supply – Netzstrom – Red – Rede electrica 400V – 50 Hz

Potenza elettrica necessaria – Puissance électrique nécessaire
Necessary electric power – Anschlusswert – Potencia eléctrica necesaria 3PH 12 kVA
1/3PH 11 kVA



FMgru s.r.l.

via Emilia 11-29010 Pontenure PC ITALY
tel. 0523/510446 ric.aut. fax 0523/510355
www.fmgru.com e-mail: info@fmgru.com

DIN 15018
2000/14/CE



Documento commerciale non controllato
Per tutte le informazioni tecniche riferirsi
alle corrispondenti istruzioni

Unerkündliches Vertriebsdokument.
Für technische Informationen, siehe die
entsprechenden Anweisungen.

This commercial document is not legally
binding. For any technical information, please
refer to the corresponding instructions.

Documento comercial no controlado
Para cualquier información técnica,
ver la notificación correspondiente.

Code: 15ICA37040A0
Ed. Data Rev. Date
1 05.06.03 05.06.03