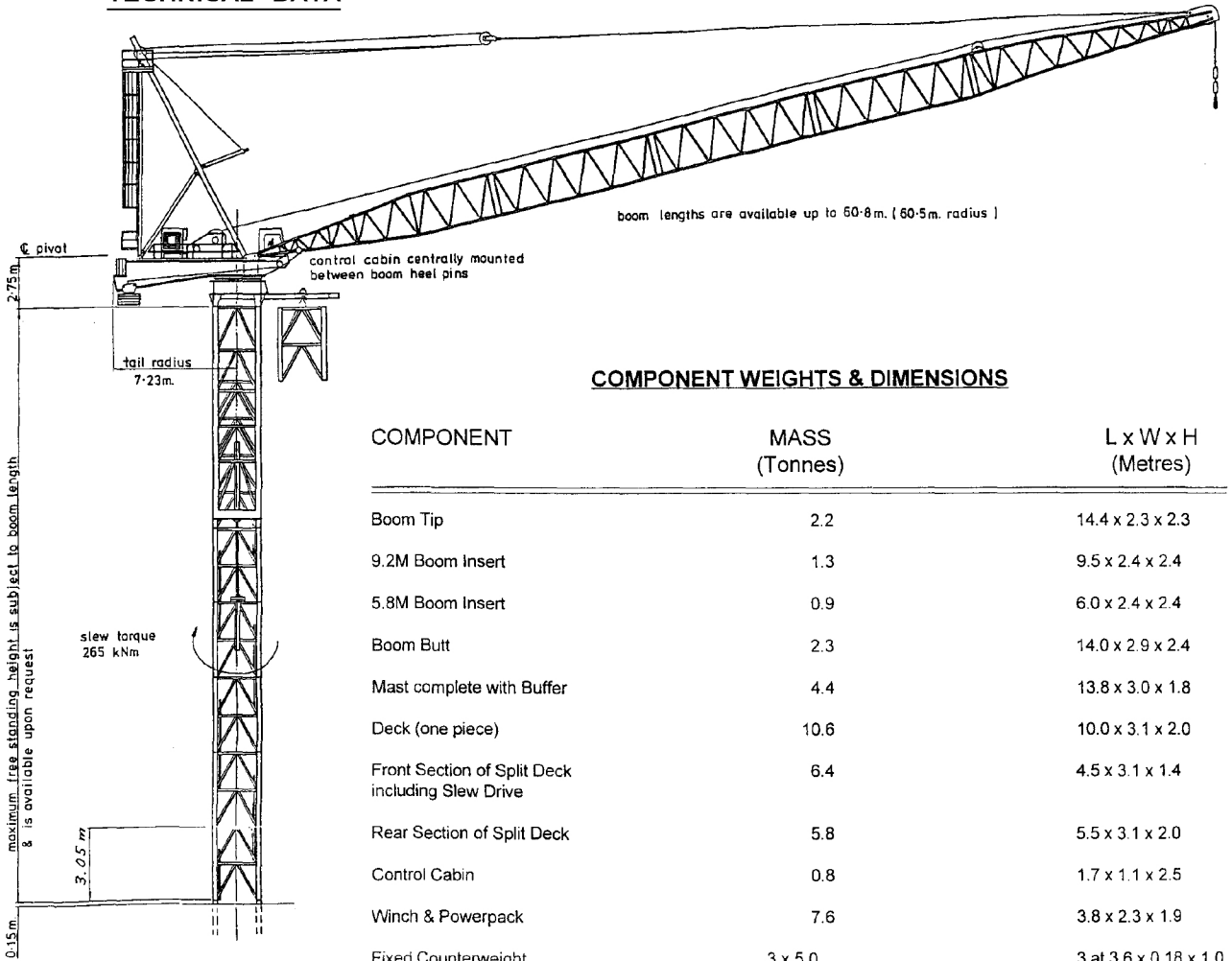


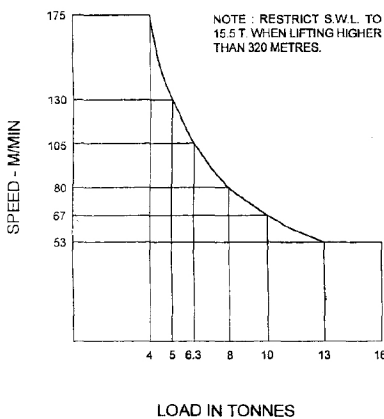
FAVELLE FAVCO M310D TECHNICAL DATA



COMPONENT WEIGHTS & DIMENSIONS

COMPONENT	MASS (Tonnes)	L x W x H (Metres)
Boom Tip	2.2	14.4 x 2.3 x 2.3
9.2M Boom Insert	1.3	9.5 x 2.4 x 2.4
5.8M Boom Insert	0.9	6.0 x 2.4 x 2.4
Boom Butt	2.3	14.0 x 2.9 x 2.4
Mast complete with Buffer	4.4	13.8 x 3.0 x 1.8
Deck (one piece)	10.6	10.0 x 3.1 x 2.0
Front Section of Split Deck including Slew Drive	6.4	4.5 x 3.1 x 1.4
Rear Section of Split Deck	5.8	5.5 x 3.1 x 2.0
Control Cabin	0.8	1.7 x 1.1 x 2.5
Winch & Powerpack	7.6	3.8 x 2.3 x 1.9
Fixed Counterweight (3 Piece)	3 x 5.0 = 15.0	3 at 3.6 x 0.18 x 1.0
Travelling Counterweight (2 Piece)	2 x 10.0 = 20.0	2 at 3.6 x 1.3 x 0.28
Slew Mount including Bearing	4.5	3.2 x 2.9 x 1.7
Standard Tower Section	2.1	2.5 x 2.5 x 3.1
Heavy Duty Tower Section	2.9	2.5 x 2.5 x 3.1
<u>External Climbing Frame:</u> Climbing Cylinder (3.3m Stroke)	2 x 1.5 = 3.0	2 at 4.0 x 0.3 x 0.3
Climbing Cylinder (3.3m Stroke)	2 x 1.8 = 3.6	2 at 4.9 x 0.3 x 0.3
2 side panels	2 x 2.3 = 4.6	2 at 9.0 x 2.6 x 0.3
2 connecting frames } 2 connecting beams }	1.6 total	2 at 3.1 x 2.4 x 0.2 2 at 3.1 x 0.3 x 0.2
2 supports	2 x 0.3 = 0.6	2 at 2.2 x 0.8 x 0.3

16 TONNE HIGH SPEED WINCH PERFORMANCE WITH 300 HP ENGINE



RADIUS (M)	5.7	10.0	15.0	20.0	25.0	30.0	35.0	40.0	45.0	50.0	55.0	60.5
LOAD (T)	16.0	14.2	12.5	11.0	9.5	8.2	7.0	6.0	5.0	4.0	3.2	2.4
ANGLE	86.0	81.9	77.1	72.2	67.2	62.0	56.4	50.5	44.1	36.8	27.8	12.3

