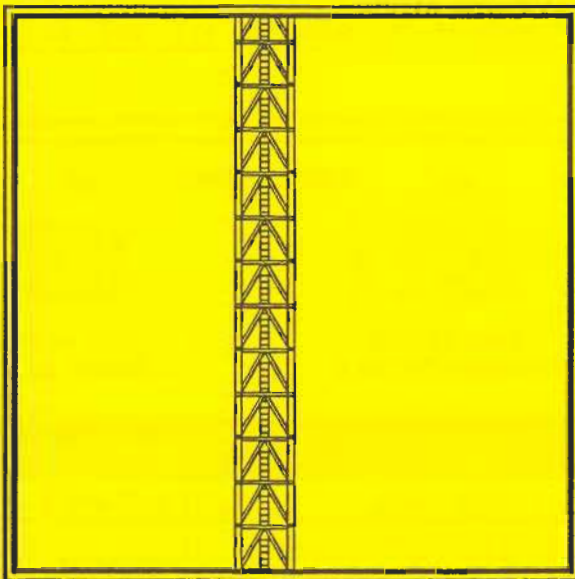


M440D CONSTRUCTION TOWER CRANE



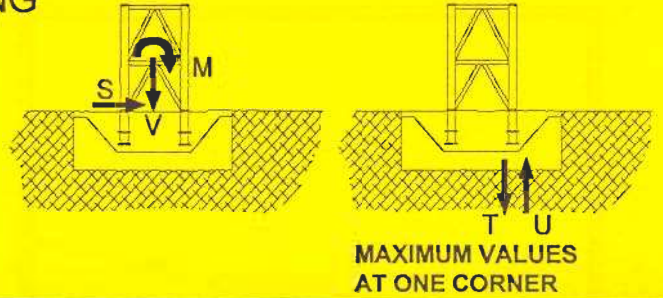
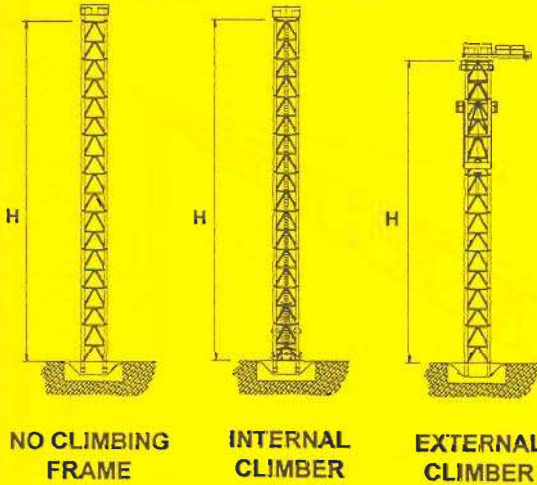
Technical Data Sheet

**FAVELLE
FAVCO**



A subsidiary of Muhibbah Engineering (M) BHD

CRANE ON BASE - FREE STANDING

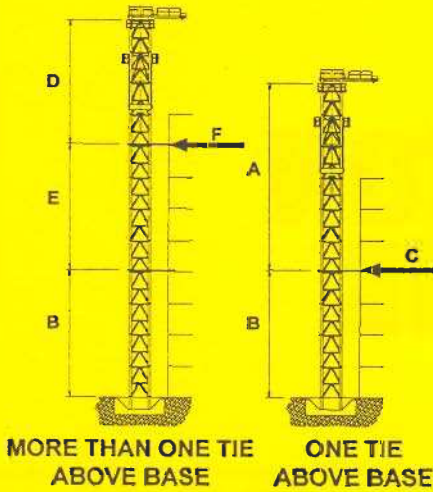


FREESTANDING TOWER HEIGHTS AND FOUNDATION REACTIONS

| TOWER | NO CLIMBING FRAME | | | INTERNAL CLIMBING FRAME | | | EXTERNAL CLIMBING FRAME | | | UNITS |
|-------|-------------------|------|-----|-------------------------|------|-----|-------------------------|------|-----|-------|
| | 441 | 442 | 392 | 441 | 442 | 392 | 441 | 442 | 392 | |
| H | 40 | 48 | 40 | 40 | 48 | 40 | 36 | 44 | 36 | (m) |
| M | 885 | 1122 | 877 | 885 | 1122 | 877 | 930 | 1191 | 923 | (mT) |
| V | 178 | 188 | 178 | 191 | 203 | 193 | 187 | 199 | 189 | (T) |
| S | 26 | 29 | 25 | 26 | 29 | 25 | 29 | 33 | 29 | (T) |
| T | 301 | 369 | 341 | 305 | 373 | 345 | 312 | 392 | 351 | (T) |
| U | 225 | 292 | 261 | 222 | 288 | 257 | 236 | 310 | 273 | (T) |

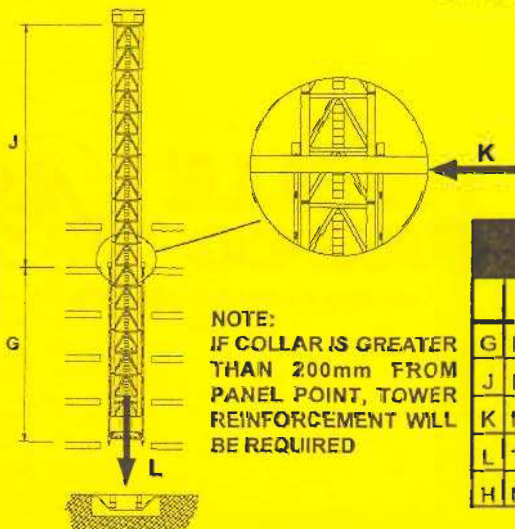
In-service wind speeds up to 20 m/s & out-of-service wind speeds up to 42 m/s. Alternatives available upon request. For long (>55m) booms, heights shown are only attainable with extra counterweight.

EXTERNAL CLIMBING



| EXTERNAL CLIMBING | | | | |
|-------------------------------|-----|-----|-----|-------|
| TOWER TYPES: | 441 | 442 | 392 | UNITS |
| ONE TIE ABOVE BASE | | | | |
| A MAX. HEIGHT ABOVE FIRST TIE | 32 | 40 | 32 | (m) |
| B MIN HEIGHT TO FIRST TIE | 16 | 20 | 20 | (m) |
| C MAX. HORIZONTAL TIE LOAD | 104 | 111 | 88 | (T) |
| MORE THAN ONE TIE BASE | | | | |
| D MAX. HEIGHT ABOVE TOP TIE | 32 | 40 | 32 | (m) |
| E MIN HEIGHT BETWEEN TOP TIES | 16 | 20 | 16 | (m) |
| F MAX. HORIZONTAL TIE LOAD | 93 | 99 | 92 | (T) |

INTERNAL LADDER CLIMBING



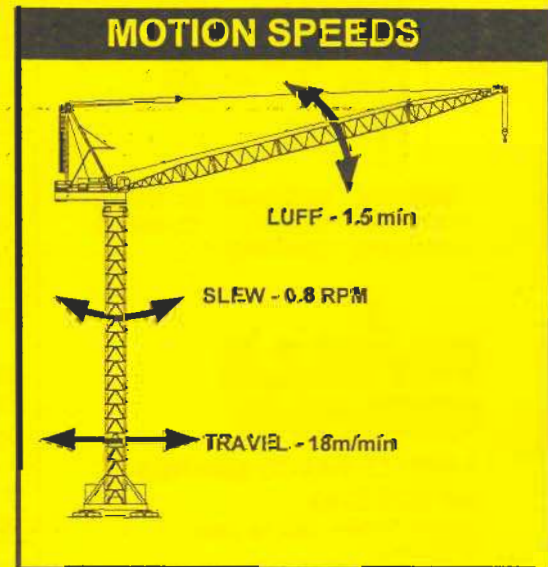
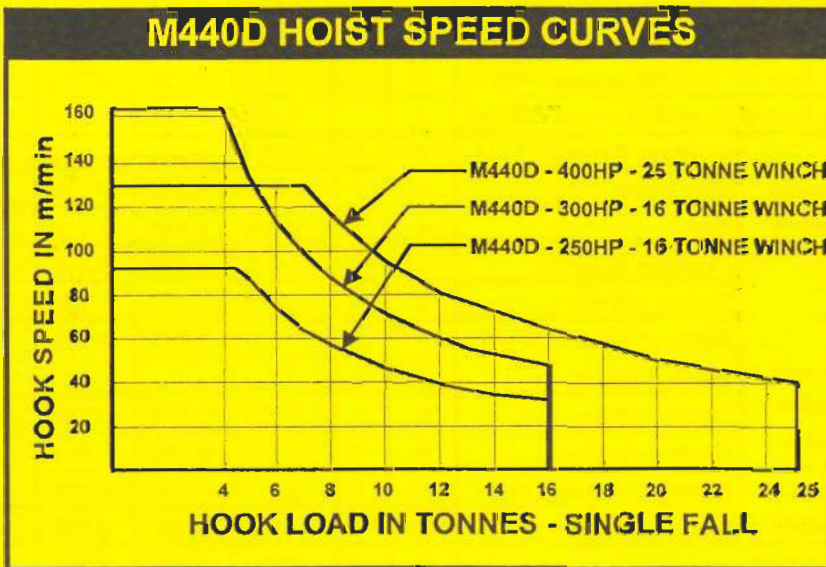
| INTERNAL LADDER CLIMBING | | | | | |
|---------------------------------|-------|-----|-----|-----|-------|
| TOWER TYPES | 391 | 392 | 441 | 442 | UNITS |
| G MIN. DISTANCE BETWEEN COLLARS | 10.5 | 12 | 12 | 12 | (m) |
| J MAX. DISTANCE ABOVE TOP TIE | 33.5 | 28 | 28 | 36 | (m) |
| K MAXIMUM HORIZONTAL LOAD | 98.0 | 71 | 71 | 90 | (T) |
| L TOTAL VERTICAL LOAD | 156.0 | 193 | 191 | 203 | (T) |
| H MAX. FREESTANDING HEIGHT | 44.0 | 40 | 40 | 48 | (m) |

Radius & Capacity

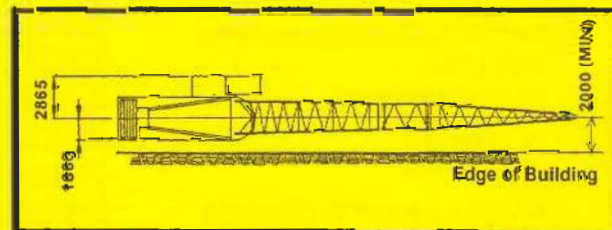
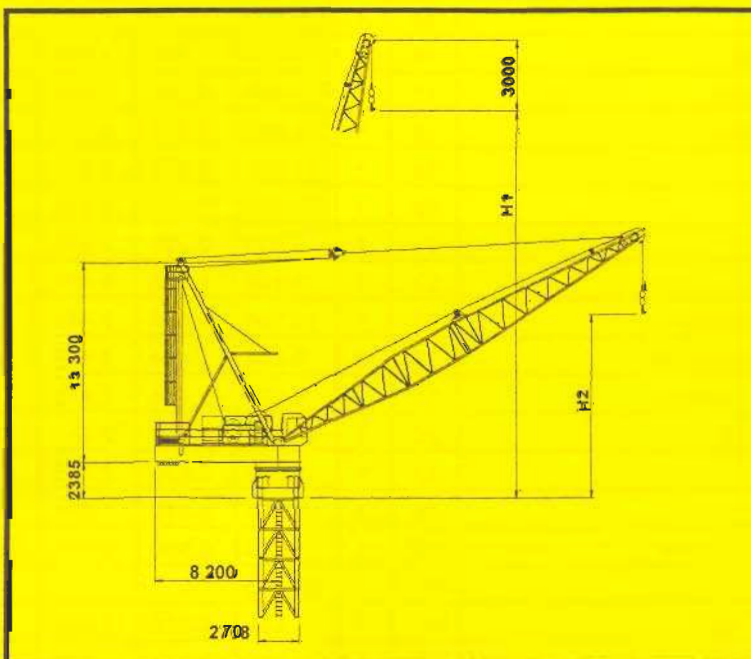
| BOOM LENGTH (m) | MINIMUM RADIUS (m) | MAX RADIUS FOR 50T | RADIUS (METRES) & CAPACITY (TONNES) (25 TONNE & 16 TONNE WINCHES & 2-FALL HOOK) | | | | | | | | | | | | | | | | | | |
|--------------------|-----------------------|-----------------------|--|-------------|-------------|-------------|-------------|-------------|-------------|-------------|-------------|-------------|-------------|-------------|-------------|-------------|-------------|-------------|-------------|-------------|-------------|
| | | | 10.0 (m) | 15.0 (m) | 20.0 (m) | 25.0 (m) | 30.0 (m) | 32.5 (m) | 35.0 (m) | 37.5 (m) | 40.0 (m) | 42.5 (m) | 45.0 (m) | 47.5 (m) | 50.0 (m) | 52.5 (m) | 55.0 (m) | 57.6 (m) | 60.0 (m) | 62.5 (m) | 65.0 (m) |
| 68.8 | 6.0 | - | 25.0 | 22.5 | 19.5 | 17.2 | 15.0 | 13.7 | 12.6 | 11.3 | 10.2 | 9.2 | 8.3 | 7.6 | 6.9 | 6.1 | 5.5 | 4.9 | 4.3 | 3.6 | 2.7 |
| 64.2 | 5.3 | - | 30.6 | 26.3 | 23.0 | 20.0 | 16.9 | 15.2 | 13.6 | 12.4 | 11.2 | 10.2 | 9.3 | 8.4 | 7.6 | 6.9 | 6.3 | 5.7 | 4.8 | | |
| 59.6 | 5.0 | - | 32.0 | 29.8 | 25.8 | 21.7 | 17.5 | 15.8 | 14.2 | 12.9 | 11.8 | 10.7 | 9.7 | 8.8 | 8.0 | 7.3 | 6.6 | | | | |
| 55.0 | 4.4 | - | 44.0 | 41.0 | 29.8 | 22.8 | 18.1 | 16.3 | 14.6 | 13.2 | 12.0 | 11.0 | 10.0 | 9.3 | 8.5 | 8.0 | | | | | |
| 50.4 | 4.2 | 12.0 | 50.0 | 42.0 | 30.2 | 23.0 | 18.3 | 16.6 | 14.9 | 13.6 | 12.4 | 11.4 | 10.4 | 9.5 | | | | | | | |
| 45.8 | 3.9 | 13.0 | 50.0 | 42.3 | 30.6 | 23.5 | 18.7 | 17.0 | 15.4 | 14.1 | 12.8 | 11.7 | | | | | | | | | |
| 41.2 | 3.7 | 13.2 | 50.0 | 42.8 | 30.7 | 23.8 | 19.0 | 17.3 | 15.6 | 14.2 | 13.1 | | | | | | | | | | |
| 36.6 | 3.3 | 13.3 | 50.0 | 43.3 | 30.8 | 24.0 | 19.4 | 17.7 | 16.1 | | | | | | | | | | | | |
| 32.0 | 3.0 | 13.3 | 50.0 | 43.5 | 31.3 | 24.2 | 19.5 | | | | | | | | | | | | | | |

Speeds

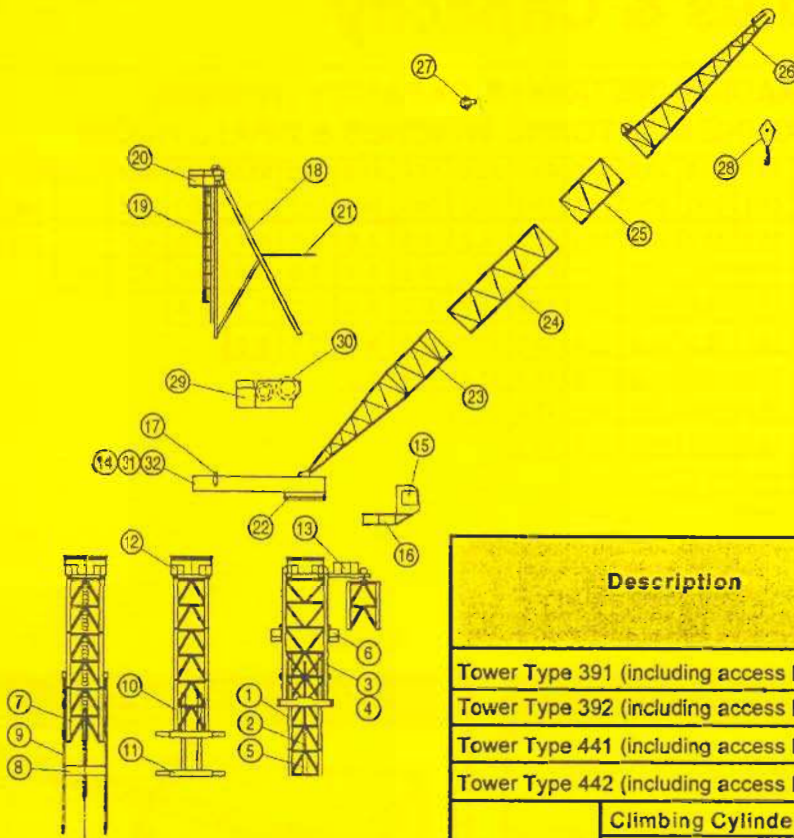
(Alternative Speed Configurations Available on Request)



Dimensions



| MAXIMUM RADIUS (m) | BOOM LENGTH (m) | HOOK HEIGHT | |
|-----------------------|--------------------|-------------|--------|
| | | H1 (m) | H2 (m) |
| 65.0 | 68.8 | 68.6 | 18.6 |
| 60.0 | 64.2 | 64.0 | 17.5 |
| 55.0 | 59.6 | 59.4 | 16.3 |
| 52.5 | 55.0 | 54.8 | 15.2 |
| 47.5 | 50.4 | 50.2 | 14.1 |
| 42.5 | 45.8 | 45.6 | 12.1 |
| 40.0 | 41.2 | 41.0 | 11.5 |
| 35.0 | 36.6 | 36.4 | 9.5 |
| 30.0 | 32.0 | 31.8 | 8.7 |



INTERNAL CLIMBING (LADDER) INTERNAL CLIMBING (3-BEAM) EXTERNAL CLIMBING



FAVELLE FAVCO CRANES (M) SDN BHD

Lot 9895, 4th Mile, Jaian Kg. Jawa
41000 Klang,
Selangor Darul Ehsan
Malaysia
Tel: 603 333 7835, 603 333 7836
Fax: 603 333 7842

FAVELLE FAVCO CRANES PTE LTD

No. 6 Sungei Kadut Loop
Singapore 729 453
Tel: 65 366 3508
Fax: 65 366 3503

FAVELLE FAVCO CRANES PTY LTD

28 Yarunga Street Prestons
NSW 2170 Australia
P.O. Box 456 Liverpool BC
NSW 1871 Australia
Telephone: 61 2 9607 0055, 61 2 9609 2009
Fax: 61 2 9607 0022, 61 2 9607 2728
E - MAIL : favcosyd@enternet.com.au

Distributed By:

| Description | | Pos | Qty | L Length (m) | W Width (m) | H Height (m) | Weight per item (kg) |
|---|---------------------------------------|-----|-----|--------------|-------------|--------------|----------------------|
| Tower Type 391 (including access ladders) | | 1 | - | 4.000 | 2.404 | 2.397 | 4000 |
| Tower Type 392 (including access ladders) | | 1 | - | 4.000 | 2.411 | 2.399 | 4900 |
| Tower Type 441 (including access ladders) | | 1 | - | 4.000 | 2.700 | 2.700 | 4100 |
| Tower Type 442 (including access ladders) | | 1 | - | 4.000 | 2.721 | 2.709 | 4400 |
| External Climber | Climbing Cylinder | 2 | 2 | 5.030 | 0.292 | 0.292 | 1500 |
| | Side Panel | 3 | 2 | 11.520 | 0.370 | 2.740 | 4973 |
| | Tie | 4 | 2 | 7.020 | 0.168 | 3.410 | 907 |
| | Climbing Support | 5 | 2 | 2.650 | 0.335 | 0.800 | 332 |
| | Access Platform | 6 | 1 | 3.550 | 1.073 | 1.235 | 199 |
| Internal Ladder Climber | Bottom Climbing Tower (inc Cylinders) | 7 | 1 | 4.000 | 2.709 | 2.721 | 9136 |
| | Climbing Foot | 8 | 1 | 2.728 | 0.610 | 0.880 | 1435 |
| | Climbing Ladder | 9 | ? | 0.210 | 0.170 | 7.985 | 525 |
| 3 - Beam Climber | Bottom Climbing Tower | 10 | 1 | 2.090 | 2.700 | 4.575 | 8509 |
| | Climbing Beams | 11 | 1 | 0.450 | 2.700 | 0.802 | 1630 |
| Slew Mount | | 12 | 1 | 3.200 | 2.709 | 1.814 | 5050 |
| Monorail Beam & Trolley | | 13 | 1 | 7.430 | 1.680 | 1.400 | 1695 |
| Machinery Deck | | 14 | 1 | 9.825 | 3.320 | 1.492 | 12500 |
| Cabin | | 15 | 1 | 1.700 | 1.100 | 2.100 | 1200 |
| Cabin Support | | 16 | 1 | 4.000 | 1.335 | 1.325 | 330 |
| Counter-weights | | 17 | 5 | 2.390 | 0.200 | 2.000 | 7600 |
| Mast & Sheaves | | 18 | 1 | 14.000 | 0.800 | 3.220 | 5765 |
| Mast Ladder | | 19 | 1 | 11.220 | 0.975 | 0.800 | 305 |
| Mast Platform | | 20 | 1 | 2.475 | 1.450 | 0.940 | 298 |
| Boom Buffer | | 21 | 1 | 3.515 | 0.228 | 2.810 | 271 |
| Slew Ring | | 22 | 1 | 3.100 | 3.100 | 0.175 | 1950 |
| Bottom Jib Section | | 23 | 1 | 13.700 | 3.040 | 2.414 | 2018 |
| Jib Extension Section | | 24 | 1 | 9.200 | 2.414 | 2.414 | 1358 |
| Jib Extension Section | | 25 | 1 | 4.600 | 2.414 | 2.414 | 804 |
| Top Jib Section | | 26 | 1 | 13.533 | 2.414 | 2.414 | 2681 |
| Bridle | | 27 | 1 | 1.055 | 0.630 | 0.890 | 213 |
| 2 - Fall Hook | | 28 | 1 | 0.890 | 0.332 | 1.940 | 1141 |
| Powerpack Winches | | 29 | 1 | 4.250 | 2.600 | 2.250 | 13459 |
| Hoist Rope | | 30 | 1 | 565.000 | - | - | 4343 |
| Split Deck - Front | | 31 | 1 | 3.550 | 3.320 | 1.492 | 7763 |
| Split Deck - Back | | 32 | 1 | 6.585 | 3.280 | 1.100 | 8631 |

*Subject to change without notice