

SE SERIES

SE SERIES

Courtesy of CraneMarket.com



FASSI

LEADER IN INNOVATION

F600SE.44

More work, less weight

The F600SE.44 is the tallest and most functional wallboard crane on the market. This is the result of over 35 years of experience with specialized users in this competitive sector.

A crane designed for intensive use over time, to ensure performance in extreme working conditions.

Crane available with exclusive **Fassi Internet of Cranes®** "IoC" system, which allows operators to count on a permanently active support via the web.

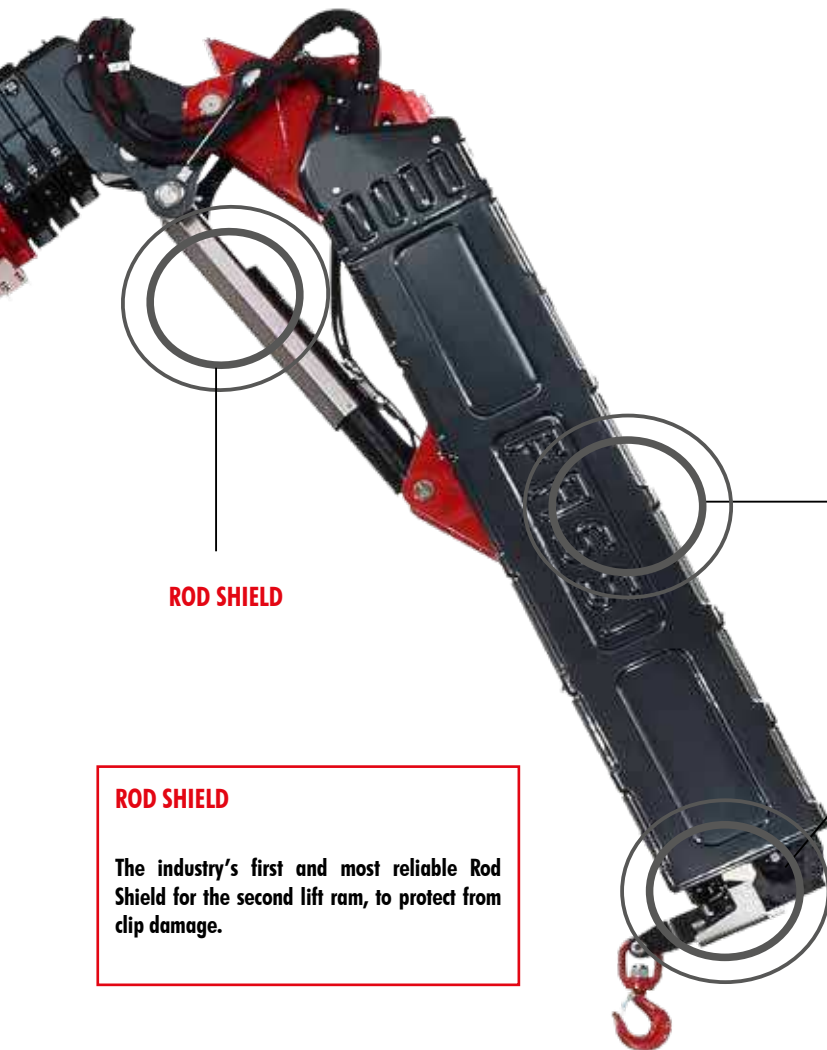
CARBON LOOK PROTECTIVE CASING

UHSS - FASSI ULTRA HIGH STRENGTH STEEL

Fassi uses ultra-high strength steel, that has extremely flexible welding properties. Advanced ultra-high strength steel is used for the construction of all components of this crane mode, it has an exceptionally high elastic content which increases its structural strength and resistance and, at the same time, reduces the weight of the crane and increases the load capacity of the vehicle.

ROTATION DESIGNED FOR INTENSIVE USE





DECAGONAL SECTION AND ENCASED PROTECTION

Both booms have a ten-sided cross-section to ensure maximum rigidity. Extension cylinder and pipes are protectively encased inside the booms.

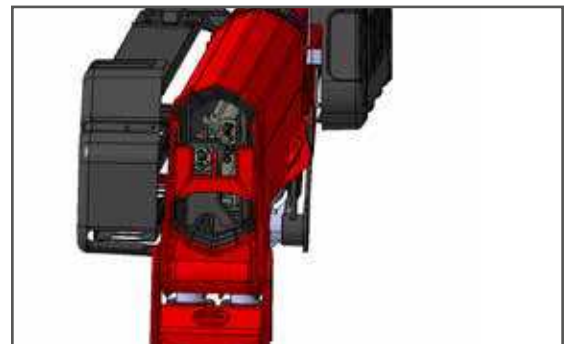
CARBON LOOK PROTECTIVE CASING

ROD SHIELD

ROD SHIELD

The industry's first and most reliable Rod Shield for the second lift ram, to protect from clip damage.

MPES - MULTI POWER EXTENSION SYSTEM



MPES

MULTI POWER EXTENSION SYSTEM

A Fassi system that guarantees an exceptional extension/retraction speed of the telescopic booms, built up by a set of equally powerful independent cylinders, linked in series and activated by a single control. Special independent fixing system of the extension cylinders guarantee high vertical lifting performance.



FX901 - TOUCH SCREEN DISPLAY

F600SE.44 - standard configuration



F600SE.44

FEATURES



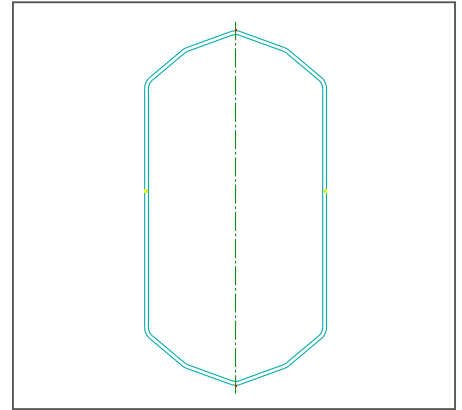
FX901 - Touch Screen Display

7" graphic color display with touchscreen technology. It displays detailed information concerning stabilization and crane working conditions.



V7RRC - Radio Remote Control

The new V7 RRC has a large graphic display for the remote control of the crane's functions and, on request, also has options regarding the vehicle and the stabilizers. Advanced control and command interface which makes the use of our cranes ever more precise and efficient.



DECAGONAL SECTION

Both booms have a ten-sided section to ensure maximum rigidity.



CONTINUOUS ROTATION with double roller and ball guide turntable and motoreducer, designed for intensive use.



CARBON LOOK CASING New protective "carbon look" casing is dent resistant, and by far more captivating from an aesthetic point of view.

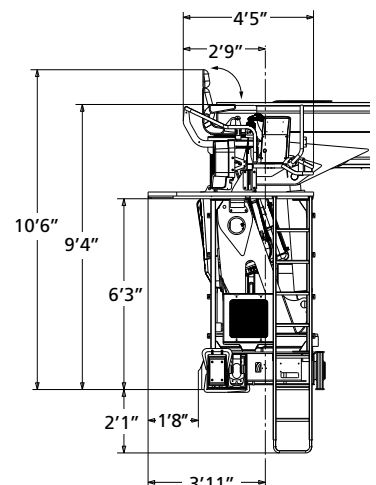
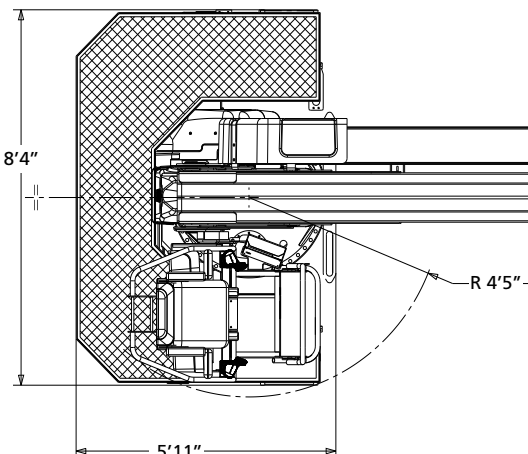


LINKAGE on crane articulation, maintaining a constant lifting moment and better crane performances in terms of both dynamic lifting and static capacity.

Options



TOP SEAT WITH PLATFORM



Fassi Internet of Cranes®

Cranes go online thanks to Fassi's Internet of Cranes® IoC, which allows operators to be able to count on an active support service* via the web.

Fassi's patented "Internet of Cranes® – IoC" system manages all of the information available from the operation of the crane to provide the operator (or the support center) the advantages of a machine with active intelligent logic while it is in operation. The information that the system makes remotely available includes:

- ***Telemetry and diagnostics***
- ***Geolocation***
- ***The crane's usage status***
- ***Life and analysis of the machine: black box***
- ***Statistics regarding the usage conditions of the crane***
- ***Monitoring of residual life and predictive maintenance***
- ***Parameters and software updates***

ADVANTAGES

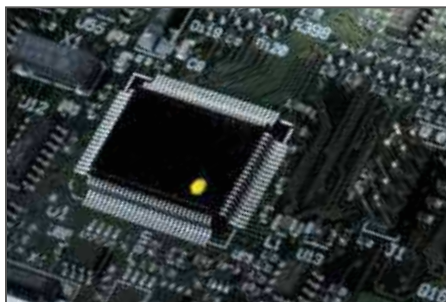
Fassi's Internet of Cranes® - IoC offers a complete operational change in support – from an era of compilation of reports and log books by service technicians, to real-time reporting, verification, and management of a crane's function.

***on subscription of annual fee**



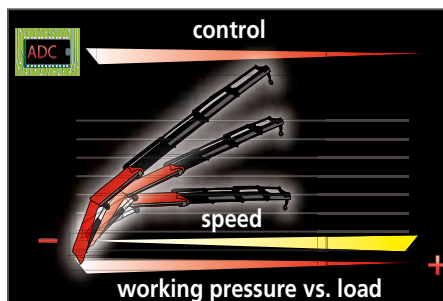
SE SERIE - F600SE.44

STANDARD CONFIGURATION



IMC - Integral Machine Control

The digital brain of the Fassi cranes which, through sophisticated electronics and crane control systems, manages the best operating conditions to ensure optimal machine performance and control.



ADC - Automatic Dynamic Control

A control system developed by Fassi automatically controlling the dynamics of all the crane functions maximizing the speed of movement depending on the handled load, allowing only controlled movements and minimizing the structural stress on both the crane and the frame/sub frame of the vehicle.



D900 - Digital Multifunction Distributor Bank

Fassi's high-performance, multifunctional compensated hydraulic distributor bank with a digital anti-saturation system ensures a superlative multifunction and proportional operation. Coupled with the Fassi XF (Extra Fast) system, the D900 guarantees an extraordinary fluidity and speed.



FX900 - Fassi Electronic Control

The FX900 electronically controls the load conditions of the crane and the hydraulic and manual winch extensions, specific to the particular crane model on which it is installed. The FX900 is also able to activate different work sectors, in relation to the stability of the crane and vehicle, as it is in use.



OTC - Oil Temperature Control

Fitted inside the oil cooler, this electronically controlled, analogic temperature sensor is capable of maintaining an optimal hydraulic system temperature even in the most stressful working conditions. Temperature readings are displayed on the user control panel and the radio remote control display.



FS - Flow Sharing

Fassi's flow sharing enables the operation of multiple functions at the same time by distributing the available oil flow proportionally to the desired functions and at the desired speed.



XF - Extra Fast

A Fassi system that, through dedicated pilot operated check valves in conjunction with the multifunction distributor, allows smooth, precise and sensitive movements with less oil heating and higher speeds of operation.



MPES - Multi Power Extension System

A Fassi system that guarantees an exceptional extension/retraction speed of the telescopic booms, built up by a set of equally powerful independent rams, linked in series connection and activated by a single control. Special independent fixing system of the extension rams to guarantees high vertical lifting performances.



UHSS - Ultra High Strength Steel

Ultra high strength steel has a high elastic limit that increases structural strength and resistance of the crane components while reducing the weight of the crane and increasing a vehicle's potential payload.

F425SE

Thanks to the decagonal section of the booms, this crane model has a reduced weight and an improved capacity at the maximum outreach, enabling the operators to vertically extend the booms up to 72'.



TOP SEAT WITH PLATFORM*

ROD SHIELD

The industry's first and most reliable Rod Shield for the second lift ram, to protect from clip damage.

FEATURES



ELECTRONIC DOUBLE JOYSTICK*

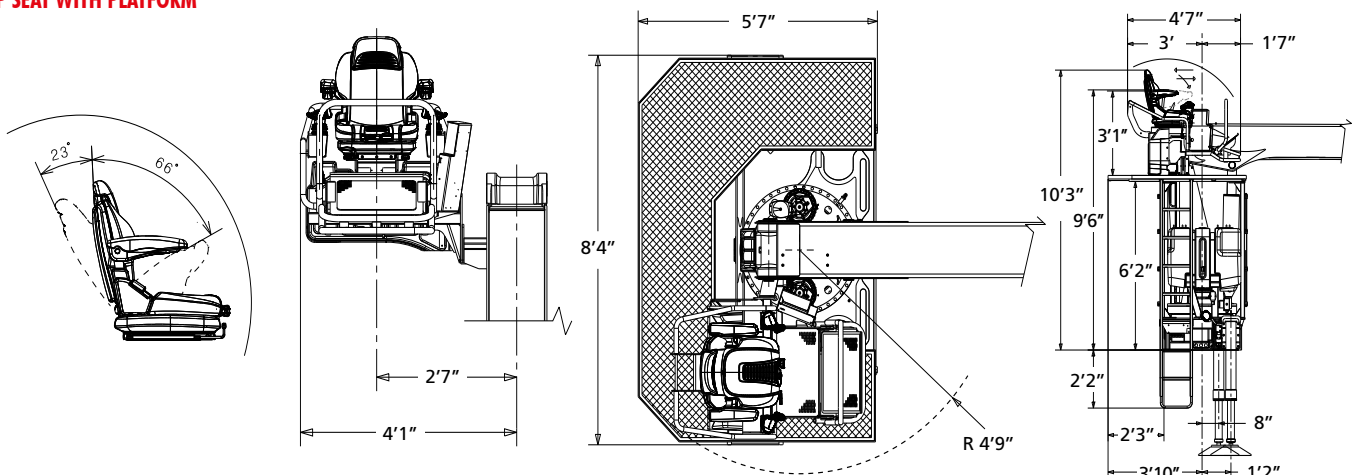
The Electronic Double Joystick connected via CAN-bus to the FX500 electronic system allows control of 3 functions: 2 by moving the joystick and the third via the proportional "roller" cursor. It automatically adjusts in accordance with the crane's dynamic control.



DECAGONAL SECTION

Both booms have a ten-sided section to ensure maximum rigidity.

TOP SEAT WITH PLATFORM



* option

Crane belonging to the HC1 HD5 S2 class (if installed on truck) according to EN 12999:2011

SE SERIE - F425SE

FEATURES



FX500 - Fassi Electronic Control

The FX500 electronically controls the load conditions of the crane and the hydraulic and manual winch extensions, specific to the particular crane model on which it is installed. The FX500 is also able to activate different work sectors, in relation to the stability of the crane and vehicle, as it is in use.



RCH/RCS - Radio Remote Control *

The new-generation digital radio remote control, exclusively compatible with the Fassi product, with wide graphic display to remotely control the functions of the crane and, optionally, the vehicle and the outriggers. It automatically researches the available frequency and allows for continuous interaction between operator and crane.



TOP SEAT - Work in comfort*

The F375SE top seat gives operators an ergonomic seat in a position of safety and complete control. The seat includes a longitudinal adjustment, a reclining and height-adjustable backrest, and an adjustable weight damper to provide the most comfortable working position for operators. The top seat is also equipped with a new, reclinable distributor control lever for improved accessibility (with interlocking seat) and new, high-precision pedals. Important reference documents can also be stored on the seat back.

STANDARD CONFIGURATION



D900 - Digital Multifunction Distributor Bank

Fassi's high-performance, multifunctional compensated hydraulic distributor bank with a digital anti-saturation system ensures a superlative multifunction and proportional operation. Coupled with the Fassi XF (Extra Fast) system, the D900 guarantees an extraordinary fluidity and speed.



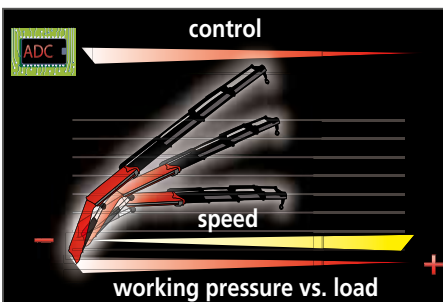
OTC - Oil Temperature Control

Fitted inside the oil cooler, this electronically controlled, analogic temperature sensor is capable of maintaining an optimal hydraulic system temperature even in the most stressful working conditions. Temperature readings are displayed on the user control panel and the radio remote control display.



FS - Flow Sharing

Fassi's flow sharing enables the operation of multiple functions at the same time by distributing the available oil flow proportionally to the desired functions and at the desired speed.



ADC - Automatic Dynamic Control

A control system developed by Fassi automatically controlling the dynamics of all the crane functions maximizing the speed of movement depending on the handled load, allowing only controlled movements and minimizing the structural stress on both the crane and the frame/sub frame of the vehicle.



MPES - Multi Power Extension System

A Fassi system that guarantees an exceptional extension/retraction speed of the telescopic booms, built up by a set of equally powerful independent rams, linked in series connection and activated by a single control. Special independent fixing system of the extension rams to guarantee high vertical lifting performances.



UHSS - Ultra High Strength Steel

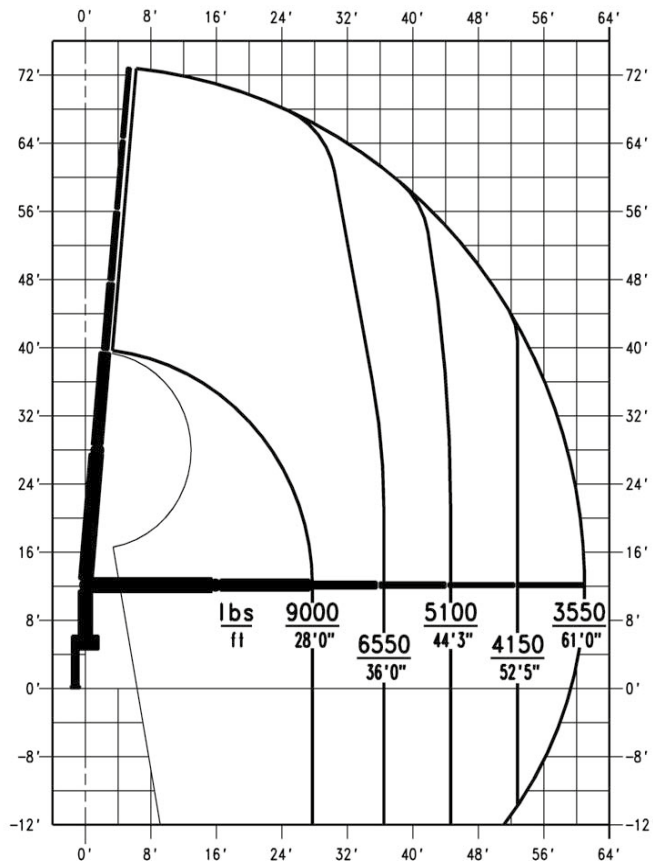
Ultra high strength steel has a high elastic limit that increases structural strength and resistance of the crane components while reducing the weight of the crane and increasing a vehicle's potential payload.

* option

Crane belonging to the HC1 HD5 S2 class (if installed on truck) according to EN 12999:2011

PLACING CAPACITY CHART WITH LIFTING MOMENT LIMITING DEVICE

CRANE TYPE
F425SE.04



DO NOT STAY UNDER SUSPENDED LOADS

THE WEIGHT OF WALLBOARD FORK AND ROTATOR MUST BE DEDUCTED FROM LIFTING CHART.

DE17745

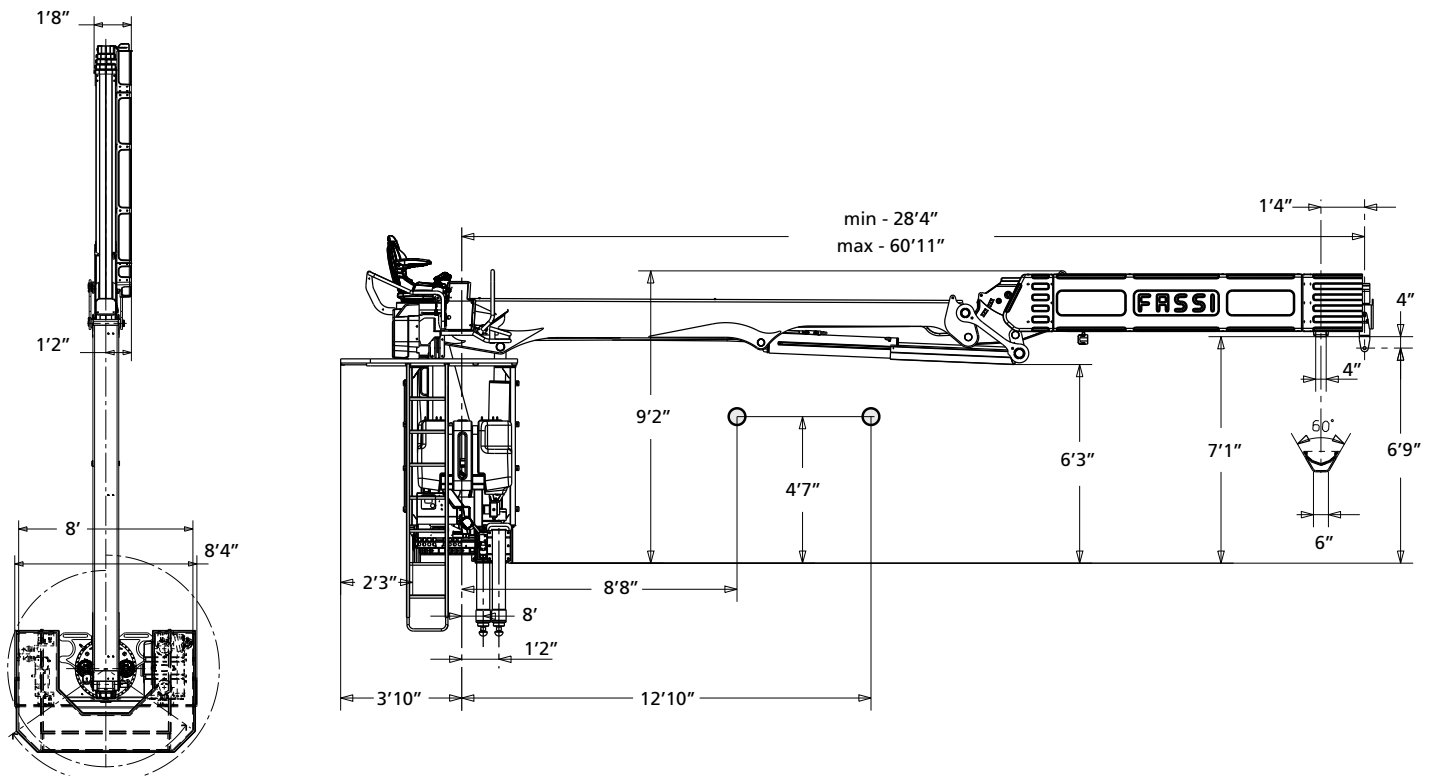
TECHNICAL DATA

F425SE.04

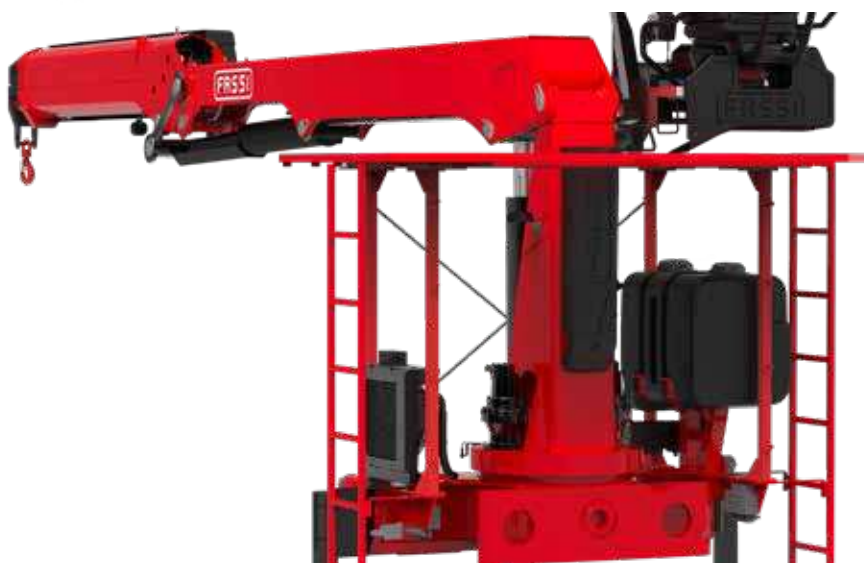
Lifting capacity	252172 lbs.ft
Standard reach	61'0" ft
Hydraulic extension	32'8" ft
Rotation arc	470°
Rotation torque	36878 lbs.ft
Working pressure	5076 psi
Pump capacity	21-21 gal/min
Oil tank capacity	66 gal
Outriggers spread crane	25'7" ft
Supplementary outriggers	-
Degree of boom elevator	84°
Weight	10692 lbs

**CERTIFIED
DYNAMIC
PERFORMANCE**

Dynamic load diagrams calculated, tested and certified to lift the loads at the declared reaches unless indicated

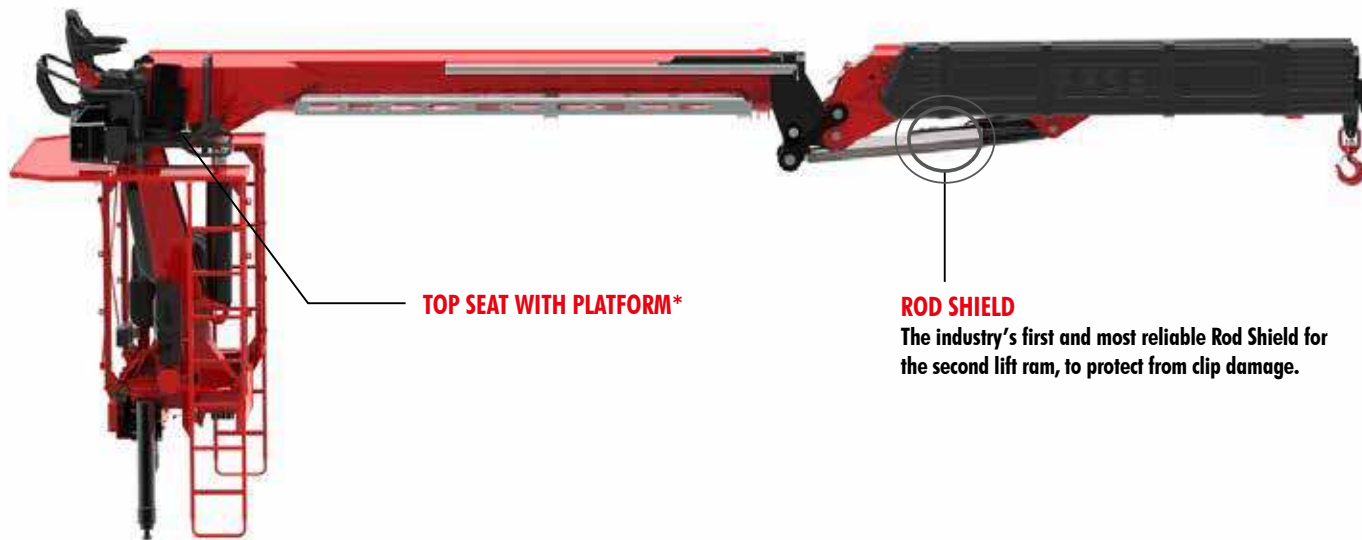


F425SE



F375SE

One of the biggest advantages of the F375SE is that it features an extension on the main boom and 4 extensions on the outer boom, allowing operators to extend the boom vertically to 38' with a load before knuckling over and extending it to its full reach.



TOP SEAT WITH PLATFORM*

ROD SHIELD

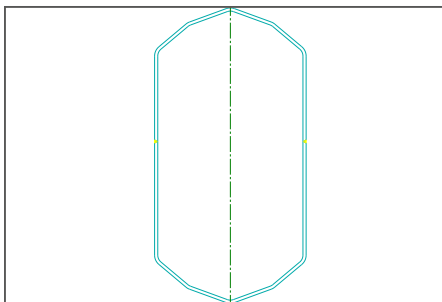
The industry's first and most reliable Rod Shield for the second lift ram, to protect from clip damage.

FEATURES



ELECTRONIC DOUBLE JOYSTICK*

The Electronic Double Joystick connected via CAN-bus to the FX500 electronic system allows control of 3 functions: 2 by moving the joystick and the third via the proportional "roller" cursor. It automatically adjusts in accordance with the crane's dynamic control.



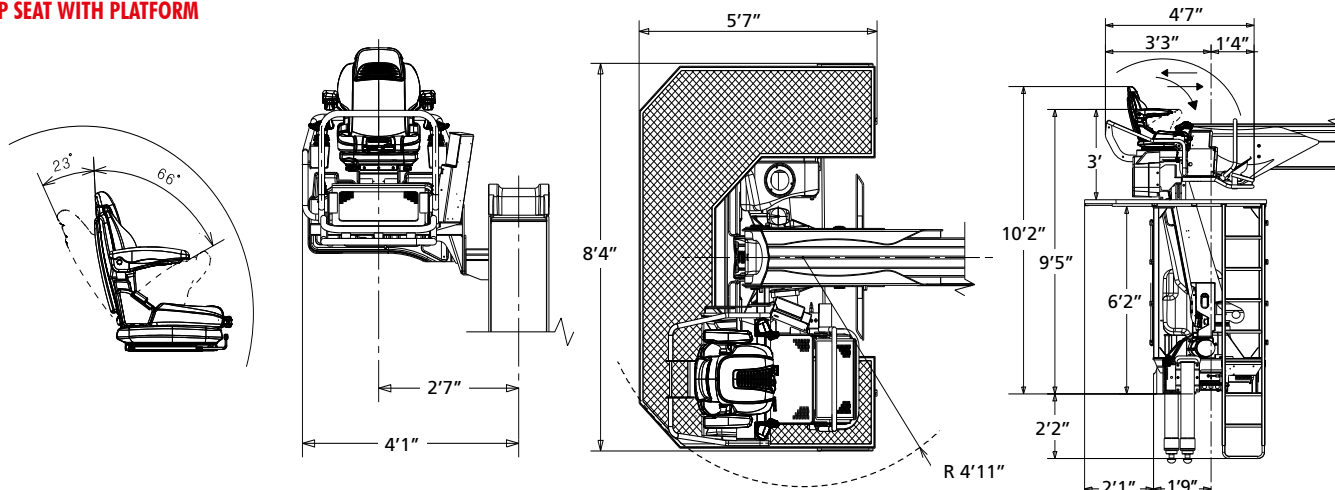
DECAGONAL SECTION

Both booms have a ten-sided section to ensure maximum rigidity.



LINKAGE on crane articulation, maintaining a constant lifting moment and better crane performances in terms of both dynamic lifting and static capacity.

TOP SEAT WITH PLATFORM



* option

Crane belonging to the HC1 HD5 S2 class (if installed on truck) according to EN 12999:2011

SE SERIE - F375SE

FEATURES



FX500 - Fassi Electronic Control

The FX500 electronically controls the load conditions of the crane and the hydraulic and manual winch extensions, specific to the particular crane model on which it is installed. The FX500 is also able to activate different work sectors, in relation to the stability of the crane and vehicle, as it is in use.



RCH/RCS - Radio Remote Control *

The new-generation digital radio remote control, exclusively compatible with the Fassi product, with wide graphic display to remotely control the functions of the crane and, optionally, the vehicle and the outriggers. It automatically researches the available frequency and allows for continuous interaction between operator and crane.



TOP SEAT - Work in comfort*

The F375SE top seat gives operators an ergonomic seat in a position of safety and complete control. The seat includes a longitudinal adjustment, a reclining and height-adjustable backrest, and an adjustable weight damper to provide the most comfortable working position for operators. The top seat is also equipped with a new, reclinable distributor control lever for improved accessibility (with interlocking seat) and new, high-precision pedals. Important reference documents can also be stored on the seat back.

STANDARD CONFIGURATION



D900 - Digital Multifunction Distributor Bank

Fassi's high-performance, multifunctional compensated hydraulic distributor bank with a digital anti-saturation system ensures a superlative multifunction and proportional operation. Coupled with the Fassi XF (Extra Fast) system, the D900 guarantees an extraordinary fluidity and speed.



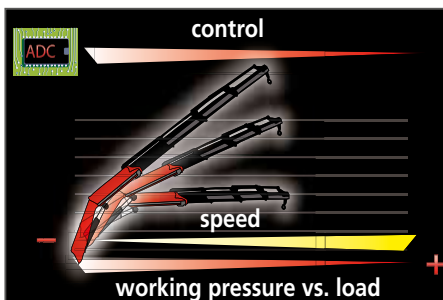
OTC - Oil Temperature Control

Fitted inside the oil cooler, this electronically controlled, analogic temperature sensor is capable of maintaining an optimal hydraulic system temperature even in the most stressful working conditions. Temperature readings are displayed on the user control panel and the radio remote control display.



FS - Flow Sharing

Fassi's flow sharing enables the operation of multiple functions at the same time by distributing the available oil flow proportionally to the desired functions and at the desired speed.



ADC - Automatic Dynamic Control

A control system developed by Fassi automatically controlling the dynamics of all the crane functions maximizing the speed of movement depending on the handled load, allowing only controlled movements and minimizing the structural stress on both the crane and the frame/sub frame of the vehicle.



MPES - Multi Power Extension System

A Fassi system that guarantees an exceptional extension/retraction speed of the telescopic booms, built up by a set of equally powerful independent rams, linked in series connection and activated by a single control. Special independent fixing system of the extension rams to guarantee high vertical lifting performances.



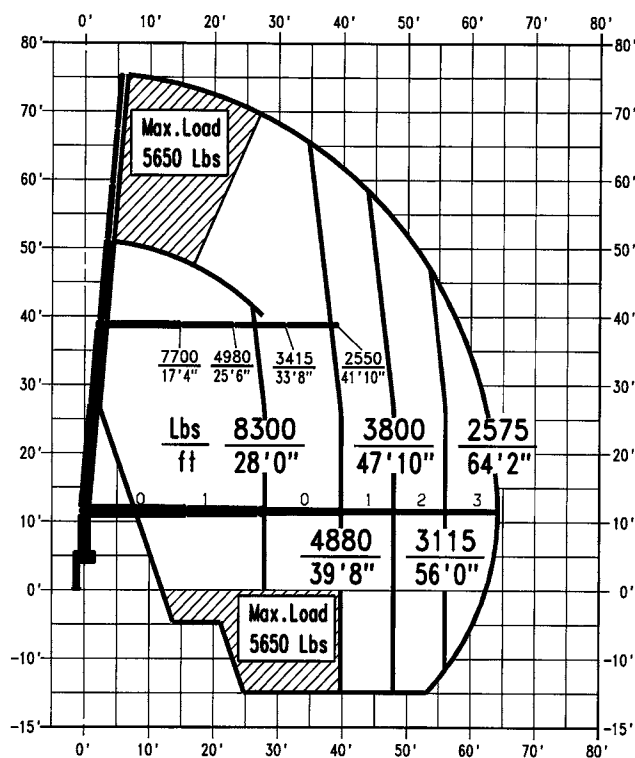
UHSS - Ultra High Strength Steel

Ultra high strength steel has a high elastic limit that increases structural strength and resistance of the crane components while reducing the weight of the crane and increasing a vehicle's potential payload.

* option
Crane belonging to the HC1 HD5 S2 class (if installed on truck) according to EN 12999:2011

PLACING CAPACITY CHART WITH LIFTING MOMENT LIMITING DEVICE

CRANE TYPE
F375SE.13



DO NOT STAY UNDER SUSPENDED LOADS

THE WEIGHT OF WALLBOARD FORK AND ROTATOR MUST BE DEDUCTED FROM LIFTING CHART.

DE17582

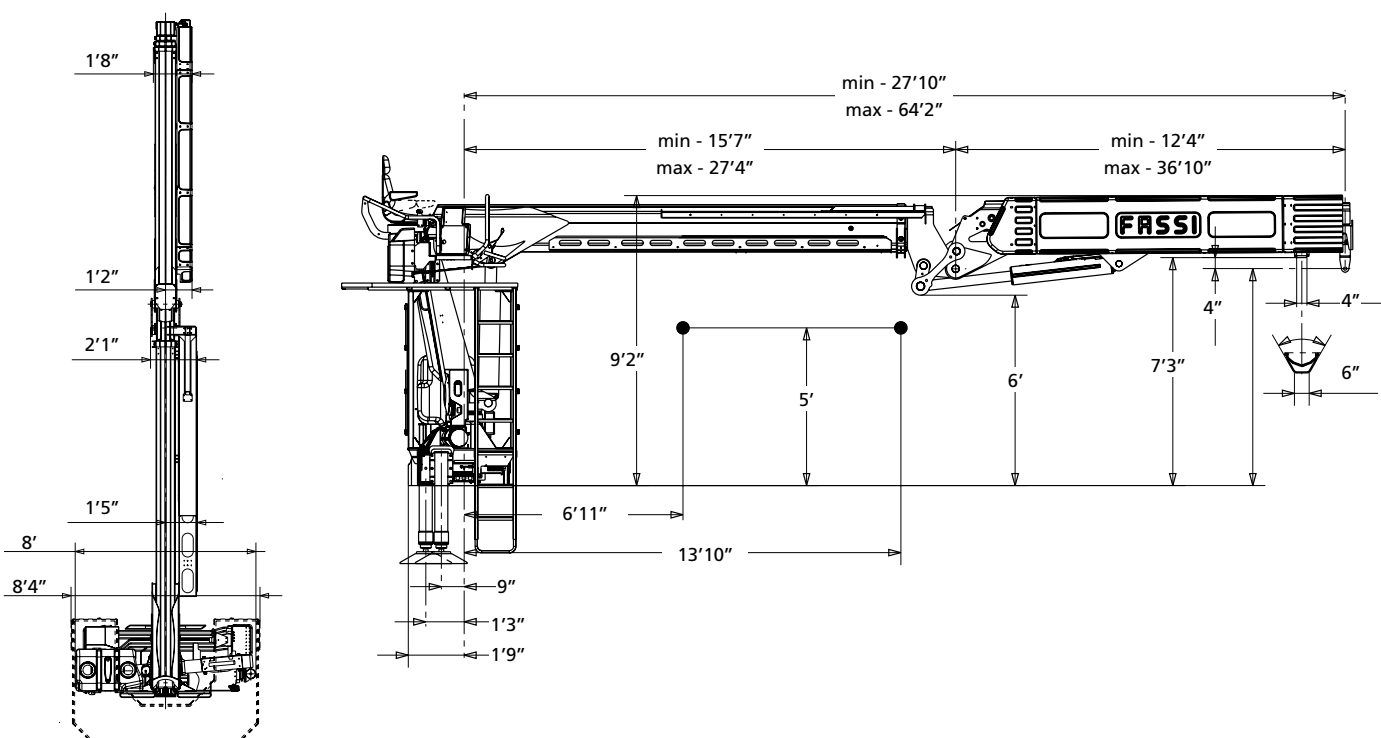
TECHNICAL DATA

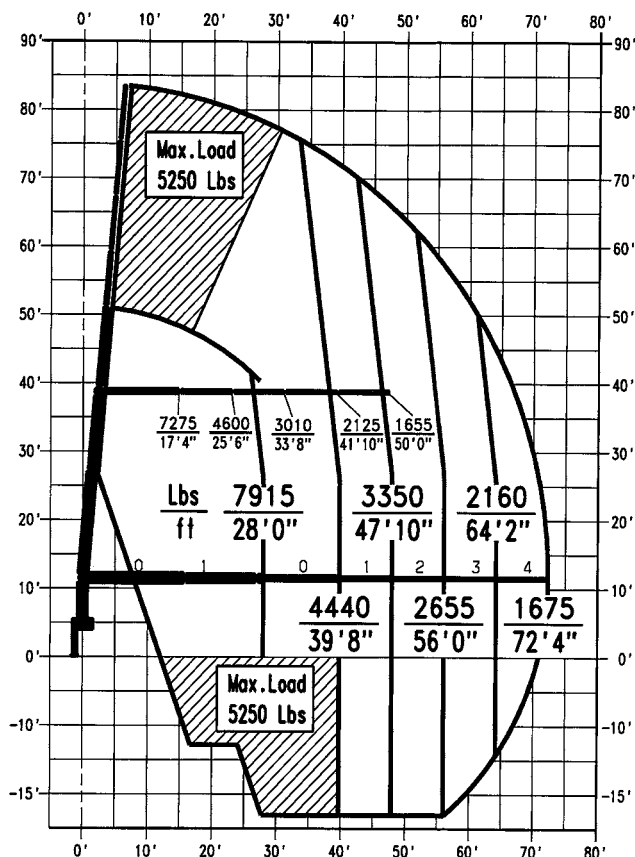
F375SE.13

Lifting capacity	232641 lbs.ft
Standard reach	64'2" ft
Hydraulic extension	36'3" ft
Rotation arc	430°
Rotation torque	33928 lbs.ft
Working pressure	4714 psi
Pump capacity	21-21 gal/min
Oil tank capacity	66 gal
Outriggers spread crane	25'7" ft
Supplementary outriggers	-
Degree of boom elevator	82,5°
Weight	10141 lbs

**CERTIFIED
DYNAMIC
PERFORMANCE**

Dynamic load diagrams calculated, tested and certified to lift the loads at the declared reaches unless indicated



PLACING CAPACITY CHART WITH LIFTING MOMENT LIMITING DEVICE
CRANE TYPE
F375SE.14

DO NOT STAY UNDER SUSPENDED LOADS

THE WEIGHT OF WALLBOARD FORK AND ROTATOR MUST BE DEDUCTED FROM LIFTING CHART.

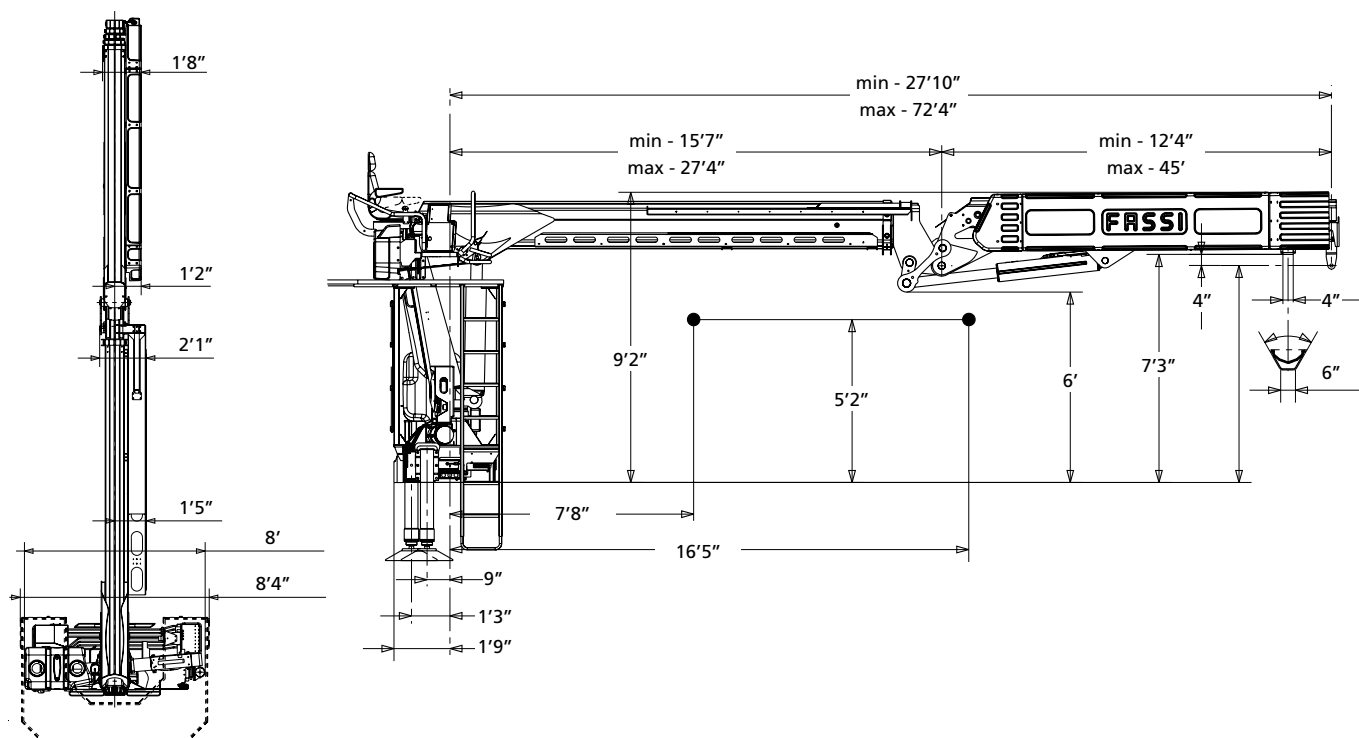
DE17583

TECHNICAL DATA
F375SE.14

Lifting capacity	221821 lbs.ft
Standard reach	72'4" ft
Hydraulic extension	44'5" ft
Rotation arc	430°
Rotation torque	33928 lbs.ft
Working pressure	4714 psi
Pump capacity	21-21 gal/min
Oil tank capacity	66 gal
Outriggers spread crane	25'7" ' ft
Supplementary outriggers	-
Degree of boom elevator	82,5°
Weight	10692 lbs

CERTIFIED
DYNAMIC
PERFORMANCE

Dynamic load diagrams calculated, tested and certified to lift the loads at the declared reaches unless indicated



SE SERIE - F390SE - F360SE - F330SE - F280SE

FEATURES



FX500 - Fassi Electronic Control

The FX500 electronically controls the load conditions of the crane and the hydraulic and manual winch extensions, specific to the particular crane model on which it is installed. The FX500 is also able to activate different work sectors, in relation to the stability of the crane and vehicle, as it is in use.



RCH/RCS - Radio Remote Control *

The new-generation digital radio remote control, exclusively compatible with the Fassi product, with wide graphic display to remotely control the functions of the crane and, optionally, the vehicle and the outriggers. It automatically researches the available frequency and allows for continuous interaction between operator and crane.



TOP SEAT - Work in comfort*

An ergonomic seat in a position of safety allows the operator complete control when executing specific manoeuvres and lifting operations. The seat is completely adjustable to accommodate to the most comfortable working position for the operator and is also available in a heated version.

STANDARD CONFIGURATION



S900 - Digital Multifunction Distributor Bank

High performances multifunction compensated distributor bank with very high "load-sensing" proportional multifunction ability; all crane functions are perfectly controlled, proportional and smooth. Ideal for the application on heavy range cranes.



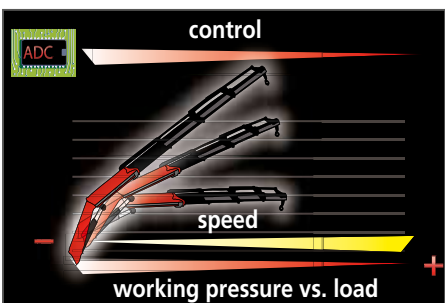
OTC - Oil Temperature Control

Fitted inside the oil cooler, this electronically controlled, analogic temperature sensor is capable of maintaining an optimal hydraulic system temperature even in the most stressful working conditions. Temperature readings are displayed on the user control panel and the radio remote control display.



FS - Flow Sharing

Fassi's flow sharing enables the operation of multiple functions at the same time by distributing the available oil flow proportionally to the desired functions and at the desired speed.



ADC - Automatic Dynamic Control**

A control system developed by Fassi automatically controlling the dynamics of all the crane functions maximizing the speed of movement depending on the handled load, allowing only controlled movements and minimizing the structural stress on both the crane and the frame/sub frame of the vehicle.



MPES - Multi Power Extension System

A Fassi system that guarantees an exceptional extension/retraction speed of the telescopic booms, built up by a set of equally powerful independent rams, linked in series connection and activated by a single control. Special independent fixing system of the extension rams to guarantee high vertical lifting performances.

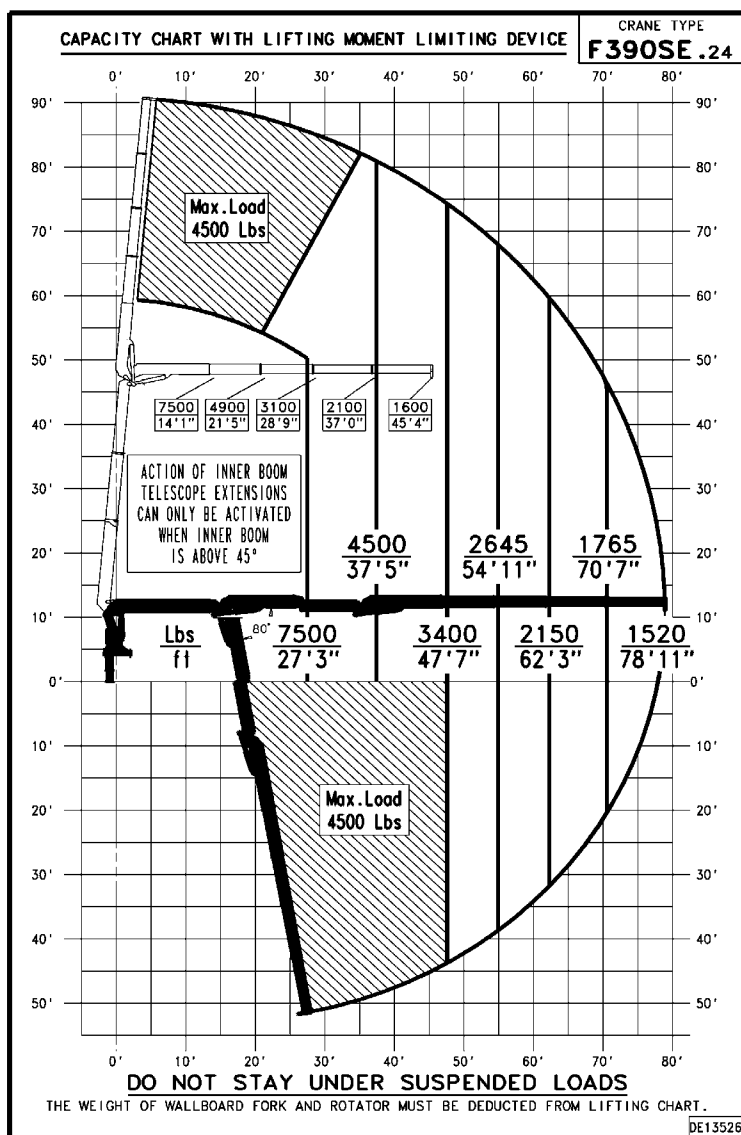


UHSS - Ultra High Strength Steel

Ultra high strength steel has a high elastic limit that increases structural strength and resistance of the crane components while reducing the weight of the crane and increasing a vehicle's potential payload.

* option

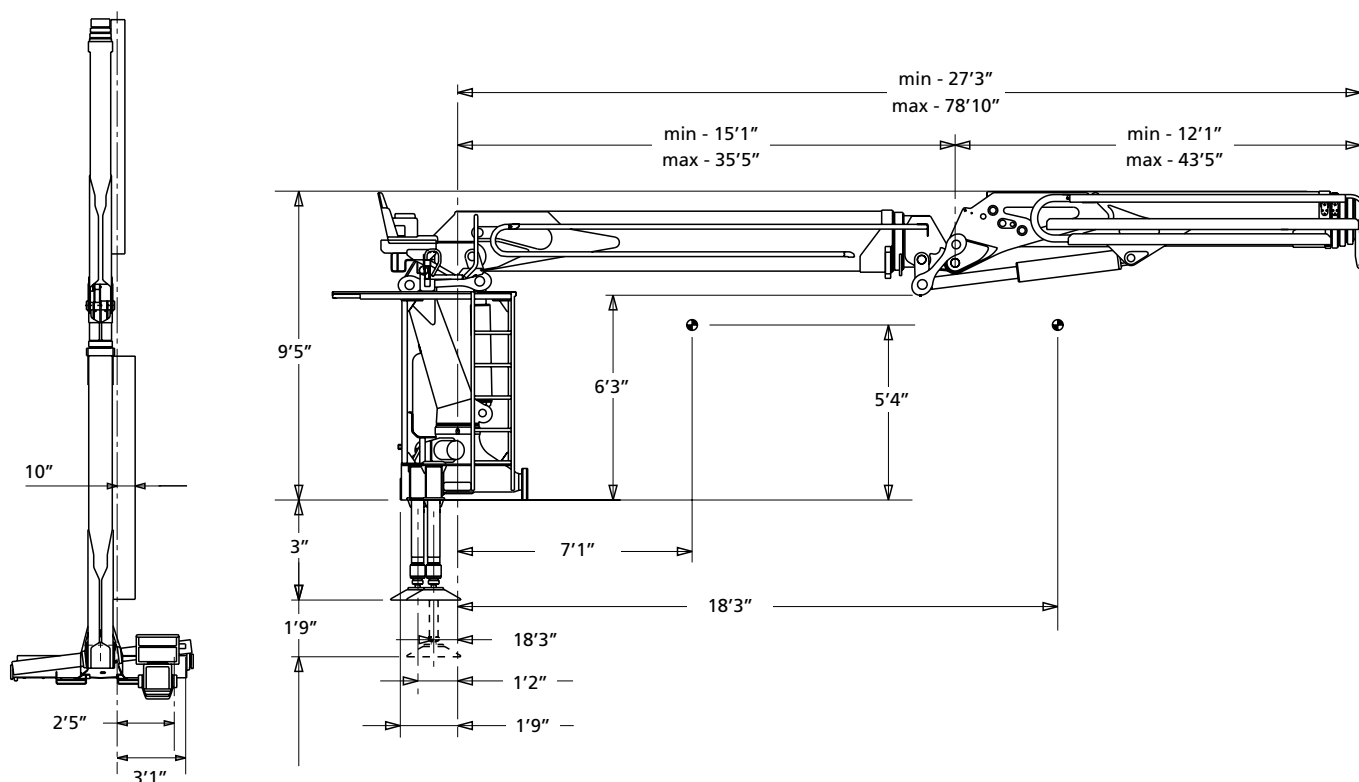
** standard for cranes with radio remote control


TECHNICAL DATA
F390SE.24

Lifting capacity	202524 lbs.ft
Standard reach	78'10" ft
Hydraulic extension	51'5" ft
Rotation arc	430°
Rotation torque	49112 lbs.ft
Working pressure	4206 psi
Pump capacity	15,85 gal/min
Oil tank capacity	66 gal
Outriggers spread crane	23'6" ft
Supplementary outriggers	16'4" ft
Degree of boom elevator	80°
Weight	14835 lbs

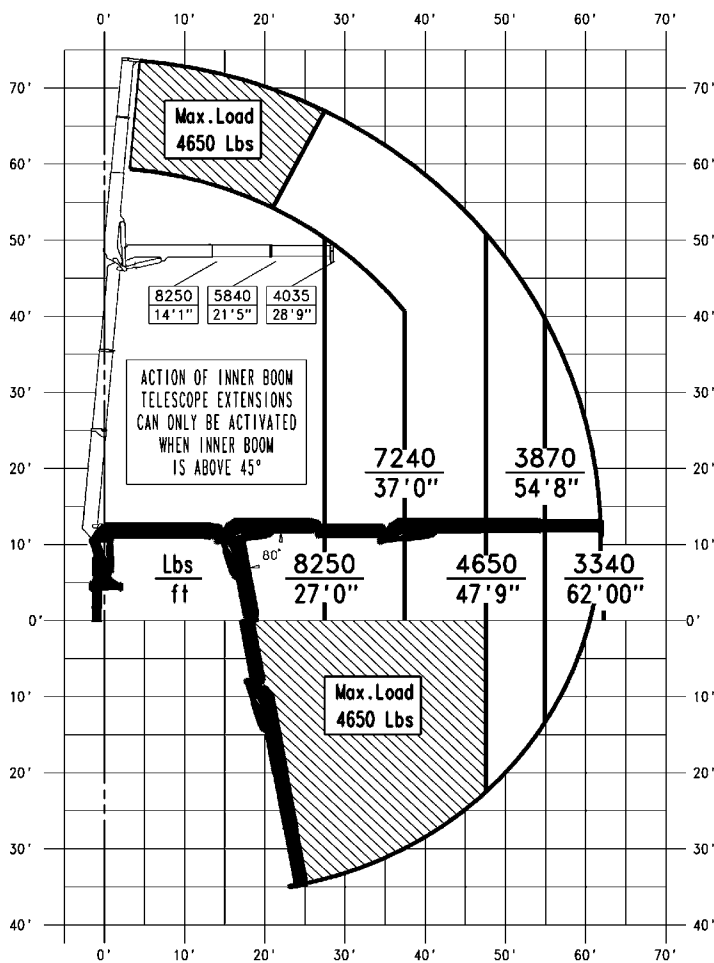
**CERTIFIED
DYNAMIC
PERFORMANCE**

Dynamic load diagrams calculated, tested and certified to lift the loads at the declared reaches unless indicated



CAPACITY CHART WITH LIFTING MOMENT LIMITING DEVICE

CRANE TYPE
F390SE.22



DO NOT STAY UNDER SUSPENDED LOADS

THE WEIGHT OF WALLBOARD FORK AND ROTATOR MUST BE DEDUCTED FROM LIFTING CHART.

DE13527

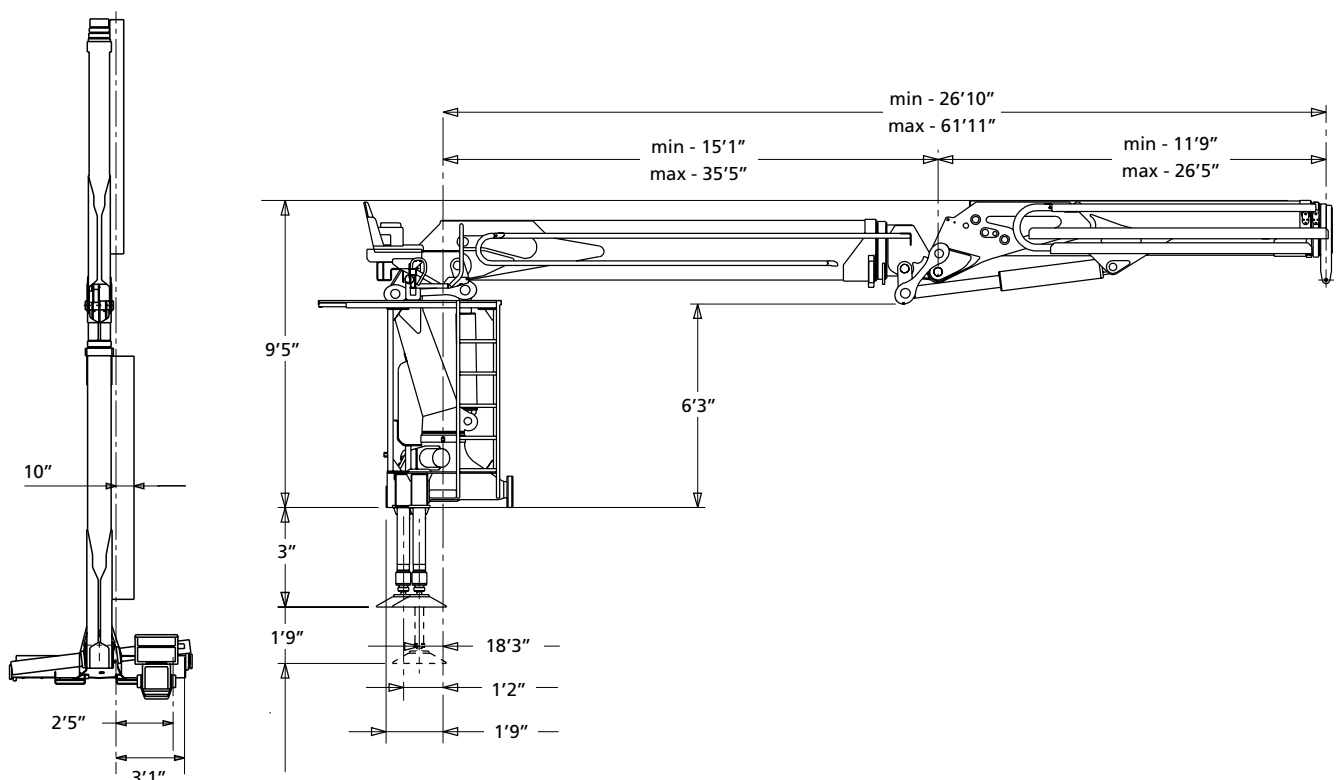
TECHNICAL DATA

F390SE.22

Lifting capacity	267622 lbs.ft
Standard reach	61'10" ft
Hydraulic extension	34'5" ft
Rotation arc	430°
Rotation torque	49112 lbs.ft
Working pressure	4206 psi
Pump capacity	15,85 gal/min
Oil tank capacity	66 gal
Outriggers spread crane	23'6" ft
Supplementary outriggers	16'4" ft
Degree of boom elevator	80°
Weight	12566 lbs

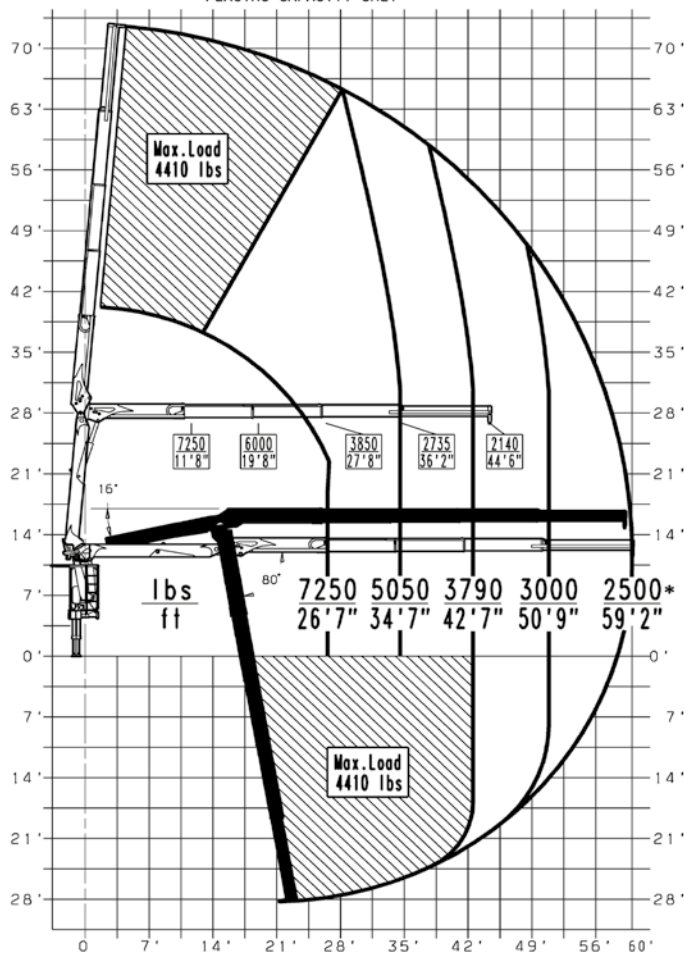
**CERTIFIED
DYNAMIC
PERFORMANCE**

Dynamic load diagrams calculated, tested and certified to lift the loads at the declared reaches unless indicated



CAPACITY CHART WITH LIFTING MOMENT LIMITING DEVICE
*PLACING CAPACITY ONLY

CRANE TYPE
F360SE.24



DO NOT STAY UNDER SUSPENDED LOADS

THE WEIGHT OF WALLBOARD FORK AND ROTATOR MUST BE DEDUCTED FROM LIFTING CHART.

DE13528

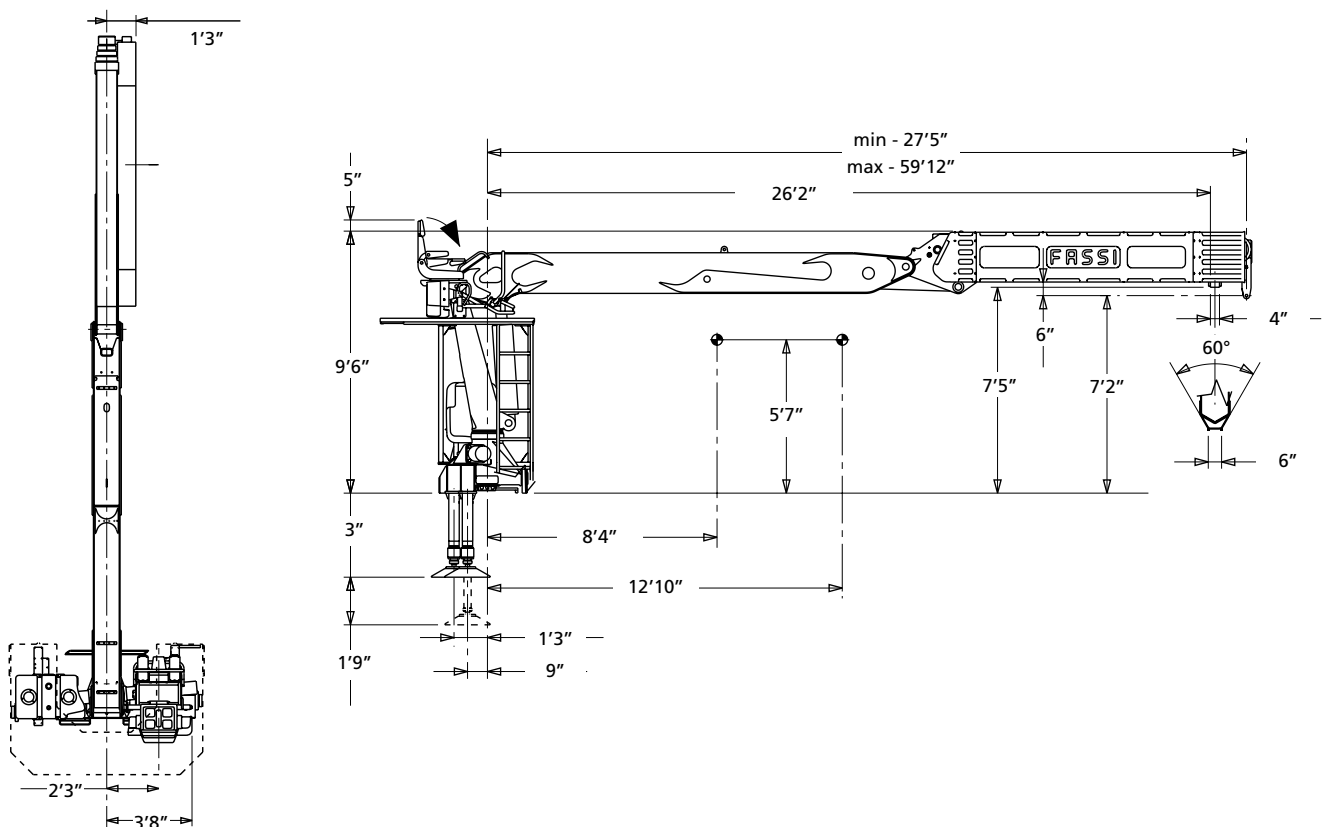
TECHNICAL DATA

F360SE.24

Lifting capacity	192398 lbs.ft
Standard reach	60'0" ft
Hydraulic extension	32'7" ft
Rotation arc	430°
Rotation torque	33923 lbs.ft
Working pressure	4351 psi
Pump capacity	15,85 gal/min
Oil tank capacity	66 gal
Outriggers spread crane	23'6" ft
Supplementary outriggers	-
Degree of boom elevator	80°
Weight	11685 lbs

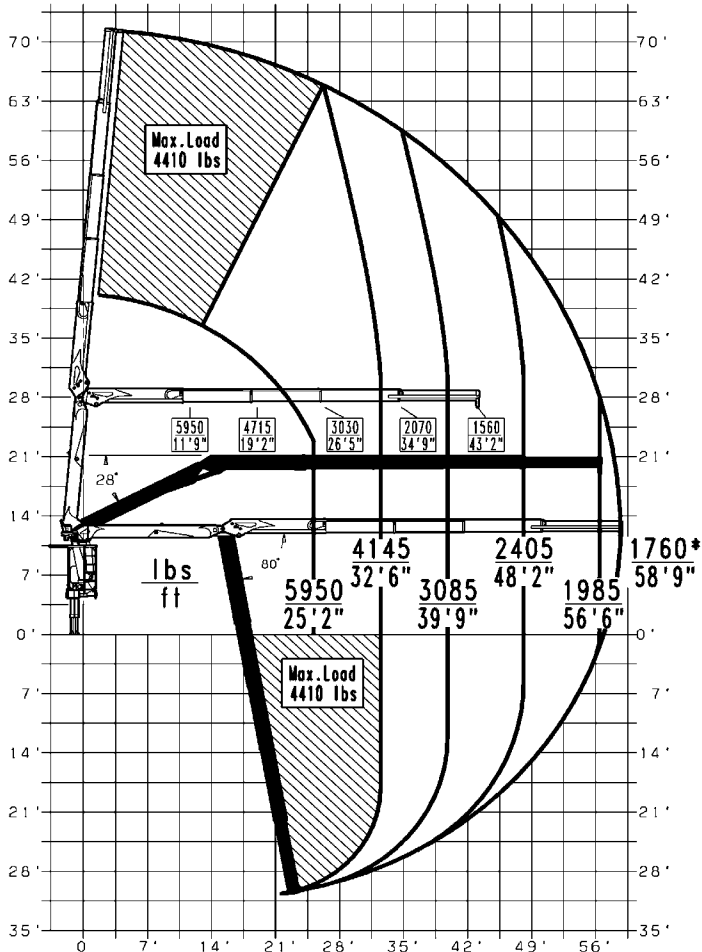
**CERTIFIED
DYNAMIC
PERFORMANCE**

Dynamic load diagrams calculated, tested and certified to lift the loads at the declared reaches unless indicated



CAPACITY CHART WITH LIFTING MOMENT LIMITING DEVICE
*PLACING CAPACITY ONLY

CRANE TYPE
F330SE.24



DO NOT STAY UNDER SUSPENDED LOADS

THE WEIGHT OF WALLBOARD FORK AND ROTATOR MUST BE DEDUCTED FROM LIFTING CHART.

DE13529

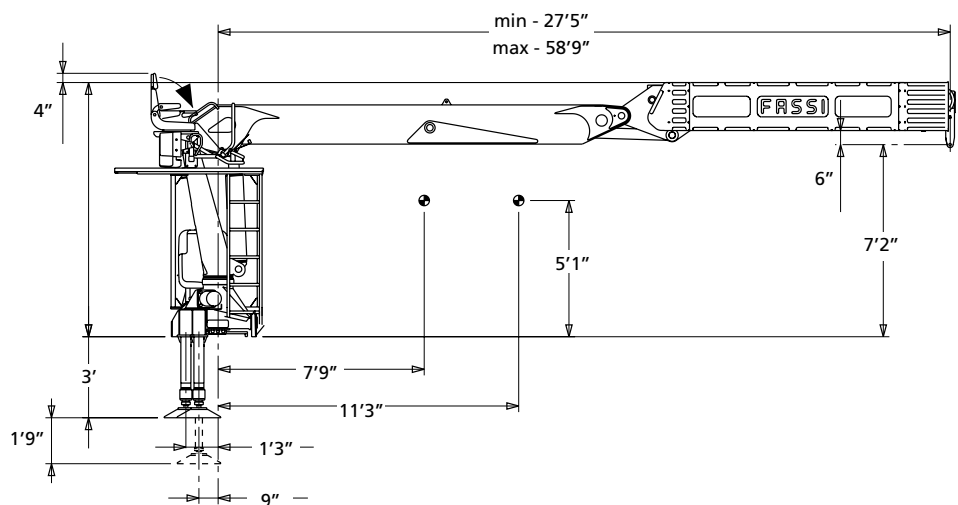
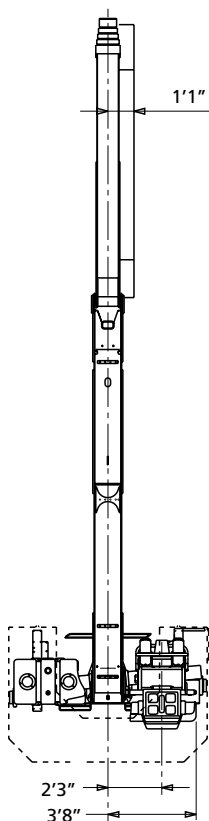
TECHNICAL DATA

F330SE.24

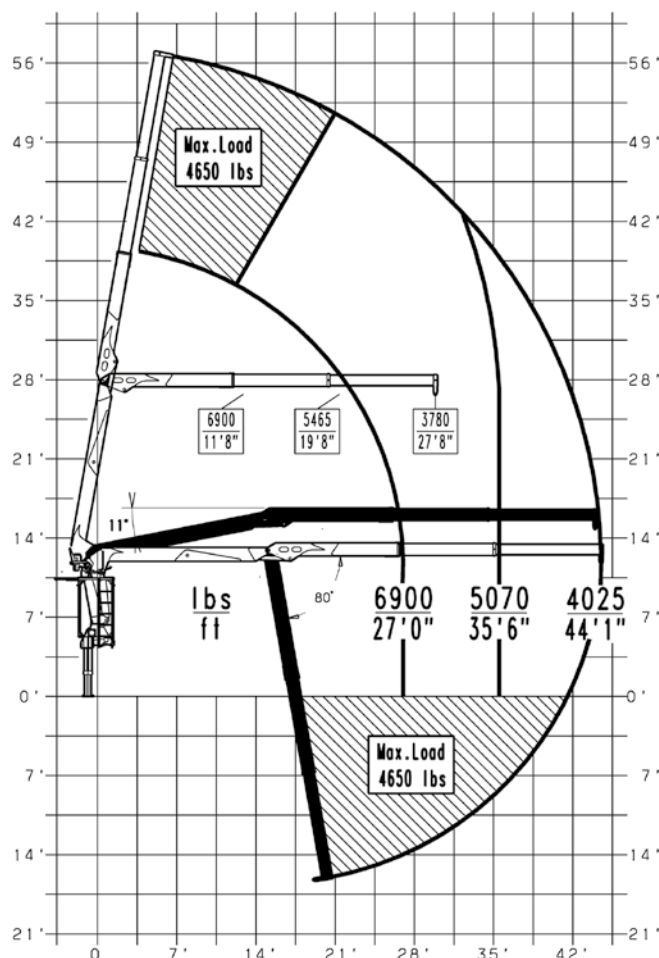
Lifting capacity	134534 lbs.ft
Standard reach	58'8" ft
Hydraulic extension	31'3" ft
Rotation arc	430°
Rotation torque	33923 lbs.ft
Working pressure	3626 psi
Pump capacity	15,85 gal/min
Oil tank capacity	66 gal
Outriggers spread crane	23'6" ft
Supplementary outriggers	-
Degree of boom elevator	80°
Weight	11095 lbs

**CERTIFIED
DYNAMIC
PERFORMANCE**

Dynamic load diagrams calculated, tested and certified to lift the loads at the declared reaches unless indicated



CAPACITY CHART WITH LIFTING MOMENT LIMITING DEVICE

 CRANE TYPE
F280SE.22

DO NOT STAY UNDER SUSPENDED LOADS

THE WEIGHT OF WALLBOARD FORK AND ROTATOR MUST BE DEDUCTED FROM LIFTING CHART.

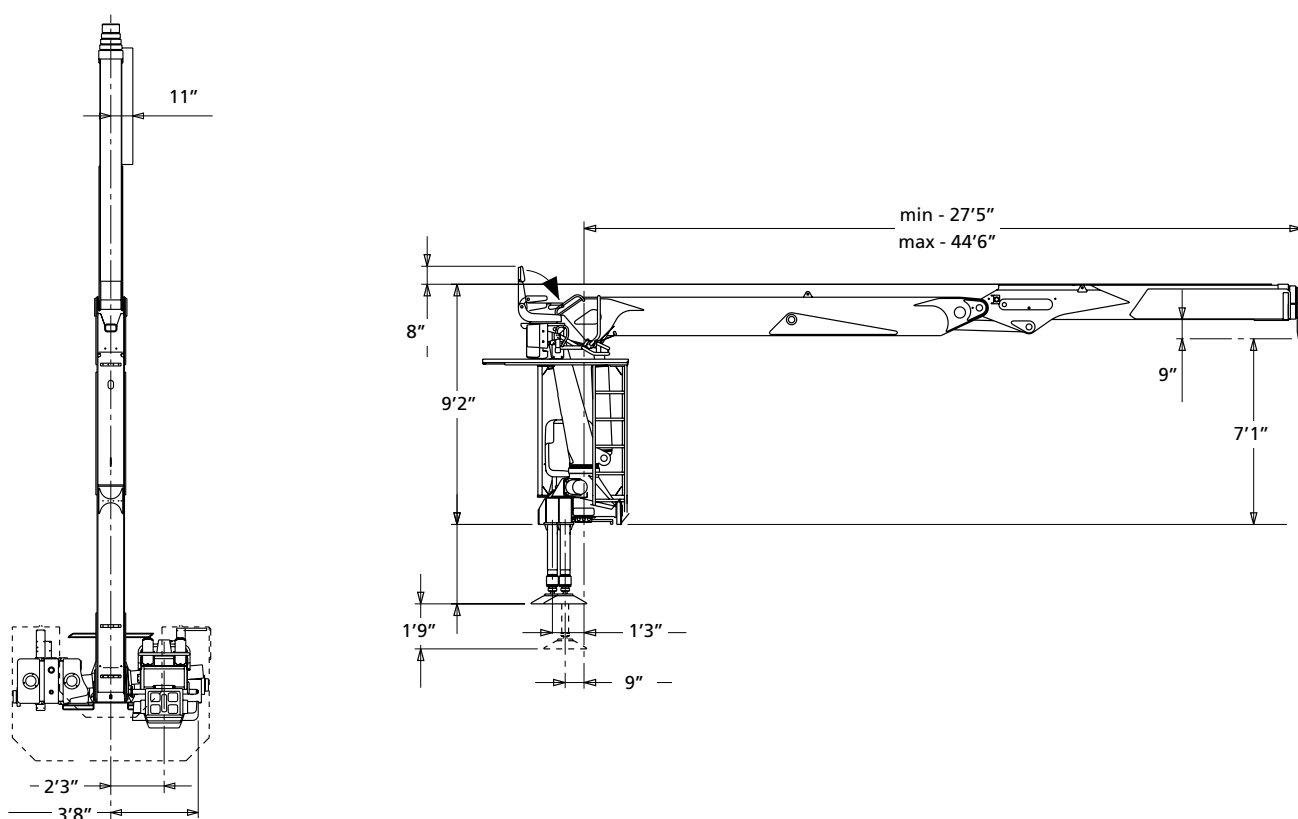
DE13530

TECHNICAL DATA
F280SE.22

Lifting capacity	186612 lbs.ft
Standard reach	44'5" ft
Hydraulic extension	17'0" ft
Rotation arc	430°
Rotation torque	38841 lbs.ft
Working pressure	3626 psi
Pump capacity	15,85 gal/min
Oil tank capacity	66 gal
Outriggers spread crane	23'6" ft
Supplementary outriggers	-
Degree of boom elevator	85°
Weight	9605 lbs

**CERTIFIED
DYNAMIC
PERFORMANCE**

Dynamic load diagrams calculated, tested and certified to lift the loads at the declared reaches unless indicated







Lifting Tomorrow



LEADER IN INNOVATION



Data and descriptions are approximate and not binding
Realized by Fassi Gru S.p.A. © 2020 - all right reserved - Reproduction in whole or in part of texts and pictures published on this site on magnetic storage media, digital storage media etc. is prohibited

SE SERIE

06/2020