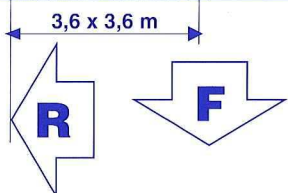
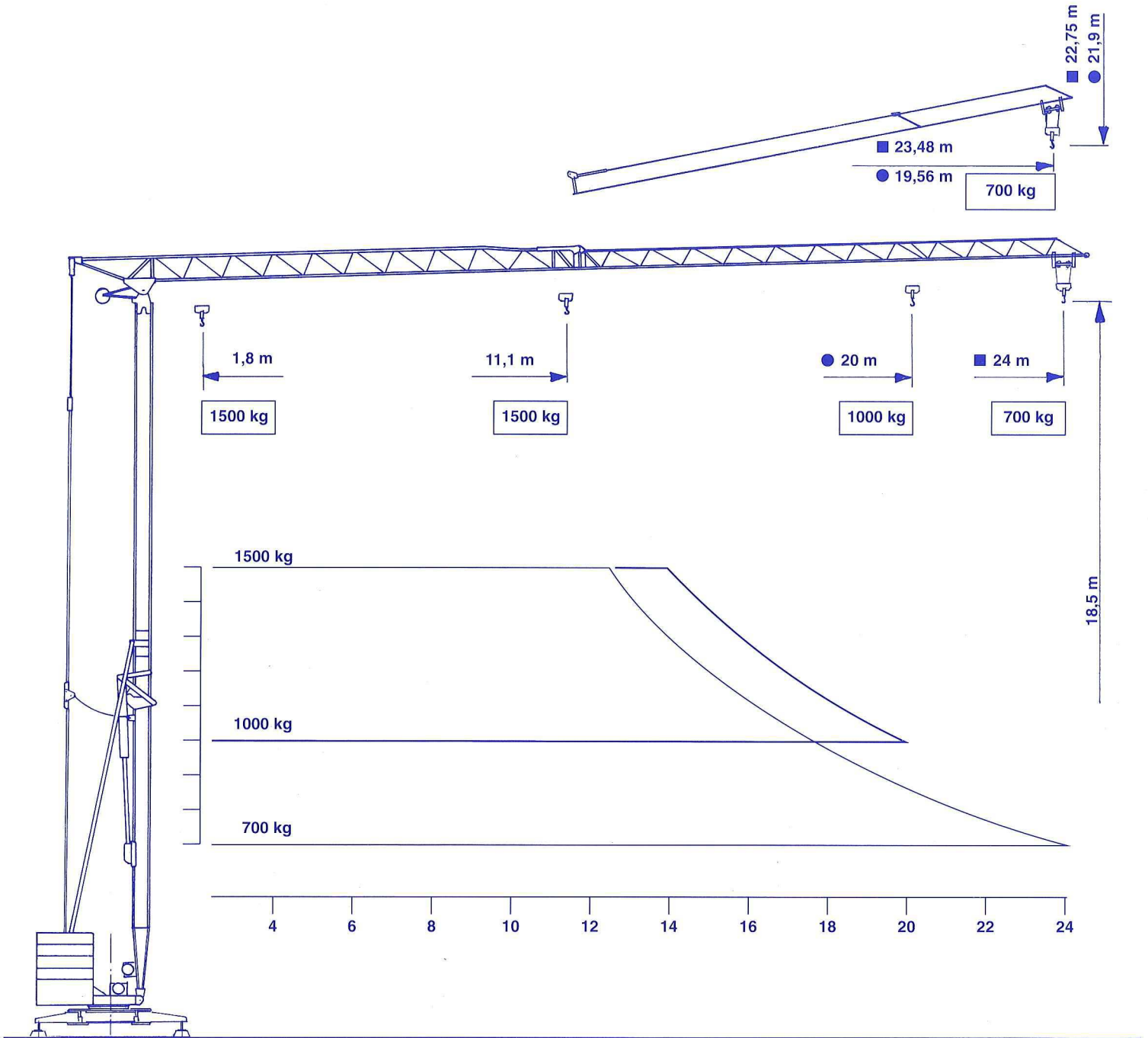


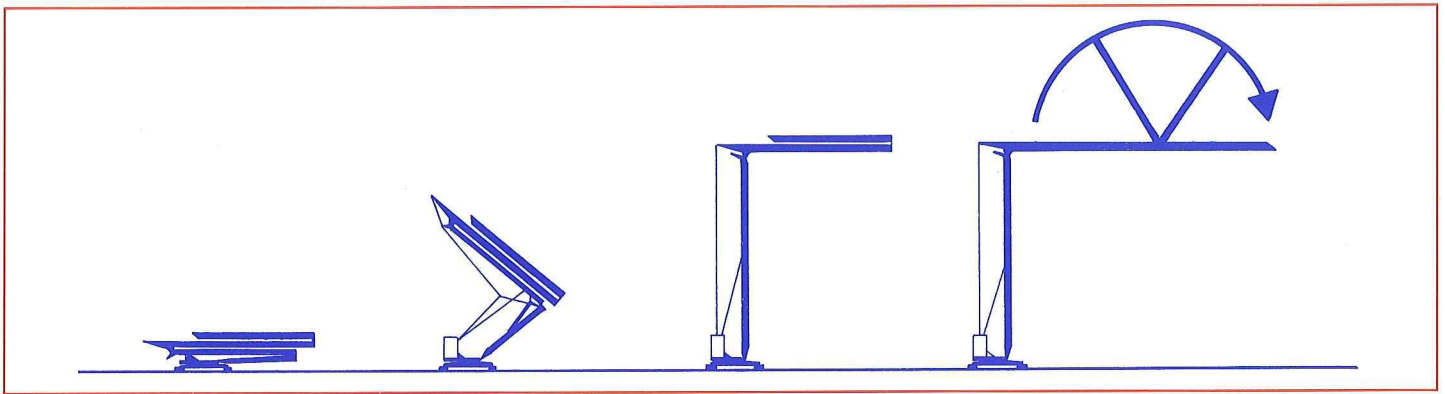
# gru fari



Raggio di rotazione	Max. reazione appoggio	Zavorra contrappeso
Radius of rotation	Max. wheel load	Counter weight
Rayon de rotation	Pression max. par galot	Contrepoids
Drehradius	Max. Eckdruck	Gegengewicht
Radio de giro	Max. reaccion de apoyo	Lastre de contrapeso
<b>R</b> 1,9 m	<b>F</b> 12000 daN	<b>Z</b> 12200 kg

Modello  
Model  
Type  
Typ  
Tipo

# FH 20.1



**Meccanismi - Mechanisms - Mécanismes - Antriebe - Mecanismos**

Sollevamento Hoisting Levage Heben Elevación	MS 5H T			m./min.	Kg.	HP	KW
				4	1.500	5	4
17	1.500						
34	700						
MS 5H MT			3	1.500	3	2,2	
			11	1.000			
			22	500			

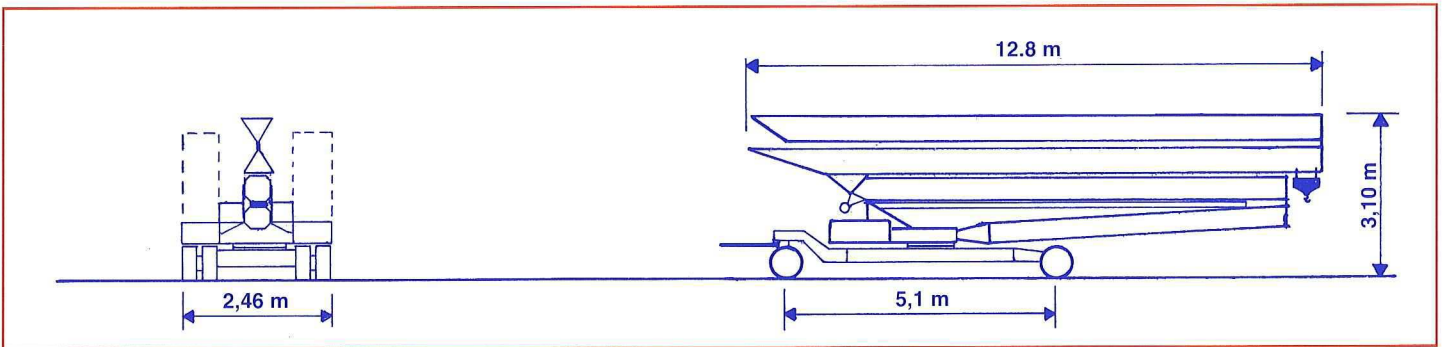
Distribuzione - Trolleying - Distribution - Katzfahren Distribución			10	m/min	2	1,5
			25	m/min		
			50	m/min		

Rotazione - Slewing - Orientation - Schwenken Orientación			0,2	giri/min	1,5	1,1
			0,5	giri/min		
			0,9	giri/min		

Rete elettrica - Mains supply - Réseau - Netzstrom - Red	220/380 V	50 Hz
--	-----------	-------

Potenza elettrica necessaria - Necessary electric power - Puissance électrique nécessaire Anschlusswert - Potencia eletrica necesaria	MS 5H T	6 KW
	MS 5H MT	3 KW

Conforme alla direttiva CEE 87/405 sul livello acustico. In compliance with the EEC 87/405 instruction on noise level. Conforme à la directive CEE 87/405 sur le niveau acoustique. Gemäss EWG-Richtlinie 87/405 Schall-Leistungspegel. Conforme con la direttiva CEE 87/405 sobre el nivel acustico.



# gru fari

**OFFICINE FARI SRL**  
**via Roma 192**  
**36070 Castelgomberto (Vicenza) Italy**  
**tel. 0445/940051 - fax 0445/941363**

**FH 20.1**

Modificazioni riservate - Änderungen vorbehalten - Modifications réservées - Änderungen vorbehalten - Modifiche riservate - Subject to modification