

# HYDRA 12

## THE POWER OF EXTRA REACH

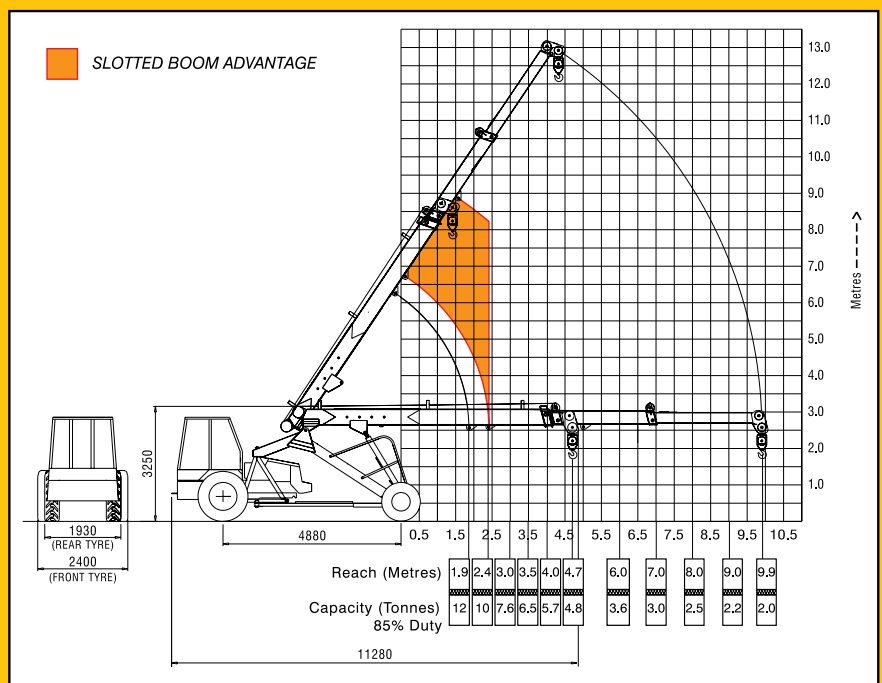
- Slotted Boom • Higher Capacity Winch • Rope Compensation



# Pick 'n' Carry Crane Hydra-12 with Slotted Boom

## SALIENT FEATURES :

- Longer 3 Part hydraulically telescoping slotted boom with travelling hook for better out reach and higher lift duties.
- Self compensating snatch block for auto leveling of loads.
- New Technology Control Valve for Precision Handling.
- Heavy duty winch motor for heavier lift duties.
- Articulated chassis for short turning radius.



## Specifications :

Engine		Tyres	
Make & Model	Simpson S-433 Four Cylinder, Water Cooled Diesel Engine Rated power for crane 49 BHP @ 2200 RPM (Max continuous engine rating 59 HP @ 2300 RPM) or equivalent Engine	Front	11.00x20-16PR(Four Nos.)
		Rear	13.00x24-12PR(Two Nos.)
Transmission		Boom	
Type	Heavy duty transmission developed especially for crane application. Sliding Mesh, spur teeth gearbox. Six forward and two reverse speeds with high and low selector lever	Telescoping	Three part box type hydraulically operated, synchronised
Speed	Travel Speed 25 Kmph - restricted as per safety norms (without load)	Derricking	Through double acting jacks.
Clutch	Single plate, heavy duty dry friction type clutch plate especially designed for crane application	Hoist Mechanism	
		Hoist	Four falls, Hydraulic 10T winch capacity. Rope dia 13mm
Steering		Hydraulic System	
Type	Articulated power steering, hydraulically controlled through 2 double acting jacks	Pump	Pin Vane Type Hydraulic pump.
Articulation	upto 56°	Control Valve	4 spool control valve with built in pressure relief valve for precision handling
Turning Radius	6.5m	Hydraulic Filter	Suction line has a 100 mesh inline strainer while return line has 25micron full flow filter
Operational Timings (no load at rated engine RPM)		Electrical System	
Steering (lock to lock)	6-10 secs	Type	12V Single battery, Negative earth
Boom Raising	23-28 secs	Capacities	
Boom Lowering	19-24 secs	Fuel Tank	45 Ltrs.
Telescoping Extension in	9-11 secs	Hydraulic Tank	90 Ltrs.
Telescoping Extension out	14-16 secs	Axle Reduction	2.45 Ltrs
Hoist Line Speed	53m/min. max.( Single line)	Operating Weight (Kgs)	10750
Brakes		Safety System	
Front Wheel	Pneumatically assisted hydraulic brakes	• Overload audio warning system	• Safety brakes on hoist
Rear Wheel	Mechanical shoe brakes actuated through a slave cylinder	• Hose protection failure device	• Cylinder guard for protection
Parking	Mechanically actuated at rear wheels	Standard Accessories	
Track		• All weather cabin	• Front Bumper
Front	1930mm(center of twin wheels)	• Lift Cylinder Guard	• Rear View Mirror
Rear	1570mm(center of wheels)	Optional Accessories	
		• Fly jib 2.3m length	• Fire Extinguisher
		• Air conditioned cabin	• Steering Wheel
		• Safe load indicator with hydraulic cut off	• Six falls, (winch capacity 12T)
			• Spark Arrestor
			• Extra hooks

## A wide national network of Business Centres and Dealers

- **Ahmedabad** : (079) 40063445, 9879006280 • **Bangalore** : (080) 23398809, 9448046310 • **Bhopal** : (0755) 2551955 9826824111
- **Bhubaneswar** : (0674) 2588775, 9937028870 • **Chandigarh** : (0172) 5017995, 9417603041 • **Chennai** : (044) 42153707-D, 9840852996
- **Dehradun** : (0135) 2672647, 9837755999 • **Guwahati** : (0361) 2733246, 9435342785 • **Hyderabad** : (040) 27842451, 9849992003
- **Jaipur** : (0141) 2760904, 9929077866 • **Kanpur** : 9839211591 • **Kolkata** : (033) 24862028-D, 9830108037 • **Lucknow** : (0522) 4003683, 2371901, 9839065688
- **Mumbai** : (022) 24218150, 9821458206 • **Nagpur** : (0712) 6450713, 9822224489 • **New Delhi** : (011) 26444821, 9871598288
- **Pune** : (020) 40089771, 9823068664 • **Ranchi** : (0651) 2531340, 9431108578 • **Visakhapatnam** : (0891) 25632345, 9866637270

## ESCORTS CONSTRUCTION EQUIPMENT LIMITED

Plot No: 2, Sector-13, Faridabad 121 007

Tel.: (0129) 2221481/2261323/2283073/2286694 Fax: (0129) 2264638/2261323

Website: [www.ecel.com](http://www.ecel.com), [marketing@escorts-ecel.com](mailto:marketing@escorts-ecel.com)

• The information contained in this leaflet is intended to be of a general nature only. • We reserve the right to change specifications without notice. • All Dimensions and Weights are variable within +/- 5 %

Courtesy of Crane.Market