

ESCORTS K-10

Hydraulic Mobile Pick-n-Carry Crane of 10T Capacity



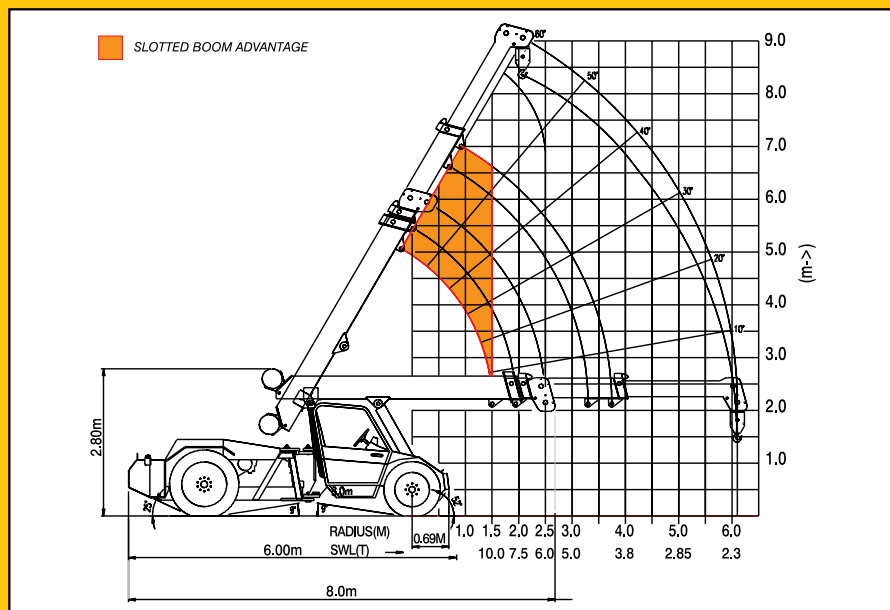
The New
Generation
Pick 'N' Carry
Crane



Pick 'n' Carry Crane K-10

SALIENT FEATURES :

- Front Mounted Cabin-Excellent Visibility, Drivability & Control
- Compact Dimension - High Maneuverability
- 3 Part synchronised boom - Large Working range and high lift duties
- Self Compensation Hook system
- New Technology Control Valve for Precision Handling



Specifications :

Engine		Boom	
Make & Model	Simpson S-433 Four Cylinder, Water Cooled Diesel Engine Rated power for crane 49 BHP @ 2200 RPM (Max continuous engine rating 59 HP @ 2300 RPM) or equivalent Engine	Telescoping	Three part Boom, Hydraulically telescopic synchronised
Transmission		Derricking	Through double acting jack.
Type	Heavy duty transmission developed especially for crane application. Sliding Mesh, spur teeth gearbox. Six forward and two reverse speeds with high & low selector lever.	Hoist Mechanism	
Speed	Travel Speed 25 Km/h - restricted as per safety norms (without load)	Hoist	Four falls, Hydraulic winch, Fully compensated block with 8.4 m hook travel, safety brake on hoist. Rope dia 13mm
Clutch	Single plate, heavy duty dry friction type clutch plate especially designed for crane application.	Hydraulic System	
Steering		Pump	Pin Vane type hydraulic pump.
Type	Articulated power steering, through steering wheel	Control Valve	3 spool control valve with built in pressure relief valve for precision handling
Articulation	45°	Hydraulic Filter	Suction line has a 100 mesh inline strainer while return line has 25 microns full flow filter
Turning Radius	5980 mm	Electrical System	
Operational Timings (no load at rated engine RPM)		Type	12V Single battery, Negative earth
Boom Raising	14-18 secs	Capacities	
Boom Lowering	8-12 secs	Fuel Tank	90 Ltrs.
Telescopic Extension in	6-8 secs	Hydraulic Tank	90 Ltrs.
Telescopic Extension out	8-10 secs	Weights	
Hoist Line Speed	60m/min	Front Axle	3700 kgs.
Brakes		Rear Axle	6000 kgs
Front Wheel	Pneumatically assisted hydraulic brakes	Total (shipping)	9700 kgs
Rear Wheel	Mechanical shoe brakes actuated through hydraulic slave cylinder	Safety System	
Parking	Mechanically actuated on rear wheels	• Safety brakes on hoist	• Hose protection failure device
Track		• Cylinder guard for protection	• Rope Compensation System
Front	1900mm(center of twin wheels)	Standard Accessories	
Rear	1570mm(center of wheels)	• All weather front mounted cabin	• Tools and tackle box
Tyres		• Lift Cylinder Guard	• Cabin fan
Front	11.00x20-16PR(Four Nos.)	• Rear View Mirror	• Turn & Reverse lamp
Rear	13.00x24-12PR(Two Nos.)	Optional Accessories	
Aisle Width	2440 mm	• Overload warning system	• Fly jib 2.3m
		• Left hand drive	• Air conditioned cabin
		• Safe load indicator with hydraulic cut off	• Fire Extinguisher
			• Spark Arrester
			• Beacon Light



ESCORTS CONSTRUCTION EQUIPMENT LIMITED

Plot No: 219, Sector-58, Ballabgarh, Faridabad (Haryana) - 121 004, India

Tel.: (0129) 2306300/2306570, Fax: (0129) 2306463

E-mail: marketing@escorts-ecel.com, Website: www.ecel.com