

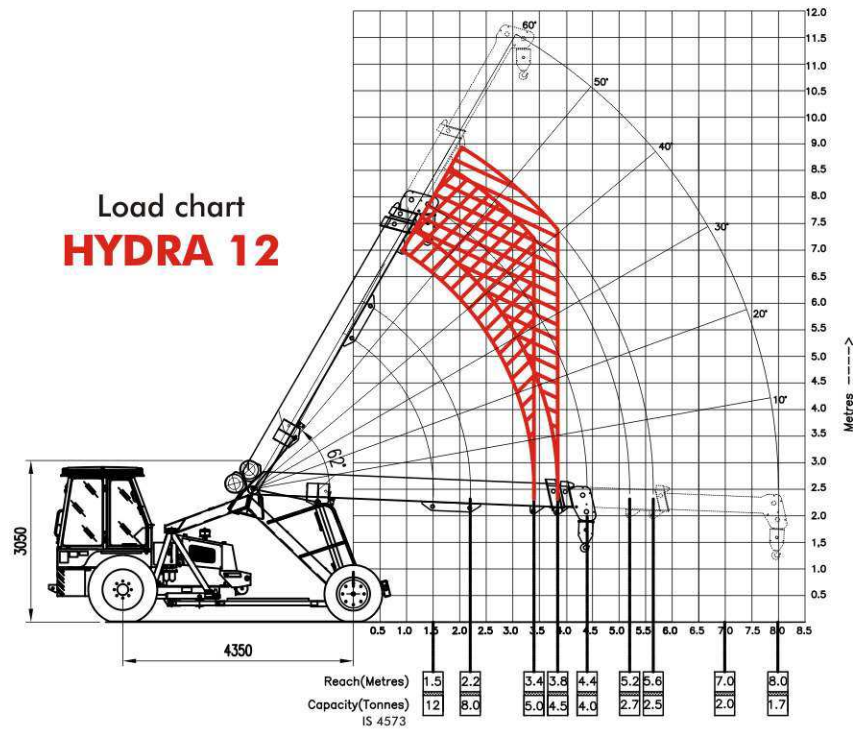
HY-12

- 3 Part hydraulically telescoping slotted boom
- Self Compensating Snatch Block
- Heavy duty planetary drive hydraulic Winch
- Articulated chassis
- New technology Control Valve
- Heavy duty transmission



Pick 'n' Carry Crane

Load chart HYDRA 12



Technical Data

ENGINE

- Make & Model: Simpson S-433 Four Cylinder, Water Cooled Diesel Engine Rated power for crane 49 BHP @ 2200 RPM (max continuous engine rating 59 @ 2300 RPM) or equivalent Engine

TRANSMISSION

- Type: Heavy duty transmission developed specially for crane application Sliding Mesh, spur teeth gearbox. Six forward and two reverse speeds with high and low Selector lever
- Speed: Travel speed 25kmph restricted as per safety norms (without load)
- Clutch: Single plate, heavy duty dry friction type clutch plate especially designed for crane application

STEERING

- Type: Articulated power steering, hydraulically controlled through 2 double acting jacks
- Articulation: upto 56°
- Turning Radius: Minimum 5.2m

OPERATIONAL TIMINGS

- Steering (lock to lock): 6-10 secs
- Boom Raising: 18-22 secs
- Boom lowering: 14-18 secs
- Telescoping Extn in: 7-9 secs
- Telescoping Extn out: 9-11 secs
- Hoist Line Speed: 53 m/min (Single line)

BRAKES

- Front Wheel: Pneumatically assisted hydraulic brakes
- Rear Wheel: Mechanical shoe brakes actuated through a slave cylinder
- Parking: Mechanically actuated at rear wheels

TRACK

- Front: 1880mm (center of twin wheels)
- Rear: 1570mm (center of wheels)

Technical Data

TYRES

- Front: 11.00 x20 -16PR (Four Nos.)
- Rear: 13.00 x24-12PR (Two Nos.)

BOOM

- Telescoping: Heavy duty, three part box type hydraulically operated
- Derricking: Through double acting jacks

HOIST MECHANISM

- Hoist: Four falls, hydraulic winch (Winch Capacity 10T) Rope dia 13mm. Non-rotating type

HYDRAULIC SYSTEM

- Pump: Pin Vane Type Hydraulic pump
- Control Valve: 4 spool control valve with built-in pressure relief valve & precision control
- Hydraulic Filter: Suction line has a 100 mesh inline strainer while line has 25 micron full flow filter

ELECTRICAL SYSTEM

- Type: 12 V Single battery, Negative earth

CAPACITIES

- Fuel Tank: 45 Ltrs.
- Hydraulic Tank: 90 Ltrs.
- Axle Reduction: 2.45 Ltrs.

OPERATING WEIGHT (Kg) 9720 kg.

SAFETY SYSTEM

- Overload audio warning system • Safety brakes on hoist • Hose protection failure device • Cylinder guard for protection • Self compensating snatch block

STANDARD ACCESSORIES

- All weather cabin • Front Bumper • Reflectors • Lift Cylinder Guard
- Rear View Mirror • Turn & reverse lamp

OPTIONAL ACCESSORIES

- Fly jib: 4.1m length • Fire extinguisher • Spark arrestor • Air conditioned cabin
- Steering wheel • Extra hooks • Man carrying basket • Safe load indicator with hydraulic cut-off

All Dimensions & Weights are variable within + 5%



Escorts Construction Equipment Limited

Plot No.2, Sector 13, Faridabad-121007, Haryana, India

Tel: 91-129-2261323, 2221481, 2285346, 2290791

• Fax: 91-129-2264638, 2283065, 2261323

E-mail: marketing@escorts-ecel.com • Website: www.ecel.com

Dealer Stamp/ Address