

# MAC 1214

## THE POWER OF UTILITY

• Lifting • Dragging • Towing

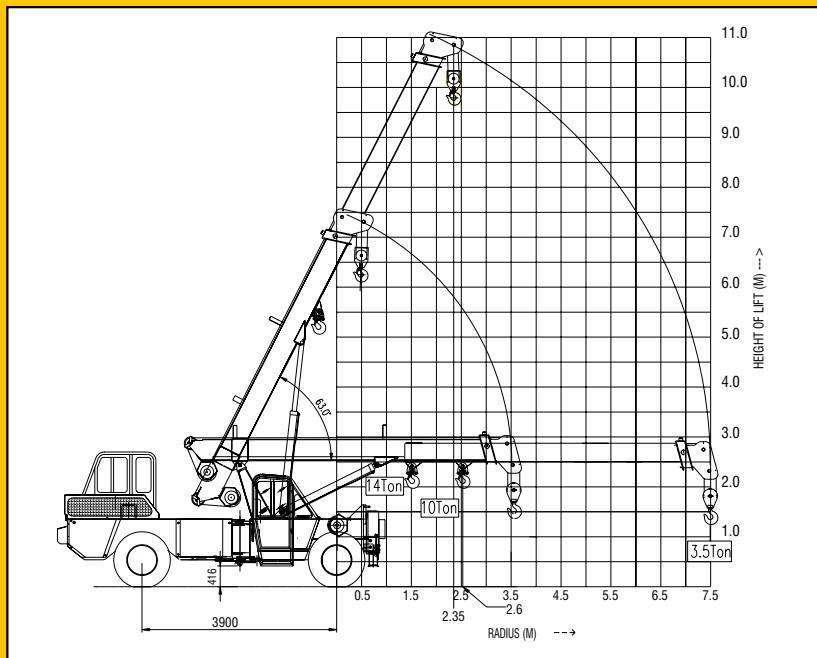


ESCORTS CONSTRUCTION EQUIPMENT LIMITED

# Pick 'n' Carry Crane MAC-1214

## SALIENT FEATURES :

- Lifting of the wreckage
- Dragging of the wreckage
- Towing of the wreckage
- Two part hydraulically telescopic boom
- Separate winches for lifting & dragging actions to enable lifting & dragging of the wreckage simultaneously.
- Two nos. Outriggers for dragging operation
- Max. Road speed 40 kmph
- Capability to travel long distance on its own power - Heavy duty truck transmission
- Articulated chassis for short turning radius



## Specifications :

Crane Capacity		
	14 tonne at	1.50 m radius
	10 tonne at	2.60 m radius
	5 tonne at	5.60 m radius
Vehicle Performance		
Speed	max 40.1 kmph (unladen)	
Drive		
	4 wheel drive	
Engine		
	Diesel engine: Kirloskar (Turbocharged), developing gross HP 80.96 @ 2500 rpm	
Transmission		
	Synchromesh gearbox with auxillary gearbox Speed-4 forward and 1 reverse	
Clutch		
	Single plate dry type clutch	
Brakes		
Service Parking	Fully air operated 'S' cam dual circuit brakes on front & rear axles air operated spring actuated fail safe brakes on all wheels	
Axles		
Rear	Rigidly mounted	
Front	Mounted with two springs	
Tyres	8 nos. - 11.00x20 (16 PR)	
Hydraulic System		
	Main hydraulic pump. Control Valve-multi bank double acting with a built in relief valve. System pressure - 210 bars	
Steering		
	Full power orbitrol with twin hydraulic double acting rams 45° articulation on either side	
Boom		
	2 part boom hydraulically telescopic extension Max. boom reach - 7.5 m from rear wheel centre Boom angle: (-)5° to (+)63°	

Hosist Winch	
Hydraulically operated with multi-falls, built in hydraulically operated fail safe brakes & grooved drum	
Dragging winch	
Hydraulically operated with multi-falls, built in hydraulically operated fail safe brakes & grooved drum	
Outriggers	
2 nos. outriggers at the rear with option of mechanical/hydraulic type	
Electrical System	
24 V. negative earth Battery rating - 2x12V - 150 AH	
Dimensions	
Overall length	9.65m
Overall width	2.55m
Overall height	3.08m
Wheel Track	
Front	1830 mm
Rear	1830 mm
Wheel Base	3.9 m
Cabin	
All weather ergonomically laid out two cabins (front & rear). adjustable seats. seat belt provided in driver cabin	
Axle Loading	
Front Axle	9980 kg
Rear Axle	6315 kg
Total	16295 kg
Turning Radius	6.95 m
Standard Accessories	
Tow bar Two nos. of slings Two nos. of chains	

## A wide national network of Business Centres and Dealers

• **Ahmedabad** : (079) 40063445, 9879006280 • **Bangalore** : (080) 23398809, 9448046310 • **Bhopal** : (0755) 2551955, 9826824111  
• **Bhubaneswar** : (0674) 2588775, 9937028870 • **Chandigarh** : (0172) 5017995, 9417603041 • **Chennai** : (044) 42153707-D, 9840852996  
• **Dehradun** : (0135) 2672647, 9837755999 • **Guwahati** : (0361) 2733246, 9435342785 • **Hyderabad** : (040) 27842451, 9849992003  
• **Jaipur** : (0141) 2760904, 9929077866 • **Kanpur** : 9839211591 • **Kolkata** : (033) 24862028-D, 9830108037 • **Lucknow** : (0522) 4003683, 2371901, 9839065688 • **Mumbai** : (022) 24218150, 9821458206 • **Nagpur** : (0712) 6450713, 9822224489 • **New Delhi** : (011) 26444821, 9871598288  
• **Pune** : (020) 40089771, 9823068664 • **Ranchi** : (0651) 2531340, 9431108578 • **Visakhapatnam** : (0891) 25632345, 9866637270

## ESCORTS CONSTRUCTION EQUIPMENT LIMITED

Plot No: 2, Sector-13, Faridabad 121 007

Tel.: (0129) 2264639/2261323/2286694, Fax: (0129) 2264639/2261323

Website: www.ecel.com

• The information contained in this leaflet is intended to be of a general nature only. • We reserve the right to change specifications without notice. • All Dimensions and Weights are variable within +/- 5 %

Courtesy of Crane.Market