



## KEY FEATURES

- Cable-free hydraulic boom extension for smooth 'point and shoot' functionality
- Industry-leading unrestricted side reach and 360 degree stability
- Oversized two-person steel work platform with EZR quick connect system and platform stowed jib winch
- Electric/Hydraulic upper controls for smooth and precise operation
- Full length subframe with hydraulic outriggers for excellent stability and long chassis life



### EZR Work Platform

40" x 60" steel platform with skid-resistant aluminum floor. Removable for lifting loads with the main winch and boom tip sheave.



### Material Handling Main Winch

Elliott's 2,000 lb main winch option allows lifting loads with the work platform attached or removed, increasing lifting versatility.



### Oversized Cable Carrier

Reliably carries hydraulic, electric, welding, oxy/acetylene, air and other accessory lines to the work platform.



### Compact, Versatile Design

Engineered to be installed on a 19,500 lb GVWR truck with a narrow outrigger spread to work in tight spaces.

## OTHER FEATURES

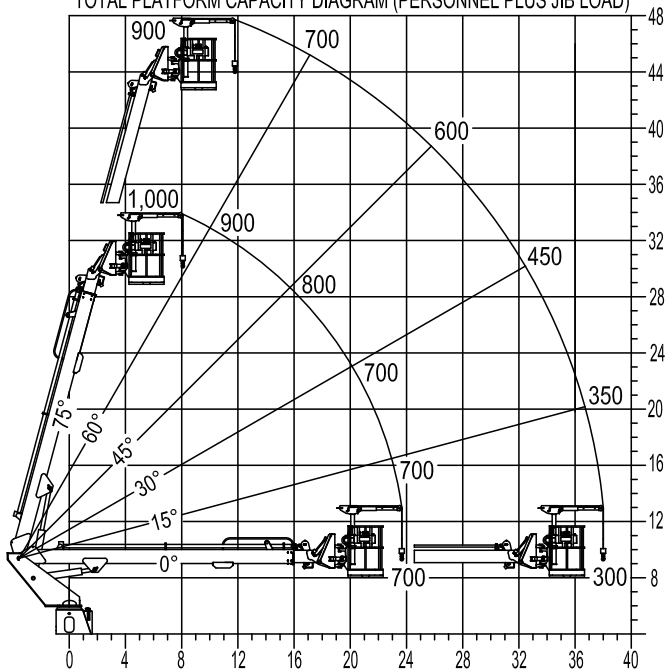
- **Stowable Platform Jib Winch:** Equip your HiReach platform with Elliott's unique jib winch that stows in the platform and features an extendable boom and mast to lengthen your reach and reduce setup times.
- **Hydraulic System:** Hydraulically powered continuous rotation mechanism. Holding valves on all cylinders. 12V Emergency pump.
- **Control System:** Manual hydraulic controls mounted on turret. Electronic proportional three-stick remote controls in work platform with hi-lo range for smooth operation in tight spaces. Includes remote engine start/stop, engine speed, and emergency stop switch.
- **Outriggers:** "A" type hydraulically powered main and behind cab outriggers.
- **Certification:** Certified to ANSI A92.2 for Vehicle-Mounted Elevating and Rotating Aerial Devices.

\*Specifications are subject to change.

## MAXIMUM WORKING LOADS PLATFORM AND JIB OPERATION

MAX PLATFORM CAPACITY: 500 LBS MAX JIB CAPACITY: 500 LBS

TOTAL PLATFORM CAPACITY DIAGRAM (PERSONNEL PLUS JIB LOAD)



USE OUTRIGGERS AT ALL TIMES · AVOID JERKING LOADS · 360° RADIUS

DO NOT PAINT OVER ANY LABELS

1219500 120516

## TECHNICAL SPECIFICATIONS

<b>Working Height</b>	48' / 14,6 m
<b>Side Reach</b>	38' / 11,6 m
<b>Platform Capacity</b>	500 lb / 227 kg
<b>Platform Size</b>	40" x 60" / 102 x 152 cm
<b>Main Winch Capacity</b>	2,000 lb / 907 kg
<b>Jib Winch Capacity</b>	500 lb / 227 kg
<b>Front Outrigger Spread</b>	10'1" / 3,1 m
<b>Rear Outrigger Spread</b>	10'1" / 3,1 m
<b>Minimum GVWR</b>	19,500 lb / 8845 kg

## AVAILABLE OPTIONS

- 500 lb. Capacity Stowable Jib Winch in the Work Platform
- 2,000 lb. Capacity Material Handling Main Winch
- 110V Lines, Welding Leads, Oxy/Acetylene Leads, Air Lines, Water Lines and More to the Work Platform
- (2) Sign Forks on the Work Platform
- Walkway Access to the Work Platform with the Boom Stowed
- Steel, Wood, or Aluminum Flatbeds
- Various Rear Bumper Styles
- Steel or Aluminum Toolboxes
- Composite or Wooden Outrigger Pads
- Spanish/Metric Charts
- Paint White, Red or Custom Colors
- Much More...

**QUESTIONS? CONTACT US.**

**402-592-4500 | sales@elliotequip.com**