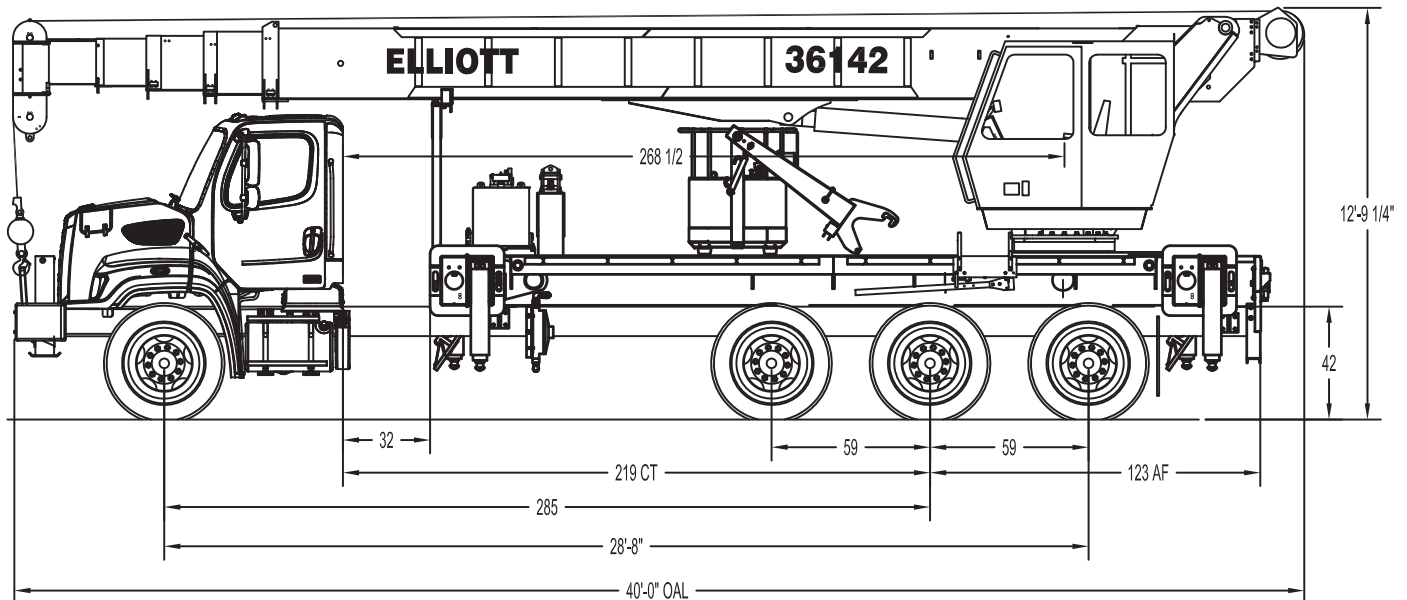




### 36142 SIDE VIEW DIAGRAM



- **Maximum Vertical Reach** 201'61,3 m
- **Working Area** 360 Degrees
- **Lifting Capacity** 72,000 lbs/32 659 kg
- **Boom Length** 142'43,3 m
- **Crane Weight (Standard)** 35,210 lbs/15 971 kg
- **Jib Lengths** 32'-49'/10-15 m
- **Winch Bare Drum Pull** 12,800 lbs/5806 kg

- **Powered Boom Sections** 5
- **Overall Height** 12'10"/3,9 m
- **Operator Controls (Standard)** Rotating Standup
- **Outrigger Type Front** Out-Down
- **Outrigger Spread Front** 21'2"/6,4 m
- **Outrigger Type Rear** Out-Down
- **Outrigger Spread Rear** 21'2"/6,4 m

## TECHNICAL SPECIFICATIONS

**Crane Capacity:** 72,000 lbs at 5' load radius.

**Maximum Tip Height:** 152' height (201' with optional 32'-49' jib)

**Control Console:** Rotating turret single operator standup control station equipped with four single axis control levers for the main crane controls. Operator station includes LMI display, bubble level gauge, engine start/stop switch, signal horn button, variable speed throttle switch, lifting capacity chart, range diagram chart, boom angle indicator, system pressure gauge, 12V DC power source, and cup holder. Independent ground level electric operated outrigger controls.

**Boom:** Five-section fully proportional, high strength steel plated rectangular tube sections. A maximum boom tip height of 152' mounted on a truck. The boom nose contains one floating upper sheave and three lower sheaves. Assembly includes heavy-duty cylinder fittings, pivot pins, and replaceable wear pads.

**Winch:** Mounted at the base of the boom for a long fleet angle and flat level spooling of cable. Winch is driven by a planetary reducer and powered by a hydraulic motor. Burst-of-speed winch provides increased line speed. The winch brake is spring applied, pressure release design. Supplied with 425' of 9/16" diameter rotation resistant wire rope with a single line pull of 9,060 pounds, and a downhaul ball with swivel hook for single part line.

**Load Moment Indicator System:** System senses hoist cylinder pressures, boom length and boom angle with hydraulic function lockout. The display console is equipped with a bar graph showing crane utilization, boom angle or boom length, a mode select controls for main boom and jib operation, and an anti-two block with an audio/visual warning and shut-off functions to limit

hook-boom point contact.

**Outriggers:** Two sets of out and down overframe outriggers with 21'2" span. Outriggers are configured for full span or mid span operation. Outriggers equipped with ball socket aluminum removable pads that stow on vertical outrigger legs. Single front bumper stabilizer.

**Frame:** Full length, all welded rigid 4-plate design sub-frame. Sub-frame allows for bolt-on addition of 20' aluminum bed wings, with top plate of subbase serving as a portion of the bed deck, to form a three-piece bed.

**Turret:** Reverse offset turret is one-piece weldment. Turret rotates on large diameter ball bearing.

**Rotation:** Hydraulic motor drives turret through double reduction planetary swing drive for continuous rotation. The swing drive system has a spring applied, pressure release brake.

**Lift:** One double-acting long stroke cylinder provides smooth and stable boom elevation. Holding valve prevents boom from falling in event of hose failure.

**Boom Extension:** Incorporates a 2-stage hydraulic extension cylinder, attached to the largest boom section, with a proportional cable extension system driving the outermost sections.

**Hoses:** All high pressure hoses are wire braid reinforced with a minimum safety factor of 4 to 1.

**Cylinders:** All cylinders use microhoned cylinder tubing, chrome shafts, top grade packing and protective rod wipers. Cylinder-mounted holding valves provided on all load-holding cylinders.

**Hydraulic System:** Equipped with air-shift or hot shift PTO, piston pump, SAE O-ring face seals on pressure lines, and a 10-micron return line filter. The control valve distributes all flow to hoist

system, swing circuit, and other crane functions. System is closed center type.

**Oil Tank Capacity:** 119 gallon aluminum reservoir mounted on outrigger or truck frame.

**Cab Equipment:** PTO with indicator lights installed in truck cab. U/L approved 5:BC dry chemical fire extinguisher installed in truck cab.

**Operators Manual & Video:** Two CD copies and one hard copy of operation, maintenance, safety and parts manual provided with each unit. Operational and safety video provided at delivery.

**Installation:** Unit installed on chassis, painted, system and tank filled with oil, tested, inspected, and ready to operate.

**Standard Paint:** Paint turret and boom white, outriggers red, and boxes black.

**Bumper:** Bureau of Motor Carrier Safety rear bumper.

**Weight:** Approximately 35,210 lbs. with 20' bed wings less truck.

**Truck Chassis Required:** Approx. 219" C.T., 3,200,000 in-lb RBM frame rails, 20,000 lb. front axle and 78,000 lb. GVWR recommended. Truck must have a front frame extension, 12V electrical system with high capacity alternator, cab clearance stop/tail/backup lights, and I.D. lamps. Contact factory when additional equipment is to be added.

#### Options:

Enclosed Operator Cab with Heater  
Open Seated Rotating Control Station  
32' to 49' Two-Piece Telescopic Jib  
Radio Remote Controls  
Gravity-Leveled Steel Basket  
Line Blocks for Multi-Part Line  
Hydraulic Oil Cooler  
Toolbox Storage Options  
Much more....

Elliott Equipment Company reserves the right to change the specification of any unit at any time without prior notice. This brochure is only a statement of general specifications on the date of this publication. For more detailed info on specific Elliott trucks go to [www.elliottequip.com](http://www.elliottequip.com)

## LOAD CHART - MAIN BOOM, FULL-SPAN OUTRIGGERS



## MODEL 3600 142-ft BOOM

LOAD RATINGS WITH FULLY EXTENDED OUTRIGGERS

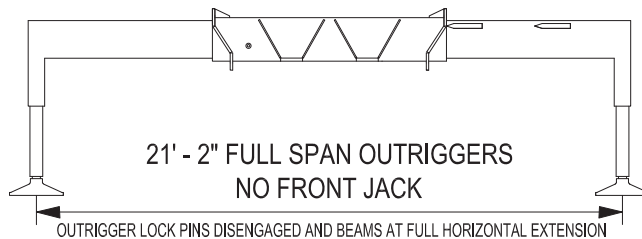
## MAIN BOOM LOAD RATINGS (LBS)

| LOAD RADIUS IN FEET | LOADED BOOM ANGLE | 35-FT  | 47-FT | 61-FT  | 74-FT | 88-FT  | 101-FT | 115-FT | 128-FT | 142-FT |
|---------------------|-------------------|--------|-------|--------|-------|--------|--------|--------|--------|--------|
| 5                   | 71.7              | 72,000 |       |        |       |        |        |        |        |        |
| 8                   | 68.2              | 48,000 |       |        |       |        |        |        |        |        |
| 10                  | 64.6              | 41,000 | 71.4  | 40,000 |       |        |        |        |        |        |
| 12                  | 60.9              | 35,900 | 68.8  | 34,000 | 73.8  | 30,000 |        |        |        |        |
| 15                  | 55.2              | 28,000 | 64.8  | 26,500 | 70.9  | 24,500 | 74.3   | 24,000 |        |        |
| 20                  | 44.4              | 20,000 | 57.9  | 20,000 | 65.8  | 20,000 | 70.3   | 17,500 | 73.5   | 17,000 |
| 25                  | 31.0              | 15,000 | 50.3  | 15,500 | 60.5  | 15,500 | 66.1   | 15,000 | 70.1   | 14,500 |
| 30                  |                   |        | 41.9  | 12,000 | 55.0  | 12,000 | 61.8   | 12,400 | 66.6   | 12,400 |
| 35                  |                   |        | 31.7  | 9,400  | 49.0  | 9,700  | 57.3   | 10,200 | 63.0   | 10,200 |
| 40                  |                   |        | 16.8  | 7,200  | 42.5  | 8,000  | 52.5   | 8,400  | 59.2   | 8,400  |
| 45                  |                   |        |       |        | 34.9  | 6,500  | 47.5   | 6,800  | 55.4   | 6,800  |
| 50                  |                   |        |       |        | 25.6  | 5,100  | 42.0   | 5,500  | 51.3   | 5,500  |
| 55                  |                   |        |       |        | 10.4  | 4,400  | 35.8   | 4,500  | 47.0   | 4,600  |
| 60                  |                   |        |       |        |       |        | 28.6   | 3,600  | 42.4   | 3,700  |
| 65                  |                   |        |       |        |       |        | 18.9   | 2,800  | 37.3   | 3,000  |
| 70                  |                   |        |       |        |       |        |        | 31.5   | 2,200  | 42.0   |
| 75                  |                   |        |       |        |       |        |        | 24.6   | 1,500  | 37.6   |
| 80                  |                   |        |       |        |       |        |        | 15.0   | 800    | 32.7   |
| 85                  |                   |        |       |        |       |        |        |        | 27.0   | 800    |
| 90                  |                   |        |       |        |       |        |        |        |        | 38.5   |
| 95                  |                   |        |       |        |       |        |        |        |        |        |
| 0                   |                   | 11,500 | 0     | 6,500  | 0     | 4,000  | 0      | 1,300  |        |        |
|                     |                   | 900    |       | 650    |       | 500    |        | 400    |        | 350    |
|                     |                   |        |       |        |       |        |        | 300    |        | 250    |
|                     |                   |        |       |        |       |        |        |        | 250    | 200    |

## JIB LOAD RATINGS

| (LBS)                   |                   |                     |
|-------------------------|-------------------|---------------------|
| 32-49 FT EXTENDABLE JIB |                   |                     |
| LOAD RADIUS (FT)        | LOADED BOOM ANGLE | 32 FT JIB RETRACTED |
| 33                      | 80.0              | 3,400               |
| 44                      | 75.0              | 3,200               |
| 58                      | 70.0              | 2,700               |
| 70                      | 65.0              | 1,500               |
| 80                      | 62.0              | 1,000               |
| 49-FT JIB EXTENDED      |                   |                     |
| LOAD RADIUS (FT)        | LOADED BOOM ANGLE |                     |
| 35                      | 80.0              | 2,200               |
| 50                      | 75.0              | 2,200               |
| 70                      | 70.0              | 1,600               |
| 80                      | 65.0              | 1,000               |

DEDUCTIONS FOR STOWED EXTENDABLE JIB (LBS)



ELLIOTT EQUIPMENT CO. SUPPLIED  
LOADLINE EQUIPMENT DEDUCTIONS:  
 DOWNHAUL WEIGHT .....180 LBS  
 ONE SHEAVE BLOCK.....236 LBS  
 TWO SHEAVE BLOCK.....291 LBS  
 THREE SHEAVE BLOCK.....639 LBS  
 FOUR SHEAVE BLOCK.....762 LBS  
 AUXILIARY SHEAVE.....100 LBS

| 1-PART LINE  | 2-PART LINE | 3-PART LINE | 4-PART LINE | 5-PART LINE | 6-PART LINE | 7-PART LINE | 8-PART LINE | NOTICE  |
|--|-------------|-------------|-------------|-------------|-------------|-------------|-------------|---|
|  |             |             |             |             |             |             |             | <ul style="list-style-type: none"> <li>DO NOT DEADHEAD LINE BLOCK AGAINST BOOM TIP WHEN EXTENDING BOOM.</li> <li>KEEP AT LEAST 5 WRAPS OF LOADLINE ON THE WINCH DRUM AT ALL TIMES.</li> <li>USE ONLY 9/16\" DIAMETER WIRE ROPE, AS SPECIFIED BELOW, WITH THE PROPER BREAKING STRENGTHS LISTED.</li> <li>ANTI-TWO-BLOCK SYSTEM MUST BE IN GOOD OPERATING CONDITION BEFORE OPERATING CRANE. SEE OPERATION &amp; SAFETY MANUAL.</li> </ul> |
| MAX PULL: 9,600 lbs  | 19,200 lbs  | 28,800 lbs  | 38,400 lbs  | 48,000 lbs  | 57,600 lbs  | 67,200 lbs  | 72,000 lbs  | 9/16\" - 6 x 37 IWRC (3.5:1 S.F.) 33,600-lbs. BREAKING STRENGTH   |
| MAX PULL: 9,060 lbs  | 18,120 lbs  | 27,180 lbs  | 36,240 lbs  | 45,300 lbs  | 54,360 lbs  | 63,420 lbs  | 72,000 lbs  | 9/16\" - SPIN RESISTANT (5:1 S.F.) 45,300-lbs. BREAKING STRENGTH  |
| CRANE MEETS ASME B30.5 REQUIREMENTS AT TIME OF MANUFACTURE |             |             |             |             |             |             |             | 1214820 072216  |

## LOAD CHART - MAIN BOOM, MID-SPAN OUTRIGGERS



# MODEL 3600 142-FT BOOM

LOAD RATINGS WITH OUTRIGGERS AT MID-SPAN POSITION

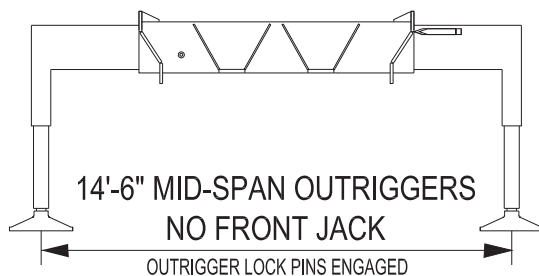
## MAIN BOOM LOAD RATINGS (LBS)

| LOAD RADIUS IN FEET | LOADED BOOM ANGLE | 35-FT  | 47-FT | 61-FT  | 74-FT | 88-FT  | 101-FT | 115-FT | 128-FT | 142-FT |
|---------------------|-------------------|--------|-------|--------|-------|--------|--------|--------|--------|--------|
| 5                   | 71.7              | 72,000 |       |        |       |        |        |        |        |        |
| 8                   | 68.2              | 48,000 |       |        |       |        |        |        |        |        |
| 10                  | 64.6              | 41,000 | 71.4  | 40,000 |       |        |        |        |        |        |
| 12                  | 60.9              | 35,900 | 68.8  | 34,000 | 73.8  | 30,000 |        |        |        |        |
| 15                  | 55.2              | 28,000 | 64.8  | 26,500 | 70.9  | 24,500 | 74.3   | 24,000 |        |        |
| 20                  | 44.4              | 18,000 | 57.9  | 18,800 | 65.8  | 19,000 | 70.3   | 17,500 | 73.5   | 17,000 |
| 25                  | 31.0              | 11,000 | 50.3  | 11,800 | 60.5  | 12,000 | 66.1   | 12,300 | 70.1   | 12,500 |
| 30                  |                   |        | 41.9  | 7,800  | 55.0  | 8,100  | 61.8   | 8,400  | 66.6   | 8,600  |
| 35                  |                   |        | 31.7  | 5,200  | 49.0  | 5,600  | 57.3   | 5,800  | 63.0   | 6,000  |
| 40                  |                   |        | 16.8  | 3,500  | 42.5  | 3,800  | 52.5   | 4,000  | 59.2   | 4,200  |
| 45                  |                   |        |       |        | 34.9  | 2,500  | 47.5   | 2,700  | 55.4   | 2,800  |
| 50                  |                   |        |       |        | 25.6  | 1,500  | 42.0   | 1,700  | 51.3   | 1,800  |
| 55                  |                   |        |       |        | 10.4  | 700    | 35.8   | 900    | 47.0   | 1,000  |
| 60                  |                   |        |       |        |       |        |        |        | 49.9   | 600    |
| 65                  |                   |        |       |        |       |        |        |        |        | 55.6   |
| 70                  |                   |        |       |        |       |        |        |        |        | 600    |
| 75                  |                   |        |       |        |       |        |        |        |        | 59.5   |
| 80                  |                   |        |       |        |       |        |        |        |        | 700    |
| 85                  |                   |        |       |        |       |        |        |        |        | 62.8   |
| 90                  |                   |        |       |        |       |        |        |        |        | 700    |
| 95                  |                   |        |       |        |       |        |        |        |        |        |
| 0                   |                   | 7,100  | 0     | 3,000  | 0     | 600    | 0      |        |        |        |
|                     |                   | 900    |       | 650    |       | 500    |        | 400    |        | 350    |
|                     |                   |        |       |        |       |        |        | 300    |        | 250    |
|                     |                   |        |       |        |       |        |        |        | 250    | 200    |

## JIB LOAD RATINGS

| (LBS)                   |                   |                     |
|-------------------------|-------------------|---------------------|
| 32-49 FT EXTENDABLE JIB |                   |                     |
| LOAD RADIUS (FT)        | LOADED BOOM ANGLE | 32 FT JIB RETRACTED |
| 33                      | 80.0              | 3,400               |
| 44                      | 75.0              | 3,200               |
| 49-FT JIB EXTENDED      |                   |                     |
| LOAD RADIUS (FT)        | LOADED BOOM ANGLE | 49-FT JIB EXTENDED  |
| 35                      | 80.0              | 2,200               |
| 50                      | 75.0              | 2,200               |

DEDUCTIONS FOR STOWED EXTENDABLE JIB (LBS)



ELLIOTT EQUIPMENT CO. SUPPLIED  
LOADLINE EQUIPMENT DEDUCTIONS:

DOWNHAUL WEIGHT .....180 LBS  
ONE SHEAVE BLOCK.....236 LBS  
TWO SHEAVE BLOCK.....291 LBS  
THREE SHEAVE BLOCK.....639 LBS  
FOUR SHEAVE BLOCK.....762 LBS  
AUXILIARY SHEAVE.....100 LBS

| 1-PART LINE         | 2-PART LINE | 3-PART LINE | 4-PART LINE | 5-PART LINE | 6-PART LINE | 7-PART LINE | 8-PART LINE | NOTICE   |
|---------------------|-------------|-------------|-------------|-------------|-------------|-------------|-------------|--|
|                     |             |             |             |             |             |             |             | <ul style="list-style-type: none"> <li>DO NOT DEADHEAD LINE BLOCK AGAINST BOOM TIP WHEN EXTENDING BOOM.</li> <li>KEEP AT LEAST 5 WRAPS OF LOADLINE ON THE WINCH DRUM AT ALL TIMES.</li> <li>USE ONLY 9/16" DIAMETER WIRE ROPE, AS SPECIFIED BELOW, WITH THE PROPER BREAKING STRENGTHS LISTED.</li> <li>ANTI-TWO-BLOCK SYSTEM MUST BE IN GOOD OPERATING CONDITION BEFORE OPERATING CRANE. SEE OPERATION &amp; SAFETY MANUAL.</li> </ul> |
| MAX PULL: 9,600 lbs | 19,200 lbs  | 28,800 lbs  | 38,400 lbs  | 48,000 lbs  | 57,600 lbs  | 67,200 lbs  | 72,000 lbs  | 9/16" - 6 x 37 IWRC (3.5:1 S.F.)<br>33,600-lbs. BREAKING STRENGTH  |
| MAX PULL: 9,060 lbs | 18,120 lbs  | 27,180 lbs  | 36,240 lbs  | 45,300 lbs  | 54,360 lbs  | 63,420 lbs  | 72,000 lbs  | 9/16" - SPIN RESISTANT (5:1 S.F.)<br>45,300-lbs. BREAKING STRENGTH   |

CRANE MEETS ASME B30.5 REQUIREMENTS AT TIME OF MANUFACTURE

1214820 072216

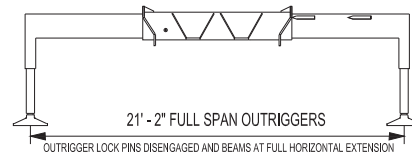
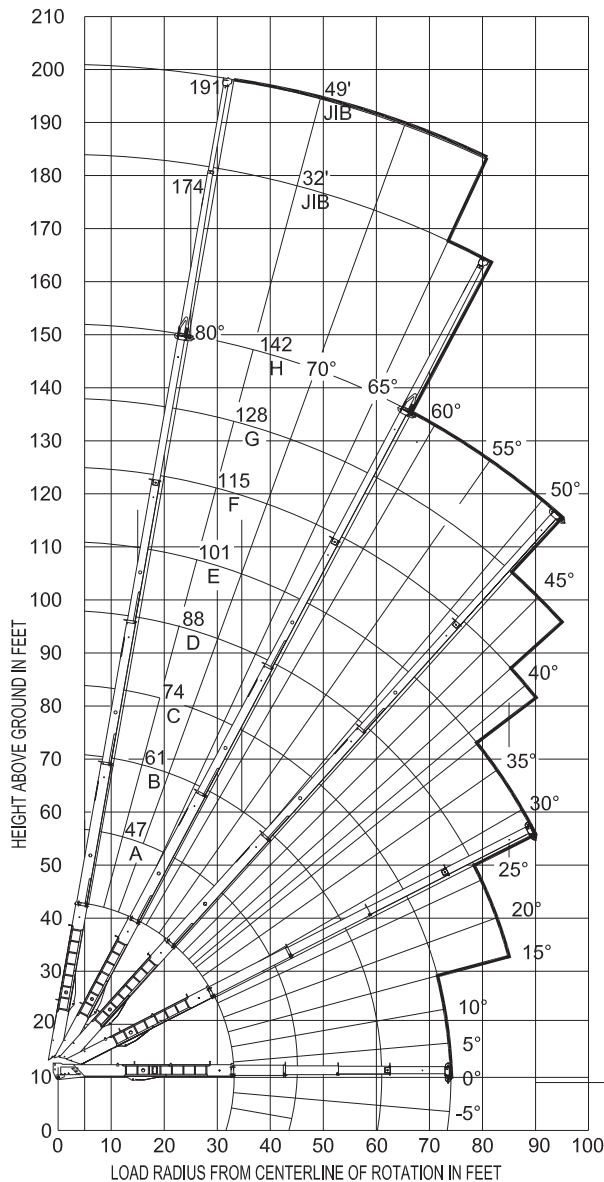
## RANGE CHART - MAIN BOOM + JIB, FULL-SPAN OUTRIGGERS

**ELLIOTT**  
EQUIPMENT COMPANY

MODEL 3600

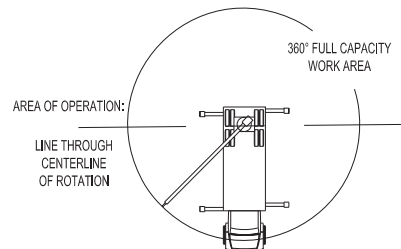
142-FT BOOM

### RANGE DIAGRAM WITH FULL SPAN OUTRIGGERS



#### NOTE:

1. Operate jib by radius when main boom is fully extended. Increase boom angle if necessary to maintain load radius.
2. When boom is retracted, operate jib by boom angles. Do not exceed any rated jib capacities at reduced boom lengths.
3. Capacities do not exceed 85% stability.
4. Load ratings above bold line are structurally limited.
5. Personnel handling is allowed only with full span outriggers.
6. Boom load ratings are based on loaded boom radius. Loaded boom angles are given as reference only.



STABILITY LIMIT LINE  
(NO LOAD)

BOOM DEFLECTION NOT SHOWN

CRANE MEETS ASME B30.5 REQUIREMENTS AT TIME OF MANUFACTURE

1214820 072216

**ELLIOTT**  
EQUIPMENT COMPANY

Elliott Equipment Company  
4427 South 76th Circle  
Omaha, NE 68127

Phone: 402-592-4500  
Fax: 402-592-4553  
Email: sales@elliottequip.com

**Built for You.**  
www.elliottequip.com

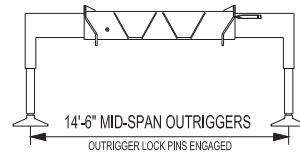
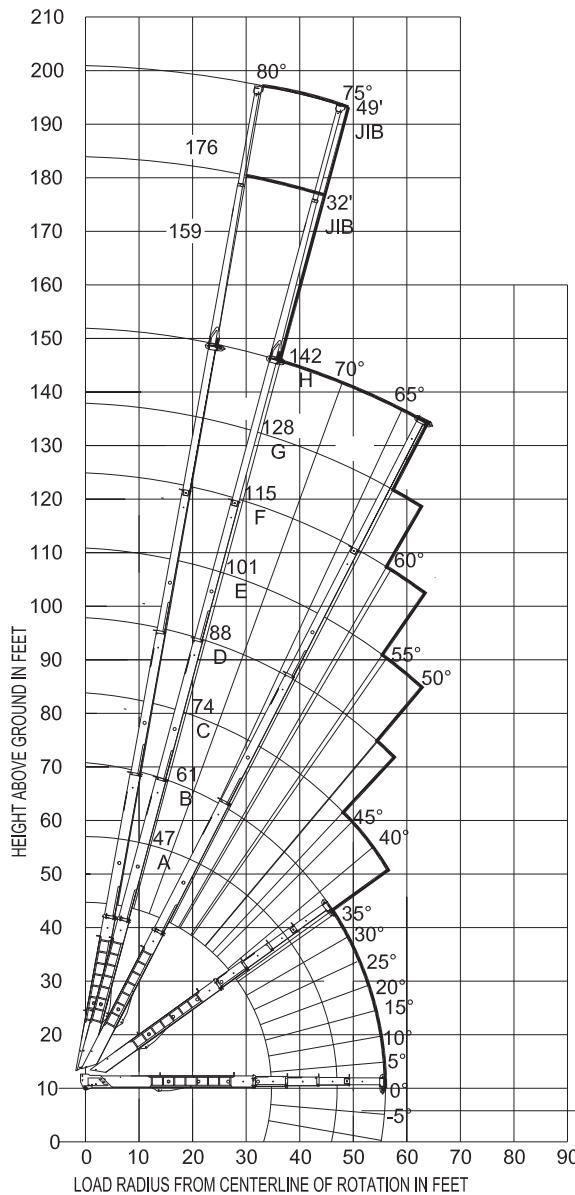


## RANGE CHART - MAIN BOOM + JIB, MID-SPAN OUTRIGGERS

**ELLIOTT**  
EQUIPMENT COMPANY

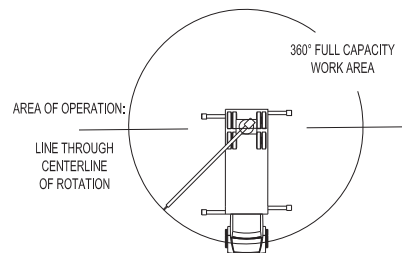
MODEL 3600 142-FT BOOM

RANGE DIAGRAM WITH OUTRIGGERS IN MID-SPAN POSITION



**NOTE:**

1. Operate jib by radius when main boom is fully extended. Increase boom angle if necessary to maintain load radius.
2. When boom is retracted, operate jib by boom angles. Do not exceed any rated jib capacities at reduced boom lengths.
3. Capacities do not exceed 85% stability.
4. Load ratings above bold line are structurally limited.
5. Personnel handling is allowed only with full span outriggers.
6. Boom load ratings are based on loaded boom radius. Loaded boom angles are given as reference only.



CRANE MEETS ASME B30.5 REQUIREMENTS AT TIME OF MANUFACTURE

1214820 072216

**ELLIOTT**  
EQUIPMENT COMPANY

Elliott Equipment Company  
4427 South 76th Circle  
Omaha, NE 68127  
Phone: 402-592-4500  
Fax: 402-592-4553  
Email: sales@elliottequip.com

**Built for You.**  
www.elliottequip.com

## RECOMMENDED CHASSIS SPECIFICATIONS

|                                | 36142 BoomTruck  |
|--------------------------------|--|
| Wheelbase (WB)                 | 285" / 724 cm  |
| Cab to Axle (CA)               | 219" / 556 cm  |
| Cab to End of Frame (EOF)      | 344" / 874 cm  |
| Frame Section Modulus          | 30.0 in <sup>3</sup> -110,000 psi / 492 cm <sup>3</sup> -758 MPa |
| Front Axle Gross Weight Rating | 20,000 lb / 9072 kg  |
| Rear Axle Gross Weight Rating  | 58,000 lb / 26 308 kg  |
| Integral Front Frame Rails     | Required for Front Stabilizer                                    |

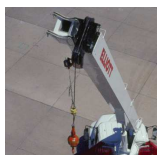
Chassis data shows minimum general requirements-not for engineering.  
Actual dimensions and truck data will depend on truck selection and axle configuration.  
\*Minimum chassis weights are required to meet 85% stability requirements.

## OPTIONS



### Radio Remote Control

Interference protected radio remotes let you get closer to your work and have full control over your machine. Includes battery charging feature and optional LMI screen.



### Pin-On Jib Attachments

Two-piece telescoping jib with material handling and basket attachment capabilities. Stows on the side of the boom for transport to the jobsite.



### Hydraulic Oil Cooler

Add a hydraulic oil cooler to assist with high duty cycle job applications. Cooler activates automatically if the hydraulic oil temperature reaches a critical level.



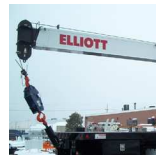
### Automatic Safety Rotation Lockout

"Short-jack" your BoomTruck by adding an automatic safety lockout to prevent boom movement over the side where outriggers are not fully extended.



### Operator Cab

The enclosed steel operator cab includes an adjustable seat, windshield wipers, diesel heater, fan, and optional air conditioning.



### Hook Block for Multi-Part Line

Choose from a range of available hook blocks for working with up to 8 parts of line. The block can be stored towards the front of the bed.



### 2-Man Yoke Work Platform

Elliott's 600 lb capacity 2-man platform features a hydraulic yoke lifting system for easy attachment to the boom or jib tip. Fully OSHA compliant and heavy duty.



### Body Mounted Hose Reels and Circuits

Let us work with you to customize your tool compatability by adding hose reels or hydraulic circuits to the crane bed.