



### Standard

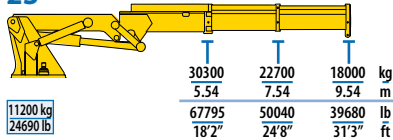
- Hexagonal hook
- F.P.I. (Fulcrum Point Indicator)
- Hydraulic system
- Control panel
- Hydraulic pump
- Hydraulic cylinder

2100

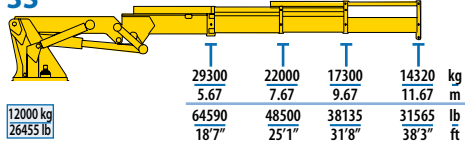
### Optional

- JIB
- MAN (Manufacturer's name)
- Additional hydraulic components

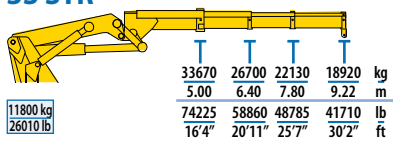
## 2S



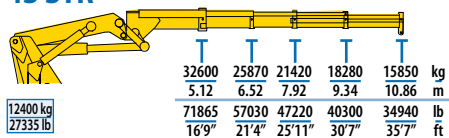
## 3S



## 3S STR\*



## 4S STR\*



MODEL							GVW
	txm	(°)	mm	mm	mm	mm	t
2S	171,72	∞	2260	2550	3450	8370 11670	40
3S	168,74	∞	2260	2550	3530	8370 11670	40
3S STR	174,44	∞	2260	2550	6100	8370 11670	40
4S STR	172,13	∞	2260	2550	6200	8370 11670	40

MODEL							GVW
	lb*ft	(°)	in	in	in	in	lb
2S	1242480	∞	89	100	136	330 459	88200
3S	1220920	∞	89	100	139	330 459	88200
3S STR	1262160	∞	89	100	240	330 459	88200
4S STR	1245440	∞	89	100	244	330 459	88200