

E-Crane[®] Capacity Charts

3000 Series

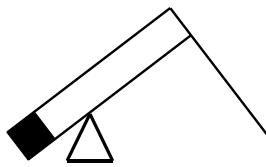
Model 26317

Model 23359

Model 30382

Model 27450





E-Crane[®] Capacity Charts
3000 Series
Model 27450

CONTENTS

DUTY CYCLE OPERATION	3
Load Chart (USton/ft)	3
Load Chart (Mton/m)	5
LIFT CRANE OPERATION	7
Load Chart (USton/ft)	7
Load Chart (Mton/m)	9
SPECIFICATIONS	11

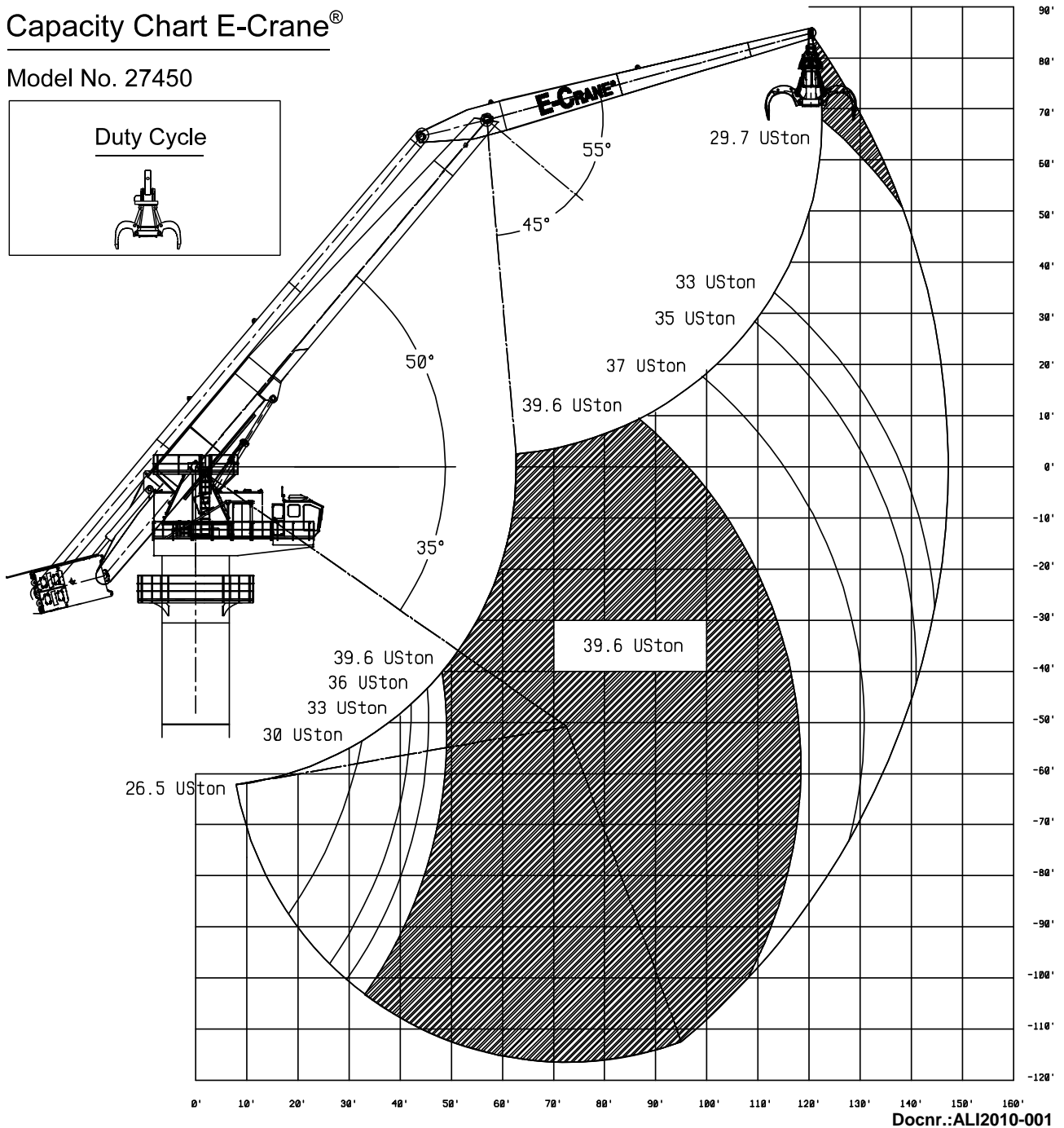
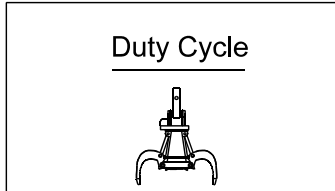


DUTY CYCLE OPERATION

Load Chart (USton/ft)

Capacity Chart E-Crane®

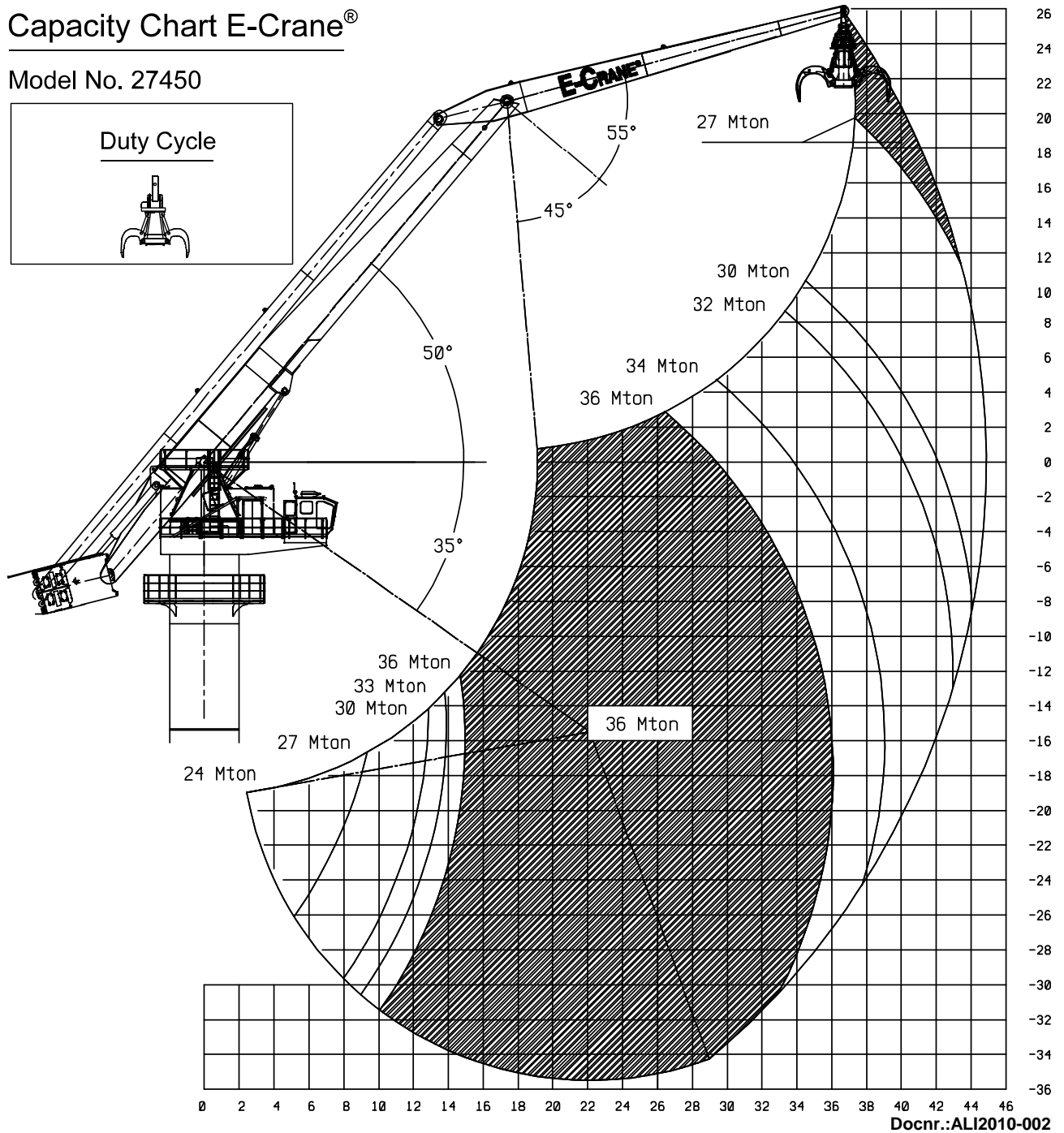
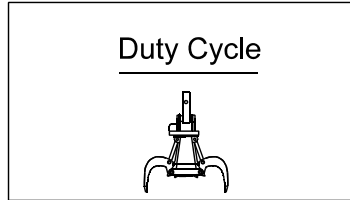
Model No. 27450



Load Chart (Mton/m)

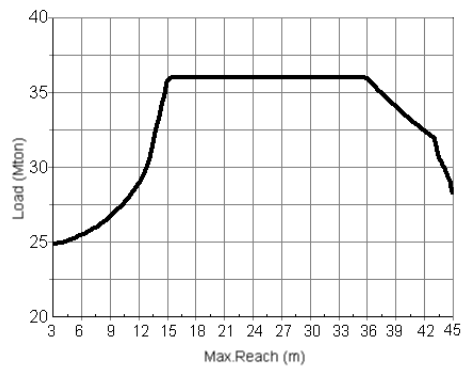
Capacity Chart E-Crane®

Model No. 27450





HEIGHT Relative to BOOM- PIN (m)	CAPACITY CHART (Mton) / Duty Cycle Operation																					
	E-crane 27450																					
	REACH (m)																					
	3	5	7	9	11	13	15	17	19	21	23	25	27	29	31	33	35	37	39	41	43	45
22																						27,00
20																						27,00
18																						27,07 27,00
16																						27,71 27,34 27,04
14																						28,11 27,78 27,27
12																						28,66 28,11 27,71 27,15
10																						29,94 29,23 28,66 28,02 27,51
8																						32,19 30,79 29,94 29,23 28,42 27,86
6																						32,77 32,30 30,79 29,94 28,93 28,21
4																						34,56 33,89 33,30 32,65 32,19 30,56 29,57 28,54
2																						36,00 36,00 35,30 34,56 33,89 33,16 32,53 31,98 30,13 29,08
0																						36,00 36,00 36,00 36,00 36,00 35,90 35,10 34,22 33,44 32,65 32,09 29,94
-2																						36,00 36,00 36,00 36,00 36,00 36,00 36,00 35,70 34,73 33,74 33,03 32,30 30,34
-4																						36,00 36,00 36,00 36,00 36,00 36,00 36,00 36,00 36,00 35,10 34,22 33,30 32,53 30,79
-6																						36,00 36,00 36,00 36,00 36,00 36,00 36,00 36,00 36,00 35,49 34,56 33,59 32,77 31,45
-8																						36,00 36,00 36,00 36,00 36,00 36,00 36,00 36,00 36,00 36,00 36,00 35,90 34,73 33,74 32,90 31,98
-10																						36,00 36,00 36,00 36,00 36,00 36,00 36,00 36,00 36,00 36,00 36,00 36,00 35,10 34,05 33,03 32,09
-12																						36,00 36,00 36,00 36,00 36,00 36,00 36,00 36,00 36,00 36,00 36,00 36,00 36,00 36,00 35,30 34,05 33,03
-14																						35,73 36,00 36,00 36,00 36,00 36,00 36,00 36,00 36,00 36,00 36,00 36,00 36,00 35,30 34,22 33,03
-16																						27,87 29,99 35,73 36,00 36,00 36,00 36,00 36,00 36,00 36,00 36,00 36,00 36,00 36,00 36,00 36,00 35,30 34,22 33,03
-18																						25,81 26,75 28,32 30,64 35,73 36,00 36,00 36,00 36,00 36,00 36,00 36,00 36,00 36,00 36,00 36,00 36,00 35,30 34,05 32,90
-20																						24,97 25,41 26,17 27,27 28,57 31,30 36,00 36,00 36,00 36,00 36,00 36,00 36,00 36,00 36,00 36,00 36,00 36,00 35,30 33,89
-22																						25,81 26,59 27,66 29,10 32,68 36,00 36,00 36,00 36,00 36,00 36,00 36,00 36,00 36,00 36,00 36,00 36,00 36,00 35,10 33,74
-24																						26,17 27,09 28,32 29,99 33,40 36,00 36,00 36,00 36,00 36,00 36,00 36,00 36,00 36,00 36,00 36,00 36,00 36,00 34,73
-26																						27,66 29,10 31,30 35,73 36,00 36,00 36,00 36,00 36,00 36,00 36,00 36,00 36,00 36,00 36,00 36,00 36,00 35,90
-28																						28,57 29,99 33,40 36,00 36,00 36,00 36,00 36,00 36,00 36,00 36,00 36,00 36,00 36,00 36,00 36,00 36,00 35,30
-30																						31,98 35,73 36,00 36,00 36,00 36,00 36,00 36,00 36,00 36,00 36,00 36,00 36,00 36,00
-32																						36,00 36,00 36,00 36,00 36,00 36,00 36,00 36,00 36,00 36,00 36,00
-34																						36,00 36,00 36,00 36,00 36,00 36,00 36,00 36,00 36,00

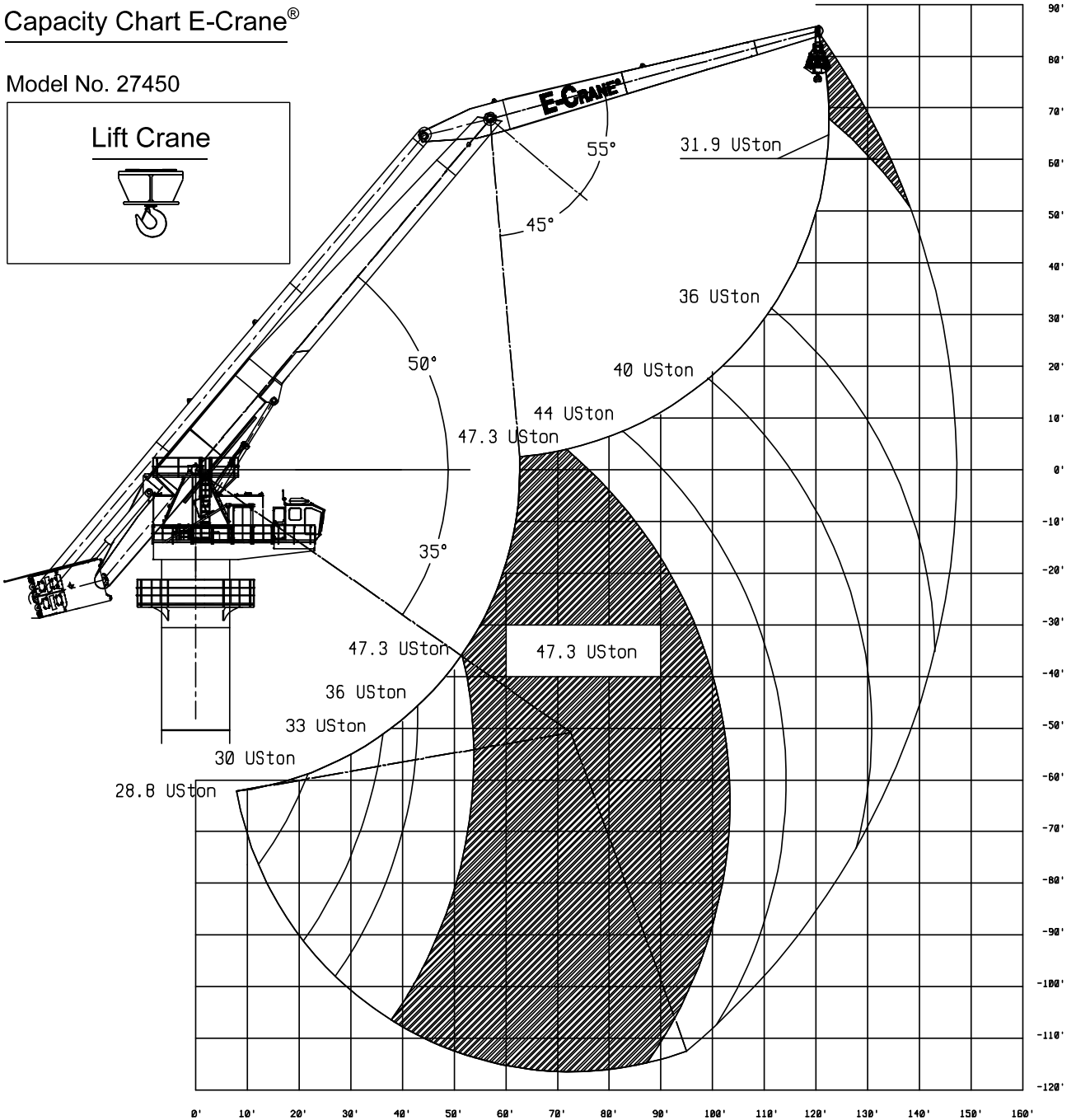
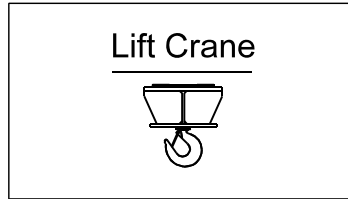


LIFT CRANE OPERATION

Load Chart (USton/ft)

Capacity Chart E-Crane®

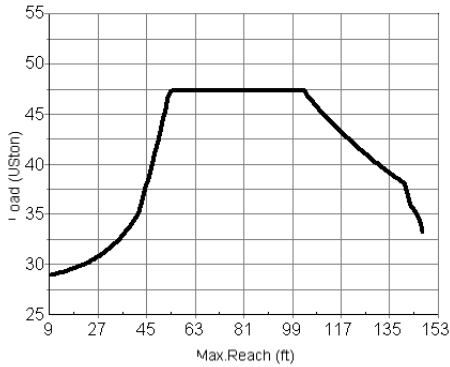
Model No. 27450



Docnr.:ALI2010-003



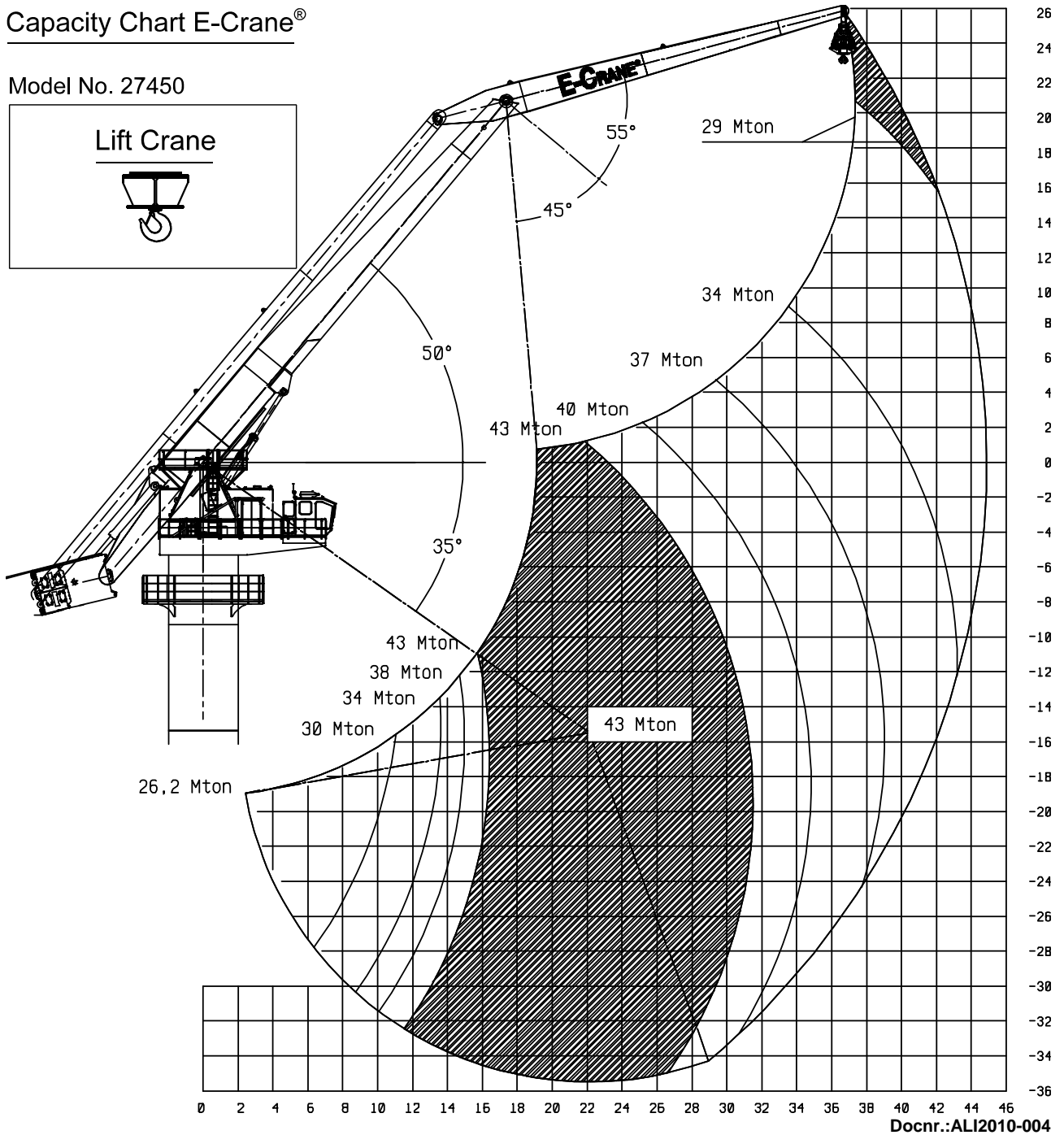
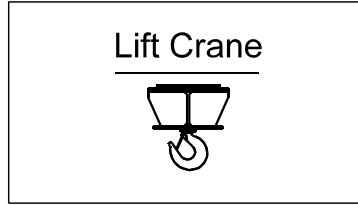
HEIGHT Relative to BOOM- PIN (ft)	CAPACITY CHART (USton) / Lift Crane Operation																									
	E-crane 27450																									
	REACH (ft)																									
	9	15	21	27	33	39	45	51	57	63	69	75	81	87	93	99	105	111	117	123	129	135	141	147		
78																									31,96	
72																										31,96
66																										31,97 31,96
60																										32,07 31,97
54																										32,32 32,11 31,97
48																										32,64 32,32 32,07
42																										33,20 32,64 32,26 32,01
36																										34,33 33,79 33,08 32,55 32,15
30																										36,23 35,19 34,53 33,63 32,96 32,39
24																										38,30 36,23 35,19 34,33 33,48 32,74
18																										39,33 38,86 38,30 36,23 34,96 33,96 33,08
12																										41,45 40,81 40,03 39,33 38,71 38,16 35,95 34,53 33,63
6																										44,59 43,43 42,39 41,67 40,81 40,03 39,33 38,57 37,88 35,19 33,96 32,96
0																										47,30 47,30 47,30 45,88 44,59 43,43 42,39 41,45 40,60 39,85 39,01 38,30 35,95 34,53 33,34
-6																										47,30 47,30 47,30 47,30 45,88 44,59 43,43 42,14 41,23 40,21 39,50 38,71 37,04 34,96 33,63
-12																										47,30 47,30 47,30 47,30 47,30 45,54 44,29 42,90 41,90 40,81 39,85 39,01 38,30 35,43
-18																										47,30 47,30 47,30 47,30 47,30 46,57 44,90 43,71 42,39 41,23 40,21 39,33 38,43 35,95
-24																										47,30 47,30 47,30 47,30 47,30 47,30 45,88 44,29 42,90 41,67 40,60 39,67 38,71 36,23
-30																										47,30 47,30 47,30 47,30 47,30 47,30 47,30 46,57 44,90 43,43 42,14 41,01 39,85 38,86 37,04
-36																										47,30 47,30 47,30 47,30 47,30 47,30 47,30 47,30 45,54 44,00 42,64 41,23 40,21 39,01 37,88
-42																										45,50 47,30 47,30 47,30 47,30 47,30 47,30 47,30 47,30 47,30 45,88 44,29 42,90 41,45 40,21 39,17 37,88
-48																										37,68 44,37 47,30 47,30 47,30 47,30 47,30 47,30 47,30 47,30 46,22 44,59 43,16 41,67 40,41 39,17
-54																										32,16 34,16 38,54 44,37 47,30 47,30 47,30 47,30 47,30 47,30 47,30 47,30 46,57 44,90 43,16 41,67 40,41 39,17
-60																										30,01 30,92 32,41 34,51 38,54 44,37 47,30 47,30 47,30 47,30 47,30 47,30 47,30 47,30 46,57 44,90 43,16 41,67 40,41
-66																										29,12 29,65 30,43 31,49 32,93 34,87 39,42 45,50 47,30 47,30 47,30 47,30 47,30 47,30 47,30 47,30 46,57 44,90 43,16 41,67 40,03
-72																										30,01 30,75 31,93 33,52 36,04 40,34 46,67 47,30 47,30 47,30 47,30 47,30 47,30 47,30 47,30 46,57 44,59 42,90 41,45
-78																										30,43 31,29 32,66 34,16 36,85 42,27 47,30 47,30 47,30 47,30 47,30 47,30 47,30 47,30 47,30 46,22 44,29 42,64 41,01
-84																										31,93 33,22 34,87 38,54 43,30 47,30 47,30 47,30 47,30 47,30 47,30 47,30 47,30 47,30 45,88 44,00 42,14
-90																										32,66 34,16 36,85 41,29 45,50 47,30 47,30 47,30 47,30 47,30 47,30 47,30 47,30 47,30 45,22 43,43
-96																										35,26 38,54 43,30 47,30 47,30 47,30 47,30 47,30 47,30 47,30 47,30 47,30 46,57 44,59 42,64
-102																										41,29 46,67 47,30 47,30 47,30 47,30 47,30 47,30 47,30 47,30 47,30 47,30 45,88 43,71
-108																										47,30 47,30 47,30 47,30 47,30 47,30 47,30 47,30 46,93 44,59
-114																										47,30 47,30 47,30 47,30 47,30 47,30



Load Chart (Mton/m)

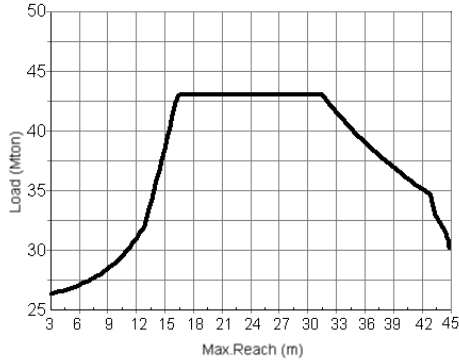
Capacity Chart E-Crane®

Model No. 27450





HEIGHT Relative to BOOM- PIN (m)	CAPACITY CHART (Mton) / Lift Crane Operation																									
	E-crane 27450																									
	REACH (m)																									
	3	5	7	9	11	13	15	17	19	21	23	25	27	29	31	33	35	37	39	41	43	45				
22																						29,06				
20																						29,06				
18																					29,10	29,06				
16																					29,52	29,28	29,08			
14																					29,96	29,60	29,23			
12																					30,58	29,96	29,52	29,15		
10																					31,99	31,21	30,58	29,86	29,39	
8																					34,81	32,94	31,99	31,21	30,31	29,68
6																					35,47	34,94	32,94	31,99	30,88	30,07
4																										
2																										
0																										
-2																										
-4																										
-6																										
-8																										
-10																										
-12																										
-14																										
-16																										
-18																										
-20																										
-22																										
-24																										
-26																										
-28																										
-30																										
-32																										
-34																										



SPECIFICATIONS

	Specifications English (**)	Specifications Metric (**)
Operating Range:		
Minimum Outreach Range (from centerline of rotation)	7'-11.5/16"	2,421 m
Maximum Outreach (from centerline of rotation)	147'-2.11/16"	44,874 m
Downreach Range (below main boom pivot point)	116'-5.1/8"	35,487 m
Lifting Range (vertical lift)	201'-3.3/16"	61,346 m
Boom Operating Angles (above and below horizontal)	+50°/-35°	+50°/-35°
Stick Operating Angles (before and after vertical)	+55°/-45°	+55°/-45°
Degrees of Rotation	360° continuous	360° continuous
Power:		
Power Supply	3-Phase 480 Volts AC, 60 Hz	3-Phase, 380 Volts AC, 50 Hz
Electrical Motor	800 hp	600 kW
Hydraulic Pump Output		
Implement	380 gpm	1.440 L/min
Swing	121 gpm	458 L/min
Hydraulic System Relief Setting	3,625 psi	25.000 kPa
Hydraulic Tank Refill Capacity	1056 USgal	4.000 L
Dimensions:		
Boom Length	88'-7"	27 m
Stick Length	65'-7.3/8"	20 m
Total Weight Superstructure^(*)	814,000 lbs	370.000 kg

(*) Operating weight does not include lubricants, hydraulic oil, bucket and operator

(**) Materials and specifications are subject to change without notice.

See your E-Crane™ dealer for available options.

Alle rechten voorbehouden. Niets uit deze uitgave mag worden veeelvoudigd, opgeslagen in een geautomatiseerd gegevensbestand, of openbaar gemaakt, in enige vorm of op enige wijze, hetzij elektronisch, mechanisch, door fotocopieën, opnamen of enige andere manier, zonder voorafgaande schriftelijke toestemming van nv Indusign (België).

All rights reserved. No part of this publication may be reproduced, stored in a retrieval system, or transmitted, in any form or by any means, electronic, mechanical, photocopying, recording or otherwise without the written permission of nv Indusign (Belgium).

Alle Rechte vorbehalten. Nachdruck, Aufnahme in ein Retrieval-System, jedwede elektronische, mechanische, fotokopierte, oder andere Übertragung, auch auszugsweise, ist ohne ausdrücklicher, schriftlicher Genehmigung von nv Indusign (Belgien) verboten.

Ce manuel ne peut en aucune façon être copié, sans autorisation écrite du firme nv Indusign (Belgique).