

This way, please.

NEW
DINO 190XTE

Step inside for better productivity.
Meet the trailer with 250 kg basket capacity.



Spacious basket with easy-entry gate.
Lifting point for 250 kg load underneath the basket.

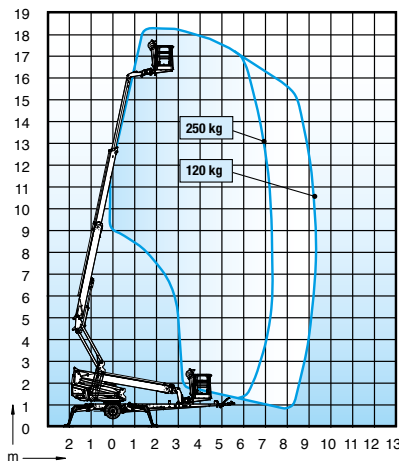
NEW **DINO 190XTE**

**Introducing the new trailer-mounted
DINO 190XTE work platform
with an impressive 250kg basket capacity.**

Technical data

- Easy-entry gate for improved user comfort and access (pic 1)
- Hydraulic basket rotation 180° (pic 2)
- Spacious aluminum basket 0,8 x 1,8 m (pic 3)
- Lifting point underneath basket enabling material lifting up to 250 kg (pic 4)

Working height	18.4 m	Boom rotation	Continuous
Platform height	16.4 m	Power source	230VAC 1,5kW / Power pack 3,7 kW (option)
Outreach	7,3m/ 250 kg; 9,3/120kg	Boom control	Proportional
Basket capacity	250 kg	Automatic levelling	Option
Basket size	0,8x1,8	Basket load sensor	Std
Basket rotation	180°	Power outlets in basket	Std
Weight	~2400 kg	Gradeability	25%
Length	7,48 m	Gradeability	25%
Width	1,95 m	Drive from the basket	std
Height	2,46 m		
Tukileveys/pituus	3,9x4,3 m		



DINOLIFT
Up to the Job

Dinolift Oy
Raikkolantie 145 • FI-32210 LOIMAA • FINLAND • Tel. +358 (0)20 1772 400 • Fax +358 (0)2 76 27 160
www.dinolift.com

Dinolift Oy is a Finnish company that designs, manufactures and sells high-quality DINO aerial work platforms since 1974. DINO platforms allow you to work above ground safely and effectively, while offering an enjoyable user experience from ground up. DINO lifts have been sold to more than 40 countries around the world, with exports accounting for 75% of production. The company's main markets are in the Nordic countries and in northern Europe.

Technical specifications are subject to change without prior notice.

Courtesy of Crane.Market