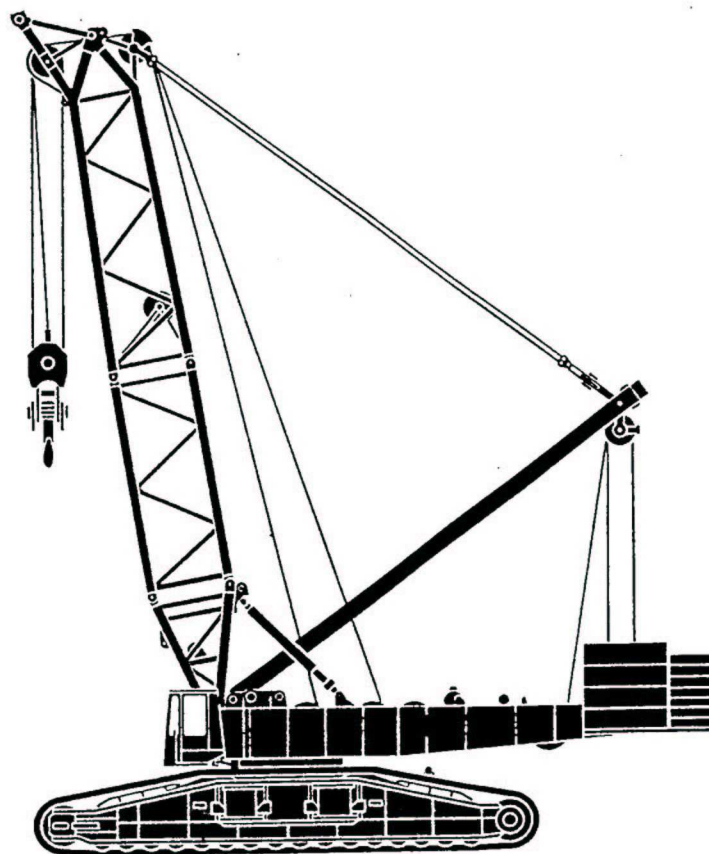
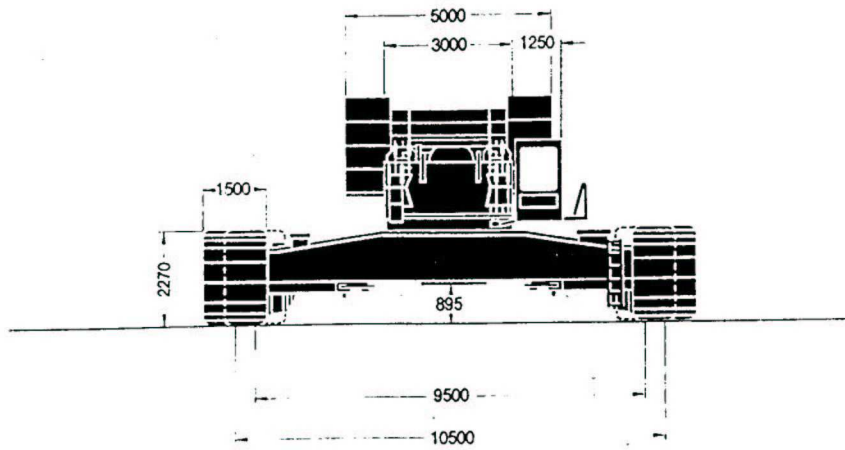
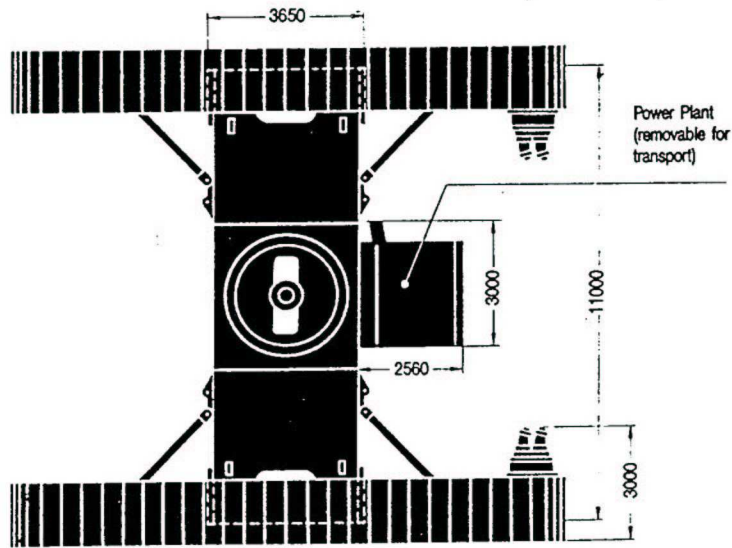
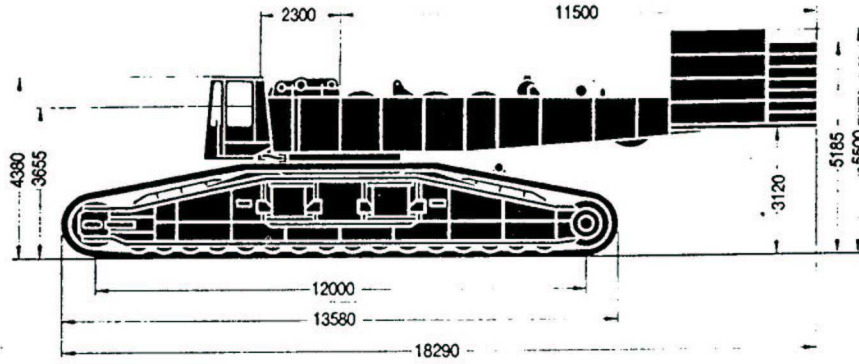


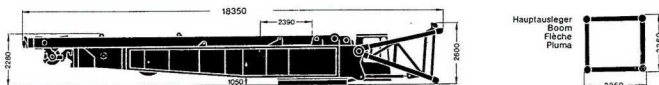
---

# DEMAG CC4000





Weight of Counterweighted Machine with 18 m Boom	425 t
Superstructure (with 4 drums, foot section of boom and mast gantry)	77,8 t
Carbody	51,5 t
Crawler Side-Frames	2 x 72,3 t
Counterweight	140 t
Ground Pressure (based on a total weight of 425 t)	(1,18 kp/cm <sup>2</sup> ) 11,8 N/m <sup>2</sup>



1230 x 5000 x 730  
4,83 t

1200 x 5000 x 315  
2 x 9,1 t = 18,2 t



1110 x 2200 x 600  
4 x 8,7 t = 34,8 t



1235 x 2200 x 600  
2,3 t



1200 x 5000 x 285  
3 x 8,8 t = 26,4 t



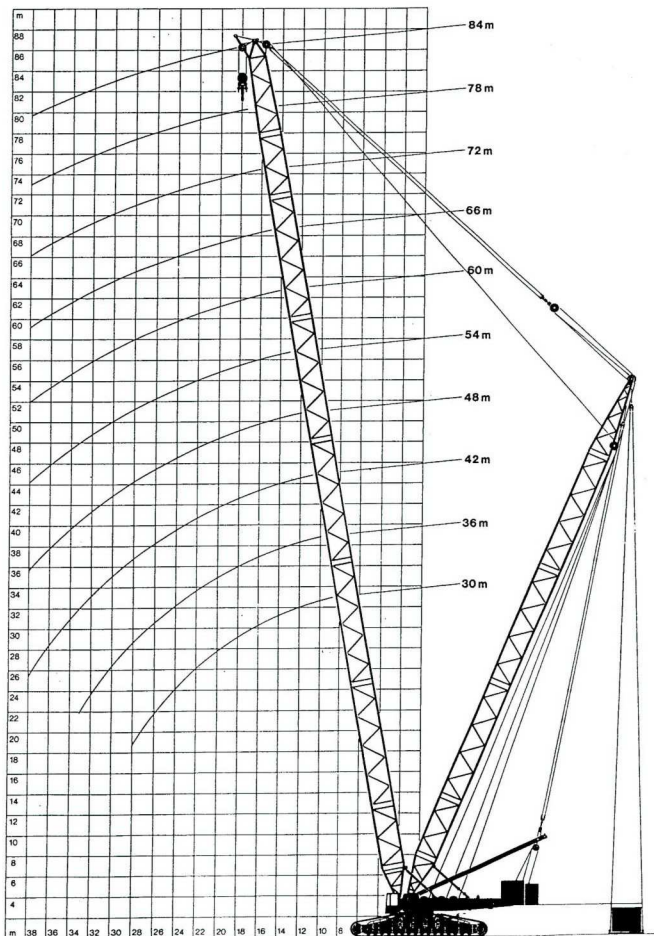
1200 x 5000 x 345  
2 x 8,7 t = 17,4 t



1235 x 2200 x 600  
2,3 t




1110 x 2200 x 600  
4 x 8,7 t = 34,8 t



# Superlift Capacities


# DEMAG CC4000

 10.5-m Track, 140-t Counterweight

75% (360°)

Main Boom	Mast Length		Superlift Counterweight (t)						
	Radius		0	50	100	150	200	250	
	m	m	t	t	t	t	t	t	
30	with Heavy-Duty Hammer Head	30	8.5	*430	*500	*575	*655	*730	*800
			10	*422	*477	*532	*587	*642	*697
			12	*405	*450	*505	*560	*615	*670
		16	18	*319	*353	*387	*421	*455	*489
			20	*292	*326	*360	*394	*428	*462
			22	*265	*300	*334	*368	*402	*436
	with Universal-Head	30	18	*174	*200	*226	*252	*278	*304
			20	*168	*194	*220	*246	*272	*298
			22	*162	*188	*214	*240	*266	*292
		16	24	*156	*182	*208	*234	*260	*286
			26	*150	*176	*202	*228	*254	*280
			28	*144	*170	*196	*222	*248	*274
54	with Heavy-Duty Hammer Head	30	10	*357	*420	*483	*546	*609	*672
			12	*351	*414	*477	*540	*603	*666
			14	*345	*408	*471	*534	*597	*660
		16	18	*282	*345	*408	*471	*534	*597
			20	*276	*339	*402	*465	*528	*591
			22	*270	*333	*396	*459	*522	*585
	with Universal-Head	30	20	*146	*192	*238	*284	*330	*376
			22	*140	*186	*232	*278	*324	*370
			24	*134	*180	*226	*272	*318	*364
		16	26	*128	*174	*220	*266	*312	*358
			28	*122	*168	*214	*260	*306	*352
			30	*116	*162	*208	*254	*300	*346
66	with Heavy-Duty Hammer Head	30	12	*287	*350	*413	*476	*539	*602
			14	*281	*344	*407	*470	*533	*596
			16	*275	*338	*401	*464	*527	*590
		16	18	*269	*332	*395	*458	*521	*584
			20	*263	*326	*389	*452	*515	*578
			22	*257	*320	*383	*446	*509	*572
	with Universal-Head	30	20	*142	*188	*234	*280	*326	*372
			22	*136	*182	*228	*274	*320	*366
			24	*130	*176	*222	*268	*314	*360
		16	26	*124	*170	*216	*262	*308	*354
			28	*118	*164	*210	*256	*302	*348
			30	*112	*158	*204	*250	*296	*342
72	with Heavy-Duty Hammer Head	30	14	*210	*273	*336	*399	*462	*525
			16	*204	*267	*330	*393	*456	*519
			18	*198	*261	*324	*387	*450	*513
		16	20	*192	*255	*318	*381	*444	*507
			22	*186	*249	*312	*375	*438	*501
			24	*180	*243	*306	*369	*432	*495
	with Universal-Head	30	20	*136	*182	*228	*274	*320	*366
			22	*130	*176	*222	*268	*314	*360
			24	*124	*170	*216	*262	*308	*354
		16	26	*118	*164	*210	*256	*302	*348
			28	*112	*158	*204	*250	*296	*342
			30	*106	*152	*198	*244	*290	*336
84	with Heavy-Duty Hammer Head	30	16	*188	*251	*314	*377	*440	*503
			18	*182	*245	*308	*371	*434	*497
			20	*176	*239	*302	*365	*428	*491
		16	22	*170	*233	*296	*359	*422	*485
			24	*164	*227	*290	*353	*416	*479
			26	*158	*221	*284	*347	*410	*473
	with Universal-Head	30	20	*132	*178	*224	*270	*316	*362
			22	*126	*172	*218	*264	*310	*356
			24	*120	*166	*212	*258	*304	*350
		16	26	*114	*160	*206	*252	*298	*344
			28	*108	*154	*200	*246	*292	*338
			30	*102	*148	*194	*240	*286	*332
96	with Heavy-Duty Hammer Head	30	18	*158	*221	*284	*347	*410	*473
			20	*152	*215	*278	*341	*404	*467
			22	*146	*209	*272	*335	*398	*461
		16	24	*140	*203	*266	*329	*392	*455
			26	*134	*197	*260	*323	*386	*449
			28	*128	*191	*254	*317	*380	*443
	with Universal-Head	30	20	*138	*184	*230	*276	*322	*368
			22	*132	*178	*224	*270	*316	*362
			24	*126	*172	*218	*264	*310	*356
		16	26	*120	*166	*212	*258	*304	*350
			28	*114	*160	*206	*252	*298	*344
			30	*108	*154	*200	*246	*292	*338

\* With 2 hook-blocks (lifting beam optional)

 10.5-m Track, 140-t Counterweight

75% (360°)

Radius m	Length of Main Boom														
	18 m	24 m	30 m	36 m	42 m	48 m	54 m	60 m	66 m	72 m	78 m	84 m	90 m	96 m	102 m
6	650**	-	-	-	-	-	-	-	-	-	-	-	-	-	-
7	570**	500*	-	-	-	-	-	-	-	-	-	-	-	-	-
8	500*	460*	440*	-	-	-	-	-	-	-	-	-	-	-	-
9	430*	425*	420*	420*	419*	-	-	-	-	-	-	-	-	-	-
10	380	375	375*	373*	371*	370*	360*	314*	-	-	-	-	-	-	-
12	307	305	303	302*	300*	299*	298*	296*	266*	232*	200*	-	-	-	-
14	258	256	254	253	251*	250*	248*	247*	245*	226*	199*	176*	152*	134*	110
16	222	220	218	217	215	214*	212*	211*	210*	208*	198*	174*	151*	132*	110
18	194	192	190	189	188	186	185*	184*	182*	181*	180*	172*	148*	130*	109
20	-	164	163	162	160	160	159	158	157*	156*	155*	155*	145*	128*	108
22	-	144	142	141	140	139	138	137	136	135*	134*	134*	133*	125*	106
24	-	-	126	125	123	122	121	120	119	118	117*	117*	116*	115*	104
26	-	-	113	112	110	109	108	107	106	105	104	103*	103*	102*	101
28	-	-	102	101	99	98	97	96	95	94	93	92	91*	91*	90
30	-	-	-	92	90	89	88	87	86	85	84	83	82	82	81
34	-	-	-	-	76	75	74	72	71	70	69	69	68	67	66
38	-	-	-	-	65	64	63	61	60	59	58	58	57	56	55
42	-	-	-	-	-	56	54	53	52	51	50	49	48	47	46
46	-	-	-	-	-	-	48	46	45	44	43	42	41	40	39
50	-	-	-	-	-	-	-	41	39	38	37	36	35	34	33
54	-	-	-	-	-	-	-	36	35	34	32	31	30	29	28
58	-	-	-	-	-	-	-	31	30	28	27	26	25	24	24
62	-	-	-	-	-	-	-	-	-	26	25	24	22	21	20
66	-	-	-	-	-	-	-	-	-	-	22	21	19	18	17
70	-	-	-	-	-	-	-	-	-	-	19	18	17	15	14
74	-	-	-	-	-	-	-	-	-	-	-	16	14	13	12
78	-	-	-	-	-	-	-	-	-	-	-	-	12	11	10
82	-	-	-	-	-	-	-	-	-	-	-	-	-	9	8

\*\* Only with heavy-duty hammer head and 2 x 400t hook-block.

\* Double hook-block required.

Main-boom capacities for 9.5-m track available on request.

Additional combinations and lifting capacities on request.



## Crane Capacity Notes

Gross capacities do not exceed 75% of tipping load and are in conformance with DIN 15019.2 (test load =  $125 \times$  lifting load +  $0.1 \times$  dead weight of boom reduced to boom point).

The weight of hook block and all other load-handling accessories is considered part of the load, and suitable allowance for them should be made.

Crane with maximum length of boom can still operate safely up to a

Wind Pressure of  $60 \text{ N/m}^2$

and a Wind Speed of  $9.8 \text{ m/s}$

Wind Surface of Load  $1 \text{ m}^2$   $\Delta$  load

All capacities above the parting lines in the charts depend on a firm level, uniformly supporting surface. Shorter boom lengths and lower capacities apply to sloping positions and travel over uneven ground.

Loads suspended from the Fly Jib are not allowed to be travelled into position, and limitations on boom length must be observed when travelling without a load over uneven ground.

Consult operation manual for further particulars and higher wind speeds.

While every care has been taken in the preparation of the ratings given in this leaflet, and all reasonable steps have been taken to check the accuracy of the information, Decalift cannot accept responsibility for any inaccuracy in respect of any matters arising out of, or in connection with the use of these tables.