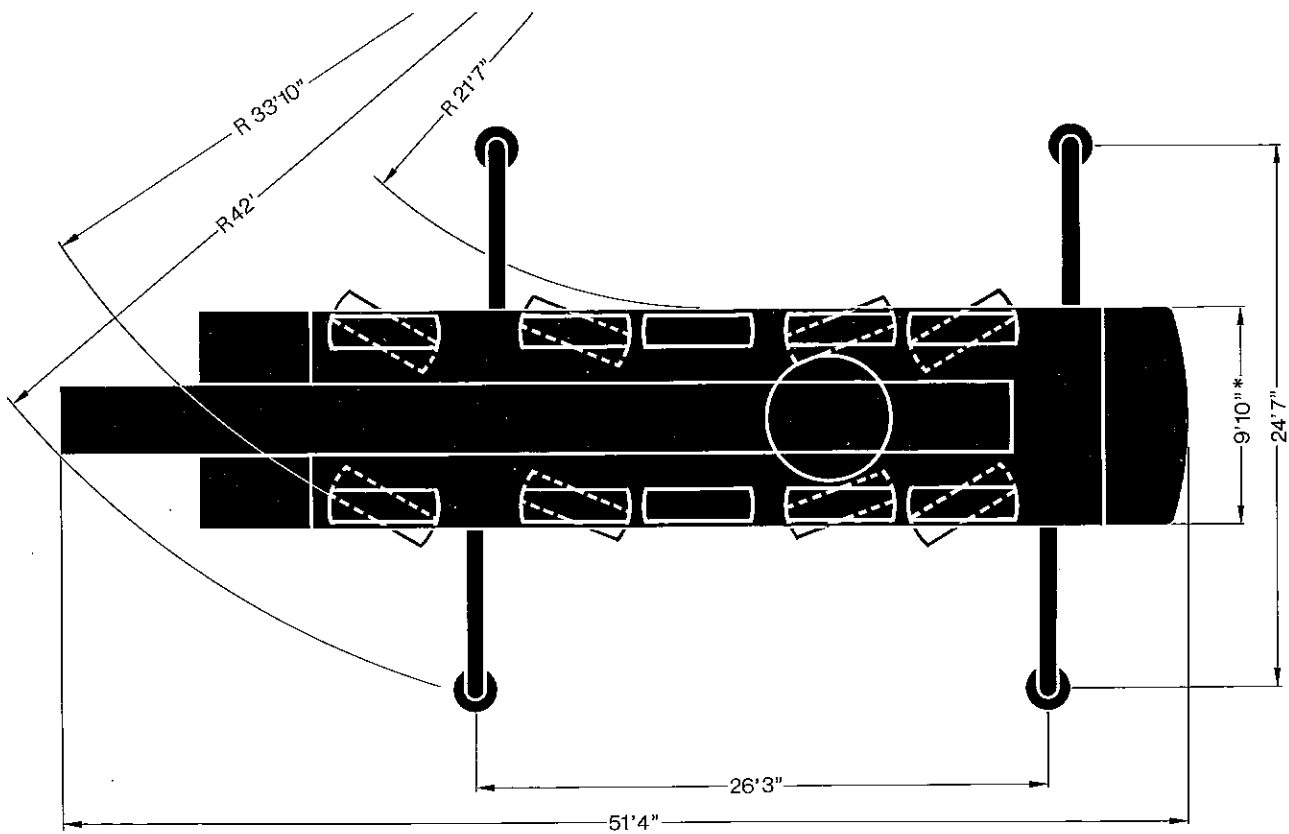
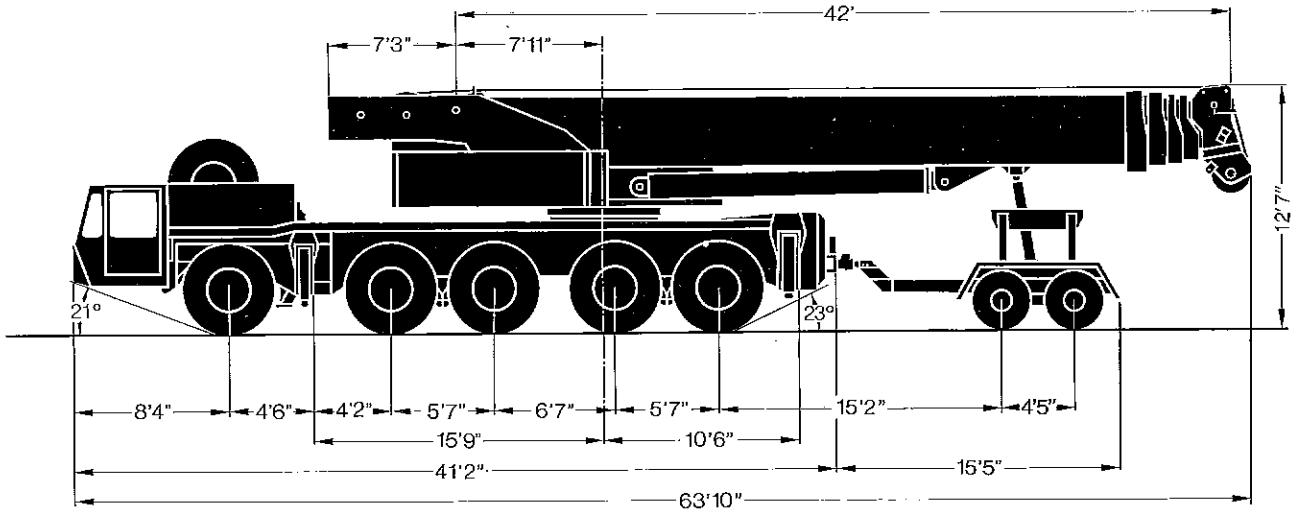


# **180 ton Telescopic Crane AC 335**

# Dimension Chart



\* Width with more than 60,000 lb counterweight 14'5" tail swing 16'11"

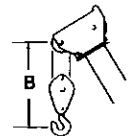
# Specifications

## Carrier Performance

Forward Speeds	0 – 44 mph	Reverse Speeds	3.8 mph	
Ground clearance			14"	
Tail swing – with 24,000 lb or 60,000 lb counterweight			16'4"	
	– with 88,000 lb counterweight			16'10"

## Working Speeds (infinitely variable)

Units	Line Speed	Rope Pull, Single Line	Length of Hoist Rope
Main Hoist	max. 394 ft/min	18,298 lb	984 ft
Secondary Hoist	max. 394 ft/min	18,298 lb	722 ft
Swing			max. 2 RPM
Telescoping from 42 ft to 133 ft			80 s
Boom Elevation from $-2^{\circ}$ to $83^{\circ}$			60 s



## Hook-Block/Crane Hook

Capacity		Number of Sheaves	Number of Lines	Weight	"B"
max.	85%				
353,000 lb	331,000 lb	9	18	3,086 lb	8 ft
221,000 lb	201,000 lb	5	11	2,681 lb	8 ft
139,000 lb	128,000 lb	3	7	2,326 lb	8 ft
88,000 lb	55,000 lb	1	3	1,676 lb	8 ft
28,000 lb	18,000 lb	Crane Hook	1	816 lb	6 ft

# Lifting Capacities with Superlift in 1,000 lb

with outriggers – 360°

88,000 lb Counterweight

85%

Main Boom							Main Boom 164 ft		
Radius	Main Boom						Tele-Extension-Boom 0°		Radius
	* 42 ft	* 72 ft	103 ft	133 ft	149 ft	164 ft	33 ft	56 ft	
ft	lb	lb	lb	lb	lb	lb	lb	lb	ft
9	360.0** 11	-	-	-	-	-	-	-	9
9	331.0**	-	-	-	-	-	-	-	9
11	299.8**	198.0	-	-	-	-	-	-	11
13	275.5	198.0	138.5	-	-	-	-	-	13
15	255.7	198.0	135.1	-	-	-	-	-	15
16	233.7	198.0	130.9	-	-	-	-	-	16
20	199.2	193.6	123.6	84.0	-	-	-	-	20
23	168.4	167.3	117.2	80.9	66.0	-	-	-	23
26	144.1	142.8	110.8	78.4	63.4	44.0	-	-	26
29	125.6	124.3	103.8	74.9	60.0	44.0	-	-	29
33	-	109.5	98.5	72.0	57.5	44.0	-	-	33
39	-	87.9	85.0	67.2	53.5	44.0	25.0	-	39
46	-	72.7	71.8	62.6	50.9	44.0	24.0	17.5	46
52	-	61.0	59.5	58.2	49.3	43.2	23.5	17.5	52
59	-	51.3	50.7	50.7	47.3	40.5	22.7	17.5	59
66	-	-	42.3	42.5	44.0	38.5	22.0	16.9	66
72	-	-	36.3	36.3	37.9	37.4	21.1	16.3	72
79	-	-	31.3	31.3	32.8	34.1	20.0	15.6	79
85	-	-	27.3	27.1	27.7	30.0	19.1	14.5	85
92	-	-	-	23.3	25.1	26.4	18.2	13.8	92
98	-	-	-	20.0	21.8	23.1	16.9	13.0	98
105	-	-	-	17.6	19.1	20.2	16.0	12.3	105
111	-	-	-	15.2	16.5	18.0	15.4	11.6	111
118	-	-	-	-	14.5	15.8	14.3	11.0	118
125	-	-	-	-	12.7	14.1	13.6	10.5	125
131	-	-	-	-	11.4	12.3	12.7	10.1	131
138	-	-	-	-	-	11.0	11.2	9.7	138
144	-	-	-	-	-	9.9	9.9	9.0	144
150	-	-	-	-	-	-	8.5	8.5	150
157	-	-	-	-	-	-	7.7	8.1	157
164	-	-	-	-	-	-	6.6	7.7	164
170	-	-	-	-	-	-	-	7.0	170
177	-	-	-	-	-	-	-	6.1	177
184	-	-	-	-	-	-	-	5.2	184

\* without Superlift-Suspension!

\*\* only with add. attachment!

1) over rear only

# Lifting Capacities on Fixed Fly Jib Boom (3°) and Superlift

with outriggers – 360°

88,000 lb counterweight

85%

60,000 lb counterweight

85%

88,000 lb counterweight				60,000 lb counterweight					
Boom	Radius	Fixed Fly Jib 3°		Boom	Radius	Fixed Fly Jib 3°			
		39 ft	59 ft			39 ft	59 ft	79 ft	98 ft
	ft	lb	lb		ft	lb	lb	lb	lb
	33	22.7	-		33	22.7	-	-	-
	39	21.8	16.5		39	21.8	16.5	-	-
	46	21.1	15.8		46	21.1	15.8	13.2	-
	52	20.5	15.4		52	20.5	15.4	12.3	9.4
	59	20.0	15.0		59	20.0	15.0	11.9	9.2
	66	19.4	14.5		66	19.4	14.5	11.2	8.8
	72	18.5	14.1		72	18.5	14.1	11.0	8.3
	79	17.8	13.6		79	17.8	13.6	10.3	8.1
<b>164 ft</b>	85	17.1	13.2	<b>164 ft</b>	85	17.1	13.2	9.9	7.7
	92	16.5	12.5		92	16.5	12.5	9.7	7.0
	98	15.8	12.1		98	15.8	12.1	9.2	6.6
	111	14.1	11.4		111	11.9	11.4	8.1	5.7
	125	12.3	10.3		125	8.3	9.4	7.0	5.0
	138	10.1	9.7		138	5.7	6.4	5.9	4.6
	150	8.6	8.3		150	3.7	4.4	4.4	4.1
	164	6.6	7.0		164	1.9	2.6	3.0	3.0
	170	5.2	6.1		170	-	1.9	2.4	2.8
	177	4.4	5.2		177	-	-	1.7	2.2

# Lifting Capacities with Superlift in 1,000 lb with outriggers – 360°

## 60,000 lb Counterweight

85%

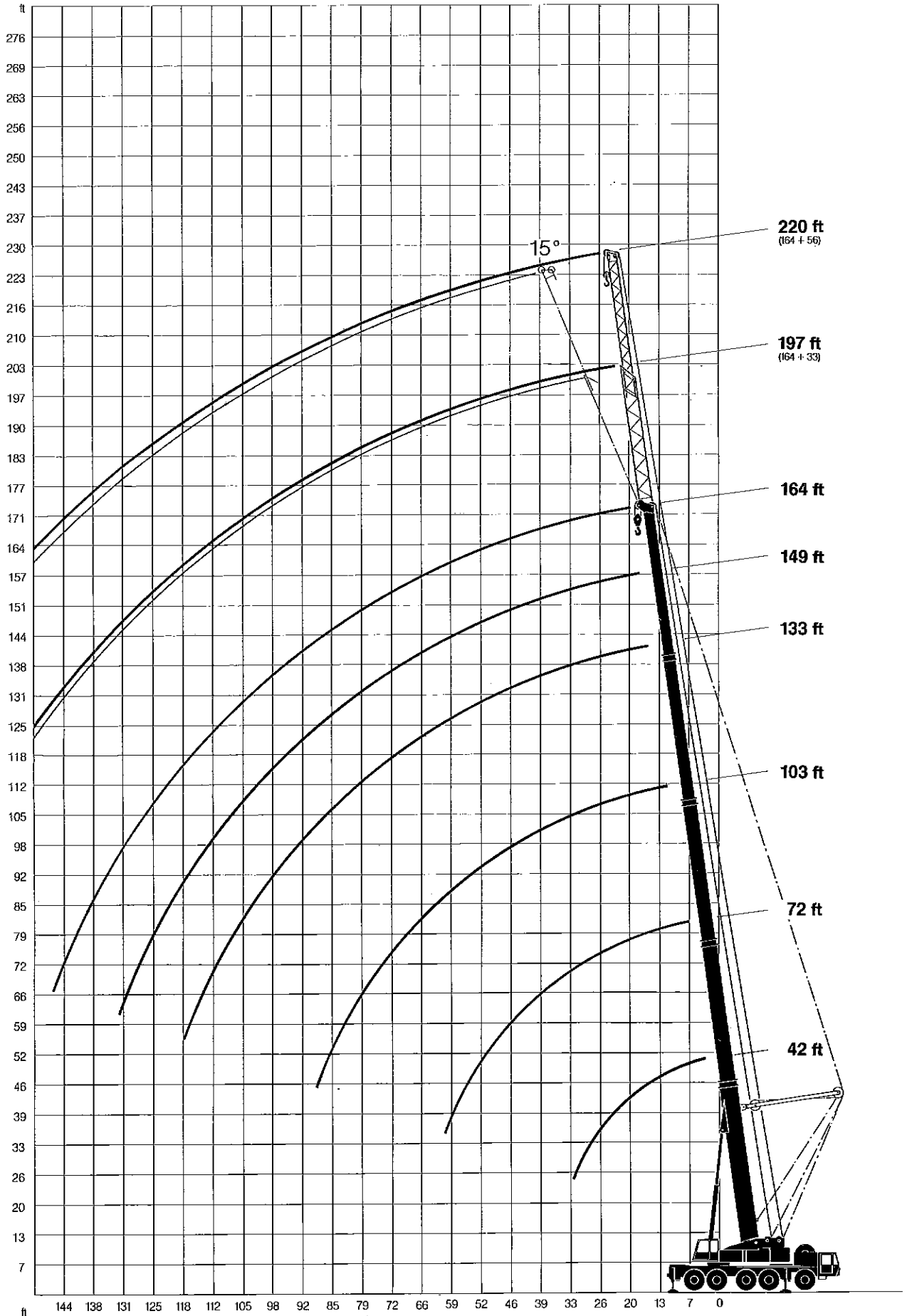
Main Boom							Main Boom 164 ft Tele-Extension-Boom 0°		
Radius	* 42 ft	* 72 ft	103 ft	133 ft	149 ft	164 ft	33 ft	56 ft	Radius
ft	lb	lb	lb	lb	lb	lb	lb	lb	ft
9	331.0**	-	-	-	-	-	-	-	9
11	299.8**	198.0	-	-	-	-	-	-	11
13	275.5	198.0	136.5	-	-	-	-	-	13
15	242.5	198.0	135.1	-	-	-	-	-	15
16	219.8	198.0	130.9	-	-	-	-	-	16
20	178.7	177.9	123.6	84.0	-	-	-	-	20
23	149.2	148.1	117.2	80.9	66.0	-	-	-	23
26	127.4	126.3	110.8	78.4	63.4	44.0	-	-	26
29	110.9	109.5	103.8	74.9	60.0	44.0	-	-	29
33	-	96.3	95.4	72.0	57.5	44.0	-	-	33
39	-	74.2	73.4	67.2	53.5	44.0	25.0	-	39
46	-	58.2	57.3	57.0	50.9	44.0	24.0	17.5	46
52	-	46.7	45.8	45.6	48.9	43.2	23.5	17.5	52
59	-	38.3	37.7	37.4	40.1	39.9	22.7	17.5	59
66	-	-	31.0	30.8	33.0	34.6	22.0	17.5	66
72	-	-	26.2	25.8	27.8	29.1	21.1	16.3	72
79	-	-	21.6	21.3	23.3	24.9	20.0	15.6	79
85	-	-	18.0	17.8	19.6	21.1	19.1	14.5	85
92	-	-	-	14.5	16.5	18.0	18.3	13.8	92
98	-	-	-	12.1	13.9	15.4	15.8	13.0	98
105	-	-	-	9.9	11.7	13.2	13.4	12.3	105
111	-	-	-	8.1	9.9	11.2	11.4	11.6	111
118	-	-	-	-	8.1	9.7	9.7	11.0	118
125	-	-	-	-	6.6	7.9	8.1	9.9	125
131	-	-	-	-	5.2	6.6	6.6	8.3	131
138	-	-	-	-	-	5.2	5.3	7.0	138
144	-	-	-	-	-	4.4	4.4	6.1	144
150	-	-	-	-	-	-	3.3	5.0	150
157	-	-	-	-	-	-	2.4	4.2	157
164	-	-	-	-	-	-	-	3.3	164
170	-	-	-	-	-	-	-	2.6	170
177	-	-	-	-	-	-	-	-	177
184	-	-	-	-	-	-	-	-	184

\* without Superlift-Suspension!  
\*\* only with add. attachment!

# Working Ranges

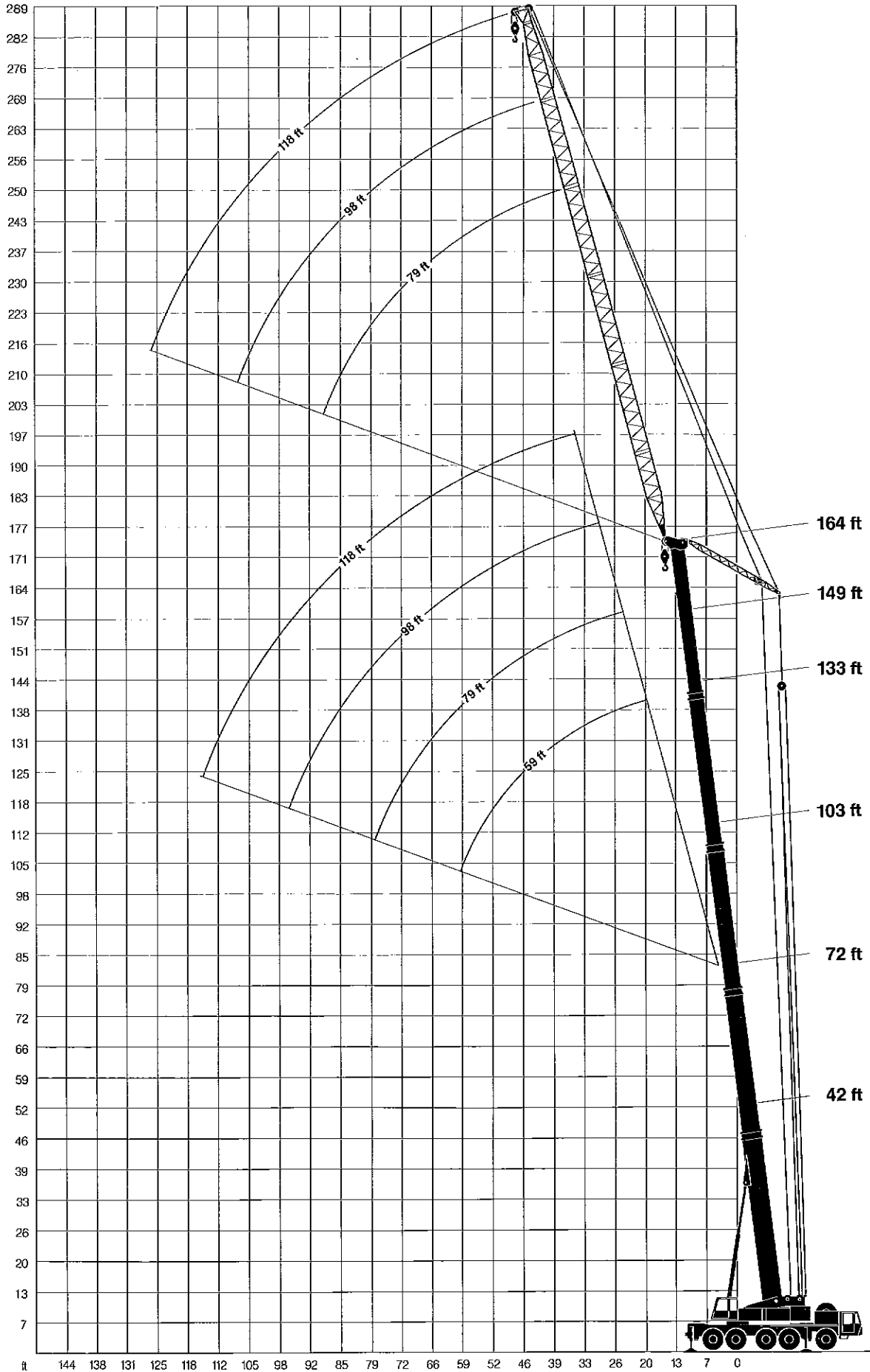
— Main boom  
— Tele-Extension Jib

42 ft — 164 ft  
33 ft — 56 ft



# Working Ranges

— luffing jib: 59 ft, 79 ft, 98 ft, 118 ft



# Lifting Capacities in 1,000 lb

with outriggers – 360°

## on Luffing Fly Jib

24,000 lb counterweight 75%

Boom	Radius	Luffing Fly Jib			
		59 ft	79 ft	98 ft	118 ft
	ft	lb	lb	lb	lb
<b>72 ft</b>	26	68.0	-	-	-
	29	67.2	-	-	-
	33	66.1	53.0	-	-
	39	62.9	48.5	37.0	-
	46	44.0	35.4	25.0	-
	52	30.0	39.2	33.0	23.8
	59	-	31.7	30.4	22.0
	66	-	25.3	28.4	20.5
	72	-	19.8	24.2	18.7
	79	-	14.1	20.0	16.9
	85	-	-	16.3	15.4
92	-	-	12.7	13.8	
98	-	-	-	12.5	
105	-	-	-	10.8	
111	-	-	-	8.1	
<b>103 ft</b>	29	50.0	-	-	-
	33	48.5	-	-	-
	39	45.1	33.0	-	-
	46	41.8	31.9	26.0	-
	52	37.2	30.8	24.9	19.0
	59	27.1	29.7	24.0	18.2
	66	-	28.6	22.9	17.1
	72	-	24.4	22.0	16.5
	79	-	18.5	20.9	16.0
	85	-	-	19.8	15.4
	92	-	-	16.3	15.0
98	-	-	12.3	14.3	
105	-	-	-	13.4	
111	-	-	-	10.3	
118	-	-	-	7.4	
125	-	-	-	-	
131	-	-	-	-	
<b>133 ft</b>	39	27.0	21.0	-	-
	46	25.1	19.6	16.0	-
	52	23.8	18.7	15.2	11.0
	59	22.9	18.0	14.7	11.0
	66	22.4	17.4	14.3	10.1
	72	-	16.7	13.6	9.4
	79	-	16.0	13.2	9.2
	85	-	15.4	12.7	9.0
	92	-	-	12.5	8.8
	98	-	-	12.1	8.8
	105	-	-	-	8.5
111	-	-	-	8.3	
118	-	-	-	7.9	
125	-	-	-	-	
131	-	-	-	-	
<b>149 ft</b>	39	22.0	16.0	-	-
	46	20.9	14.9	11.0	-
	52	19.8	14.3	9.9	5.0
	59	19.1	13.8	9.7	5.0
	66	18.2	13.4	9.2	4.8
	72	-	13.0	9.0	4.6
	79	-	12.5	9.0	4.4
	85	-	12.1	9.0	4.4
	92	-	-	8.8	4.4
	98	-	-	8.8	4.4
	105	-	-	8.8	4.4
111	-	-	-	4.4	
118	-	-	-	4.4	
125	-	-	-	4.4	
131	-	-	-	-	
<b>164 ft</b>	46	-	11.0	8.0	-
	52	-	10.8	7.2	-
	59	-	10.3	7.0	2.2
	66	-	10.1	6.8	1.8
	72	-	9.9	6.3	1.5
	79	-	9.7	6.1	1.3
	85	-	9.4	6.1	1.3
	92	-	-	5.9	1.3
	98	-	-	5.9	1.3
	105	-	-	5.7	1.3

## on Fixed Fly Jib

60,000 lb counterweight 85%

Boom	Radius	Fixed Fly Jib							
		39 ft		59 ft		79 ft		98 ft	
	ft	3°	20°	3°	20°	3°	20°	3°	20°
		lb	lb	lb	lb	lb	lb	lb	lb
<b>164 ft</b>	33	24.0	-	-	-	-	-	-	-
	39	23.1	-	17.0	-	-	-	-	-
	46	21.8	-	16.3	-	13.8	-	-	-
	52	20.2	17.0	15.6	-	13.2	-	9.9	-
	59	18.9	16.0	14.9	13.0	12.1	-	9.7	-
	66	17.8	15.2	14.1	11.9	11.4	-	9.0	-
	72	16.9	14.1	13.4	11.4	10.5	9.0	8.5	-
	79	15.6	13.4	12.5	11.0	10.1	8.3	8.1	-
	85	14.3	12.5	11.9	10.3	9.7	8.1	7.7	6.0
	92	13.4	11.9	11.2	9.9	9.0	7.7	7.0	5.9
	98	12.1	11.2	10.3	9.7	8.3	7.2	6.6	5.7
111	10.1	9.7	8.8	8.8	6.8	6.3	5.7	5.2	
125	8.3	8.1	7.7	7.7	5.2	5.9	4.6	4.4	
138	5.7	6.3	6.3	6.6	4.4	5.5	3.3	3.9	
150	3.7	4.1	4.4	5.5	3.3	4.6	2.8	3.5	
164	1.9	2.4	2.6	3.5	2.4	3.7	1.9	2.8	
170	-	1.5	1.9	2.6	1.9	3.0	-	2.4	
177	-	-	-	1.7	-	2.4	-	-	

24,000 lb counterweight 85%

Boom	Radius	Fixed Fly Jib							
		39 ft		59 ft		79 ft		98 ft	
	ft	3°	20°	3°	20°	3°	20°	3°	20°
		lb	lb	lb	lb	lb	lb	lb	lb
<b>164 ft</b>	33	24.0	-	-	-	-	-	-	-
	39	23.1	-	17.0	-	-	-	-	-
	46	21.8	-	16.3	-	13.8	-	-	-
	52	20.2	17.0	15.6	-	13.2	-	9.9	-
	59	18.9	16.0	14.7	13.0	12.1	-	9.7	-
	66	17.8	15.2	14.1	11.9	11.4	-	9.0	-
	72	16.9	14.1	13.4	11.4	10.5	9.0	8.5	-
	79	14.1	13.4	12.5	11.0	10.1	8.3	8.1	-
	85	11.4	12.5	11.9	10.3	9.7	8.1	7.7	6.0
	92	9.0	11.0	9.7	9.9	9.0	7.7	7.0	5.9
	98	6.8	8.5	7.0	9.7	7.7	7.2	6.6	5.7
111	3.3	4.6	3.9	5.9	4.4	6.3	4.4	5.2	
125	-	1.9	1.5	3.3	1.9	4.1	2.2	4.4	
131	-	-	-	2.2	-	3.0	-	3.7	
137	-	-	-	-	-	1.9	-	2.6	
144	-	-	-	-	-	-	-	1.7	

### Lifting Capacity Notes

Lifting capacities do not exceed 85% of tipping load resp. 75% of tipping load on luffing fly jib. Max. wind speed: 50.85 ft/sec or 35 mph. Crane operation up to a wind force of 5% Beaufort scale (29.5 ft/sec or 20 mph) permissible. The weights of all load-handling devices are considered part of the load, and suitable allowance for them should be made.

All capacities above the parting line are based on structural strength. The capacities below the parting line are based on stability for the percentage of tipping load indicated.



# Lifting Capacities in 1,000 lb

with outriggers – 360°

## 88,000 lb Counterweight

85%

Radius ft	Main Boom						Main Boom 164 ft		Radius ft
	42 ft	72 ft	103 ft	133 ft	149 ft	164 ft	Tele-Extension-Boom 0°		
	lb	lb	lb	lb	lb	lb	33 ft lb	56 ft lb	
9	331.0**	-	-	-	-	-	-	-	9
11	299.8**	198.0*	-	-	-	-	-	-	11
13	275.5	198.0*	132.0	-	-	-	-	-	13
15	255.7	198.0*	132.0	-	-	-	-	-	15
16	233.7	198.0*	129.1	-	-	-	-	-	16
20	199.2	193.5*	119.0	79.0	-	-	-	-	20
23	188.4	167.3*	109.3	72.7	62.0	-	-	-	23
26	144.1	142.8*	99.8	67.6	58.8	49.0	-	-	26
29	125.6	124.3*	92.3	62.8	54.8	46.9	-	-	29
33	-	109.5	85.0	58.4	51.1	44.0	-	-	33
39	-	87.0	73.6	50.9	44.5	39.6	25.0	-	39
46	-	72.7	67.0	44.7	39.6	35.4	23.8	18.0	46
52	-	61.0	57.3	39.9	35.2	31.5	22.2	18.0	52
59	-	51.3	50.7	35.9	31.9	27.9	20.7	17.1	59
66	-	-	45.1	33.0	28.8	24.4	18.9	16.0	66
72	-	-	39.0	29.9	26.2	22.0	16.9	15.2	72
79	-	-	33.7	27.3	23.8	19.8	15.4	14.1	79
85	-	-	29.7	24.2	22.0	18.2	13.8	12.7	85
92	-	-	-	22.0	20.2	16.7	12.5	11.9	92
98	-	-	-	19.4	18.9	15.4	11.4	10.8	98
105	-	-	-	17.6	17.6	14.3	10.3	10.1	105
111	-	-	-	16.5	16.3	13.2	9.7	9.4	111
118	-	-	-	-	15.2	12.3	8.3	8.3	118
125	-	-	-	-	14.1	11.0	7.9	7.7	125
131	-	-	-	-	12.7	9.9	7.4	7.2	131
138	-	-	-	-	-	8.8	6.8	6.6	138
144	-	-	-	-	-	7.4	6.1	6.1	144
150	-	-	-	-	-	-	5.5	5.5	150
157	-	-	-	-	-	-	4.8	5.0	157
164	-	-	-	-	-	-	4.1	4.6	164
170	-	-	-	-	-	-	-	4.1	170
177	-	-	-	-	-	-	-	3.7	177
184	-	-	-	-	-	-	-	3.3	184

## 60,000 lb Counterweight

85%

Radius ft	Main Boom								Main Boom 164 ft		Radius ft
	42 ft	*** 42 ft	72 ft	*** 72 ft	103 ft	133 ft	149 ft	164 ft	Tele-Extension-Boom 0°		
	lb	lb	lb	lb	lb	lb	lb	lb	33 ft lb	56 ft lb	
9	331.0**	-	-	-	-	-	-	-	-	-	9
11	299.8**	-	198.0*	-	-	-	-	-	-	-	11
13	275.5	-	198.0*	-	132.0	-	-	-	-	-	13
15	242.5	44.0	198.0*	43.0	132.0	-	-	-	-	-	15
16	219.7	40.0	198.0*	39.0	129.1	-	-	-	-	-	16
20	178.7	33.0	177.9*	32.1	119.0	79.0	-	-	-	-	20
23	149.2	27.7	148.1*	26.9	109.3	72.7	62.0	-	-	-	23
26	127.4	23.5	126.3*	22.7	99.8	67.6	58.8	49.0	-	-	26
29	110.8	20.2	109.5	19.4	92.3	62.8	54.8	46.9	-	-	29
33	-	-	96.3	16.5	85.0	58.4	51.1	44.0	-	-	33
39	-	-	74.2	11.9	73.6	50.9	44.5	39.6	25.0	-	39
46	-	-	58.2	8.6	60.1	44.7	39.6	35.4	23.8	18.0	46
52	-	-	46.7	6.1	48.7	39.9	35.2	31.5	22.2	18.0	52
59	-	-	38.3	4.2	40.1	35.9	31.9	27.9	20.7	17.1	59
66	-	-	-	-	33.7	33.0	28.8	24.4	18.9	16.0	66
72	-	-	-	-	28.6	27.9	26.2	22.0	16.9	15.2	72
79	-	-	-	-	24.4	23.5	23.8	19.8	15.4	14.1	79
85	-	-	-	-	20.9	19.8	21.3	18.2	13.8	12.7	85
92	-	-	-	-	-	16.9	18.2	16.7	12.5	11.9	92
98	-	-	-	-	-	14.1	15.6	15.4	11.4	10.8	98
105	-	-	-	-	-	11.9	13.4	13.2	10.3	10.1	105
111	-	-	-	-	-	10.1	11.6	11.2	9.7	9.4	111
118	-	-	-	-	-	-	9.9	9.7	8.3	8.3	118
125	-	-	-	-	-	-	8.3	7.9	7.9	7.7	125
131	-	-	-	-	-	-	7.0	6.6	6.6	7.2	131
138	-	-	-	-	-	-	-	5.2	5.5	6.6	138
144	-	-	-	-	-	-	-	4.4	4.4	6.1	144
150	-	-	-	-	-	-	-	-	3.5	5.0	150
157	-	-	-	-	-	-	-	-	2.6	4.1	157
164	-	-	-	-	-	-	-	-	-	3.3	164
170	-	-	-	-	-	-	-	-	-	2.6	170
177	-	-	-	-	-	-	-	-	-	-	177
184	-	-	-	-	-	-	-	-	-	-	184

\* only pin-connected

\*\* with »heavy-lift« accessoires

\*\*\* over rear, on tyres

# Lifting Capacities in 1,000 lb

with outriggers – 360°

## 24,000 lb Counterweight

85%

Radius	Main Boom								Main Boom 164 ft			Radius
	42 ft	*** 42 ft	72 ft	*** 72 ft	103 ft	133 ft	149 ft	164 ft	Tele-Extension-Boom 0°			
	lb	lb	lb	lb	lb	lb	lb	lb	lb	lb	ft	
9	309.0**	-	-	-	-	-	-	-	-	-	-	9
11	282.1	-	198.0*	-	-	-	-	-	-	-	-	11
13	249.1	-	198.0*	-	132.0	-	-	-	-	-	-	13
15	220.0	35.2	198.0*	34.0	132.0	-	-	-	-	-	-	15
16	194.0	31.0	187.3*	30.4	129.1	-	-	-	-	-	-	16
20	156.3	25.1	143.2*	24.4	119.0	79.0	-	-	-	-	-	20
23	130.0	20.7	113.9	19.8	108.0	72.7	62.0	-	-	-	-	23
26	110.2	17.2	95.9	16.3	94.7	67.6	58.8	46.0	-	-	-	26
29	89.0	14.3	77.3	13.2	80.4	62.8	54.8	46.0	-	-	-	29
33	-	-	64.1	10.8	71.6	58.4	51.1	44.0	-	-	-	33
39	-	-	49.6	7.0	54.0	49.6	44.5	39.6	25.0	-	-	39
46	-	-	36.3	4.2	41.6	39.6	35.4	35.4	23.8	18.0	-	46
52	-	-	28.6	-	32.4	31.9	33.2	31.5	22.2	18.0	-	52
59	-	-	22.9	-	25.5	25.1	26.6	26.4	20.7	17.1	-	59
66	-	-	-	-	20.7	19.8	21.6	21.1	18.9	16.0	-	66
72	-	-	-	-	16.3	15.8	17.4	16.9	16.9	15.2	-	72
79	-	-	-	-	13.2	12.3	14.1	13.6	14.3	14.1	-	79
85	-	-	-	-	10.5	9.7	11.4	10.8	11.6	12.7	-	85
92	-	-	-	-	-	7.4	9.0	8.5	9.0	11.0	-	92
98	-	-	-	-	-	5.7	7.0	6.6	7.0	9.2	-	98
105	-	-	-	-	-	3.9	5.2	5.2	10.3	10.1	-	105
111	-	-	-	-	-	2.6	4.1	3.7	5.5	7.4	-	111
118	-	-	-	-	-	-	-	2.6	4.0	5.9	-	118
125	-	-	-	-	-	-	-	-	2.6	4.4	-	125
131	-	-	-	-	-	-	-	-	-	2.6	-	131
138	-	-	-	-	-	-	-	-	-	-	-	138
144	-	-	-	-	-	-	-	-	-	-	-	144
150	-	-	-	-	-	-	-	-	-	-	-	150
157	-	-	-	-	-	-	-	-	-	-	-	157
164	-	-	-	-	-	-	-	-	-	-	-	164
170	-	-	-	-	-	-	-	-	-	-	-	170
177	-	-	-	-	-	-	-	-	-	-	-	177
184	-	-	-	-	-	-	-	-	-	-	-	184

## w/o Counterweight

85%

Radius	Main Boom								Radius	
	42 ft	*** 42 ft	72 ft	*** 72 ft	103 ft	133 ft	149 ft	164 ft		
	lb	lb	lb	lb	lb	lb	lb	lb		
9	276.0	-	-	-	-	-	-	-	-	9
11	244.7	-	176.0*	-	-	-	-	-	-	11
13	209.4	-	176.0*	-	121.0	-	-	-	-	13
15	182.9	26.5	176.0*	25.5	117.5	-	-	-	-	15
16	160.9	23.1	158.7*	22.2	113.9	-	-	-	-	16
20	121.2	18.0	121.2	17.0	100.7	70.0	-	-	-	20
23	85.9	14.1	85.9	13.2	83.7	64.5	55.7	-	-	23
26	63.9	11.0	61.7	10.1	63.9	59.7	52.0	40.0	-	26
29	48.5	8.6	48.5	7.5	50.7	50.7	48.5	40.0	-	29
33	-	-	39.0	5.5	41.2	40.7	41.6	39.0	-	33
39	-	-	26.4	-	28.4	27.9	31.0	29.1	-	39
46	-	-	18.7	-	20.5	20.0	22.9	21.1	-	46
52	-	-	13.6	-	15.4	14.7	17.1	15.8	-	52
59	-	-	10.1	-	11.6	11.0	13.0	12.1	-	59
66	-	-	-	-	8.8	8.3	9.9	9.2	-	66
72	-	-	-	-	6.6	5.9	7.0	6.8	-	72
79	-	-	-	-	4.4	3.7	5.0	4.6	-	79
85	-	-	-	-	2.8	1.9	3.3	3.0	-	85

\* only pin-connected

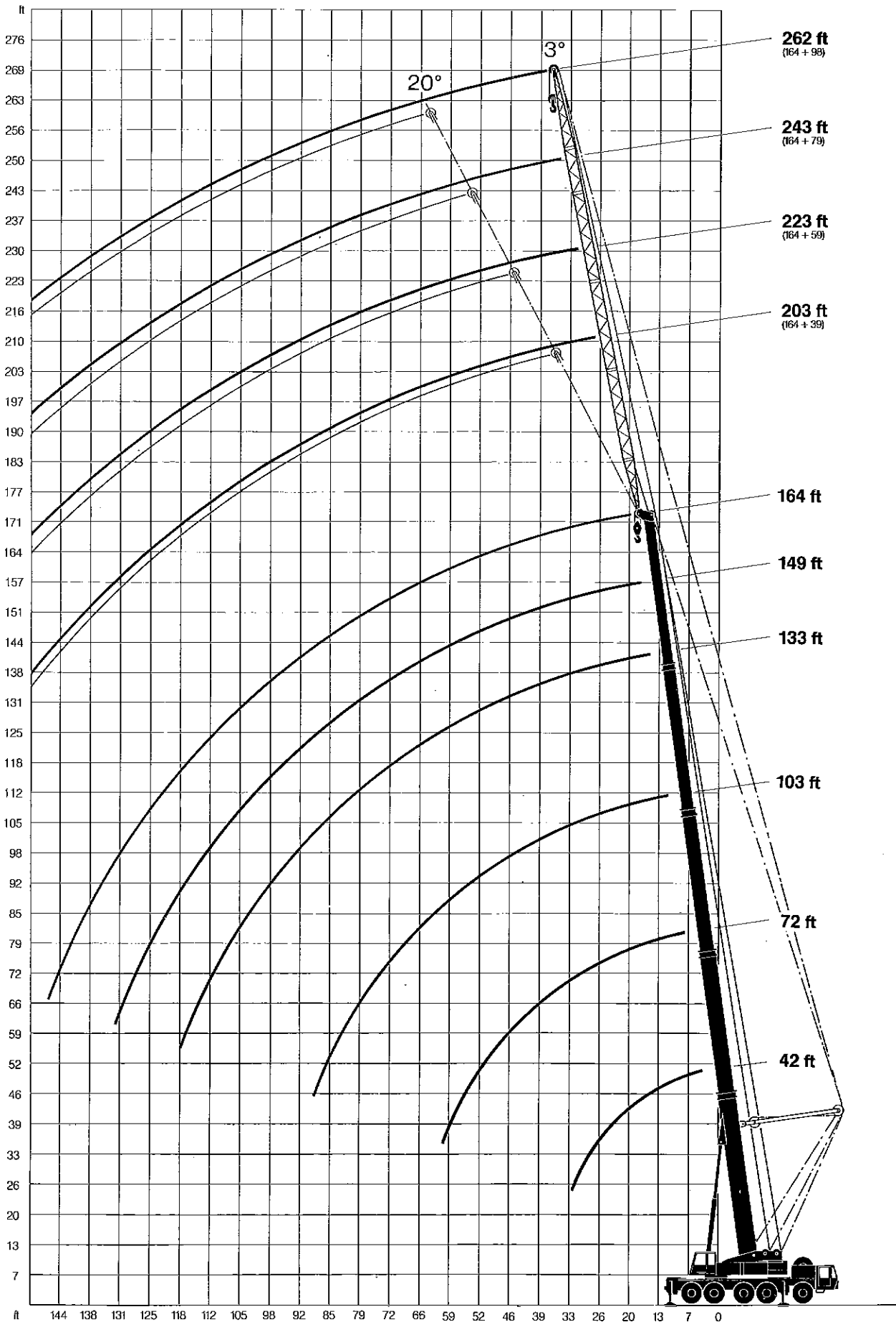
\*\* with »heavy-lift« accessoires

\*\*\* over rear, on tyres

# Working Ranges

— Main boom  
 — Fixed fly jib

42 ft – 164 ft  
 39 ft, 59 ft, 79 ft, 98 ft



## Carrier

### Truck-Type Carrier

Demag 10 x 8 x 8: 1st, 2nd, 4th and 5th axle – driven  
1st, 2nd, 4th and 5th axle – steered

### Frame

Monobox main frame with outrigger boxes integral, of high-grade close-grained steel.

### Outriggers

Four hydraulically telescoping outrigger beams with hydraulic jack legs.

### Engine

- Daimler-Benz OM 442 LA, water-cooled, 8-cylinder diesel engine.
- Output acc. SAE gross: 339 kW (461 hp), max. torque: 1765 Nm at 1100 rpm.
- Fuel-tank capacity: 120 gallons.

### Transmission

ZF-Transmatik synchromesh torque-converter main transmission plus transfer case and differential with lock-out control; electro-pneumatic gearshift; 16 speeds forward, including in low, 2 speeds reserve.

### Axles

Heavy special crane axles. All driven axles with planetary reduction hubs and differential lock-out.

### Suspension

Hydro-pneumatic suspension of all axles, 3 suspension systems independent of one another; all axles hydraulically lockable.

### Wheels

Single tyres 20.5 R 25 on rims 17.00 – 25/2.0.

### Steering

Dual-circuit semibloc mechanical steering with hydraulic booster.

### Brakes

Service-brake: air-operated dual circuit brake system, acting on all wheels. Parking brake: spring-loaded cylinders. Continuous braking: hydraulic retarder, integral with transmission.

### Electrical Equipment

24-volt system, DC.

### Cab

Rubber-mounted steel-plate 3-man cab with safety-glass windows and all controls.

## Superstructure

### Upper Frame

Torsion-resistant weldment of high-grade close-grained steel.

### Paneling

Sectional side panels, removable for service accessibility.

### Slewing Ring

Triple-row roller bearing slew circle with external ring gear.

### Engine

- Daimler-Benz OM 366 A, water-cooled, 6-cylinder diesel engine.
- Output acc. SAE gross: 127 kW (172 hp), max. torque: 560 Nm at 1400 rpm.
- Fuel-tank capacity: 75 gallons.

### Hydraulic System

Two variable-displacement axial-piston hydraulic pumps with automatic power control and one constant-displacement hydraulic pump for three hydraulic circuits and three simultaneous crane motions; one constant-displacement hydraulic pump for the low-pressure servo control.

### Hoist

Constant-displacement axial-piston hydraulic motor; hoist drum with integral planetary gearing and spring-loaded holding brake; anti-twist hoist cable.

### Slewing Gear

Axial-piston hydraulic motor with planetary gearing; foot-pedal operated slewing brake and spring-loaded holding brake.

### Boom Elevation

One differential cylinder with pilot-controlled lowering brake valve.

### Control

Four self-centering levers control the crane operations through hydraulic power and pilot valves.

### Cab

Spacious all-steel luxury cab with large folding-out front windscreen, roof window, sliding door, self-contained hot-air heating unit and ventilation system, all control and monitoring instruments for crane operation, spotlights.

### Main Boom

5-section hydraulically telescoping boom, fabricated from high-grade close-grained steel, featuring the familiar Demag »ovaloid« design of rectangular box members with rounded-off corners. Each section slides on diagonally arranged self-centering plastic shoes. Boom head with mounting lugs for extension and fly jibs.

### Counterweight

60,000 lb consisting of pieces of 10,000/14,000/2 x 18,000 lb.

### Safety Devices

Electronic overload cut-out (load-moment limiting device) with digital read-out for hook load, rated load, boom length, boom angle, load radius; analogous display to indicate the capacity utilization; limit switches on hoist and lowering motions; pressure-relief and safety holding valves.

### Crab-Steering Feature

Steering of 4th and 5th axles independent of 1st and 2nd axles. The non-steered 3rd axle can be raised via Spring Suspension system.

### Secondary Hoist

Constant-displacement axial-piston hydraulic motor; hoist drum with integral planetary gearing and spring-loaded holding brake, anti-twist hoist cable.

### Boom Pin-Lock System

Hydraulically operated pin-lock system for the telescoping boom sections.

### Additional Counterweight

28,000 lb counterweight, consisting of 2 x 14,000 lb, suspended from sides of standard counterweight; overall width when mounted: 14' 5".

### Superlift Attachment

The Superlift attachment is a simple means to increase the lifting capacity of the normal crane. It essentially consists of a boom suspension mast with guy ropes, which provides for an automatic rope-length adjustment for boom-telescoping, a boom pin-lock-system, and 28,000 lbs. Superlift counterweight. The suspension mast is lowered to the main boom when not needed, or for road transport. The Superlift counterweight is deposited hydraulically, without the use of an auxiliary crane.

### Boom Extension

Telescoping 36 ft – 56 ft side-folding 2-part lattice-type boom extension; with adapter to permit an angular adjustment to 15°.

### Fixed Fly Jib

Non-folding lattice-type fly jib in lengths of 39 ft, 59 ft, 79 ft, 98 ft (using components of the luffing fly jib). Angular adjustment to 3° and 20°.

### Luffing Fly Jib

Lattice-type, in lengths of 59 ft, 79 ft, 98 ft, 118 ft with luffing mast ropes, electrical equipment and safety devices.

Subject to change without notice. Machine Operation is subject to computer charts only.

## Mannesmann Demag Corporation

476 Country Club Drive  
Bensenville, IL 60106  
Telephone: (708) 766-4431  
Telex: 214-909  
Telefax: (708) 766-7549