

AC 250-6




All Terrain Crane

300UST CAPACITY CLASS

	Page:
Dimensions.....	5
Specifications.....	7
Equipment.....	8
Counterweight.....	9

	<p>HA Main boom</p>	10
---	--------------------------------------	----

	<p>HAV-HY Hydraulic swing-away jib.....</p>	14
---	--	----

	<p>HAV-HY-VA Variable extension with hydraulic swing-away jib</p>	17
---	--	----

	<p>MS Runner</p>	20
---	-----------------------------------	----

Technical description.....	22
----------------------------	----

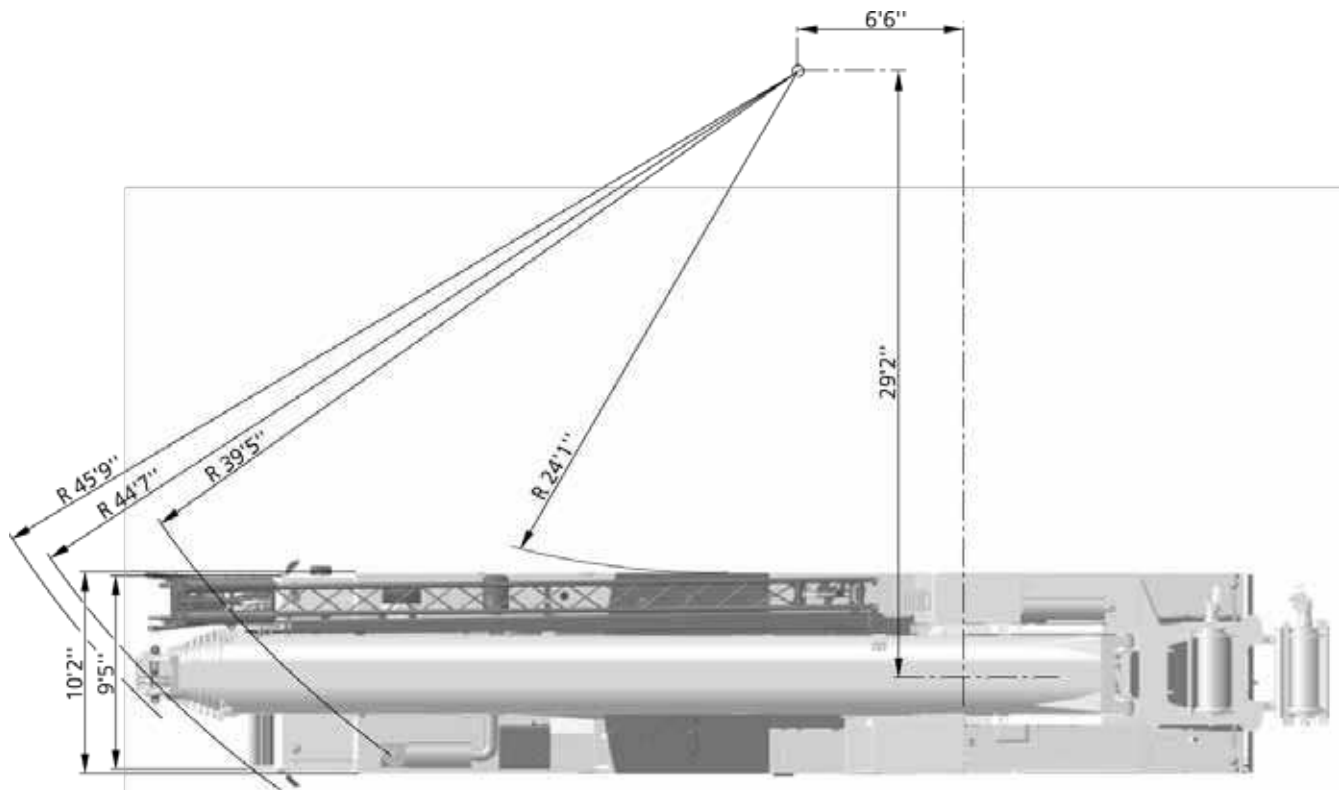
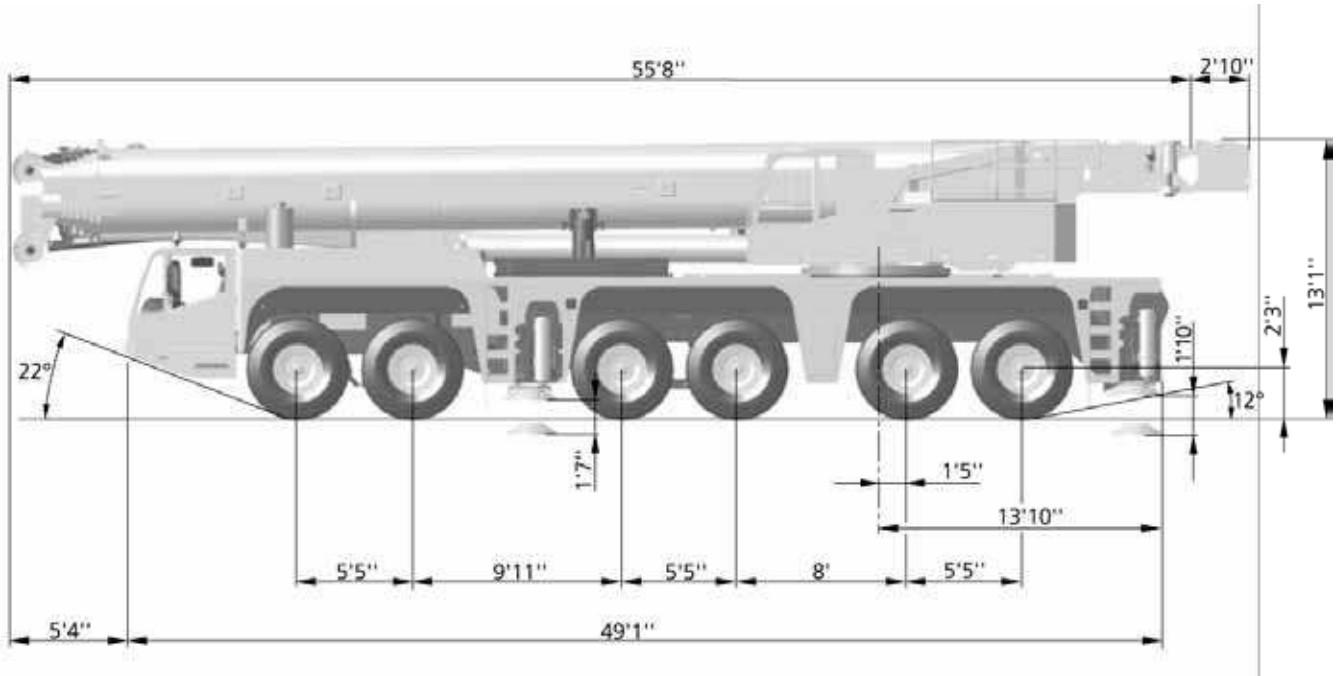
	Counterweight		Slewing
	Lifting capacities on outriggers - 360°		Boom telescoping
	Radius		Boom elevation
	Main boom		Working speeds
	Folding swing-away jib		Max. line pull
	Runner		Rope diameter
	Max. axle loads		Rope length
	Mechanism		Hook block (capacity-sheaves-rope diameter)
	Tires		Number of lines
	Hook block		Possible load of hook block
	Hoist		Weight of hook block
	Dolly		Distance head sheave axle – hook ground
	Travel speed		Number of sheaves in boom head
	Front outrigger		Supporting force
	Rear outrigger		Length of stroke (support cylinders)
	Gradeability – road		
	Gradeability – off road		

- ▶ With 262.5 ft worldwide longest main boom roadable within 26,500 lb axle load
- ▶ Worldwide unique self-rigging and roadable 328.1 ft system length
- ▶ 370.8 ft maximum system length with up to 118.1 ft extendable swing-away jib
- ▶ Most compact and agile 6-axle crane when driving
- ▶ Most compact working area (outrigger base and tail radius) in its class



DIMENSIONS

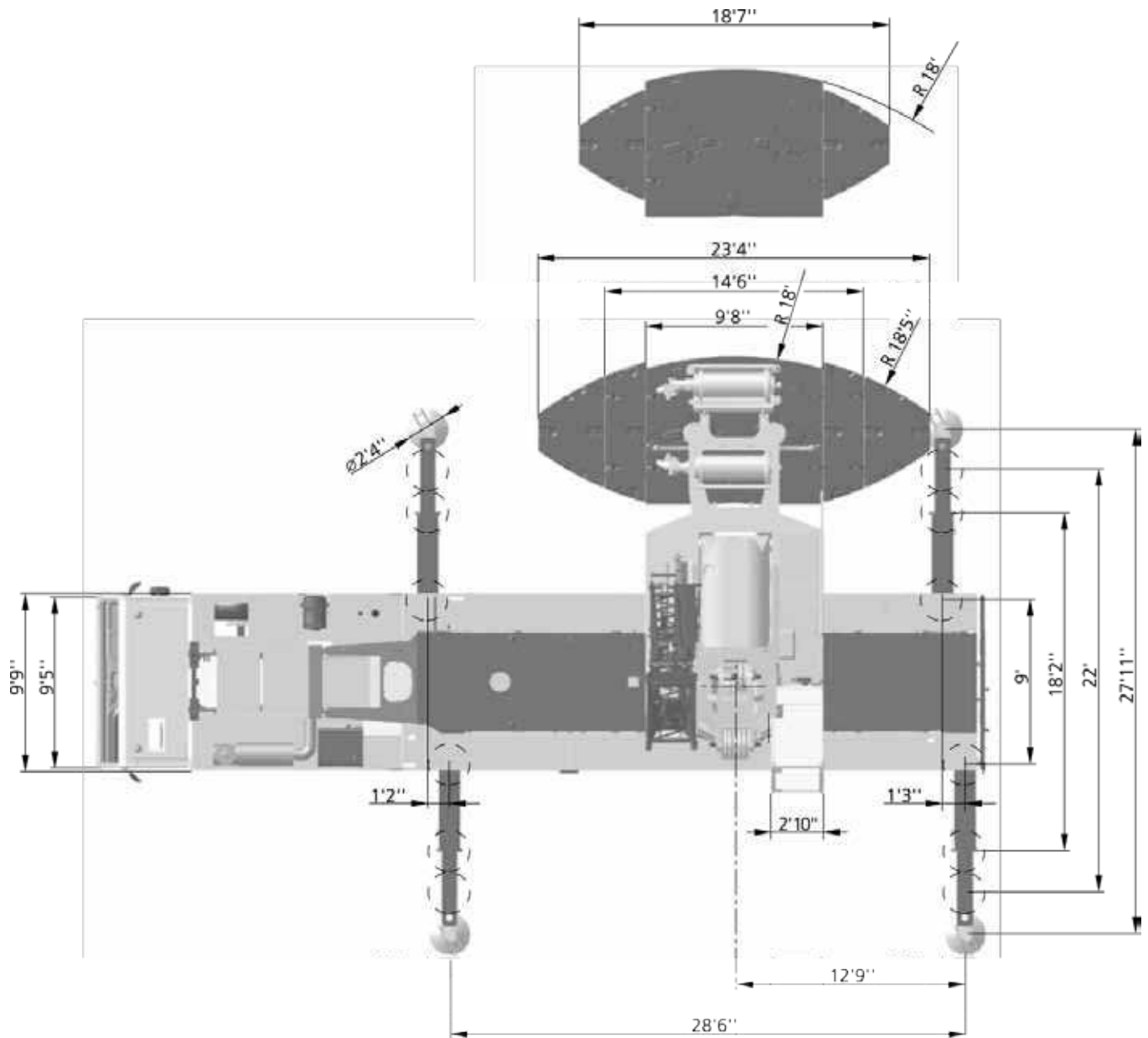
AC 250-6



All dimensions are based on 525/80R25 tyres

DIMENSIONS

AC 250-6



SPECIFICATIONS

AC 250-6

	Total								
< 26,500 lb	On request and technical verification								X
26,500 lb	158,800 lb	12 x 8 x 10	525/80R25	80-3-23	-	X	-	-	-

	1 Highway > 28 mph Axles 4-6 rigid		4* Off-wall No tail swing
	2 City < 28 mph Axles 5+6 with speed dependent steering		5* Crab steer mode All axles in the same direction
	3* Minimum turning radius < 3 mph Axles 5+6 steered automatically		6* Manually steered Axles 5+6 manually steerable

* must be activated

	249,200 lb	284,500 lb	52.8 mph ¹⁾
	19.3"	22.0"	

¹⁾ Depending on tire type, size and country specific legislation

	385 / 95 R25 14.00 R25	445 / 95 R25 16.00 R25	525 / 80 R25 20.50 R25
	49 %	44 %	44 %
	77 %	67 %	67 %

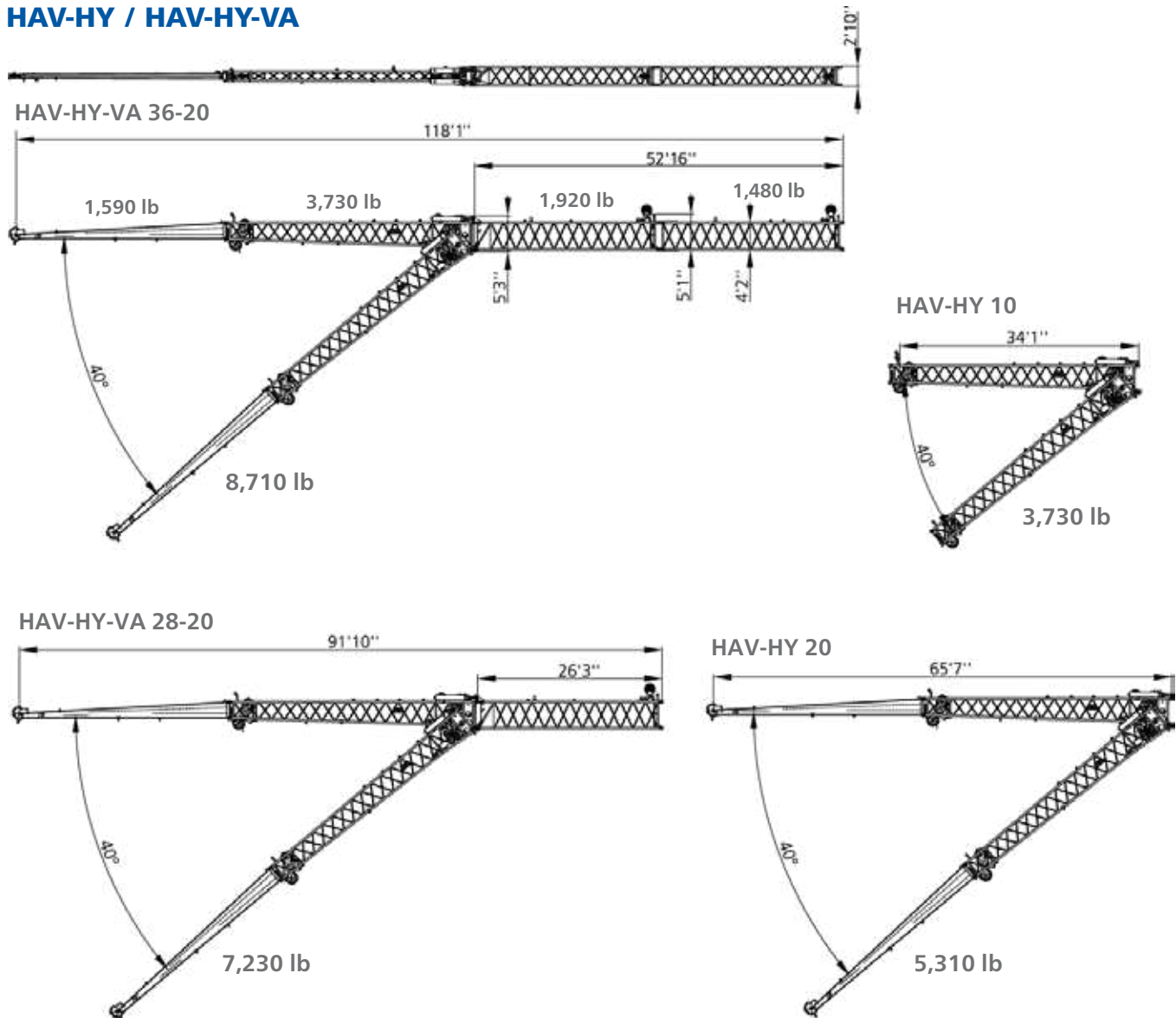
1	387.2 ft/min	26,370 lbf	0.92"	1247 ft
2	387.2 ft/min	26,370 lbf	0.92"	1247 ft
	1,0 min ⁻¹			
	570 s (47.6-262.5 ft)			
	52 s (0°-83°)			

1	26,000 lb	12-0-24	6	1,100 lb	6.6 ft
2	52,000 lb	40-1-24	6	1,650 lb	8.9 ft
3	77,600 lb	40-1-24	6	1,650 lb	8.9 ft
4	103,000 lb	80-3-23	6	2,320 lb	9.8 ft
5	127,900 lb	80-3-23	6	2,320 lb	9.8 ft
6	152,800 lb	80-3-23	6	2,320 lb	9.8 ft
7	177,300 lb	125-5-23	6	2,650 lb	9.8 ft
8	201,800 lb	125-5-23	6	2,650 lb	9.8 ft
9	225,800 lb	125-5-23	6	2,650 lb	9.8 ft
10	249,600 lb	125-5-23	6	2,650 lb	9.8 ft
11	273,200 lb	125-5-23	6	2,650 lb	9.8 ft
12	296,600 lb	160-7-23	6	3,750 lb	9.8 ft
13	319,700 lb	160-7-23	6 + S1V	3,750 lb	9.8 ft
14	341,800 lb	160-7-23	6 + S1V	3,750 lb	9.8 ft

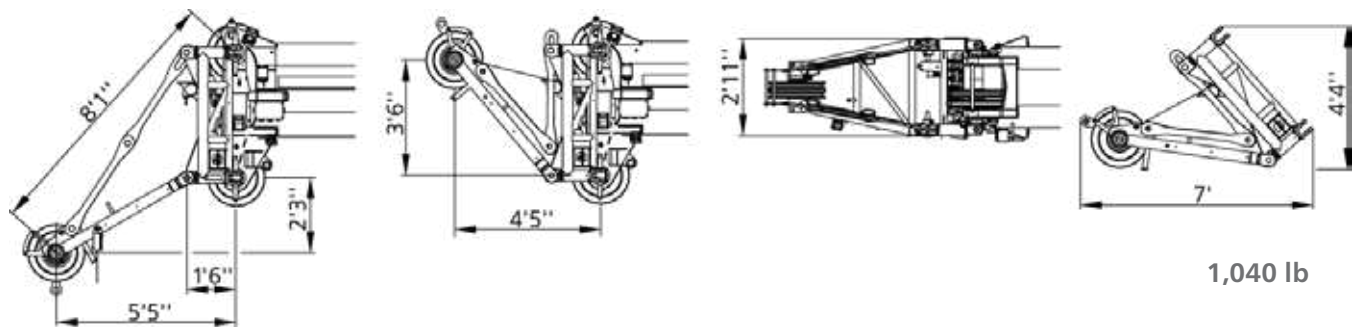
EQUIPMENT

AC 250-6

HAV-HY / HAV-HY-VA



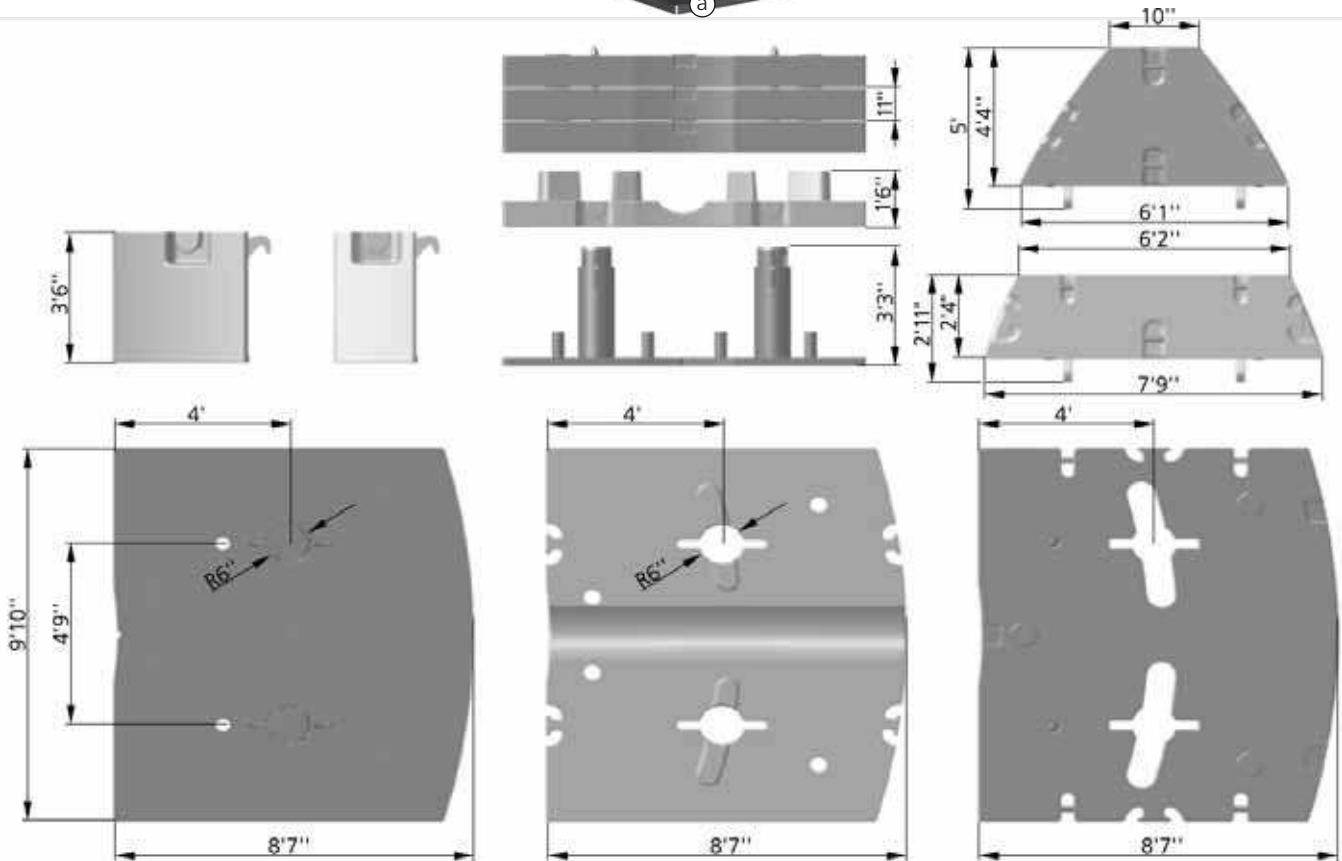
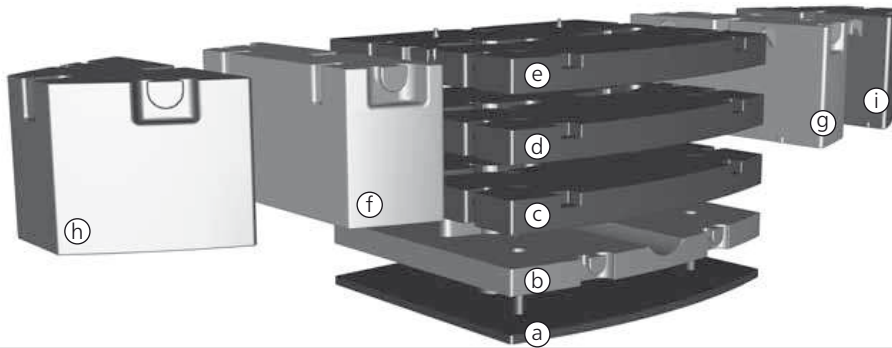
MS



COUNTERWEIGHT

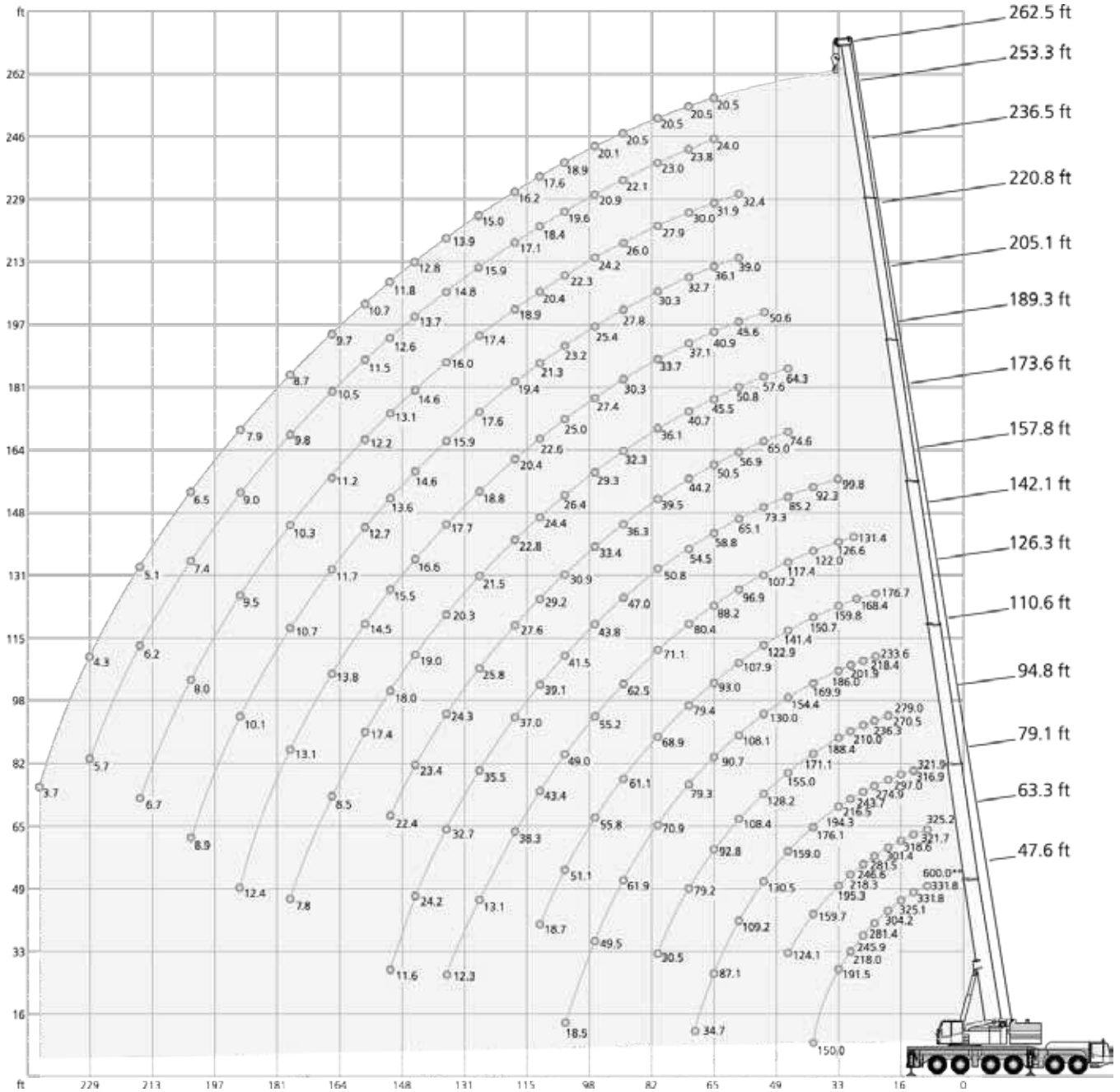
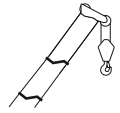
AC 250-6

Parts



Configurations

	Ⓢ11,000 lb	Ⓢ22,050 lb	Ⓢ27,340 lb	Ⓢ27,340 lb	Ⓢ27,340 lb	Ⓢ24,260 lb	Ⓢ24,260 lb	Ⓢ24,480 lb	Ⓢ24,480 lb
0 lb									
11,000 lb	X								
33,100 lb	X	X							
38,400 lb	X		X						
60,400 lb	X	X	X						
88,000 lb	X	X	X	X					
115,300 lb	X	X	X	X	X				
164,000 lb	X	X	X	X	X	X	X		
164,300 lb	X	X	X	X	X			X	X
213,000 lb	X	X	X	X	X	X	X	X	X



** capacity class

213,000 lb		28.5 ft x 27.9 ft																360°		85%	
0°		(ft)																360°			
ft		47.6	47.6	63.3	79.1	94.8	110.6	126.3	142.1	157.8	173.6	189.3	205.1	220.8	236.5	253.3	262.5	ft			
ft		1,000 lb																ft			
	600.0**	-	-	-	-	-	-	-	-	-	-	-	-	-	-	-	-	-	-		
10	434.3*	331.8	325.2	-	-	-	-	-	-	-	-	-	-	-	-	-	-	-	-		
12	400.1*	331.8	325.2	-	-	-	-	-	-	-	-	-	-	-	-	-	-	-	-		
14	331.8	331.8	321.7	321.9	-	-	-	-	-	-	-	-	-	-	-	-	-	-	-		
16	325.1	325.1	318.6	316.9	-	-	-	-	-	-	-	-	-	-	-	-	-	-	-		
18	304.2	304.2	301.4	297.0	279.0	-	-	-	-	-	-	-	-	-	-	-	-	-	-		
20	281.4	281.4	281.5	274.9	270.5	233.6	-	-	-	-	-	-	-	-	-	-	-	-	-		
24	245.9	245.9	246.6	243.7	236.3	218.4	176.7	-	-	-	-	-	-	-	-	-	-	-	-		
28	218.0	218.0	218.3	216.5	210.0	201.9	168.4	131.4	-	-	-	-	-	-	-	-	-	-	-		
32	191.5	191.5	195.3	194.3	188.4	186.0	159.8	126.6	99.8	-	-	-	-	-	-	-	-	-	-		
36	150.0	150.0	177.1	176.1	171.1	169.9	150.7	122.0	92.3	-	-	-	-	-	-	-	-	-	-		
40	-	-	159.7	159.0	155.0	154.4	141.4	117.4	85.2	74.6	64.3	-	-	-	-	-	-	-	-		
48	-	-	124.1	130.5	128.2	130.0	122.9	107.2	73.3	65.0	57.6	50.6	-	-	-	-	-	-	-		
56	-	-	-	109.2	108.4	108.1	107.9	96.9	65.1	56.9	50.8	45.6	39.0	32.4	-	-	-	-	-		
64	-	-	-	87.1	92.8	90.7	93.0	88.2	58.8	50.5	45.5	40.9	36.1	31.9	24.0	20.5	-	-	-		
72	-	-	-	34.0	79.2	79.3	79.4	80.4	54.5	44.2	40.7	37.1	32.7	30.0	23.8	20.5	-	-	-		
80	-	-	-	-	30.5	70.9	68.9	71.1	50.8	39.5	36.1	33.7	30.3	27.9	23.0	20.5	-	-	-		
88	-	-	-	-	-	61.9	61.1	62.5	47.0	36.3	32.3	30.3	27.8	26.0	22.1	20.5	-	-	-		
96	-	-	-	-	-	49.5	55.8	55.2	43.8	33.4	29.3	27.4	25.4	24.2	20.9	20.1	-	-	-		
104	-	-	-	-	-	18.5	51.1	49.0	41.5	30.9	26.4	25.0	23.2	22.3	19.6	18.9	-	-	-		
112	-	-	-	-	-	-	18.7	43.4	39.1	29.2	24.4	22.6	21.3	20.4	18.4	17.6	-	-	-		
120	-	-	-	-	-	-	-	38.3	37.0	27.6	22.8	20.4	19.4	18.9	17.1	16.2	-	-	-		
128	-	-	-	-	-	-	-	13.1	35.5	25.8	21.5	18.8	17.6	17.4	15.9	15.0	-	-	-		
136	-	-	-	-	-	-	-	12.3	32.7	24.3	20.3	17.7	15.9	16.0	14.8	13.9	-	-	-		
144	-	-	-	-	-	-	-	-	24.2	23.4	19.0	16.6	14.6	14.6	13.7	12.8	-	-	-		
152	-	-	-	-	-	-	-	-	11.6	22.4	18.0	15.5	13.6	13.1	12.6	11.8	-	-	-		
160	-	-	-	-	-	-	-	-	-	-	17.4	14.5	12.7	12.2	11.5	10.7	-	-	-		
168	-	-	-	-	-	-	-	-	-	-	8.5	13.8	11.7	11.2	10.5	9.7	-	-	-		
176	-	-	-	-	-	-	-	-	-	-	7.8	13.1	10.7	10.3	9.8	8.7	-	-	-		
184	-	-	-	-	-	-	-	-	-	-	-	12.4	10.1	9.5	9.0	7.9	-	-	-		
192	-	-	-	-	-	-	-	-	-	-	-	-	9.6	8.7	8.2	7.1	-	-	-		
200	-	-	-	-	-	-	-	-	-	-	-	-	8.9	8.0	7.4	6.5	-	-	-		
208	-	-	-	-	-	-	-	-	-	-	-	-	-	7.3	6.7	5.8	-	-	-		
216	-	-	-	-	-	-	-	-	-	-	-	-	-	6.7	6.2	5.1	-	-	-		
224	-	-	-	-	-	-	-	-	-	-	-	-	-	-	5.7	4.7	-	-	-		
232	-	-	-	-	-	-	-	-	-	-	-	-	-	-	-	4.3	-	-	-		
240	-	-	-	-	-	-	-	-	-	-	-	-	-	-	-	3.7	-	-	-		

* with special attachment

** capacity class

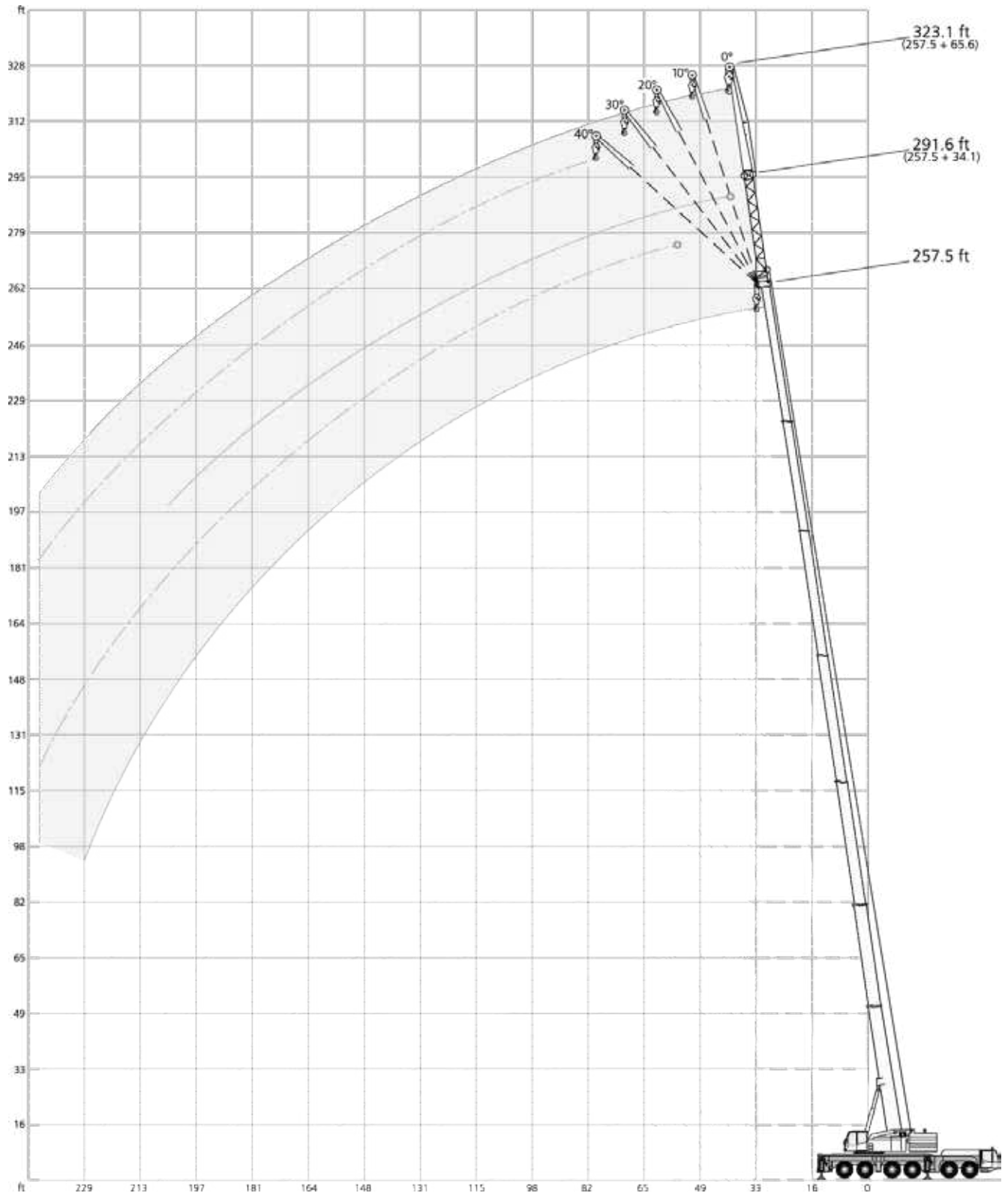
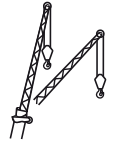
☰ 115,300 lb		📏 28.5 ft x 27.9 ft										360°				85%			
📏		(ft)																📏	
ft		47.6	63.3	79.1	94.8	110.6	126.3	142.1	157.8	173.6	189.3	205.1	220.8	236.5	253.3	262.5	ft		
		1,000 lb																	
10		331.8	325.2	-	-	-	-	-	-	-	-	-	-	-	-	-	-	10	
12		331.8	325.2	-	-	-	-	-	-	-	-	-	-	-	-	-	-	12	
14		331.8	321.7	321.9	-	-	-	-	-	-	-	-	-	-	-	-	-	14	
16		316.8	313.6	311.9	-	-	-	-	-	-	-	-	-	-	-	-	-	16	
18		294.3	294.3	291.0	278.5	-	-	-	-	-	-	-	-	-	-	-	-	18	
20		272.7	272.7	271.6	269.5	233.6	-	-	-	-	-	-	-	-	-	-	-	20	
24		237.1	237.3	236.1	234.7	218.4	176.7	-	-	-	-	-	-	-	-	-	-	24	
28		202.7	203.5	202.2	199.7	198.2	168.4	131.4	-	-	-	-	-	-	-	-	-	28	
32		172.1	175.1	171.8	172.6	171.6	159.8	126.6	99.8	-	-	-	-	-	-	-	-	32	
36		140.0	153.1	152.3	151.8	149.7	145.8	122.0	92.3	-	-	-	-	-	-	-	-	36	
40		-	133.1	133.1	131.7	131.2	130.3	117.2	85.2	74.6	64.3	-	-	-	-	-	-	40	
48		-	102.9	100.5	103.6	101.6	102.3	101.4	73.3	65.0	57.6	50.6	-	-	-	-	-	48	
56		-	-	81.4	80.8	83.1	81.9	79.4	65.1	56.9	50.8	45.6	39.0	32.4	-	-	-	56	
64		-	-	67.2	67.9	67.9	65.9	63.5	58.8	50.5	45.5	40.9	36.1	31.9	24.0	20.5	-	64	
72		-	-	34.0	56.9	56.0	54.0	52.1	53.7	44.2	40.7	37.1	32.7	30.0	23.8	20.5	-	72	
80		-	-	-	30.5	47.1	45.2	47.1	45.1	39.2	36.1	33.7	30.3	27.9	23.0	20.5	-	80	
88		-	-	-	-	40.2	40.9	40.2	38.0	36.3	32.1	30.3	27.8	26.0	22.1	20.5	-	88	
96		-	-	-	-	34.7	36.5	34.6	32.4	33.0	28.4	27.4	25.4	24.2	20.9	20.1	-	96	
104		-	-	-	-	18.5	31.8	30.1	29.1	28.8	26.3	23.8	23.2	22.3	19.6	18.9	-	104	
112		-	-	-	-	-	18.7	26.0	27.1	24.7	24.3	22.0	21.0	20.4	18.4	17.6	-	112	
120		-	-	-	-	-	-	23.7	23.7	21.5	21.5	20.3	18.8	18.5	17.1	16.2	-	120	
128		-	-	-	-	-	-	13.1	20.7	20.1	18.5	18.3	17.1	15.9	15.8	15.0	-	128	
136		-	-	-	-	-	-	12.3	18.0	18.1	16.6	15.8	14.7	13.2	13.8	13.1	-	136	
144		-	-	-	-	-	-	-	16.4	15.8	15.3	13.7	12.4	10.9	11.6	10.9	-	144	
152		-	-	-	-	-	-	-	11.6	13.9	13.4	12.1	10.5	9.8	9.4	8.8	-	152	
160		-	-	-	-	-	-	-	-	-	11.6	10.4	8.8	8.8	7.6	7.1	-	160	
168		-	-	-	-	-	-	-	-	-	8.5	9.2	7.5	7.3	6.1	5.5	-	168	
176		-	-	-	-	-	-	-	-	-	7.8	8.7	6.7	5.9	4.6	4.2	-	176	
184		-	-	-	-	-	-	-	-	-	-	7.6	5.9	4.6	3.4	-	-	184	
192		-	-	-	-	-	-	-	-	-	-	-	5.1	-	-	-	-	192	
200		-	-	-	-	-	-	-	-	-	-	-	4.0	-	-	-	-	200	

33,100 lb		28.5 ft x 27.9 ft														360°		85%		
		(ft)																		
		47.6	63.3	79.1	94.8	110.6	126.3	142.1	157.8	173.6	189.3	205.1	220.8	236.5	253.3	262.5				
ft		1,000 lb														ft				
10	331.8	325.2	-	-	-	-	-	-	-	-	-	-	-	-	-	-	-	-	10	
12	331.8	325.2	-	-	-	-	-	-	-	-	-	-	-	-	-	-	-	-	12	
14	328.3	321.7	321.9	-	-	-	-	-	-	-	-	-	-	-	-	-	-	-	14	
16	308.6	307.8	306.1	-	-	-	-	-	-	-	-	-	-	-	-	-	-	-	16	
18	274.7	275.8	267.1	241.5	-	-	-	-	-	-	-	-	-	-	-	-	-	-	18	
20	240.8	243.9	230.4	211.8	199.2	-	-	-	-	-	-	-	-	-	-	-	-	-	20	
24	189.2	191.6	176.4	168.1	151.5	142.2	-	-	-	-	-	-	-	-	-	-	-	-	24	
28	138.4	146.5	141.1	131.4	127.1	115.7	104.2	-	-	-	-	-	-	-	-	-	-	-	28	
32	102.6	109.9	112.4	111.2	103.3	94.2	88.6	83.2	-	-	-	-	-	-	-	-	-	-	32	
36	81.3	90.4	93.8	92.3	86.7	78.9	77.5	70.7	-	-	-	-	-	-	-	-	-	-	36	
40	-	71.7	75.0	75.5	72.0	72.1	65.8	60.4	58.0	53.8	-	-	-	-	-	-	-	-	40	
48	-	49.6	53.3	53.5	56.3	53.7	51.7	48.5	45.7	42.7	40.9	-	-	-	-	-	-	-	48	
56	-	-	39.9	41.6	41.6	41.6	41.0	39.2	37.3	34.4	31.4	28.2	24.6	-	-	-	-	-	56	
64	-	-	31.1	32.4	33.0	32.8	32.4	31.5	29.5	28.1	26.1	23.3	20.2	18.0	16.8	-	-	-	64	
72	-	-	24.2	25.3	26.5	26.4	25.7	25.4	23.3	23.1	20.6	18.0	15.1	13.1	12.0	-	-	-	72	
80	-	-	-	20.0	21.4	21.1	20.9	20.0	18.5	18.6	16.4	13.8	11.1	9.2	8.3	-	-	-	80	
88	-	-	-	-	17.3	16.9	16.6	15.9	14.3	14.8	12.8	10.4	7.9	6.1	5.0	-	-	-	88	
96	-	-	-	-	13.8	13.5	13.2	12.4	10.9	11.5	9.9	7.6	5.2	3.4	-	-	-	-	96	
104	-	-	-	-	11.1	10.7	10.5	9.6	8.2	8.7	7.4	5.1	2.9	-	-	-	-	-	104	
112	-	-	-	-	-	8.5	8.1	7.4	5.8	6.5	5.0	-	-	-	-	-	-	-	112	
120	-	-	-	-	-	-	6.2	5.5	4.0	4.5	-	-	-	-	-	-	-	-	120	
128	-	-	-	-	-	-	4.6	3.9	-	2.9	-	-	-	-	-	-	-	-	128	
136	-	-	-	-	-	-	3.2	-	-	-	-	-	-	-	-	-	-	-	136	

0 lb		28.5 ft x 27.9 ft														360°		85%		
		(ft)																		
		47.6	63.3	79.1	94.8	110.6	126.3	142.1	157.8	173.6	189.3	205.1	220.8	236.5	253.3	262.5				
ft		1,000 lb														ft				
10	331.8	325.2	-	-	-	-	-	-	-	-	-	-	-	-	-	-	-	-	10	
12	331.8	325.2	-	-	-	-	-	-	-	-	-	-	-	-	-	-	-	-	12	
14	321.2	312.2	272.1	-	-	-	-	-	-	-	-	-	-	-	-	-	-	-	14	
16	283.7	261.3	222.9	-	-	-	-	-	-	-	-	-	-	-	-	-	-	-	16	
18	238.4	213.2	185.4	162.6	-	-	-	-	-	-	-	-	-	-	-	-	-	-	18	
20	193.8	174.7	154.2	142.7	125.0	-	-	-	-	-	-	-	-	-	-	-	-	-	20	
24	121.0	123.7	116.6	104.7	94.0	87.3	-	-	-	-	-	-	-	-	-	-	-	-	24	
28	78.5	89.7	86.4	80.2	76.4	69.6	64.3	-	-	-	-	-	-	-	-	-	-	-	28	
32	53.0	63.3	68.2	66.2	61.7	58.1	53.9	48.6	-	-	-	-	-	-	-	-	-	-	32	
36	39.1	48.1	53.7	53.9	52.4	48.5	45.2	40.7	-	-	-	-	-	-	-	-	-	-	36	
40	-	35.9	41.8	43.3	43.0	40.1	37.5	33.8	30.6	29.3	-	-	-	-	-	-	-	-	40	
48	-	22.6	27.6	29.0	30.4	29.2	27.2	24.3	21.8	21.0	17.9	-	-	-	-	-	-	-	48	
56	-	-	19.1	20.3	21.6	21.4	20.0	17.6	15.5	15.0	12.4	-	-	-	-	-	-	-	56	
64	-	-	13.4	14.5	15.8	15.6	14.6	12.8	10.8	10.5	8.1	-	-	-	-	-	-	-	64	
72	-	-	9.6	10.4	11.6	11.3	10.7	9.1	7.1	7.1	4.7	-	-	-	-	-	-	-	72	
80	-	-	-	7.5	8.6	8.4	7.6	6.2	4.2	4.2	-	-	-	-	-	-	-	-	80	
88	-	-	-	-	6.0	5.6	5.2	3.7	-	-	-	-	-	-	-	-	-	-	88	
96	-	-	-	-	3.7	3.4	3.1	-	-	-	-	-	-	-	-	-	-	-	96	

HAV-HY

AC 250-6



213,000 lb		28.5 ft x 27.9 ft										360°										85%			
47.6 ft		34.1 ft					65.6 ft					157.8 ft		34.1 ft					65.6 ft						
ft		0°	10°	20°	30°	40°	0°	10°	20°	30°	40°	ft		0°	10°	20°	30°	40°	0°	10°	20°	30°	40°		
1,000 lb												1,000 lb													
10		52.0	-	-	-	-	-	-	-	-	-	40		35.3	-	-	-	-	16.3	-	-	-	-		
12		52.0	-	-	-	-	-	-	-	-	-	48		33.1	30.7	-	-	-	15.7	-	-	-	-		
14		52.0	-	-	-	-	-	-	-	-	-	56		30.7	28.9	25.0	21.4	-	15.0	14.0	-	-	-		
16		52.0	-	-	-	-	-	-	-	-	-	64		28.1	27.1	23.6	20.4	18.2	14.4	13.3	-	-	-		
18		50.7	43.7	-	-	-	23.3	-	-	-	-	72		25.4	25.0	22.3	19.6	17.6	13.9	12.8	11.7	-	-		
20		49.1	41.3	-	-	-	22.9	-	-	-	-	80		23.0	22.6	21.2	18.9	17.3	13.1	12.3	11.2	10.5	-		
24		45.0	37.1	30.9	-	-	22.2	-	-	-	-	88		20.8	20.5	19.9	18.3	16.9	12.6	11.7	10.8	10.1	9.4		
28		40.9	34.0	28.6	24.6	-	21.3	19.9	-	-	-	96		19.2	18.9	18.7	17.5	16.5	12.1	11.2	10.4	9.8	9.1		
32		37.5	30.9	26.6	23.2	20.7	20.3	18.6	-	-	-	104		17.6	17.4	17.4	16.6	15.8	11.5	10.6	10.2	9.5	9.0		
36		34.1	28.6	24.8	21.9	19.8	19.3	17.4	-	-	-	112		16.0	16.0	16.0	15.6	15.2	11.2	10.3	9.7	9.2	8.8		
40		30.9	26.6	23.2	20.6	18.8	18.4	16.4	14.6	-	-	120		14.7	14.5	14.7	14.5	14.4	10.7	10.1	9.4	9.0	8.8		
48		25.9	22.9	20.8	18.8	17.4	16.5	14.6	13.2	12.1	-	128		13.7	13.6	13.6	13.6	13.6	10.2	9.7	9.1	8.8	8.6		
56		22.2	20.2	18.6	17.4	16.5	14.6	13.2	12.1	11.1	-	136		12.7	12.6	12.7	12.7	12.7	9.8	9.3	8.9	8.7	8.6		
64		19.2	18.0	17.2	16.5	16.1	13.1	12.1	11.2	10.3	9.8	144		11.7	11.7	11.7	11.9	11.9	9.5	9.1	8.8	8.6	8.4		
72		-	16.3	16.3	-	-	11.9	11.0	10.4	9.9	9.3	152		10.9	10.9	10.9	11.0	11.1	9.0	8.7	8.5	8.3	8.4		
80		-	-	-	-	-	10.9	10.3	9.8	9.4	9.0	160		10.2	10.2	10.2	10.3	10.4	8.5	8.3	8.1	8.1	8.3		
88		-	-	-	-	-	10.1	9.7	9.3	8.9	8.8	168		9.7	9.7	9.7	9.7	7.1	8.1	8.0	7.8	7.8	8.0		
96		-	-	-	-	-	9.4	9.2	9.0	8.8	-	176		9.1	9.1	9.1	9.1	6.7	7.6	7.6	7.5	7.5	7.6		
												184		6.0	6.0	6.0	6.2	-	7.2	7.2	7.2	7.3	7.3		
												192		-	-	-	-	-	6.7	6.7	6.8	7.0	4.8		
												200		-	-	-	-	-	6.3	6.3	6.5	6.6	4.4		
												208		-	-	-	-	-	4.0	4.0	4.0	4.0	-		
												216		-	-	-	-	-	3.6	3.8	3.8	3.8	-		

173.6 ft		34.1 ft					65.6 ft				
ft		0°	10°	20°	30°	40°	0°	10°	20°	30°	40°
1,000 lb											
48		31.5	-	-	-	-	15.1	-	-	-	-
56		29.6	28.1	-	-	-	14.5	-	-	-	-
64		27.6	26.4	23.6	20.4	18.4	14.0	12.9	-	-	-
72		25.4	24.7	22.5	19.6	17.9	13.5	12.4	-	-	-
80		23.0	22.8	21.2	19.1	17.4	12.9	11.9	11.2	10.3	-
88		20.8	20.8	19.9	18.6	17.0	12.4	11.5	10.6	10.1	9.4
96		18.9	18.9	18.7	18.0	16.6	11.8	11.0	10.2	9.8	9.1
104		17.4	17.4	17.4	17.3	16.3	11.3	10.6	10.0	9.5	8.9
112		16.0	16.0	16.0	16.2	15.4	11.0	10.1	9.7	9.2	8.8
120		14.5	14.7	14.7	14.9	14.4	10.5	9.9	9.4	9.0	8.6
128		13.1	13.2	13.3	13.6	13.4	10.2	9.6	9.0	8.7	8.5
136		12.1	12.1	12.1	12.2	12.4	9.8	9.3	8.9	8.6	8.4
144		11.1	11.3	11.3	11.3	11.3	9.5	9.1	8.6	8.4	8.4
152		10.2	10.3	10.4	10.5	10.5	9.2	8.8	8.6	8.3	8.3
160		9.2	9.4	9.4	9.6	9.6	8.4	8.4	8.3	8.2	8.2
168		8.6	8.7	8.7	8.7	8.7	7.8	7.9	7.9	8.0	8.0
176		8.0	8.0	8.0	8.0	8.0	7.2	7.4	7.4	7.6	7.6
184		7.4	7.4	7.5	7.4	7.4	6.6	6.7	6.8	7.0	7.0
192		-	-	-	-	-	6.1	6.1	6.3	6.5	6.5
200		-	-	-	-	-	5.7	5.7	5.7	6.0	6.0
208		-	-	-	-	-	5.3	5.3	5.3	5.4	5.3
216		-	-	-	-	-	4.9	4.9	4.9	4.9	4.7

189.3 ft		34.1 ft					65.6 ft				
ft		0°	10°	20°	30°	40°	0°	10°	20°	30°	40°
1,000 lb											
48		30.1	-	-	-	-	-	-	-	-	-
56		28.8	27.3	-	-	-	14.1	-	-	-	-
64		27.2	26.1	23.8	-	-	13.6	-	-	-	-
72		25.4	24.5	22.7	19.9	17.9	13.2	12.1	-	-	-
80		23.5	22.9	21.7	19.1	17.4	12.7	11.8	10.9	-	-
88		21.6	21.3	20.5	18.5	17.1	12.2	11.3	10.5	9.8	-
96		19.6	19.5	19.1	17.8	16.7	11.8	10.9	10.2	9.6	9.1
104		18.0	17.8	17.8	17.1	16.3	11.3	10.6	9.8	9.3	8.9
112		16.7	16.5	16.5	16.5	16.1	11.0	10.1	9.5	9.0	8.8
120		15.4	15.4	15.4	15.4	15.4	10.5	9.8	9.2	8.8	8.6
128		14.2	14.2	14.3	14.3	14.3	10.0	9.4	8.9	8.7	8.5
136		12.9	13.0	13.1	13.2	13.2	9.8	9.3	8.8	8.4	8.2
144		11.9	12.0	12.0	12.2	12.2	9.5	9.1	8.6	8.4	8.2
152		11.1	11.1	11.1	11.1	11.2	9.2	8.8	8.4	8.2	8.2
160		10.3	10.3	10.3	10.3	10.5	8.9	8.5	8.3	8.1	8.2
168		9.5	9.5	9.6	9.6	9.7	8.3	8.2	8.0	7.9	8.1
176		8.7	8.7	8.9	8.9	8.9	7.8	7.8	7.8	7.9	8.0
184		8.1	8.1	8.2	8.2	8.4	7.3	7.3	7.4	7.5	7.6
192		7.6	7.6	7.6	7.6	7.8	6.7	6.7	6.9	6.9	7.2
200		7.1	7.1	7.2	7.2	7.3	6.2	6.2	6.4	6.4	6.6
208		-	-	-	-	-	5.7	5.7	5.9	5.9	6.1
216		-	-	-	-	-	5.3	5.3	5.3	5.5	5.5
224		-	-	-	-	-	4.9	5.0	5.0	5.1	5.1

213,000 lb											28.5 ft x 27.9 ft											360°											85%																																																																																																																																																																																																																																																																									
205.1 ft											220.8 ft																																																																																																																																																																																																																																																																																															
34.1 ft											65.6 ft											34.1 ft											65.6 ft																																																																																																																																																																																																																																																																									
0° 10° 20° 30° 40°											0° 10° 20° 30° 40°											0° 10° 20° 30° 40°											0° 10° 20° 30° 40°																																																																																																																																																																																																																																																																									
ft											ft											ft											ft																																																																																																																																																																																																																																																																									
1,000 lb											1,000 lb											1,000 lb											1,000 lb																																																																																																																																																																																																																																																																									
56	27.2	-	-	-	-	-	-	-	-	-	64	22.7	-	-	-	-	12.6	-	-	-	-	72	22.5	22.5	-	-	-	12.1	-	-	-	-	80	22.0	21.7	21.7	19.1	17.4	11.8	11.0	-	-	-	88	21.2	20.8	20.6	18.6	17.1	11.4	10.7	10.1	-	-	96	19.7	19.6	19.5	18.2	16.8	11.0	10.3	9.8	9.1	-	-	104	18.1	18.1	18.2	17.3	16.4	10.6	10.0	9.5	8.9	-	-	112	16.4	16.7	16.7	16.3	15.6	10.3	9.7	9.2	8.8	8.4	120	15.0	15.3	15.3	15.2	14.8	10.0	9.4	9.0	8.5	8.3	128	13.9	13.9	14.1	14.1	14.0	9.6	9.1	8.7	8.3	8.2	136	12.8	13.0	13.0	13.0	13.2	9.3	8.9	8.4	8.2	8.0	144	11.9	12.0	12.0	12.2	12.2	8.8	8.6	8.2	7.9	7.9	152	10.9	10.9	11.1	11.1	11.3	8.5	8.3	8.1	7.9	7.7	160	9.8	10.0	10.1	10.2	10.3	8.0	7.9	7.8	7.6	7.6	168	8.9	9.1	9.3	9.3	9.5	7.5	7.5	7.4	7.4	7.4	176	8.3	8.5	8.5	8.5	8.5	7.1	7.1	7.1	7.1	7.1	184	7.6	7.8	7.8	7.8	7.8	6.7	6.7	6.7	6.7	6.8	192	6.9	7.1	7.1	7.1	7.1	6.3	6.3	6.3	6.3	6.5	200	6.2	6.5	6.5	6.5	6.5	5.7	5.9	5.9	6.1	6.1	208	5.7	5.9	5.9	5.9	5.9	5.2	5.4	5.5	5.6	5.7	216	5.3	5.3	5.3	5.3	5.3	4.7	4.9	5.1	5.1	5.3	224	4.8	4.8	4.8	4.9	4.8	4.3	4.3	4.6	4.6	4.8	232	-	-	-	-	-	3.9	3.9	4.0	4.1	4.3	240	-	-	-	-	-	3.4	3.4	3.5	3.7	3.7	248	-	-	-	-	-	3.0	3.1	3.1	3.3	3.2	256	-	-	-	-	-	2.6	2.9	2.9	-	-	264	-	-	-	-	-	2.4	2.5	2.5	-	-

236.5 ft																																																																																																																																																																																																																																																																							
34.1 ft											65.6 ft																																																																																																																																																																																																																																																												
0° 10° 20° 30° 40°											0° 10° 20° 30° 40°																																																																																																																																																																																																																																																												
ft											ft																																																																																																																																																																																																																																																												
1,000 lb											1,000 lb																																																																																																																																																																																																																																																												
64	19.2	-	-	-	-	-	-	-	-	-	72	19.2	-	-	-	-	11.0	-	-	-	-	80	19.2	18.9	19.0	-	-	11.0	10.5	-	-	-	88	19.2	18.6	18.9	18.6	17.1	10.7	10.3	-	-	-	96	18.9	18.4	18.3	18.0	16.8	10.4	10.0	9.3	-	-	104	17.8	17.7	17.7	17.3	16.6	10.2	9.7	9.1	8.6	-	112	16.5	16.5	16.7	16.7	16.3	9.9	9.2	8.8	8.6	8.2	120	15.3	15.4	15.4	15.6	15.2	9.6	9.0	8.6	8.3	8.1	128	14.0	14.2	14.3	14.4	14.3	9.4	8.9	8.5	8.0	7.9	136	12.8	13.0	13.1	13.2	13.2	9.1	8.7	8.2	7.9	7.8	144	11.9	12.0	12.2	12.2	12.4	8.8	8.4	8.2	7.7	7.7	152	10.9	11.1	11.1	11.3	11.4	8.5	8.1	7.9	7.7	7.5	160	10.0	10.1	10.2	10.3	10.5	8.0	7.9	7.7	7.5	7.5	168	9.0	9.2	9.3	9.5	9.7	7.5	7.5	7.5	7.4	7.4	176	8.1	8.3	8.5	8.5	8.7	6.9	7.1	7.1	7.1	7.3	184	7.4	7.5	7.7	7.7	7.9	6.5	6.6	6.7	6.7	6.9	192	6.7	6.7	6.9	6.9	7.1	6.1	6.1	6.3	6.3	6.5	200	6.0	6.0	6.2	6.2	6.5	5.5	5.7	5.9	5.9	6.1	208	5.3	5.3	5.6	5.6	5.7	5.0	5.2	5.4	5.5	5.7	216	4.7	4.7	4.9	4.9	4.9	4.4	4.7	4.9	5.1	5.3	224	4.1	4.1	4.2	4.2	4.3	3.9	4.1	4.3	4.6	4.7	232	3.6	3.6	3.6	3.6	3.8	3.4	3.6	3.8	4.0	4.0	240	3.2	3.2	3.2	3.1	3.1	3.0	3.1	3.3	3.5	3.5	248	-	-	2.7	-	-	-	-	2.7	3.0	3.0

257.5 ft																																																																																																																																																																																																																																																	
34.1 ft											65.6 ft																																																																																																																																																																																																																																						
0° 10° 20° 30° 40°											0° 10° 20° 30° 40°																																																																																																																																																																																																																																						
ft											ft																																																																																																																																																																																																																																						
1,000 lb											1,000 lb																																																																																																																																																																																																																																						
72	13.2	-	-	-	-	-	-	-	-	-	80	13.2	13.2	-	-	-	7.7	-	-	-	-	88	13.2	13.2	13.2	-	-	7.7	7.5	-	-	-	96	13.2	13.2	13.2	13.2	13.2	7.7	7.5	-	-	-	104	13.2	13.2	13.2	13.2	13.2	7.7	7.5	7.5	-	-	112	12.8	13.2	13.2	13.2	13.2	7.7	7.5	7.5	7.5	-	120	12.2	12.5	12.8	12.9	13.1	7.7	7.5	7.5	7.5	7.5	128	11.3	11.6	12.0	12.2	12.5	7.6	7.5	7.5	7.5	7.5	136	10.7	10.8	11.2	11.4	11.5	7.5	7.3	7.5	7.5	7.3	144	10.0	10.0	10.4	10.4	10.6	7.3	7.3	7.3	7.3	7.3	152	9.2	9.2	9.4	9.6	9.8	7.2	7.0	7.2	7.0	7.1	160	8.4	8.6	8.6	8.8	8.9	7.1	6.8	7.0	6.8	7.0	168	7.8	7.8	8.0	8.0	8.2	6.8	6.7	6.7	6.7	6.7	176	7.0	7.2	7.2	7.4	7.4	6.3	6.4	6.4	6.4	6.4	184	6.3	6.5	6.5	6.7	6.7	5.7	5.9	6.0	6.2	6.2	192	5.6	5.8	5.8	6.0	6.0	5.2	5.4	5.6	5.8	5.8	200	4.9	5.1	5.1	5.4	5.4	4.6	4.9	5.1	5.3	5.3	208	4.3	4.5	4.5	4.8	4.8	4.1	4.3	4.5	4.8	4.8	216	3.8	4.0	4.0	4.2	4.2	3.6	3.8	4.0	4.2	4.2	224	3.2	3.5	3.5	3.6	3.6	3.0	3.2	3.5	3.7	3.7	232	-	-	-	2.9	2.9	-	-	3.0	3.1	3.2	240	-	-	-	2.4	2.4	-	-	2.6	2.6	2.8

213,000 lb		28.5 ft x 27.9 ft										360°										85%									
47.6 ft		26.3 ft 0°					52.5 ft 0°					157.8 ft		26.3 ft 0°					52.5 ft 0°												
		65.6 ft					65.6 ft							65.6 ft					65.6 ft												
		0°	10°	20°	30°	40°	0°	10°	20°	30°	40°			0°	10°	20°	30°	40°	0°	10°	20°	30°	40°								
ft		1,000 lb																													
20	20.2	-	-	-	-	-	-	-	-	-	-	-	-	-	-	-	-	-	-	-	-	-									
24	19.7	-	-	-	-	-	-	-	-	-	-	-	-	-	-	-	-	-	-	-	-	-									
28	19.2	-	-	-	-	-	16.2	-	-	-	-	-	-	-	-	-	-	-	-	-	-	-									
32	18.6	-	-	-	-	-	15.4	-	-	-	-	-	-	-	-	-	-	-	-	-	-	-									
36	17.9	17.2	-	-	-	-	14.6	-	-	-	-	-	-	-	-	-	-	-	-	-	-	-									
40	17.1	16.4	-	-	-	-	13.8	13.5	-	-	-	-	-	-	-	-	-	-	-	-	-	-									
48	15.4	14.6	13.8	-	-	-	12.2	12.0	-	-	-	-	-	-	-	-	-	-	-	-	-	-									
56	13.7	13.2	12.4	11.6	-	-	10.9	10.7	10.3	-	-	-	-	-	-	-	-	-	-	-	-	-									
64	12.4	11.7	11.2	10.7	10.0	-	9.7	9.5	9.3	9.0	-	-	-	-	-	-	-	-	-	-	-	-									
72	11.3	10.8	10.2	9.9	9.5	-	8.6	8.4	8.4	8.2	8.0	-	-	-	-	-	-	-	-	-	-	-									
80	10.0	9.8	9.4	9.2	9.0	-	7.8	7.6	7.4	7.4	7.2	-	-	-	-	-	-	-	-	-	-	-									
88	9.2	8.9	8.8	8.5	8.4	-	7.0	6.9	6.8	6.7	6.7	-	-	-	-	-	-	-	-	-	-	-									
96	8.4	8.3	8.1	7.9	7.9	-	6.3	6.2	6.1	6.1	6.1	-	-	-	-	-	-	-	-	-	-	-									
104	7.8	7.6	7.6	7.3	7.3	-	5.8	5.6	5.6	5.6	5.6	-	-	-	-	-	-	-	-	-	-	-									
112	7.2	7.0	7.0	7.0	7.0	-	5.3	5.1	5.0	5.1	5.1	-	-	-	-	-	-	-	-	-	-	-									
120	6.7	6.8	6.8	6.8	-	-	4.7	4.7	4.6	4.7	4.7	-	-	-	-	-	-	-	-	-	-	-									
128	-	-	-	-	-	-	4.3	4.3	4.3	4.3	4.3	-	-	-	-	-	-	-	-	-	-	-									
136	-	-	-	-	-	-	4.0	4.0	4.0	4.0	4.0	-	-	-	-	-	-	-	-	-	-	-									
144	-	-	-	-	-	-	3.8	3.8	3.8	3.8	4.0	-	-	-	-	-	-	-	-	-	-	-									

173.6 ft		26.3 ft 0°					52.5 ft 0°				
		65.6 ft					65.6 ft				
		0°	10°	20°	30°	40°	0°	10°	20°	30°	40°
ft		1,000 lb									
56	12.1	-	-	-	-	-	-	-	-	-	-
64	12.0	-	-	-	-	-	-	-	-	-	-
72	11.5	-	-	-	-	-	8.2	-	-	-	-
80	10.9	10.3	9.7	-	-	-	7.7	7.4	-	-	-
88	10.4	9.8	9.3	-	-	-	7.3	7.0	6.7	-	-
96	9.9	9.4	8.9	8.5	-	-	6.9	6.6	6.3	-	-
104	9.5	8.9	8.4	8.2	7.7	-	6.5	6.2	6.0	5.8	-
112	9.0	8.6	8.1	7.7	7.5	-	6.2	5.9	5.7	5.5	5.3
120	8.5	8.3	7.9	7.4	7.2	-	5.8	5.6	5.2	5.2	5.0
128	8.3	7.8	7.5	7.2	7.1	-	5.4	5.2	5.0	5.0	4.9
136	7.8	7.6	7.1	6.9	6.9	-	5.1	4.9	4.7	4.7	4.7
144	7.5	7.3	6.8	6.6	6.6	-	4.9	4.6	4.4	4.4	4.4
152	7.2	7.0	6.6	6.6	6.4	-	4.6	4.4	4.2	4.2	4.2
160	6.9	6.7	6.5	6.3	6.3	-	4.3	4.1	4.1	4.0	4.0
168	6.4	6.5	6.3	6.1	6.1	-	4.1	3.9	3.9	3.8	3.9
176	6.0	6.2	6.0	6.0	6.0	-	3.8	3.8	3.8	3.6	3.8
184	5.6	5.7	5.7	5.7	5.8	-	3.6	3.5	3.5	3.4	3.6
192	5.2	5.2	5.4	5.4	5.6	-	3.5	3.3	3.3	3.3	3.5
200	4.6	4.8	4.9	5.0	5.1	-	3.2	3.1	3.1	3.1	3.4
208	4.1	4.3	4.4	4.5	4.5	-	2.9	2.9	2.9	2.9	3.2
216	3.6	3.8	4.0	4.0	4.0	-	2.7	2.7	2.7	2.7	2.9
224	3.3	3.4	3.6	3.6	3.6	-	2.4	2.4	2.5	2.6	-
232	3.0	3.0	3.2	3.2	-	-	-	-	-	-	-
240	2.7	2.7	2.8	2.8	-	-	-	-	-	-	-

189.3 ft		26.3 ft 0°					52.5 ft 0°				
		65.6 ft					65.6 ft				
		0°	10°	20°	30°	40°	0°	10°	20°	30°	40°
ft		1,000 lb									
64	11.5	-	-	-	-	-	-	-	-	-	-
72	11.2	-	-	-	-	-	-	-	-	-	-
80	10.7	10.1	-	-	-	-	7.5	7.2	-	-	-
88	10.2	9.7	9.2	-	-	-	7.1	6.9	-	-	-
96	9.8	9.2	8.8	8.3	-	-	6.7	6.5	6.3	-	-
104	9.3	8.9	8.4	8.0	7.7	-	6.4	6.2	5.8	-	-
112	9.0	8.6	7.9	7.7	7.5	-	5.9	5.7	5.5	5.3	5.3
120	8.5	8.1	7.7	7.4	7.2	-	5.7	5.4	5.2	5.1	5.0
128	8.2	7.8	7.4	7.2	6.9	-	5.4	5.2	5.0	5.0	4.7
136	7.8	7.4	7.1	6.9	6.8	-	5.1	4.9	4.7	4.7	4.5
144	7.5	7.1	6.8	6.6	6.6	-	4.9	4.6	4.4	4.4	4.4
152	7.2	6.8	6.6	6.4	6.4	-	4.6	4.4	4.2	4.2	4.2
160	7.0	6.6	6.4	6.3	6.3	-	4.3	4.1	4.1	4.0	4.0
168	6.6	6.5	6.3	6.1	6.1	-	4.1	3.9	3.9	3.8	3.8
176	6.2	6.2	6.0	6.0	6.0	-	4.0	3.8	3.8	3.6	3.6
184	5.8	5.9	5.8	5.7	5.8	-	3.7	3.6	3.5	3.4	3.4
192	5.4	5.6	5.6	5.5	5.7	-	3.5	3.5	3.3	3.3	3.3
200	5.0	5.2	5.2	5.3	5.4	-	3.2	3.2	3.1	3.1	3.3
208	4.6	4.8	4.8	5.0	5.1	-	3.0	3.0	3.0	3.0	3.2
216	4.2	4.2	4.4	4.4	4.7	-	2.9	2.9	2.9	2.9	3.1
224	3.8	3.8	4.0	4.0	4.1	-	2.6	2.6	2.6	2.7	2.8
232	3.4	3.4	3.6	3.6	3.6	-	-	-	-	-	2.6
240	3.2	3.2	3.2	3.2	3.2	-	-	-	-	-	2.3
248	2.8	2.9	2.9	2.9	2.9	-	-	-	-	-	-



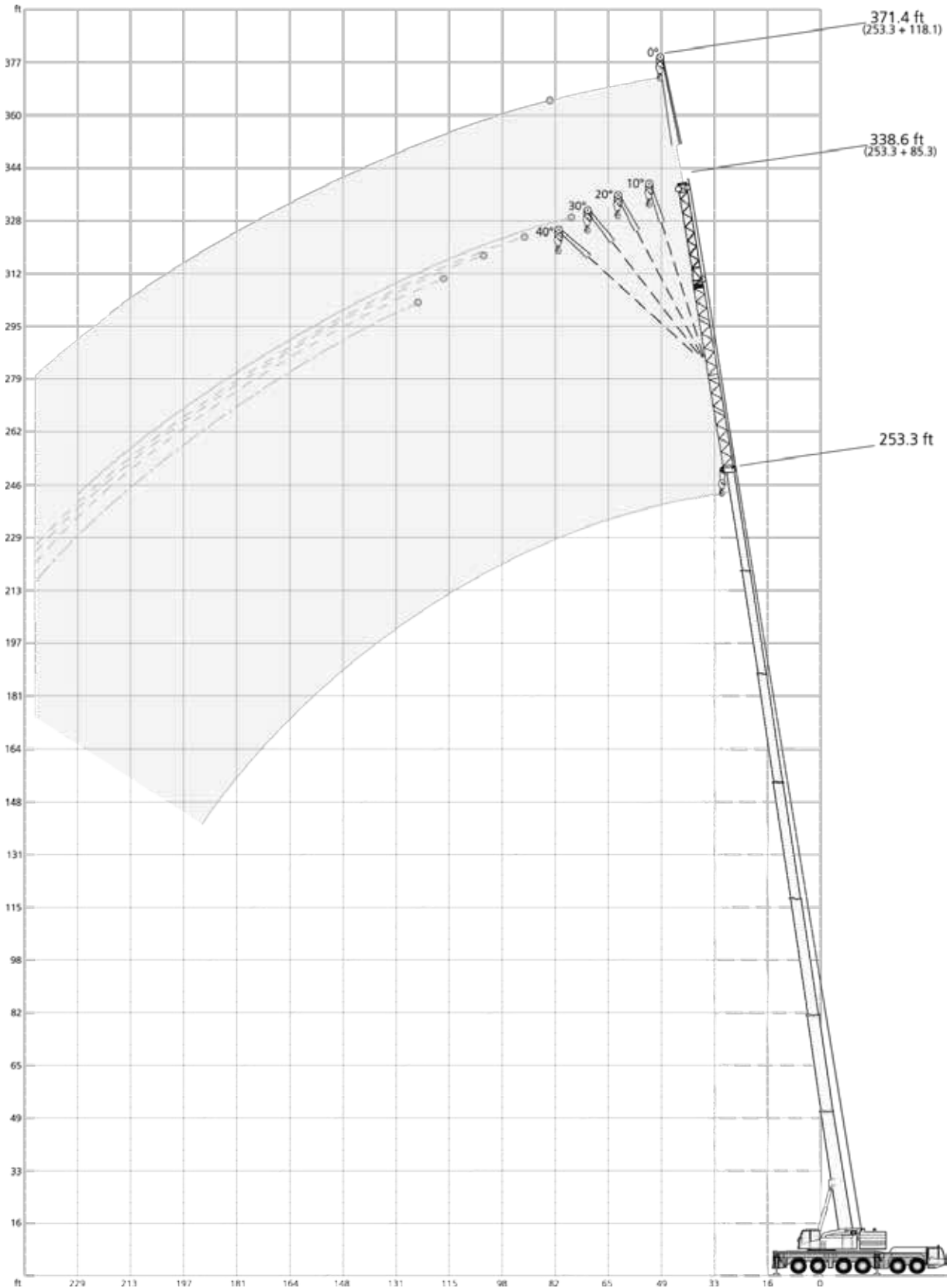
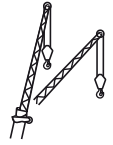
213,000 lb											28.5 ft x 27.9 ft											360°											85%																																																																																																																																																																																																																
205.1 ft											220.8 ft																																																																																																																																																																																																																																						
26.3 ft											52.5 ft											26.3 ft											52.5 ft																																																																																																																																																																																																																
0°											0°											0°											0°																																																																																																																																																																																																																
65.6 ft											65.6 ft											65.6 ft											65.6 ft																																																																																																																																																																																																																
0° 10° 20° 30° 40°											0° 10° 20° 30° 40°											0° 10° 20° 30° 40°											0° 10° 20° 30° 40°																																																																																																																																																																																																																
ft											1,000 lb											ft											1,000 lb																																																																																																																																																																																																																
72	10.4	-	-	-	-	-	-	-	-	-	80	10.1	9.8	-	-	-	6.8	-	-	-	-	88	9.8	9.4	-	-	-	6.7	6.5	-	-	-	96	9.4	9.0	8.5	-	-	6.5	6.3	-	-	-	104	9.1	8.6	8.2	8.0	-	6.2	6.0	5.8	-	-	112	8.8	8.3	7.9	7.7	7.3	5.7	5.7	5.5	5.3	5.1	120	8.3	7.9	7.7	7.2	7.2	5.4	5.2	5.2	5.0	4.9	128	8.0	7.6	7.4	6.9	6.9	5.2	5.0	4.7	4.7	4.7	136	7.8	7.3	7.1	6.8	6.7	4.9	4.9	4.6	4.5	4.5	144	7.3	7.1	6.8	6.6	6.6	4.6	4.6	4.4	4.2	4.2	152	7.0	6.8	6.6	6.4	6.4	4.4	4.4	4.2	4.2	4.2	160	6.4	6.4	6.3	6.3	6.2	4.1	4.1	4.0	3.9	3.9	168	6.0	6.0	6.0	6.0	6.0	3.9	3.8	3.8	3.7	3.7	176	5.6	5.6	5.6	5.6	5.8	3.8	3.6	3.6	3.5	3.5	184	5.2	5.3	5.3	5.3	5.4	3.5	3.4	3.4	3.4	3.4	192	4.8	5.0	5.0	5.0	5.0	3.3	3.3	3.3	3.3	3.3	200	4.4	4.6	4.6	4.6	4.7	3.1	3.1	3.1	3.1	3.1	208	3.9	4.1	4.2	4.2	4.4	2.9	2.9	2.9	2.9	3.0	216	3.3	3.6	3.8	3.8	4.0	2.7	2.7	2.7	2.7	2.9	224	2.9	3.2	3.2	3.4	3.5	-	2.4	2.5	2.5	2.7	232	-	-	-	-	2.9	2.9	-	-	-	-	240	-	-	-	-	2.4	2.4	-	-	-	-
80	9.0	-	-	-	-	-	-	-	-	-	88	8.9	8.8	-	-	-	5.9	-	-	-	-	96	8.8	8.7	-	-	-	5.7	5.7	-	-	-	104	8.6	8.4	8.0	-	-	5.5	5.7	-	-	-	112	8.4	8.1	7.7	7.5	7.3	5.5	5.5	5.3	5.1	-	120	8.1	7.7	7.4	7.2	7.0	5.3	5.2	5.0	4.8	4.8	128	7.8	7.4	7.2	6.9	6.7	5.2	5.0	4.7	4.5	4.5	136	7.6	7.1	6.9	6.7	6.6	4.9	4.7	4.5	4.4	4.2	144	7.3	7.1	6.6	6.4	6.4	4.6	4.4	4.2	4.2	4.2	152	7.0	6.8	6.6	6.4	6.2	4.4	4.2	4.2	4.0	3.9	160	6.5	6.5	6.3	6.2	6.1	4.1	4.0	3.9	3.9	3.7	168	6.2	6.2	6.0	6.0	5.9	3.8	3.8	3.7	3.7	3.7	176	5.8	5.8	5.8	5.8	5.8	3.6	3.6	3.5	3.5	3.5	184	5.4	5.4	5.4	5.5	5.5	3.4	3.4	3.4	3.3	3.4	192	5.0	5.0	5.0	5.2	5.2	3.2	3.2	3.2	3.1	3.3	200	4.6	4.6	4.7	4.8	5.0	3.0	3.0	3.0	2.9	3.1	208	4.2	4.3	4.4	4.5	4.6	2.8	2.8	2.8	2.8	2.9	216	3.8	4.0	4.0	4.2	4.2	2.7	2.7	2.7	2.7	2.7	224	3.4	3.6	3.6	3.8	3.8	2.4	2.5	2.5	2.5	2.5	232	3.0	3.2	3.2	3.4	3.4	-	-	-	-	2.4	240	2.6	2.8	2.8	3.0	3.0	-	-	-	-	2.3											

236.5 ft																																																																																																																																																																																																																																				
26.3 ft											52.5 ft																																																																																																																																																																																																																									
0°											0°																																																																																																																																																																																																																									
65.6 ft											65.6 ft																																																																																																																																																																																																																									
0° 10° 20° 30° 40°											0° 10° 20° 30° 40°																																																																																																																																																																																																																									
ft											1,000 lb																																																																																																																																																																																																																									
80	7.7	-	-	-	-	-	-	-	-	-	88	7.7	-	-	-	4.6	-	-	-	-	96	7.7	7.5	-	-	-	4.6	-	-	-	104	7.7	7.5	-	-	-	4.6	4.6	-	-	-	112	7.7	7.3	7.3	7.1	-	4.6	4.6	4.4	-	-	120	7.7	7.3	7.1	7.0	6.8	4.6	4.4	4.4	4.2	-	128	7.4	7.2	6.9	6.7	6.6	4.6	4.4	4.3	4.2	4.2	136	7.1	6.9	6.7	6.5	6.5	4.5	4.4	4.2	4.0	4.2	144	6.8	6.8	6.4	6.4	6.2	4.4	4.2	4.0	4.0	4.0	152	6.8	6.6	6.4	6.1	6.1	4.2	4.0	3.9	3.7	3.7	160	6.5	6.3	6.1	6.0	6.0	3.9	3.9	3.7	3.7	3.7	168	6.2	6.0	5.9	5.9	5.9	3.7	3.7	3.6	3.5	3.5	176	5.8	5.8	5.8	5.8	5.8	3.5	3.5	3.3	3.3	3.3	184	5.4	5.4	5.5	5.5	5.6	3.3	3.3	3.2	3.2	3.2	192	5.0	5.0	5.2	5.2	5.4	3.1	3.1	3.1	3.1	3.1	200	4.4	4.6	4.8	4.8	5.0	2.9	2.9	2.9	2.9	2.9	208	4.0	4.2	4.4	4.4	4.6	2.7	2.7	2.7	2.7	2.8	216	3.6	3.8	4.0	4.0	4.2	2.4	2.4	2.4	2.4	2.7	224	3.2	3.4	3.6	3.6	3.8	-	-	-	-	2.4	232	-	3.0	3.1	3.2	3.4	-	-	-	-	-	240	-	2.6	2.6	2.8	2.8	-	-	-	-	-

253.3 ft																																																																																																																																																																																																																																				
26.3 ft											52.5 ft																																																																																																																																																																																																																									
0°											0°																																																																																																																																																																																																																									
65.6 ft											65.6 ft																																																																																																																																																																																																																									
0° 10° 20° 30° 40°											0° 10° 20° 30° 40°																																																																																																																																																																																																																									
ft											1,000 lb																																																																																																																																																																																																																									
80	5.3	-	-	-	-	-	-	-	-	-	88	5.3	-	-	-	2.6	-	-	-	-	96	5.3	5.1	-	-	-	2.6	-	-	-	104	5.3	5.1	-	-	-	2.6	-	-	-	-	112	5.3	5.1	5.1	-	-	2.6	-	-	-	-	120	5.3	5.1	5.1	5.1	-	2.6	-	-	-	-	128	5.3	5.1	5.1	5.1	5.1	2.6	-	-	-	-	136	5.3	5.1	5.1	5.1	5.1	2.6	-	-	-	-	144	5.3	5.1	5.1	5.1	5.1	2.6	-	-	-	-	152	5.3	5.1	5.1	5.1	5.1	2.6	-	-	-	-	160	5.1	5.1	5.0	5.1	5.1	2.6	-	-	-	-	168	5.1	5.0	4.9	5.0	5.0	2.6	-	-	-	-	176	5.1	4.9	4.9	4.9	4.9	2.6	-	-	-	-	184	4.7	4.9	4.7	4.7	4.7	2.6	-	-	-	-	192	4.3	4.7	4.6	4.6	4.6	2.6	-	-	-	-	200	3.9	4.2	4.3	4.5	4.5	2.6	-	-	-	-	208	3.5	3.7	4.0	4.2	4.2	-	-	-	-	-	216	3.1	3.3	3.6	3.8	3.8	-	-	-	-	-	224	2.6	2.9	3.0	3.2	3.4	-	-	-	-	-	232	-	-	-	-	2.9	-	-	-	-	-	240	-	-	-	-	2.4	-	-	-	-	-

HAV-HY-VA

AC 250-6



☰ 213,000 lb		📏 28.5 ft x 27.9 ft														360°		85%	
📏		(ft)														📏			
ft		47.6	63.3	79.1	94.8	110.6	126.3	142.1	157.8	173.6	189.3	205.1	220.8	236.5	262.5	ft			
		1,000 lb																	
10	95.0	-	-	-	-	-	-	-	-	-	-	-	-	-	-	-	10		
12	95.0	-	-	-	-	-	-	-	-	-	-	-	-	-	-	-	12		
14	95.0	95.0	-	-	-	-	-	-	-	-	-	-	-	-	-	-	14		
16	95.0	95.0	-	-	-	-	-	-	-	-	-	-	-	-	-	-	16		
18	95.0	95.0	95.0	-	-	-	-	-	-	-	-	-	-	-	-	-	18		
20	95.0	95.0	95.0	95.0	-	-	-	-	-	-	-	-	-	-	-	-	20		
24	95.0	95.0	95.0	95.0	95.0	-	-	-	-	-	-	-	-	-	-	-	24		
28	95.0	95.0	95.0	95.0	95.0	95.0	-	-	-	-	-	-	-	-	-	-	28		
32	95.0	95.0	95.0	95.0	95.0	95.0	95.0	95.0	-	-	-	-	-	-	-	-	32		
36	95.0	95.0	95.0	95.0	95.0	95.0	95.0	95.0	-	-	-	-	-	-	-	-	36		
40	-	95.0	95.0	95.0	95.0	95.0	95.0	94.8	80.9	70.9	-	-	-	-	-	-	40		
48	-	95.0	95.0	95.0	95.0	95.0	95.0	91.5	70.3	62.1	54.8	-	-	-	-	-	48		
56	-	89.6	95.0	95.0	95.0	95.0	95.0	85.7	61.9	54.6	49.0	42.1	-	-	-	-	56		
64	-	-	91.2	91.2	90.9	91.0	80.1	54.6	48.7	43.8	38.1	34.3	29.5	-	-	-	64		
72	-	-	72.3	80.9	79.0	80.7	74.4	48.0	43.3	39.6	34.5	31.4	28.5	18.3	-	-	72		
80	-	-	-	69.4	68.4	70.0	68.6	44.9	38.3	35.5	31.7	28.8	26.6	18.3	-	-	80		
88	-	-	-	25.8	62.1	61.3	62.6	42.0	34.8	31.5	28.8	26.6	24.7	18.3	-	-	88		
96	-	-	-	-	54.9	53.9	55.8	39.0	31.3	28.6	25.9	24.5	23.0	18.3	-	-	96		
104	-	-	-	-	41.8	49.6	49.5	36.8	28.9	25.9	23.6	22.3	21.4	17.7	-	-	104		
112	-	-	-	-	-	45.6	43.8	35.0	27.0	23.2	21.5	20.4	19.5	16.7	-	-	112		
120	-	-	-	-	-	16.3	39.1	33.3	25.6	20.8	19.6	18.8	18.0	15.4	-	-	120		
128	-	-	-	-	-	-	33.7	31.6	24.1	19.6	17.8	17.2	16.6	14.3	-	-	128		
136	-	-	-	-	-	-	11.2	30.6	22.6	18.5	16.6	15.6	15.3	13.2	-	-	136		
144	-	-	-	-	-	-	10.4	28.8	21.6	17.5	15.7	13.8	13.9	12.2	-	-	144		
152	-	-	-	-	-	-	-	10.7	20.6	16.4	14.7	12.9	12.6	11.1	-	-	152		
160	-	-	-	-	-	-	-	-	19.8	15.6	13.8	12.0	11.6	10.1	-	-	160		
168	-	-	-	-	-	-	-	-	-	14.9	12.9	11.1	10.6	9.2	-	-	168		
176	-	-	-	-	-	-	-	-	-	14.4	12.2	10.3	9.8	8.1	-	-	176		
184	-	-	-	-	-	-	-	-	-	-	11.6	9.5	9.0	7.4	-	-	184		
192	-	-	-	-	-	-	-	-	-	-	-	8.7	8.2	6.7	-	-	192		
200	-	-	-	-	-	-	-	-	-	-	-	8.2	7.4	6.0	-	-	200		
208	-	-	-	-	-	-	-	-	-	-	-	3.9	6.7	5.3	-	-	208		
216	-	-	-	-	-	-	-	-	-	-	-	3.3	6.2	4.7	-	-	216		
224	-	-	-	-	-	-	-	-	-	-	-	-	3.6	4.1	-	-	224		
232	-	-	-	-	-	-	-	-	-	-	-	-	-	3.6	-	-	232		
240	-	-	-	-	-	-	-	-	-	-	-	-	-	3.2	-	-	240		

☰ 115,300 lb		📏 28.5 ft x 27.9 ft														360°		85%	
📐		(ft)														📐			
ft		47.6	63.3	79.1	94.8	110.6	126.3	142.1	157.8	173.6	189.3	205.1	220.8	236.5	262.5	ft			
		1,000 lb																	
10	95.0	-	-	-	-	-	-	-	-	-	-	-	-	-	-	-	10		
12	95.0	-	-	-	-	-	-	-	-	-	-	-	-	-	-	-	12		
14	95.0	95.0	-	-	-	-	-	-	-	-	-	-	-	-	-	-	14		
16	95.0	95.0	-	-	-	-	-	-	-	-	-	-	-	-	-	-	16		
18	95.0	95.0	95.0	-	-	-	-	-	-	-	-	-	-	-	-	-	18		
20	95.0	95.0	95.0	95.0	-	-	-	-	-	-	-	-	-	-	-	-	20		
24	95.0	95.0	95.0	95.0	95.0	-	-	-	-	-	-	-	-	-	-	-	24		
28	95.0	95.0	95.0	95.0	95.0	95.0	-	-	-	-	-	-	-	-	-	-	28		
32	95.0	95.0	95.0	95.0	95.0	95.0	95.0	95.0	-	-	-	-	-	-	-	-	32		
36	95.0	95.0	95.0	95.0	95.0	95.0	95.0	95.0	-	-	-	-	-	-	-	-	36		
40	-	95.0	95.0	95.0	95.0	95.0	95.0	94.8	80.9	70.9	-	-	-	-	-	-	40		
48	-	93.6	93.0	93.5	93.1	92.3	91.5	70.3	62.1	54.8	-	-	-	-	-	-	48		
56	-	82.2	80.9	82.3	80.8	80.5	80.3	61.9	54.6	49.0	42.1	-	-	-	-	-	56		
64	-	-	67.1	66.4	68.2	67.0	64.4	54.6	48.7	43.8	38.1	34.3	29.5	-	-	-	64		
72	-	-	56.1	57.7	56.7	54.9	52.5	48.0	43.3	39.6	34.5	31.4	28.5	18.3	-	-	72		
80	-	-	-	48.6	47.8	46.0	43.6	44.4	38.2	35.5	31.7	28.8	26.6	18.3	-	-	80		
88	-	-	-	25.8	40.7	38.9	39.3	38.3	33.5	31.5	28.8	26.6	24.7	18.3	-	-	88		
96	-	-	-	-	35.1	34.1	34.9	32.5	31.1	27.5	25.9	24.5	23.0	18.3	-	-	96		
104	-	-	-	-	30.3	31.6	30.1	27.7	28.4	24.5	23.1	22.3	21.4	17.7	-	-	104		
112	-	-	-	-	-	28.0	26.0	25.5	24.5	22.4	20.9	20.1	19.5	16.7	-	-	112		
120	-	-	-	-	-	16.3	22.6	23.3	20.8	20.6	19.5	18.0	17.7	15.4	-	-	120		
128	-	-	-	-	-	-	20.6	20.3	18.4	18.1	17.5	16.3	15.0	14.2	-	-	128		
136	-	-	-	-	-	-	11.2	17.7	17.2	15.7	14.9	14.0	12.3	12.2	-	-	136		
144	-	-	-	-	-	-	10.4	15.5	15.3	14.6	13.1	11.6	10.2	9.8	-	-	144		
152	-	-	-	-	-	-	-	10.7	13.4	12.8	11.4	9.7	9.3	7.9	-	-	152		
160	-	-	-	-	-	-	-	-	11.6	11.0	9.6	7.9	7.9	6.1	-	-	160		
168	-	-	-	-	-	-	-	-	-	9.4	8.6	6.9	6.3	4.6	-	-	168		
176	-	-	-	-	-	-	-	-	-	7.9	8.0	6.3	4.8	3.1	-	-	176		
184	-	-	-	-	-	-	-	-	-	-	6.9	5.3	3.6	-	-	-	184		
192	-	-	-	-	-	-	-	-	-	-	-	4.2	-	-	-	-	192		
200	-	-	-	-	-	-	-	-	-	-	-	-	3.1	-	-	-	200		

☰ 33,100 lb		📏 28.5 ft x 27.9 ft														360°		85%	
📏		(ft)														📏			
ft		47.6	63.3	79.1	94.8	110.6	126.3	142.1	157.8	173.6	189.3	205.1	220.8	236.5	262.5	ft			
ft		1,000 lb														ft			
10	95.0	-	-	-	-	-	-	-	-	-	-	-	-	-	-	-	10		
12	95.0	-	-	-	-	-	-	-	-	-	-	-	-	-	-	-	12		
14	95.0	95.0	-	-	-	-	-	-	-	-	-	-	-	-	-	-	14		
16	95.0	95.0	-	-	-	-	-	-	-	-	-	-	-	-	-	-	16		
18	95.0	95.0	95.0	-	-	-	-	-	-	-	-	-	-	-	-	-	18		
20	95.0	95.0	95.0	95.0	-	-	-	-	-	-	-	-	-	-	-	-	20		
24	95.0	95.0	95.0	95.0	95.0	-	-	-	-	-	-	-	-	-	-	-	24		
28	95.0	95.0	95.0	95.0	95.0	95.0	-	-	-	-	-	-	-	-	-	-	28		
32	95.0	95.0	95.0	95.0	95.0	95.0	92.4	85.4	-	-	-	-	-	-	-	-	32		
36	82.7	85.2	85.7	87.5	85.0	80.0	73.2	-	-	-	-	-	-	-	-	-	36		
40	-	73.4	77.2	77.6	72.9	66.4	66.0	59.2	55.2	-	-	-	-	-	-	-	40		
48	-	51.9	54.5	54.7	53.3	54.1	49.1	47.4	43.5	41.2	-	-	-	-	-	-	48		
56	-	37.5	40.5	41.7	42.2	41.1	40.6	37.7	35.8	33.5	30.5	-	-	-	-	-	56		
64	-	-	31.4	32.4	32.6	33.0	32.0	31.1	28.8	26.6	24.9	22.2	19.1	-	-	-	64		
72	-	-	24.8	25.9	26.2	26.3	25.7	24.6	22.8	22.2	19.5	16.9	14.0	10.9	-	-	72		
80	-	-	-	20.4	21.3	21.1	20.7	19.6	18.1	17.7	15.3	12.7	10.0	7.0	-	-	80		
88	-	-	-	16.1	17.0	16.8	16.4	15.3	13.9	13.9	11.7	9.3	6.7	3.9	-	-	88		
96	-	-	-	-	13.7	13.3	12.9	11.8	10.6	10.7	8.8	6.5	4.0	-	-	-	96		
104	-	-	-	-	10.9	10.5	10.0	8.9	7.8	8.0	6.3	4.0	-	-	-	-	104		
112	-	-	-	-	-	8.3	7.8	6.7	5.4	5.6	4.1	-	-	-	-	-	112		
120	-	-	-	-	-	6.2	5.8	4.8	3.6	3.7	-	-	-	-	-	-	120		
128	-	-	-	-	-	-	4.2	3.1	-	-	-	-	-	-	-	-	128		
136	-	-	-	-	-	-	2.7	-	-	-	-	-	-	-	-	-	136		

☰ 0 lb		📏 28.5 ft x 27.9 ft														360°		85%	
📏		(ft)														📏			
ft		47.6	63.3	79.1	94.8	110.6	126.3	142.1	157.8	173.6	189.3	205.1	220.8	236.5	262.5	ft			
ft		1,000 lb														ft			
10	95.0	-	-	-	-	-	-	-	-	-	-	-	-	-	-	-	10		
12	95.0	-	-	-	-	-	-	-	-	-	-	-	-	-	-	-	12		
14	95.0	95.0	-	-	-	-	-	-	-	-	-	-	-	-	-	-	14		
16	95.0	95.0	-	-	-	-	-	-	-	-	-	-	-	-	-	-	16		
18	95.0	95.0	95.0	-	-	-	-	-	-	-	-	-	-	-	-	-	18		
20	95.0	95.0	95.0	95.0	-	-	-	-	-	-	-	-	-	-	-	-	20		
24	95.0	95.0	95.0	92.9	89.7	-	-	-	-	-	-	-	-	-	-	-	24		
28	83.4	87.9	86.2	79.6	74.2	68.0	-	-	-	-	-	-	-	-	-	-	28		
32	59.1	67.2	68.0	65.0	61.0	56.9	53.0	-	-	-	-	-	-	-	-	-	32		
36	44.1	51.5	53.8	54.6	50.6	48.4	44.7	-	-	-	-	-	-	-	-	-	36		
40	-	38.7	43.3	44.6	43.0	40.1	37.1	33.4	30.1	-	-	-	-	-	-	-	40		
48	-	24.6	28.9	30.0	30.7	28.9	26.8	23.8	21.3	20.1	-	-	-	-	-	-	48		
56	-	16.2	20.1	21.1	22.0	21.2	19.7	17.1	14.9	14.1	-	-	-	-	-	-	56		
64	-	-	14.3	15.1	15.9	15.6	14.4	12.2	10.1	9.6	-	-	-	-	-	-	64		
72	-	-	10.0	10.9	11.8	11.3	10.2	8.2	6.5	6.0	-	-	-	-	-	-	72		
80	-	-	-	7.7	8.6	8.2	7.1	5.3	-	-	-	-	-	-	-	-	80		
88	-	-	-	4.9	5.9	5.5	4.6	-	-	-	-	-	-	-	-	-	88		
96	-	-	-	-	3.5	3.1	-	-	-	-	-	-	-	-	-	-	96		

Ratings are in compliance with ASME B30.5.
Lifting capacities do not exceed 85 % of tipping load.

Weight of hook blocks and slings is part of the load, and is to be deducted from the capacity ratings.
Consult operation manual for further details.

Note: Data published herein is intended as a guide only and shall not be construed to warrant applicability for lifting purposes.
Crane operation is subject to the computer charts and operation manual both supplied with the crane.

Basic machine

Equipment carrier

Engine 430-4	MTU; Output 430 kW (585 HP), torque 2750 Nm, certifications in accordance with TIER 4F, CARB; Exhaust system made of stainless steel with SCR catalytic converter.
Fuel tank 630-95	166 gallons Diesel, 25 gallons Ad-Blue (in carrier) + 6.6 gallons Ad-Blue (in superstructure); Supplies Diesel for carrier and crane (13 gallons Diesel buffer tank at superstructure).
Transmission AS16INT	ZF AS-Tronic; Automatic transmission with integrated hydraulic retarder brake, 16 forward speeds and 2 reverse; 2-stage transfer case with switchable off-road gear and switchable longitudinal lock.
Axles 12 x 8 x 10	12 x 8 x 10; 6 axles, axles 2, 4-6 driven and equipped with selectable transverse lock, axles 4 and 5 with selectable longitudinal lock; Axles 1-3, 5+6 steered, axle 4 liftable.
Suspension	Hydropneumatic suspension with axle load compensation; Hydraulically lockable; Manual or automatic levelling alternatively.
Steering	Dual circuit hydro semiblock steering with emergency steering pump; Active rear axle steering with different steering programs.
Brakes	Pneumatic dual circuit service brake, acting on all wheels; Disc brakes; ABS; Hydraulic retarder integrated into transmission as wearless, sustained-action brake; Additional exhaust brake and constant choke valve; Spring-loaded parking brake.
Wheels 38595 170F	385/95R25 (14.00R25); Steel rims 9,5-25/1,7ET70; 170F.
Cab 2880	Type 9.45 ft; Adjustable driver seat with seat heating, armrests and pneumatic suspension; Co-driver's seat; Steering wheel height and tilt adjustable; Power door windows; Tinted glass; Radio-preparation.
Heating engine-dependent	Engine-dependent warm water heating with 12 kW heating power.
Aircondition	Aircondition for carrier cab with 7 kW cooling power.
Drive lights	With low beam, upper beam, daytime running lights.
Cruise control	Automatic speed control including automatic brake control.
Central lubrication	Central auto lube for all lubrication points at carrier.
Electronic immobiliser system	Prevents uncontrolled carrier mobilisation; Incl. 2 electronic keys and 4 ignition keys.
Pneumatic tire filling plug	Pneumatic tire filling plug for self-filling of the wheels.
Contour safety marking	Continuous reflective strips on the sides of the chassis and on the rear.

Equipment superstructure

Engine 210-4	MTU; Output 210 kW (286 HP), torque 1150 Nm, certifications in accordance with TIER 4F, CARB; Exhaust system made of stainless steel with SCR catalytic converter.
Telescopic boom HA80	47.6 ft - 262.5 ft; Single cylinder telescoping system, automatic telescoping; Attachments for all equipment and extensions; 6 sheaves integrated in boom head for max. capacity of 296,600 lb.
Boom luffing	1 luffing cylinder with automatic lowering brake valve.
Rotary drive	1 slewing gear unit with spring-loaded multi-disc brake; Different operating modes selectable.
H1	Hoist with spring-loaded multi-disc brake; Twist prevention for rope; Resolver (hoist rotation indicator).
Counterweight 52	115,300 lb, 5 pieces (a-e); Automatic rigging system; Expandable to max. 213,000 lb; Max. 33,100 lb can be carried on board as standard.
Outriggers	H-4-Point design; 4 outriggers telescopic; Vertical and horizontal movement fully hydraulic; Manual or automatic levelling alternatively; 4 outrigger bases.
Outrigger load indicator	Displayed in LMI crane cab.
Drive	Hydraulic system with power control; Hydraulic oil cooler.
Control system	Enabling 4 simultaneous working movements; Electric pilot controls via 2 two-axis joysticks; Different control modes selectable for hydraulic circuits.
Operator aids	IC-1, with integrated electronic load moment indicator in accordance with EN13000; Color display; Displaying of current operating conditions, load charts, fault indicator; Signal lights indicating LMI-load; Crane data logger.
Working range limiter	Displaying and programmability of the work range limits by IC-1.
Hook height indication	Displaying and programmability of the hook height by IC-1.
Cab 088	Type 2.87 ft; Tilt infinitely variable 20°; Seat heating; Sliding windows in door and rear; Fold-out front window; Extendable side pedestal, foldable front pedestal; Handrails; Tinted safety glass; Pull-down sun visor and light curtains; Radio-preparation.
Heating engine-dependent	Engine-dependent warm water heating with 12 kW heating power.
Auxiliary heating engine independent	Auxiliary, engine independent Diesel heating system with 5 kW heating power; With timer; Switchable between engine block and carrier cab.
Aircondition	Aircondition in crane cab with 7 kW cooling power.
Anemometer	Removable, to be used with all extensions.

Additional equipment

Carrier

Engine 440-3b	MTU (Mercedes); Output 440 kW (598 HP), torque 2800 Nm, certifications in accordance with EURO MOT 3b, TIER 4i, CARB; MTU (Mercedes) exhaust system made of stainless steel with SCR catalytic converter.
Fuel tank 630-95	166 gallons Diesel, 25 gallons Ad-Blue (in carrier) + 11 gallons Ad-Blue (in superstructure); Supplies Diesel for carrier and crane (13 gallons Diesel buffer tank at crane).
Additional fuel tank	Additional fuel tank à 79 gallons, for total 245 gallons Diesel or alternatives (no RME / Biodiesel).

Superstructure

Engine 210-3b	MTU (Mercedes); Output 210 kW (286 HP), torque 1120 Nm, certifications in accordance with EURO MOT 3b, TIER 4i, CARB; MTU (Mercedes) exhaust system made of stainless steel with SCR catalytic converter.
Quick connection HA3	Hydraulic bolt extractors and hydraulic and electric quick couplings for fast (dis-) assembly; Incl. transport storage for luffing cylinder.
S1 Heavy lift attachment, stage 1	1 additional sheave, dis-/connectable; For total 7 sheaves at boom head; Max. capacity 341,800 lb.
2. hoist (H2)	2. hoist; Spring-loaded multi-disc brake; Resolver (hoist rotation indicator); Incl. quick couplings and transport storage; Self-rigging; Enables 2-hook operation with all extensions.
Additional counterweight 44	97,500 lb; Side weights f-i; For max. 213,000 lb.

Handling

Remote control	Control of superstructure movements via wireless remote control.
Outrigger basis monitoring	Individual monitoring of horizontal stroke; Deviation warning in crane cab.
IC-1 Plus	Smart crane control system enabling higher lifting capacities especially over outriggers. Enables safe use of the full capacity of the crane even in asymmetric outrigger configurations. Outriggers can be positioned independently. Capacity precalculation for +/- 30° slewing angle and radius area. Provided with graphical lift planning application. In-cab lift simulation.

Extensions

HAV-HY20	34.1 ft / 65.6 ft; Double folding swing-away jib; Diesel-hydraulic offset, up to 40°; 1-sheave head; Incl. transport storage; Includes HAV-HY10; Operation with HA or VA.
VA16	26.3 ft / 52.5 ft; Variable telescopic boom extension; 2 pieces; Includes VA8; Operation with HAV-HY.
MS (runner)	5.4 ft; Assembly jib with fixed angle; 2-sheaved for max. capacity 103,000 lb; Incl. transport storage at boom head.
Swing-away rooster sheave	1 sheave; Incl. transport storage; For single-reeving operation with elevated hook height.

Hook Blocks

Hook block 160-7-23-D-1700	160-7-23-D (3,750 lb); Hook block with ramshorn hook; white with red signal stripes.
Hook block 125-5-23-D-1200	125-5-23-D (2,650 lb); Hook block with ramshorn hook; white with red signal stripes.
Hook block 80-3-23-D-1050	80-3-23-D (2,320 lb); Hook block with ramshorn hook; white with red signal stripes.
Hook block 40-1-24-D-750	40-1-24-D (1,650 lb); Hook block with ramshorn hook; white with red signal stripes.
Hook 12-0V-E-500	12-0V-E (1,100 lb); Single hook with vertical swivel; red.

Further additional equipment on request!

Weight data may deviate from posted values based on road / travel configuration, equipment configuration, and component weight tolerances.

Effective Date: January 2017.

Product specifications and prices are subject to change without notice or obligation. The photographs and/or drawings in this document are for illustrative purposes only. Refer to the appropriate Operator's Manual for instructions on the proper use of this equipment. Failure to follow the corresponding Operator's Manual when using our equipment or to otherwise act responsibly may result in serious injury or death. The only warranty applicable to our equipment is the standard written warranty applicable to the particular product and sale and Terex makes no other warranty, express or implied.

Products and services listed may be trademarks, service marks or trade-names of Terex Corporation and/or its subsidiaries in the USA and other countries. All rights are reserved. Terex and Demag are trademarks owned or licensed by Terex Corporation or its subsidiaries.

Copyright Terex Cranes 2017



Terex Cranes
Global Marketing
Dinglerstraße 24 · 66482 Zweibrücken / Germany
Phone +49 (0) 6332 830
Email: info.cranes@terex.com

www.terex.com/cranes