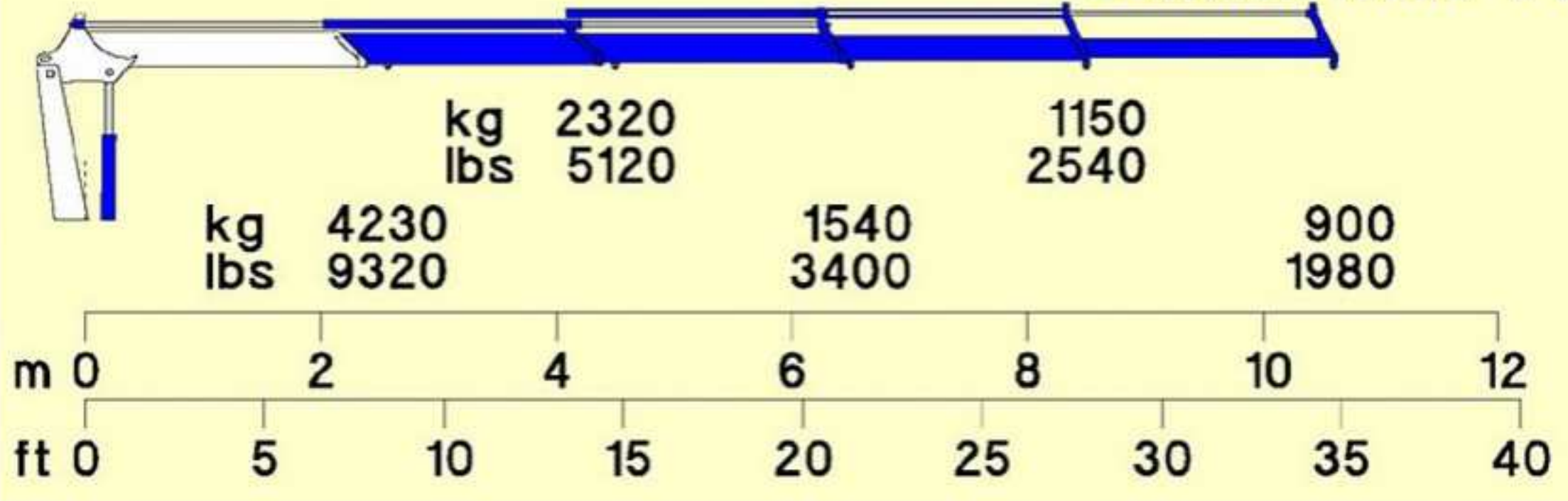


GORMAGH 13500 T4



Technical specifications	Metric system	Imperial Measurement
Static moment at the turret pin	13100 (daN/m)	94771 (lbs/ft)
Hyd. boom length	10600 (mm)	34'9" (in)
Length	900 (mm)	2'11" (in)
Width	2350 (mm)	7'9" (in)
Height	2350 (mm)	7'9" (in)
Weight (without oil and fitting)	1870 (kg)	4123 (lbs)
Lifting capacity	4230 (kg)	9320 (lbs)
Boom length with manual extensions	(mm)	(in)
Slew torque	1750 (daN/m)	12628(lbs/ft)
Slewing speed	360 - 32 (° - sec)	360 - 32 (° - sec)
Outriggers extension	1140 + 1200 (mm)	3'9" + 3'11" (in)
Outriggers width	4476 (mm)	14'8" (in)
Pump delivery	30 (lit/min)	7,93
Pressure	280 (bar)	3982 (Psi)
Oil tank capacity	60 (lit)	15,8 (us gal)

Standard equipment



Options

