

CORMACH

34000 E
A.S.C. plus **EVO**

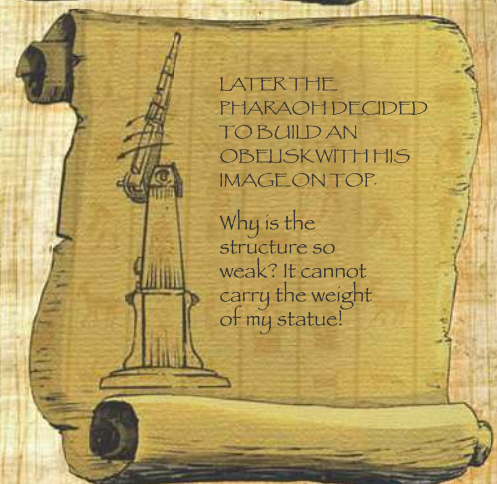
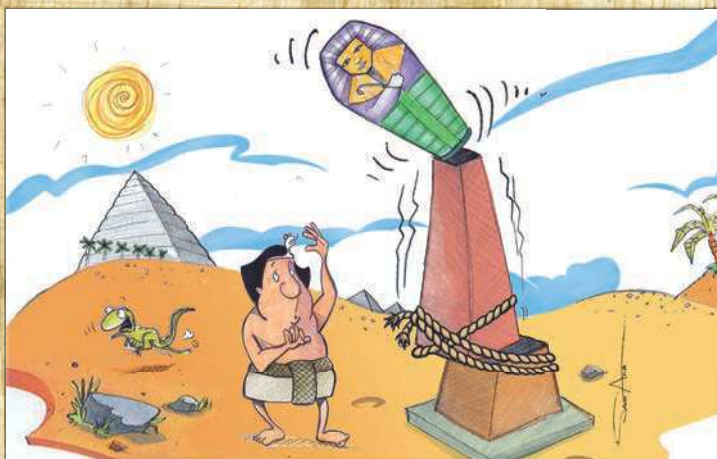
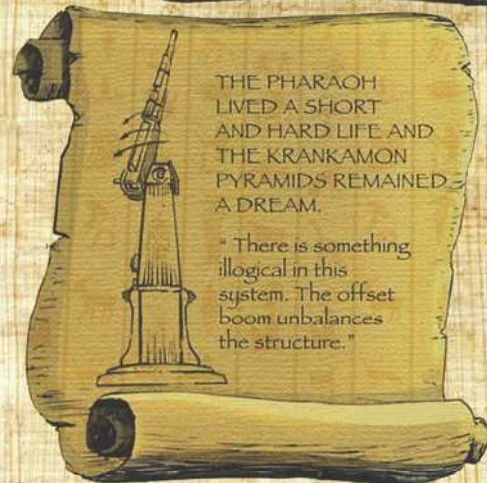
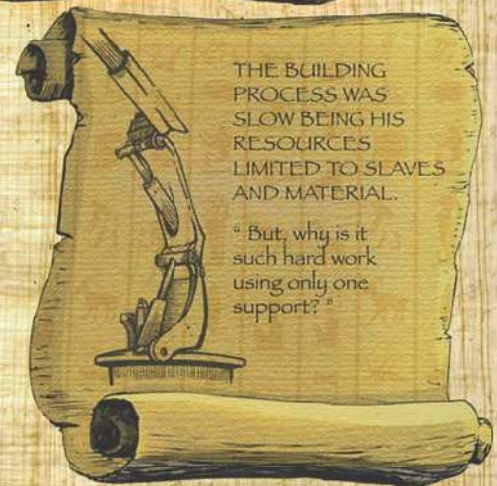
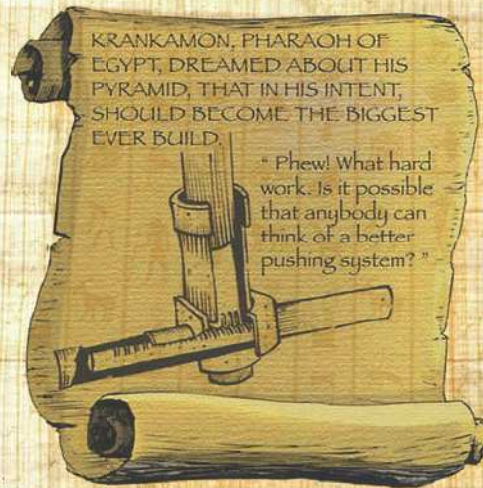


Quality Management
ISO 9001
www.dekra-secl.com

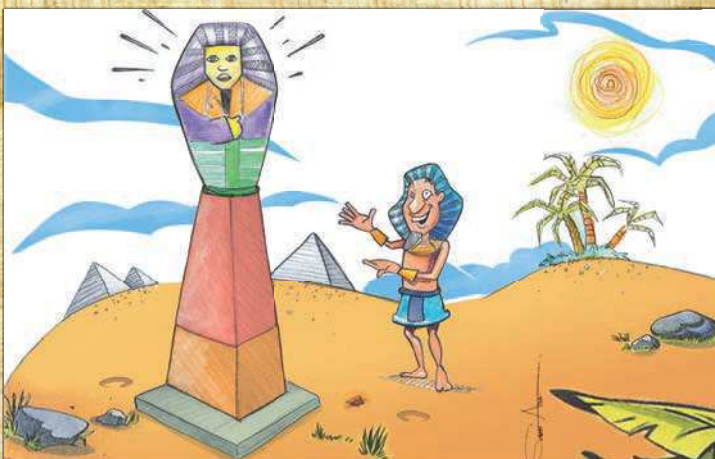
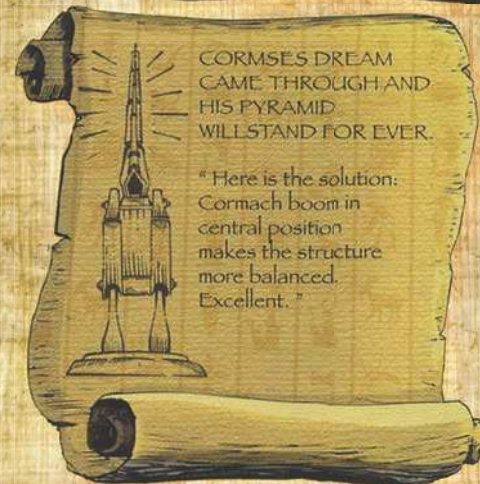
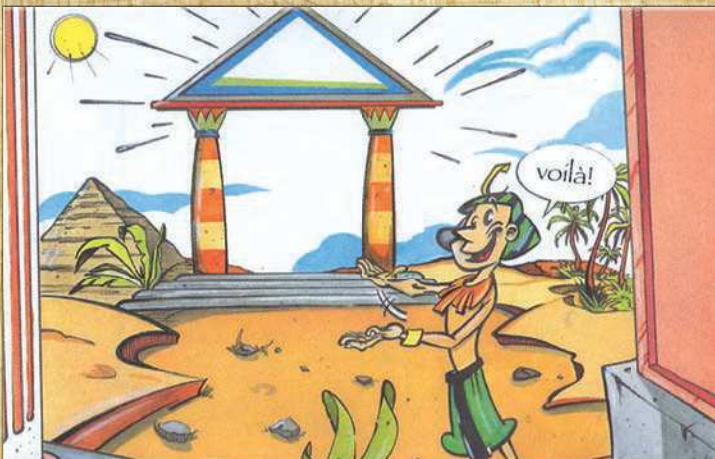
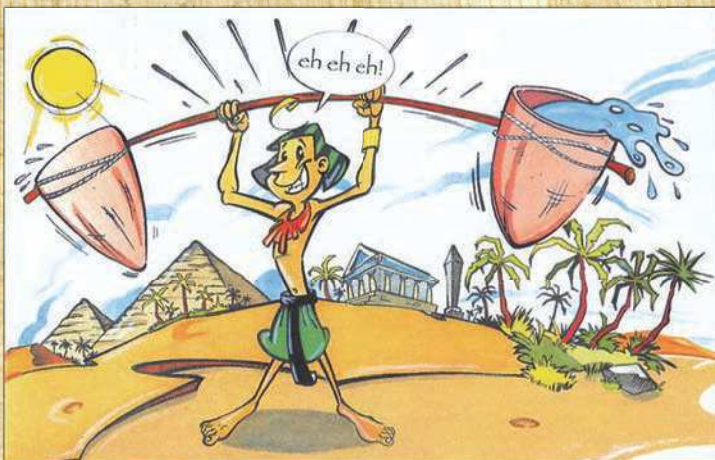


www.cormach.com
Courtesy of CraneMarket.com

... ABOUT ANCIENT



EGYPT MANUSCRIPTS



34000 E A.S.C. PLUS **EVO**



Radiocomando di serie.
Radio remote control.
Radiocommande de série.
Funkfernsteuerung serienmäßig.



Angolo negativo tra 1° e 2° braccio (20 gradi).
Negative angle between 1st and 2nd boom (20 degrees).
Angle négatif entre 1^{ère} et 2^{ème} bras (20 degrés).
Negativ Winkel zwischen ersten und zweiten Arm (20 Grad).



Sistema ritenzione cilindri gru chiusa.
Cylinders locking system when crane is folded.
Système de retenue vérin à grue ferme.
Halterung System mit zusammengelegten Kran.



Verricello tiro diretto 2500 daN (OPZIONE).
2500 daN Winch on first line (OPTIONAL).
Trebail de tir direct 2500 daN (OPTION).
2500 daN Winde am ersten Seil (Auf Frage).



Comandi accessibili da terra. Tutti i carter in acciaio inox AISI 304.
Controls can be reached standing on the side. All the carters are in stainless steel AISI 304.
Commandes accessibles de terre. Tous les carter sont en acier inox AISI 304.
Von der Seite steuerbar. Schutzplatten in Edelstahl AISI 304.



Distributore proporzionale DANFOSS.
DANFOSS proportional control bank.
Distributeur proportionnelle DANFOSS.
DANFOSS proportionale Steuerventil

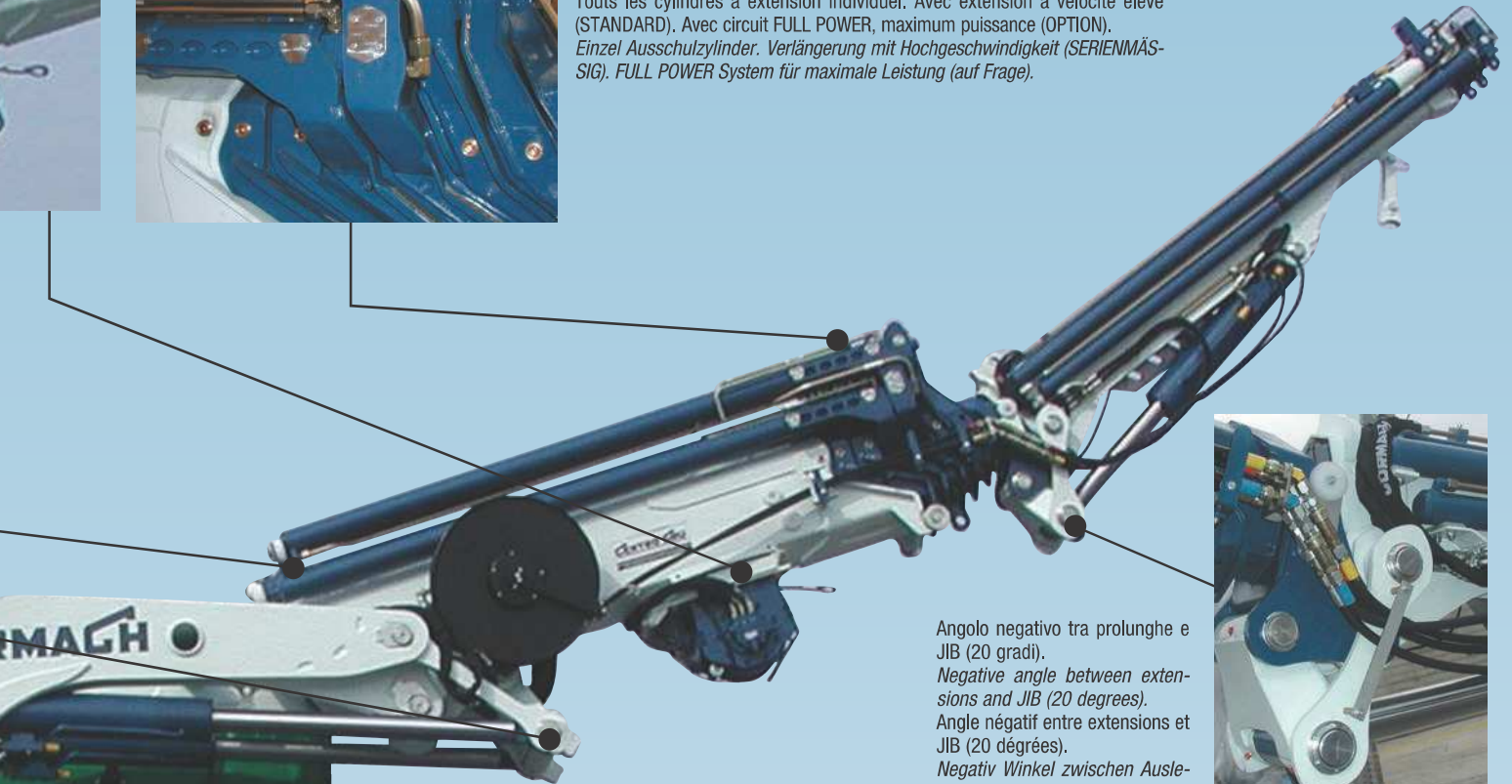


Scambiatore di calore.
Heat exchanger.
Echangeur de chaleur.
Ölkühler.

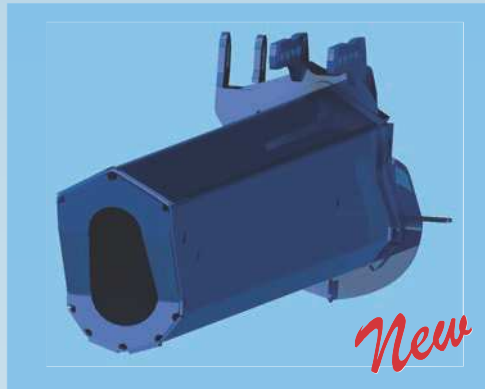




Tutti i cilindri a sfilo singolo. Con sfilo ad alta velocità (STANDARD). Con circuito FULL POWER, massima potenza (OPZIONE).
 All the cylinders with single extension. High speed extension (STANDARD). With FULL POWER circuit, greatest power (OPTIONAL).
 Tous les cylindres à extension individuel. Avec extension à vélocité élevé (STANDARD). Avec circuit FULL POWER, maximum puissance (OPTION).
 Einzel Ausschulzylinder. Verlängerung mit Hochgeschwindigkeit (SERIENMÄSSIG). FULL POWER System für maximale Leistung (auf Frage).



Angolo negativo tra prolunghe e JIB (20 gradi).
 Negative angle between extensions and JIB (20 degrees).
 Angle négatif entre extensions et JIB (20 degrés).
 Negativ Winkel zwischen Ausleger und jib (20 Grad).



Sezione prolunghe di ultima generazione.
 New generation extension profile.
 Nouveau profil des extension hydrauliques (octogonal).
 Verlaengerung-Schnitt neuer Generation

New



Cilindro stabilizzatore ribaltabile 180° (OPZIONE).
 180 degrees tilting stabilising cylinder (OPTIONAL).
 Cylindre stabilisateur escamotable 180 degrés (OPTION).
 Stutzylinder kann 180° umgekippt werden (auf Frage).



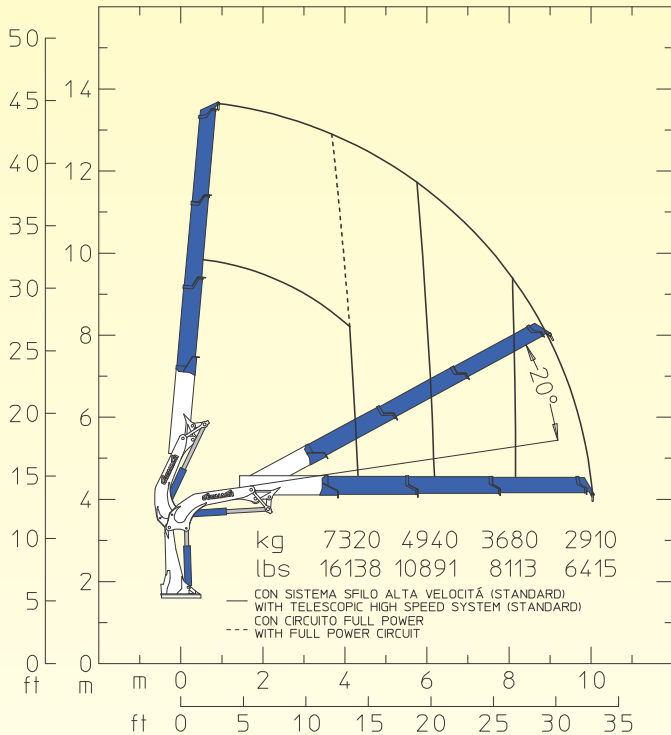
34000 E A.S.C. PLUS EVO



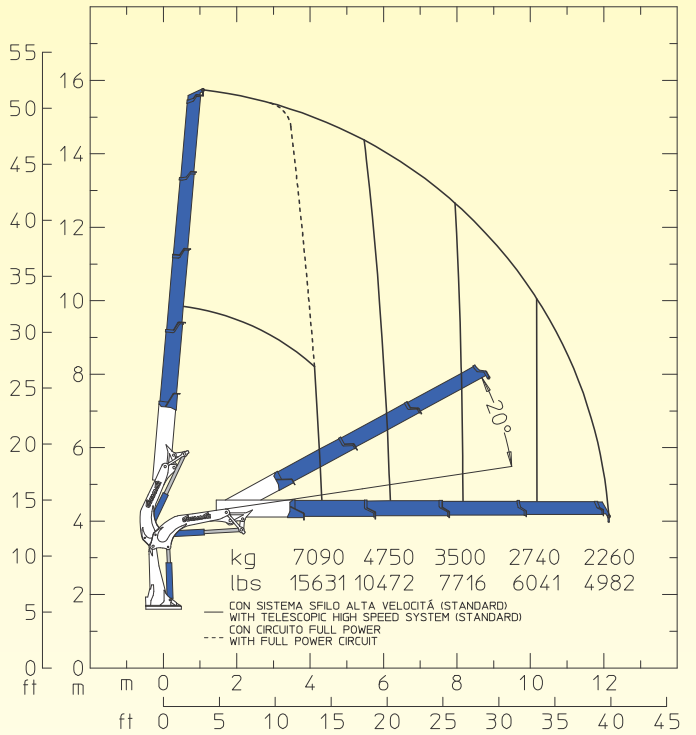


34000 E A.S.C. PLUS EVO

34000 E3



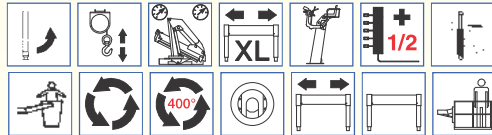
34000 E4



STANDARD



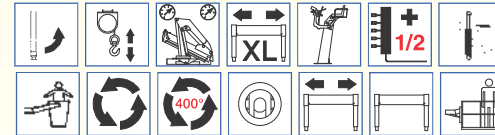
OPTIONAL



STANDARD



OPTIONAL

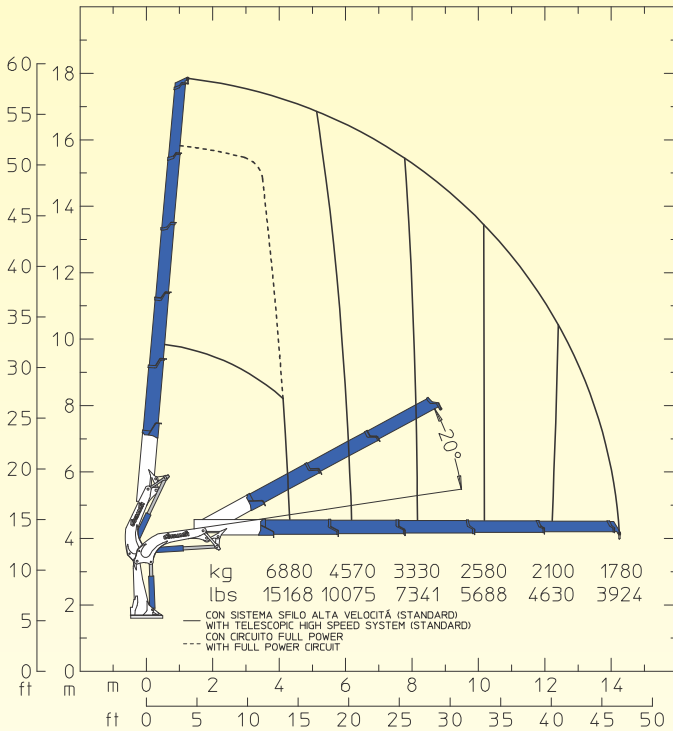


E3	E3		E4	E4
34500 da N*m	254460 Lb*ft	Momento statico massimo al perno torretta • Max. static moment at the turret pin Moment statique max. a l'axe de la tourelle • Max. statisches ubmoment am kransaulenbolzen	34500 da N*m	254460 Lb*ft
10.04 m	33' 0" ft	Sbraccio idraulico • Hydraulic boom length Longueur du bras hydraulique • Hydraulic reichweite	12.14 m	39' 10" ft
/	/	Sbraccio con prolunghe manuali • Boom length with manual extensions Longueur du bras avec rallonges manuelles	/	/
3700 da N*m	27290 Lb*ft	Coppia di rotazione • Slew torque • Moment de rotation • Drehmoment	3700 da N*m	27290 Lb*ft
sec. 33 - 360°	sec. 33 - 360°	Tempo di rotazione • Slewing speed • Temp de rotation • Schwenkgeschwindigkeit	sec. 33 - 360°	sec. 33 - 360°
1500+1750 mm	4' 11" + 5' 9" ft	Uscita stabilizzatori (*) • Outriggers extensions (*) Sortie des bequilles (*) • Breite der abstützung (*)	1500+1750 mm	4' 11" + 5' 9" ft
5630 mm	18' 6" ft	Larghezza stabilizzatori (***) • Outriggers width (***) Largeur des bequilles (***) • Breite der abstützung (***)	5630 mm	18' 6" ft
1220 mm	4' 0" ft	Lunghezza • Length • Longueur • Länge	1220 mm	4' 0" ft
2550 mm	8' 4" ft	Larghezza • Width • Largeur • Breite	2550 mm	8' 4" ft
2250 mm	7' 5" ft	Altezza • Height • Hauteur • Höhe	2250 mm	7' 5" ft
3650 Kg	8047 lbs	Peso (senza olio e montaggio) • Weight (without oil and fitting) Poids (sans huile et montage) • Gewicht (ohne öl und ohne)	3830 Kg	8444 lbs
60 l/min	16 us gal/min	Portata pompa (****) • Pump delivery (****) • Capacité de la pompe (****) • Pumpenheistung (****)	60 l/min	16 us gal/min
300 bar	4266 psi	Pressione • Pressure • Pression • Druck	300 bar	4266 psi
160 l	42 us gal	Capacità serbatoio olio • Oil tank capacity • Capacité de reservoir d'huile • Öl tank inhalt	160 l	42 us gal

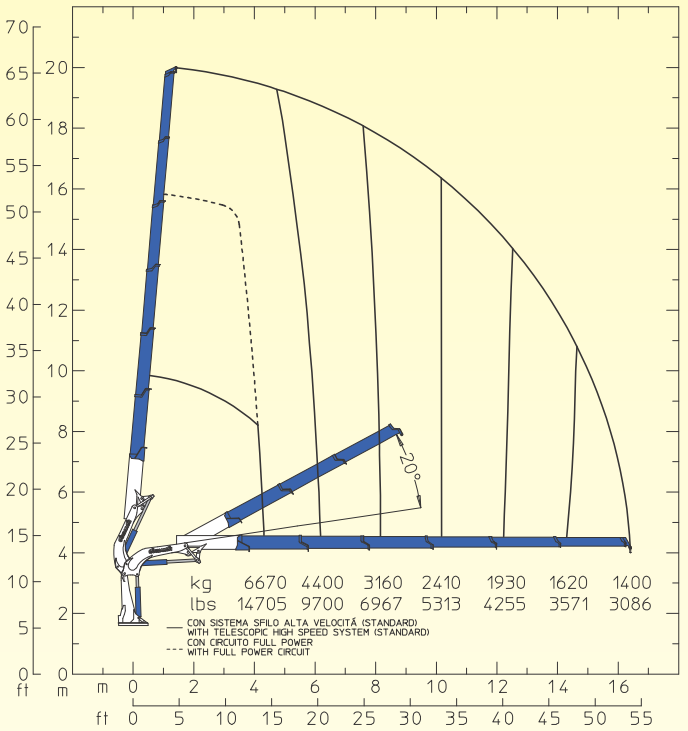
Opzione • Option • Option • Option: (*) 2100 + 2350 (6' 11" + 7' 9") - (**) 6830 (22' 5") - (***) Consigliata / Recommended / Recommandé / Empfohlen.

Courtesy of CraneMarket.com

34000 E5



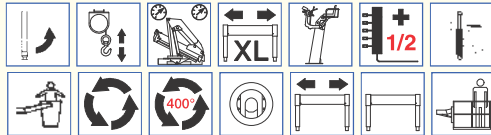
34000 E6



STANDARD



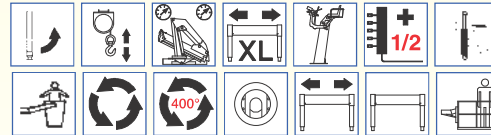
OPTIONAL



STANDARD



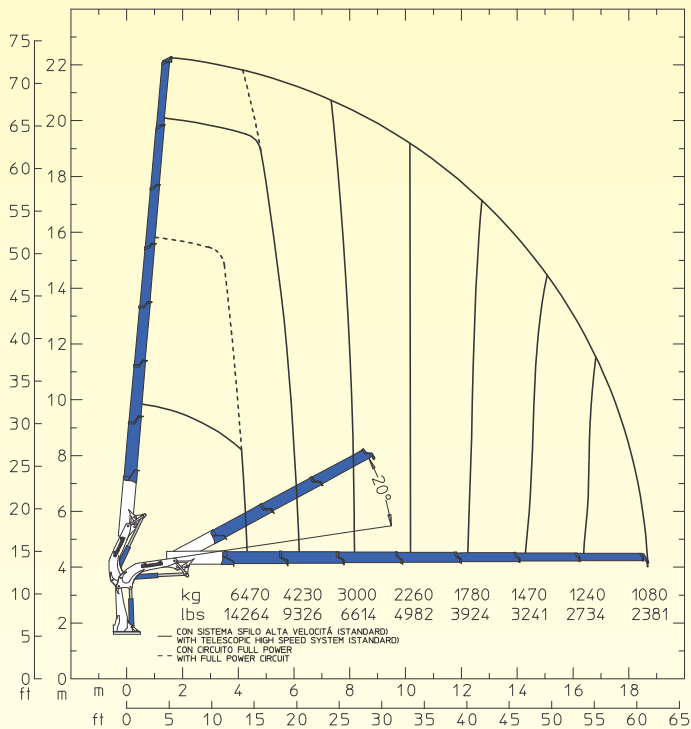
OPTIONAL



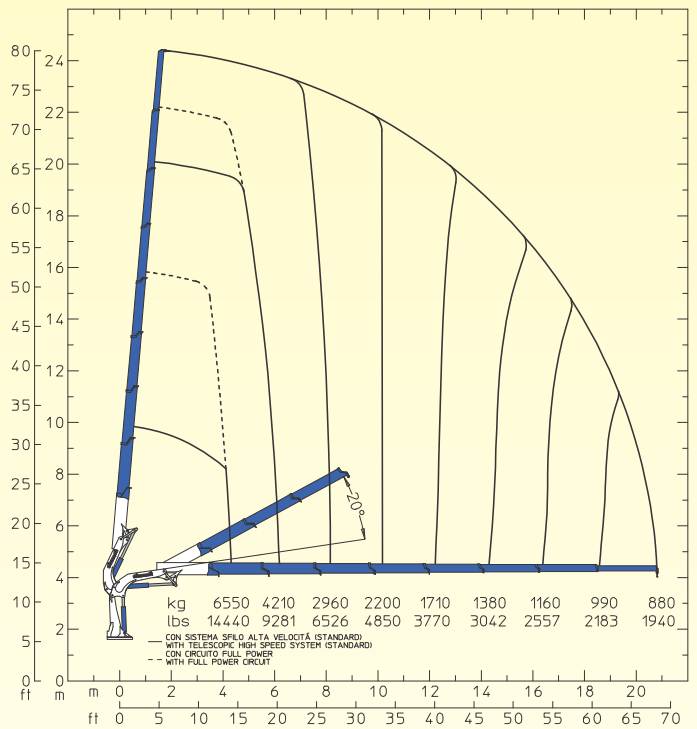
E5	E5		E6	E6
34500 da N*m	254460 Lb*ft	Momento statico massimo al perno torretta • Max. static moment at the turret pin Moment statique max. a l'axe de la tourelle • Max. statisches ubmoment am kranseulenbolzen	34500 da N*m	254460 Lb*ft
14.25 m	46' 9" ft	Sbraccio idraulico • Hydraulic boom length Longueur du bras hydraulique • Hydraulic reichweite	16.40 m	53' 10" ft
/	/	Sbraccio con prolunghe manuali • Boom length with manual extensions Longueur du bras avec rallonges manuelles	/	/
3700 da N*m	27290 Lb*ft	Coppia di rotazione • Slew torque • Moment de rotation • Drehmoment	3700 da N*m	27290 Lb*ft
sec. 33 - 360°	sec. 33 - 360°	Tempo di rotazione • Slewing speed • Temp de rotation • Schwenkgeschwindigkeit	sec. 33 - 360°	sec. 33 - 360°
1500+1750 mm	4' 11" + 5' 9" ft	Uscita stabilizzatori (*) • Outriggers extensions (*) Sortie des bequilles (*) • Breite der abstützung (*)	1500+1750 mm	4' 11" + 5' 9" ft
5630 mm	18' 6" ft	Larghezza stabilizzatori (***) • Outriggers width (***) Largeur des bequilles (***) • Breite der abstützung (***)	5630 mm	18' 6" ft
1220 mm	4' 0" ft	Lunghezza • Length • Longueur • Länge	1220 mm	4' 0" ft
2550 mm	8' 4" ft	Larghezza • Width • Largeur • Breite	2550 mm	8' 4" ft
2250 mm	7' 5" ft	Altezza • Height • Hauteur • Höhe	2250 mm	7' 5" ft
4000 Kg	8818 lbs	Peso (senza olio e montaggio) • Weight (without oil and fitting) Poids (sans huile et montage) • Gewicht (ohne öl und ohne)	4175 Kg	9204 lbs
60 l/min	16 us gal/min	Portata pompa (****) • Pump delivery (****) • Capacité de la pompe (****) • Pumpenheistung (****)	60 l/min	16 us gal/min
300 bar	4266 psi	Pressione • Pressure • Pression • Druck	300 bar	4266 psi
160 l	42 us gal	Capacità serbatoio olio • Oil tank capacity • Capacité de reservoir d'huile • Öl tank inhalt	160 l	42 us gal

34000 E A.S.C. PLUS EVO

34000 E7



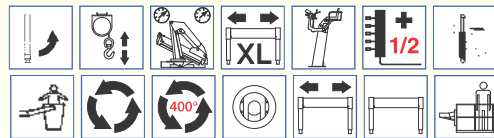
34000 E8



STANDARD



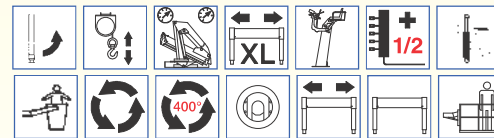
OPTIONAL



STANDARD



OPTIONAL

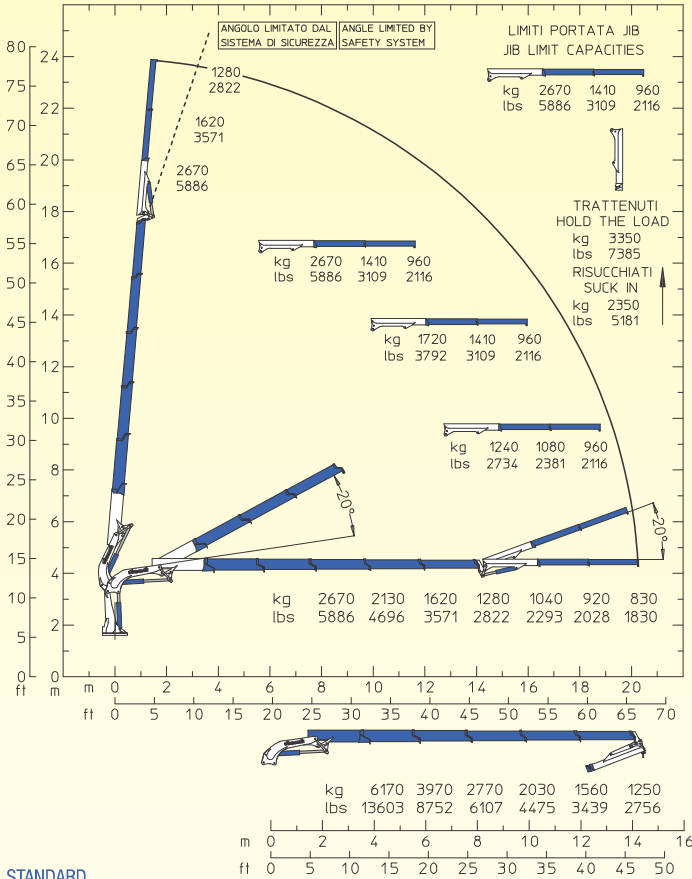


E7	E7		E8	E8
34500 da N*m	254460 Lb*ft	Momento statico massimo al perno torretta • Max. static moment at the turret pin Moment statique max. a l'axe de la tourelle • Max. statisches ubmoment am kranseulenbolzen	34500 da N*m	254460 Lb*ft
18.68 m	61' 3" ft	Sbraccio idraulico • Hydraulic boom length Longueur du bras hydraulique • Hydraulic reichweite	20.81 m	68' 3" ft
/	/	Sbraccio con prolunghe manuali • Bomm length with manual extensions Longueur du bras avec rallonges manuelles	/	/
3700 da N*m	27290 Lb*ft	Coppia di rotazione • Slew torque • Moment de rotation • Drehmoment	3700 da N*m	27290 Lb*ft
sec. 33 - 360°	sec. 33 - 360°	Tempo di rotazione • Slewing speed • Temp de rotation • Schwenkgeschwindigkeit	sec. 33 - 360°	sec. 33 - 360°
1500+1750 mm	4' 11" + 5' 9" ft	Uscita stabilizzatori (*) • Outriggers extensions (*) Sortie des bequilles (*) • Breite der abstützung (*)	1500+1750 mm	4' 11" + 5' 9" ft
5630 mm	18' 6" ft	Larghezza stabilizzatori (***) • Outriggers width (***) Largeur des bequilles (***) • Breite der abstützung (***)	5630 mm	18' 6" ft
1220 mm	4' 0" ft	Lunghezza • Length • Longueur • Länge	1220 mm	4' 0" ft
2550 mm	8' 4" ft	Larghezza • Width • Largeur • Breite	2550 mm	8' 4" ft
2250 mm	7' 5" ft	Altezza • Height • Hauteur • Höhe	2250 mm	7' 5" ft
4330 Kg	9546 lbs	Peso (senza olio e montaggio) • Weight (without oil and fitting) Poids (sans huile et montage) • Gewicht (ohne öl und ohne)	4435 Kg	9777 lbs
60 l/min	16 us gal/min	Portata pompa (****) • Pump delivery (****) • Capacité de la pompe (****) • Pumpenleistung (****)	60 l/min	16 us gal/min
300 bar	4266 psi	Pressione • Pressure • Pression • Druck	300 bar	4266 psi
160 l	42 us gal	Capacità serbatoio olio • Oil tank capacity • Capacité de reservoir d'huile • Öl tank inhalt	160 l	42 us gal

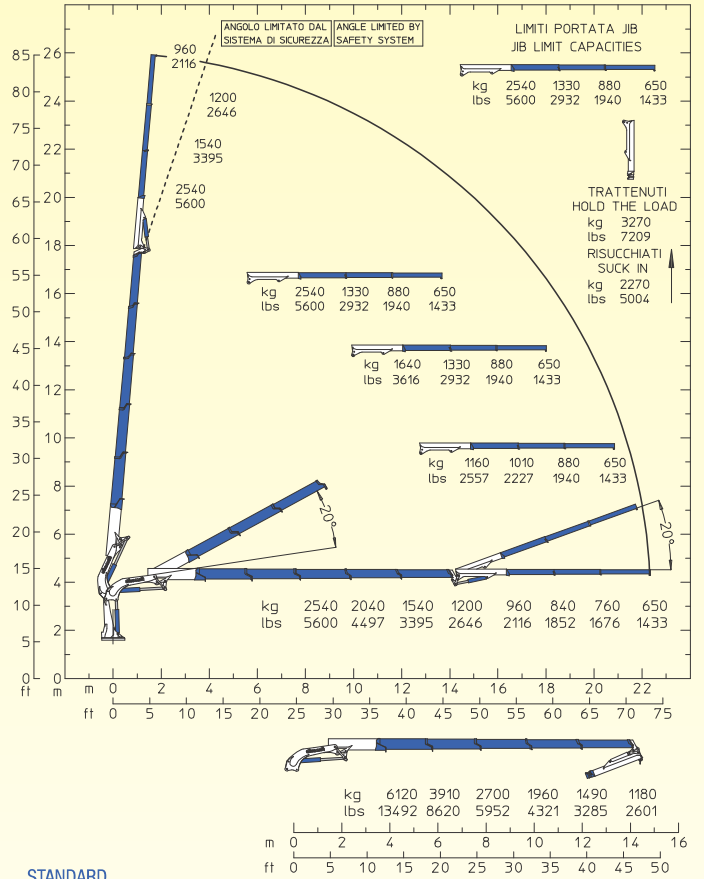
Opzione • Option • Option • Option: (*) 2100 + 2350 (6' 11" + 7' 9") - (**) 6830 (22' 5") - (***) Consigliata / Recommended / Recommandé / Empfohlen.

Courtesy of CraneMarket.com

34000 E5F62



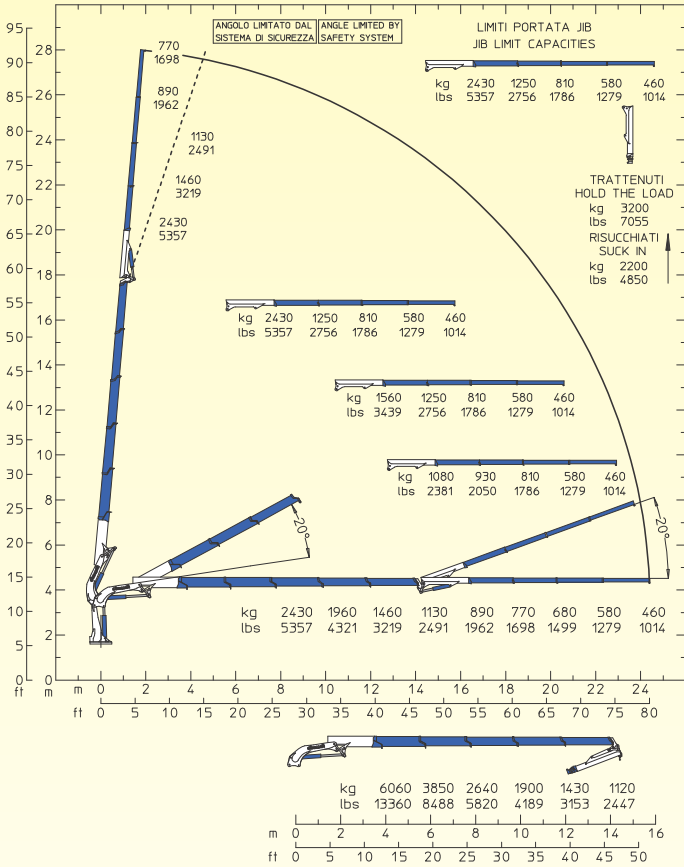
34000 E5F63



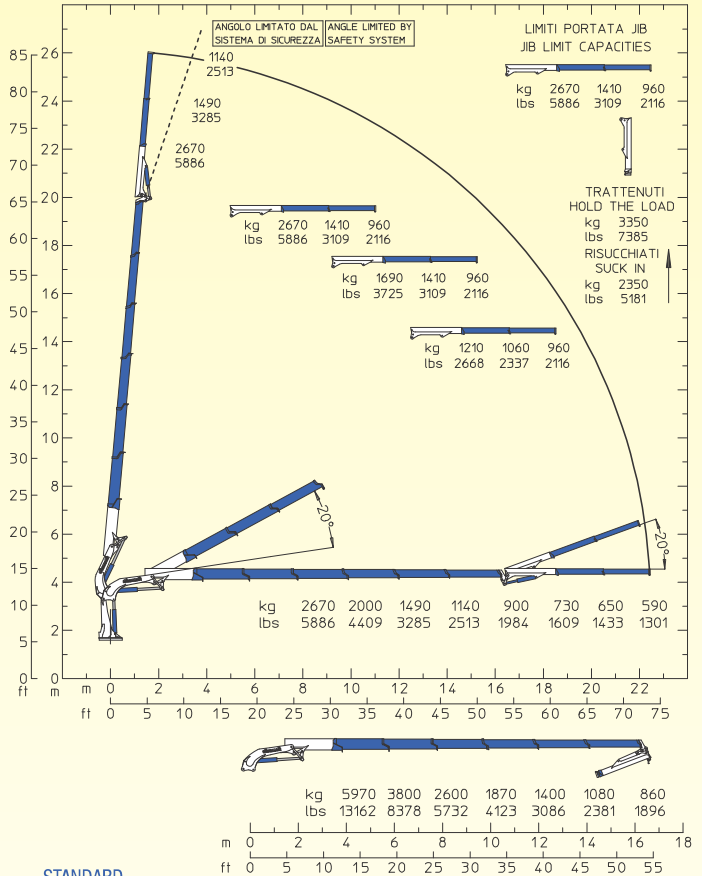
E5F62	E5F62		E5F63	E5F63
34500 da N*m	254460 Lb*ft	Momento statico massimo al perno torretta • Max. static moment at the turret pin Moment statique max. a l'axe de la tourelle • Max. statisches ubmoment am kranseulenbolzen	34500 da N*m	254460 Lb*ft
20.30 m	66' 7" ft	Sbraccio idraulico • Hydraulic boom length Longueur du bras hydraulique • Hydraulic reichweite	22.35 m	73' 4" ft
/	/	Sbraccio con prolunghe manuali • Bomm length with manual extensions Longueur du bras avec rallonges manuelles	/	/
3700 da N*m	27290 Lb*ft	Coppia di rotazione • Slew torque • Moment de rotation • Drehmoment	3700 da N*m	27290 Lb*ft
sec. 33 - 360°	sec. 33 - 360°	Tempo di rotazione • Slewing speed • Temp de rotation • Schwenkgeschwindigkeit	sec. 33 - 360°	sec. 33 - 360°
1500+1750 mm	4' 11" + 5' 9" ft	Uscita stabilizzatori (*) • Outriggers extensions (*) Sortie des bequilles (*) • Breite der abstützung (*)	1500+1750 mm	4' 11" + 5' 9" ft
5630 mm	18' 6" ft	Larghezza stabilizzatori (***) • Outriggers width (***) Largeur des bequilles (***) • Breite der abstützung (***)	5630 mm	18' 6" ft
1220 mm	4' 0" ft	Lunghezza • Length • Longueur • Länge	1220 mm	4' 0" ft
2550 mm	8' 4" ft	Larghezza • Width • Largeur • Breite	2550 mm	8' 4" ft
2510 mm	8' 3" ft	Altezza • Height • Hauteur • Höhe	2510 mm	8' 3" ft
4610 Kg	10163 lbs	Peso (senza olio e montaggio) • Weight (without oil and fitting) Poids (sans huile et montage) • Gewicht (ohne öl und ohne)	4690 Kg	10340 lbs
60 l/min	16 us gal/min	Portata pompa (****) • Pump delivery (****) • Capacité de la pompe (****) • Pumpenleistung (****)	60 l/min	16 us gal/min
300 bar	4266 psi	Pressione • Pressure • Pression • Druck	300 bar	4266 psi
160 l	42 us gal	Capacità serbatoio olio • Oil tank capacity • Capacité de reservoir d'huile • Öl tank inhalt	160 l	42 us gal

34000 E A.S.C. PLUS EVO

34000 E5F64



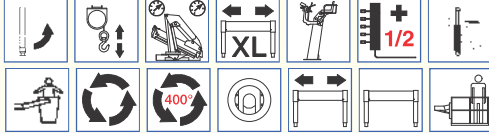
34000 E6F62



STANDARD



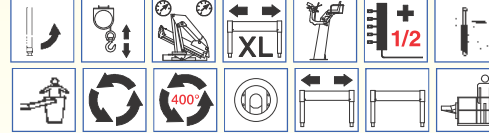
OPTIONAL



STANDARD



OPTIONAL

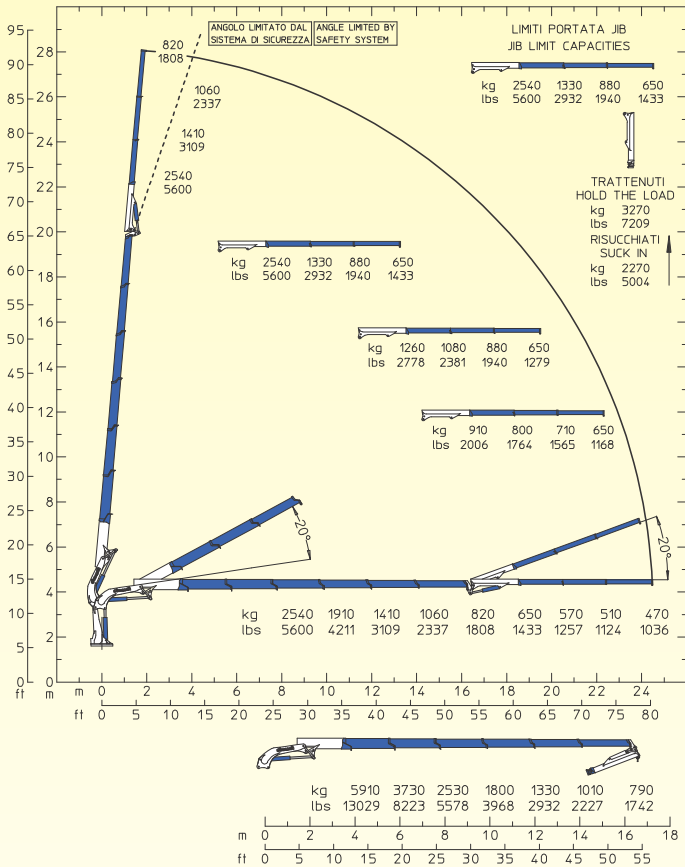


E5F64	E5F64		E6F62	E6F62
34500 da N*m	254460 Lb*ft	Momento statico massimo al perno torretta • Max. static moment at the turret pin Moment statique max. a l'axe de la tourelle • Max. statisches ubmoment am kransaulenbolzen	34500 da N*m	254460 Lb*ft
24.40 m	80' 1" ft	Sbraccio idraulico • Hydraulic boom length Longueur du bras hydraulique • Hydraulic reichweite	22.45 m	73' 8" ft
/	/	Sbraccio con prolunghe manuali • Bomm length with manual extensions Longueur du bras avec rallonges manuelles	/	/
3700 da N*m	27290 Lb*ft	Coppia di rotazione • Slew torque • Moment de rotation • Drehmoment	3700 da N*m	27290 Lb*ft
sec. 33 - 360°	sec. 33 - 360°	Tempo di rotazione • Slewing speed • Temp de rotation • Schwenkgeschwindigkeit	sec. 33 - 360°	sec. 33 - 360°
1500+1750 mm	4' 11" + 5' 9" ft	Uscita stabilizzatori (*) • Outriggers extensions (*) Sortie des bequilles (*) • Breite der abstützung (*)	1500+1750 mm	4' 11" + 5' 9" ft
5630 mm	18' 6" ft	Larghezza stabilizzatori (***) • Outriggers width (***) Largeur des bequilles (***) • Breite der abstützung (***)	5630 mm	18' 6" ft
1220 mm	4' 0" ft	Lunghezza • Length • Longueur • Länge	1220 mm	4' 0" ft
2550 mm	8' 4" ft	Larghezza • Width • Largeur • Breite	2550 mm	8' 4" ft
2510 mm	8' 3" ft	Altezza • Height • Hauteur • Höhe	2510 mm	8' 3" ft
4770 Kg	10516 lbs	Peso (senza olio e montaggio) • Weight (without oil and fitting) Poids (sans huile et montage) • Gewicht (ohne öl und ohne)	4780 Kg	10538 lbs
60 l/min	16 us gal/min	Portata pompa (****) • Pump delivery (****) • Capacité de la pompe (****) • Pumpenheistung (****)	60 l/min	16 us gal/min
300 bar	4266 psi	Pressione • Pressure • Pression • Druck	300 bar	4266 psi
160 l	42 us gal	Capacità serbatoio olio • Oil tank capacity • Capacité de reservoir d'huile • Öl tank inhalt	160 l	42 us gal

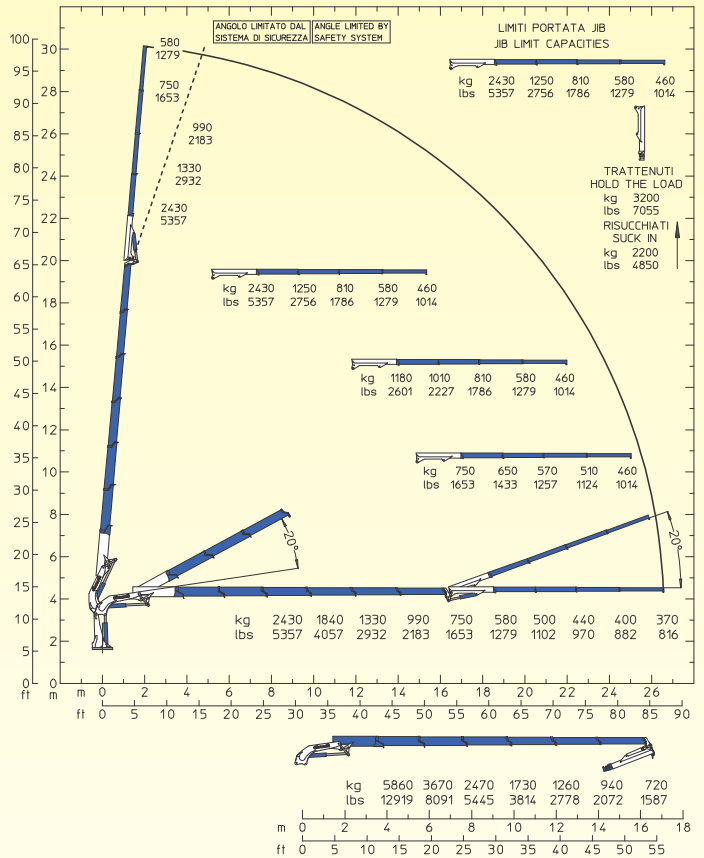
Opzione • Option • Option • Option: (*) 2100 + 2350 (6' 11" + 7' 9") - (**) 6830 (22' 5") - (***) Consigliata / Recommended / Recommandé / Empfohlen.

Courtesy of CraneMarket.com

34000 E6F63



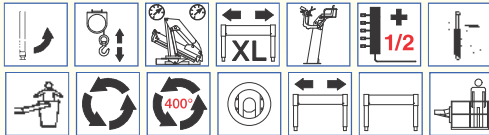
34000 E6F64



STANDARD



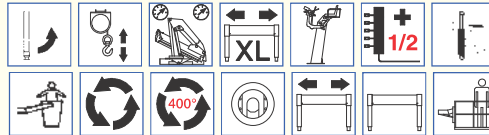
OPTIONAL



STANDARD

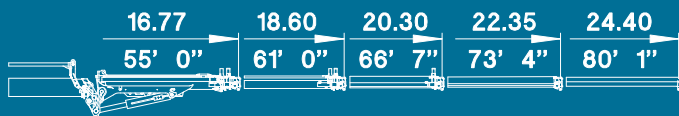


OPTIONAL

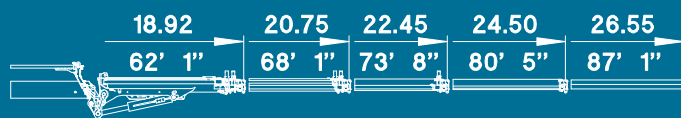


E6F63	E6F63		E6F64	E6F64
34500 da N*m	254460 Lb*ft	Momento statico massimo al perno torretta • Max. static moment at the turret pin Moment statique max. a l'axe de la tourelle • Max. statisches ubmoment am kransaulenbolzen	34500 da N*m	254460 Lb*ft
24.50 m	80' 5" ft	Sbraccio idraulico • Hydraulic boom length Longueur du bras hydraulique • Hydraulic reichweite	26.55 m	87' 1" ft
/	/	Sbraccio con prolunghe manuali • Bomm length with manual extensions Longueur du bras avec rallonges manuelles	/	/
3700 da N*m	27290 Lb*ft	Coppia di rotazione • Slew torque • Moment de rotation • Drehmoment	3700 da N*m	27290 Lb*ft
sec. 33 - 360°	sec. 33 - 360°	Tempo di rotazione • Slewing speed • Temp de rotation • Schwenkgeschwindigkeit	sec. 33 - 360°	sec. 33 - 360°
1500+1750 mm	4' 11" + 5' 9" ft	Uscita stabilizzatori (*) • Outriggers extensions (*) Sortie des bequilles (*) • Breite der abstützung (*)	1500+1750 mm	4' 11" + 5' 9" ft
5630 mm	18' 6" ft	Larghezza stabilizzatori (***) • Outriggers width (***) Largeur des bequilles (***) • Breite der abstützung (***)	5630 mm	18' 6" ft
1220 mm	4' 0" ft	Lunghezza • Length • Longueur • Länge	1220 mm	4' 0" ft
2550 mm	8' 4" ft	Larghezza • Width • Largeur • Breite	2550 mm	8' 4" ft
2510 mm	8' 3" ft	Altezza • Height • Hauteur • Höhe	2510 mm	8' 3" ft
4860 Kg	10714 lbs	Peso (senza olio e montaggio) • Weight (without oil and fitting) Poids (sans huile et montage) • Gewicht (ohne öl und ohne)	4940 Kg	10891 lbs
60 l/min	16 us gal/min	Portata pompa (****) • Pump delivery (****) • Capacité de la pompe (****) • Pumpenheistung (****)	60 l/min	16 us gal/min
300 bar	4266 psi	Pressione • Pressure • Pression • Druck	300 bar	4266 psi
160 l	42 us gal	Capacità serbatoio olio • Oil tank capacity • Capacité de reservoir d'huile • Öl tank inhalt	160 l	42 us gal

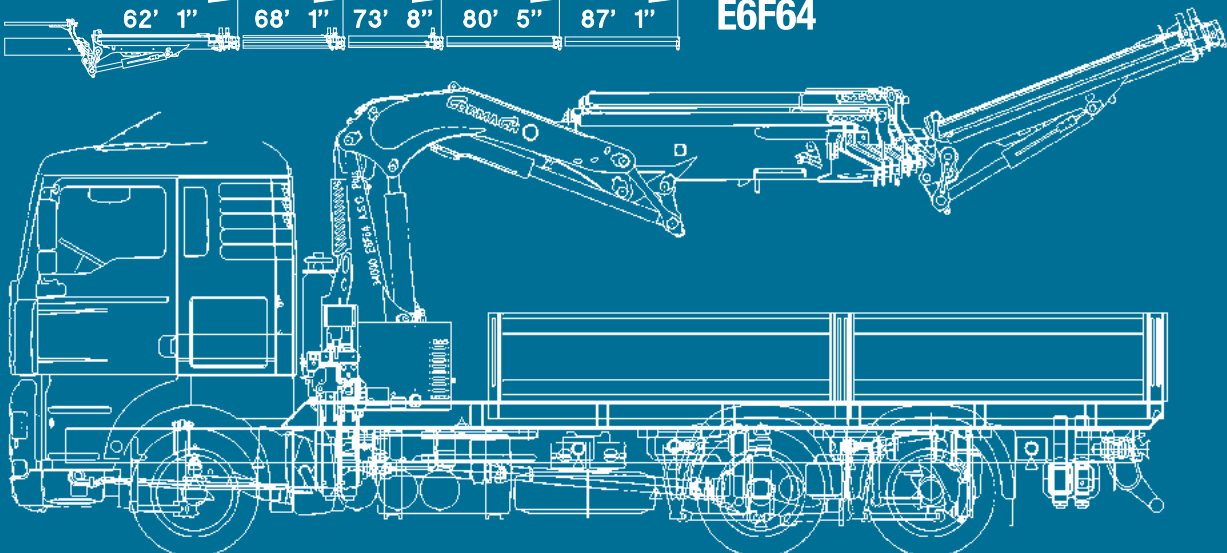
E5F62		E5F63		E5F64		E6F62		E6F63		E6F64	
m/ft	kg/lbs	m/ft	kg/lbs	m/ft	kg/lbs	m/ft	kg/lbs	m/ft	kg/lbs	m/ft	kg/lbs
8.57	2670	8.64	2540	8.71	2430	8.63	2670	8.70	2540	8.76	2430
28'1"	5886	28'4"	5600	28'7"	5357	28'4"	5886	28'7"	5600	28'9"	5357
10.52	2130	10.59	2040	10.66	1960	10.58	2000	10.65	1910	10.71	1840
34'6"	4696	34'9"	4497	35'0"	4321	34'9"	4409	35'0"	4211	35'2"	4057
12.54	1620	12.61	1540	12.68	1460	12.60	1490	12.67	1410	12.73	1330
41'1"	3571	41'4"	3395	41'7"	3219	41'4"	3285	41'7"	3109	41'9"	2932
14.58	1280	14.65	1200	14.72	1130	14.64	1140	14.71	1060	14.77	990
47'9"	2822	48'0"	2646	48'3"	2491	48'0"	2513	48'3"	2337	48'5"	2183
16.63	1040	16.70	960	16.77	890	16.69	900	16.76	820	16.82	750
54'6"	2293	54'9"	2116	55'0"	1962	54'9"	1984	55'0"	1808	55'2"	1653
18.46	920	18.53	840	18.60	770	18.78	730	18.85	650	18.92	580
60'6"	2028	60'9"	1852	61'0"	1698	61'7"	1609	61'10"	1433	62'1"	1279
20.30	830	20.37	760	20.44	680	20.61	650	20.68	570	20.75	500
66'7"	1830	66'10"	1676	67'1"	1499	67'7"	1433	67'10"	1257	68'1"	1102
		22.35	650	22.42	580	22.45	590	22.52	510	22.59	440
		73'4"	1433	73'7"	1279	73'8"	1301	73'11"	1124	74'1"	970
				24.40	460			24.50	470	24.57	400
				80'1"	1014			80'5"	1036	80'7"	882
										26.55	370
										87'1"	816



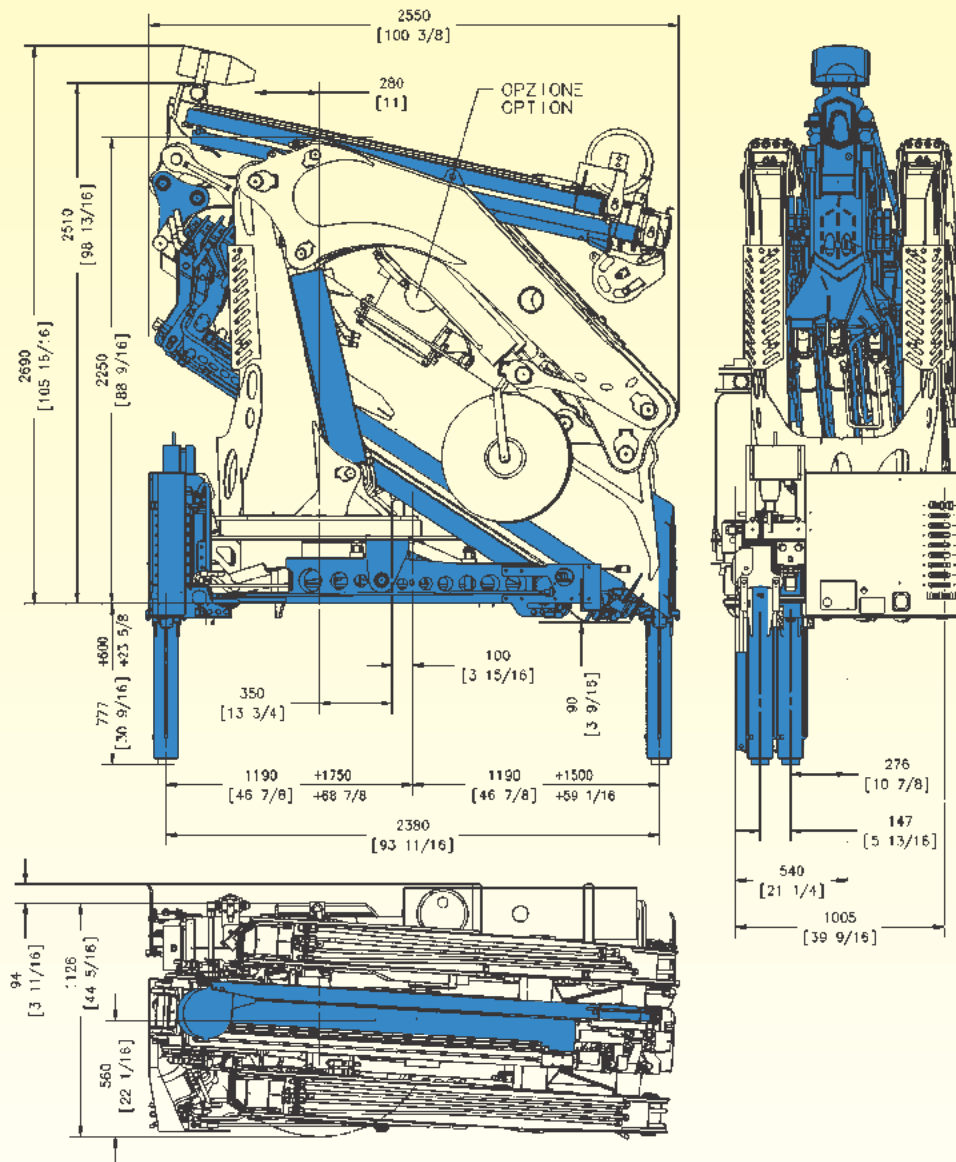
E5F64



E6F64



34000 E A.S.C. PLUS EVO



STANDARD



Rotazione 360°
Rotation 360°
Rotation 360°
Drehbereich 360°



Radiocomando
Radio remote control
Radiocommandes
Funkfernsteuerung



Comando supplementare non attivato (1)
Additional free section not activated (1)
Section du distributeur pas activé (1)
Zusätzlicher steuerschieber (1)



Limitatore di momento
Load limiting device
Limiteur de charge
Überlastabschaltungssystem



Stabilizzatori gru base estendibili idraulicamente
Outriggers with hydraulic
Stabilisateurs avec extension hydraulique
Hydraulisch ausfahrbare stützen



Automatic Speed Control
Automatic Speed Control
Automatic Speed Control
Automatic Speed Control



Scambiatore di calore
Oil cooler
Echangeur de chaleur
Ölkühler

OPTIONAL



Stabilizzatori gru base girevoli
Tilt up outriggers
Bequiles tournants
Drehbare stützen



Verricello
Winch
Treuril
Seilwinde



Doppio limitatore di momento
Double load limiting device
Double limiteur de charge
Doppel Überlastabschaltungssystem



Stabilizzatori gru base extralarghi
Extra wide crane outriggers
Stabilisateurs grue extra large
Extra breite kran stützen



Posto di manovra in alto
Top seat
Siege en haut
Hochsitz



Comando supplementare attivato (1/2)
Additional function (1/2)
Section du distributeur activée (1/2)
Zusatzfunktion (1/2)



Trattamento marino della gru
Marine treatment of the crane
Traitement marine de la grue
Marine behandlung des kranes



Cestello
Basket
Nacelle
Personenkorb



Rotazione continua
Continuos rotation
Rotation continue
Endlos schwenkwerk



Rotazione 400°
Rotation 400°
Rotation 400°
Drehbereich 400°



Piastre di appoggio maggiorate
Large ground plates
Plaques stabilisateurs
Bodenplatten



Traversa ausiliaria estendibile
Additional outriggers with lateral extension
Stabilisateur supplementaires avec elargissement
Ausfahrbare zusatz- stützen



Traversa ausiliaria fissa
Additional outriggers beam without extension
Stabilisateur supplementaires sans elargissement
Zusätzliche abstützbeine



Piattaforma autolivellante
Self leveling platform
Plateforme auto nivelante
Arbeitskorb mit automatische Ausgleich Analoge



34000 E A.S.C. PLUS EVO







A fronte di una continua ricerca tecnologica i dati possono cambiare senza preavviso. Contattare il nostro Ufficio Commerciale per ulteriori informazioni.
Because of continuous technology research data can change without notice. Please, contact our Commercial Dept. for further information.
A cause de une continue recherche technologique les données peuvent changer sans préavis. Contacter notre Bureau Commercial pour des autres informations.
Irrtum und technische Änderung vorbehalten, Masse und Gewichte unverbindlich. Unser Vertrieb erteilt Ihnen gerne weitere Auskünfte. Bitte rufen Sie uns an.
Debido a los continuos avances tecnológicos los datos pueden variar sin notificación previa. Para más información rogamos contacten nuestro Departamento Comercial.

CORMACH

Cormach s.r.l. - Via Madonnina, 27 - C.P. 199 - 25018 MONTICHIARI (BS) - ITALY
Tel. 0039.030.9656811 - Telefax 0039.030.9656846.7.8
E-mail: info@cormach.com - www.cormach.com