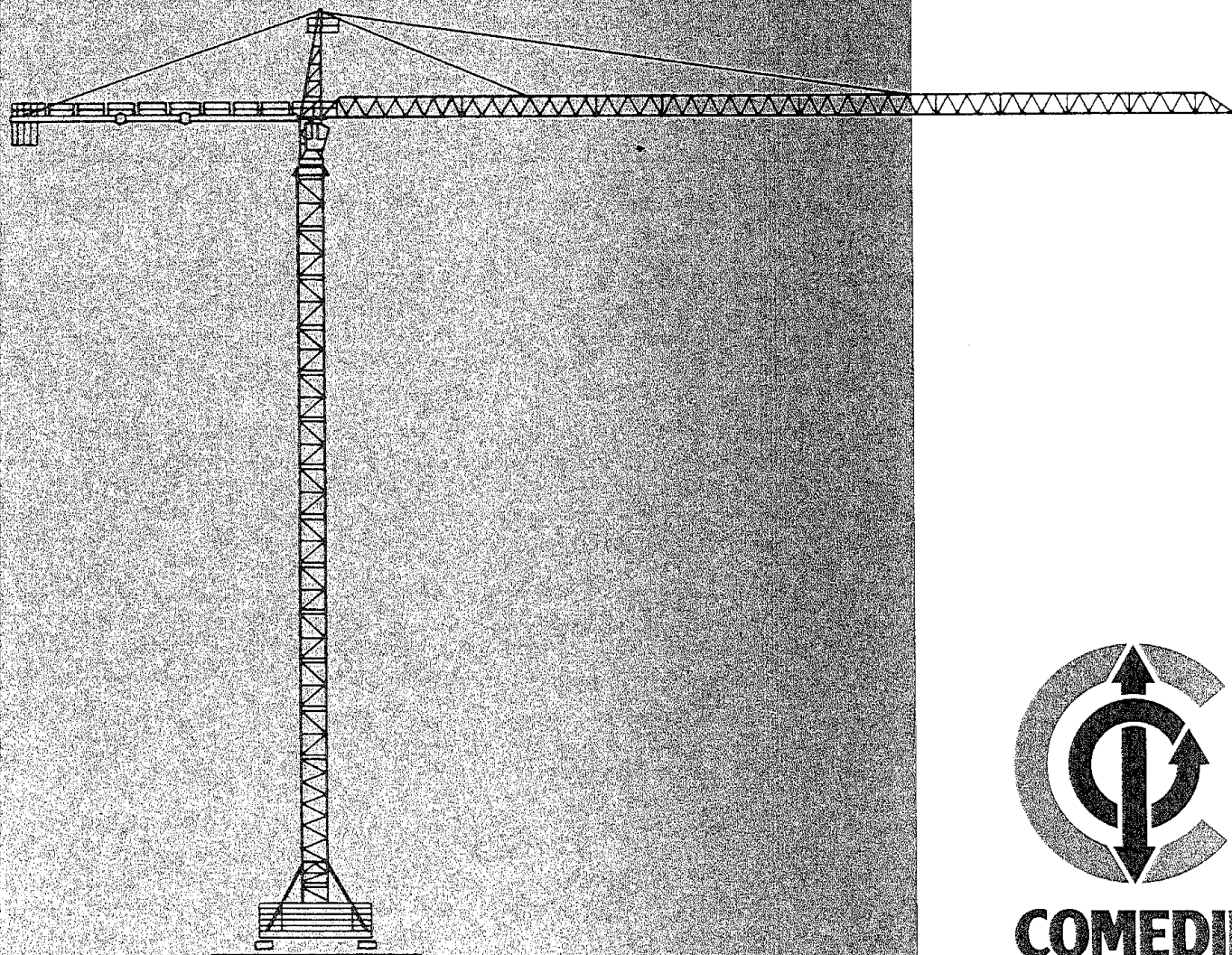
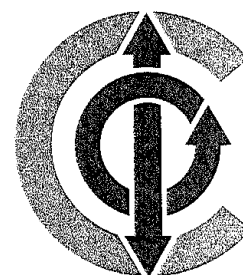


**Gru a torre  
Sistema modulare  
Giunzione a spine**

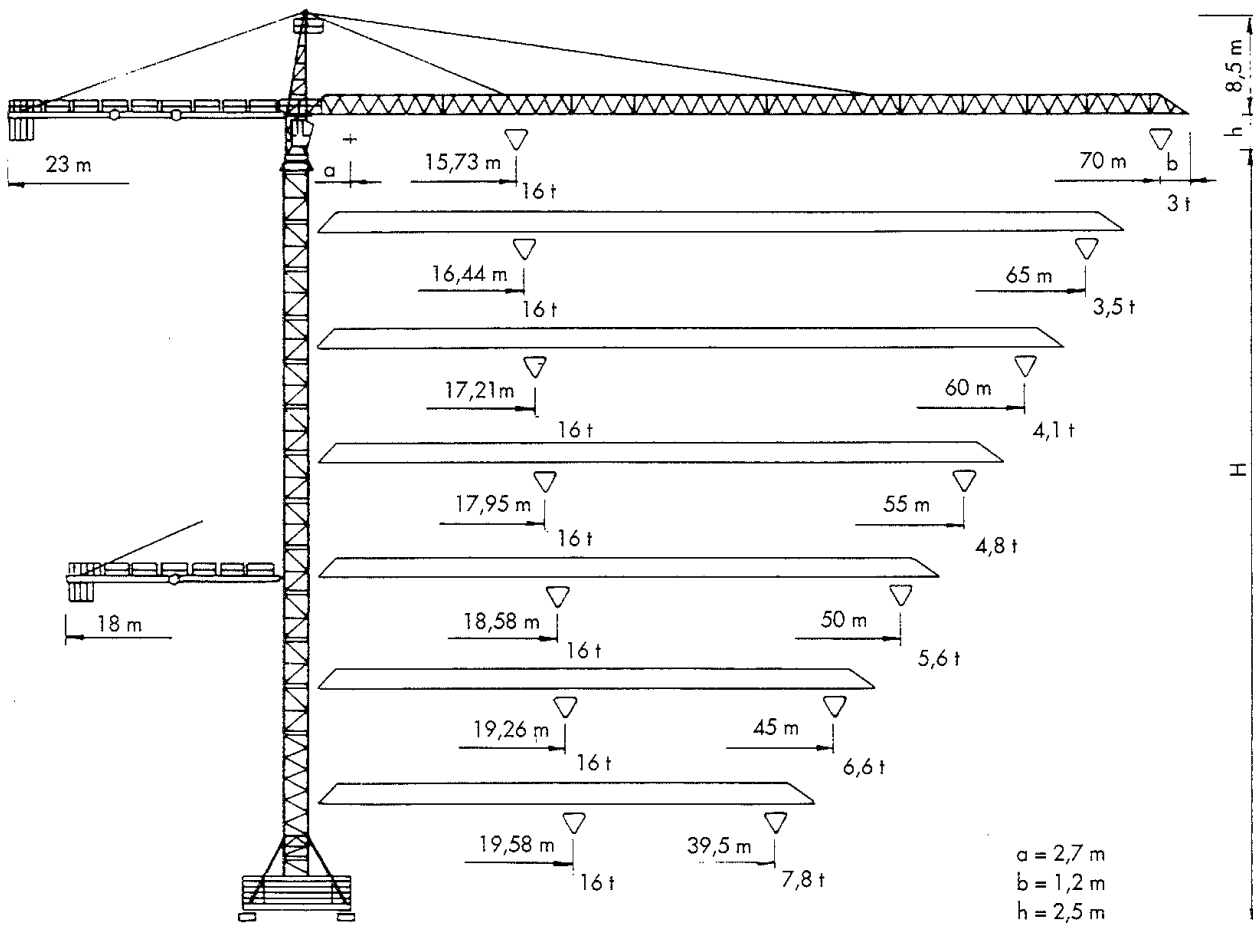
**Tower Crane  
Modular system  
Pin connection**



**CT 703 30-160**



**COMEDIL**

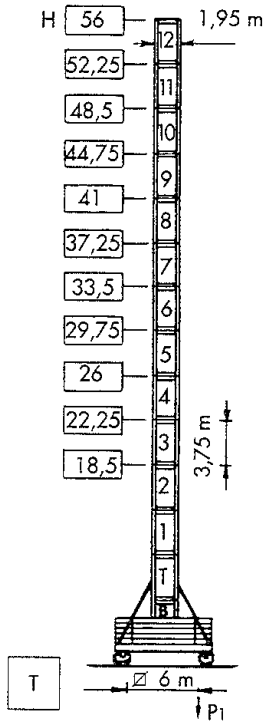


**Sbracci e portate - Radius and capacity** m

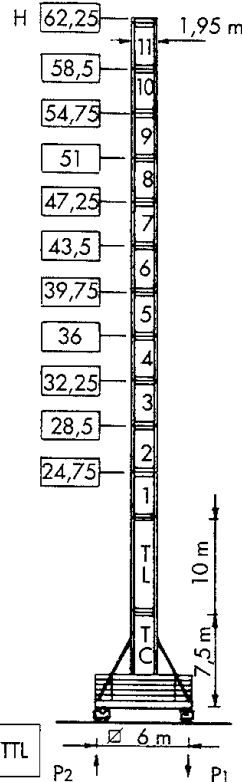
15	20	25	30	35	39,5	42	45	47	50	52	55	57	60	62	65	67	70
----	----	----	----	----	------	----	----	----	----	----	----	----	----	----	----	----	----

		t																	
		15	20	25	30	35	39,5	42	45	47	50	52	55	57	60	62	65	67	70
8 t. ÷ 31,02 m	(II)	8	8	8	8	6,98	6,07	5,65	5,21	4,85	4,59	4,38	4,08	3,91	3,66	3,51	3,31	3,18	3
16 t. ÷ 15,73 m	(IV)	16	12,22	9,43	7,58	6,25	5,34	4,92	4,48	4,22	3,86	3,65	3,35	3,18	2,93	2,78	2,58	2,45	2,27
8 t. ÷ 32,43 m	(II)	8	8	8	8	7,34	6,39	5,95	5,48	5,22	4,84	4,62	4,32	4,13	3,87	3,72	3,5		
16 t. ÷ 16,44 m	(IV)	16	12,85	9,94	8,0	6,61	5,66	5,22	4,76	4,49	4,14	3,89	3,58	3,40	3,14	2,99	2,77		
8 t. ÷ 33,94 m	(II)	8	8	8	8	7,73	6,74	6,28	5,79	5,50	5,12	4,88	4,56	4,37	4,1				
16 t. ÷ 17,21 m	(IV)	16	13,53	10,48	8,45	7,0	6,0	5,48	5,06	4,78	4,39	4,15	3,83	3,64	3,37				
8 t. ÷ 35,40 m	(II)	8	8	8	8	8	7,07	6,59	6,08	5,78	5,38	5,13	4,8						
16 t. ÷ 17,95 m	(IV)	16	14,18	11,0	8,89	7,37	6,34	5,86	5,35	5,05	4,65	4,40	4,07						
8 t. ÷ 36,64 m	(II)	8	8	8	8	8	7,35	6,85	6,33	6,02	5,6								
16 t. ÷ 18,58 m	(IV)	16	14,74	11,45	9,26	7,69	6,62	6,12	5,60	5,29	4,87								
8 t. ÷ 37,98 m	(II)	8	8	8	8	8	7,66	7,14	6,6										
16 t. ÷ 19,26 m	(IV)	16	15,34	11,93	9,66	8,04	6,93	6,41	5,87										
8 t. ÷ 38,62 m	(II)	8	8	8	8	8	7,8												
16 t. ÷ 19,58 m	(IV)	16	15,63	12,16	9,85	8,20	7,07												

## H20

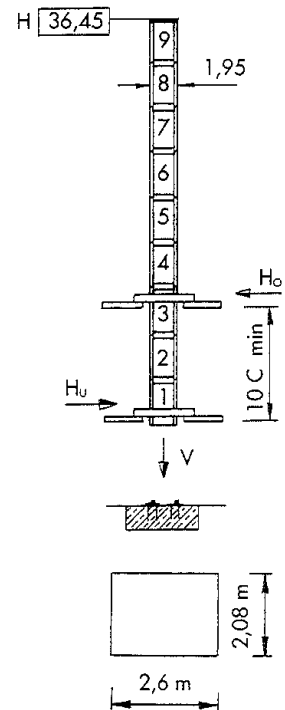


<b>P1</b>	125 t*	130 t*
	98 t	

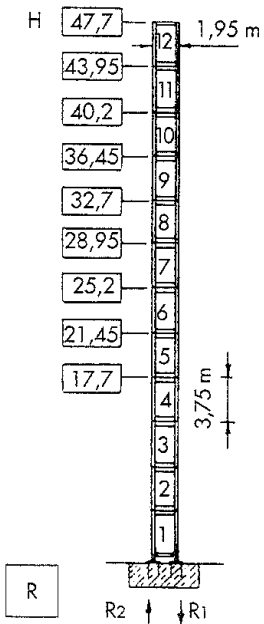


<b>P1</b>	132,6 t*	147,8 t*
<b>P2</b>		16,7 t*
	105 t	

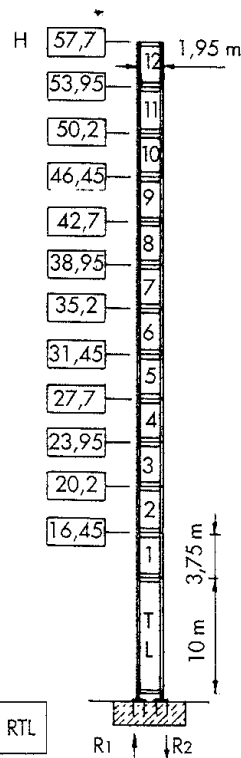
## CLIMBING H20



<b>H</b> m	32,70	36,45
<b>C min</b> m	9,0	10,0
<b>Ho*</b> t	39,0	36,3
<b>Hu*</b> t	36,2	33,3
<b>V*</b> t	118,1	121,0
<b>Ho'</b> t	28,3	31,4
<b>Hu'</b> t	14,2	16,4
<b>V'</b> t	94,1	97



<b>R1</b>	190 t*	191 t*
<b>R2</b>	131 t*	137 t*
	82 t	



<b>R1</b>	203 t*	261 t*
<b>R2</b>	140 t*	204 t*
	88 t	










Potenza elettrica richiesta Required electric power
*110 kVA
*125 kVA

Argani Winches
75 AWL 80 HC
90 AWL 80 HC

Corrente trifase Three-phase current
400 V - 50 Hz
400 V - 50 Hz

\* Gru senza traslazione - Crane without travelling system

Opzioni Argani - Winch options		m/min	f	kW	
75 AWL 80 HC		0 → 36	8	75	440 m max > 440 m consultateci consult us
		0 → 50	5,7		
		0 → 68	4		
		0 → 94	2,8		
		0 → 110	1		
		0 → 18	16		
		0 → 25	11,4		
		0 → 34	8		
		0 → 47	5,6		
		0 → 55	2		
90 AWL 80 HC		0 → 46	8	90	440 m max > 440 m consultateci consult us
		0 → 62	5,6		
		0 → 85	3,95		
		0 → 118	2,7		
		0 → 136	1		
		0 → 23	16		
		0 → 31	11,2		
		0 → 42,5	7,9		
		0 → 59	5,4		
		0 → 68	2		

Carrello - Trolley 	DSR 3 75	12-36-72 m/min	2,5/4 kW
Rotazione standard - Standard slewing 	RVP	0÷0,7 r.p.m.	3 x 7,5 kW
Traslazione - Travelling  R ≥ 12m	TAD 4G 1 4	24 m/min	4 x 4 kW

CT 703 30-160



**Gru Comedil spa**  
Via S. Egidio 42/A - 33074 Fontanafredda (Pn) - Italy  
Tel. 0434/997580 - Telefax 0434/998631  
Internet e-mail: comedil@tolomeo.it  
Internet home page: <http://www.tolomeo.it/comedil>

In accordo con le normative C.E.E. 87/405 riguardanti il livello acustico.  
In accordance with C.E.E. standards 87/405 for the acoustic level.

