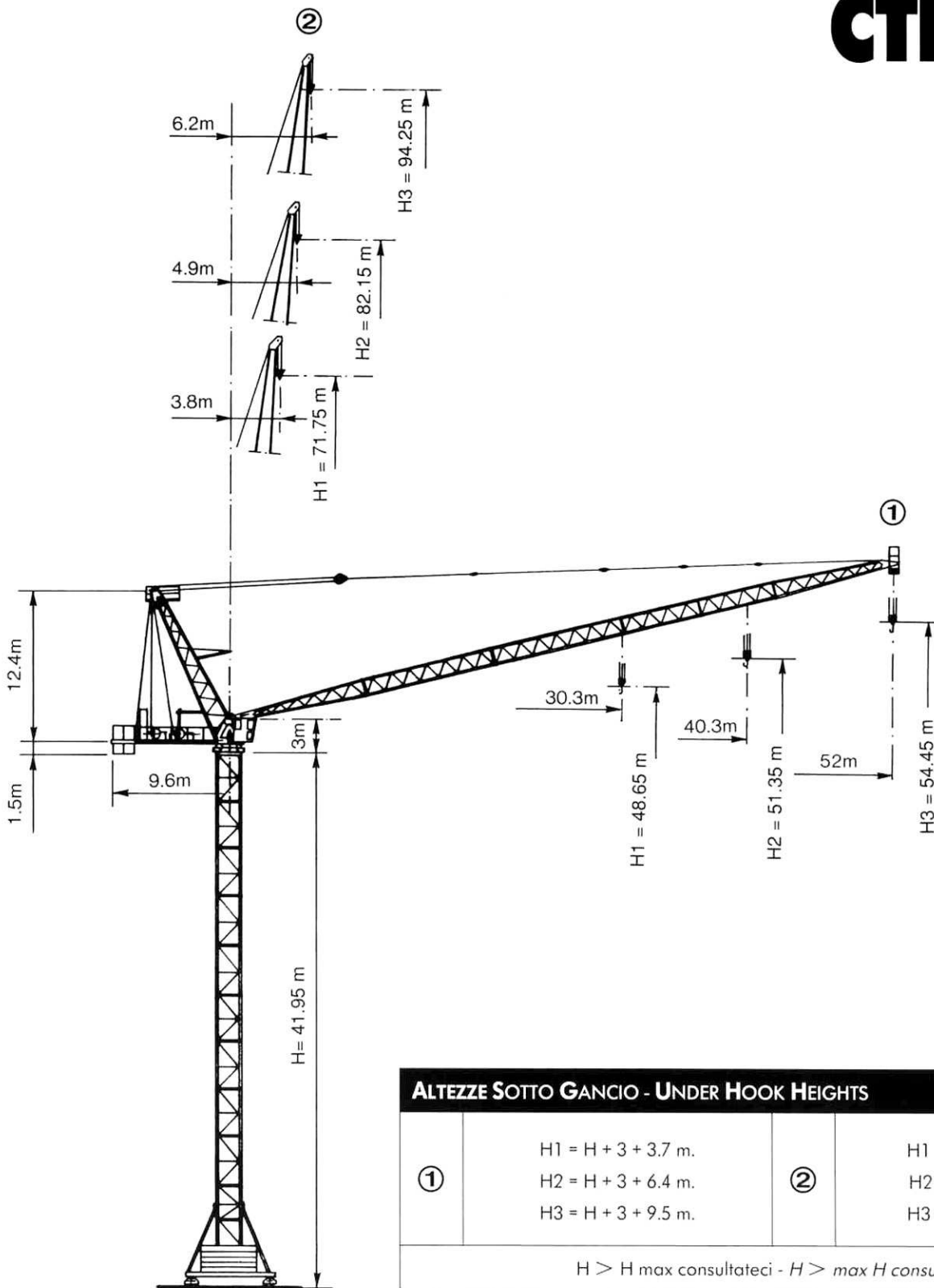


**GRU A TORRE
A BRACCIO
IMPENNABILE**

**LUFFING BOOM
CRANE**

CTL 202

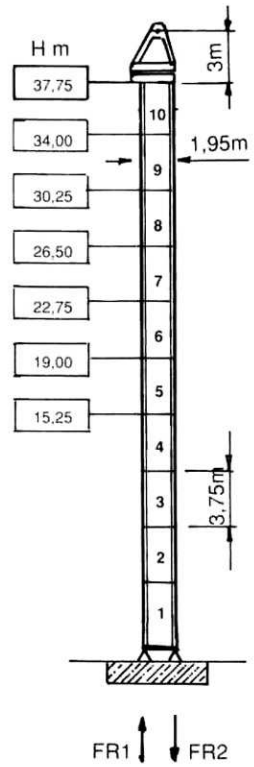
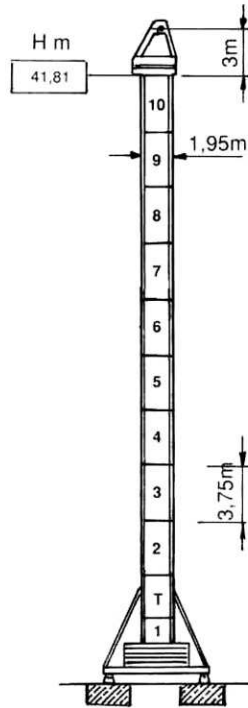
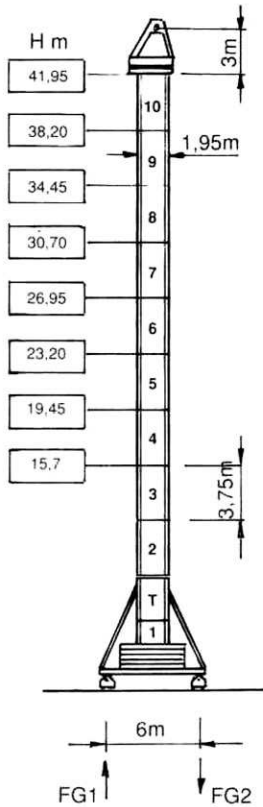



ALTEZZE SOTTO GANCIO - UNDER HOOK HEIGHTS

ALTEZZE SOTTO GANCIO - UNDER HOOK HEIGHTS	
①	$H1 = H + 3 + 3.7 \text{ m.}$ $H2 = H + 3 + 6.4 \text{ m.}$ $H3 = H + 3 + 9.5 \text{ m.}$
②	$H1 = H + 3 + 26.8 \text{ m.}$ $H2 = H + 3 + 37.2 \text{ m.}$ $H3 = H + 3 + 49.3 \text{ m.}$
$H > H \text{ max consultateci} - H > \text{max } H \text{ consult us}$	

SBRACCI E PORTATE - RADIUS AND CAPACITY

		m																
		15	18	21	24	27	30.3	32	34	36	38	40.3	42	44	46	48	50	52
8 t. ÷ 26.2 m.	(II)	8	8	8	8	7.66	6.59	6	5.48	5.01	4.6	4.23	3.9	3.6	3.33	3.09	2.88	2.7
16 t. ÷ 15 m.	(IV)	16	13	10.71	8.99	7.66	6.59	6	5.48	5.01	4.6	4.23	3.9	3.6	3.33	3.09	2.88	2.7
8 t. ÷ 28.7 m.	(II)	8	8	8	8	8	7.6	6.98	6.44	5.97	5.55	5.19						
16 t. ÷ 16 m.	(IV)	16	14.2	11.8	10	8.69	7.6	6.98	6.44	5.97	5.55	5.19						
8 t. ÷ 31 m.	(II)	8	8	8	8	8	8											
16 t. ÷ 17 m.	(IV)	16	15.1	12.6	10.8	9.48	8.38											



FG1	*	24,5 t
FG2	88 t *	103 t
	63 t	



peso gru senza zavorra
max H max sbraccio.




Weight without ballast,
max height max jib length.

* In servizio vento 72 Km/h

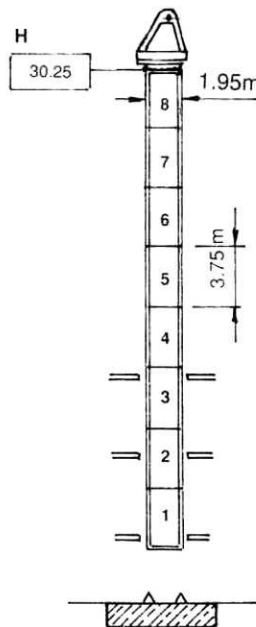
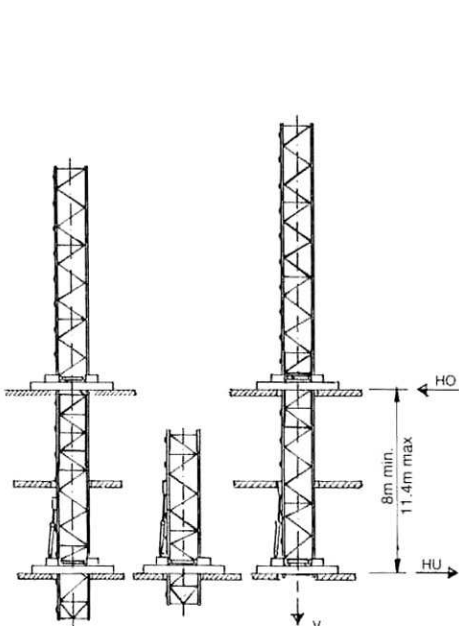
* In service wind 44,7 stat miles/h

* Fuori servizio vento 170 Km/h

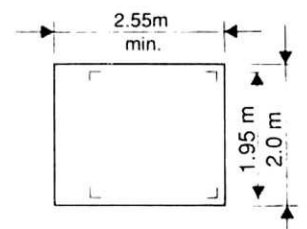
* Out of service wind 105 stat miles/h

FR1	95,8 t *	133,2 t
FR2	143,2 t *	170,2 t
	57,9 t	

VERSIONE CLIMBING - CLIMBING VERSION








Ho	53 t
Hu	42,1 t
V	99,8 t *

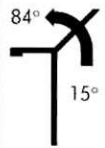







POTENZA TOTALE RICHIESTA NECESSARY POWER SUPPLY
160 Kw
200 Kw
240 Kw

ARGANI WINCHES
AWLR 758 + AWLR 758
AWLR 758 + AWLR 1208
AWLR 1208 + AWLR 1208

CORRENTE TRIFASE THREE-PHASE CURRENT
380 ÷ 440 V
50 ÷ 60 Hz

ARGANI SOLLEVAMENTO HOIST WINCHES		m/min.	t.	Hp	Kw	
AWLR 758		0 → 35	8	75	55	460 m max
		0 → 46	6			
		0 → 60	4,7			
		0 → 90	3,1			
		0 → 17,5	16			> 460 m consultateci consult us
		0 → 23	12			
		0 → 30	9,4			
		0 → 45	6,2			
AWLR 1208		0 → 54	8	120	88	460 m max
		0 → 72	6			
		0 → 96	4,5			
		0 → 136	3,2			
		0 → 27	16			> 460 m consultateci consult us
		0 → 36	12			
		0 → 48	9			
		0 → 68	6,4			

BRANDEGGIO LUFFING	758		AWLR	120 sec.	75 HP	55 Kw
	1208			75 sec.	120 HP	88 Kw
ROTAZIONE STANDARD STANDARD SLEWING			GVP	0 - 0,8 n/min.	2 x 7,5 HP	2 x 5,5 Kw
TRASLAZIONE			TR	12 - 24 m/min.	2 x 3,7 Kgm	2 x 6 Kw
TRAVELLING	R 12 m. 		TC	12 - 24 m/min.	2 x 3,7 Kgm	2 x 6 Kw

In accordo con le normative C.E.E. 87/405 riguardanti il livello acustico.
In accordance with C.E.E. standards 87/405 for the acoustic level.



Via S. Egidio 42/A - 33074 Fontanafredda (PN) - ITALY
Tel. 0434/997580 - Telex 450256 GRUCOM I - Telefax 0434 - 998631

CASAGRANDE GROUP

AGENTE/DEALER

Courtesy of Crane.Market