

# Luffing Tower Crane





# Company Profile



**China National Building Materials (Group) Corporation (CNBM)**, established in 1984, now is one of the largest state-owned group corporation in China, dealing with building materials & industrial equipment. Up to year 2009, CNBM Group's total asset is 13.5 billion USD and total staff is 80,000.

**CNBM International Corporation**, specializes in designing & manufacturing of various kinds of construction machinery, including tower crane, building hoist, etc. All the equipment produced by CNBM are compliant with the National level quality standard, and wins great reputation for their enduring performance in worldwide markets.

## Key reason for CNBM's achievements:

### • Research and Development (R&D)

- Our own systems of production engineering.
- Production design from the concept to the engineering details.
- National level research academy for various building equipment for over 30 years.
- Continuous development of new solutions and products adapted to the requirements of our clients.
- Technical experts with abundant experience in relative fields.

### • Production

- Complete quality control system.
- Nearly 20 years experiences in manufacturing fields.
- Full production capacity up to 800 tower cranes annually (with various load from 4tons to 25tons ).

### • Commercial & marketing

- Customer-oriented philosophy.
- Full international business experiences.
- Global network & localization strategy.
- Professional & high efficiency team.

### • Service

Under the guidance of "globalization + localization" strategy, in most of our main markets, the marketing operations & after sales services are carried out by CNBM's local partner companies.

To provide enough & timely support to the local partners, CNBM has set up 6 branches in the world (with more to c, ensuring the best services to the end-users along with high quality equipment.

## Our Service Branch

CNBM INTERNATIONAL CORPORATION U.A.E BRANCH

CNBM INTERNATIONAL CORPORATION K.S.A BRANCH

CNBM INTERNATIONAL CORPORATION IRAN BRANCH

CNBM (U.S.A) CORPORATION

CNBM INTERNATIONAL(RUSSIA)CORPORATION

CNBM INDIA CORPORATION

CNBM NIGERIA CORPORATION

CNBM KAZAKHSTAN BRANCH

UNDER CONSTRUCTION OTHER PLACES

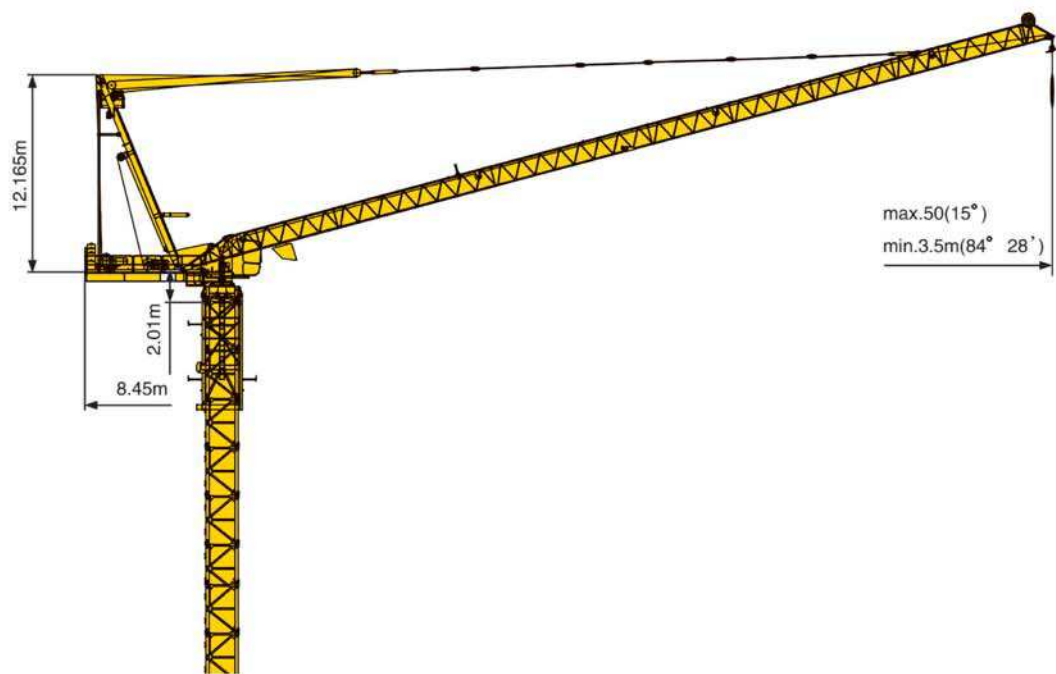


# Luffing Tower Crane







luffing Tower crane TCD160-Max Load 10ton



载荷特性表 Load Diagram

Jib m	倍率 Fall	R(Cmax) m	C(max) t	20	25	30	35	40	45	50
50	Ⅳ	20.0	10.0	10.0	7.50	6.00	4.90	4.10	3.50	3.00
	Ⅱ	35.0	5.00	5.00	5.00	5.00	5.00	4.30	3.70	3.20
45	Ⅳ	20.0	10.0	10.0	7.70	6.20	5.10	4.20	3.60	
	Ⅱ	35.0	5.00	5.00	5.00	5.00	5.00	4.40	3.80	
40	Ⅳ	20.0	10.0	10.0	7.80	6.20	5.10	4.30		
	Ⅱ	37.0	5.00	5.00	5.00	5.00	5.00	4.50		
35	Ⅳ	20.0	10.0	10.0	8.00	6.40	5.30			
	Ⅱ	35.0	5.00	5.00	5.00	5.00	5.00			
30	Ⅳ	20.0	10.0	10.0	8.10	6.50				
	Ⅱ	30.0	5.00	5.00	5.00	5.00				

工作速度 Speed(380v-50Hz)

起升 Hoisting 51.5Kw			
Pmax		5.00-10.00(t)	
	Load(t)	5.00	2.5
	V(m/min)	50	100
	Load(t)	10	5.0
	V(m/min)	25	50
容绳量 Drum Capacity		550m	

	拉臂 Luffing	回转 Slewing
Motor	30Kw	2X9Kw
V	≤3min	0.7rpm



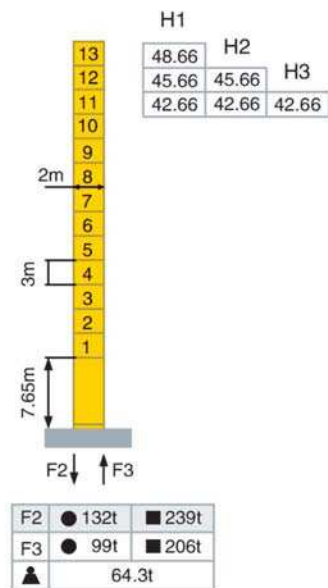
CNBM

CNBM International Corporation

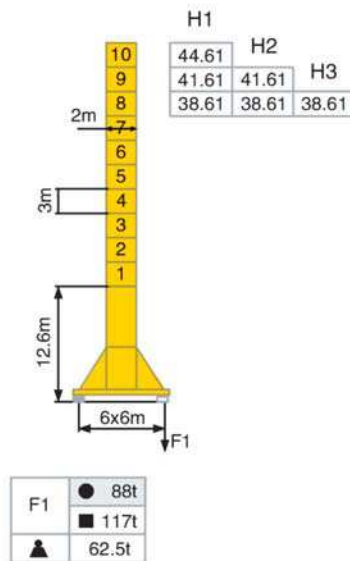
# Luffing Tower crane TCD160-Max Load 10ton

塔身 Mast 2m×2m 反力 Reactions

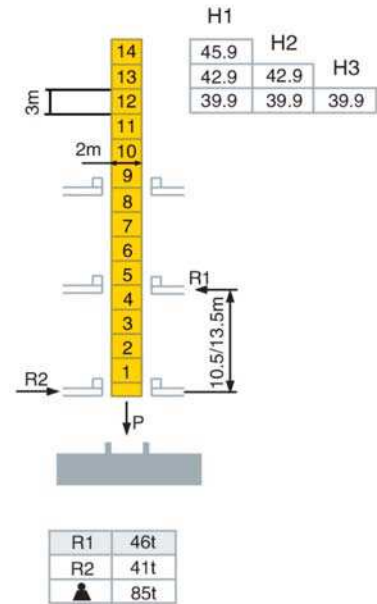
固定式 Stationary



行走式 Travelling



内爬式 Internal Climbing



臂jib H1、H2、H3分别代表幅度为30~35m,40~45m,50m时臂根铰点高度

H1、H2、H3 is relatively for the height under hinge with a jib radius of 30~35m,40~45m,50m

● :工作状态 In service

■ :非工作状态 Out of service

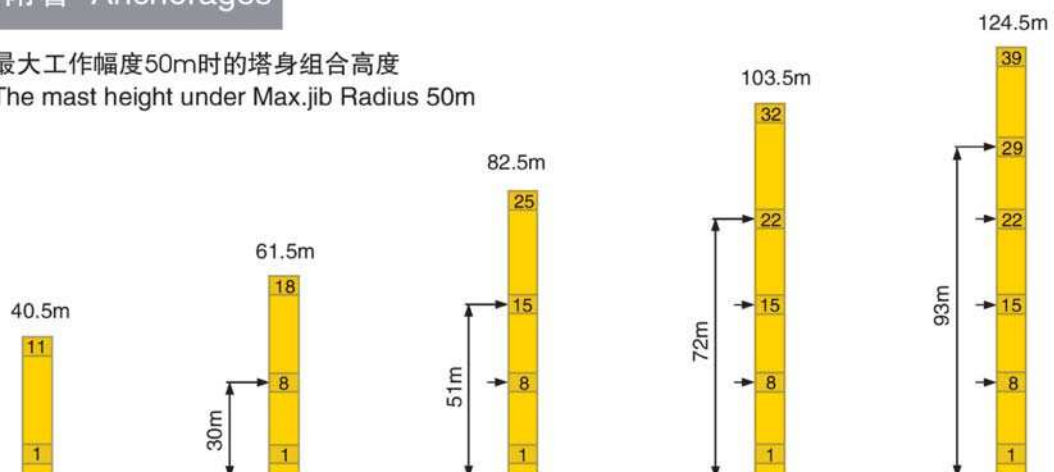
▲ :无吊载、无配重、最长起重臂和最大高度时的自重

Without load and ballast with longest jib and maximal height

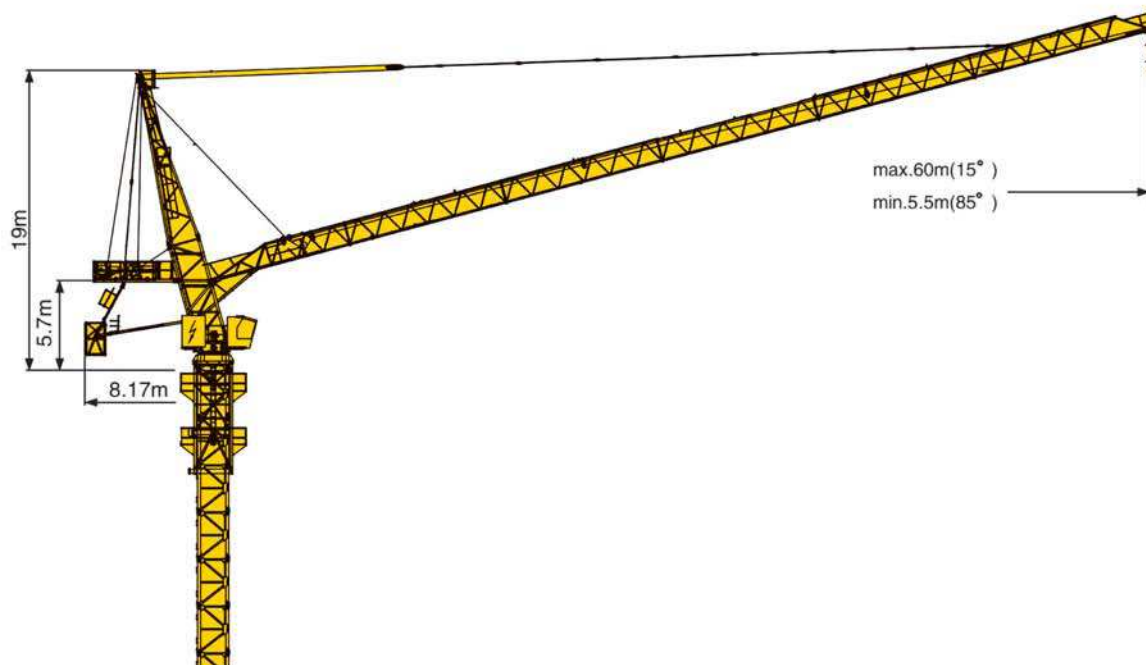
## 附着 Anchorages


最大工作幅度50m时的塔身组合高度

The mast height under Max.jib Radius 50m



# luffing Tower crane TCD260-Max Load 16ton



机构特性 Mechanism						Drum Capacity	Motor
	m/min	32	64	16	32	600m >600m*	75Kw
	t	8.00	4.00	16.0	8.00		
	1 min 40 S						55Kw
	r/min	0.7					2X9Kw
	m/min	12.5/25					4X1.7/3.4Kw
Mains	380V(± 10%) 50Hz 180Kw						

载荷特性表 Load Diagram

Jib m	倍率 Fall	R(Cmax) m	C(max) t	15	20	25	30	35	40	45	50	55	60
60	IV	-	-	-	-	-	-	-	-	-	-	-	-
	II	22.8	8.00	8.00	8.00	7.33	6.15	5.21	4.52	3.98	3.55	3.21	2.90
50	IV	15.7	16.00	16.00	13.75	10.66	8.60	7.12	6.02	5.28	4.70		
	II	31.2	8.00	8.00	8.00	8.00	8.00	7.14	6.22	5.48	4.90		
40	IV	17.3	16.00	16.00	13.98	11.27	9.05	7.92	6.70				
	II	34.5	8.00	8.00	8.00	8.00	8.00	7.89	6.90				
30	IV	18.1	16.00	16.00	14.20	11.88	9.50						
	II	30.0	8.00	8.00	8.00	8.00	8.00						



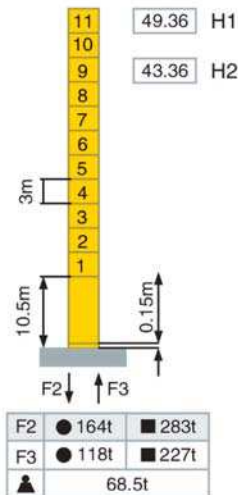
CNBM

CNBM International Corporation

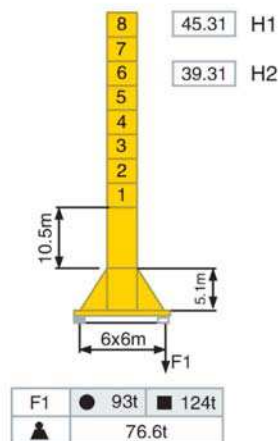
# Luffing Tower crane TCD260-Max Load 16ton

塔身 Mast ▽ 2m×2m 反力 Reactions

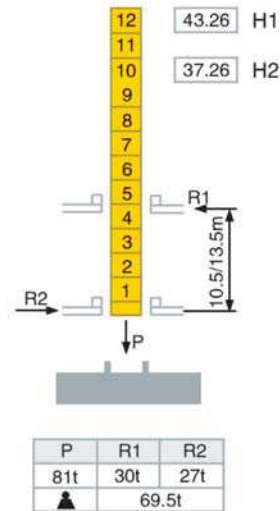
固定式 Stationary



行走式 Travelling



内爬式 Internal Climbing



注：1) H1代表臂架幅度为30-40m时的塔身组合中臂根铰点处所能达到的最大高度  
Remarks: H1 represents for the Max. height under hinge with 30-40m's jib radius  
H2代表臂架幅度为50-60m时的塔身组合中臂根铰点处所能达到的最大高度  
H2 represents for the Max. height under hinge with 50-60m's jib radius

2) ● 工作状态 In service

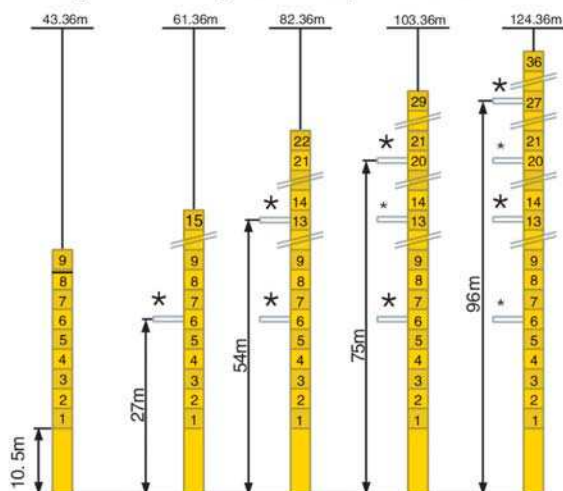
3) ■ 非工作状态 Out of service

4) ▲ 无吊载、无配重、最长起重臂和最大高度时的自重

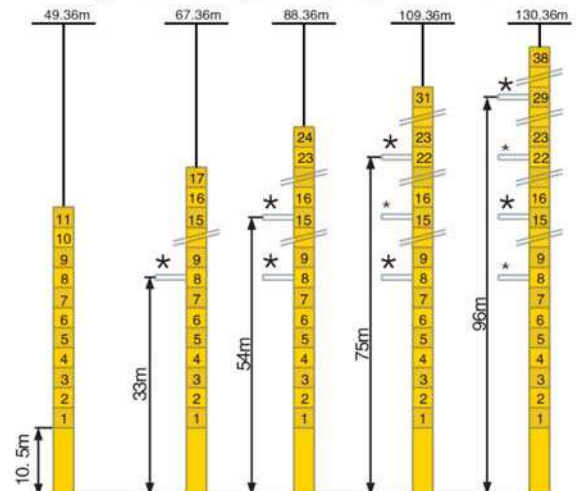
Without load and ballast with longest jib and maximal height

## 附着 Anchorages

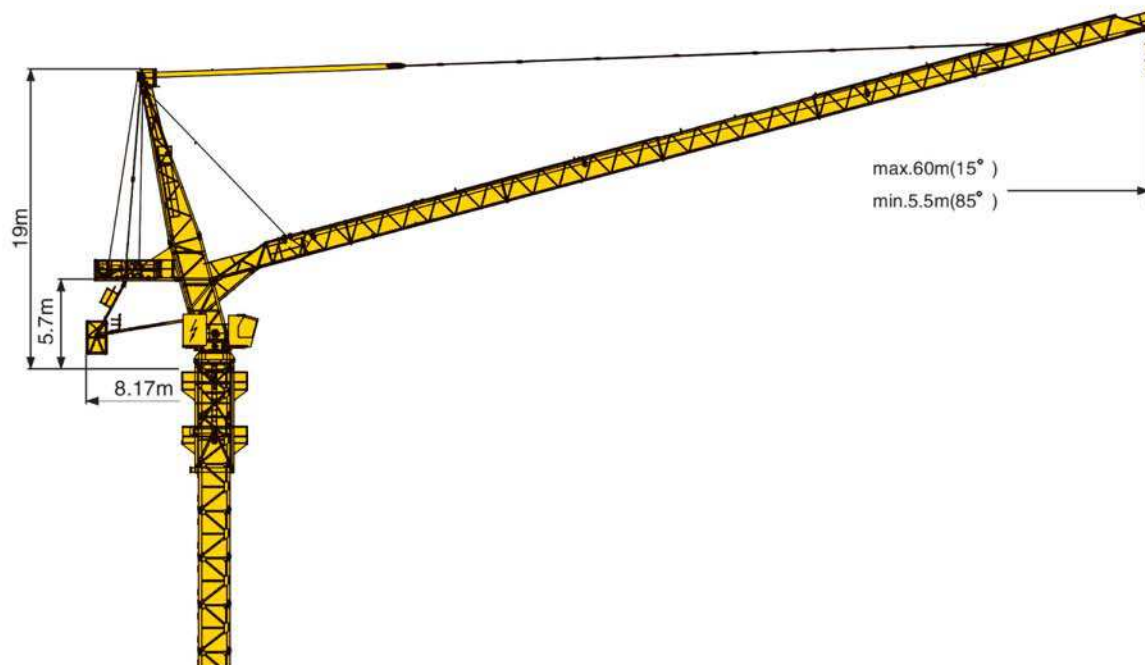
最大工作幅度50-60m时的臂根铰点高度  
Height under hinge with Max.jib radius 50-60m



最大工作幅度30-40m时的臂根铰点高度  
Height under hinge with Max.jib radius 30-40m



# luffing Tower crane TCD300-Max Load 16ton



机构特性 Mechanism						Drum Capacity	Motor
	m/min	30	60	15	30	600m >600m*	90Kw
	t	8.00	4.00	16.0	8.00		
	1 min 40 S						55Kw
	r/min	0-0.7					2X9Kw
	m/min	12.5/25					4X1.7/3.4Kw
Mains	380V(± 10%) 50Hz 180Kw						

载荷特性表 Load Diagram

Jib m	倍率 Fall	R(Cmax) m	C(max) t	15	20	25	30	35	40	45	50	55	60
60	IV	-	-	-	-	-	-	-	-	-	-	-	-
	II	29.1	8.00	8.00	8.00	8.00	7.75	6.58	5.72	5.05	4.51	4.08	3.70
50	IV	18.7	16.0	16.0	14.87	11.78	9.72	8.24	7.14	6.28	5.60		
	II	36.9	8.00	8.00	8.00	8.00	8.00	8.00	7.34	6.48	5.80		
40	IV	20.7	16.0	16.0	16.0	13.15	10.86	9.22	8.00				
	II	40.0	8.00	8.00	8.00	8.00	8.00	8.00	8.00				
30	IV	21.5	16.0	16.0	16.00	13.68	11.30						
	II	30.0	8.00	8.00	8.00	8.00	8.00						





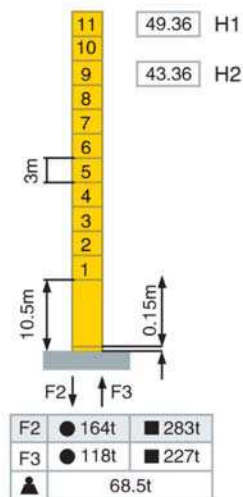
CNBM

CNBM International Corporation

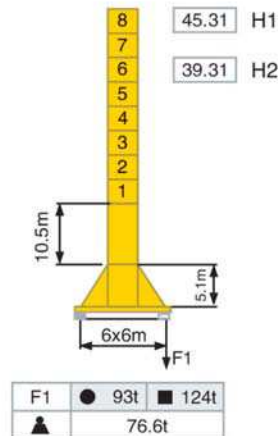
# Luffing Tower crane TCD300-Max Load 16ton

塔身 Mast ▽ 2m×2m 反力 Reactions

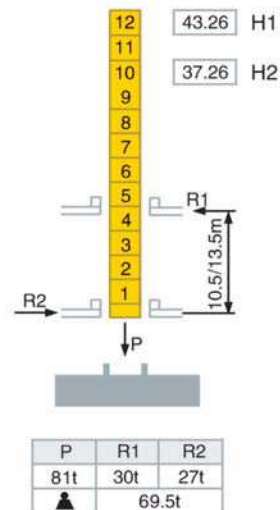
固定式 Stationary



行走式 Travelling



内爬式 Internal Climbing

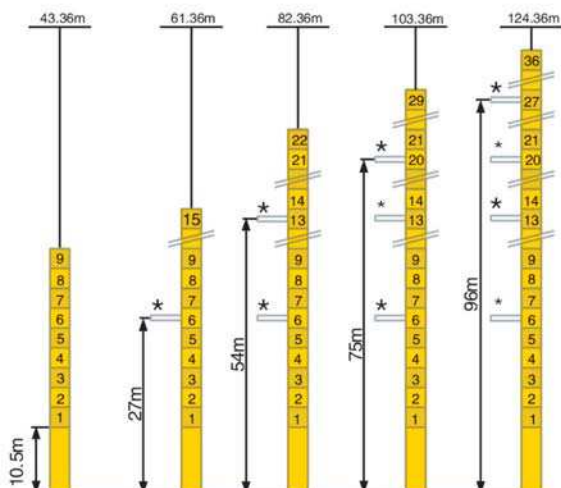


注：1) H1代表臂架幅度为30-40m时的塔身组合中臂根铰点处所能达到的最大高度  
Remarks: H1 represents for the Max. height under hinge with 30-40m's jib radius  
H2代表臂架幅度为50-60m时的塔身组合中臂根铰点处所能达到的最大高度  
H2 represents for the Max. height under hinge with 50-60m's jib radius

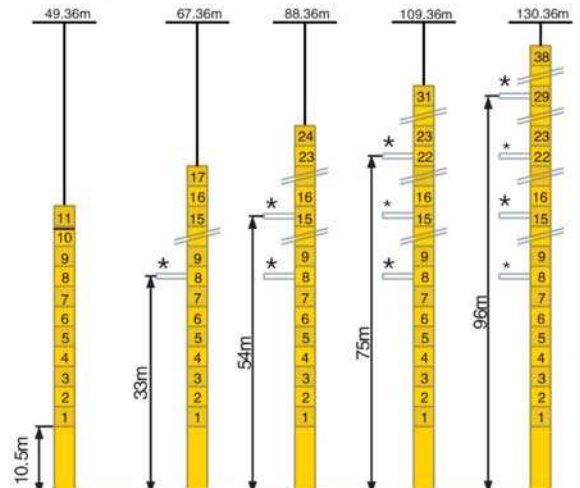
- 2) ● 工作状态 In service  
3) ■ 非工作状态 Out of service  
4) ▲ 无吊载、无配重、最长起重臂和最大高度时的自重  
Without load and ballast with longest jib and maximal height

## 附着 Anchorages

最大工作幅度50-60m时的臂根铰点高度  
Height under hinge with Max.jib radius 50-60m



最大工作幅度30-40m时的臂根铰点高度  
Height under hinge with Max.jib radius 30-40m





## **Los Angeles, U.S.A.**

Contact person: Ms. Lina  
Mobile: 001-626 715 6060  
Tel: 001-626-8106368  
Fax: 001-626-8106853  
E-mail: linazhang@icnbnm.com

## **Dubai, U.A.E.**

Contact person: Mr. Eric  
Mobile: 00971 50 8606948  
Tel: 00971 4 3746752  
Fax: 00971 4 3746104  
E-mail: ericfu@icnbnm.com

## **Riyadh, Saudi Arabia**

Contact person: Mr. Cosmo  
Mobile: 00966-53-2595202  
Tel: 00966 1 4611362  
Fax: 00966 1 4611279  
E-mail: cosmovwang@icnbnm.com

## **Tehran, Iran**

Contact person: Mr. Salih  
Mobile: 0098 912 5491885  
Tel: 0098 21 44400427  
Fax: 0098 21 44401884  
E-mail: salihma@icnbnm.com

## **Moscow, Russia**

Contact person: Mr. Eddie  
Mobile: 007 926 0196403  
Tel: 007 495 3434330  
Fax: 007 495 7480366  
E-mail: eddiewu@icnbnm.com

# Topless Tower Crane

# Luffing Tower Crane



**CNBM INTERNATIONAL CORPORATION**

Floor 17th, NO.4 Building, Zhuyu Business Center,  
NO.9 Shouti South Road, Haidian District, Beijing 100048, China.

Tel: 010 6879 6346

Fax: 010 6879 6677

E-mail: [cnbmmech@icnbn.com](mailto:cnbmmech@icnbn.com)

Website: [www.cmaxmachinery.com](http://www.cmaxmachinery.com)

---



CNBM

CNBM International Corporation