



China National Building Materials (Group) Corporation (CNBM), which is established in 1984, is one largest state-owned group corporation of building & mechanical materials with a total asset of 25 billion RMB and a staff of 30,000. CNBM International Corporation, which is one leading subsidiary of CNBM Group, specializes in the design, manufacture construction machinery like tower Crane. And we have passed ISO 9001:2000 quality certificate and certified by all relevant authorities.

The key functional areas of CNBM are:

• Research and Development (R&D)

- Our own systems of production engineering.
- Production design from the concept to the engineering details.
- Technical experts with great experience in the sector.
- Continuous development of new solutions and products adapted to the requirements of our clients.
- Definition and initiation of the required technical assistance
- Methodology and project procedure administration in compliance with current guidelines.

• Production

- On-premises assembly and 100% product testing prior to shipment.
- Production planning controlled by advanced administration systems.

• Commercial and marketing aspects

- Putting the client first
- Extensive worldwide commercial network.
- CNBM has a clear aim to create and develop long-lasting and mutually beneficial relations with our clients. CNBM offers the client outstanding quality of service, continuous improvement together with constant support to assist the client's development and growth

• Service

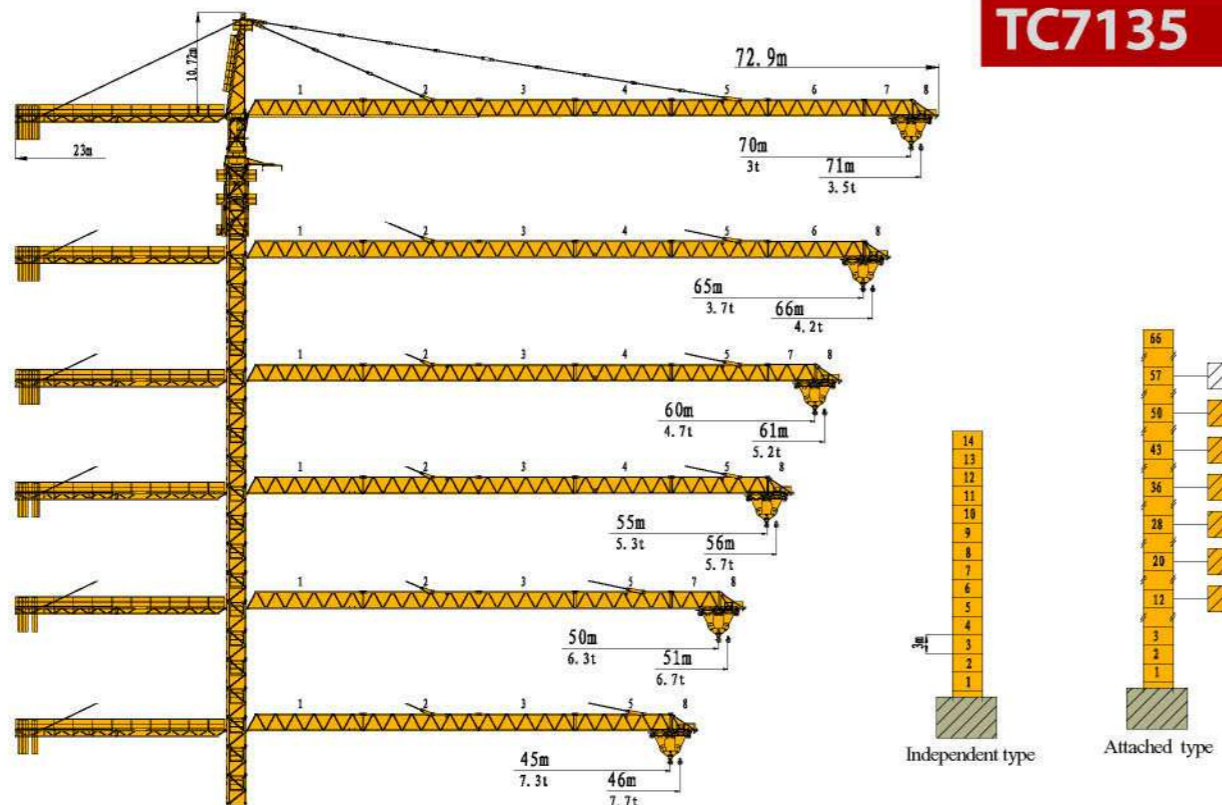
At CNBM we consider it impossible to do business without offering the best service. The principle aim of CNBM is to offer the best product while, at the same time, maintaining the highest level of customer service. This is established by means of a network of distribution points with the ability to maintain and improve on these principles of client satisfaction.

Our Service Branch

CNBM INTERNATIONAL CORPORATION U.A.E BRANCH
CNBM INTERNATIONAL CORPORATION K.S.A BRANCH
CNBM INTERNATIONAL CORPORATION IRAN OFFICE
CNBM (U.S.A) CORPORATION
CNBM INTERNATIONAL(RUSSIA)CORPORATION
UNDER CONSTRUCTION OTHER PLACES



TC7135



LIFTING CAPACITY

Jib Length 70m SINGLE TROLLEY						
Radius (m)	4.7~35.36	40	50	60	70	71
2 Falls (kg)	8000	6960	5370	4320	3560	3500
Jib Length 70m DOUBLE TROLLEYS						
Radius (m)	3.7~18.3	30	40	50	60	70
4 Falls (kg)	16000	9120	6440	4840	3760	3000
Jib Length 65m DOUBLE TROLLEYS						
Radius (m)	3.7~19.55	25	35	45	55	65
4 Falls (kg)	16000	12160	8240	6050	4660	3700
Jib Length 60m DOUBLE TROLLEYS						
Radius (m)	3.7~21.45	30	40	50	60	
4 Falls (kg)	16000	10990	7840	5960	4700	
Jib Length 55m DOUBLE TROLLEYS						
Radius (m)	3.7~21.54	35	45	55		
4 Falls (kg)	16000	9240	6830	5300		
Jib Length 50m DOUBLE TROLLEYS						
Radius (m)	3.7~22.4	30	40	50		
4 Falls (kg)	16000	11560	8270	6300		
Jib Length 45m DOUBLE TROLLEYS						
Radius (m)	3.7~22.74	35	45			
4 Falls (kg)	16000	9840	7300			

- Max. working range 71m, tip lifting weight 3.5T and Max lifting weight 16T.
- Hoisting mechanism, slewing mechanism and trolleying mechanism all take VVVF+PLC technical control. Provide stepless speed regulation, operation stability and reliability.
- Take double-trolley type, greatly enhance lifting performance

TC7135 SPECIFICATION

Item	Parameter					
	2 Falls		4 Falls			
Max Lifting Moment (T.M)	250					
Working range (M)	4.7~71		3.7~70			
Jib length can be adjusted (M)	45;50; 55; 60;65;70					
Lifting weight at tip (T)	3.5		3			
Max. Lifting weight (T)	16					
Rated capacity	Radius (m)	2-35.4		2-18.3		
	Lifting capacity (T)	8		16		
	Radius (m)	35.4-71		18.3-70		
	Lifting capacity (T)	8-3.5		16-3		
Lifting Height(M)	Independent	43				
	Attachment	270		135		
Mechanism	Hoisting (VVVF+PLC)	Lifting capacity (T)	0-4	0-8	0-8	0-16
		Speed (m/min)	0-96	0-52	0-48	0-26
		Motor	Y280M-4		90KW	
	Trolleying (VVVF+PLC)	Speed (m/min)	0~60			
		Motor	YLEJ112M-4		5.5KW	
	Slewing (VVVF+PLC)	Speed(r/min)	0~0.6			
		Motor	YLEW112M-4		95N.m	
	Climbing speed (m/min)		0.5			
Counter weight (kg)		28000				
Mast (mm)		(L × W × H) 2000×2000×3000				
Working temperature (°C)		-20°~+60°				
Max. wind-level (Grade)		6				

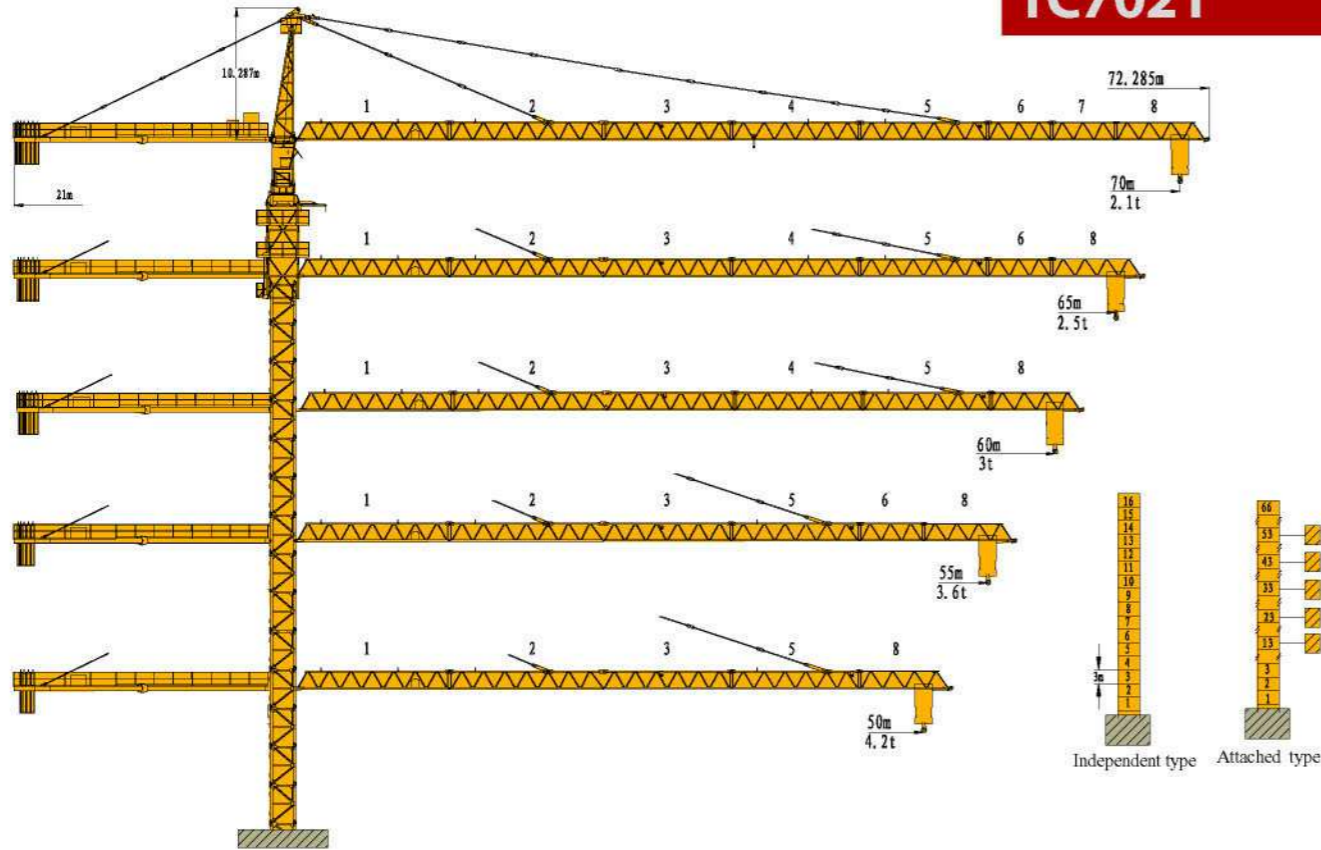
Safety Monitor & Management System

Our tower crane is equipped with Safety Monitor & Management System. It can do:

- Keep records of 1600 working recycles
- Auto-reject misoperation and keep the record
- LCD display working condition for avoiding misoperation
- CAN based communication
- Non-contact measurement, easily fixed
- Overload protection



TC7021



LIFTING CAPACITY

Jib Length 70m							
Radius (m)	2~18.4	20	30	40	50	60	70
2 Falls (kg)	6000	6000	6000	4670	3460	2670	2100
4 Falls (kg)	12000	10900	6700	4670	3460	2670	2100
Jib Length 65m							
Radius (m)	2~19.2	30	40	50	60	65	
2 Falls (kg)	6000	6000	4800	3600	2800	2500	
4 Falls (kg)	12000	6900	4800	3600	2800	2500	
Jib Length 60m							
Radius (m)	2~19.9	30	40	50	60		
2 Falls (kg)	6000	6000	5170	3860	3000		
4 Falls (kg)	12000	7380	5170	3860	3000		
Jib Length 55m							
Radius (m)	2~20.7	25	35	45	55		
2 Falls (kg)	6000	6000	6000	4700	3600		
4 Falls (kg)	12000	9640	6440	4700	3600		
Jib Length 50m							
Radius (m)	2~21.1	30	40	50			
2 Falls (kg)	6000	6000	5600	4200			
4 Falls (kg)	12000	7950	5600	4200			

- Max. working range 70m, tip lifting weight 2.1T and Max lifting weight 12T.
- Hoisting mechanism, slewing mechanism and trolleying mechanism all take VVVF+PLC technical control. Provide stepless speed regulation. Outstanding in working efficiency, operation stability and reliability, Reduce future maintenance cost.

TC7021 SPECIFICATION

Item	Parameter					
	2 Falls		4 Falls			
Max Lifting Moment (T.M)	200					
Working range (M)	2~70					
Jib length can be adjusted (M)	50; 55; 60;65;70					
Lifting weight at tip (T)	2.1					
Max. Lifting weight (T)	12					
Rated capacity	Radius (m)	2-33		2-18.4		
	Lifting capacity (T)	6		12		
	Radius (m)	33-70		18.4-70		
	Lifting capacity (T)	6-2.1		12-2.1		
Lifting Height(M)	Independent	50				
	Attachment	200	100			
Mechanism	Hoisting (VVVF+PLC)	Lifting capacity (T)	0-3	0-6	0-6	0-12
		Speed (m/min)	0-93	0-57	0-47	0-29
		Motor	Y280S-4		75KW	
	Trolleying (VVVF+PLC)	Speed (m/min)	0~60			
		Motor	YEJ132S-4		5.5KW	
	Slewing (VVVF+PLC)	Speed(r/min)	0~0.6			
		Motor	YLEW112M-6		75N.m	
	Climbing speed (m/min)	0.5				
Counter weight (kg)	23100					
Mast (L × W × H)	2000×2000×3000mm					
Working temperature (°C)	-20°~+60°					
Max. wind-level (Grade)	6					

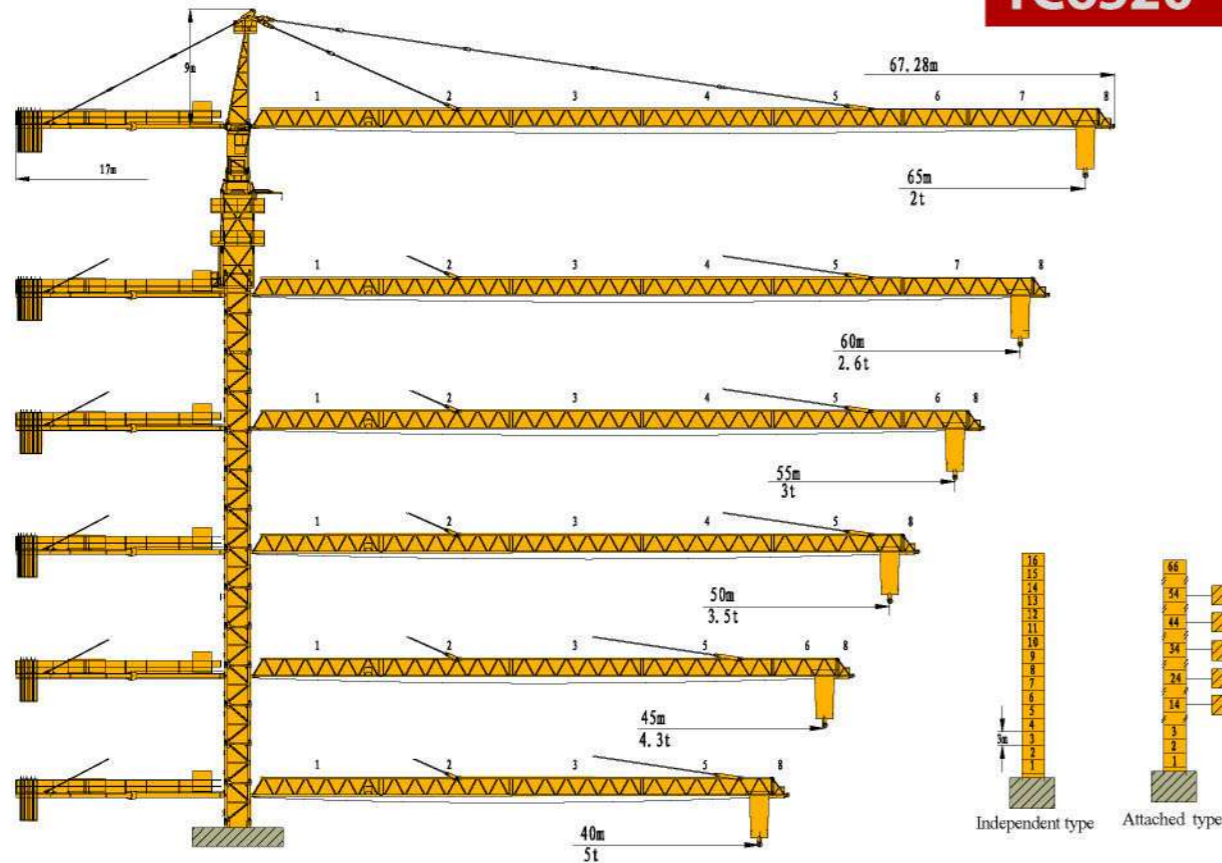
Safety Monitor & Management System

Our tower crane is equipped with Safety Monitor & Management System. It can do:

- Keep records of 1600 working recycles
- Auto-reject misoperation and keep the record
- LCD display working condition for avoiding misoperation
- CAN based communication
- Non-contact measurement, easily fixed
- Overload protection



TC6520



LIFTING CAPACITY

Jib Length 65m							
Radius (m)	2~15.7	20	30	40	50	60	65
2 Falls (kg)	12000	9038	5587	3905	2910	2252	2000
4 Falls (kg)	6000	6000	5587	3905	2910	2252	2000
Jib Length 60m							
Radius (m)	2~17.2	20	30	40	50	60	
2 Falls (kg)	6000	6000	6000	4432	3329	2600	
4 Falls (kg)	12000	10120	6295	4432	3329	2600	
Jib Length 55m							
Radius (m)	2~17.5	20	30	40	50	55	
2 Falls (kg)	6000	6000	6000	4528	3405	3000	
4 Falls (kg)	12000	10317	6424	4528	3405	3000	
Jib Length 50m							
Radius (m)	2~17.9	20	30	40	50		
2 Falls (kg)	6000	6000	6000	4647	3500		
4 Falls (kg)	12000	10561	6584	4647	3500		
Jib Length 45m							
Radius (m)	2~18.8	20	30	40	45		
2 Falls (kg)	6000	6000	6000	4976	4300		
4 Falls (kg)	12000	11237	7027	4976	4300		

- Max. working range 65m, tip lifting weight 2.0T and Max lifting weight 12T.
- Hoisting mechanism, slewing mechanism and trolleying mechanism all take VVVF+PLC technical control. Provide stepless speed regulation. Outstanding in working efficiency, operation stability and reliability, Reduce future maintenance cost.

TC6520 SPECIFICATION

Item	Parameter					
	2 Falls		4 Falls			
Max Lifting Moment (T.M)	160					
Working range (M)	2~65					
Jib length can be adjusted (M)	40;45; 50; 55; 60;65					
Lifting weight at tip (T)	2					
Max. Lifting weight (T)	12					
Rated capacity	Radius (m)	2-28		2-15.7		
	Lifting capacity (T)	6		12		
	Radius (m)	28-65		15.7-65		
	Lifting capacity (T)	6-2		12-2		
Lifting Height(M)	Independent	50				
	Attachment	200		100		
Mechanism	Hoisting (VVVF+PLC)	Lifting capacity (T)	0-3	0-6	0-6	0-12
		Speed (m/min)	0-93	0-57	0-47	0-29
		Motor	Y280S-4		75KW	
	Trolleying (VVVF+PLC)	Speed (m/min)	0~60			
		Motor	YEJ132S-4		5.5KW	
	Slewing (VVVF+PLC)	Speed(r/min)	0~0.6			
		Motor	YLEW112M-6		75N.m	
	Climbing speed (m/min)	0.5				
Counter weight (kg)	23100					
Mast (L × W × H)	2000×2000×3000mm					
Working temperature (°C)	-20°~+60°					
Max. wind-level (Grade)	6					

Safety Monitor & Management System

Our tower crane is equipped with Safety Monitor & Management System. It can do:

- Keep records of 1600 working recycles
- Auto-reject misoperation and keep the record
- LCD display working condition for avoiding misoperation
- CAN based communication
- Non-contact measurement, easily fixed
- Overload protection



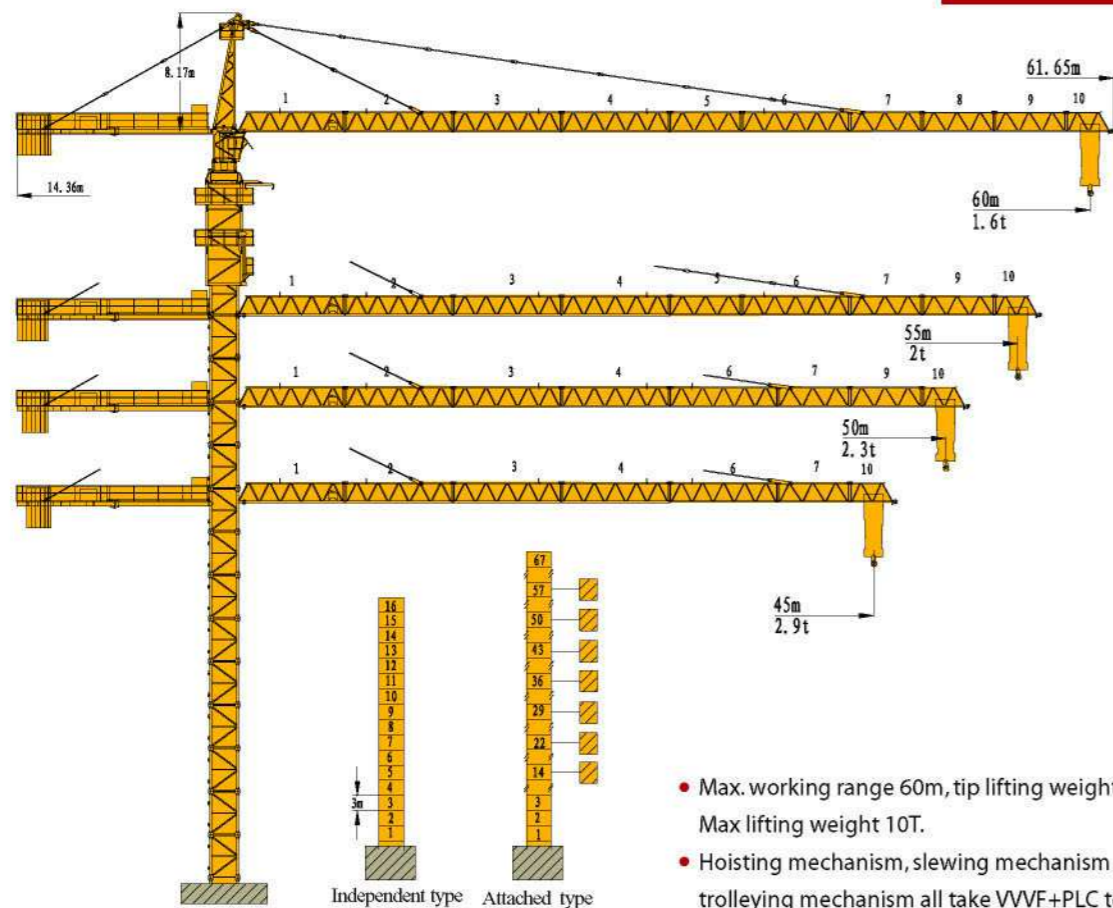
CNBM International Corporation

5th Floor, Long Bo Building, No.3 Nan Li Shi Road, Beijing 100037, China

Tel: (0086-10)68000210 Fax: (0086-10)68000260 / 68000396

Website: www.cnbmmech.com E-mail: tarek@chinacmax.com

TC6016



- Max. working range 60m, tip lifting weight 1.6T and Max lifting weight 10T.
- Hoisting mechanism, slewing mechanism and trolleying mechanism all take VVVF+PLC technical control. Provide stepless speed regulation. Outstanding in working efficiency, operation stability and reliability, Reduce future maintenance cost.

LIFTING CAPACITY

Jib Length 60m						
Radius (m)	2~13.4	20	30	40	50	60
2 Falls (kg)	5000	5000	4006.8	2803	2081.1	1600
4 Falls (kg)	10000	6413.6	4006.8	2803	2081.1	1600
Jib Length 55m						
Radius (m)	2~14.28	20	30	40	50	55
2 Falls (kg)	5000	5000	4338.6	3052.3	2280.3	2000
4 Falls (kg)	10000	6911.4	4338.6	3052.3	2280.3	2000
Jib Length 50m						
Radius (m)	2~14.37	20	30	40	50	
2 Falls (kg)	5000	5000	4371.2	3076.5	2300	
4 Falls (kg)	10000	6959.8	4371.2	3076.5	2300	
Jib Length 45m						
Radius (m)	2~15.42	20	30	40	45	
2 Falls (kg)	5000	5000	4753	3362.9	2900	
4 Falls (kg)	10000	7533.3	4753	3362.9	2900	

TC6016 SPECIFICATION

Item	Parameter					
	2 Falls		4 Falls			
Max Lifting Moment (T.M)	125					
Working range (M)	2~60					
Jib length can be adjusted (M)	45; 50; 55; 60					
Lifting weight at tip (T)	1.6					
Max. Lifting weight (T)	10					
Rated capacity	Radius (m)	2-24.9	2-13.4			
	Lifting capacity (T)	5	10			
	Radius (m)	24.9-60	13.4-60			
	Lifting capacity (T)	5-1.6	10-1.6			
Lifting Height(M)	Independent	50				
	Attachment	200	100			
Mechanism	Hoisting (VVVF+PLC)	Lifting capacity (T)	0-2.5	0-5	0-5	0-10
		Speed (m/min)	0-100	0-50	0-50	0-27
		Motor	Y225M-4		55KW	
	Trolleying (VVVF+PLC)	Speed (m/min)	0~60			
		Motor	YEJ132S-4		5.5KW	
	Slewing (VVVF+PLC)	Speed(r/min)	0~0.6			
		Motor	YLEW112M-6 75N.m			
	Climbing speed (m/min)	0.5				
Counter weight (kg)	20350					
Mast (L × W × H)	2000×2000×3000mm					
Working temperature (°C)	-20°~+60°					
Max. wind-level (Grade)	6					

Safety Monitor & Management System

Our tower crane is equipped with Safety Monitor & Management System. It can do:

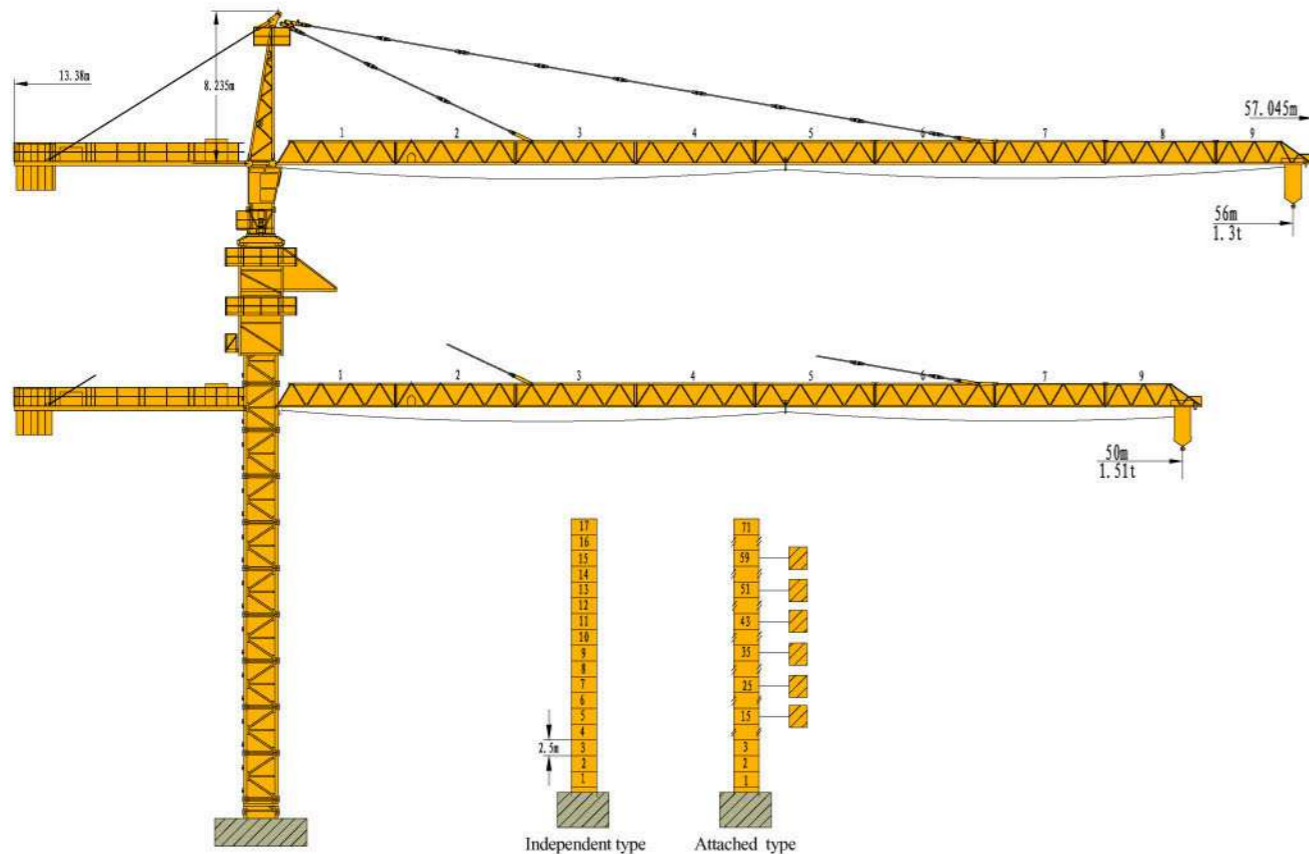
- Keep records of 1600 working recycles
- Auto-reject misoperation and keep the record
- LCD display working condition for avoiding misoperation
- CAN based communication
- Non-contact measurement, easily fixed
- Overload protection



CNBM International Corporation

5th Floor, Long Bo Building, No.3 Nan Li Shi Road, Beijing 100037, China
 Tel: (0086-10)68000210 Fax: (0086-10)68000260 / 68000396
 Website: www.cnbmmech.com E-mail: tarek@chinacmax.com

TC5613



LIFTING CAPACITY

Jib Length 56m									
Radius (m)	2~12.1	20	25	30	35	40	45	50	56
2 Falls (kg)	4000	4000	3509	2835	2359	2004	1729	1510	1300
4 Falls (kg)	8000	4533	3509	2835	2359	2004	1729	1510	1300
Jib Length 50m									
Radius (m)	2~12.1	20	25	30	35	40	45	50	
2 Falls (kg)	4000	4000	3509	2835	2359	2004	1729	1510	
4 Falls (kg)	8000	4533	3509	2835	2359	2004	1729	1510	

- Max. working range 56m, tip lifting weight 1.3T and Max lifting weight 8T.
- Hoisting mechanism, slewing mechanism and trolleying mechanism all take VVVF+PLC technical control. Provide stepless speed regulation., Outstanding in working efficiency, operation stability and reliability, Reduce future maintenance cost.

TC5613 SPECIFICATION

Item	Parameter					
	2 Falls		4 Falls			
Max Lifting Moment (T.M)	80					
Working range (M)	2~56					
Jib length can be adjusted (M)	50; 56					
Lifting weight at tip (T)	1.3					
Max. Lifting weight (T)	8					
Rated capacity	Radius (m)	2-25		2-12.1		
	Lifting capacity (T)	4		8		
	Radius (m)	22-56		12.1-56		
	Lifting capacity (T)	4-1.3		8-1.3		
Lifting Height(M)	Independent	45				
	Attachment	180	90			
Mechanism	Hoisting (VVVF+PLC)	Lifting capacity (T)	0-2	0-4	0-4	0-8
		Speed (m/min)	0-80	0-40	0-40	0-20
		Motor	Y225S-4		37Kw	
	Trolleying (VVVF+PLC)	Speed (m/min)	0~60			
		Motor	YEJ112M-4		4Kw	
	Slewing (VVVF+PLC)	Speed(r/min)	0~0.6			
		Motor	Y112M-4		2x4Kw	
	Climbing speed (m/min)	0.5				
	Counter weight (kg)	15550				
	Mast (L × W × H)	1850×1850×2500mm				
Working temperature (°C)	-20°~+60°					
Max. wind-level (Grade)	6					

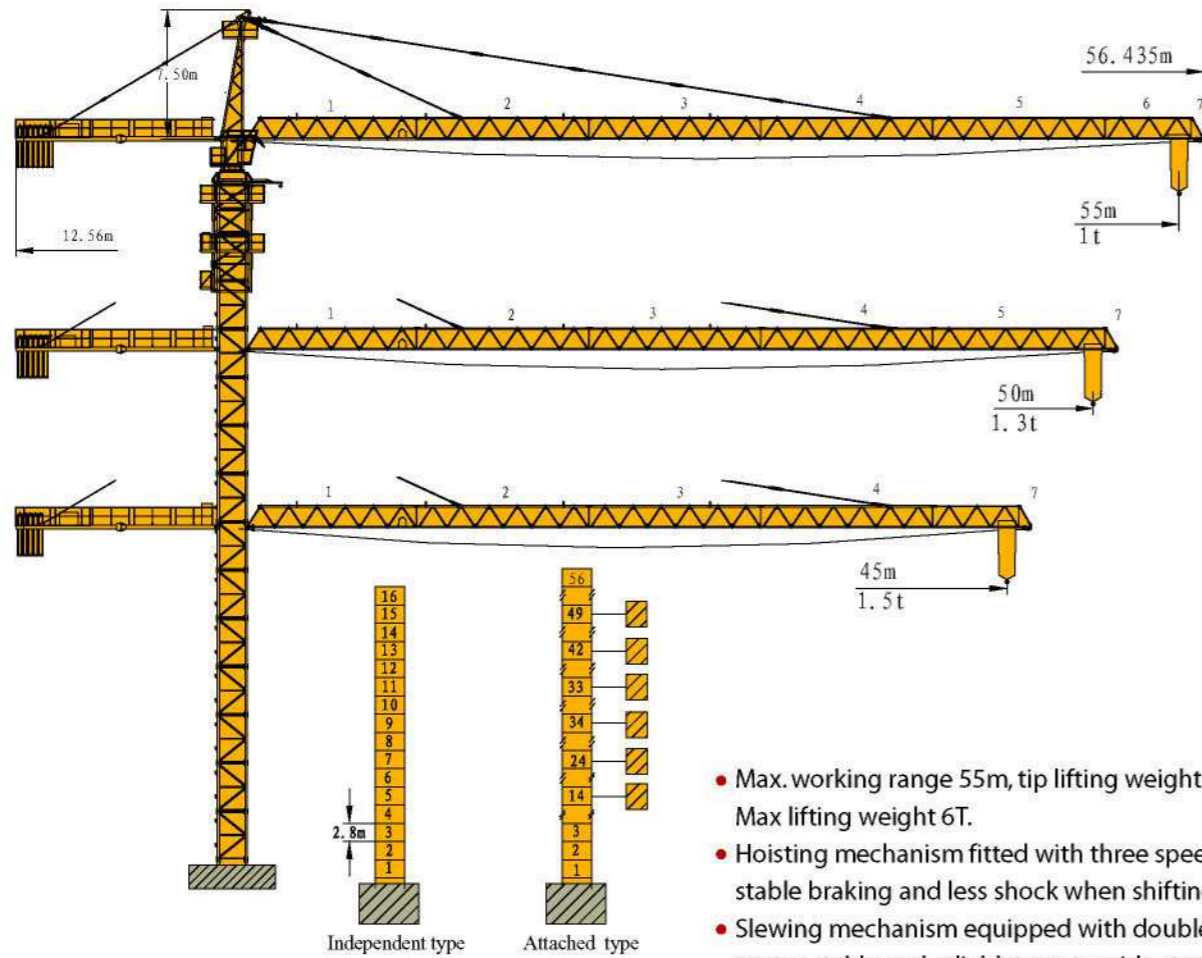
Safety Monitor & Management System

Our tower crane is equipped with Safety Monitor & Management System. It can do:

- Keep records of 1600 working recycles
- Auto-reject misoperation and keep the record
- LCD display working condition for avoiding misoperation
- CAN based communication
- Non-contact measurement, easily fixed
- Overload protection



TC5510



- Max. working range 55m, tip lifting weight 1T and Max lifting weight 6T.
- Hoisting mechanism fitted with three speed motor, stable braking and less shock when shifting.
- Slewing mechanism equipped with double-speed motor, stable and reliable, can provide stepless speed regulation.
- Trolley mechanism can provide two operation speeds.

LIFTING CAPACITY

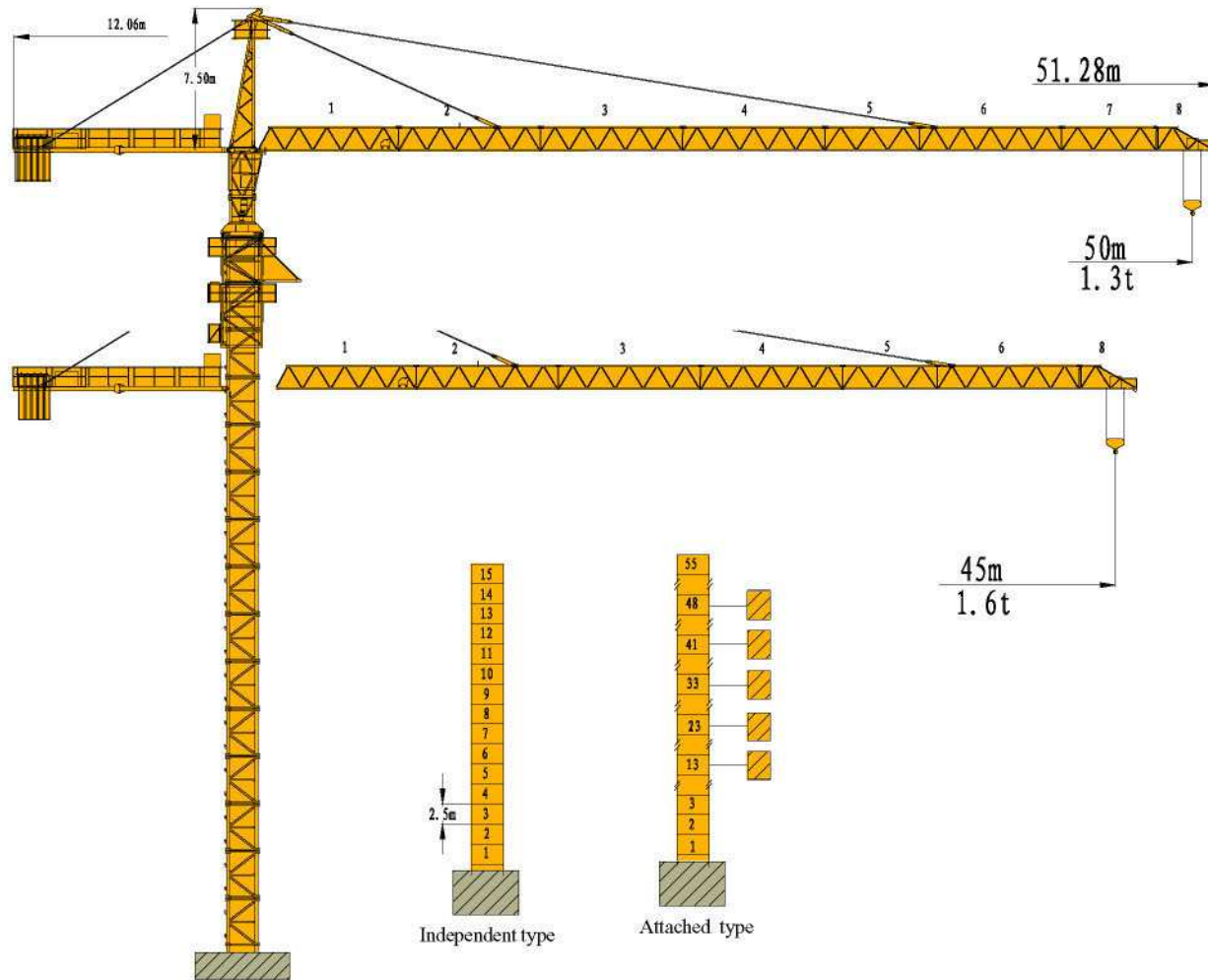
Jib Length 55m										
Radius (m)	2~12.32	20	25	30	35	40	45	50	55	
2 Falls (kg)	3000	3000	2678	2159	1792	1518	1306	1138	1000	
4 Falls (kg)	6000	3466	2678	2159	1792	1518	1306	1138	1000	
Jib Length 50m										
Radius (m)	2~13.58	20	25	30	35	40	45	50		
2 Falls (kg)	3000	3000	3000	2432	2025	1722	1487	1300		
4 Falls (kg)	6000	3880	3007	2432	2025	1722	1487	1300		
Jib Length 45m										
Radius (m)	2~13.58	20	25	30	35	40	45			
2 Falls (kg)	3000	3000	3000	2452	2042	1736	1500			
4 Falls (kg)	6000	3911	3031	2452	2042	1736	1500			

TC5510 SPECIFICATION

Item	Parameter			
	2 Falls	4 Falls		
Max Lifting Moment (T.M)	63			
Working range (M)	2~55			
Jib length can be adjusted (M)	45;50;55			
Lifting weight at tip (T)	1			
Max. Lifting weight (T)	6			
Rated capacity (T)	R=2~13.58	3	6	
	R=13.58~55	3~1	6~1	
Lifting Height(M)	Independent	40		
	Attachment	140	70	
Mechanism	Hoisting	Speed (m/min)	7/32.2/63.5	3.5/16.1/32
		Motor	YZTD225M ₃ -4/8/32	5.4/24/24Kw
	Trolleying	Speed (m/min)	20/40.5	
		Motor	YDEJ132S-4/8	2.2/3.3Kw
	Slewing	Speed (r-p-m)	0.31/0.62	
		Motor	YD132S-8/4	2.2/3.3Kw
Climbing (m/min)	0.5			
Counter weight (kg)	13500			
Mast (L × W × H)	1650×1650×2500mm			
Working temperature (°C)	-20°~+60°			
Max. wind-level (Grade)	6			



TC5013



LIFTING CAPACITY

Jib Length 50m								
Radius (m)	2~13.58	20	25	30	35	40	45	50
2 Falls (kg)	3000	3000	3000	2432	2025	1722	1487	1300
4 Falls (kg)	6000	3880	3007	2432	2025	1722	1487	1300
Jib Length 45m								
Radius (m)	2~14.36	20	25	30	35	40	45	
2 Falls (kg)	3000	3000	3000	2603	2171	1849	1600	
4 Falls (kg)	6000	4140	3213	2603	2171	1849	1600	

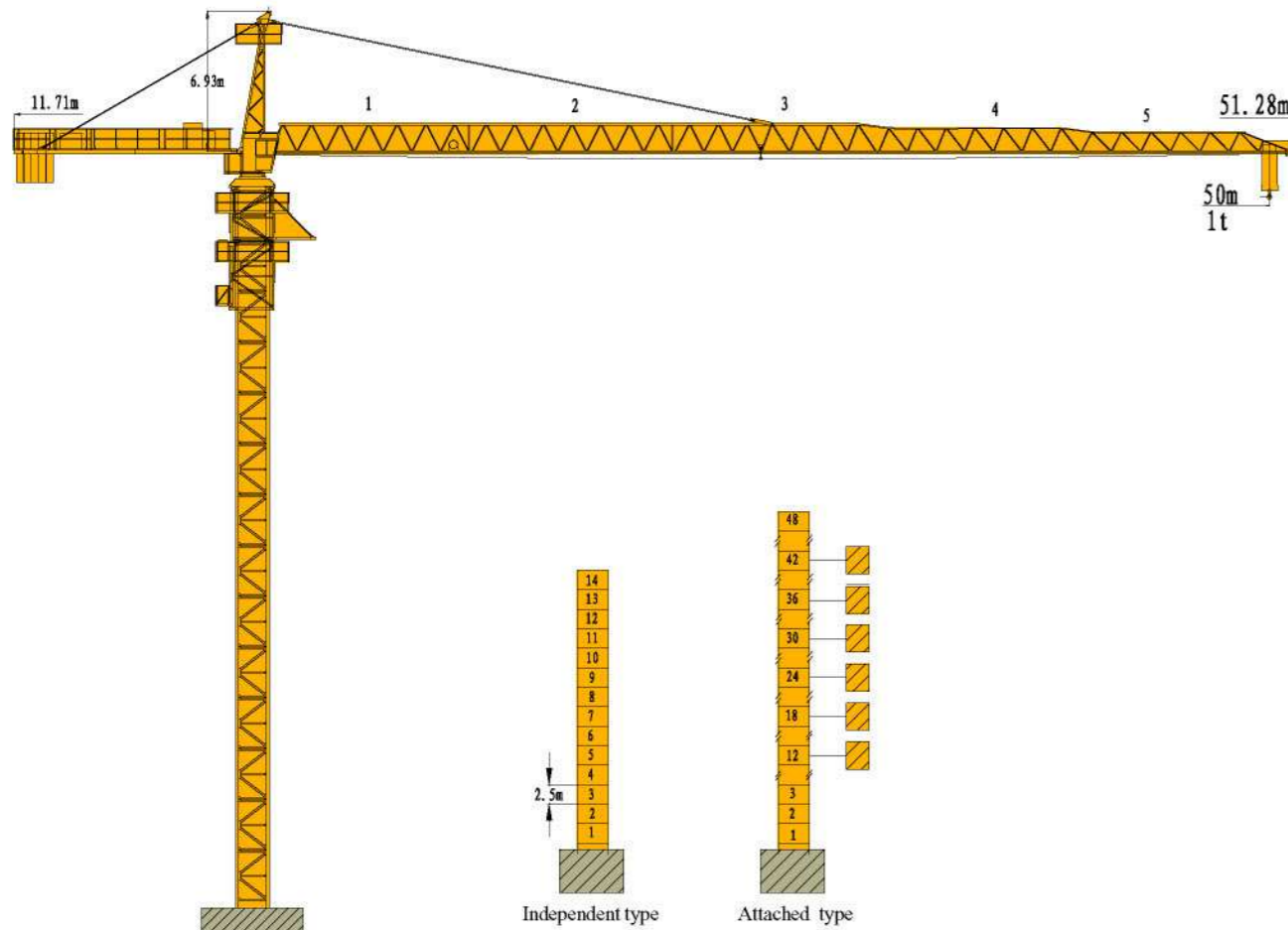
- Max. working range 50m, tip lifting weight 1.3T and Max lifting weight 6T.
- Hoisting mechanism fitted with three speed motor, stable braking and less shock when shifting.
- Slewing mechanism equipped with double-speed motor, stable and reliable, can provide stepless speed regulation.
- Trolley mechanism can provide two operation speeds.

TC5013 SPECIFICATION

Item	Parameter			
	2 Falls	4 Falls		
Max Lifting Moment (T.M)	63			
Working range (M)	2~50			
Jib length can be adjusted (M)	45;50			
Lifting weight at tip (T)	1.3			
Max. Lifting weight (T)	6			
Rated capacity (T)	R=2~13.58	3	6	
	R=13.58~50	3~1.3	6~1.3	
Lifting Height(M)	Independent	40		
	Attachment	140	70	
Mechanism	Hoisting	Speed (m/min)	7/32.2/63.5	3.5/16.1/32
		Motor	YZTD225M ₃ -4/8/32	5.4/24/24Kw
	Trolleying	Speed (m/min)	20/40.5	
		Motor	YDEJ132S-4/8	2.2/3.3Kw
	Slewing	Speed (r-p-m)	0.31/0.62	
		Motor	YD132S-8/4	2.2/3.3Kw
Climbing (m/min)	0.5			
Counter weight (kg)	12000			
Mast (L × W × H)	1650×1650×2500mm			
Working temperature (°C)	-20°~+60°			
Max. wind-level (Grade)	6			



TC5010



LIFTING CAPACITY

Radius (m)	2~15.6	20	25	30	35	40	45	50
2 Falls (kg)	2000	2000	2000	1888	1569	1331	1147	1000
4 Falls (kg)	4000	3023	2339	1888	1569	1331	1147	1000

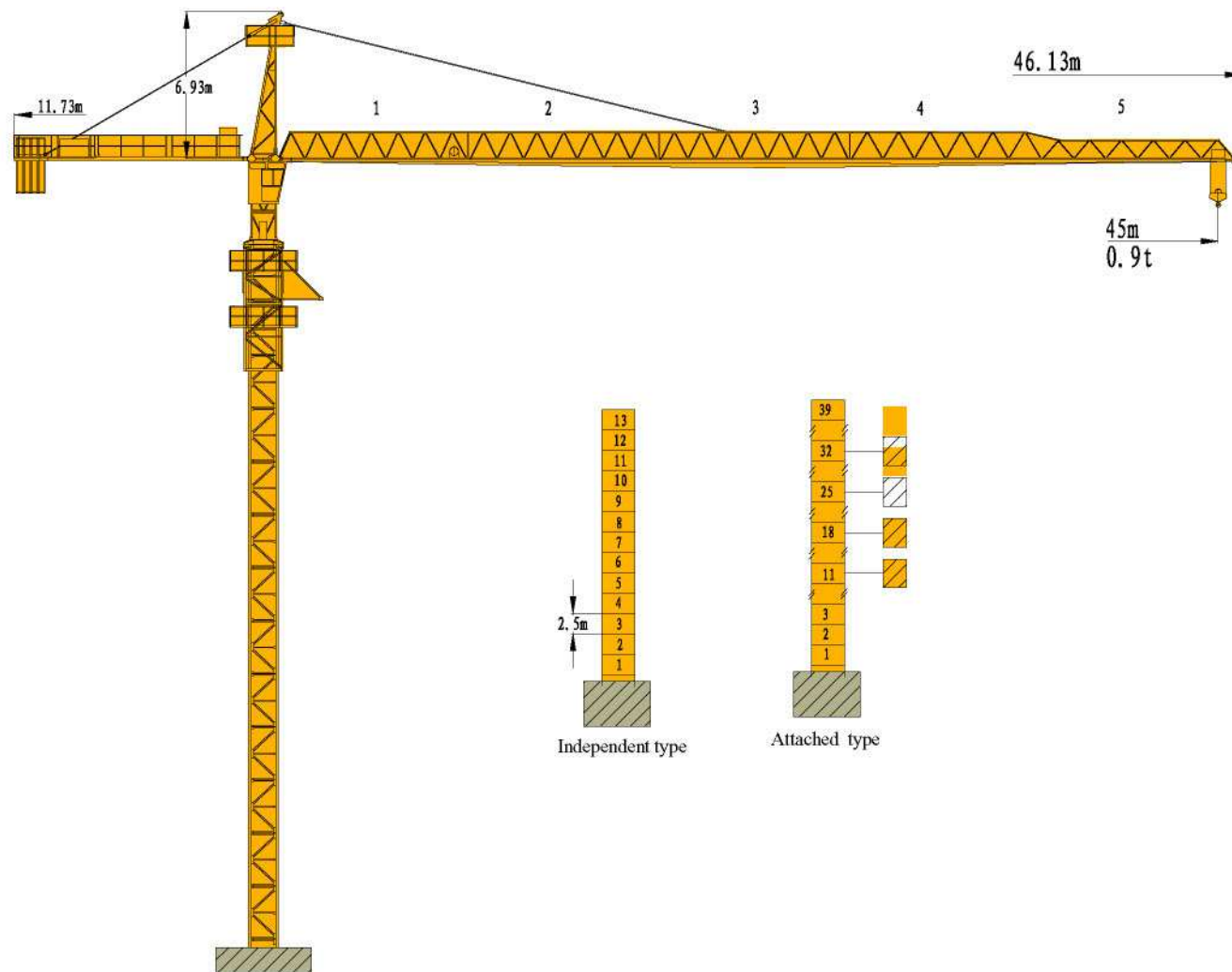
- Max. working range 50m, tip lifting weight 1T and Max lifting weight 4T.
- Hoisting mechanism fitted with three speed motor, stable braking and less shock when shifting.
- Slewing mechanism equipped with double-speed motor, stable and reliable, can provide stepless speed regulation.
- Trolley mechanism can provide two operation speeds.

TC5010 SPECIFICATION

Item	Parameter			
	2 Falls	4 Falls		
Max Lifting Moment (T.M)	50			
Max. working range (M)	50			
Lifting weight at tip (T)	1			
Max. Lifting weight (T)	4			
Rated capacity (T)	R=2~15.6 (m)	2	4	
	R=15.6~50 (m)	2~1	4~1	
Lifting Height(M)	Independent	35		
	Attachment	120	60	
Mechanism	Hoisting	Speed (m/min)	7/32.5/63.9	3.5/15.2/32
		Motor	YZTD225M ₂ -4/8/32	3.5/15/15KW
	Trolleying	Speed (m/min)	21.5/43	
		Motor	YDEJ112M-4/8	1.5/2.4Kw
	Slewing	Speed (r-p-m)	0.38/0.77	
		Motor	YD112M-8/4	1.5/2.4KW
Climbing (m/min)	0.5			
Counter weight (kg)	11985			
Mast (L × W × H)	1650×1650×2500mm			
Working temperature (°C)	-20°~+60°			
Max. wind-level (Grade)	6			



TC4509



LIFTING CAPACITY

Radius (m)	2~13.02	15	20	25	30	35	40	45
2 Falls (kg)	2000	2000	2000	1898	1520	1253	1054	900
4 Falls (kg)	4000	3444	2471	1898	1520	1253	1054	900

- Max. working range 45m, tip lifting weight 0.9T and Max lifting weight 4T.
- Hoisting mechanism fitted with three speed motor, stable braking and less shock when shifting.
- Slewing mechanism equipped with double-speed motor, stable and reliable, can provide stepless speed regulation.
- Trolley mechanism can provide two operation speeds.

TC4509 SPECIFICATION

Item	Parameter		
	2 Falls	4 Falls	
Max Lifting Moment (T.M)	40		
Max. working range (M)	45		
Lifting weight at tip (T)	0.9		
Max. Lifting weight (T)	4		
Rated capacity (T)	R=2~13.02 (m)	2	
	R=13.02~45 (m)	2~0.9	
Lifting Height (M)	Independent	35	
	Attachment	100	
Mechanism	Hoisting	Mechanism	6.73/31.4/62
		Motor	YZTD225M ₂ -4/8/32 3.5/15/15KW
	Trolleying	Speed (m/min)	20/40.5
		Motor	YDEJ112M-4/8 1.5/2.4Kw
	Slewing	Speed (r.p.m)	0.366/0.738
		Motor	YD112M - 8/4 1.5/2.4KW
Climbing (m/min)	0.5		
Counter weight (kg)	7740		
Mast (L × W × H)	1400×1400×2500mm		
Working temperature (°C)	-20°~+60°		
Max. wind-level (Grade)	6		

