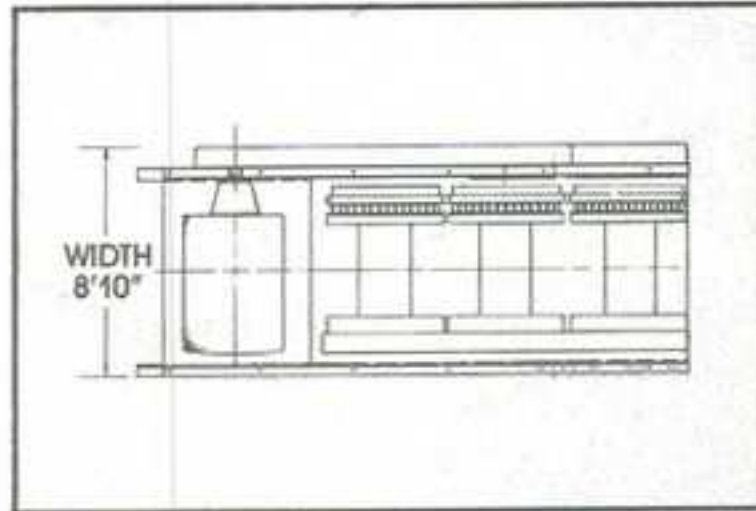
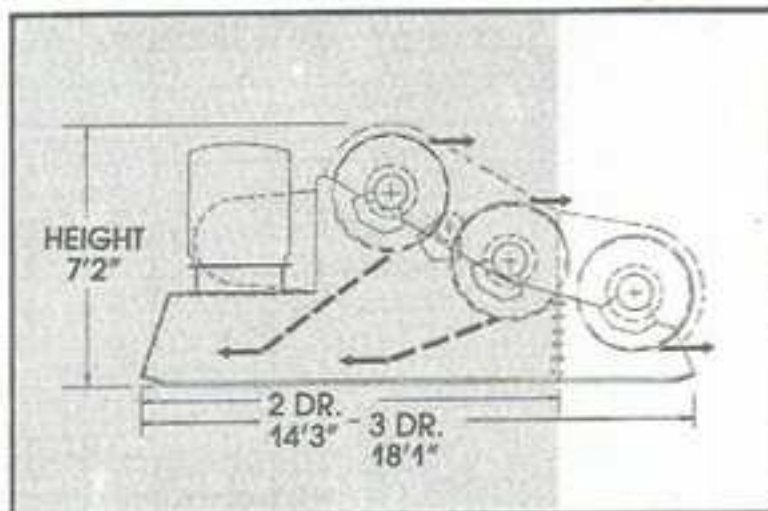


FRAME 8:



DRUM DIMENSIONS:
 Flange Diameter45"
 Drum Diameter20"
 Drum Length32"

SPOOLING CAPACITY:
 3400' of 1" wire rope
 2690' of 1-1/8" wire rope
 2180' of 1-1/4" wire rope

APPROXIMATE WEIGHTS WITH STANDARD POWER:
 Double Drum18,200 lbs.
 Three Drum26,225 lbs.

DRUM BRAKES:
 Diameter45"
 Width10"
 Static Holding Power
 1st Layer88,000 lbs.

DRUM CLUTCH:
 Diameter42"
 Width5"

CONTROL CONSOLE:
 Local stand-up type (air)

PAINT:
 Inorganic zinc with a finish coat of marine machinery epoxy

PERFORMANCE DATA ANCHOR/MOORING SERVICE

Typical single-drum line pull in pounds and line speed in feet per minute with a Detroit Diesel Model 4:71 driving through an Allison single stage torque converter.

	FULL DRUM	AVG. DRUM	1st LAYER
80% Eff	13,365 SLP @ 208 fpm	18,020 SLP @ 148 fpm	27,330 SLP @ 98 fpm
70% Eff	15,884 SLP @ 147 fpm	21,415 SLP @ 110 fpm	32,480 SLP @ 72 fpm
STALL	26,816 lbs.	36,151 lbs.	53,500 lbs.

HOISTING/DERRICK SERVICE

1st Layer 28,500 lbs. SLP through 13,900 lbs. SLP Full Drum

All specifications are subject to change without notice.