

CHAMPION US-80-1RN

General specification

Capacity

Pay load capacities:	maximum 8,000 lbs (3,636 kg)
Maximum car speed:	140 ft/min (42 m/min)
Motor Control:	VFD
Maximum Passengers:	40

Dimensions

Internal width:	6' 0" (1.82 m)
Internal length:	12' 4" (3.76 m)
Internal height:	7' 2" (2.18 m)
Vertical bi-parting door	
Door open height:	6' 8" (2.03m)
Door open width:	6' 0" (1.82m)
Overhead (above top landing):	17' - 11½" min
Hoist-way dimensions:	12' - 11½" W, 13' - 3 ¼" L
Fence:	13'-8 7/8" W, 14'-4½" L
Tie-in intervals (maximum)	
Full Tower:	30' (9.14m)

Car Weight:	6,800 lbs (3,091 kg)
-------------	----------------------

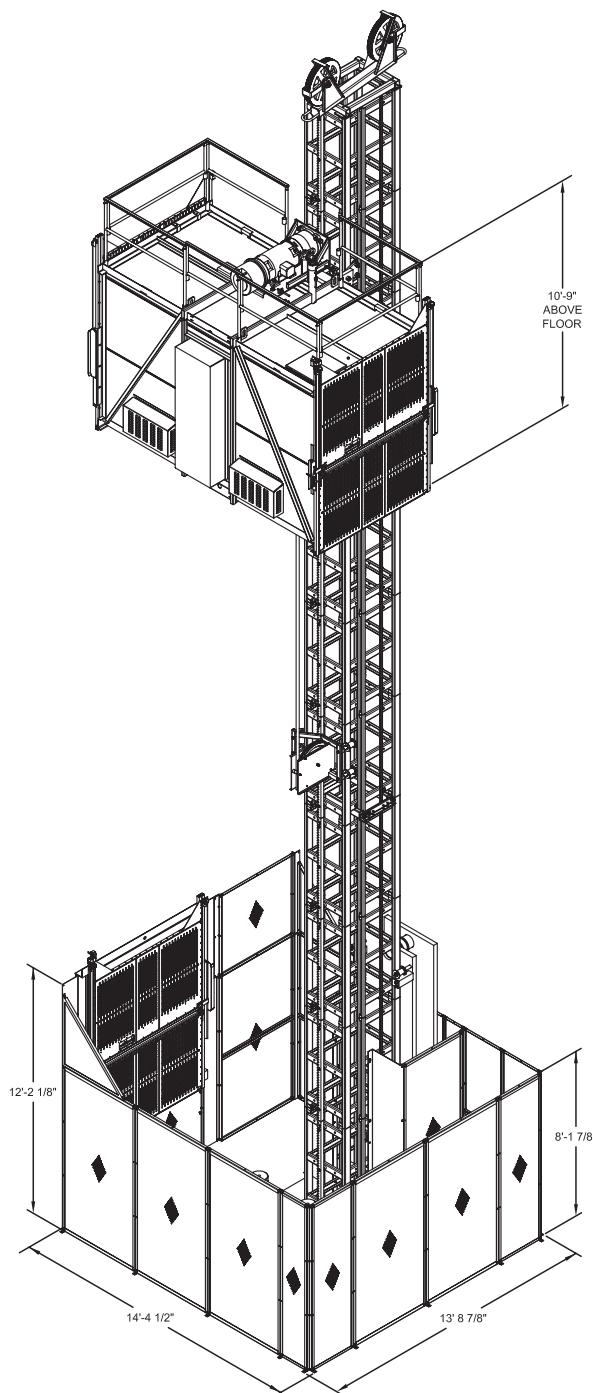
Controls/Electrical

Operation:	single automatic controls (standard) selective collective controls (optional)
Electrical Power:	2 X 35 HP (26 kW)
Power Required:	75 KVA, 480 VAC, 60 Hz , 3 Ø
Starting current A:	330 Amps
Full load current:	90 Amps
Circuit Breakers:	90 Amps
Electrical Enclosures:	NEMA 12 or 4 (4X landing push buttons)

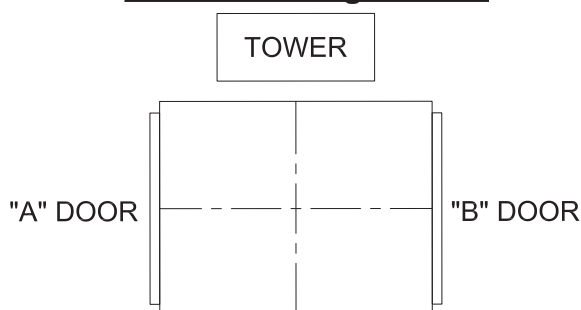
Misc

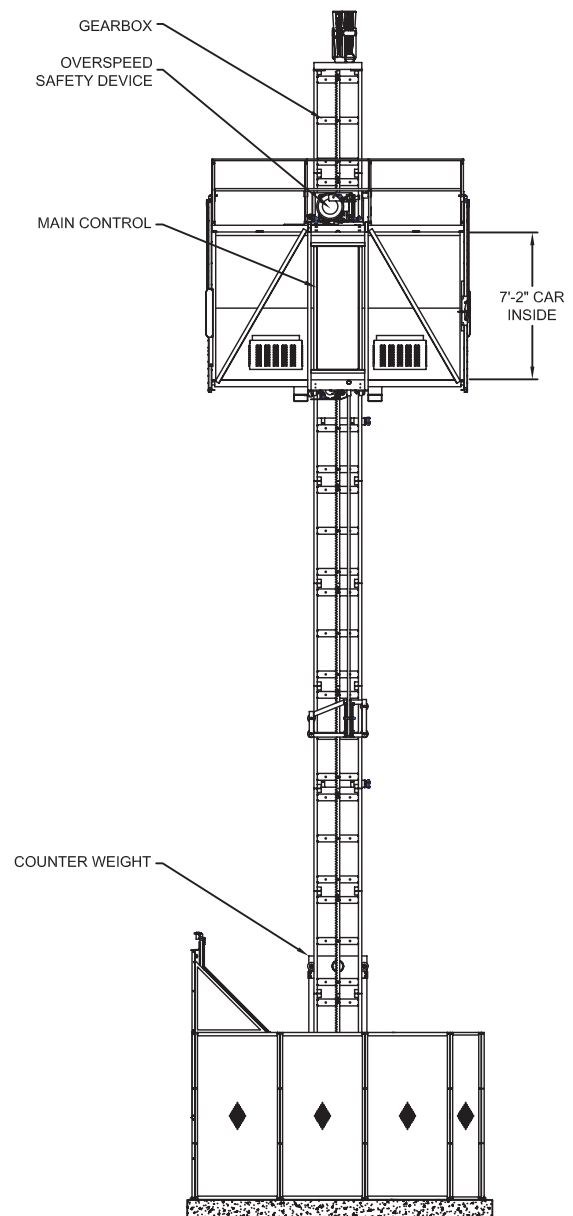
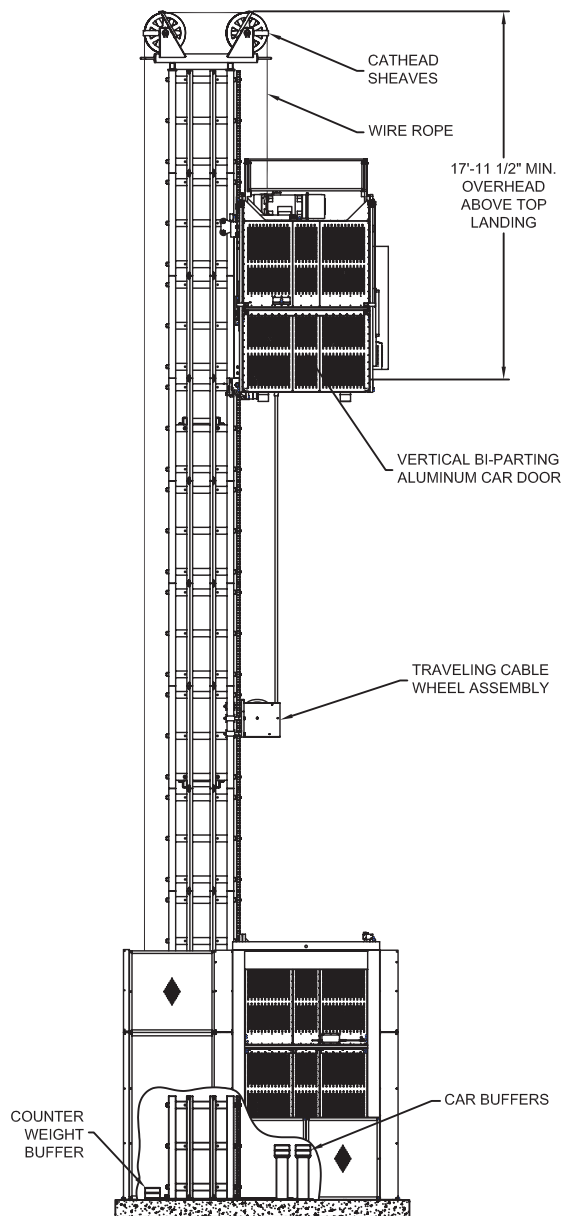
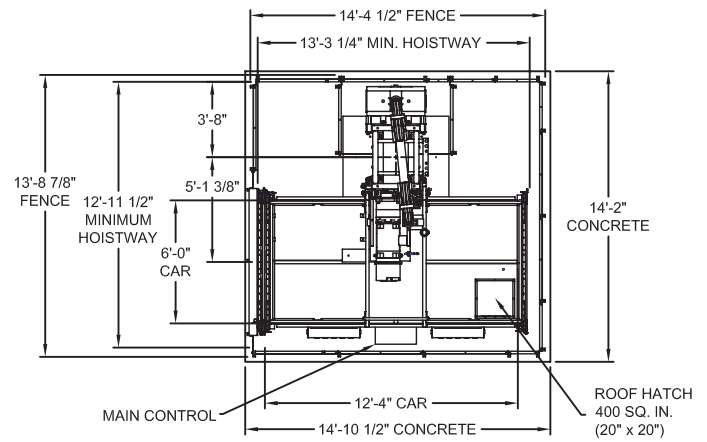
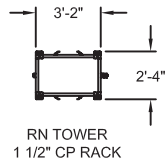
Emergency lowering:	Manual Brake Release
Brake (2):	Spring Set, Electrical Release Multiple Disc Brake
Safety overspeed governor:	Centrifugally Actuated Multiple Friction Disc Brake

*CHAMPION Elevators comply with industry code ANSI A 10.4 nd NEC.



Car door configurations





Dimensions are typical, please consult with engineering for specific configurations. Alimak Hek Champion models are designed to comply with ANSI A 17.1 parts 5.7 or 4.1 as applicable. Use of products must comply to safe practice and applicable statutes, regulations, codes and ordinances. Drawings are illustrative only and do not necessarily depict exact configurations of products offered at a particular time. Alimak Hek Inc has a policy of continuous product research and development, and reserves the right to change design and specifications without notice.