

# Champion

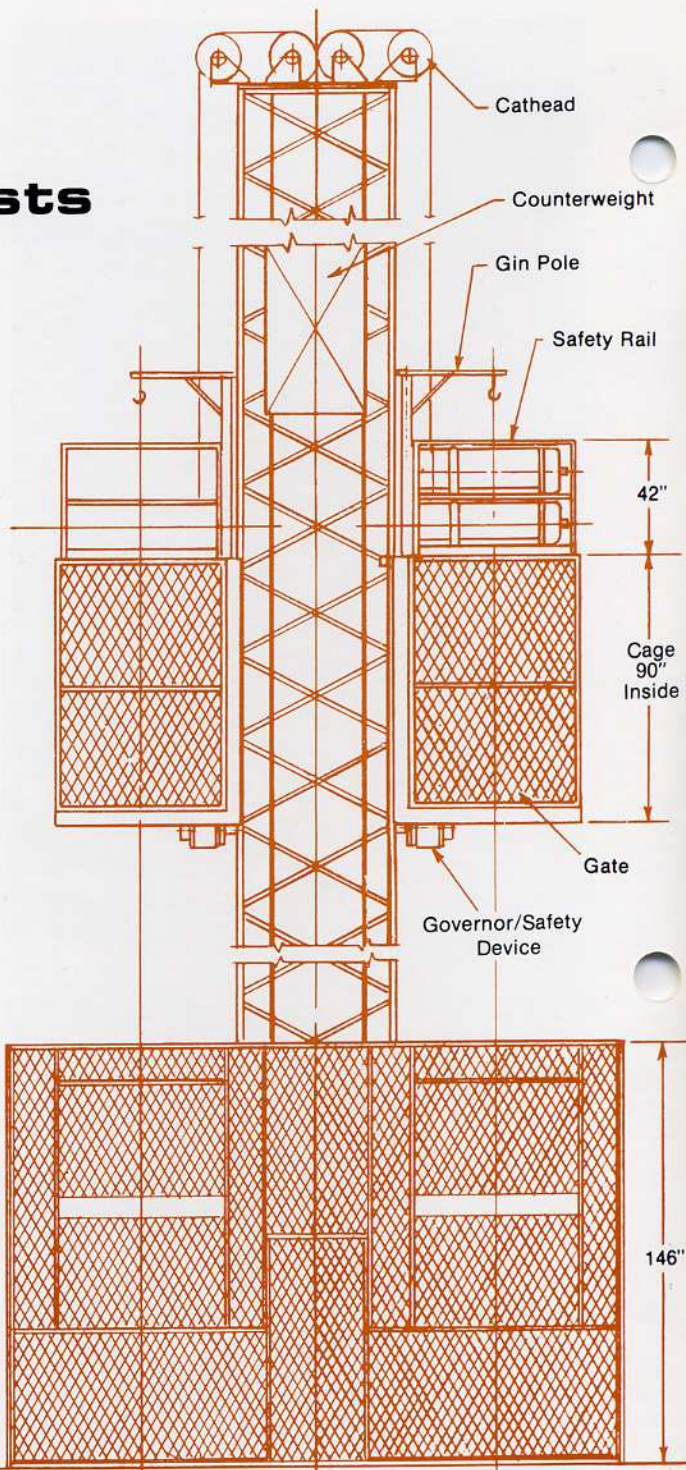
## Rugged, American-Built

## Personnel/Material Hoists

- ### For Construction
- Commerical High Rise
  - Power Generation Plants
  - Refineries and Chemical Plants
  - Shipyards

### SPECIFICATIONS

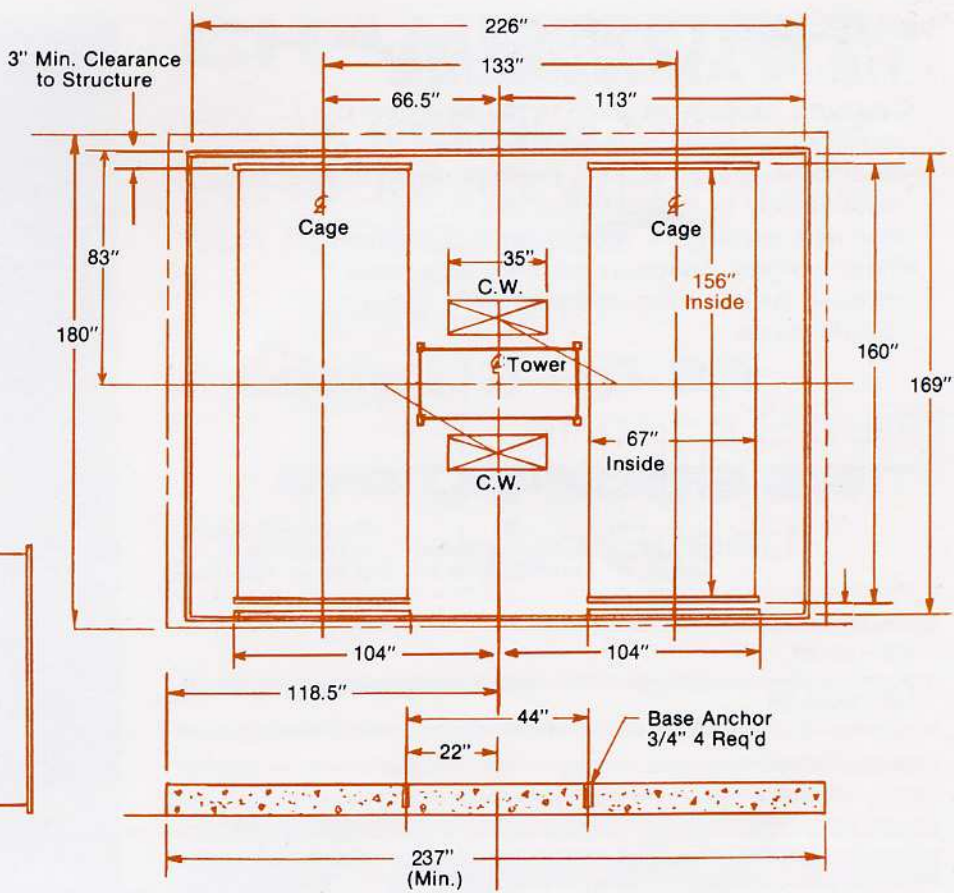
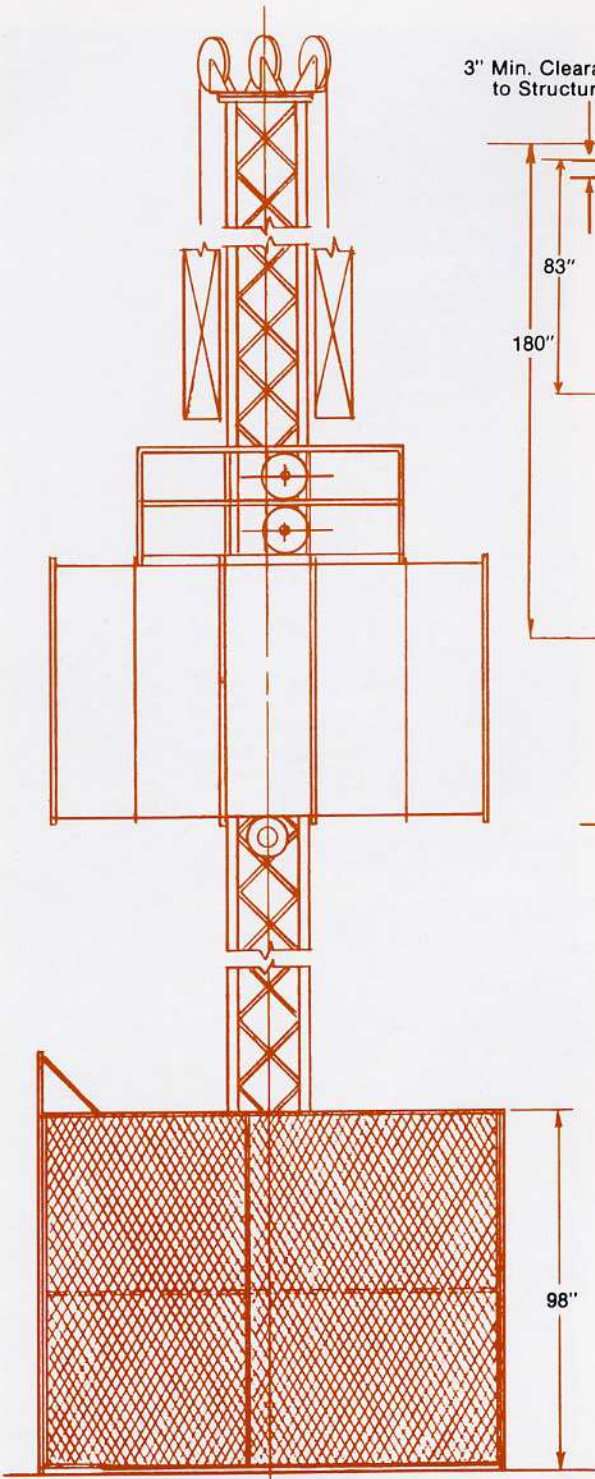
	US-80-2R	US-8002-2R
Cage capacity, lbs.	8000 Per Car	8000 Per Car
Passenger, max.	40 Per Car	40 Per Car
Cage dimensions (inside), ft.-in.		
length	14'-0"	14'-0"
width	5'-7"	5'-7"
height	7'-2"	7'-2"
Cage speed, ft./min.	Min.-141 Max.-148	Low Speed Min. 141-Max. 148 High Speed Min. 282-Max. 297
Electric service	62.5 KVA PER CAR 480 V-60Hz-3 PH	62.5 KVA PER CAR 480 V-60Hz-3 PH
Full load current amps.	65/Car	65/Car
Braking torque, ft./lbs.	2@-175/Car	2@-175/Car
Brakes	Electromechanical multiple disc	Electromechanical multiple disc
Total weight of base unit lbs.	32,100	38,500
Cage weight, lbs.	5,800 Ea.	5,800 Ea.
Weight of counterweight, lbs.	5,800 Ea.	9,000 Ea.
Tower height, max. ft.	900	900
Tower sections, inches	60x28x56	60x28x56
Tower section weights, lbs.	485	485
Tower tie-in intervals, ft.	30	30
Counterweight wire rope 6x25XIP-1WRC	5/8-in.	3/4-in.
Counterweight wire rope length required	4 x tower ht. plus 40 ft.	4 x tower ht. plus 40 ft.
Traveling power cable (6/#6 Type W)	1 x tower ht. plus 30 ft.	1 x tower ht. plus 30 ft.
Stationary power cable (6/#4 Type w)	1 x tower ht. plus 30 ft.	1 x tower ht. plus 30 ft.



### BASE UNIT DESCRIPTION

The following components are included in the base package.

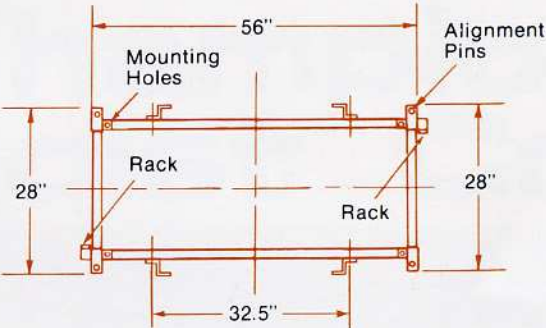
- The following components are included in the base unit package.
- Completely assembled, enclosed cars with over-speed governor and safety brake, motor and all drive components
  - 20 ft of tower for zero lifting height
  - Limit and control switches



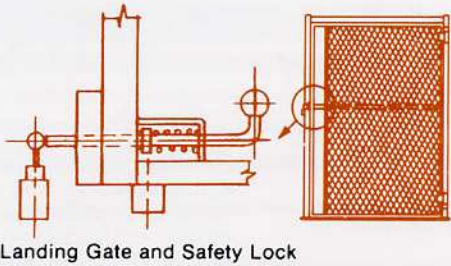
### LOADING FORMULA

**US-80-2R (Twin)**  
 Static Load = 45,400 + 120 (Tower Ht.)  
 Dynamic Load = 39,200 + Static Load

**US-8002-2R (Twin)**  
 Static Load = 52,000 + 121 (Tower Ht.)  
 Dynamic Load = 45,600 + Static Load



Tower sections ends are machined and have dowel alignment pins for fast safe erection and proper alignment.



Champ hoists are designed to comply with U.S. Federal Safety A 10.4. Use of products must conform to safe practice and applicable statutes, regulations, codes and ordinances. Drawings are illustrative only and do not necessarily depict exact configuration of products offered at a particular time. Specifications contained herein are subject to change without notice.