



TH580B

Telehandler



SPECIFICATIONS

Engine

Engine Model	
Standard	Cat® 3054E*
Optional	Cat® C4.4 ACERT**
Gross Power	
Standard	74.5 kW/100 hp
Optional	92 kW/125 hp
Maximum Torque	
Standard	402 Nm
Optional	496 Nm
Bore	105 mm
Stroke	127 mm
Displacement	4.4 liter

* Engine meets EU directive 97/68/EC Stage II emission requirements.

** Engine meets EU directive 97/68/EC Stage IIIA emission requirements.

- All engine horsepower (hp) are metric.
- Gross power to ISO 14396
- Maximum power shown is at 2200 rpm
- Maximum torque shown is at 1400 rpm.

Operating Specifications

Rated Load Capacity	5000 kg
Maximum Lift Height	17 000 mm
Load at Max Height	
Stabilizers Down	2500 kg
Stabilizers Up	2000 kg
Maximum Forward Reach	12 700 mm
Load at Max Reach	
Stabilizers Down	750 kg
Stabilizers Up	500 kg
Top Travel Speed	32 km/h

Tires

Standard	14-24 16 PR
----------	-------------

Brakes

Foot Brake	Servo assisted on front axle
Parking Brake	Dry disc on front axle

Weights

Operating Weight	13 670 kg
------------------	-----------

Hydraulic System

Maximum System Pressure	250 bar
Maximum Pump Flow	113 liter/min
Auxiliary Hydraulic Supply	60 liter/min
Pump Type	Variable Displacement Load Sensing Axial Piston Pump

Service Refill Capacities

	liter
Fuel Tank	100
Hydraulic Tank	87

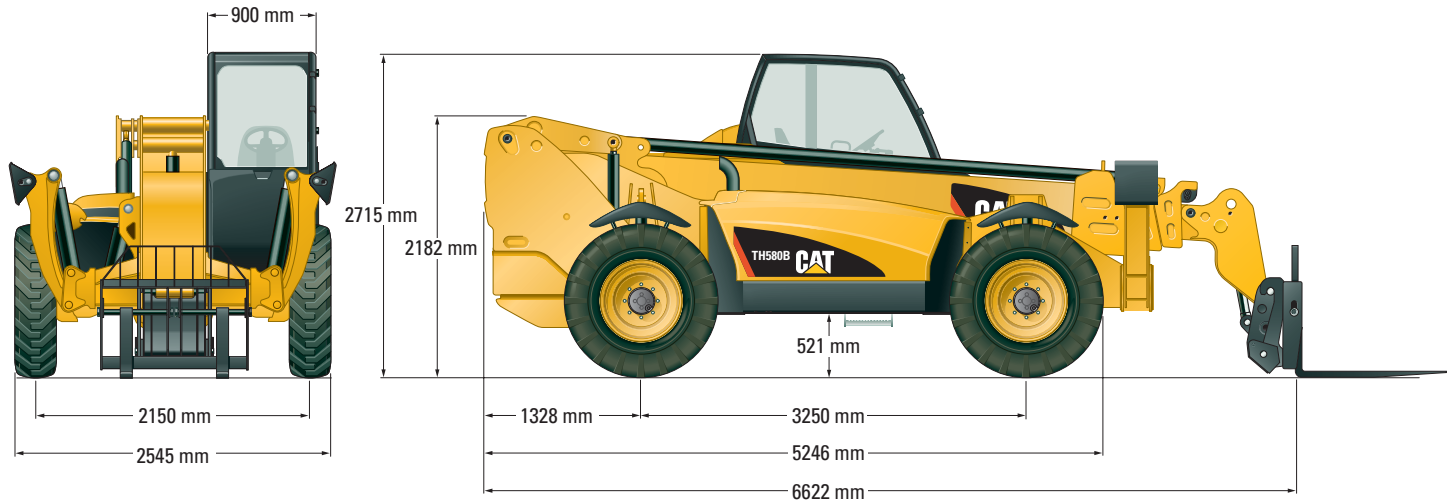
Transmission Speeds

Forward	km/h
1	6
2	12
3	20
4	32
Reverse	
1	6
2	12
3	20

Boom Performance

	seconds
Boom Up	26
Boom Down	16
Tele In	12
Tele Out	15
Crowd Forward (dump)	3
Crowd Backward	3
Combined	
Up and Out	27
Down and In	17

Dimensions



Load Chart

