



# Cat<sup>®</sup> TL943

## TELEHANDLER WITH STABILIZERS

### Specifications

#### Engine

Model*	Cat <sup>®</sup> C3.6L	
Gross Power (Basic) Standard	55 kW	73.7 hp
Gross Power Optional	83 kW	111 hp

\*Meets U.S. EPA Tier 4 Final emission standards.

#### Operating Specifications

Rated Load Capacity	4082 kg	9,000 lb
Maximum Lift Height	13.1 m	43 ft
Maximum Forward Reach	9.4 m	31 ft
Frame Leveling	10°	
Travel Speed (83 kW/111 hp)	29 km/h	18 mph
Capacity at Maximum Height (o/r Down)	3175 kg	7,000 lb
Capacity at Maximum Reach (o/r Down)	1225 kg	2,700 lb
Turning Radius over Tires	3.7 m	12 ft
Drawbar Pull – Loaded (83 kW/111 hp)	114 kN	25,589 lbf
Operating Weight	12 180 kg	26,852 lb

#### Hydraulic System

Variable displacement load sensing axial piston pump		
Auxiliary Hydraulic Pressure	240 bar	3,481 psi
Auxiliary Hydraulic Flow	95 L/min	25 gal/min

#### Service Refill Capacities

Fuel Tank	145 L	38 gal
Diesel Exhaust Fluid (DEF) Tank**	21.5 L	5.7 gal
Hydraulic System	184 L	49 gal

\*\*Only applicable for 83 kW/111 hp engine option.

#### Axles and Brakes

- Trunnion mounted planetary 55-degree steer axles
- High bias limited slip differential on front axle
- Service Brakes: Inboard wet disc brakes on front and rear axles
- Parking Brakes: Wet disc, spring applied hydraulic release on front axle

#### Transmission Speeds

Forward/Reverse	4 Speeds/3 Speeds
-----------------	-------------------

#### Tires

Standard	370/75-28 Duraforce Air
Optional	370/75-28 Duraforce Foam Fill
	315/95-28 Telemaster Solid
	14.00-24 16PR Air
	14.00-24 12PR Foam
	370/75-28 Non-Marking Air
	370/75-28 Non-Marking Foam

#### Boom Performance

Boom Up/Boom Down	9.9 seconds/8.5 seconds
Tele In/Tele Out	14.6 seconds/14.5 seconds

#### Optional Work Tool Attachments

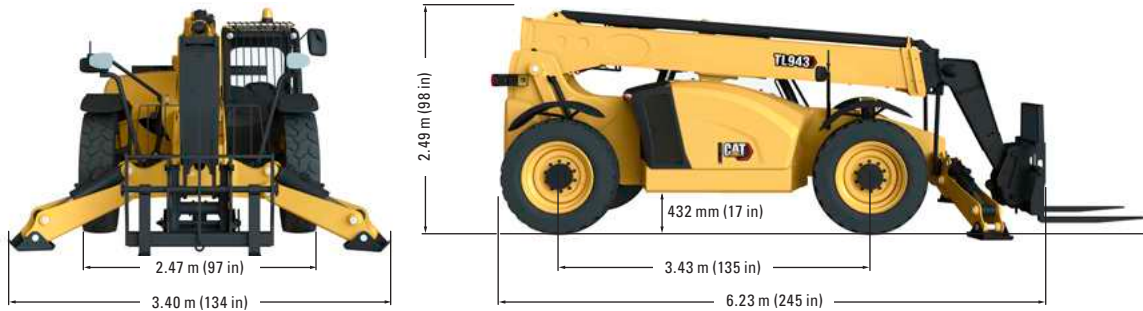
Hydraulic IT Coupler		
Carriages		
Standard Tilt	1270 mm	50 in
	1524 mm	60 in
	1829 mm	72 in
Side Tilt	1270 mm	50 in
	1829 mm	72 in
Side Shift	1270 mm	50 in
Swing, 100°	1829 mm	72 in
Dual Hydraulic Fork Positioner		
	1270 mm	50 in
	1829 mm	72 in
Forks		
Pallet	1220 mm	48 in
	1525 mm	60 in
	1829 mm	72 in
Lumber	1525 mm	60 in
Block/Cubing	1220 mm	48 in
Fork Extensions*	2286 mm	90 in
Buckets		
General Purpose	1.0 m <sup>3</sup>	1.3 yd <sup>3</sup>
	1.5 m <sup>3</sup>	2.0 yd <sup>3</sup>
Multi Purpose	1.0 m <sup>3</sup>	1.3 yd <sup>3</sup>
Grapple	1.3 m <sup>3</sup>	1.7 yd <sup>3</sup>
Material Handling Arm	Adjustable 2-4 m	Adjustable 6.7-13.2 ft
Truss Booms	3.7 m	12 ft
	4.6 m	15 ft
Truss with Winch	0.9 m	3 ft
	3.7 m	12 ft
Fork Mounted		
Work Platform	1220 mm × 2438 mm	4 ft × 8 ft
Truss Boom	Adjustable 2.1-3.6 m	Adjustable 7-12 ft
Lifting Hook		
Trash Hopper		

\*For use with 1525 mm (60 in) forks or larger.

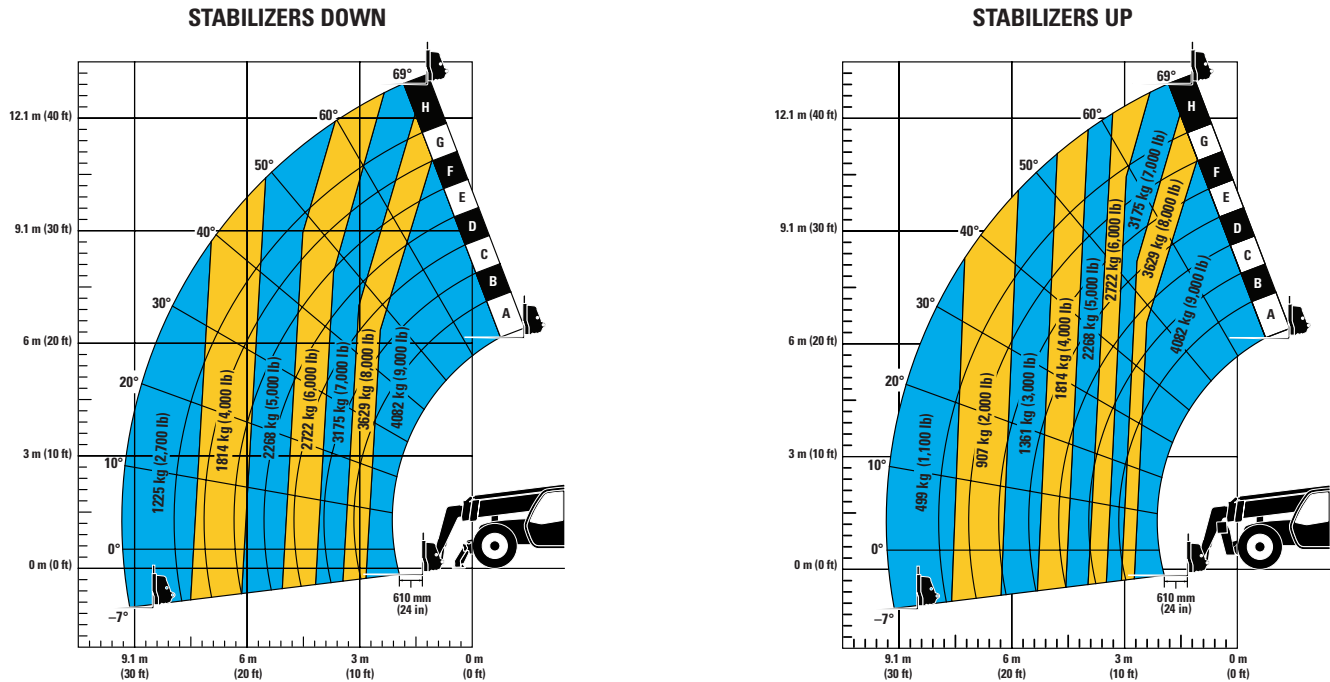


# TL943 Telehandler with Stabilizers

## Dimensions (All dimensions are approximate.)



## Load Chart and Dimensions



### IMPORTANT

Rated lift capacities shown are with machine equipped with carriage and pallet forks. The machine must be level on a firm surface with undamaged, properly inflated tires. Machine specifications and stability are based on rated lift capacities at specific boom angles and boom lengths.

(If specifications are critical, the proposed application should be discussed with your dealer.)

DO NOT exceed rated lift capacity loads, as unstable and dangerous machine conditions will result.

DO NOT tip the machine forward to determine the allowable load.

Use only approved attachments with proper material handler model/attachment load capacity charts displayed in the operator's cab.

*Due to continuous product improvements, machine specifications and/or equipment changes may be made without prior notification. This machine meets or exceeds ANSI/ITSDF B56.6-2016 as originally manufactured for intended applications.*

For more complete information on Cat products, dealer services, and industry solutions, visit us on the web at [www.cat.com](http://www.cat.com)

© 2021 Caterpillar  
All rights reserved

Materials and specifications are subject to change without notice. Featured machines in photos may include additional equipment. See your Cat dealer for available options.

CAT, CATERPILLAR, LET'S DO THE WORK, their respective logos, "Caterpillar Corporate Yellow," the "Power Edge" and Cat "Modern Hex" trade dress as well as corporate and product identity used herein, are trademarks of Caterpillar and may not be used without permission.

AEHQ8381 (08-2021)  
Build Number: 943-05  
(N Am)

