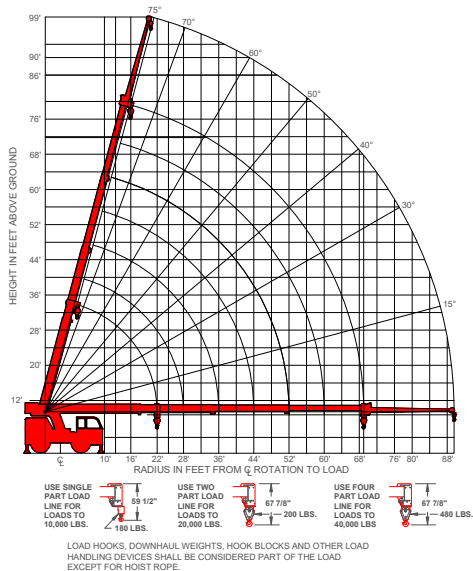
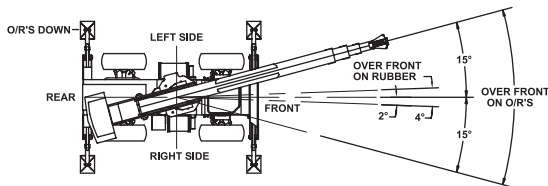


Crane Capacity Chart: US Standard





WORKING RANGE CHART



Load hooks, downhaul weights, hook blocks and other load handling devices except hoist rope shall be considered part of the load.



The load hoist line on this unit must be 5/8" dia. (16 Mm) 425 foot (130m) long compact 35x7 class grade 2160 wire rope (or equivalent) with a minimum breaking strength of 56,400 lbs (251 kn).

Capacities Apply to Operation on Firm Level Surface					
Load Radius (Feet)		Main Boom or Extension Capacities (Pounds)			
		360° Rotation		Over Front	
					
Main Boom	10	18300	40000	26300	40000
	12	13900	34100	22000	34100
	14	10900	29200	18000	29200
	16	8600	25500	14800	25500
	18	7300	23200	12400	22700
	20	6000	22000	10000	22000
	22	5000	19000	8300	20000
	24	4200	17800	7000	18300
	26	3600	16100	6100	16900
	28	3000	13300	5200	15700
	30	2500	12000	4600	14600
	32	2200	10700	4000	13700
	34	1800	9700	3500	12900
	36	1500	8900	3100	11900
	38	1300	8000	2700	10900
	40	1000	7300	2400	9900
	42	800	6700	2000	9200
	46	-	5600	1600	8100
	50	-	4700	1200	7000
	54	-	4000	800	6100
	58	-	3400	500	5300
Boom Extension	62	-	2900	-	4600
	66	-	2400	-	4000
	68	-	2300	-	3600
	72	-	2500	-	2800
	76	-	2000	-	2800
	80	-	1600	-	2800
	84	-	1300	-	2800
	88	-	1100	-	2000

DO NOT POSITION BOOM AT LOAD RADII WHERE NO LOAD CAPACITIES ARE SHOWN. EXCEEDING CAPACITY RATINGS OR APPLYING SIDE LOADS TO THE BOOM OR BOOM EXTENSION IS MISUSE, IS HAZARDOUS, AND VOIDS WARRANTY.

CAUTION: BOOM EXTENSION LOADS MUST NOT EXCEED MAIN BOOM CAPACITY.

RT-400-B Rough Terrain Crane

LOAD RADIUS IS THE HORIZONTAL DISTANCE FROM THE CENTER OF ROTATION OF THE UNLOADED CRANE TO THE VERTICAL LOAD LINE WITH THE LOAD APPLIED.

CAPACITIES ON OUTRIGGERS ARE 85% OF TIPPING LOADS. CAPACITIES ON RUBBER ARE 75% OF TIPPING LOADS. CAPACITIES BELOW BOLD LINES ARE LIMITED BY TIPPING. OTHER CAPACITIES ARE LIMITED BY STRUCTURAL OR HYDRAULIC CAPACITY.

PICK AND CARRY WITH THE SHORTEST PRACTICAL BOOM, CENTERED OVER THE FRONT. OPERATE WITH BOOM AS LOW AS POSSIBLE, WITH THE LOAD CLOSE TO THE GROUND.

PICK AND CARRY CAPACITIES ARE FOR SMOOTH, LEVEL PAVED SURFACE. SPEED MUST BE LESS THAN 2 MPH (3.2 kph).

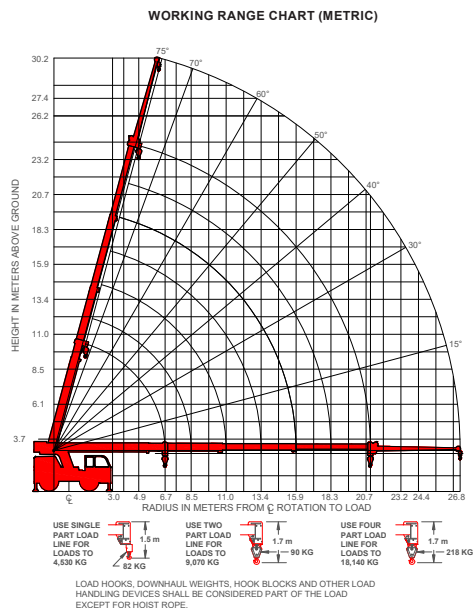
THE BOOMS ON THIS UNIT ARE ALL STEEL AND HAVE NO LINE VOLTAGE RATING - NO ELECTRICAL INSULATION VALUE.

MAXIMUM HYDRAULIC PRESSURE: 4000 PSI (280 bar)

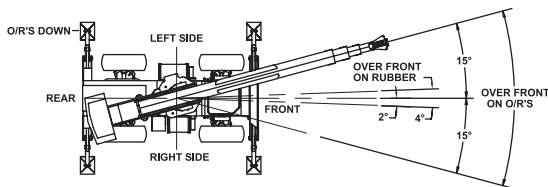
BOOM EXTENSION DEDUCT: 500 LBS (220 kg) WHEN STOWED ON BASE BOOM.

ENSURE ANTI-TWO-BLOCK SWITCH IS FUNCTIONAL AFTER DEPLOYING OR STOWING.





Crane Capacity Chart: Metric



Load hooks, downhaul weights, hook blocks and other load handling devices except hoist rope shall be considered part of the load.



The load hoist line on this unit must be 16 mm (5/8") dia. 130m (425 foot) long compact 35x7 class grade 2160 wire rope (or equivalent) with a minimum breaking strength of 251 kn (56,400 lbs).

Capacities Apply to Operation on Firm Level Surface					
Load Radius (Meter)		Main Boom or Extension Capacities (Kilograms)			
		360° Rotation		Over Front	
					
Main Boom	3.0	8300	18140	11920	18140
	3.7	6300	15460	9970	15460
	4.3	4940	13240	8160	13240
	4.9	3900	11560	6710	11560
	5.5	3310	10520	5620	10290
	6.1	2720	9970	4530	9970
	6.7	2260	8610	3760	9070
	7.3	1900	8070	3170	8300
	7.9	1630	7300	2760	7660
	8.5	1360	6030	2350	7120
	9.1	1130	5440	2080	6620
	9.8	990	4850	1810	6210
	10.4	810	4390	1580	5850
	11.0	680	4030	1400	5390
	11.6	580	3620	1330	4940
	12.2	450	3310	1080	4490
	12.8	360	3030	900	4170
	14.0	-	2540	720	3670
Boom Extension	15.2	-	2130	540	3170
	16.5	-	1810	360	2760
	17.7	-	1540	220	2400
	18.9	-	1310	-	2080
	20.1	-	1080	-	1810
	20.7	-	1040	-	1630
	22.0	-	1130	-	1270
	23.2	-	900	-	1270
	24.4	-	720	-	1270
	25.6	-	580	-	1270
	26.8	-	490	-	900

DO NOT POSITION BOOM AT LOAD RADII WHERE NO LOAD CAPACITIES ARE SHOWN. EXCEEDING CAPACITY RATINGS OR APPLYING SIDE LOADS TO THE BOOM OR BOOM EXTENSION IS MISUSE, IS HAZARDOUS, AND VOIDS WARRANTY.

CAUTION: BOOM EXTENSION LOADS MUST NOT EXCEED MAIN BOOM CAPACITY.

RT-400-B Rough Terrain Crane

LOAD RADIUS IS THE HORIZONTAL DISTANCE FROM THE CENTER OF ROTATION OF THE UNLOADED CRANE TO THE VERTICAL LOAD LINE WITH THE LOAD APPLIED.

CAPACITIES ON OUTRIGGERS ARE 85% OF TIPPING LOADS. CAPACITIES ON RUBBER ARE 75% OF TIPPING LOADS. CAPACITIES BELOW BOLD LINES ARE LIMITED BY TIPPING. OTHER CAPACITIES ARE LIMITED BY STRUCTURAL OR HYDRAULIC CAPACITY.

PICK AND CARRY WITH THE SHORTEST PRACTICAL BOOM, CENTERED OVER THE FRONT. OPERATE WITH BOOM AS LOW AS POSSIBLE, WITH THE LOAD CLOSE TO THE GROUND.

PICK AND CARRY CAPACITIES ARE FOR SMOOTH, LEVEL PAVED SURFACE. SPEED MUST BE LESS THAN 3.2 kph (2 MPH).

THE BOOMS ON THIS UNIT ARE ALL STEEL AND HAVE NO LINE VOLTAGE RATING - NO ELECTRICAL INSULATION VALUE.

MAXIMUM HYDRAULIC PRESSURE: 280 bar (4000 PSI)

BOOM EXTENSION DEDUCT: 220 kg (500 LBS) WHEN STOWED ON BASE BOOM.

ENSURE ANTI-TWO-BLOCK SWITCH IS FUNCTIONAL AFTER DEPLOYING OR STOWING.