



## AT A GLANCE:

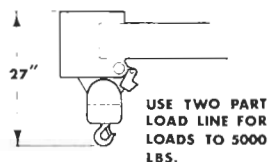
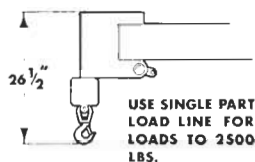
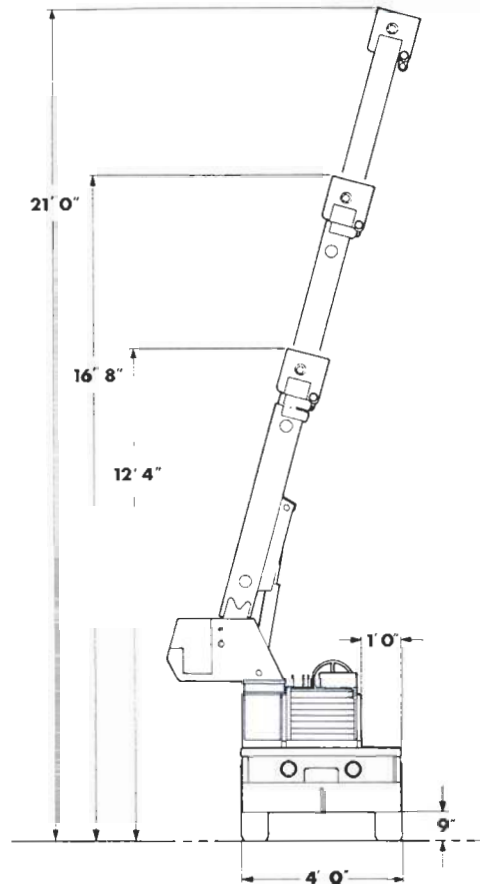
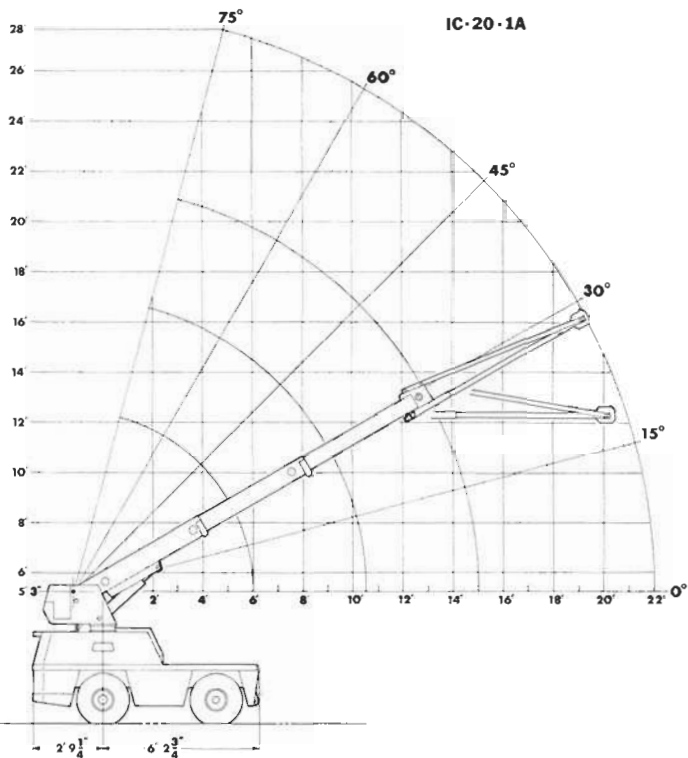
- Built tough to work tough in industrial applications where an operator wants pin point control and placement of loads to 2½ tons.

**bmc BRODERSON**  
Manufacturing Corp.

P.O. Box 14770, Lenexa, Kansas 66215 • (913) 888-0606

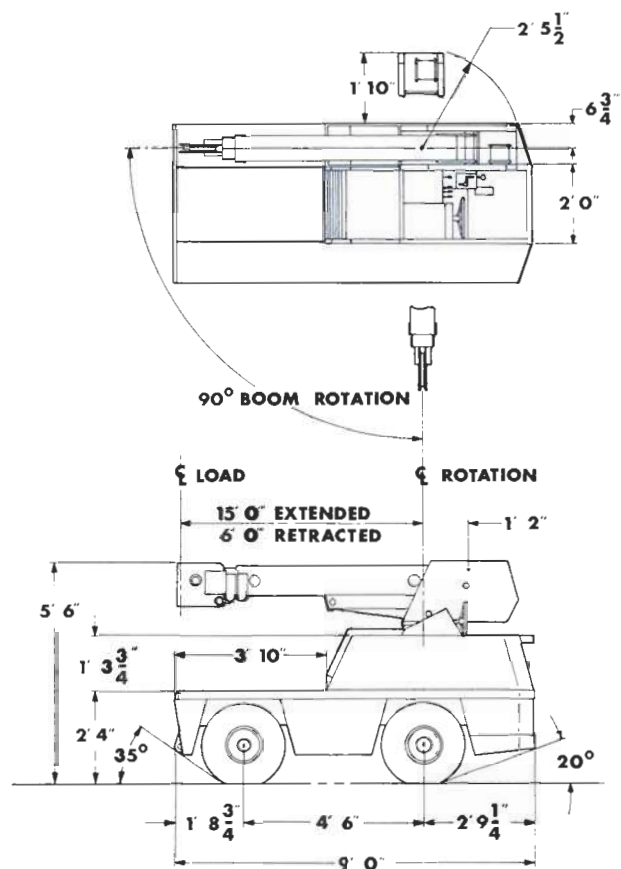
Courtesy of CraneMarket

# IC-20

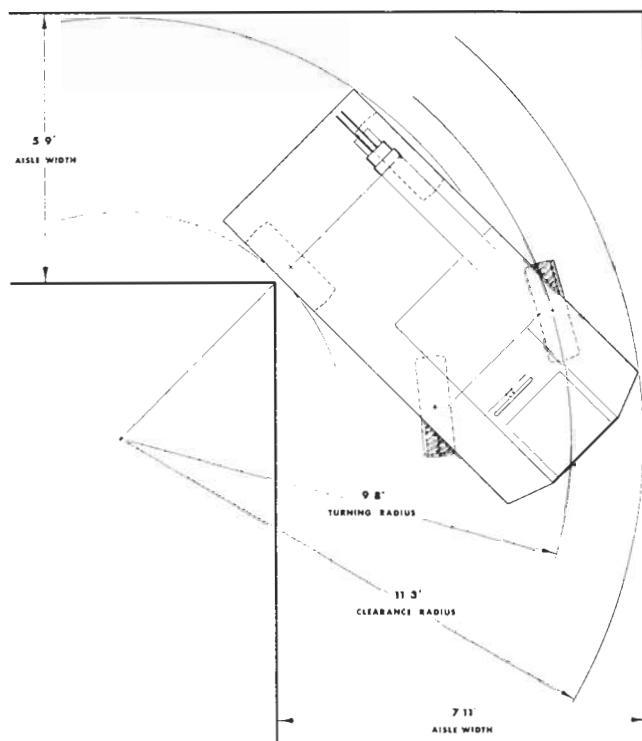


ALL CAPACITIES FOR 90° SWING

LOAD RADIUS FEET	3-SECTION BOOM	7 FT. JIB INSTALLED	
		IN-LINE	30° OFFSET
4	5000	1300	
5	4000	1100	
6	3000	900	750
8	2250	750	650
10	1400	550	550
12	1025	500	500
15	725	500	500
17		500	500
19		500	500
22		390	







### General:

Weight - 5,800 lbs.  
 Travel Speed - 0 to 6 MPH  
 Drawbar pull - 2,800 lbs.  
 Turning Radius (C/L of outside steering wheel) 9'8" Aisle width for 90° turn 7'11"

### Engine:

	Std.	Opt.
Make	Continental	Kubota
Model	Y112	V-1902-B
Type	Gas	Diesel
No. Cyl.	4	4
Displacement	112	113.6
HP @ Governed speed	36 HP	40 HP

### Electrical:

12 volt system  
 Lighting group - 1 pair headlights  
 Instrument group - Fuel, ammeter, oil pressure, water temperature, oil filter pressure, gauges and hourmeter

### Fuel Tank:

13.5 gal. capacity

### Hydrostatic pump:

Cessna piston type 2.48 CID/Rev direct driven from engine crankshaft.

### Axles:

**Drive axle** — Location-Front  
 Contains Fairfield torque hubs and Ross Hydraulic drive motors  
**Steering axle** — Location-Rear

### Steering:

Full hydraulic orbitrol unit with one double acting, 2 1/2" cylinder attached to rear axle.

### Tires:

**Standard** - 7.50X10 Pneumatic  
**Optional** - Solid rubber "Grizzley Supersoft" SG 36

### Brakes:

Hand/Foot actuated parking brake build into each torque hub to hold crane when not being driven

### Cargo Deck:

20 sq. ft. deck area, 5,000 pounds capacity

### Hydraulic System:

Tandem pump mounted to rear of hydrostatic piston pump. Delivers 5 and 15 GPM at rated R.P.M.  
 Hydraulic oil tank capacity - 9.5 gal. capacity.

### Crane:

#### Boom Movement

Rotation 90°  
 Elevation 0° to 75°  
 Extension 6' to 15' (9 ft.)

#### Boom Speeds

Rotation 90° in 10 sec.  
 Elevation 11 seconds  
 Extension 28 seconds

#### Boom Assembly

Three section boom assembly equipped with bearing pads, double-acting hydraulic cylinders equipped with direct connected holding valves and boom angle indicator on left side of boom

#### Boom Swing

Two double acting hydraulic cylinders connected to turntable torque tube provides 90° rotation. Heavy-duty ball bearing rotation bearing.

#### Boom Winch

Turret-mounted  
 Hydraulic powered  
 Bare drum line pull of 3,100 lbs.  
 Winch line speed 46 ft. per minute  
 80 ft. of 5/16 wire rope, downhaul weight and swivel hook, standard

# IC-20

## Options:

### Anti Two Block Device

Prevents damage to hoist rope and/or crane components from pulling load hook against boom tip.

### Auxiliary Winch

Mounted behind front bumper, hydraulically driven with control in operators console.

### Back-Up Alarm

Provides pulsating sound when transmission is in reverse

### Bucket Brake

Friction brake for holding fiberglass bucket in a fixed position.

### Boom Swing Lock

Prevents boom from being swung in normal 90° arc. Includes padlock.

### Fiberglass Bucket

24" X 24" X 42" deep personnel bucket with maximum capacity of 300 pounds.

### Sheave Block

Required for maximum capacity lifts.

### 7 Ft. Pin on Jib

Consists of Jib with pair of tension bars, tip sheave, cable keeper, pins, jib attaching pins. Tension bars provide two positions: in-line and 30° offset.

### LP Gas Fuel System Kit

Contains all necessary components for LPG operation. Dual fuel also available.

### Operators Guard

Tubular steel weldment with heavy expanded steel mesh top section. Overhead height with guard installed 90".

### Pintle Hook

Holland "T-60-A" pintle hook mounted on rear frame. 5 ton capacity.

### Lifting Sling Kit

Three leg hitch, consisting of heavy duty pear link, 3 wire ropes with swaged on clevis ends. Two flush mounted lifting rings on load deck corners and heavy duty lift eye attached to turret.



**bmc BRODERSON**  
Manufacturing Corp.

P.O. Box 14770, Lenexa, Kansas 66215 • (913) 888-0606