



## AT A GLANCE:

- Rated Capacity - 8,000 pounds
- Vertical Reach - 26 feet
- Horizontal Reach - 19 feet
- 360 Degree Rotation
- Carry Deck
- Hydraulic Outriggers

**bmc BRODERSON**  
Manufacturing Corp.

P.O. Box 14770, Lenexa, KS 66285-4770  
(913) 888-0606 • FAX (913) 541-0690

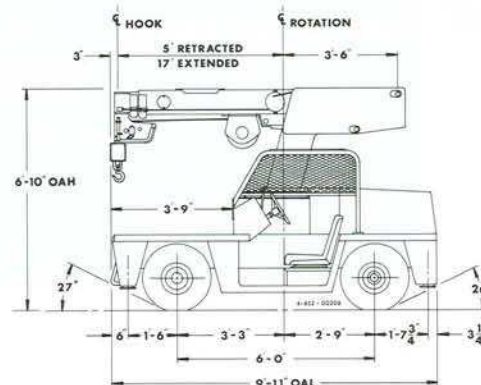
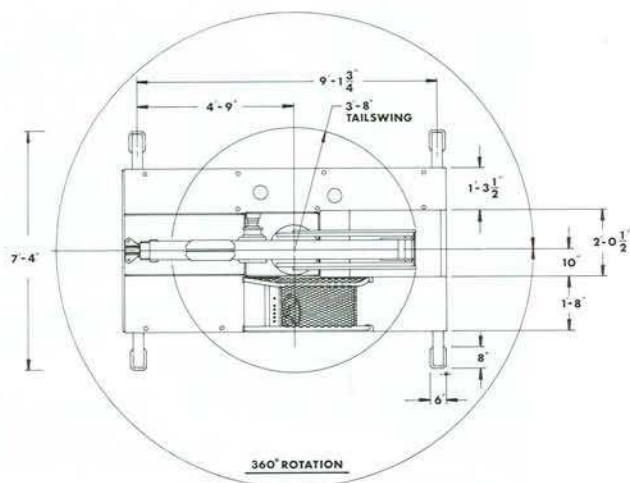
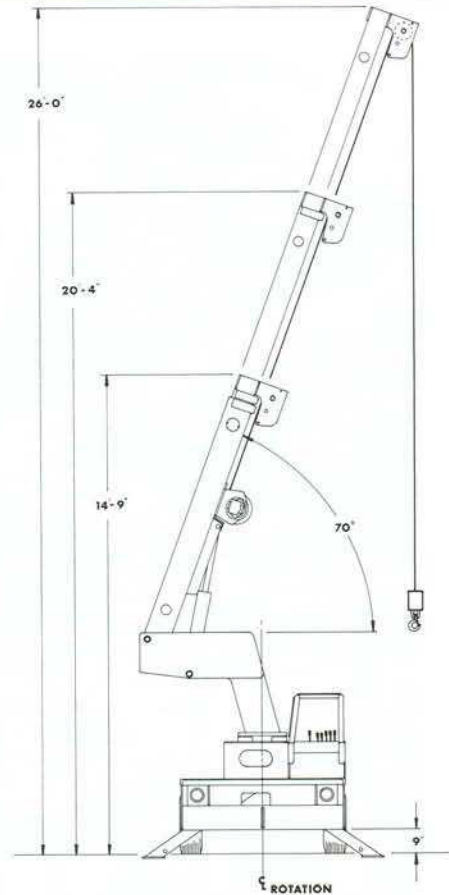
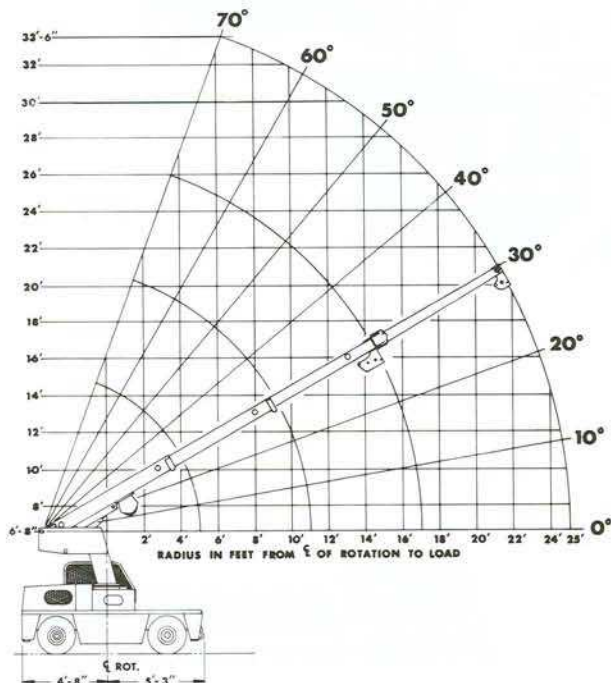
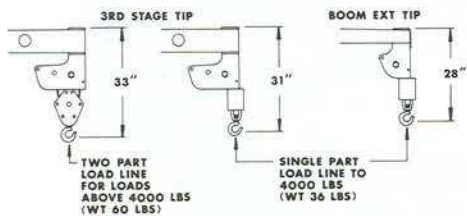
Courtesy of CraneMarket

# IC-35-1A

	LOAD RADIUS FEET	MAIN BOOM CAPACITY IN POUNDS								
		360° ROTATION				OVER FRONT				
		ON RUBBER	ON OUTRIGGERS		ON RUBBER	ON OUTRIGGERS				
MAIN BOOM	3	6000	7000		7000	8000				
	4	5000	6000		6000	6000				
	5	4500	4500		4500	4500				
	6	3400	4350		4350	4350				
	8	1950	3500		3500	3500				
	10	1350	2900		2500	2900				
	12	1000	2500		1900	2500				
	14	800	2050		1550	2200				
	16	650	1650		1250	1950				
	17	600	1500		1150	1650				
8' BOOM EXTENSION	18	550	1350		1100	1350				
	20	450	1200		950	1200				
	22	350	1050		800	1150				
	24	300	900		700	1100				
	25	200	800		600	1000				
	BOOM ANGLE		0°	10°	20°	30°	40°	50°	60°	70°
	CAPACITY		1050	1100	1150	1200	1300	1500	1900	2500

Capacities on outriggers are 85% of tipping loads. Capacities on rubber are 75% of tipping loads. Capacities below **BOLD** line are limited by tipping. Other capacities are limited by structural or hydraulic capabilities.

Caution: Boom extension loads must not exceed main boom capacity.



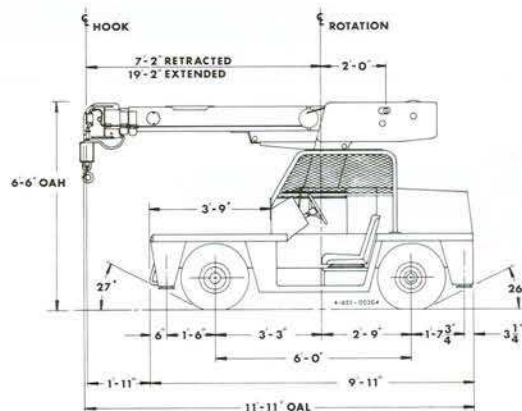
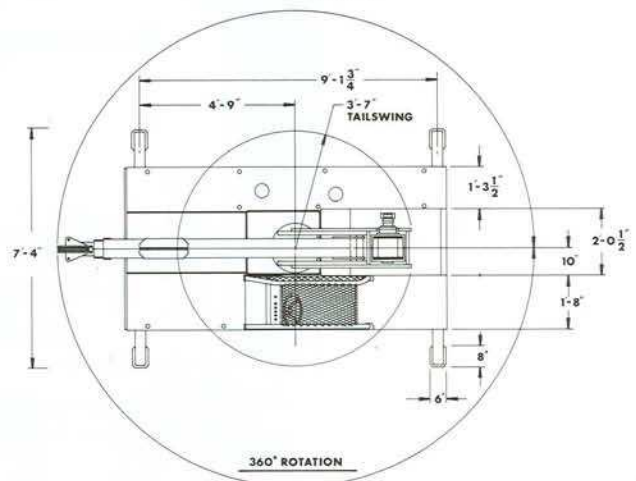
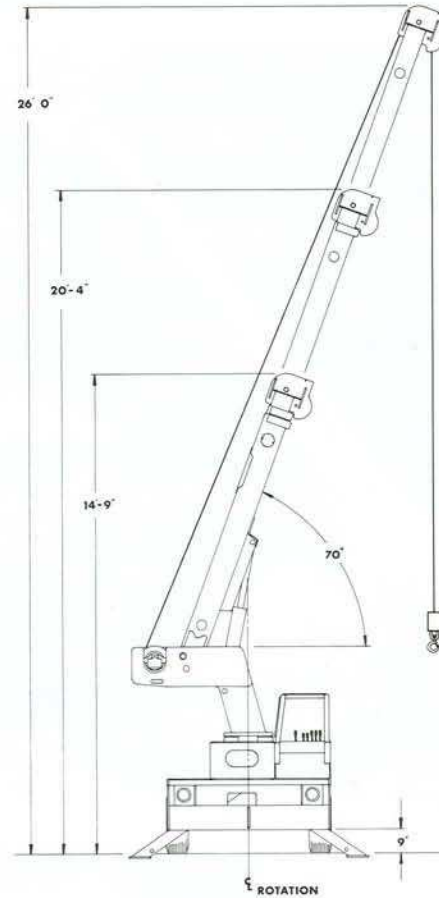
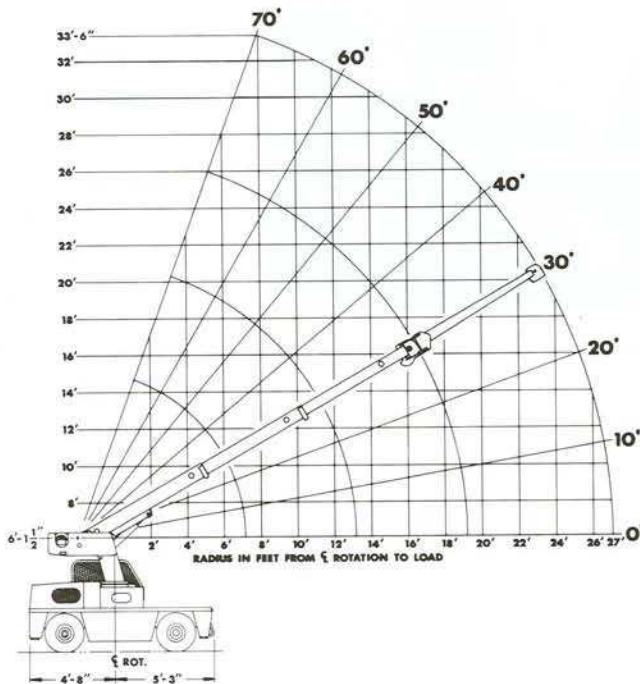
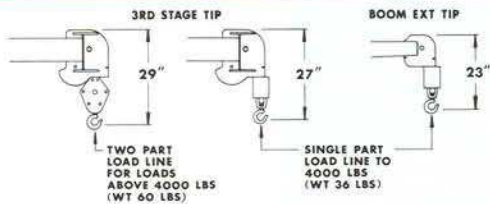


# IC-35-2A

	LOAD RADIUS FEET	MAIN BOOM CAPACITY IN POUNDS								
		360° ROTATION				OVER FRONT				
		ON RUBBER		ON OUTRIGGERS		ON RUBBER		ON OUTRIGGERS		
MAIN BOOM	4	5000		8000		6700		8000		
	5	4000		6800		5800		6800		
	6	2850		5850		5100		5850		
	8	1800		4150		3500		4150		
	10	1250		3200		2350		3400		
	12	900		2350		1750		2850		
	14	700		1850		1350		2450		
	16	600		1500		1100		2150		
	18	500		1250		950		1950		
	19	450		1150		900		1850		
8' BOOM EXTENSION	20	400		1100		850		1600		
	22	300		900		700		1450		
	24	250		800		600		1300		
	26	200		700		500		1150		
	27	150		650		450		1100		
	BOOM ANGLE		0°	10°	20°	30°	40°	50°	60°	70°
	CAPACITY		1100	1200	1300	1450	1600	1850	2300	3500

Capacities on outriggers are 85% of tipping loads. Capacities on rubber are 75% of tipping loads. Capacities below **BOLD** line are limited by tipping. Other capacities are limited by structural or hydraulic capabilities.

Caution: Boom extension loads must not exceed main boom capacity.



## General:

### Weight

- IC-35-1A - 7,500 pounds
- IC-35-2A - 7,100 pounds

**Travel Speed** - 0 to 10 MPH

**Drawbar Pull** - 2,300 pounds

**Gradeability** - 31% (17°)

## Engine:

	Standard	Optional
<b>Make</b>	Ford	Perkins
<b>Model</b>	VSG413	104.19-IDI
<b>No. of Cylinders</b>	4	4
<b>Displacement</b>	79 CID	122 CID
<b>HP @ Governed Speed</b>	42 HP	42 HP

**Fuel Tank Capacity** - 13.5 Gallons

## Electrical:

- **12 Volt System**
- **Lighting Group:**
  - 1 pair headlights & 1 pair taillights
- **Instrument Group:**
  - Fuel, ammeter, oil pressure, water temperature, hydrostatic oil temperature gauges, hourmeter.
- **Back-Up Alarm:**
  - Provides pulsating sound when transmission is in reverse.

## Hydrostatic Pump:

Piston type, driveline driven from engine crankshaft.  
36 GPM @ 3,000 RPM engine. 4,000 PSI relief pressure.

## Axles:

- **Front Drive Axle:**
  - Contains planetary geared torque hubs and high torque hydraulic drive motors. Axle oscillates a total of 1-1/2°.
- **Rear Steering Axle:**
  - Non-oscillating.

## Steering:

Full hydraulic orbitrol unit with one double-acting 2-1/2" cylinder attached to rear axle.

## Tires:

7.50 x 10 pneumatic, 16-ply rating, front & rear

## Brakes:

Front actuated disc service brake built into each torque hub. Overcenter park brake lever provided.

## Outrigger:

Four hydraulic outriggers with box beam construction. Hydraulic cylinders are equipped with direct-connected holding valves.

## Cargo Deck:

29 sq. ft. deck area, 6,000 pounds capacity over front axle.

## Hydraulic System:

- Tandem pump mounted to rear of hydrostatic piston pump.
- Delivers 6 & 12 GPM at 3,000 RPM, 2,600 PSI relief pressure.
- Hydraulic oil tank has 14 gallons capacity.
- Hydraulic oil cooler provided.

## Crane:

### Boom Movement:

- Rotation 360° (Continuous Rotation, Optional)
- Elevation 0 to 70°
- Extension:
  - IC-35-1A 5' to 17'
  - IC-35-2A 7' to 19'

## Boom Speeds:

- Rotation 360° in 26 seconds.
- Elevation 10 seconds.
- Extension 36 seconds.

## Boom Assembly:

Three-section boom assembly equipped with bearing pads, double-acting hydraulic cylinders equipped with direct-connected holding valves and boom angle indicators on each side of boom.

## Boom Rotation:

Heavy-duty ball bearing rotation gear with external teeth. Rotation is powered by hydraulic motor and worm gear drive.

## Hydraulic Winch:

- Turret-mounted planetary winch.
- Hydraulic powered.
- Bare drum line pull of 4,600 lbs. (1st wrap)
- Winch line speed of 86 FPM. (1st wrap)
- 85 ft of 3/8" dia. 6 x 37 IWRC wire rope (B.S. 15,100 lbs.)
- Sheave Block provided for 2-part line.
- Downhaul weight provided for single-part line for loads to 4,000 lbs.

## Anti-Two Block Device with Trip Arm:

Prevents damage to hoist rope and/or machine components. Dumps hydraulics for Telescope Out, Boom Down and Hoist Up.



# IC-35-A

Listed below are brief descriptions of each option available for the IC-35-A Industrial Cranes.  
Consult the IC-35-A Engineering Spec for additional information on each option.

**1. IC-35-1A Industrial Crane  
with 5' to 17' Boom**

**2. IC-35-2A Industrial Crane  
with 7' to 19' Boom**

**ENGINE OPTIONS:**

- 3.** LP Gas System Kit  
Contains all necessary components for LP Gas.
- 4.** Dual Fuel System Kit  
Contains all necessary components to burn LPG or gasoline.
- 5.** Perkins Diesel Engine  
Perkins Model 104.19-IDI
- 6.** Spark Arrester Muffler  
Installed in addition to standard muffler.
- 7.** Engine Shutdown Gauges  
Shuts engine off when high water temperature or low engine oil pressure occurs.

**TIRES:**

- 8.** Solid Rubber Tires  
For applications where hazardous ground conditions exist.
- 9.** Foam Filled Tires  
Standard tires foam filled to prevent flats.
- 10.** Spare Tire & Wheel  
7.50 x 10, 16-ply (front & rear wheels different)

**CHASSIS:**

- 11.** Auxiliary Winch  
Mounted behind front bumper, hydraulically driven with control in operators console (3,000 lbs. @ 20 FPM)
- 12.** Pintle Hook  
Holland "T-60-A" pintle hook mounted on rear of frame. (5-ton capacity)

- 13.** Headlight & Taillight Grilles  
Welded steel protective grilles for headlights and taillights.

- 14.** Lifting Rings  
Consists of four rings, one at each corner of the load deck.

**OPERATOR COMPARTMENT:**

- 15.** Operator Guard  
Tubular steel weldment with heavy expanded steel mesh top section.
- 16.** Operator Guard Cover  
Canvas cover with windows to go over Operator Guard, for inclement weather operations.
- 17.** All Weather Cab  
Rigid-mounted canopy section & removable hinged door. Includes windshield wiper, heater and defroster fan. Cannot be used with Operator Guard.
- 18.** Cab Enclosure  
Rigid-mounted canopy section with windshield wiper only. Does not include door, defroster fan or heater.
- 19.** Floor Mat  
Vinyl mat with foam backing.

**ELECTRICAL:**

- 20.** Outrigger Warning System  
Two-tone alarm is activated when "Outrigger Down" controls are operated
- 21.** Strobe Lights  
Two yellow strobe lights mounted to turntable.
- 22.** Lighted Instrument Gauges  
Instrument gauges equipped with lights for night operations.

- 23.** Boom Work Lights  
One work light mounted to boom to light boom tip and one work light mounted to turret.

**SWING OPTION:**

- 24.** Continuous Rotation  
Hydraulic swivel with four electric slip rings.

**BOOM ATTACHMENTS:**

- 25.** Boom Extension  
8 foot, boom stowable.
- 26.** Wire Rope - IC-35-2A Only  
140 ft. of 3/8" dia.
- 27.** Load Moment Indicator  
Warns operator of impending overload with audible and visual signals. Prevents overload by stopping boom functions that cause overloads. Readouts for load, boom angle, boom length and load radius.
- 28.** Load Indicator  
Three sheave load sensor on top of boom. Readout on top of instrument panel.

Should you, as an end user require an option or special equipment on your IC-35-A that is not listed on our sales literature, please contact your dealer salesperson or the factory to receive a special quoted price.



# IC-35-A



IC-20



IC-200



IC-80

**bmc BRODERSON**  
Manufacturing Corp.

P.O. Box 14770, Lenexa, KS 66285-4770  
(913) 888-0606 • FAX (913) 541-0690