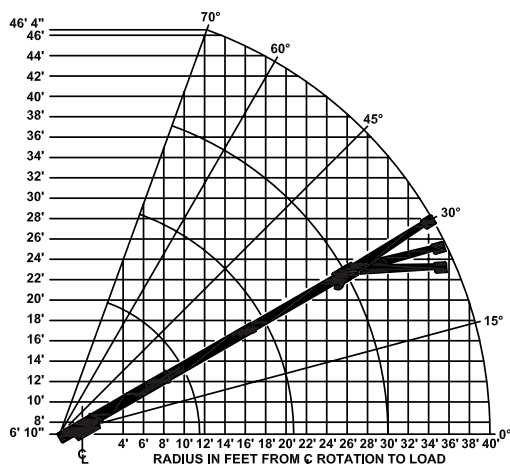


BMC[®] BRODERSON[®] Manufacturing Corp.

Load Chart US Standard

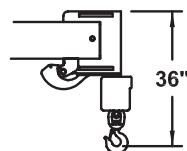
IC-80-3L

Industrial Crane

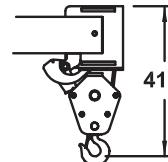


CAPACITIES APPLY TO OPERATION ON FIRM LEVEL SURFACE				
LOAD RADIUS FEET	MAIN BOOM OR EXTENSION CAPACITIES IN POUNDS			
	360° ROTATION		OVER FRONT	
	ON RUBBER	ON OUTRIGGERS	ON RUBBER	ON OUTRIGGERS
MAIN BOOM	5	9400	17000	11400
	6	7550	14000	10000
	8	5600	10000	8100
	10	4300	7700	6100
	12	3200	6100	4450
	14	2550	5200	3400
	16	2050	4400	2700
	18	1650	3900	2200
	20	1350	3400	1800
	22	1150	3050	1550
	24	1000	2750	1350
	26	850	2450	1200
10' BOOM EXT.	28	750	2200	1100
	30	650	1950	1000
	32	450	1750	900
	34	350	1600	800
	36	250	1450	700
	38	200	1300	600
	40	150	1150	500
	10-FOOT BOOM EXTENSION - STRAIGHT OR OFFSET			
	MAIN BOOM ANGLE			
	ANGLE	0°	30°	45°
	† 0°	2250	2600	3200
	† 15°	---	2400	2700
	† 30°	---	2250	2500
			60°	70°
			5000	7000
			3500	4200
			3000	3300

+ USE 0° FOR STRAIGHT BOOM EXTENSION † USE 0°, 15° or 30° FOR OFFSET BOOM EXTENSION



USE SINGLE PART
LOAD LINE FOR
LOADS TO 9000
LBS.
(WT. 90 LBS.)



USE TWO PART
LOADLINE FOR
LOADS TO 18000
LBS.
(WT. 124 LBS.)

LOAD RADIUS IS THE HORIZONTAL DISTANCE FROM THE CENTER OF ROTATION OF THE UNLOADED CRANE TO THE VERTICAL LOAD LINE WITH THE LOAD APPLIED.

EXCEEDING CAPACITY RATINGS OR APPLYING SIDE LOADS TO THE BOOM OR BOOM EXTENSION IS MISUSE, HAZARDOUS, AND VOIDS WARRANTY.

CAUTION: BOOM EXTENSION LOADS MUST NOT EXCEED MAIN BOOM CAPACITY. BOOM EXTENSIONS CAN BE USED ON RUBBER WHEN CRANE IS STATIONARY. DO NOT PICK AND CARRY WITH BOOM EXTENSION DEPLOYED.

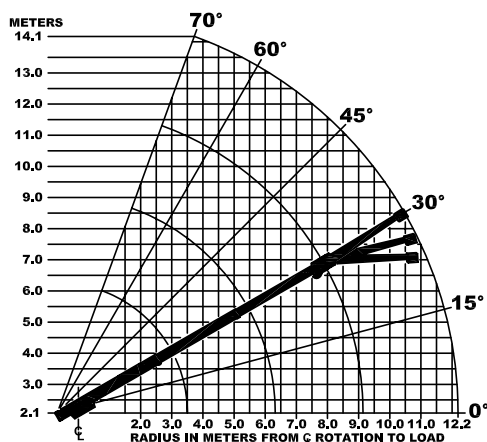
CAPACITIES ON OUTRIGGERS ARE 85% OF TIPPING LOADS. CAPCITIES ON RUBBER ARE 75% OF TIPPING LOADS. CAPACITIES ON IN & DOWN OUTRIGGERS ARE LESS THAN 85% OF TIPPING LOADS. CAPACITIES BELOW BOLD LINE ARE LIMITED BY TIPPING. OTHER CAPACITIES ARE LIMITED BY STRUCTURAL OR HYDRAULIC CAPABILITY.

www.BMCcranes.com
© 2020 Broderon Manufacturing Corp.

Load Chart Metric

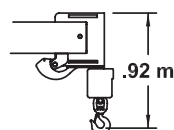
IC-80-3L

Industrial Crane

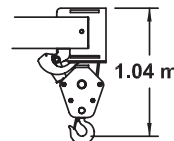


CAPACITIES APPLY TO OPERATION ON FIRM LEVEL SURFACE				
LOAD RADIUS METERS	MAIN BOOM OR EXTENSION CAPACITIES IN KILOGRAMS			
	360° ROTATION		OVER FRONT	
	ON RUBBER	ON OUTRIGGERS	ON RUBBER	ON OUTRIGGERS
MAIN BOOM	1.5	4260	7710	5170
	2.0	3140	5790	4290
	2.5	2470	4400	3580
	3.0	1990	3560	2830
	3.5	1560	2910	2180
	4.0	1270	2520	1720
	4.5	1060	2210	1400
	5.0	890	1950	1170
	5.5	740	1760	990
	6.0	630	1570	840
	6.5	540	1430	730
	7.0	480	1320	650
	7.5	430	1200	580
	8.0	380	1090	530
	8.5	340	1000	500
3 m BOOM EXT.	9.0	290	910	460
	10.0	180	760	390
	11.0	110	650	310
	12.2	60	520	220
	3 METER BOOM EXTENSION - STRAIGHT OR OFFSET			
	MAIN BOOM ANGLE			
	ANGLE	0°	30°	45°
	† 0°	1020	1180	1450
	† 15°	---	1090	1220
	† 30°	---	1020	1130

+ USE 0° FOR STRAIGHT BOOM EXTENSION † USE 0°, 15° or 30° FOR OFFSET BOOM EXTENSION



USE SINGLE-PART
LOAD LINE FOR
LOADS TO 4080 kg
(WT. 40 kg)



USE TWO-PART
LOAD LINE FOR
LOADS TO 8160 kg
(WT. 56 kg)

LOAD RADIUS IS THE HORIZONTAL DISTANCE FROM THE CENTER OF ROTATION OF THE UNLOADED CRANE TO THE VERTICAL LOAD LINE WITH THE LOAD APPLIED.

EXCEEDING CAPACITY RATINGS OR APPLYING SIDE LOADS TO THE BOOM OR BOOM EXTENSION IS MISUSE, HAZARDOUS, AND VOIDS WARRANTY.

CAUTION: BOOM EXTENSION LOADS MUST NOT EXCEED MAIN BOOM CAPACITY. BOOM EXTENSIONS CAN BE USED ON RUBBER WHEN CRANE IS STATIONARY. DO NOT PICK AND CARRY WITH BOOM EXTENSION DEPLOYED.

CAPACITIES ON OUTRIGGERS ARE 85% OF TIPPING LOADS. CAPCITIES ON RUBBER ARE 75% OF TIPPING LOADS. CAPACITIES ON IN & DOWN OUTRIGGERS ARE LESS THAN 85% OF TIPPING LOADS. CAPACITIES BELOW BOLD LINE ARE LIMITED BY TIPPING. OTHER CAPACITIES ARE LIMITED BY STRUCTURAL OR HYDRAULIC CAPABILITY.