

Flèche - Jib - Ausleger - Flecha



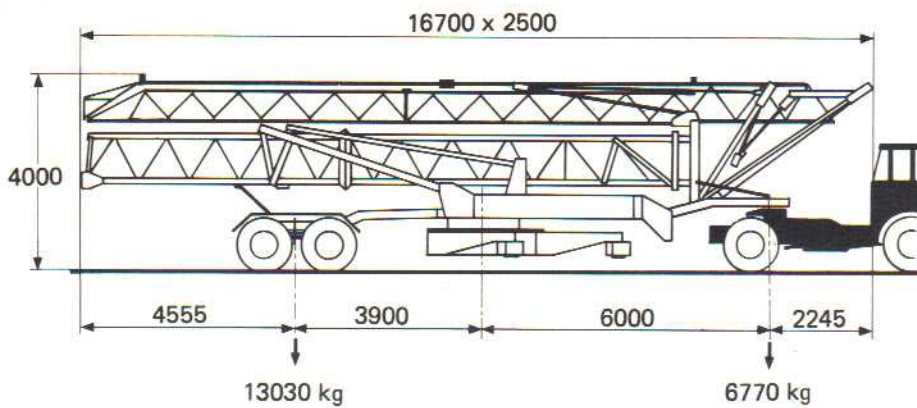
m	kg	14	16	18	20	22	24	26	28	30	32	35	36	38
13	4000	3630	3060	2640	2310	2050	1830	1650	1500	1370	1260	1120	1080	1000
13,2	4000	3720	3140	2700	2370	2100	1880	1700	1540	1410	1300	1150		
13,8	4000	3930	3320	2860	2510	2230	1990	1800	1640	1500				



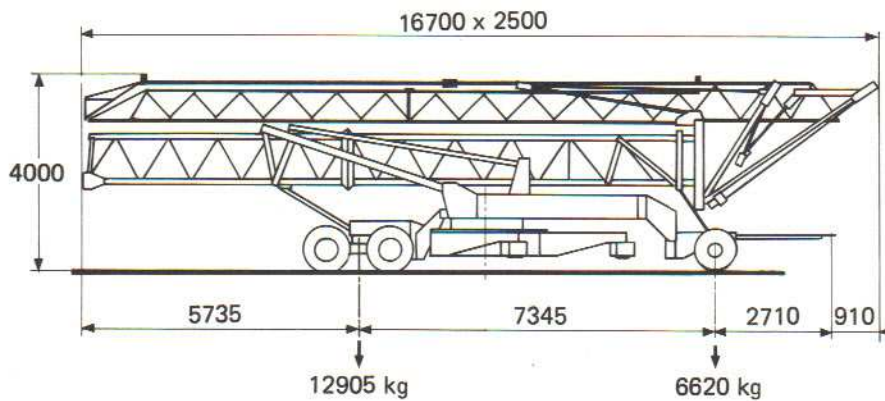
m	kg
23,3	2000
23,8	2000
24,9	2000

24	26	28	30	32	35	36	38
1930	1750	1600	1470	1360	1220	1180	1100
1980	1800	1640	1510	1400	1250		
	1900	1740	1600				

TRANSPORT - TRANSPORT - TRANSPORT - TRANSPORTE

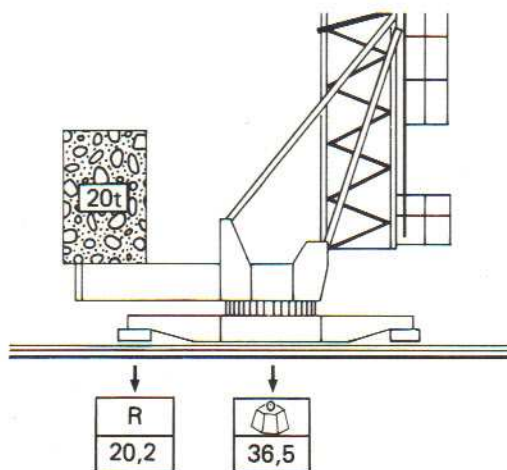


Semi-portée  
Tractor towed  
Sattelauflieger  
Semi-remorque



Tractée derrière camion  
Lorry towed  
LKW - Anhänger  
Remolcable detrás de un  
camion

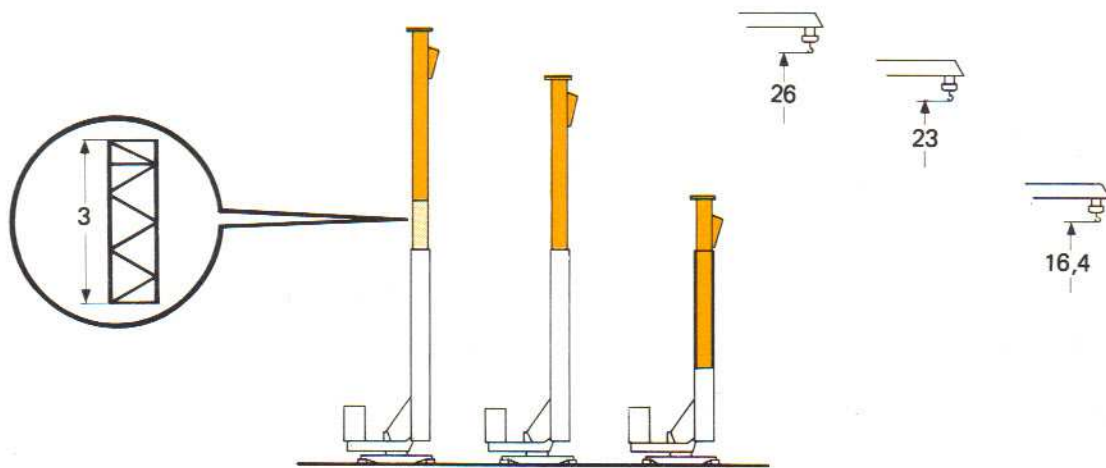
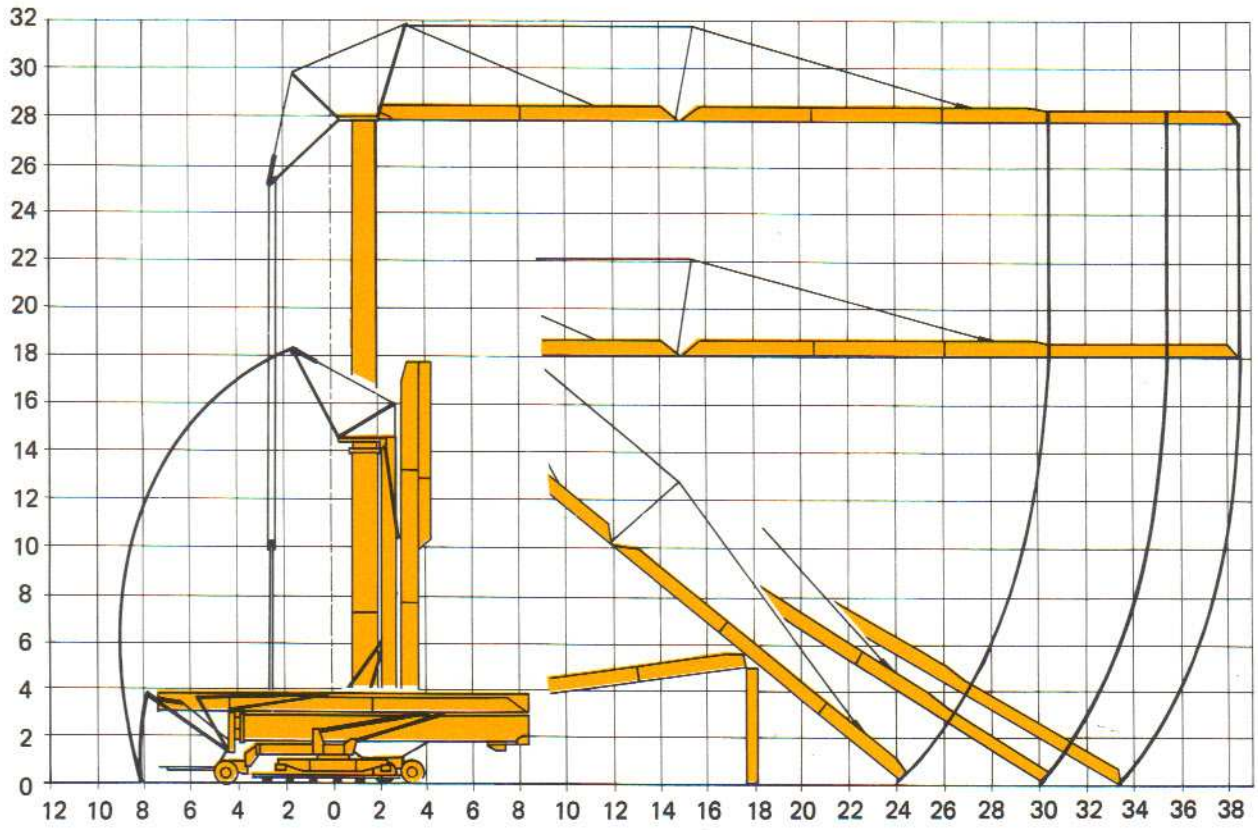
REACTIONS - REACTIONS - ECKDRUCKE - REACCIONES












R Reactions maxi en t  
Maxi reactions ground in t  
Maximale Eckdrücke in t  
Reacciones maxi en t

A vide avec lest et flèche maxi  
Without load with c.w and maxi jib  
Ohne Last mit Ballast und maximalausleger  
Sin carga con lastre y flecha maxima

DEPLIAGE - ERECTION - MONTAGE - MONTAJE



**MECANISMES - MECHANISMS - ANTRIEBE - MECANISMOS**

	Vitesses Speeds Gänge Velocidades	t	m/min	
Levage - <i>Hoisting</i> - Heben - <i>Elevación</i>  11 kW - 15 ch		 2000  4000	6 3	
			 2000  4000	25 12,5
			 1000  2000	50 25
		Chariot - <i>Trolley</i> - Katzfahren - <i>Carro</i> 3 kW - 4 ch 2,2 kW - 3 ch	1 <hr/> 2	
	Orientation - <i>Slewing</i> - Schwenken - <i>Orientación</i> 4,8 kW - 6,5 ch			0,15 - 0,5 - 1 tr/min U/min - rpm
	Translation - <i>Travelling</i> - Kranfahren - <i>Traslación</i> 2 x 1,5 kW - 2 x 2 ch			26

Puissance électrique nécessaire <i>Necessary electric power</i> Anschlusswert Potencia eléctrica necesaria	380 V 50 Hz	Réseau - <i>Main supply</i> Netzstrom - <i>Red</i>	20 KVA
		Groupe électrogène - <i>Stromaggregat</i> Generator set - <i>Grupo electrogeno</i>	30 KVA

**SUD MATÉRIEL**

 1<sup>re</sup> Avenue n° 17

Z.I.

43127 VITROLLES

Tél. (42) 75 00 50 - Télét. -00 504

R.D. GREPAILLÉ B 302 936 330