

Flèche - Jib - Ausleger - Flecha



SM/DM

m	kg
11,8	8000
13,1	8000
14,3	8000
15,3	8000

13	15	17	19	21	23	25	27	29	30	33	35	37	39	40	43	45
7060	5850	4970	4290	3760	3330	2980	2680	2430	2310	2020	1850	1700	1570	1510	1350	1250
	6710	5710	4940	4340	3860	3460	3120	2830	2710	2370	2180	2020	1870	1800		
	7510	6400	5560	4890	4350	3910	3540	3220	3080	2710	2500					
		7010	6090	5370	4780	4300	3900	3550	3400							

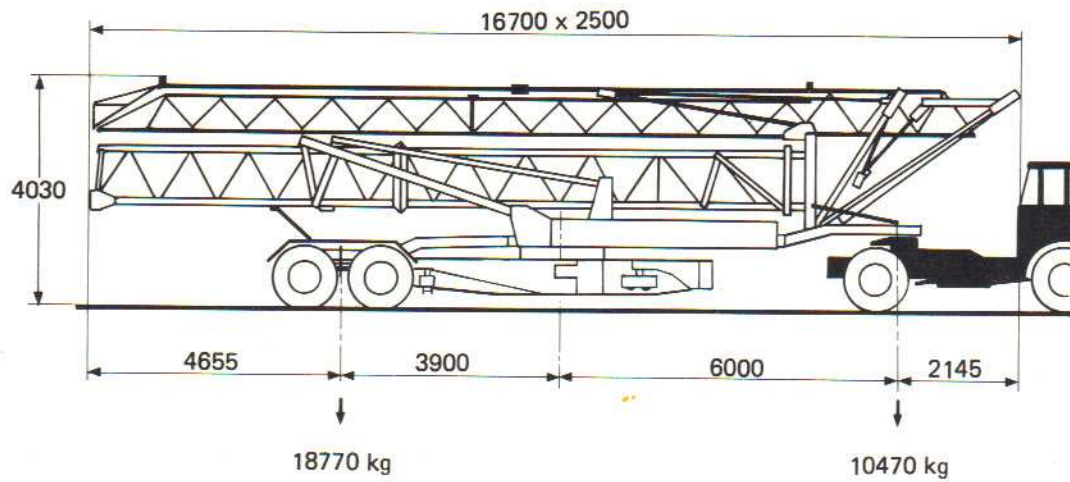


SM

m	kg
21,1	4000
23,5	4000
25,8	4000
27,8	4000

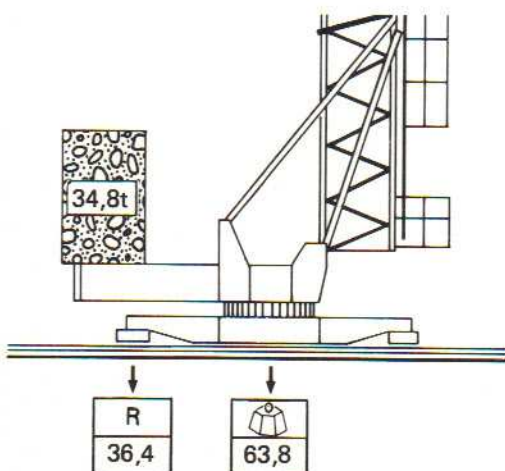
23	25	27	29	30	33	35	37	39	40	43	45
3590	3230	2930	2680	2560	2270	2100	1950	1820	1760	1600	1500
	3710	3370	3090	2960	2620	2440	2270	2120	2050		
		3790	3470	3330	2960	2750					
			3800	3650							

TRANSPORT - TRANSPORT - TRANSPORT - TRANSPORTE




Semi-portée  
 Tractor towed  
 Sattelaufliieger  
 Semi-remorque

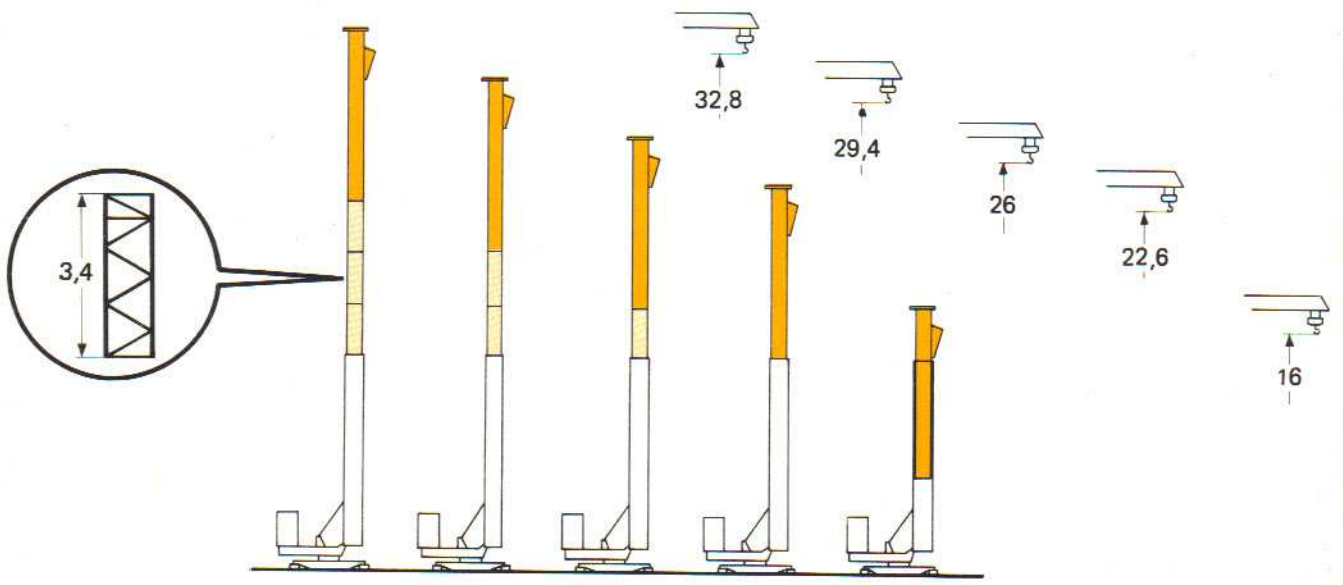
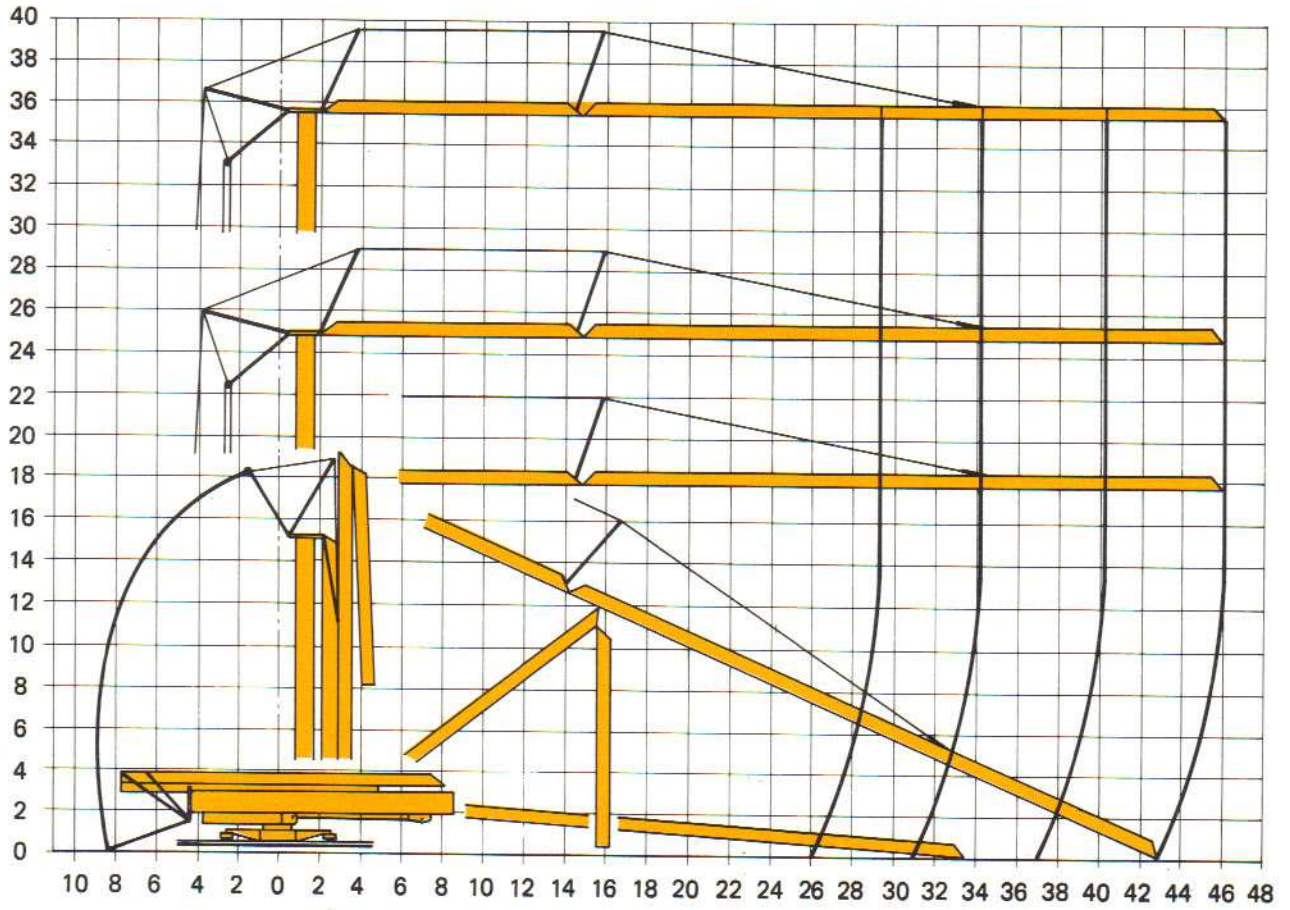
REACTIONS - REACTIONS - ECKDRUCKE - REACCIONES












R Reactions maxi en t  
 Maxi reactions ground in t  
 Maximale Eckdrücke in t  
 Reacciones maxi en t

 A vide avec lest et flèche maxi  
 Without load with c.w and maxi jib  
 Ohne Last mit Ballast und maximalausleger  
 Sin carga con lastre y flecha maxima

DEPLIAGE - ERECTION - MONTAGE - MONTAJE



MECANISMES - MECHANISMS - ANTRIEBE - MECANISMOS

	Vitesse Speeds Gänge Velocidades	t	m/min
Levage - <i>Hoisting</i> - Heben - <i>Elevación</i>  24 kW - 33 ch		 4000	5,5
		 8000	2,75
		 4000	30
		 8000	15
		 2000	60
		 4000	30
Chariot - <i>Trolley</i> - Katzfahren - <i>Carro</i>  4,8 kW - 6,5 ch	3		15 - 30 - 45
Orientation - <i>Slewing</i> - Schwenken - <i>Orientación</i>  2 x 3 kW - 2 x 4 ch			0,1 - 0,5 - 1 tr/min U/min - rpm
Translation - <i>Travelling</i> - Kranfahren - <i>Traslación</i>  2 x 3 kW - 2 x 4 ch			25

Puissance électrique nécessaire <i>Necessary electric power</i> Anschlusswert <i>Potencia eléctrica necesaria</i>	380 V 50 Hz	Reseau - <i>Main supply</i> Netzstrom - <i>Red</i>	50 KVA
		Groupe électrogène - <i>Stromaggregat</i> Generator set - <i>Grupo electrogeno</i>	75 KVA

Modifications réservées. Subject to modification. Änderungen vorbehalten. Modificaciones reservadas.

Printed in France

