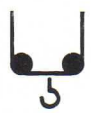


Flèche - Jib - Ausleger - Flecha



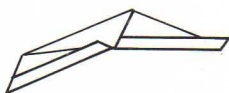
SM/DM

m	kg
9,71	4000
10,26	4000
11,46	4000



SM

m	kg
17,35	2000
18,42	2000
20,76	2000



SM/DM

m	kg
15,9	2000
16,7	2000
18,68	2000



SM

m	kg
16,55	2000
17,5	2000
19,45	2000

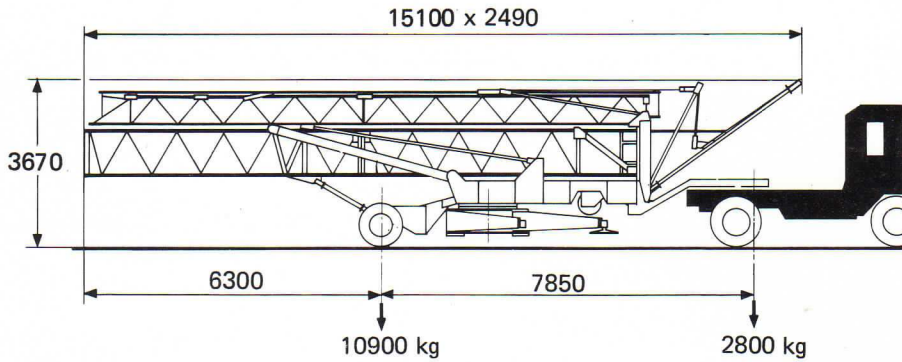
11	13	15	17	19	21	23	25	27	29	30	31	33
3400	2750	2290	1950	1690	1480	1320	1180	1060	960	920	875	800
3660	2960	2470	2110	1830	1610	1430	1280	1150	1050	1000		
	3400	2850	2440	2120	1870	1670	1500					

19	21	23	25	27	29	30	31	33
1790	1580	1420	1280	1160	1060	1020	975	900
1930	1710	1530	1380	1250	1150	1100		
	1970	1770	1600					

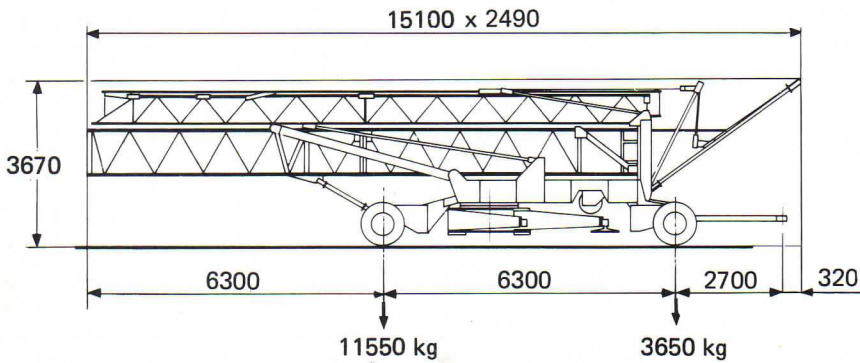
17	19	21	23	23,4	25	27	28,4	29	31,4
1830	1590	1390	1230	1200	1100	990	920	900	800
1970	1700	1500	1330	1300	1190	1070	1000		
	1960	1730	1560	1500					

17	19	21	23	23,4	25	27	28,4	29	31,4
1930	1690	1490	1330	1300	1200	1090	1020	1000	900
	1800	1600	1430	1400	1290	1170	1100		
		1830	1660	1600					

TRANSPORT - TRANSPORT - TRANSPORT - TRANSPORTE

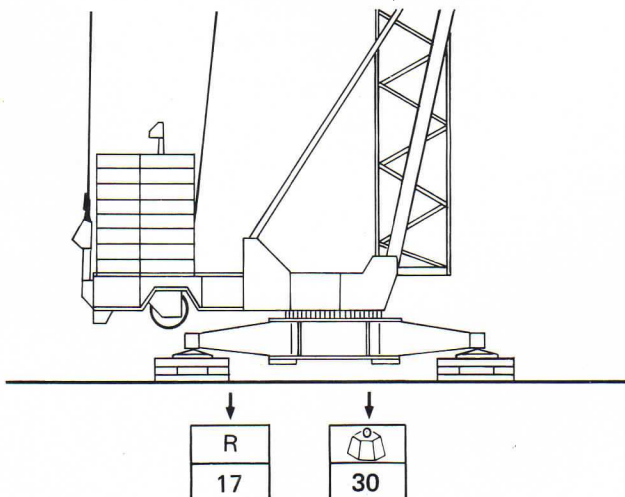


Semi-portée
Tractor towed
Sattelaufliieger
Semi-remorque




Tractée derrière camion
Lorry towed
LKW - Anhänger
Remolcable detrás de un
camion

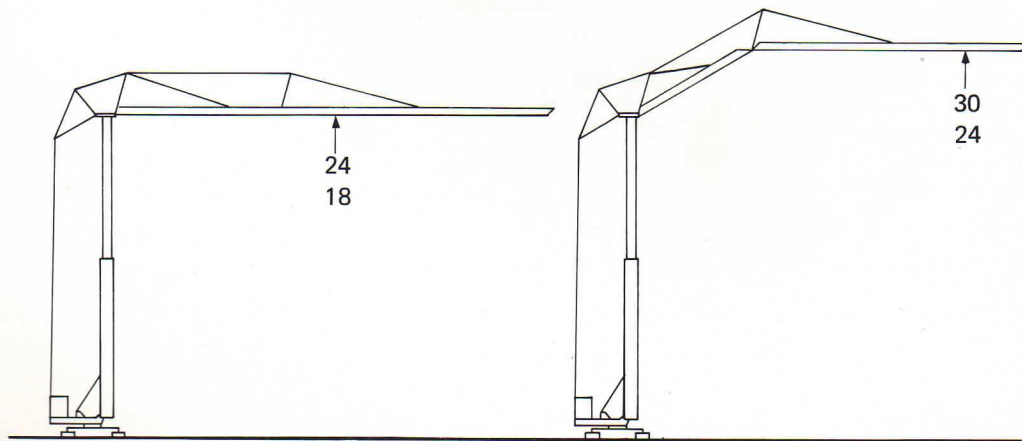
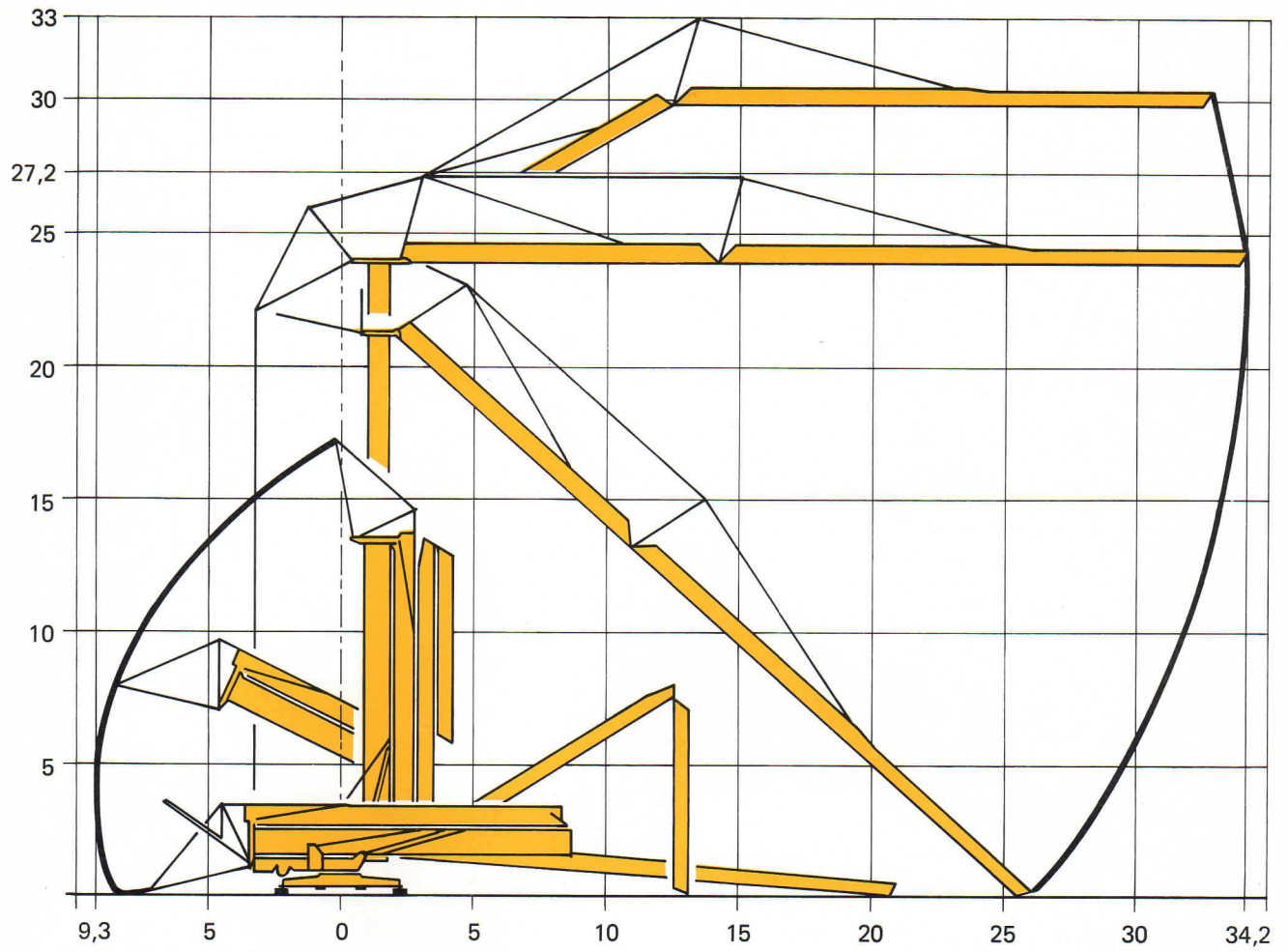
REACTIONS - REACTIONS - ECKDRUCKE - REACCIONES












R Reactions maxi en t
Maxi reactions ground in t
Maximale Eckdrücke in t
Reacciones maxi en t

 A vide avec lest et flèche maxi
Without load with c.w and maxi jib
Ohne Last mit Ballast und maximalausleger
Sin carga con lastre y flecha maxima

DEPLIAGE - ERECTION - MONTAGE - MONTAJE



MECANISMES - MECHANISMS - ANTRIEBE - MECANISMOS

	Vitesse Speeds Gänge Velocidades	t	m/min
Levage - <i>Hoisting</i> - Heben - <i>Elevación</i> T115 - 10 11 kW - 15 ch		 2  4	6 3
			 2  4
			 1  2
		Chariot - <i>Trolley</i> - Katzfahren - <i>Carro</i> Standard - Standardausführung DC 1V 25 - 1,8 kW - 2,5 ch Option - Sonderausführung - <i>Opción</i> DC 2V 30 - 2,2 kW 3 ch	1
	2		14 - 42
	Orientation - <i>Slewing</i> - Schwenken - <i>Orientación</i> OCH 160 - 4,5 kW - 6 ch		0,3 - 0,8 tr/min U/min - rpm
Translation - <i>Travelling</i> - Kranfahren - <i>Traslación</i> Version voie droite - <i>Straight track version</i> Ausführung gerade Schienenbahn - <i>Versión vía rectá</i> TG 260 C - 2 x 2,2 kW - 2 x 3 ch Version voie courbe - <i>Curved track version</i> Ausführung Kurvengleis - <i>Versión vía curvá</i> TB 260 C - 2 x 2,2 kW - 2 x 3 ch		25	
		25	

Puissance électrique nécessaire <i>Necessary electric power</i> Anschlusswert <i>Potencia electrica necesaria</i>	380 V 50 Hz	Reseau - <i>Main supply</i> Netzstrom - <i>Red</i>	25 KVA
		Groupe électrogène - <i>Stromaggregat</i> Generator set - <i>Grupo electrogeno</i>	33 KVA

DIN 15018

Modifications réservées. Substrat modification. Änderungen vorbehalten. Modificaciones reservadas.

Printed in France