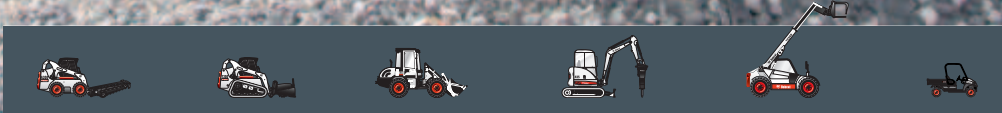




Bobcat®

Construction

Telescopic Handlers



Courtesy of Crane.Market

Whatever you need – wherever you need it

Construction sites are busy places, with building, demolishing, digging, filling and material handling all going on, often at the same time! In this dynamic environment, the telescopic handler has become the multipurpose workhorse. From setting up your site, to getting your materials where you need them, to your final clean-up, your Bobcat telescopic handler offers maximum manoeuvrability and versatility.

■ Everything within reach

Your telescopic handler will be the first machine on your site, and the last to leave. So it has to be the right fit. Our booms are ideal for most sites, offering the reach and power to lift even your heavier loads. Our complete series ensures that you'll find the handler to meet your needs. Ranging from 5 metre to 17 metre booms, we have got telescopic handlers that go from levelling soil up to positioning roof beams.





Heavy duty tasks need heavy duty machines

Whether you're moving prefabricated wall panels or pouring concrete, you demand a lot from your Bobcat telescopic handler, so we build them to be robust. We're pioneers in designing machines that keep working, no matter what they are called upon to do. On rough terrain, and for tough jobs, you can rely on your Bobcat telehandler.

■ Safe as a house

With all the activity on site, maximum safety is essential. Every Bobcat telescopic handler offers electronically-controlled hydrostatic transmission. So you keep 100% control over the machine's movement, even when shifting a difficult load in the tightest space.





See it and believe it

Safety and performance are both improved when the operator has good visibility. Our carefully designed cab gives you a 360° view. You can keep a close eye on the attachment, and all around the machine.

■ Move around and about

There are always materials to shift, in all sorts of spaces. Bricks, beams, boards and more have to be put where they're needed – even if that means way up high or into a building. Attachments like pallet forks, extension jibs and buckets can handle any materials, while the winch attachment is ideal for exact load positioning.



■ Versatility to do more

Bobcat telescopic handlers do a lot more than move loads from one spot to another. With all the attachments available, your telescopic handler can handle almost any task. From digging and moving sand or dirt, to mixing concrete, to sweeping up and removing waste – this machine saves you time and money.

And with features like continuous flow, hydrostatic transmission and joystick control – all standard on Bobcat telescopic handlers! – you really can use it for just about anything on your worksite.



Your Bobcat telescopic advantage

Our range of versatile and reliable compact telescopic handlers is perfectly suited to construction site work.

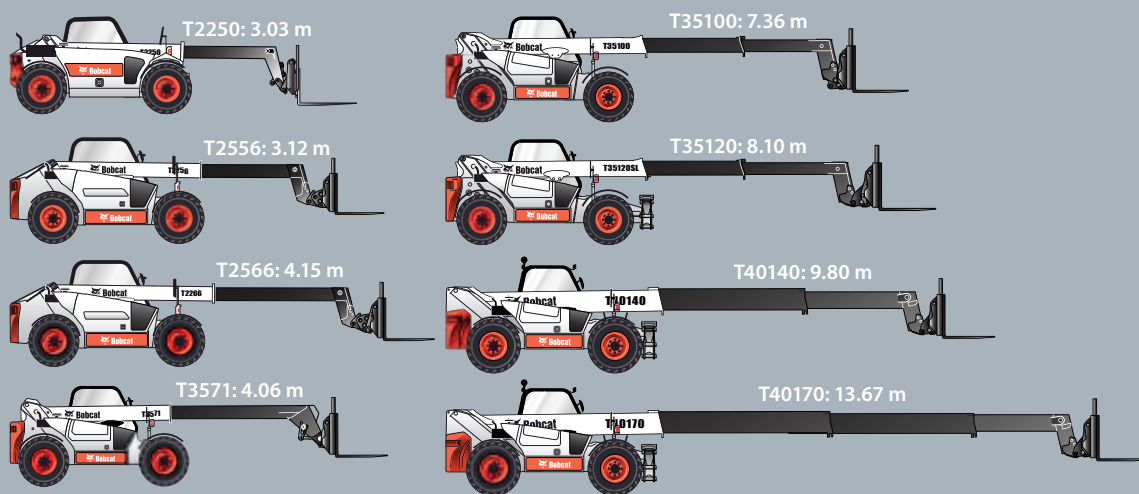
Each offers a combination of comfort, performance and safety to ensure that your worksite runs efficiently and productively.

Perfect control and smooth handling

With the electronically regulated hydrostatic transmission, the operator can place a load with precision, even high up or far from the machine.



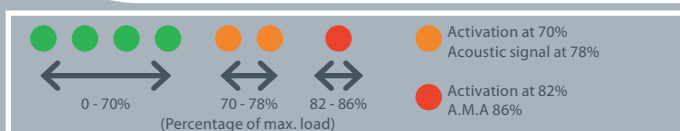
Thanks to the special design and the outstanding stability of our telescopic handlers, the load stays in front of the tyres, and can be placed without bringing the machine too close to buildings.



State-of-the-art operation and safety

All Bobcat telescopic handlers are equipped as standard with Longitudinal (LSI) ① Stability Indicators combined with an Aggravated Movements Arrestor (AMA). When the load approaches the maximum authorised capacity, the red load status indicator lights up.

The inching pedal ② slows forward movement without changing engine speed. The operator can drive the machine in creep mode while maintaining full engine speed for lifting.





The joystick with thumb wheels ③, standard on the whole range, offers easy control of the proportional auxiliary functions and boom movements.

■ It's Bobcat DNA

Compact package but still optimum stability

The compact stabilizers offer good visibility of the attachment and the surroundings while keeping the machine stable at all times.

■ Service and serviceability back-up

Bobcat telescopic handlers are built to keep working, with minimum downtime. So you enjoy 100% efficiency.

- Perkins 1104D-44TA turbo engine
- Extensive dealer network
- Maintenance & cleaning ④ is a breeze thanks to easy access to components and control points.



④

**T2250****T2556****T2566**

PERFORMANCE

		Bob-Tach™		Quick-Tach	
Maximum lift capacity	kg	2200		2500	2500
Maximum lift height (on tyres)	mm	5250	5210	5510	6350
Maximum forward reach (on tyres)	mm	3010	3030	3110	4150
Lift capacity at full height (on tyres)	kg	2200		2500	2200
Lift capacity at full reach (on tyres)	kg	1000	950	1100	900
Crowding force	daN	2100		3600	3600

WEIGHTS

Weight (unladen)	kg	4695	4820	5350
------------------	----	------	------	------

ENGINE

Make / Model		KUBOTA / V3800-DI turbo	PERKINS / 1104D-44TA turbo	PERKINS / 1104D-44TA turbo
Fuel / Cooling		Diesel / Liquid	Diesel / Liquid	Diesel / Liquid
Rated power (ISO TR 14396) at 2200 RPM	kW (HP)	56 (75)	74.5 (100)	74.5 (100)
Maximum torque at 1400 RPM	Nm	274	410	410
Number of cylinders		4	4	4
Displacement	l	3.8	4.4	4.4

TRACTION

Standard tyres		14x17.5	400/70x20	400/70x20
Low speed (forward/reverse)	km/h	0-7	0-8	0-8
High speed (forward/reverse)	km/h	0-25	0-30	0-30
Driving modes		Direct drive / soft drive	Direct drive / soft drive	Direct drive / soft drive
Optional tyres				

DRIVE SYSTEM

Transmission		Hydrostatic with electronic regulation	Hydrostatic with electronic regulation	Hydrostatic with electronic regulation
Main drive		2 speed hydrostatic motor	2 speed hydrostatic motor	2 speed hydrostatic motor

HYDRAULIC SYSTEM

Pump type		Gear pump with LS valve	Gear pump with LS valve	Gear pump with LS valve
Distributor		Flow sharing	Flow sharing	Flow sharing
Combined pump capacity	l/min	85	123	123
Working pressure	bar	240	250	250

BRAKES

Service brake		Oil-immersed disc	Oil-immersed disc	Oil-immersed disc
Parking and emergency brake		Negative brake with hydraulic command	Negative brake with hydraulic command	Negative brake with hydraulic command

DIMENSIONS

Overall width	mm	1840	1984	1984
Overall length (with carriage)	mm	4000 - 3984	4408	4905
Overall height	mm	1985	2096	2096
Ground clearance	mm	294	435	435
Wheelbase	mm	2300	2500	2500
External turning radius (at tyres)	mm	3170	3744	3744
Internal turning radius	mm	1500	1475	1475

**T3571 (L)****T35100 (L)****T35100 SL****T35120 L****T35120 SL****T40140****T40170**

3500	3500	3500	3500	3500	4000	4000
7120	10200 (10090)	10000 / 10230	11620	11620 / 11850	13430 / 13610	17430 / 17180
4060	6910	6400 / 6500	8100	8100 / 8040	9800 / 9700	13730 / 13670
3000	750 (3000)	2000 / 3000	2300	2300 / 3200	2500 / 4000	1250 / 2500
1350	600	600 / 1000	400	350 / 1200	250 / 1300	0 / 560
4000	4600	4600	4600	4600	5000	5000

7070 (7100)	7200 (7235)	7890	7770	8240	10000	10970
-------------	-------------	------	------	------	-------	-------

PERKINS / 1104D-44TA turbo	PERKINS / 1104D-44TA turbo	PERKINS / 1104D-44TA turbo	PERKINS / 1104D-44TA turbo	PERKINS / 1104D-44TA turbo	PERKINS / 1104D-44TA turbo	PERKINS / 1104D-44TA turbo
Diesel / Liquid	Diesel / Liquid	Diesel / Liquid	Diesel / Liquid	Diesel / Liquid	Diesel / Liquid	Diesel / Liquid
74.5 (100)	74.5 (100)	74.5 (100)	74.5 (100)	74.5 (100)	74.5 (100)	74.5 (100)
410	410	410	410	410	410	410
4	4	4	4	4	4	4
4.4	4.4	4.4	4.4	4.4	4.4	4.4

400/70x20	400/70x20	400/70x20	400/70x20	400/70x20	400/80x24	400/80x24
0-7	0-7	0-7	0-7	0-7	0-8	0-8
0-30	0-30	0-30	0-30	0-30	0-30	0-30
Direct drive / soft drive 24" tyres	Direct drive / soft drive 24" tyres	Direct drive / soft drive	Direct drive / soft drive	Direct drive / soft drive	Direct drive / soft drive	Direct drive / soft drive

Hydrostatic with electronic regulation	Hydrostatic with electronic regulation	Hydrostatic with electronic regulation	Hydrostatic with electronic regulation	Hydrostatic with electronic regulation	Hydrostatic with electronic regulation	Hydrostatic with electronic regulation
2 speed hydrostatic motor	2 speed hydrostatic motor	2 speed hydrostatic motor	2 speed hydrostatic motor	2 speed hydrostatic motor	2 speed hydrostatic motor	2 speed hydrostatic motor

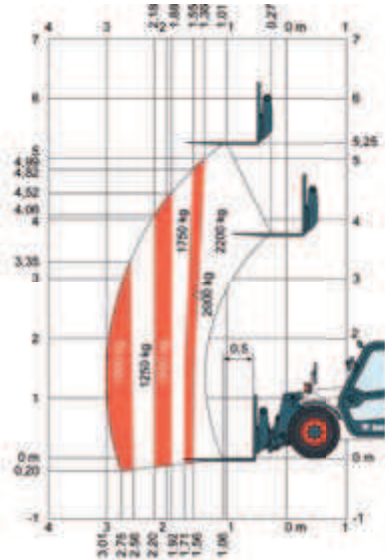
Gear pump with LS valve	Gear pump with LS valve	Gear pump with LS valve	Gear pump with LS valve	Gear pump with LS valve	Gear pump with LS valve	Gear pump with LS valve
Flow sharing	Flow sharing	Flow sharing	Flow sharing	Flow sharing	Proportional electro-hydraulic	Proportional electro-hydraulic
135	135	135	135	135	135	135
265	265	265	265	265	250	250

Oil-immersed disc	Oil-immersed disc	Oil-immersed disc	Oil-immersed disc	Oil-immersed disc	Oil-immersed disc	Oil-immersed disc
Negative brake with hydraulic command	Negative brake with hydraulic command	Negative brake with hydraulic command	Negative brake with hydraulic command	Negative brake with hydraulic command	Negative brake with hydraulic command	Negative brake with hydraulic command

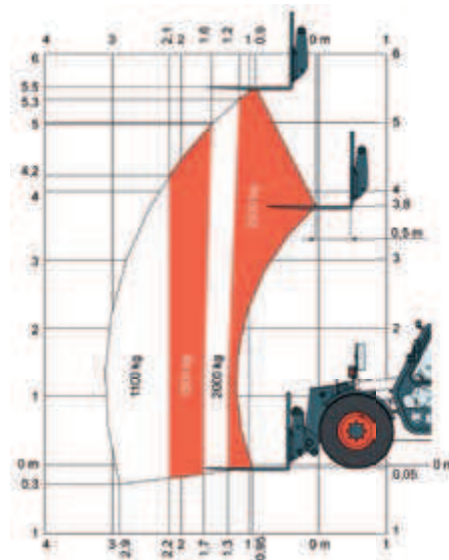
2216	2216	2216	2216	2216	2394	2394
5254	5070	5584	5584	5584	6099	6210
2295	2295	2295	2295	2295	2473	2473
419	419	419	419	419	503	503
2850	2850	2850	2850	2850	2850	2850
3900	3900	3900	3900	3900	4260	4260
1370	1370	1370	1370	1370	1560	1560

Load charts

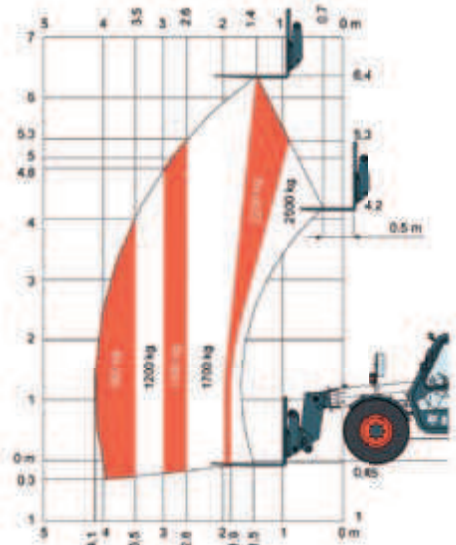
T2250: With forks and 14 x 17.5 tyres, with Bob-Tach™



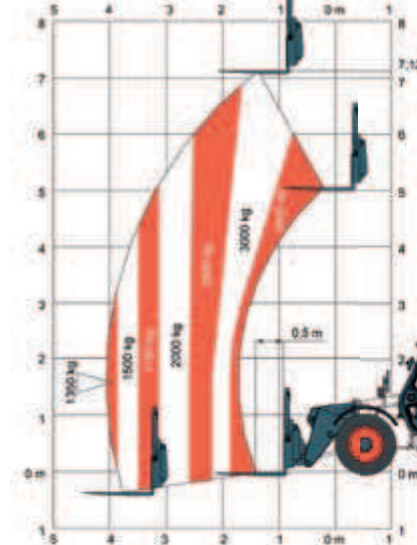
T2556: With forks and TITAN 400/70 x 20 tyres



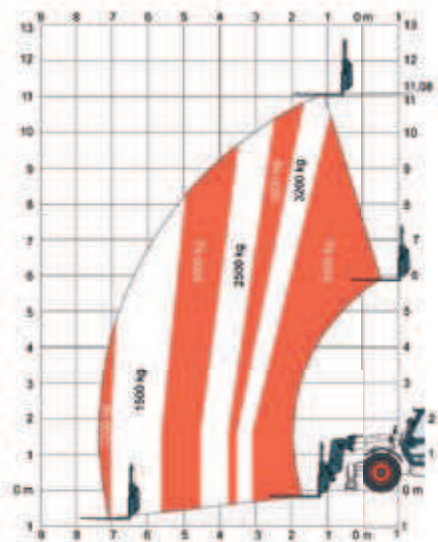
T2566: With forks and TITAN 400/70 x 20 tyres



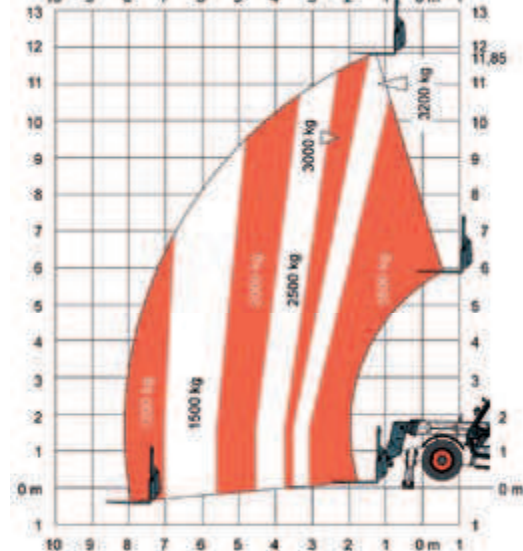
T3571L: With forks and TITAN 400/70 x 20 150B 166A2 LIFT RIGGER II tyres



T35100SL: With forks and TITAN 400/70 x 20 150B 166A2 LIFT RIGGER II (standard) tyres – on stabilizers

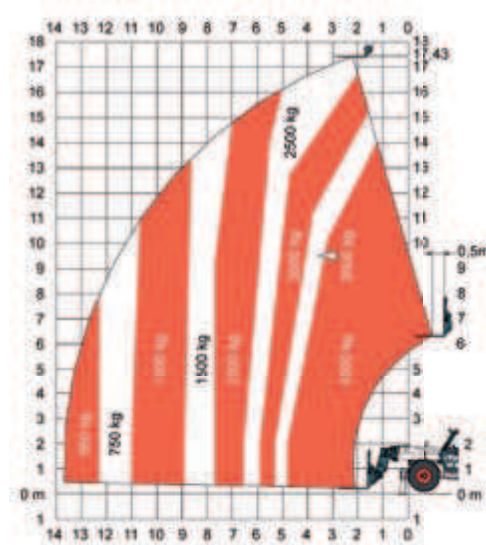
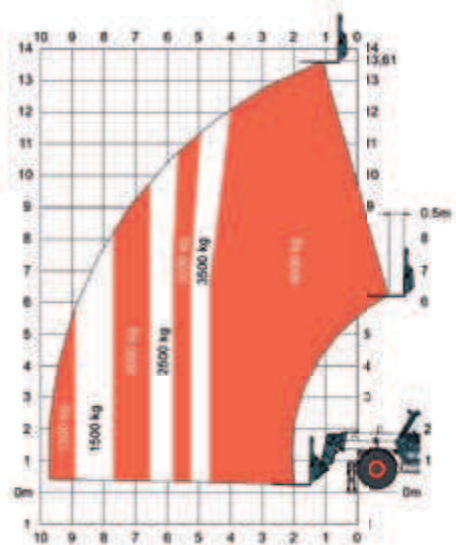


T35120SL: With forks and TITAN 400/70 x 20 150B 166A2 LIFT RIGGER II tyres – on stabilizers



T40140: With forks and standard 400/80x24 tyres & DUNLOP 400/80x24 156B T37 TL tyres – on stabilizers

T40170: With forks and standard 400/80x24, DUNLOP 400/80x24 156B T37 TL tyres – on stabilizers



Options and attachments

	T2250	T2556	T2566	T3571 (L)	T35100 (L)	T35100 SL	T35120 L	T35120 SL	T40140	T40170
OPTIONS										
Protective grill for windshield	X	X	X	X	X	X	X	X	X	X
Roof window wiper	X	X	X	X	X	X	X	X	X	X
Air conditioning	X	X	X	X	X	X	X	X	X	X
Boom light	X	X	X	X	X	X	X	X	X	X
2nd auxiliary hydraulic line on boom	X	X	X	X	X	X	X	X	X	X
Cold weather starting kit		X	X	X	X	X	X	X	X	X
Fan inverter		X	X	X	X	X	X	X	X	X
Auto cleaning air prefilter		X	X	X	X	X	X	X	X	X
Cyclonic air prefilter		X	X	X	X	X	X	X	X	X
Air suspension seat		X	X	X	X	X	X	X	X	X
Hydraulic Quick-Tach	X	X	X	X	X	X	X	X	X	X
Speed Management System – SMS	X	X	X	X				X	X	X
Rear auxiliary hydraulics	X	X	X	X	X	X	X	X		
Stabilizer boom extended security						X		X	X	X
Stabilizer security 25°						X		X	X	X
Man platform installation								standard	X	X
Multifunction remote control								X	X	X

ATTACHMENTS										
Bucket, Digging and Loading	X	X	X	X	X	X	X	X	X	X
Crane Jib	X	X	X	X	X	X	X	X	X	X
Extension Jib	X	X	X	X	X	X	X	X	X	X
Man Platform 1 m ²								X	X	X
Man Platform 2.4 m ² , extendable to 4 m ²								X	X	X
Mixing Bucket		X	X	X	X	X	X	X	X	X
Pallet Forks	X	X	X	X	X	X	X	X	X	X
Sweeper	X	X	X	X	X	X	X	X	X	X

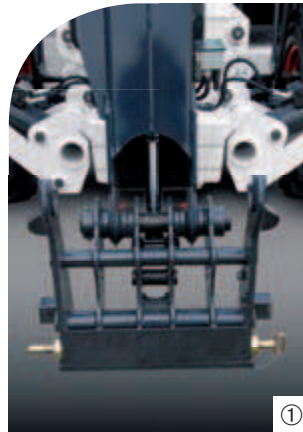
Please feel free to contact your local dealer for more information on all options and attachments available.

Ready, set... attach!

With our range of rugged, job-specific attachments, your Bobcat telescopic handler becomes even more versatile and cost effective for your construction work. High performance, reliability and durability: you know it's a Bobcat machine!

■ Quick-mounting systems

Our Quick-Tach mounting system is renowned for good reasons: it's strong and robust, and makes changing attachments on-site a breeze. Whether you choose the manual ① or hydraulic ② Quick-Tach version, hooking up and removing attachments is quick, safe and easy.



■ T2250: versatile as a Bobcat loader

Thanks to the unique Bob-Tach™ mounting system, the T2250 is compatible with most Bobcat loader attachments. Changing between them is quick and easy.



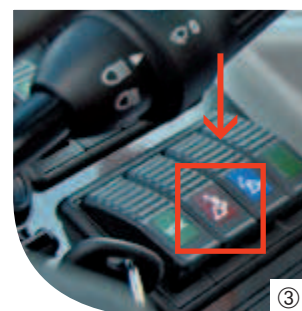
■ Make fast work of tough jobs

The optimized 'Z' bar kinematics increase bucket dumping and crowding angles. This speeds up loading jobs, so overall operation is faster.



■ Smooth hydraulic release pressure

Trapped line pressure can really make changing attachments an unpleasant task. With our unique pressure release system ③, you can easily release trapped pressure. Attachment changes remain smooth and effortless.





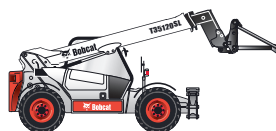
MAN PLATFORM 1 M²



MAN PLATFORM 4 M²



CRANE JIB



EXTENSION JIB



The 1 m² platform is made of galvanized steel. It is fast and easy to set up and allows you to access any kind of work space quickly and safely.

The 4 m² platform make accessing aerial work spaces simple, quick and safe. Fast and easy to set up, the platform can accommodate several persons at once. The platform must be used on stabilizers. It extends from 2.4 m² to 4 m² in 10 seconds and rotates 90° in both directions.

Add a crane jib and your telescopic handler is turned into a crane, but with all the advantages of its mobility and versatility. The use of a crane jib increases the working scope considerably.

The extension jib further increases lifting height and reach. Using this attachment, the telescopic handler can position loads in places which are difficult to access by conventional means.



PALLET FORKS



BUCKET, DIGGING & LOADING



MIXING BUCKET



SWEEPER



Pallet forks can pick up and place large pallets of construction materials into aerial work environments. Whether fixed or floating, pallet forks increase the flexibility of the telescopic handler, and can also be used for removing large bags of debris during clean-up. They are especially handy when travelling on the road.

Tackle the toughest digging and material handling tasks with our robust digging buckets. They offer good visibility and excellent breakout force for digging and easy bucket filling. Available in a range of capacities, with or without teeth.

We recommend our mixing bucket if you're involved in maintenance of concrete paving, sewers, kerbs and gutters.

This versatile attachment collects and dumps dirt and debris. You can use it in forward or reverse, and also to spread material evenly across a surface. An optional gutter brush is available.



www.bobcat.eu



Bobcat®

