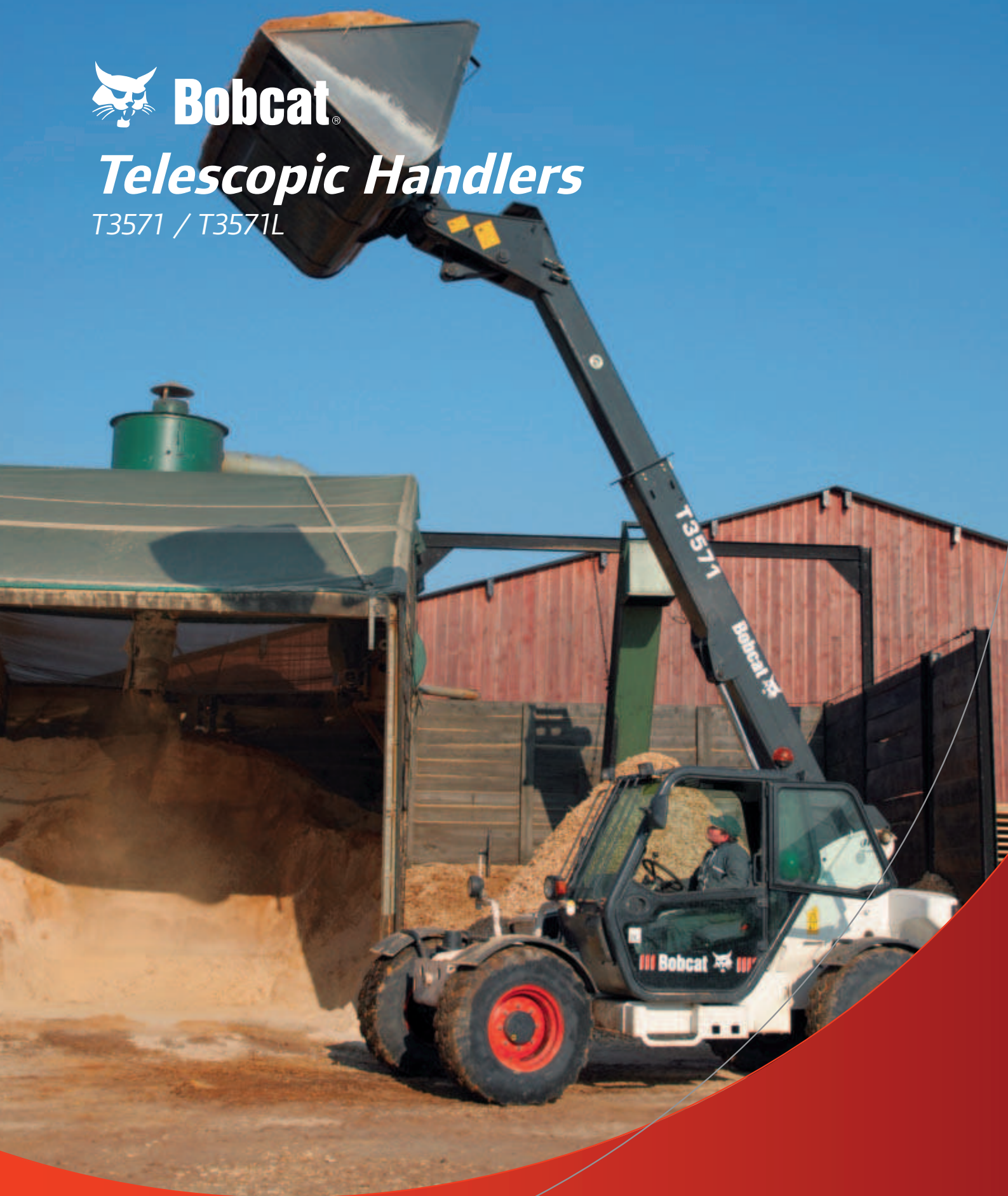




Bobcat®

Telescopic Handlers

T3571 / T3571L



Ingersoll Rand

Compact Vehicle Technologies

Courtesy of Crane.Market

Extending your reach

Extended strength and performance

The Bobcat T3571(L) Telescopic Handler blends impressive power, innovative engineering and the highest performance in a single machine. It lets you lift, handle and place all kinds of materials with ease – and its 7 metre lift height makes loading and unloading lorries from the side simple.

The light, robust, unitised frame gives it strength to load, unload, dig, grade and back-fill as much as heavier machines in the same class.



For rough work on uneven ground, our T3571L model has a built-in frame-levelling feature, providing a tilt correction of six degrees left and right.

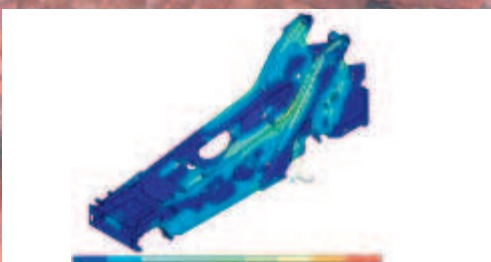
Extended durability

The T3571(L) is designed for durability and easy maintenance. Its tilt cylinder and hydraulic hoses are well protected, housed in the nose of the boom. When travelling over rough terrain the engine and other

vital components are safeguarded by a reinforced underside. The engine is also housed in a cradle which isolates it from dust, helping to keep it clean as well as making it easier to inspect and maintain.



And when the going gets really tough, the reinforced T3571(L) equipped with our heavy duty option is ready to tackle the most demanding applications. Reinforcement plates on the boom and frame, together with a special 'cradle' inside the frame, make the upgraded T3571(L) capable of withstanding high stress. It is ideal for tasks that place the full pushing force of the machine onto the attachment. This option helps to keep stress forces on the boom and frame at an acceptable level.

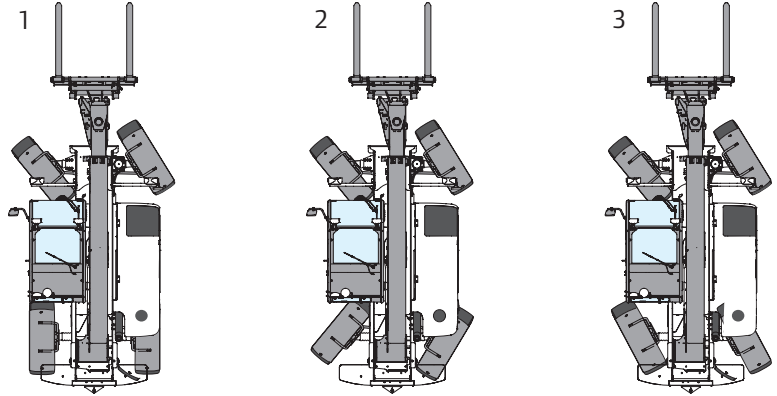


Extended power, agility and precision

The advanced technology in Bobcat Telescopic Handlers boosts your productivity and control.

Go anywhere steering modes

- 1 Front-wheel steer for travelling on roads
- 2 All-wheel steer for on-site handling - small turning circles
- 3 Crab-steer for positioning loads from side to side in restricted areas



A to Z optimization

The T3571(L) makes fast work of tough jobs thanks to optimized 'Z' bar kinematics that increase bucket dumping and crowding angles. This design also speeds up bucket thrust and automatic bucket return when loading, so overall operation is quicker.



Complete control

A simple to use, heavy duty two-speed hydrostatic transmission gives operators accurate control in any application. The two drive modes allow operators to choose the most appropriate driving method.

- **Power**

Coupled with low fuel consumption, the handler delivers 95% performance efficiency.

- **Precision**

Capable of placing loads accurately, thanks to the standard inching pedal.

- **Smooth and flexible**

No need to stop when changing between low and high speed, it's a real time saver. Dynamic braking reduces wear and increases safety.

Big machine performance

Like all Bobcat Telescopic Handlers, the T3571(L) features planetary reduction axles. Normally only found on much larger earth-moving equipment, these axles improve traction and reliability.

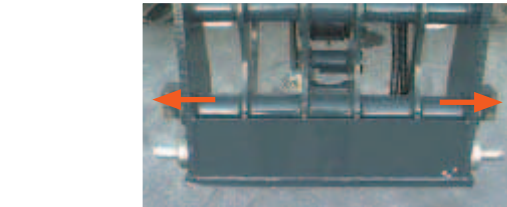
Extended versatility

Truly flexible...

Whatever the application, Bobcat Telescopic Handlers can tackle it. The T3571(L) is part of an extensive range covering construction, farming and landscaping, industry, recycling, plant hire, local authorities and general material handling.



Courtesy of CraneMarket



...truly Bobcat

Easy attachment hook up

Saving time on every job site, our hydraulic Quick-Tach feature allows operators to hook up non-hydraulic attachments without leaving the cab.

Extended comfort and safety; extended productivity

Offering maximum space and user-friendly controls, the T3571(L) cab meets the highest requirements in safety and comfort. Its advanced features and ergonomic styling create a comfortable environment that allows operators to focus on the job. All of which promotes improved productivity.

Moreover, the cab design offers excellent all-round visibility.

Easy-to-use controls

- Single hydraulic joystick for boom and bucket functions with variable control thumb wheels for boom extension and auxiliary functions
- Single shuttle lever for forward, reverse and high and low speeds
- Single lever for turn signals, horn and high-beam road lights
- Tilt / telescopic steering wheel column

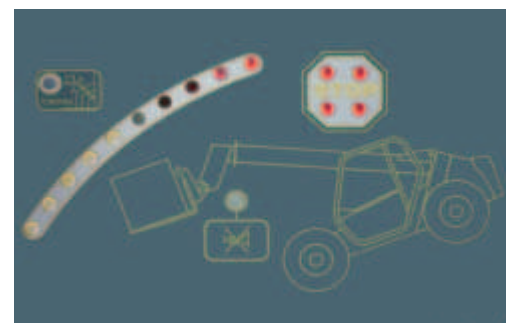
Longitudinal Stability Indicator (LSI)

A row of lights gives a clear indication of the machine's longitudinal stability, alerting the operator to possible forward tilting.

Green, orange and red indicate the varying stability levels, with red warning that more than 87% of maximum load is being handled.

An extra yellow indicator comes on if the machine is under control of the Aggravating Movements Arrestor (AMA).

The AMA is activated once a certain angle is reached, safeguarding the machine from overload and keeping it laterally (T3571L) and longitudinally stable.



Extended service and serviceability



Maintenance

All Bobcat Telescopic Handlers are based on a common platform and consistent design, which simplifies maintenance. The main components and control points are in the same place on every machine.

In addition, excellent access to all key parts keeps routine maintenance as simple and quick as possible – with no specialized tools required.

After sales support

With the industry's finest and most widespread network of distributors, Bobcat equipment has comprehensive support. No matter where you are, you are likely to be close to someone who can offer prompt, professional service.

Warranty

When you buy a Bobcat T3571(L) a warranty is included for parts and labour for one year / 2000 hours* for repairs due to faulty material or workmanship. The warranty can be extended to 24 months/ 3000 hours*, or even 36 months / 4000 hours*.

Financing

Your Bobcat distributor can help you find the best financing option, so you can enjoy the many benefits of using a T3571(L).

*whichever occurs first

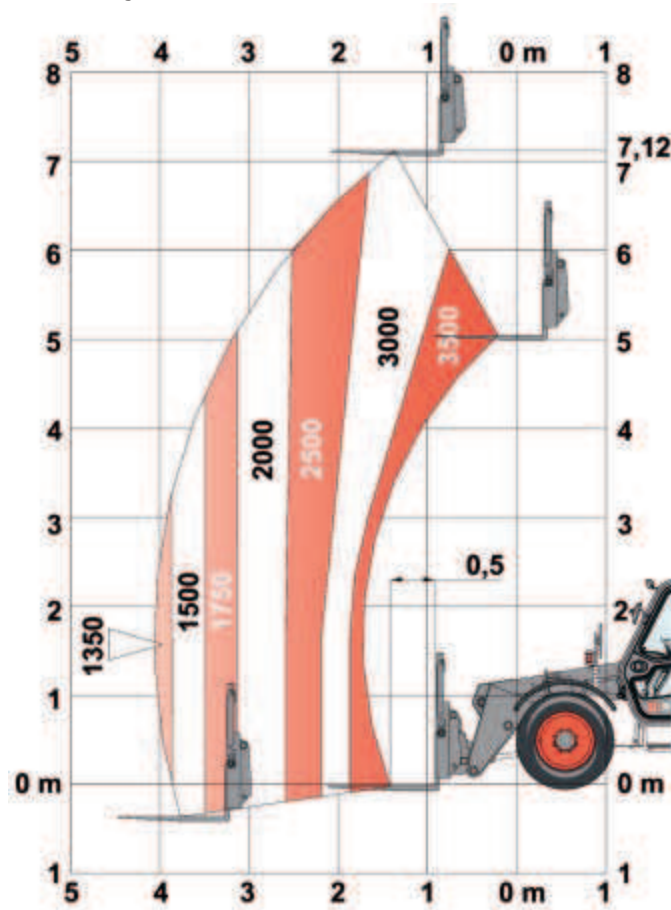
Peace of mind
Use only genuine Bobcat parts



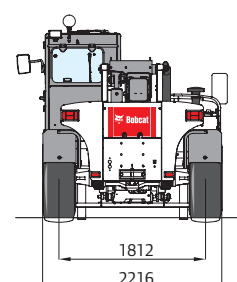
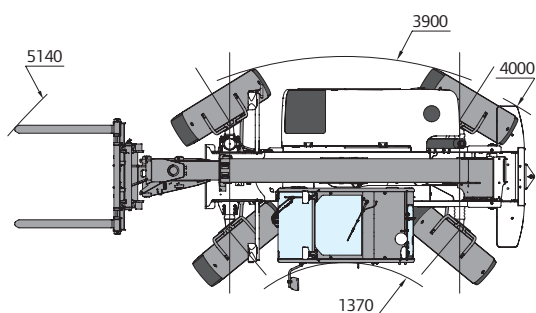
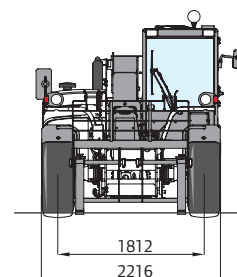
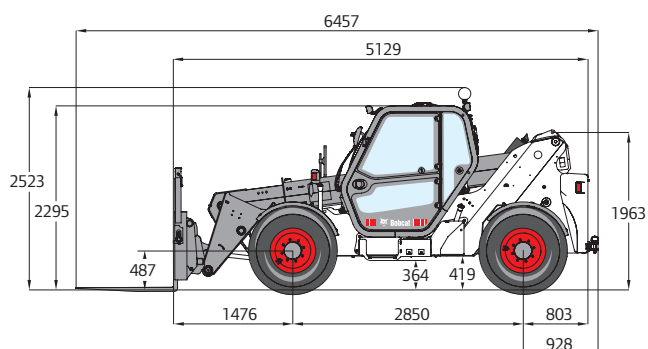
Specifications

T3571(L) Load Chart

With forks and TITAN 400/70 x 20 tyres



T3571 - T3571L Dimensions



Performance		T3571(L)
Lifting height — on tyres		7120 mm
Rated capacity		3500 kg
Capacity (at max. height on tyres)		3000 kg
Capacity (at max. reach on tyres)		1350 kg
Max. reach on tyres		4060 mm
Crowding force		6300 daN
Weights		
Weight (unladen)		6910 kg
Traction		
Standard tyres		400/70x20 150B
Low speed (forward/reverse)		0–7 km/h
High speed (forward/reverse)		0–30 km/h
Driving modes		Direct drive / soft drive
Drive System		
Transmission		Variable displacement hydrostatic pump
Main drive		Hydrostatic motor
Engine		
Make/Model		PERKINS / 1104C-44T turbo
Fuel / Cooling		Diesel / Water
Rated power (DIN 6271) at 2200 RPM		74.5 kW (100 HP)
Maximum torque at 1400 RPM		412 Nm
Number of cylinders		4
Displacement		4.4 l
Hydraulic System		
Pump type		Gear pump
Combined pump capacity		144 l/min
Working pressure		265 bar
Cycle Time		
Lift time - no load		7.5 s
Lower time - no load		4.6 s
Telescope in, time at max. reach - no load		5.6 s
Telescope in, time at max. height - no load		5.6 s
Telescope out, time at max. reach - no load		6.9 s
Telescope out, time at max. height - no load		6.9 s
Brakes		
Engine braking		Hydrostatic
Parking and emergency brake		Mechanical, acting on both axles
Fluid Capacities		
Axles and reduction gears front/rear		9 / 8.1 l
Engine oil		8.5 l
Fuel tank		140 l
Hydraulic reservoir		77 l
Standard Features		
		Hydrostatic transmission, ROPS/FOPS operator cab, Heating, demisting and ventilation, Front and rear washer/wipers, Suspension seat, Two way hydraulic supply at the end of the boom, Narrow hook-up for mounting of the equipment, Mechanical lock of the equipment, Aggravating Movements Arrestor (AMA)
Options		
		Reverse drive alarm, Second hydraulic function on boom, Cab air conditioning, Rear hydraulic hook and mirror, Rotating beacon, Cooling fan reverser for cleaning purpose, Rear hydraulic connection, Trailer brake valve, Work light on boom, Set of blue lights for hen houses, Hydraulic lock of equipment, Yoke and electrical socket, Windscreen grill, Roof windscreen wiper



Ingersoll Rand is a world leader in the field of compact vehicles and equipment. Our widely known Bobcat® brand includes an extensive line of powerful, nimble compact construction equipment and attachments, and our state-of-the-art engineering capabilities and stylish designs are reflected in our world famous Club Car® vehicles.

www.clubcar.com www.bobcat.com www.ingersollrand.com

Bobcat Europe
Drève Richelle 167
B-1410 Waterloo, Belgium