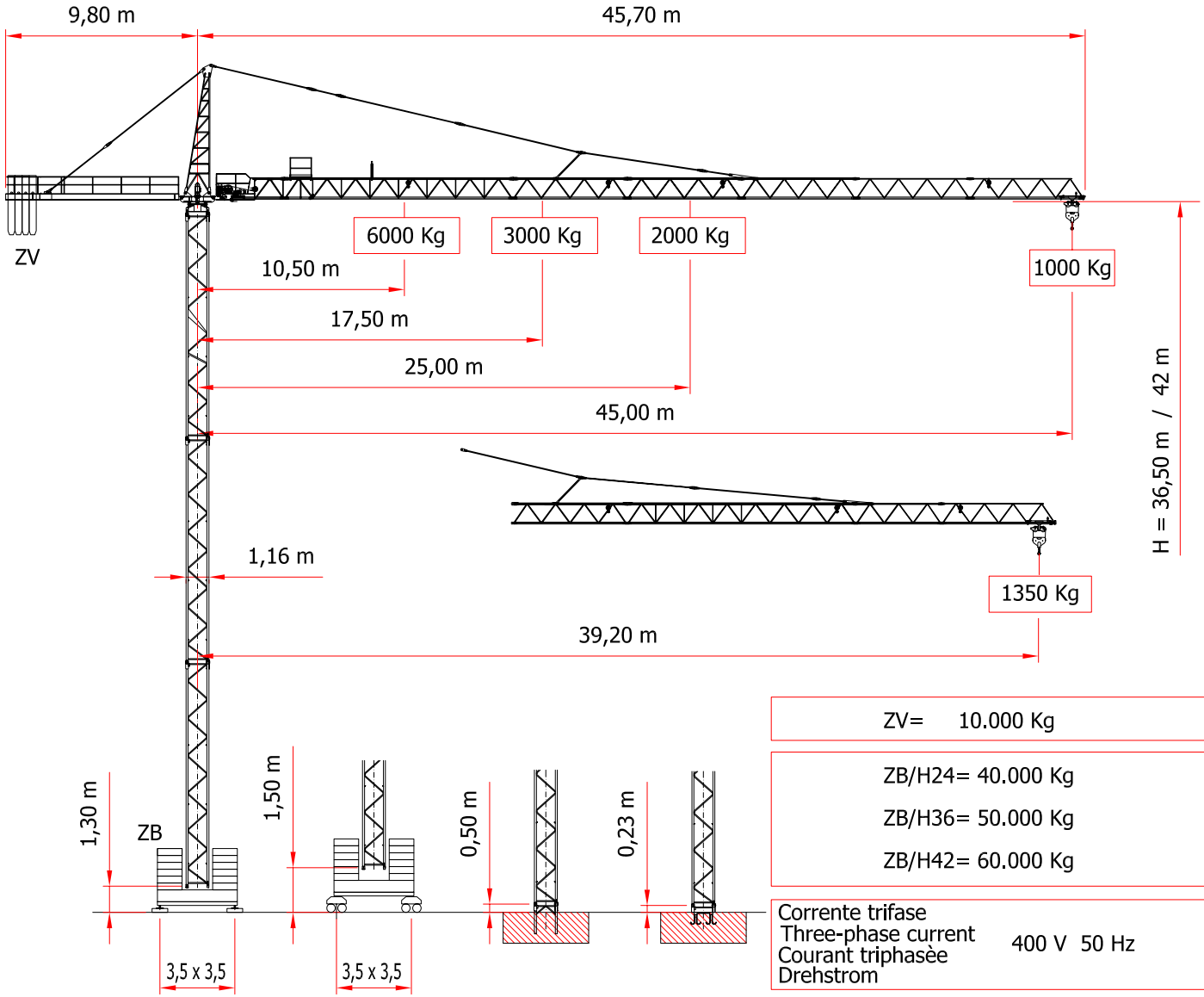


SERIE CB 4510

CITY 45/1000



ZV= 10.000 Kg

ZB/H24= 40.000 Kg

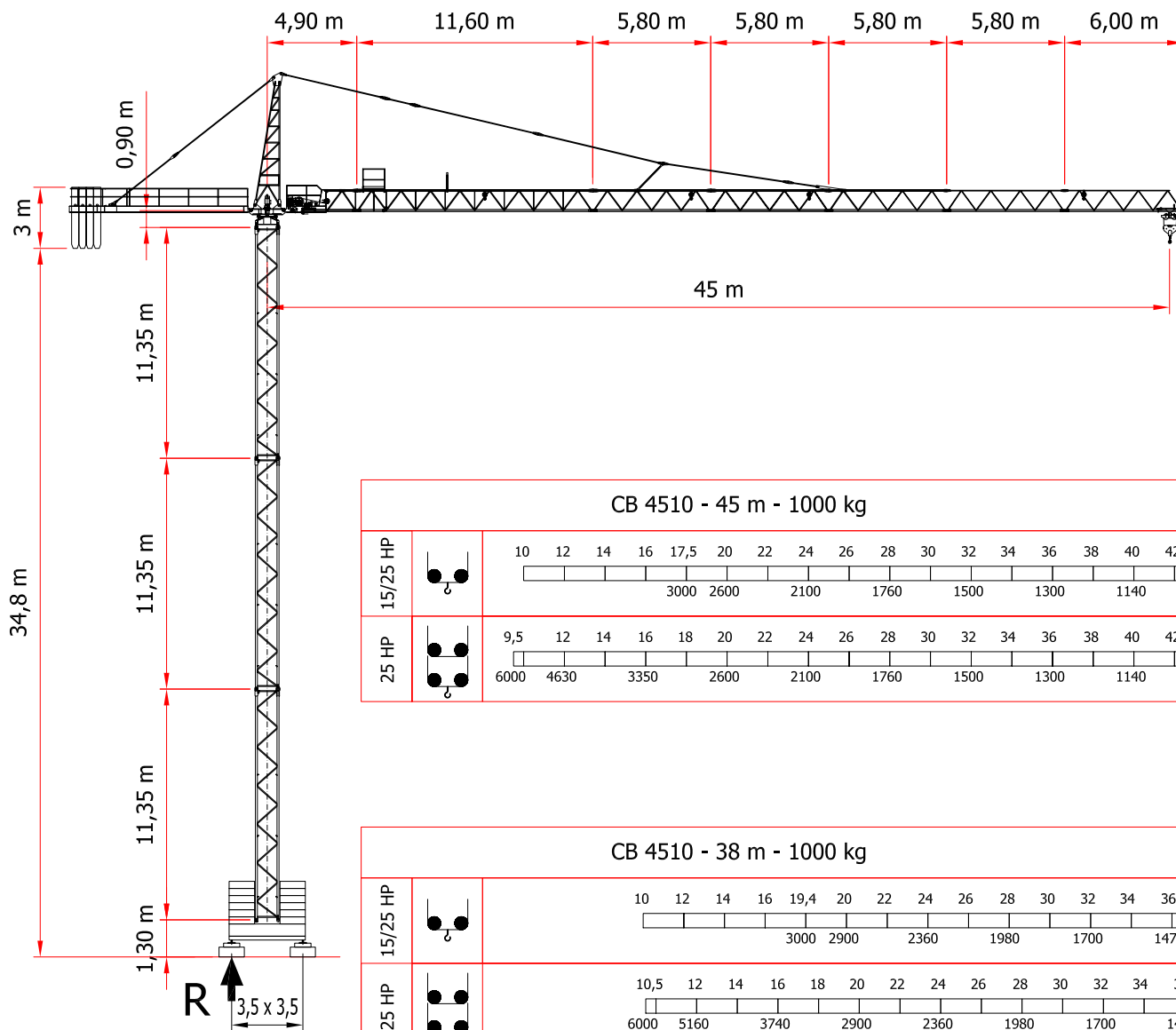
ZB/H36= 50.000 Kg

ZB/H42= 60.000 Kg

Corrente trifase
 Three-phase current
 Courant triphasée
 Drehstrom 400 V 50 Hz

Potenza installata
 Power set up
 Puissance installée
 Kraftbedarf KW 20 (Argano 15 HP)
 KW 28 (Argano 25 HP)

	HP 15				HP 25					30/60 m/1' 2,2/2,2 kW INVERTER
			Kg	m/1'			Kg	m/1'		
			1500	40			1500	60		0:1,1 rpm 60 Nm INVERTER
			3000	20			3000	30		
			3000	5			3000	7		
			-	-			3000	30		
			-	-			6000	15		
			-	-			6000	3,5		
										15 m/1' 2x3 kW INVERTER



CB 4510

REAZIONE

R = 48.000 Kg

REACTION

DIN 15018 H₁ B₂ B₃ DIN 15019

CON RISERVA DI MODIFICHE
 SUBJECT TO MODIFICATION
 RESERVA DE MODIFICACIONES
 MODIFICATIONS RESERVEES
 ANDERUNGEN VORBEHALTEN