

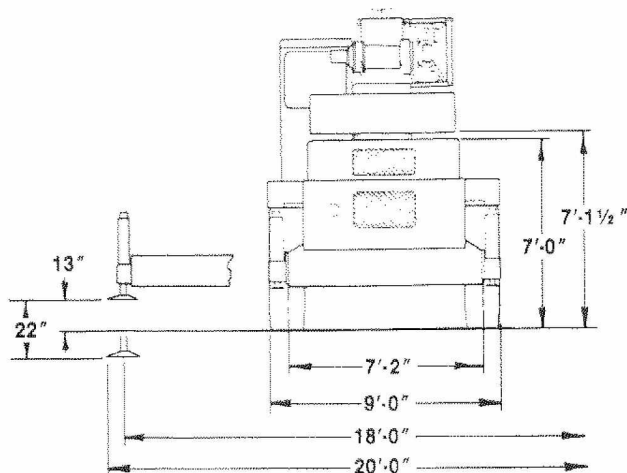
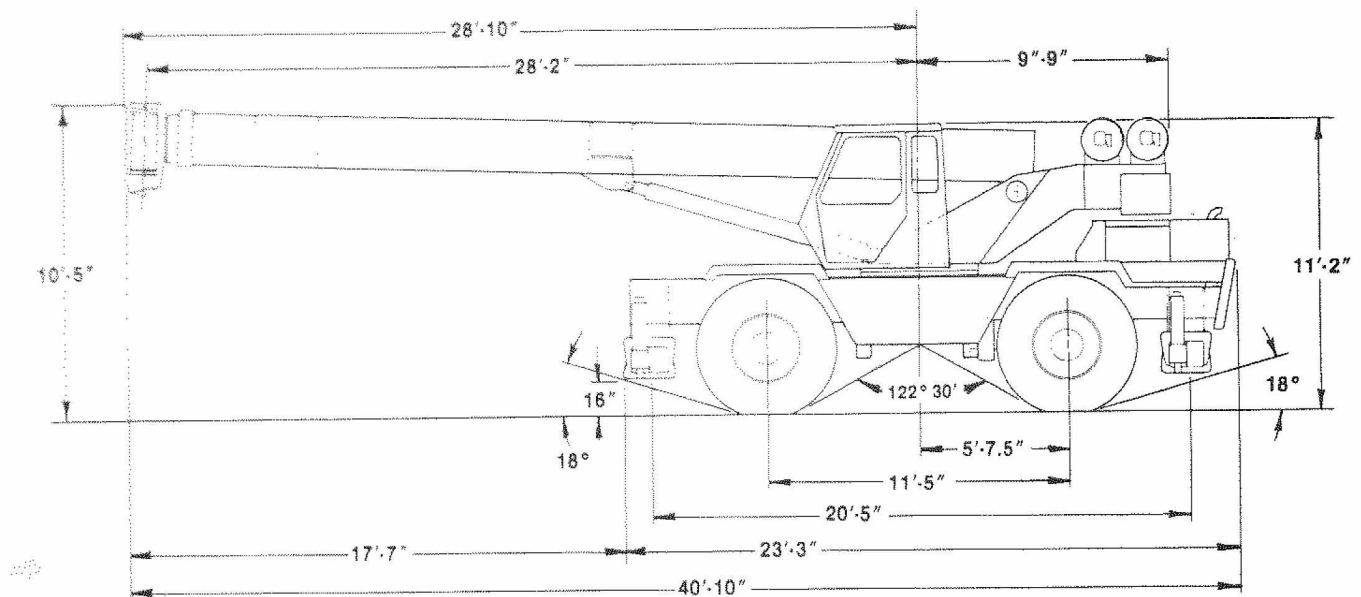
BANTAM®

S-888B

general specifications
hydraulic rough terrain crane — 33 ton capacity

General Dimensions

Note: Dimensions given assume boom is fully retracted in travel position and crane is equipped with standard tires.



Operating Weight

WEIGHT

55,950 lbs with 81' boom, main winch only and 4,300 lb. counterweight.

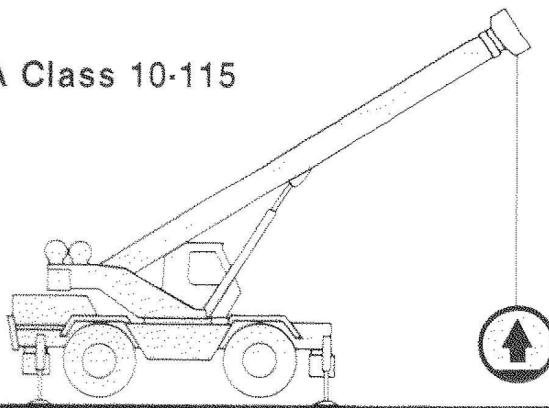
WEIGHT DISTRIBUTION

	Front lbs	Rear lbs	Total lbs
Standard Machine	29,610	26,340	55,950
Add: 32' Jib	+ 1,520	- 620	+ 900
Add: 49' Jib	+ 1,660	- 460	+ 1,200
Add: Auxiliary Winch	- 10	+ 110	+ 100
Add: 23:50 x 25 Tires	+ 210	+ 210	+ 420

Load Ratings

33 Ton Capacity — PCSA Class 10-115

Stability 85%



ON OUTRIGGERS OVER FRONT										CRANE WORKING POSITIONS				
RADIUS	BOOM LENGTH	ANGLE	BOOM LENGTH	ANGLE	BOOM LENGTH	ANGLE	BOOM LENGTH	ANGLE	BOOM LENGTH	RADIUS	OVER FRONT			
FEET	FEET	DEGREES	FEET	DEGREES	FEET	DEGREES	FEET	DEGREES	FEET	FEET				
10	66,000	73°	51,100	75°	36,600	75°	25,000	75°	20,000	10	OVER FRONT			
12	55,000	70°	47,200	72°	34,200	72°	21,500	72°	17,200	12				
15	45,200	65°	43,000	66°	27,000	66°	18,200	66°	14,800	15	OVER FRONT			
20	35,400	58°	32,700	59°	23,400	59°	15,400	59°	12,500	20				
25	26,900	50°	24,900	51°	19,300	51°	13,600	51°	11,250	25	OVER FRONT			
30		41°	18,900	42°	14,700	42°	11,700	42°	9,400	30				
35		30°	14,300	31°	11,500	31°	7,900	31°	7,000	35	OVER FRONT			
40		19°	11,100	20°	7,500	20°	5,150	20°	3,100	40				
50										50	OVER FRONT			
60										60				
70										70	OVER FRONT			
75										75				

ON TIRES ST. OVER FRONT					ON TIRES 360°				
RADIUS	MAX. ANGLE	MIN. ANGLE	ALL BOOM LENGTHS	RADIUS	RADIUS	MAX. ANGLE	MIN. ANGLE	ALL BOOM LENGTHS	RADIUS
10	75°	67°	50,200	10	10	75°	67°	26,900	10
12	75°	63°	41,500	12	12	75°	63°	22,600	12
15	75°	57°	30,700	15	15	75°	57°	14,100	15
20	75°	45°	20,500	20	20	75°	45°	9,750	20
25	75°	29°	14,700	25	25	75°	29°	6,500	25
30	74°	0°	10,500	30	30	74°	0°	4,200	30
35	69°	0°	8,050	35	35	69°	0°	2,850	35
40	61°	0°	6,250	40	40	61°	0°	1,950	40
50	52°	0°	3,950	50					
60	41°	0°	2,550	60					
70	27°	0°	1,600	70					

ON OUTRIGGERS 360°										SIDE STOW JIB				
RADIUS	BOOM LENGTH	ANGLE	BOOM LENGTH	ANGLE	BOOM LENGTH	ANGLE	BOOM LENGTH	ANGLE	BOOM LENGTH	MAX. BOOM & 32' JIB	ANGLE	MAX. BOOM & 49' JIB	RADIUS	
FEET	FEET	DEGREES	FEET	DEGREES	FEET	DEGREES	FEET	DEGREES	FEET	FEET	DEGREES	FEET	FEET	
10	66,000	73°	51,100	75°	36,600	75°	25,000	75°	20,000				10	
12	55,000	70°	47,200	72°	34,200	72°	21,500	72°	17,200				12	
15	45,200	65°	43,000	66°	27,000	66°	18,200	66°	14,800				15	
20	35,400	58°	32,700	59°	23,400	59°	15,400	59°	12,500				20	
25	26,900	50°	24,900	51°	19,300	51°	13,600	51°	11,250				25	
30		41°	18,900	42°	14,700	42°	11,700	42°	9,400				30	
35		30°	14,300	31°	11,500	31°	7,900	31°	7,000				35	
40		19°	11,100	20°	7,500	20°	5,150	20°	3,100				40	
50													50	
60													60	
70													70	
75													75	
85													85	
95													95	
105													105	
115													115	

ON TIRES 360°					ON TIRES 360°				
RADIUS	MAX. ANGLE	MIN. ANGLE	ALL BOOM LENGTHS	RADIUS	RADIUS	MAX. ANGLE	MIN. ANGLE	ALL BOOM LENGTHS	RADIUS
10	75°	67°	26,900	10	10	75°	67°	26,900	10
12	75°	63°	22,600	12	12	75°	63°	22,600	12
15	75°	57°	14,100	15	15	75°	57°	14,100	15
20	75°	45°	9,750	20	20	75°	45°	9,750	20
25	75°	29°	6,500	25	25	75°	29°	6,500	25
30	74°	0°	4,200	30	30	74°	0°	4,200	30
35	69°	0°	2,850	35	35	69°	0°	2,850	35
40	61°	0°	1,950	40	40	61°	0°	1,950	40

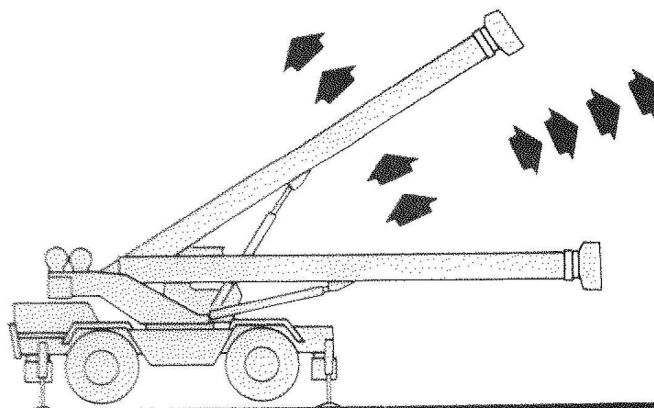
MAXIMUM PERMISSIBLE LOAD IN LBS							
Line Parts	1	2	3	4	5	6	7
Main Hoist	9,500	19,000	28,500	38,000	47,500	57,000	66,000
Aux. Hoist	5,000	10,000	15,000	20,000	25,000	30,000	35,000
Boom Head	2	2-D	2-3	1-2-D	1-2-3	1-2-3-D	1-2-3-4
Hook Block	D	2	2-D	1-2	1-2-D	1-2-3	1-2-3-D

Main Hoist Line - 5/8" Dia. 6x19 IWRC, IPS, Reg. Lay Preformed Wire Rope.
 Minimum Breaking Strength - 17.9 Tons.
 Max. Permissible Line Pull - 10,228 Lbs.
 Aux. Hoist Line - 1/2" Dia. 6x19 IWRC, IPS, Preformed Wire Rope.
 Minimum Breaking Strength - 11.5 Tons.
 Max. Permissible Line Pull - 5,265 Lbs.

- For boom lengths less than maximum with the side stow jib erected, the rated loads are determined by boom angle only in the appropriate jib plus boom column. For boom angles not shown, use the capacity of the next lower boom angle.
- When lifting off main boom head and jib is erected, deduct 1800 lbs. for side stow jib from main boom load chart capacities.

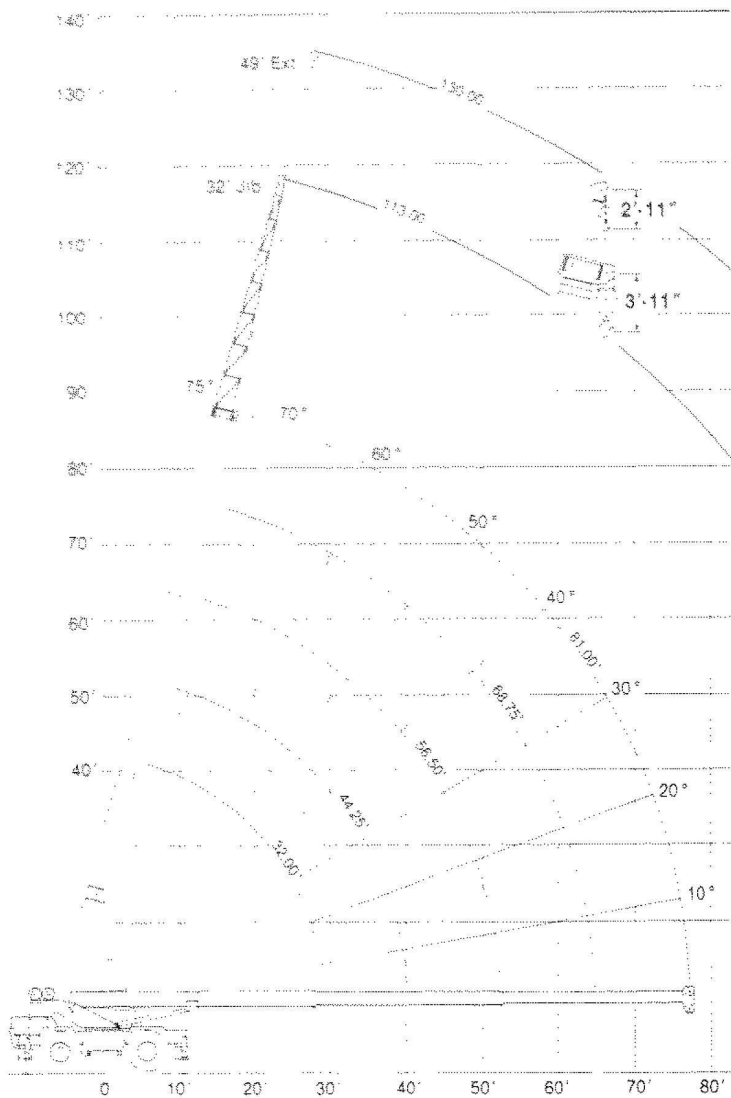
CAUTION
 Without outriggers, never maneuver boom beyond 70' radius over front or 40' radius over side to ensure stability.

Range Diagram



GENERAL AND SPECIFIC CAPACITY CONDITIONS AND LIMITATIONS

1. The rated loads as determined by boom length, radius or boom angle pertain to this crane as originally manufactured and equipped. They are maximum load ratings.
2. Crane load ratings are based on freely suspended loads with the machine leveled and standing on a firm, uniform, supporting surface. Practical working loads require the USER to make due allowances for the particular job conditions dependent upon supporting surface, wind, pendulum action of load, jerking or sudden stopping of loads, hazardous surroundings, experience of personnel, etc. Positioning of, or operation at, radii and boom or jib length beyond the maximum and minimum shown is not intended or approved. For boom lengths not shown, use load ratings of next longer boom. **SIDE PULL ON BOOM IS EXTREMELY DANGEROUS.**
3. Weight of hooks, hook blocks, slings and all other load handling devices, except hoist rope, shall be included as part of the load.
4. Chart ratings shown above the bold line or as specified are based on the machine's structural strength and not on the machine's stability. All other ratings are based on stability and do not exceed the specified percentage of tipping load.
5. **CRANE LOAD RATINGS ON OUTRIGGERS ARE BASED ON OUTRIGGERS ALL BEING FULLY EXTENDED AND SET ON A FIRM SUPPORTING SURFACE TO PROVIDE FOR A LEVEL MACHINE.**
6. This crane and rated loads shown are in accordance with standards of Power Crane And Shovel Association Standard No. 2 and SAE Crane Load Stability Test Code J-765.
7. The operator and other personnel should read and fully understand the Operator's Manual furnished by the manufacturer before operating this machine and rules for safe operation of equipment should be adhered to at all times. Operators and supervisors must fully understand safety standards for mobile hydraulic cranes ANSI B30.15 and be familiar with Federal, State and Local Safety Regulations.
8. The maximum load which may be telescoped is limited by boom angle, hydraulic pressure, boom lubrication, etc. When extending boom with load, do not exceed load rating at longest boom length required.
9. For clamshell, magnet, or concrete bucket operation, weight of bucket or magnet and load must not exceed 90% of load rating chart capacities.





27-1/2 TON CAPACITY (25 METRIC TON CAPACITY)

Lift Capacity

RECOMMENDED TIRE PRESSURE (PSI)			
WORK CONDITION	18x25-20 PR	23.5x25-20 PR	26.5x25-20 PR
LIFT, ON TIRES	85	70	60
LOADING*	60	50	45
*For improved tire wear, do not lift "On Tires" with these inflation pressures			

CAUTION

Without outriggers, never maneuver boom beyond 70' radius over front or 40' radius over side to ensure stability.

ON TIRES ST. OVER FRONT				
R A D I U S	MAX. A N G L E	MIN. A N G L E	ALL BOOM LENGTHS	R A D I U S
10	75°	67°	50,200	10
12	75°	63°	41,500	12
15	75°	57°	30,700	15
20	75°	45°	20,500	20
25	75°	29°	14,700	25
30	74°	0°	10,500	30
35	69°	0°	8,050	35
40	61°	0°	6,250	40
50	52°	0°	3,950	50
60	41°	0°	2,550	60
70	27°	0°	1,600	70

ON TIRES 360°				
R A D I U S	MAX. A N G L E	MIN. A N G L E	ALL BOOM LENGTHS	R A D I U S
10	75°	67°	26,900	10
12	75°	63°	22,600	12
15	75°	57°	14,100	15
20	75°	45°	9,750	20
25	75°	29°	6,500	25
30	74°	0°	4,200	30
35	69°	0°	2,850	35
40	61°	0°	1,950	40



Operating Weights (Approximate)

WEIGHT: 55,060 lbs. (24,975 kg) with 81 ft. (24.7 m) boom and 4,300 lb. (1950 kg) counterweight.

Weight Distribution	Front	Rear	Total
Standard Machine	29,800 lbs. (13,517 kg)	25,260 lbs. (11,458 kg)	55,060 lbs. (24,975 kg)
32 ft. (9.8 m) jib	add 1,775 lbs. (805 kg)	sub 725 lbs. (329 kg)	add 1,050 lbs. (476 kg)
49 ft. (14.9 m) jib	add 1,936 lbs. (878 kg)	sub 536 lbs. (243 kg)	add 1,400 lbs. (635 kg)
Auxiliary Winch	add 83 lbs. (38 kg)	add 117 lbs. (53 kg)	add 200 lbs. (91 kg)
23.50 X 25 Tires	add 210 lbs. (95 kg)	add 210 lbs. (95 kg)	add 420 lbs. (190 kg)