

# BAILLEY

## SPECIALTY CRANES & AERIALS



**HOIST TRUCK**



**FORKLIFT**



**MAN BASKET**

## **THE BRANDON OMNI™**

**EXCEPTIONAL CONTROL WITH  
OMNI-DIRECTIONAL STEERING**

**Hoist Capacity:** 4000 lbs

**Fork Capacity:** 2500 lbs.

**Glazier Capacity:** 1100 lbs.

**Jib or Panel Capacity:** 1000 lbs

**Winch Capacity:** 3000 lbs

**Power:** 36Volt 7HP Electric Motor.

**Boom:** Base unit, 2 telescoping booms and one manual pull-out boom. Attachments replace pull-out boom.

**Steering:** 2 Omni Directional Wheels

**Drive:** 2 Wheel Drive and Braking

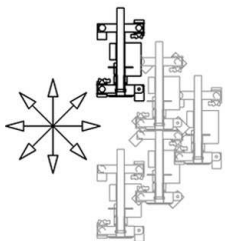
**Weight:** 5800 Lbs + Attachment

**Rated Load Limiter:** Displays rated load and actual load. Stops when overload is reached. Detects attachment and adjusts load parameters.

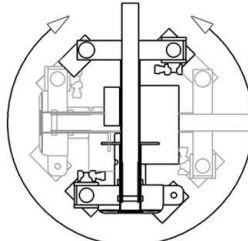
**Charger:** On-board 110V

**System Display:** Includes Rated Load Limiter and system information.

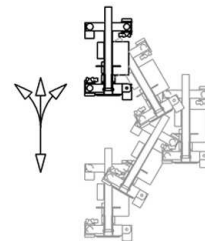
**Operation:** Includes wireless belly pack transmitter



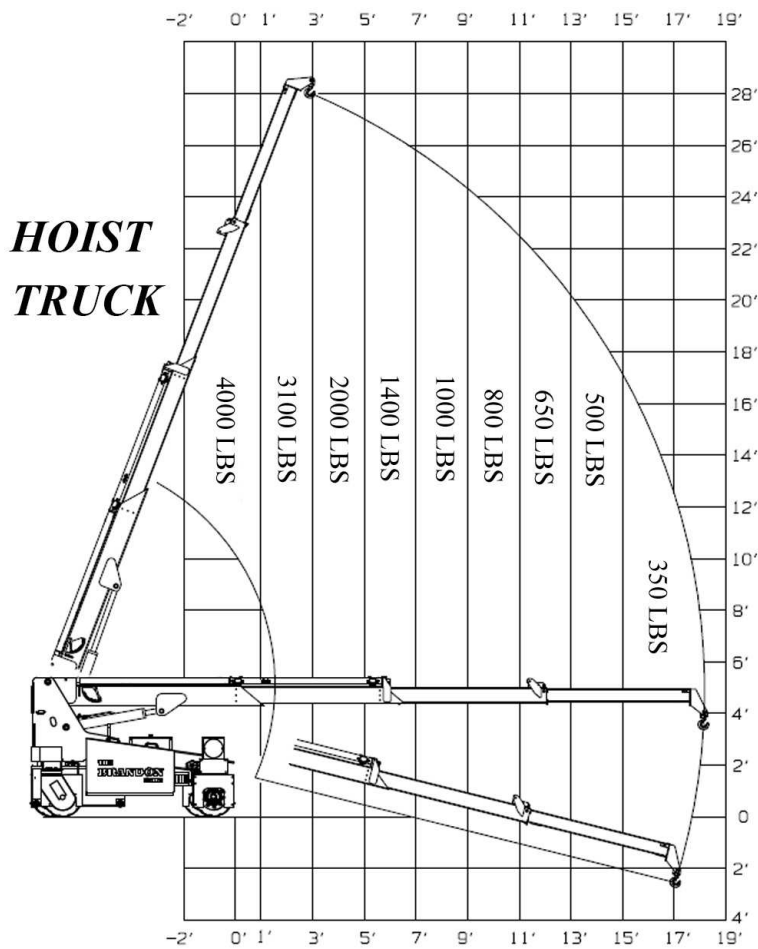
**OMNI Drive**  
allows the machine  
to maintain its  
orientation while  
maneuvering



**Crab**  
allows the machine  
to rotate about its  
center for tight  
turning

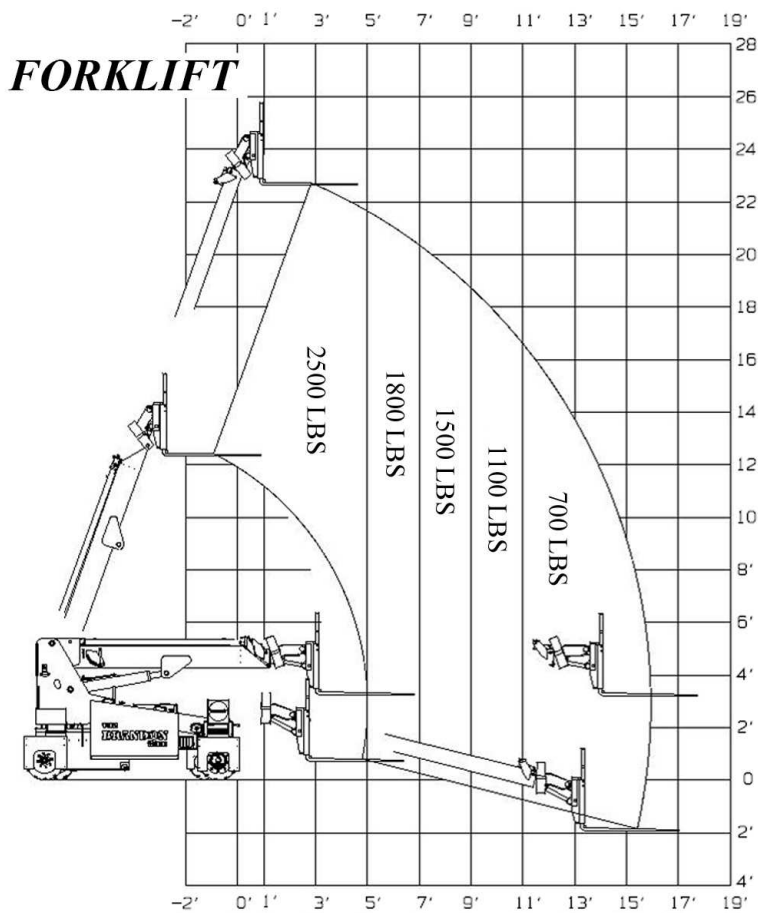
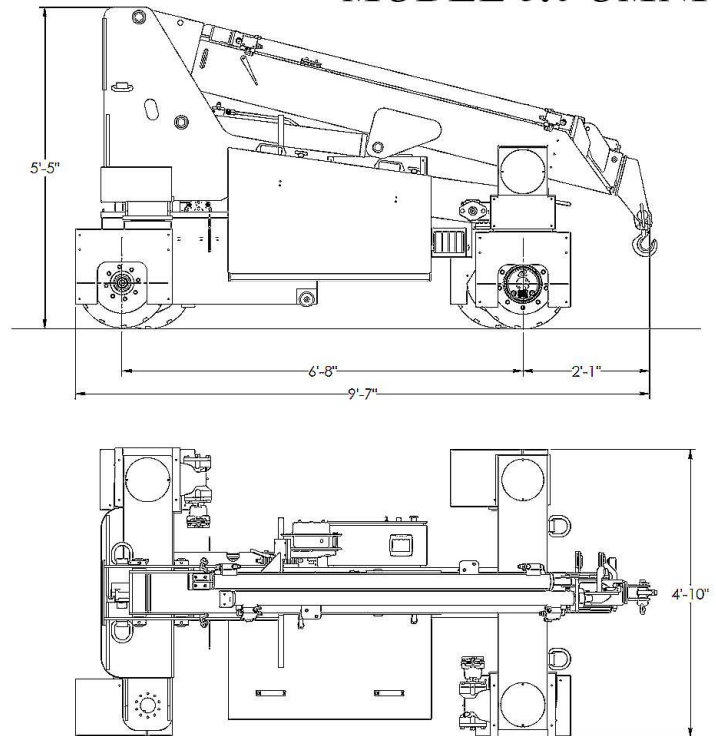


**Standard Drive**  
allows the machine  
to function like an  
automobile

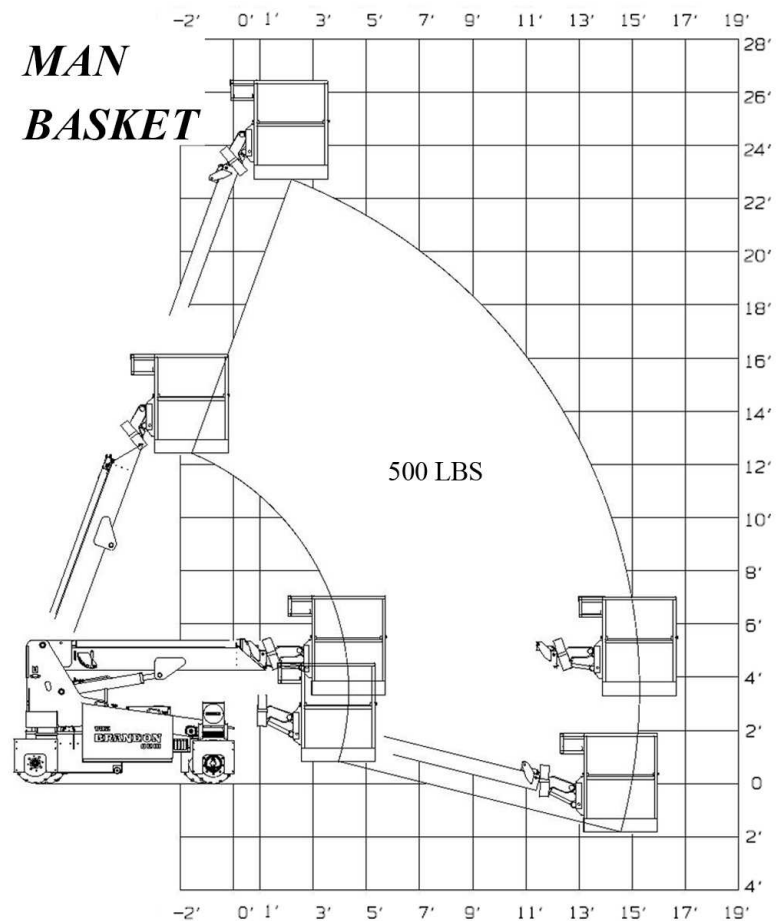


## COMPACT DESIGN

### MODEL 5.0 OMNI



### MAN BASKET



**\*\*MULTIPLE PATENTS PENDING\*\***