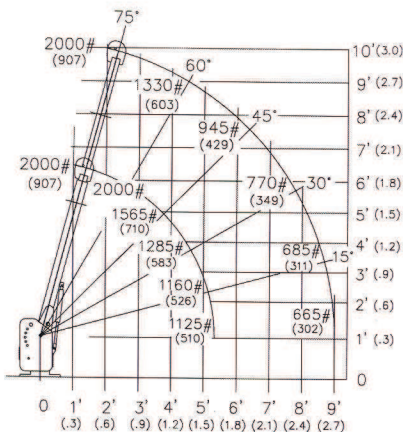


# Auto Crane's 2003 Series

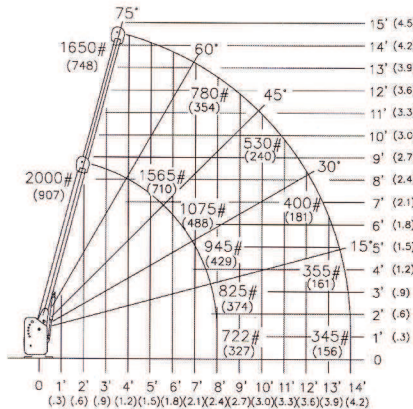
## New Electric 6,000 ft. lb. Crane



The 2003 Series electric crane has 6000 ft. lbs. of lifting capacity. The 2003 Series is designed for safe, fast, single-person operation. It is powered by your truck's standard 12 volt battery. The 2003 Series crane is designed for mounting on standard pickups, flatbeds, or conventional service bodies. Typical applications include meter and pump handling, water and sewer maintenance, general loading and unloading, lifting drums and engines, plus many more.



2003 Series 9'



2003 Series 14'

For the name of your nearest Auto Crane distributor, call TOLL FREE 1-800-283-9740.



### AUTO CRANE COMPANY

P.O. Box 580697 • Tulsa, OK 74158-0697 • U.S.A.

Phone: (918) 836-0463 • Fax: (918) 834-5979

<http://www.autocrane.com>

### Features Include:

- 2,000 lbs. (907 kgs) capacity
- Crane rating of 6,000 ft. lbs. (.8 tm); maximum lifting capacity of 2,000 lbs. (907 kgs) at 3 ft. (.9 m)
- Manual boom extends from 5' (1.5 m) to 9 ft. (2.7 m); optional manual boom extends from 8 ft. (2.4 m) to 14 ft. (4.2 m)
- 360° continuous manual rotation with manual brake
- 22 ft. (6.71 m) of high current battery cable
- Optional automatic overload protection system
- 15 ft. (4.5 m) removable remote control pendant
- 12 volt DC, series wound, hoist motor
- Sherwin Williams Genesis™ (Auto Crane White)

### SPECIFICATIONS:

**Weight:** 385 lbs. (175 kgs) for 9' boom;

440 lbs. (200 kgs) for 14' boom

**Length:** 6' 2" (1.88 m) for 9' boom;

8' 11" (2.72 m) for 14' boom

**Width:** 1' 7" (.48 m)

**Height:** 1' 9" (.53 m)

**Base Plate Dimensions:** 1' 4" x 1' 6" (.41 m x .45 m)

**Cable Specs:** 50 ft. (15.2 m) 1/4" (6 mm) aircraft quality cable, 7,000 lbs. (3,175 kgs) single line breaking strength

**Battery Information:** 625 cold cranking rating, 130 minute reserve capacity maintenance type battery required for 12 volt operation; 70 amp minimum truck alternator required

**Chassis Requirements:** 8,000 lbs. (3,628 kgs) GVWR minimum