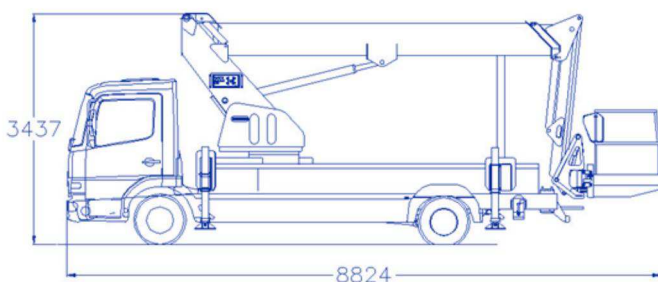
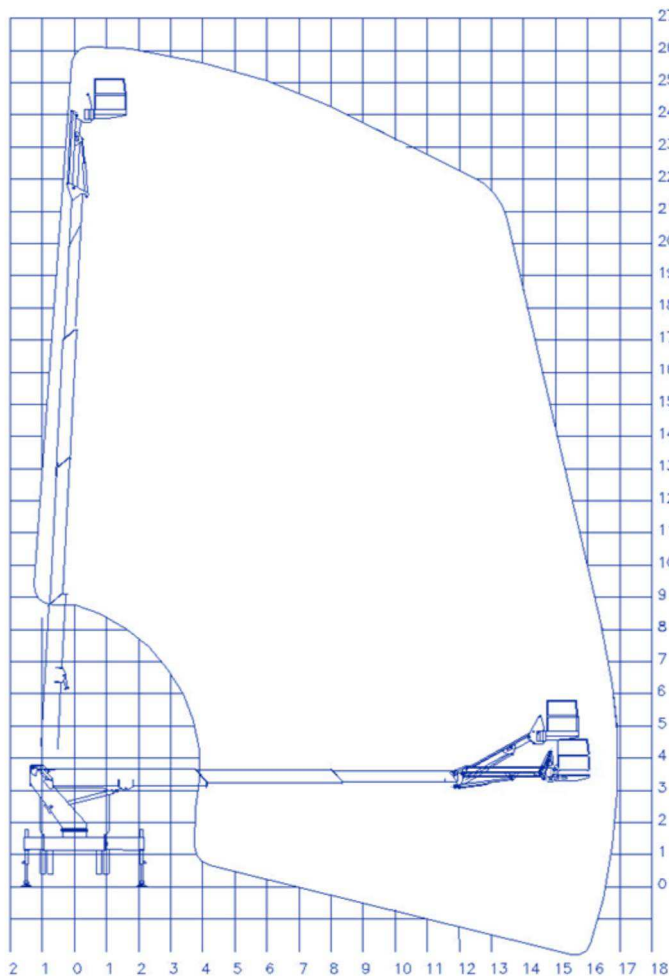


26m working height telescopic boom with jib on 7.5t+ GVW chassis cab



Tel : 0191 487 9933 sales@ascendantaccess.com

26m working height telescopic boom with jib on 7.5t+ GVW chassis cab



OPTIONS

- Amber beacons on cab roof
- Work lights at platform
- Hi-viz warning chevrons to vehicle and/or platform
- 110v power cable chassis to cage
- Reverse alarm with night-silent facility
- Polyethylene walk-in enclosed cage
- Sign carrier facility on cage

KEY SPECIFICATIONS

Maximum working height	26.0m
Horizontal reach (fully jacked).....	17.0m
Horizontal reach narrow jacked	10.0m
SWL in platform (3 person)	280kg
Platform size (1.1m high)	1.0 x 1.8 m
Turret rotation	360 deg.
Minimum vehicle GVW	7500kg
Typical wheelbase	4400mm
Stabiliser spread (full).....	4.3m
Spread in 1-side jacking mode.....	3.2m
Spread in narrow jack mode.....	2.2m
Power source.....	PTO on vehicle
Kerb weight (no crew) approx.	7300kg

STANDARD FEATURES

- Direct hydraulic proportional controls at cage and base
- 160 degree powered cage rotation
- Four H-section stabilisers with one-sided- and narrow jacking facility for confined areas
- Four section all steel telescopic boom
- 2.4m long jib with 125 degree working arc
- Structural quality tubular aluminium cage
- DC auxiliary power pack and emergency lowering handpump to lower the machine if engine fails
- Safety interlocks and warning lights for booms, stabilisers and PTO and emergency powerpack functions
- Warning lights and manual over-ride for 'light leg' and 'cab protection' situations

TYPICAL VEHICLES

- Iveco 75E16 4455mm wheelbase chassis cab
- DAF LF150FA 4300mm wheelbase chassis cab