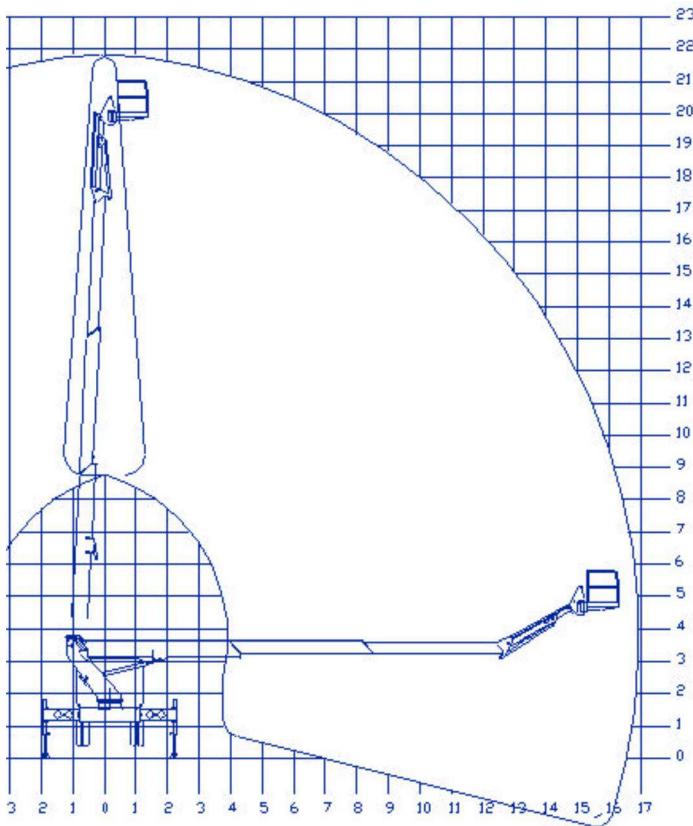


22m working height telescopic boom with jib on 7.5t+ GVW chassis cab



Tel : 0191 487 9933 sales@ascendantaccess.com

22m working height telescopic boom with jib on 7.5t+ GVW chassis cab



KEY SPECIFICATIONS

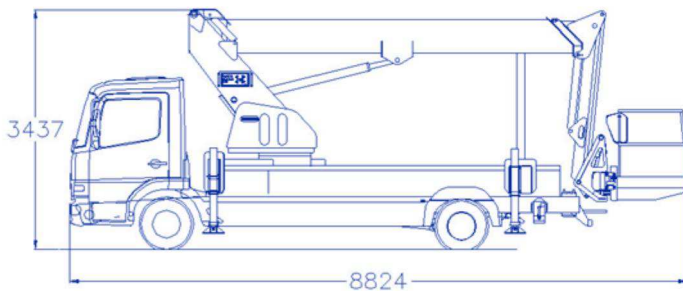
Maximum working height	22.0m
Horizontal reach (fully jacked).....	17.0m
Horizontal reach narrow jacked	10.0m
SWL in platform (3 person)	280kg
Platform size (1.1m high)	1.2 x 1.8 m
Turret rotation	360 deg.
Minimum vehicle GVW	7500kg
Typical wheelbase	4400mm
Stabiliser spread (full).....	4.3m
Spread in 1-side jacking mode.....	3.2m
Spread in narrow jack mode.....	2.2m
Power source.....	PTO on vehicle
Kerb weight (no crew) approx.	7200kg

STANDARD FEATURES

- Direct hydraulic proportional controls at cage and base
- 160 degree powered cage rotation
- Four H-section stabilisers with one-sided- and narrow jacking facility for confined areas
- Three section all steel telescopic boom
- 2.4m long jib with 125 degree working arc
- Structural quality tubular aluminium cage
- DC auxiliary power pack and emergency lowering handpump to lower the machine if engine fails
- Safety interlocks and warning lights for booms, stabilisers and PTO and emergency powerpack functions
- Warning lights and manual over-ride for 'light leg' and 'cab protection' situations

TYPICAL VEHICLES

- Iveco 75E16 4455mm wheelbase chassis cab
- DAF LF150FA 4300mm wheelbase chassis cab



OPTIONS

- Amber beacons on cab roof
- Work lights at platform
- Hi-viz warning chevrons to vehicle and/or platform
- 110v power cable chassis to cage
- Reverse alarm with night-silent facility
- Polyethylene walk-in enclosed cage
- Sign carrier facility on cage