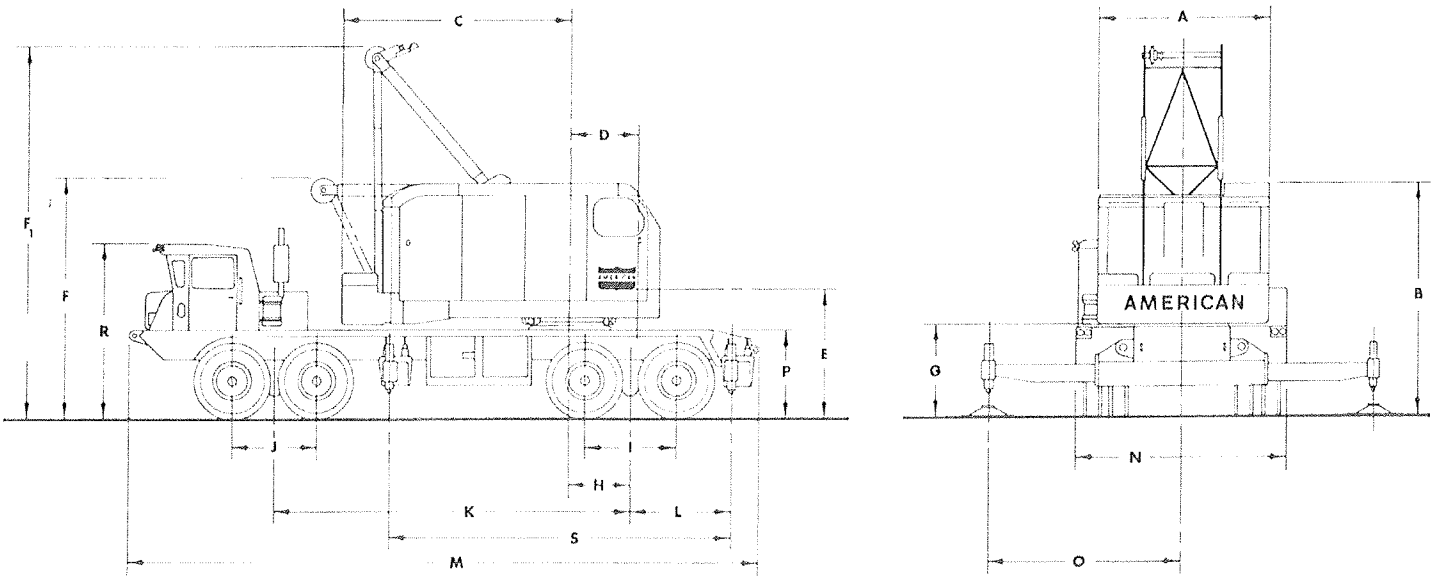


# 7460 CARRIER SPECIFICATIONS

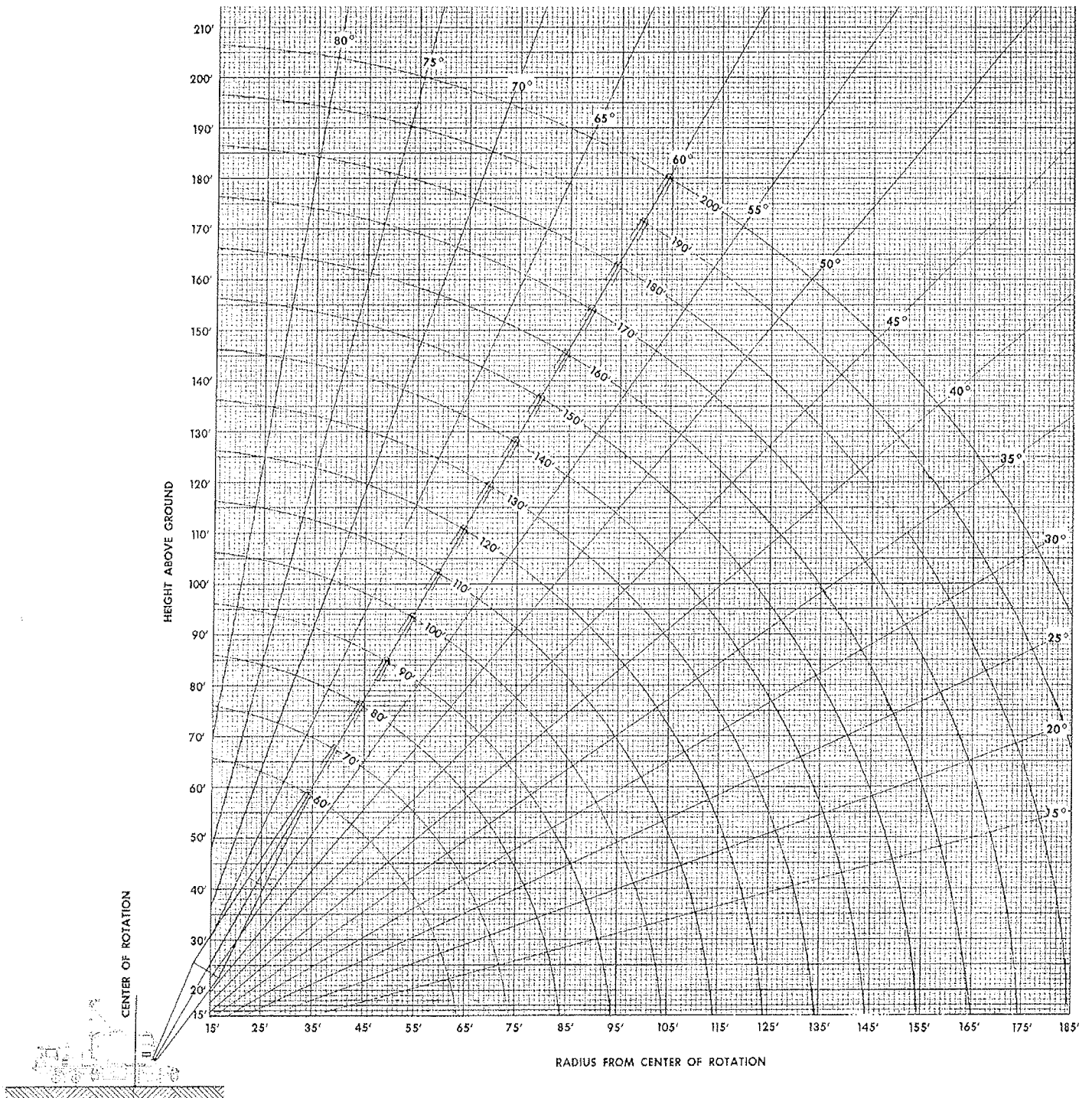


## GENERAL DIMENSIONS

- |    |  |            |    |   |                    |
|----|--|------------|----|---|--------------------|
| A. | Width of cab . . . . .                                       | 10' 6"     | K. | Centerline of rear bogie to centerline of front bogie . . . . .         | 18' 9"             |
| B. | Height to top of cab . . . . .                               | 12' 9"     | L. | Centerline of rear bogie to centerline of rear outrigger . . . . .      | 5' 8 1/2"          |
| C. | Tail Swing . . . . .   | 14' 5 1/2" | M. | Overall length . . . . .  | 32' 10 1/2" 4 1/2" |
| C' | Tail Swing with A-Frame retracted . . . . .                  | 16' 9 1/2" | N. | Overall width . . . . .   | 11' 0"             |
| D. | Centerline of rotation to centerline of boom foot . . . . .  | 4' 1 1/2"  | O. | Outriggers extended . . . . .   | 10' 0"             |
| E. | Ground to centerline boom foot . . . . .                     | 6' 6"      | P. | Height over mounting plate . . . . .                                    | 4' 5 1/2"          |
| F. | Height over A-Frame (lowered) . . . . .                      | 13' 1 1/2" | R. | Height over carrier cab . . . . .                                       | 9' 0"              |
| F' | Height over A-Frame (raised) . . . . .                       | 21' 6"     | S. | Centerline of rear outrigger to centerline of front outrigger . . . . . | 18' 8 1/2"         |
|    | Ground to bottom of counterweight . . . . .                  | 4' 11 1/2" |    | Turning radius . . . . .  | 56' 0"             |
| H. | Centerline of rotation to centerline of rear bogie . . . . . | 3' 10"     |    | Clearance (under rear equalizing beam) . . . . .                        | 10 3/4"            |
| I. | Distance between rear axles . . . . .                        | 4' 10"     |    | Clearance (under rear differential) . . . . .                           | 12 1/2"            |
| J. | Distance between front axles . . . . .                       | 4' 6"      | T. | Distance from Front Bogie to Front Bumper . . . . .                     | 8' 1"              |

FORM NO. 7460-TCC-5

# BOOM ANGLE DIAGRAM



## AMERICAN MODEL 7460 TRUCK CRANE WORKING RANGES

**AMERICAN**<sup>®</sup>



**700 SERIES  
MODEL 7460  
TRUCK CRANE**

**LIFT RATINGS**

With 59S Tubular Chord Hammerhead Boom and "L-L" Counterweight (24,800 Lbs.)

| Boom Lgth | Radius In Feet | Boom Angle Degrees | Free Over Side | Free Over Rear | Outriggers Set |           | Foot From Boom Point | Min. Load Line |
|-----------|----------------|--------------------|----------------|----------------|----------------|-----------|----------------------|----------------|
|           |                |                    |                |                | Over Side      | Over Rear |                      |                |
| 40 feet   | 11             | 82.8               | --             | 103180         | 180000         | 180000    | 47                   | 8              |
|           | 12             | 81.3               | --             | 99190          | 180000         | 180000    | 47                   | 8              |
|           | 15             | 77.0               | --             | 83370          | 180000         | 180000    | 46                   | 8              |
|           | 20             | 69.6               | 39970          | 56530          | 137290         | 137290    | 45                   | 6              |
|           | 25             | 61.7               | 32380          | 42340          | 91840          | 95080     | 42                   | 4              |
|           | 30             | 53.1               | 26990          | 33560          | 67980          | 71160     | 39                   | 3              |
|           | 35             | 43.3               | 22960          | 27570          | 53630          | 56540     | 35                   | 3              |
| 40        | 30.9           | 19540              | 23200          | 44040          | 46660          | 27        | 2                    |                |
| 50 feet   | 13             | 81.9               | --             | 95160          | 180000         | 180000    | 57                   | 8              |
|           | 15             | 79.6               | --             | 83460          | 180000         | 180000    | 56                   | 8              |
|           | 20             | 73.8               | 39820          | 56570          | 137290         | 137290    | 55                   | 6              |
|           | 25             | 67.7               | 32250          | 42370          | 92070          | 95280     | 54                   | 4              |
|           | 30             | 61.3               | 26880          | 33580          | 68140          | 71300     | 51                   | 3              |
|           | 35             | 54.5               | 22870          | 27590          | 53770          | 56660     | 48                   | 3              |
|           | 40             | 47.0               | 19580          | 23240          | 44170          | 46790     | 44                   | 2              |
| 50        | 27.4           | 14420              | 17320          | 32120          | 34270          | 30        | 2                    |                |
| 60 feet   | 14             | 82.3               |                | 91360          | 180000         | 180000    | 67                   | 8              |
|           | 15             | 81.3               | 51070          | 83460          | 180000         | 180000    | 67                   | 8              |
|           | 20             | 76.5               | 39600          | 56540          | 137210         | 137210    | 66                   | 6              |
|           | 25             | 71.6               | 32050          | 42320          | 92190          | 95380     | 64                   | 4              |
|           | 30             | 66.5               | 26700          | 33520          | 68210          | 71360     | 62                   | 3              |
|           | 35             | 61.1               | 22700          | 27530          | 53810          | 56700     | 60                   | 3              |
|           | 40             | 55.5               | 19530          | 23190          | 44200          | 46810     | 57                   | 2              |
|           | 50             | 42.6               | 14400          | 17300          | 32150          | 34300     | 48                   | 2              |
| 60        | 24.8           | 11050              | 13450          | 24870          | 26690          | 32        | 2                    |                |
| 70 feet   | 15             | 82.6               | 50800          | 83420          | 180000         | 180000    | 77                   | 8              |
|           | 20             | 78.5               | 39350          | 56460          | 137080         | 137080    | 76                   | 6              |
|           | 25             | 74.3               | 31810          | 42230          | 92250          | 95420     | 75                   | 4              |
|           | 30             | 70.0               | 26470          | 33420          | 68230          | 71360     | 73                   | 3              |
|           | 35             | 65.6               | 22490          | 27430          | 53800          | 56670     | 71                   | 3              |
|           | 40             | 61.0               | 19400          | 23090          | 44170          | 46770     | 68                   | 2              |
|           | 50             | 51.0               | 14300          | 17200          | 32120          | 34260     | 62                   | 2              |
|           | 60             | 39.3               | 10980          | 13380          | 24850          | 26660     | 51                   | 2              |
| 70        | 22.9           | 8630               | 10680          | 19960          | 21520          | 34        | 1                    |                |
| 80 feet   | 16             | 82.8               | 47840          | 76220          | 160300         | 160300    | 87                   | 7              |
|           | 20             | 79.9               | 39140          | 56400          | 136980         | 136980    | 86                   | 6              |
|           | 25             | 76.3               | 31610          | 42150          | 92300          | 95450     | 85                   | 4              |
|           | 30             | 72.6               | 26280          | 33330          | 68230          | 71350     | 84                   | 3              |
|           | 35             | 68.8               | 22300          | 27340          | 53780          | 56640     | 82                   | 3              |
|           | 40             | 64.9               | 19220          | 22990          | 44140          | 46730     | 80                   | 2              |
|           | 50             | 56.6               | 14210          | 17110          | 32070          | 34210     | 74                   | 2              |
|           | 60             | 47.5               | 10900          | 13300          | 24800          | 26610     | 66                   | 2              |
|           | 70             | 36.6               | 8570           | 10620          | 19940          | 21490     | 55                   | 1              |
| 80        | 21.3           | 6830               | 8610           | 16420          | 17790          | 36        | 1                    |                |
| 90 feet   | 17             | 83.0               | 45070          | 70050          | 145850         | 145850    | 97                   | 6              |
|           | 20             | 81.0               | 38860          | 56290          | 136810         | 136810    | 96                   | 6              |
|           | 25             | 77.8               | 31340          | 42020          | 92320          | 95450     | 95                   | 4              |
|           | 30             | 74.5               | 26020          | 33190          | 68200          | 71300     | 94                   | 3              |
|           | 35             | 71.2               | 22050          | 27190          | 53720          | 56570     | 92                   | 3              |
|           | 40             | 67.8               | 18970          | 22840          | 44060          | 46640     | 91                   | 2              |
|           | 50             | 60.7               | 14070          | 16960          | 31970          | 34100     | 86                   | 2              |
|           | 60             | 53.1               | 10760          | 13160          | 24700          | 26500     | 79                   | 2              |

| Boom Lgth     | Radius In Feet | Boom Angle Degrees | Free Over Side | Free Over Rear | Outriggers Set |           | Foot From Boom Point | Min. Load Line |
|---------------|----------------|--------------------|----------------|----------------|----------------|-----------|----------------------|----------------|
|               |                |                    |                |                | Over Side      | Over Rear |                      |                |
| 90 feet cont. | 70             | 44.6               | 8440           | 10490          | 19830          | 21390     | 70                   | 1              |
|               | 80             | 34.4               | 6710           | 8500           | 16340          | 17700     | 58                   | 1              |
|               | 90             | 20.0               | 5360           | 6940           | 13690          | 14900     | 38                   | 1              |
| 100 feet      | 19             | 82.5               | 40460          | 60150          | 126840         | 126840    | 106                  | 5              |
|               | 20             | 81.9               | 38570          | 56170          | 126100         | 126100    | 106                  | 5              |
|               | 25             | 79.0               | 31060          | 41870          | 92310          | 95430     | 105                  | 4              |
|               | 30             | 76.1               | 25740          | 33040          | 68150          | 71240     | 104                  | 3              |
|               | 35             | 73.2               | 21780          | 27030          | 53640          | 56480     | 103                  | 3              |
|               | 40             | 70.1               | 18710          | 22680          | 43960          | 46540     | 101                  | 2              |
|               | 50             | 63.9               | 13910          | 16800          | 31850          | 33980     | 97                   | 2              |
|               | 60             | 57.3               | 10600          | 13000          | 24570          | 26370     | 91                   | 2              |
|               | 70             | 50.2               | 8280           | 10330          | 19710          | 21260     | 84                   | 1              |
|               | 80             | 42.1               | 6560           | 8350           | 16220          | 17580     | 74                   | 1              |
| 90            | 32.5           | 5230               | 6810           | 13580          | 14790          | 61        | 1                    |                |
| 100           | 18.9           | 4150               | 5570           | 11500          | 12600          | 39        | 1                    |                |
| 110 feet      | 20             | 82.7               | 38270          | 56040          | 114480         | 114480    | 116                  | 5              |
|               | 25             | 80.0               | 30770          | 41730          | 92300          | 95390     | 116                  | 4              |
|               | 30             | 77.4               | 25460          | 32880          | 68090          | 71160     | 115                  | 3              |
|               | 35             | 74.7               | 21500          | 26870          | 53550          | 56380     | 113                  | 3              |
|               | 40             | 72.0               | 18430          | 22510          | 43860          | 46420     | 112                  | 2              |
|               | 50             | 66.4               | 13730          | 16620          | 31730          | 33850     | 108                  | 2              |
|               | 60             | 60.6               | 10430          | 12820          | 24440          | 26230     | 103                  | 2              |
|               | 70             | 54.4               | 8110           | 10160          | 19560          | 21110     | 97                   | 1              |
|               | 80             | 47.7               | 6400           | 8180           | 16070          | 17430     | 88                   | 1              |
|               | 90             | 40.1               | 5070           | 6650           | 13440          | 14650     | 78                   | 1              |
|               | 100            | 31.0               | 4010           | 5430           | 11380          | 12370     | 64                   | 1              |
| 110           | 18.0           | 3120               | 4410           | 9710           | 10700          | 41        | 1                    |                |
| 120 feet      | 21             | 82.8               | 36290          | 52390          | 99590          | 99590     | 126                  | 4              |
|               | 25             | 80.9               | 30530          | 41600          | 92290          | 95360     | 126                  | 4              |
|               | 30             | 78.5               | 25220          | 32740          | 68030          | 71090     | 125                  | 3              |
|               | 35             | 76.0               | 21260          | 26720          | 53470          | 56290     | 124                  | 3              |
|               | 40             | 73.5               | 18200          | 22360          | 43760          | 46320     | 122                  | 2              |
|               | 50             | 68.5               | 13580          | 16470          | 31610          | 33720     | 119                  | 2              |
|               | 60             | 63.3               | 10270          | 12660          | 24310          | 26100     | 114                  | 2              |
|               | 70             | 57.8               | 7960           | 10000          | 19430          | 20970     | 109                  | 1              |
|               | 80             | 51.9               | 6240           | 8030           | 15940          | 17290     | 102                  | 1              |
|               | 90             | 45.5               | 4920           | 6500           | 13310          | 14520     | 93                   | 1              |
|               | 100            | 38.3               | 3870           | 5290           | 11250          | 12340     | 81                   | 1              |
|               | 110            | 29.6               | 3000           | 4290           | 9600           | 10590     | 66                   | 1              |
| 120           | 17.2           | 2260               | 3440           | 8220           | 9130           | 42        | 1                    |                |
| 130 feet      | 22             | 82.9               | 34380          | 49110          | 86010          | 86010     | 136                  | 4              |
|               | 25             | 81.6               | 30230          | 41440          | 86010          | 86010     | 136                  | 4              |
|               | 30             | 79.4               | 24930          | 32570          | 67960          | 71010     | 135                  | 3              |
|               | 35             | 77.1               | 20980          | 26550          | 53370          | 56180     | 134                  | 3              |
|               | 40             | 74.8               | 17920          | 22180          | 43640          | 46190     | 133                  | 2              |
|               | 50             | 70.2               | 13400          | 16280          | 31470          | 33580     | 130                  | 2              |
|               | 60             | 65.5               | 10080          | 12480          | 24160          | 25940     | 126                  | 2              |
|               | 70             | 60.5               | 7770           | 9810           | 19270          | 20810     | 120                  | 1              |
|               | 80             | 55.3               | 6060           | 7840           | 15780          | 17130     | 114                  | 1              |
|               | 90             | 49.7               | 4740           | 6320           | 13150          | 14350     | 106                  | 1              |
|               | 100            | 43.6               | 3690           | 5110           | 11090          | 12180     | 97                   | 1              |
|               | 110            | 36.7               | 2820           | 4110           | 9440           | 10430     | 85                   | 1              |
|               | 120            | 28.4               | 2100           | 3280           | 8080           | 8990      | 69                   | 1              |
| 130           | 16.5           | 1470               | 2560           | 6920           | 7760           | 44        | 1                    |                |

(Continued)

FORM NO. 7460-TR-4B

Courtesy of CraneMarket

# LIFT RATINGS (cont.)

With 59S Tubular Hammerhead Boom

| Boom Lgth | Radius In Feet | Boom Angle Degrees | Free Over Side | Free Over Rear | Outriggers Set |           | Foot From Boom Point | Min. Load Line |
|-----------|----------------|--------------------|----------------|----------------|----------------|-----------|----------------------|----------------|
|           |                |                    |                |                | Over Side      | Over Rear |                      |                |
| 140 feet  | 24             | 82.6               | --             | --             | 73010          | 73010     | 146                  | 3              |
|           | 25             | 82.2               | --             | --             | 73010          | 73010     | 146                  | 3              |
|           | 30             | 80.1               | --             | --             | 67890          | 70930     | 145                  | 3              |
|           | 35             | 78.0               | --             | --             | 53270          | 56070     | 144                  | 3              |
|           | 40             | 75.9               | --             | --             | 43520          | 46060     | 143                  | 2              |
|           | 50             | 71.7               | --             | --             | 31320          | 33430     | 140                  | 2              |
|           | 60             | 67.3               | --             | --             | 24000          | 25780     | 136                  | 2              |
|           | 70             | 62.8               | --             | --             | 19110          | 20650     | 132                  | 1              |
|           | 80             | 58.1               | --             | --             | 15610          | 16960     | 126                  | 1              |
|           | 90             | 53.1               | --             | --             | 12980          | 14180     | 119                  | 1              |
|           | 100            | 47.8               | --             | --             | 10920          | 12010     | 111                  | 1              |
|           | 110            | 41.9               | --             | --             | 9270           | 10260     | 101                  | 1              |
|           | 120            | 35.3               | --             | --             | 7920           | 8820      | 88                   | 1              |
|           | 130            | 27.3               | --             | --             | 6780           | 7610      | 71                   | 1              |
| 140       | 15.9           | --                 | --             | 5790           | 6570           | 45        | 1                    |                |

| Boom Lgth | Radius In Feet | Boom Angle Degrees | Free Over Side | Free Over Rear | Outriggers Set |           | Foot From Boom Point | Min. Load Line |
|-----------|----------------|--------------------|----------------|----------------|----------------|-----------|----------------------|----------------|
|           |                |                    |                |                | Over Side      | Over Rear |                      |                |
| 150 feet  | 25             | 82.7               | --             | --             | 62370          | 62370     | 156                  | 3              |
|           | 30             | 80.8               | --             | --             | 62370          | 62370     | 155                  | 3              |
|           | 35             | 78.8               | --             | --             | 53020          | 55820     | 154                  | 3              |
|           | 40             | 76.9               | --             | --             | 43270          | 45810     | 153                  | 2              |
|           | 50             | 72.9               | --             | --             | 31090          | 33190     | 151                  | 2              |
|           | 60             | 68.9               | --             | --             | 23770          | 25550     | 147                  | 1              |
|           | 70             | 64.8               | --             | --             | 18880          | 20420     | 143                  | 1              |
|           | 80             | 60.4               | --             | --             | 15390          | 16740     | 138                  | 1              |
|           | 90             | 55.9               | --             | --             | 12760          | 13960     | 131                  | 1              |
|           | 100            | 51.2               | --             | --             | 10710          | 11800     | 124                  | 1              |
|           | 110            | 46.1               | --             | --             | 9070           | 10050     | 115                  | 1              |
|           | 120            | 40.4               | --             | --             | 7720           | 8620      | 104                  | 1              |
|           | 130            | 34.1               | --             | --             | 6590           | 7420      | 91                   | 1              |
|           | 140            | 26.3               | --             | --             | 5620           | 6390      | 73                   | 1              |
|           | 150            | 15.3               | --             | --             | 4780           | 5500      | 46                   | 1              |

7460.03

# LIFT RATINGS

With 59S Tubular Tapered Tip Boom and "L-L" Counterweight (24,800 lbs.)

| Boom Lgth | Radius In Feet | Boom Angle Degrees | Free Over Side | Free Over Rear | Outriggers Set |           | Foot From Boom Point | Min. Load Line |
|-----------|----------------|--------------------|----------------|----------------|----------------|-----------|----------------------|----------------|
|           |                |                    |                |                | Over Side      | Over Rear |                      |                |
| 60 feet   | 14             | 80.5               | ---            | 91910          | 153940         | 153940    | 66                   | 6              |
|           | 15             | 79.6               | ---            | 83470          | 153940         | 153940    | 66                   | 6              |
|           | 20             | 74.7               | 40110          | 56800          | 137570         | 137570    | 64                   | 6              |
|           | 25             | 69.6               | 32650          | 42720          | 92450          | 95660     | 63                   | 4              |
|           | 30             | 64.5               | 27360          | 34010          | 68630          | 71780     | 61                   | 3              |
|           | 35             | 59.0               | 23420          | 28090          | 54320          | 57210     | 58                   | 3              |
|           | 40             | 53.3               | 20140          | 23790          | 44780          | 47390     | 55                   | 2              |
| 70 feet   | 50             | 40.1               | 15080          | 17980          | 32830          | 34980     | 45                   | 2              |
|           | 60             | 21.4               | 11810          | 14210          | 25630          | 27450     | 28                   | 2              |
|           | 16             | 80.2               | 48430          | 76280          | 153940         | 153940    | 76                   | 6              |
|           | 20             | 76.9               | 39820          | 56680          | 137390         | 137390    | 75                   | 6              |
|           | 25             | 72.6               | 32380          | 42590          | 92460          | 95650     | 73                   | 4              |
|           | 30             | 68.3               | 27100          | 33870          | 68600          | 71730     | 72                   | 3              |
|           | 35             | 63.8               | 23170          | 27950          | 54270          | 57140     | 69                   | 3              |
| 80 feet   | 40             | 59.2               | 20000          | 23660          | 44710          | 47310     | 67                   | 2              |
|           | 50             | 49.1               | 14950          | 17850          | 32740          | 34890     | 59                   | 2              |
|           | 60             | 37.0               | 11680          | 14090          | 25540          | 27350     | 49                   | 2              |
|           | 70             | 19.8               | 9390           | 11440          | 20720          | 22280     | 30                   | 1              |
|           | 17             | 80.7               | 45650          | 70130          | 153940         | 153940    | 86                   | 6              |
|           | 20             | 78.6               | 39520          | 56540          | 137190         | 137190    | 85                   | 6              |
|           | 25             | 74.9               | 32090          | 42430          | 92440          | 95610     | 84                   | 4              |
| 90 feet   | 30             | 71.1               | 26820          | 33720          | 68530          | 71660     | 82                   | 3              |
|           | 35             | 67.3               | 22900          | 27790          | 54180          | 57050     | 80                   | 3              |
|           | 40             | 63.4               | 19840          | 23490          | 44610          | 47200     | 78                   | 2              |
|           | 50             | 55.0               | 14790          | 17680          | 32630          | 34770     | 72                   | 2              |
|           | 60             | 45.7               | 11530          | 13930          | 25420          | 27230     | 64                   | 2              |
|           | 70             | 34.6               | 9240           | 11290          | 20610          | 22160     | 52                   | 1              |
|           | 80             | 18.5               | 7540           | 9330           | 17140          | 18510     | 32                   | 1              |
|           | 90 feet        | 19                 | 80.5           | 41060          | 60310          | 144060    | 144060               | 95             |
| 20        |                | 79.8               | 39200          | 56380          | 136970         | 136970    | 95                   | 6              |
| 25        |                | 76.6               | 31780          | 42260          | 92390          | 95550     | 94                   | 4              |
| 30        |                | 73.3               | 26530          | 33540          | 68450          | 71560     | 93                   | 3              |
| 35        |                | 69.9               | 22610          | 27610          | 54080          | 56930     | 91                   | 3              |
| 40        |                | 66.5               | 19580          | 23310          | 44490          | 47080     | 89                   | 2              |
| 50        |                | 59.4               | 14610          | 17500          | 32490          | 34630     | 84                   | 2              |
| 60        |                | 51.6               | 11350          | 13750          | 25280          | 27090     | 77                   | 2              |
| 70        |                | 43.0               | 9070           | 11120          | 20460          | 22020     | 68                   | 1              |
| 80        |                | 32.5               | 7380           | 9170           | 17010          | 18370     | 55                   | 1              |
| 90        | 17.4           | 6070               | 7650           | 14400          | 15610          | 34        | 1                    |                |

| Boom Lgth | Radius In Feet | Boom Angle Degrees | Free Over Side | Free Over Rear | Outriggers Set |           | Foot From Boom Point | Min. Load Line |
|-----------|----------------|--------------------|----------------|----------------|----------------|-----------|----------------------|----------------|
|           |                |                    |                |                | Over Side      | Over Rear |                      |                |
| 100 feet  | 20             | 80.9               | 38930          | 56240          | 126240         | 126240    | 105                  | 5              |
|           | 25             | 78.0               | 31520          | 42120          | 92350          | 95490     | 104                  | 4              |
|           | 30             | 75.0               | 26270          | 33390          | 68370          | 71480     | 103                  | 3              |
|           | 35             | 72.0               | 22370          | 27450          | 53980          | 56830     | 102                  | 3              |
|           | 40             | 69.0               | 19340          | 23160          | 44380          | 46960     | 100                  | 2              |
|           | 50             | 62.7               | 14450          | 17350          | 32370          | 34500     | 95                   | 2              |
|           | 60             | 56.0               | 11200          | 13600          | 25160          | 26950     | 90                   | 2              |
|           | 70             | 48.8               | 8920           | 10970          | 20340          | 21890     | 82                   | 1              |
|           | 80             | 40.6               | 7240           | 9020           | 16880          | 18240     | 72                   | 1              |
|           | 90             | 30.8               | 5940           | 7520           | 14280          | 15490     | 58                   | 1              |
|           | 100            | 16.5               | 4890           | 6310           | 12240          | 13330     | 35                   | 1              |
| 110 feet  | 22             | 80.6               | 35300          | 49480          | 114290         | 114290    | 115                  | 5              |
|           | 25             | 79.1               | 31200          | 41930          | 92290          | 95410     | 115                  | 4              |
|           | 30             | 76.4               | 25970          | 33200          | 68270          | 71370     | 113                  | 3              |
|           | 35             | 73.7               | 22060          | 27260          | 53860          | 56700     | 112                  | 3              |
|           | 40             | 71.0               | 19040          | 22960          | 44250          | 46820     | 111                  | 2              |
|           | 50             | 65.4               | 14260          | 17150          | 32220          | 34350     | 107                  | 2              |
|           | 60             | 59.5               | 11010          | 13400          | 25000          | 26790     | 101                  | 2              |
|           | 70             | 53.2               | 8730           | 10780          | 20170          | 21720     | 95                   | 1              |
|           | 80             | 46.4               | 7050           | 8830           | 16720          | 18080     | 86                   | 1              |
|           | 90             | 38.7               | 5750           | 7330           | 14120          | 15330     | 75                   | 1              |
|           | 100            | 29.4               | 4720           | 6140           | 12090          | 13180     | 61                   | 1              |
| 120 feet  | 110            | 16.7               | 3860           | 5150           | 10450          | 11440     | 36                   | 1              |
|           | 23             | 81.0               | 33500          | 46520          | 99910          | 99910     | 125                  | 4              |
|           | 25             | 80.0               | 30880          | 41740          | 92220          | 95330     | 125                  | 4              |
|           | 30             | 77.5               | 25650          | 33000          | 68170          | 71250     | 124                  | 3              |
|           | 35             | 75.1               | 21760          | 27060          | 53730          | 56560     | 123                  | 3              |
|           | 40             | 72.6               | 18740          | 22760          | 44100          | 46670     | 121                  | 2              |
|           | 50             | 67.5               | 14060          | 16950          | 32060          | 34180     | 117                  | 2              |
|           | 60             | 62.2               | 10810          | 13200          | 24830          | 26620     | 113                  | 2              |
|           | 70             | 56.7               | 8530           | 10580          | 20000          | 21540     | 107                  | 1              |
|           | 80             | 50.8               | 6850           | 8630           | 16540          | 17900     | 100                  | 1              |
|           | 90             | 44.3               | 5560           | 7140           | 13940          | 15150     | 90                   | 1              |
|           | 100            | 37.0               | 4530           | 5940           | 11910          | 13000     | 79                   | 1              |
| 130 feet  | 110            | 28.1               | 3680           | 4970           | 10280          | 11270     | 63                   | 1              |
|           | 120            | 15.1               | 2970           | 4150           | 8940           | 9840      | 38                   | 1              |
|           | 25             | 80.8               | 30550          | 41550          | 87460          | 87460     | 135                  | 4              |
|           | 30             | 78.5               | 25330          | 32810          | 68060          | 71130     | 134                  | 3              |
| 35        | 76.3           | 21440              | 26860          | 53600          | 56420          | 133       | 3                    |                |

# LIFT RATINGS (cont.)

With 59S Tubular Tapered Tip Boom

| Boom Lgth      | Radius In Feet | Boom Angle Degrees | Froo Over Side | Froo Over Rear | Outriggers Set |           | Foot From Boom Point | Min. Load Line |
|----------------|----------------|--------------------|----------------|----------------|----------------|-----------|----------------------|----------------|
|                |                |                    |                |                | Over Side      | Over Rear |                      |                |
| 130 feet Cont. | 40             | 74.0               | 18430          | 22560          | 43960          | 46520     | 132                  | 2              |
|                | 50             | 69.3               | 13860          | 16740          | 31900          | 34010     | 128                  | 2              |
|                | 60             | 64.5               | 10600          | 12990          | 24660          | 26440     | 124                  | 2              |
|                | 70             | 59.6               | 8330           | 10370          | 19820          | 21360     | 119                  | 1              |
|                | 80             | 54.3               | 6650           | 8430           | 16360          | 17710     | 112                  | 1              |
|                | 90             | 48.7               | 5350           | 6930           | 13760          | 14970     | 104                  | 1              |
|                | 100            | 42.5               | 4330           | 5740           | 11730          | 12820     | 94                   | 1              |
|                | 110            | 35.5               | 3490           | 4770           | 10100          | 11090     | 82                   | 1              |
|                | 120            | 27.0               | 2780           | 3960           | 8760           | 9670      | 68                   | 1              |
|                | 130            | 14.5               | 2180           | 3270           | 7630           | 8470      | 39                   | 1              |
| 140 feet       | 27             | 80.6               | --             | --             | 73970          | 73970     | 145                  | 3              |
|                | 30             | 79.3               | --             | --             | 67950          | 71010     | 144                  | 3              |
|                | 35             | 77.3               | --             | --             | 53470          | 56290     | 143                  | 3              |
|                | 40             | 75.2               | --             | --             | 43820          | 46370     | 142                  | 2              |
|                | 50             | 70.9               | --             | --             | 31740          | 33860     | 139                  | 2              |
|                | 60             | 66.5               | --             | --             | 24490          | 26280     | 135                  | 2              |
|                | 70             | 61.9               | --             | --             | 19650          | 21190     | 130                  | 1              |
|                | 80             | 57.2               | --             | --             | 16190          | 17540     | 124                  | 1              |
|                | 90             | 52.2               | --             | --             | 13590          | 14790     | 117                  | 1              |
|                | 100            | 46.8               | --             | --             | 11560          | 12650     | 109                  | 1              |
|                | 110            | 40.9               | --             | --             | 9930           | 10920     | 98                   | 1              |
|                | 120            | 34.1               | --             | --             | 8600           | 9500      | 85                   | 1              |
|                | 130            | 26.0               | --             | --             | 7480           | 8310      | 68                   | 1              |
|                | 140            | 13.9               | --             | --             | 5620           | 7290      | 40                   | 1              |
| 150 feet       | 28             | 80.8               | --             | --             | 64320          | 64320     | 155                  | 3              |
|                | 30             | 80.1               | --             | --             | 64120          | 64120     | 154                  | 3              |
|                | 35             | 78.1               | --             | --             | 53340          | 56140     | 153                  | 3              |
|                | 40             | 76.2               | --             | --             | 43670          | 46210     | 152                  | 2              |
|                | 50             | 72.2               | --             | --             | 31580          | 33680     | 149                  | 2              |
|                | 60             | 68.1               | --             | --             | 24320          | 26100     | 146                  | 2              |
|                | 70             | 63.9               | --             | --             | 19470          | 21010     | 141                  | 1              |
|                | 80             | 59.6               | --             | --             | 16000          | 17350     | 136                  | 1              |
|                | 90             | 55.1               | --             | --             | 13400          | 14600     | 130                  | 1              |
|                | 100            | 50.3               | --             | --             | 11370          | 12450     | 122                  | 1              |
|                | 110            | 45.1               | --             | --             | 9740           | 10730     | 113                  | 1              |
|                | 120            | 39.4               | --             | --             | 8410           | 9310      | 102                  | 1              |
|                | 130            | 32.9               | --             | --             | 7290           | 8120      | 88                   | 1              |
|                | 140            | 25.1               | --             | --             | 6340           | 7110      | 70                   | 1              |
| 150            | 13.5           | --                 | --             | 5510           | 6240           | 42        | 1                    |                |
| 160 feet       | 30             | 80.7               | --             | --             | 56180          | 56180     | 164                  | 3              |
|                | 35             | 78.9               | --             | --             | 53200          | 56000     | 164                  | 3              |
|                | 40             | 77.0               | --             | --             | 43510          | 46060     | 163                  | 2              |
|                | 50             | 73.3               | --             | --             | 31410          | 33510     | 160                  | 2              |
|                | 60             | 69.6               | --             | --             | 24140          | 25910     | 157                  | 2              |
|                | 70             | 65.7               | --             | --             | 19280          | 20820     | 152                  | 1              |
|                | 80             | 61.7               | --             | --             | 15810          | 17160     | 147                  | 1              |
|                | 90             | 57.5               | --             | --             | 13210          | 14410     | 142                  | 1              |
|                | 100            | 53.2               | --             | --             | 11180          | 12260     | 135                  | 1              |
|                | 110            | 48.6               | --             | --             | 9550           | 10530     | 127                  | 1              |
|                | 120            | 43.6               | --             | --             | 8210           | 9110      | 117                  | 1              |
|                | 130            | 38.1               | --             | --             | 7100           | 7930      | 105                  | 1              |
|                | 140            | 31.9               | --             | --             | 6150           | 6920      | 91                   | 1              |
|                | 150            | 24.3               | --             | --             | 5330           | 6050      | 72                   | 1              |
|                | 160            | 13.0               | --             | --             | 4610           | 5290      | 43                   | 1              |
|                | 170 feet       | 31                 | 80.9           | --             | --             | 47980     | 47980                | 174            |
| 35             |                | 79.5               | --             | --             | 47570          | 47570     | 174                  | 2              |
| 40             |                | 77.8               | --             | --             | 43360          | 45890     | 173                  | 2              |
| 50             |                | 74.3               | --             | --             | 31230          | 33330     | 170                  | 2              |
| 60             |                | 70.8               | --             | --             | 23950          | 25720     | 167                  | 2              |
| 70             |                | 67.2               | --             | --             | 19090          | 20620     | 163                  | 1              |
| 80             |                | 63.5               | --             | --             | 15620          | 16960     | 159                  | 1              |

| Boom Lgth      | Radius In Feet | Boom Angle Degrees | Froo Over Side | Froo Over Rear | Outriggers Set |           | Foot From Boom Point | Min. Load Line |
|----------------|----------------|--------------------|----------------|----------------|----------------|-----------|----------------------|----------------|
|                |                |                    |                |                | Over Side      | Over Rear |                      |                |
| 170 feet Cont. | 90             | 59.7               | --             | --             | 13010          | 14210     | 153                  | 1              |
|                | 100            | 55.7               | --             | --             | 10980          | 12060     | 147                  | 1              |
|                | 110            | 51.5               | --             | --             | 9350           | 10330     | 140                  | 1              |
|                | 120            | 47.0               | --             | --             | 8010           | 8910      | 131                  | 1              |
|                | 130            | 42.2               | --             | --             | 6900           | 7730      | 121                  | 1              |
|                | 140            | 36.9               | --             | --             | 5950           | 6720      | 109                  | 1              |
|                | 150            | 30.9               | --             | --             | 5130           | 5850      | 94                   | 1              |
|                | 160            | 23.5               | --             | --             | 4420           | 5100      | 74                   | 1              |
|                | 170            | 12.6               | --             | --             | 3790           | 4420      | 44                   | 1              |
|                | 180 feet       | 33                 | 80.8           | --             | --             | 42420     | 42420                | 184            |
| 35             |                | 80.1               | --             | --             | 42270          | 42270     | 184                  | 2              |
| 40             |                | 78.5               | --             | --             | 41790          | 41790     | 183                  | 2              |
| 50             |                | 75.2               | --             | --             | 31070          | 33160     | 181                  | 2              |
| 60             |                | 71.9               | --             | --             | 23780          | 25550     | 178                  | 1              |
| 70             |                | 68.5               | --             | --             | 18910          | 20440     | 174                  | 1              |
| 80             |                | 65.1               | --             | --             | 15440          | 16780     | 170                  | 1              |
| 90             |                | 61.5               | --             | --             | 12830          | 14020     | 165                  | 1              |
| 100            |                | 57.8               | --             | --             | 10790          | 11870     | 159                  | 1              |
| 110            |                | 54.0               | --             | --             | 9160           | 10140     | 152                  | 1              |
| 120            |                | 49.9               | --             | --             | 7820           | 8720      | 144                  | 1              |
| 130            |                | 45.6               | --             | --             | 6710           | 7540      | 135                  | 1              |
| 140            |                | 41.0               | --             | --             | 5760           | 6530      | 125                  | 1              |
| 150            |                | 35.9               | --             | --             | 4950           | 5670      | 112                  | 1              |
| 160            |                | 30.0               | --             | --             | 4240           | 4910      | 97                   | 1              |
| 170            |                | 22.8               | --             | --             | 3610           | 4250      | 76                   | 1              |
| 180            |                | 12.3               | --             | --             | 3050           | 3650      | 45                   | 1              |
| 190 feet       |                | 34                 | 81.0           | --             | --             | 37710     | 37710                | 194            |
|                | 35             | 80.6               | --             | --             | 37580          | 37580     | 194                  | 2              |
|                | 40             | 79.1               | --             | --             | 37110          | 37110     | 193                  | 2              |
|                | 50             | 76.0               | --             | --             | 30890          | 32980     | 191                  | 2              |
|                | 60             | 72.9               | --             | --             | 23590          | 25360     | 188                  | 1              |
|                | 70             | 69.7               | --             | --             | 18720          | 20250     | 185                  | 1              |
|                | 80             | 66.5               | --             | --             | 15240          | 16580     | 181                  | 1              |
|                | 90             | 63.1               | --             | --             | 12630          | 13820     | 176                  | 1              |
|                | 100            | 59.7               | --             | --             | 10590          | 11670     | 171                  | 1              |
|                | 110            | 56.1               | --             | --             | 8960           | 9940      | 164                  | 1              |
|                | 120            | 52.4               | --             | --             | 7620           | 8520      | 157                  | 1              |
|                | 130            | 48.5               | --             | --             | 6510           | 7340      | 149                  | 1              |
|                | 140            | 44.3               | --             | --             | 5560           | 6330      | 139                  | 1              |
|                | 150            | 39.8               | --             | --             | 4740           | 5460      | 128                  | 1              |
| 160            | 34.9           | --                 | --             | 4030           | 4710           | 115       | 1                    |                |
| 170            | 29.2           | --                 | --             | 3410           | 4050           | 99        | 1                    |                |
| 180            | 22.2           | --                 | --             | 2860           | 3460           | 78        | 1                    |                |
| 190            | 12.0           | --                 | --             | 2360           | 2920           | 46        | 1                    |                |
| 200 feet       | 36             | 80.8               | --             | --             | 33650          | 33650     | 204                  | 2              |
|                | 40             | 79.7               | --             | --             | 33270          | 33270     | 203                  | 2              |
|                | 50             | 76.7               | --             | --             | 30720          | 32140     | 201                  | 2              |
|                | 60             | 73.8               | --             | --             | 23410          | 25170     | 199                  | 1              |
|                | 70             | 70.8               | --             | --             | 18530          | 20050     | 195                  | 1              |
|                | 80             | 67.7               | --             | --             | 15050          | 16380     | 192                  | 1              |
|                | 90             | 64.6               | --             | --             | 12430          | 13620     | 187                  | 1              |
|                | 100            | 61.4               | --             | --             | 10390          | 11460     | 182                  | 1              |
|                | 110            | 58.0               | --             | --             | 8760           | 9730      | 176                  | 1              |
|                | 120            | 54.6               | --             | --             | 7420           | 8310      | 170                  | 1              |
|                | 130            | 51.0               | --             | --             | 6300           | 7130      | 162                  | 1              |
|                | 140            | 47.2               | --             | --             | 5350           | 6120      | 153                  | 1              |
|                | 150            | 43.2               | --             | --             | 4540           | 5260      | 143                  | 1              |
|                | 160            | 38.8               | --             | --             | 3830           | 4500      | 132                  | 1              |
|                | 170            | 34.0               | --             | --             | 3210           | 3840      | 118                  | 1              |
|                | 180            | 28.4               | --             | --             | 2660           | 3250      | 102                  | 1              |
| 190            | 21.7           | --                 | --             | 2160           | 2730           | 80        | 1                    |                |
| 200            | 11.7           | --                 | --             | 1710           | 2250           | 47        | 1                    |                |

# CRANE RATING DATA

Load ratings are in pounds and do not exceed 85% of the load which would cause tipping with crane standing level on firm uniformly supporting surface. Safe loads depend on ground conditions, boom length, radius of operation, and proper handling, all of which must be taken into consideration by user.

Tire inflation pressure for "Free Ratings" is 100 P.S.I. Free ratings do not exceed maximum permissible tire load. Tire pressure shall be reduced for over-the-road travel.

Approved working areas "Free Over Side" and "Free Over Rear" are shown under Diagram No. 1. Approved working areas "Outriggers Extended and Set Over Side or Rear" are shown under Diagram No. 2.

"Radius in feet" is the horizontal distance at crane base level from center pin to a vertical line through the center of gravity of the suspended load.

Lifting is approved only in those areas for which ratings are shown in the rating chart. Blocks, slings, buckets, and other load carrying devices are considered part of the load. Retractable A-frame must be in fully raised position for all ratings. Ratings in shaded areas are limited by strength of material or factors other than stability.

Main load line is 1 inch diameter with a minimum breaking strength of 89,800 pounds. Boom suspension line is 3/4 inch diameter with a minimum breaking strength of 58,800 pounds. Boom suspension pendants are 1-3/8 inch diameter with a minimum breaking strength of 208,000 pounds.

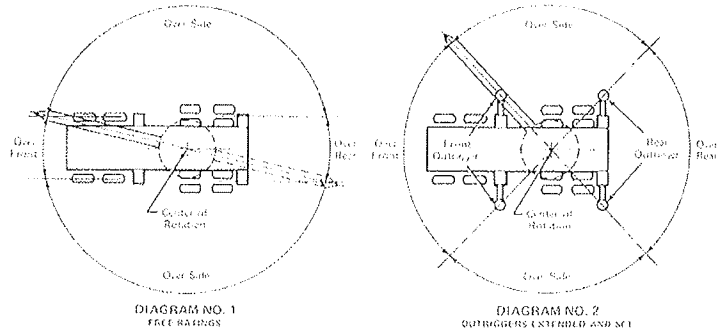
Boom and jib erection is over the rear of the machine with outriggers extended and set and with "Lift Rating" counterweight. A-frame must be fully raised and blocks, slings and other load carrying devices must be on the ground.

Compliance to B30.5 based on AMERICAN® carrier mounting.

Designed and rated to comply with ANSI Code B30.5.

## BOOM AND JIB ERECTION

| 59H Tubular Boom | Maximum Jib Length |       |
|------------------|--------------------|-------|
|                  | No. 9HL            | No. 9 |
| 200' Tapered Tip | 50'                | 30'   |
| 190' Tapered Tip | 60'                | 50'   |
| 150' Hammerhead  | 60'                | 50'   |



## LOAD HOISTING DATA\*

| Maximum Lifting Capacity in Pounds | Minimum Parts of Load Line | Maximum Hoisting Distance             |                                       |  |
|------------------------------------|----------------------------|---------------------------------------|---------------------------------------|--|
|                                    |                            | RH Drum with Controlled Load Lowering | LH Drum with Controlled Load Lowering | LH Drum without Controlled Load Lowering |
| 180,000                            | 8                          | 72'                                   | 45'                                   | 55'                                      |
| 179,600                            | 7                          | 83'                                   | 52'                                   | 63'                                      |
| 153,940                            | 6                          | 96'                                   | 60'                                   | 73'                                      |
| 128,280                            | 5                          | 116'                                  | 72'                                   | 88'                                      |
| 102,630                            | 4                          | 145'                                  | 91'                                   | 110'                                     |
| 76,970                             | 3                          | 193'                                  | 121'                                  | 147'                                     |
| 51,310                             | 2                          | 290'                                  | 182'                                  | 221'                                     |
| 25,660                             | 1                          | 581'                                  | 364'                                  | 442'                                     |

\*Based on 1" IPS Rope.

# BOOM COMPOSITION

## 59S TAPERED TIP BOOM

## 59S HAMMERHEAD BOOM

| Boom Length in Feet | 20 Ft. 59SH Inner | 10 Ft. 59S Center | 20 Ft. 59S Center | 40 Ft. 59S Center | 20 Ft. 59SH Outer Base | Hammerhead |
|---------------------|-------------------|-------------------|-------------------|-------------------|------------------------|------------|
| 40                  | 1                 | -                 | -                 | -                 | 1                      | 1          |
| 50                  | 1                 | -                 | -                 | -                 | 1                      | 1          |
| 60                  | 1                 | -                 | 1                 | -                 | 1                      | 1          |
| 70                  | 1                 | 1                 | 1                 | -                 | 1                      | 1          |
| 80                  | 1                 | -                 | -                 | 1                 | 1                      | 1          |
| 90                  | 1                 | 1                 | -                 | 1                 | 1                      | 1          |
| 100                 | 1                 | -                 | 1                 | 1                 | 1                      | 1          |
| 110                 | 1                 | 1                 | 1                 | 1                 | 1                      | 1          |
| 120                 | 1                 | -                 | -                 | 2                 | 1                      | 1          |
| 130                 | 1                 | 1                 | -                 | 2                 | 1                      | 1          |
| 140                 | 1                 | -                 | 1                 | 2                 | 1                      | 1          |
| 150                 | 1                 | 1                 | 1                 | 2                 | 1                      | 1          |

| Boom Length in Feet | 20 Ft. 59SH Inner | 10 Ft. 59S Center | 20 Ft. 59S Center | 40 Ft. 59S Center | 20 Ft. 59SH Outer Base | 20 Ft. 59SH Tapered Tip |
|---------------------|-------------------|-------------------|-------------------|-------------------|------------------------|-------------------------|
| 60                  | 1                 | -                 | -                 | -                 | 1                      | 1                       |
| 70                  | 1                 | 1                 | -                 | -                 | 1                      | 1                       |
| 80                  | 1                 | -                 | 1                 | -                 | 1                      | 1                       |
| 90                  | 1                 | 1                 | 1                 | -                 | 1                      | 1                       |
| 100                 | 1                 | -                 | -                 | 1                 | 1                      | 1                       |
| 110                 | 1                 | 1                 | -                 | 1                 | 1                      | 1                       |
| 120                 | 1                 | -                 | 1                 | 1                 | 1                      | 1                       |
| 130                 | 1                 | 1                 | 1                 | 1                 | 1                      | 1                       |
| 140                 | 1                 | -                 | -                 | 2                 | 1                      | 1                       |
| 150                 | 1                 | 1                 | -                 | 2                 | 1                      | 1                       |
| 160                 | 1                 | -                 | 1                 | 2                 | 1                      | 1                       |
| 170                 | 1                 | 1                 | 1                 | 2                 | 1                      | 1                       |
| 180                 | 1                 | -                 | -                 | 3                 | 1                      | 1                       |
| 190                 | 1                 | 1                 | -                 | 3                 | 1                      | 1                       |
| 200                 | 1                 | -                 | 1                 | 3                 | 1                      | 1                       |