



FOR NEW EQUIPMENT SALES, CALL
800.958.2555
TO SPEAK WITH AN ALTEC REPRESENTATIVE
or visit us online at altec.com


REMOTE CONTROLLED
RIGHT-OF-WAY LINE CLEARING

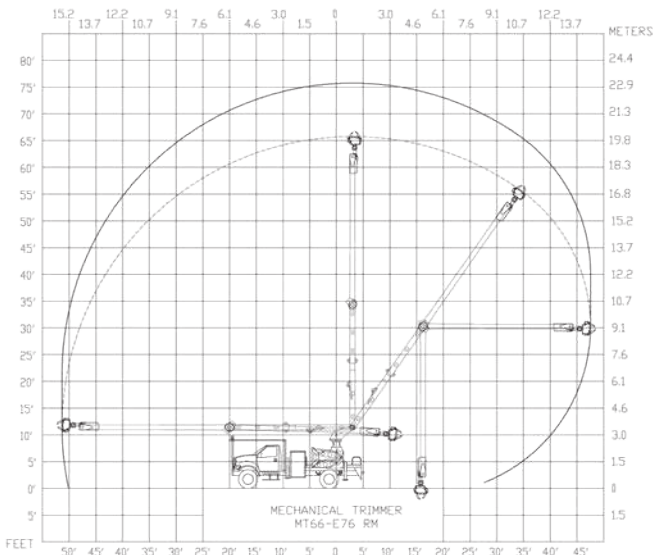
STANDARD FEATURES

- Altec Designed Cutting Head with Grapple
- Allows Cut and Hold or Cut and Drop
- Insulated to 46KV
- Lower Boom Articulation 0 to 125°
- Upper Boom Articulation 0 to 270°
- Scanreco Remote Controller
- Overcenter Aerial Allows Cuts Over Power Lines
- Compact 10 ft (3 m) Compensated Vertical Elevator

OPTIONS

- 4x4 Chassis

REACH DIAGRAM



SPECIFICATIONS

| | |
|--|-----------------------|
| Travel Height | 12.7 ft (3.86 m) |
| Maximum Ground to Center of Grapple Height | 76 ft (23.16 m) |
| Maximum Reach - Upper Boom Over Center | 51.3 ft (15.64 m) |
| Maximum Reach - Upper Boom in Working Position | 47.5 ft (14.48 m) |
| Maximum Cut Diameter with Grapple | 10 in (25.4 cm) |
| Maximum Cut Diameter without Grapple | 14 in (35.56 cm) |
| Maximum Weight | 150 lb (68 kg) |
| Maximum Length at Maximum Weight | 15 ft (4.57 m) |
| Saw Bar Length | 19 in (48 cm) |
| Saw Chain Pitch | 0.404 in |
| Saw Chain Length | 61 Drive Links |
| Lower Boom Isolation Gap | 15 in (38.10 cm) |
| Rotation | Continuous |
| System Flow | 20 gpm (75.71 lpm) |
| System Pressure | 4300 psi (296.47 bar) |
| Maximum Recommended Wind Speed | 30 mph (48 kph) |

Altec designed cutting head provides three methods of articulation for ease of positioning for cutting.



The unit is equipped with a diagnostic panel to provide the operator or maintenance technician information to trouble shoot issues with the unit.



Permanently installed cutting head allows for quick jobsite set up.



For more complete information on Altec products and services, visit us on the web at www.altec.com. Material and specifications are subject to change without notice. Featured units in photos may include optional features. Please contact an Altec representative for all available options. Altec® and the Altec logo are registered trademarks of Altec Inc. in the United States and various other countries and may not be used without permission. © 2021 Altec Inc. All Rights Reserved. AIOSMT66E76-1021-v1-r2