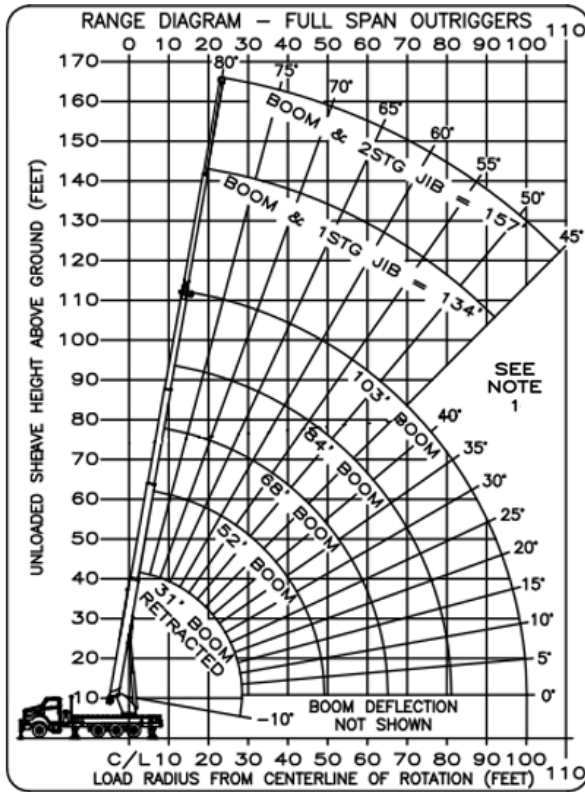


AC40-103S | LOAD CHARTS

FULL SPAN OUTRIGGERS



BOOM LOAD CAPACITIES (LBS) WITH FULL SPAN OUTRIGGERS (24 FT)

LOAD RADIUS (FT)	31 FT BOOM		52 FT BOOM		68 FT BOOM		84 FT BOOM		103 FT BOOM	
	▲	▲	▲	▲	▲	▲	▲	▲	▲	▲
5	76	80000								
8	71	62000								
10	67	54000	77	35000						
13	61	45700	74	33000	78	33000				
15	56	40200	71	31500	76	31500				
17	51	34600	68	30500	74	30100	78	24500		
20	44	28400	65	29000	72	27300	76	21000	79	14500
25	28	21300	58	22000	67	22200	72	18500	76	14000
30			51	17300	62	17600	68	16000	73	13000
35			44	13700	57	14000	65	14000	71	11500
40			35	11000	52	11200	61	11200	68	10300
45			23	8700	46	8900	57	9000	65	9200
50					39	7600	52	7400	62	7500
55					33	6300	47	6200	58	6300
60					23	5200	43	5100	55	5200
65							37	4200	51	4500
70							30	3500	47	3800
75							23	2900	43	3200
80							9	2300	39	2600
85									33	2100
90									27	1600
95									19	1300
	0	16000	0	6500	0	4200	0	1600	0	800
	630		380		290		240		200	
	810		490		370		300		250	

NOTE: RATINGS ABOVE THE HEAVY LINE ARE BASED ON STRUCTURAL COMPETENCE AND NOT ON MACHINE STABILITY

JIB LOAD CAPACITIES (LBS) FOR ALL BOOM LENGTHS. JIB CAPACITIES ARE FOR FULL SPAN OUTRIGGERS (24 FT)

LOADED BOOM ANGLE	JIB CAPACITIES ARE FOR FULL SPAN OUTRIGGERS (24 FT)							
	45°*	50°	55°	60°	65°	70°	75°	80°
FIXED 31 FT JIB	1430	1990	2700	3700	4650	5500	6000	6800
TELESCOPING JIB	RETRACTED 31 FT JIB	900	1400	2100	3100	4100	5200	6400
	EXTENDED 55 FT JIB	600	1050	1600	1850	2300	3000	3400

* DO NOT OPERATE JIBS BELOW THIS ANGLE UNLESS BOOM IS FULLY RETRACTED. SEE NOTE 1. 970276632 B (SHEET 1)

AREA OF OPERATION

360° CAPACITY WORKING AREA WITH FULL SPAN AND FRONT BUMPER OUTRIGGERS

24 FT FULL SPAN MAIN & AUX OUTRIGGERS SPREAD

DEDUCTIONS FROM RATED LOADS FOR HANDLING DEVICES

OVERHAUL BALL: 230 LBS

1-SHEAVE LOADBLOCK: 360 LBS

2-SHEAVE LOADBLOCK: 500 LBS

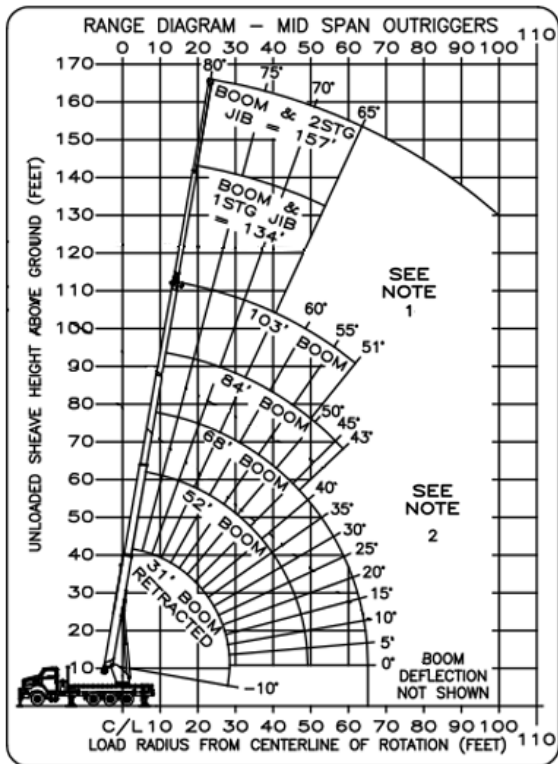
3-SHEAVE LOADBLOCK: 600 LBS

0° BOOM CAPACITIES

STOWED 1-STAGE JIB LOAD DEDUCTIONS

STOWED 2-STAGE JIB LOAD DEDUCTIONS

MID SPAN OUTRIGGERS



BOOM LOAD CAPACITIES (LBS) WITH MID SPAN OUTRIGGERS (15 FT 8 IN)

LOAD RADIUS (FT)	31 FT BOOM		52 FT BOOM		68 FT BOOM		84 FT BOOM		103 FT BOOM	
	▲	▲	▲	▲	▲	▲	▲	▲	▲	▲
5	77	70000								
8	71	55000								
10	68	48000	77	34000						
13	62	39300	74	30100	78	32000				
15	57	33500	71	27500	76	28000	79	24000		
17	52	28800	69	25100	74	25200	78	21600		
20	44	21800	65	21500	72	21000	76	18000	79	14000
25	28	13700	58	13500	67	14000	72	11500	76	12750
30			52	9000	62	9600	68	7500	73	10000
35			44	6300	57	6700	65	5400	71	7300
40			35	4500	52	4900	61	4000	68	5400
45			23	3000	46	3600	57	3000	65	4050
50					40	2800	52	2100	62	3000
55					33	1800	47	1400	58	2100
60					23	1000	43	900	55	1400
65									51	900
	0	9000	0	2100	0	500				
	630		380		290		240		200	
	810		490		370		300		250	

NOTE: RATINGS ABOVE THE HEAVY LINE ARE BASED ON STRUCTURAL COMPETENCE AND NOT ON MACHINE STABILITY

JIB LOAD CAPACITIES (LBS) FOR ALL BOOM LENGTHS. JIB CAPACITIES ARE FOR MID SPAN OUTRIGGERS (15 FT 8 IN)

LOADED BOOM ANGLE	JIB CAPACITIES ARE FOR MID SPAN OUTRIGGERS (15 FT 8 IN)			
	65°*	70°	75°	80°
FIXED 31 FT JIB	1400	2600	5300	6500
TELESCOPE JIB	RETRACTED 31 FT JIB	1000	2100	4800
	EXTENDED 55 FT JIB	600	1500	2800

DO NOT OPERATE JIBS BELOW THIS ANGLE UNLESS BOOM IS FULLY RETRACTED. SEE NOTE 1. 970276632 B (SHEET 2)

AREA OF OPERATION

360° CAPACITY WORKING AREA WITH MID SPAN AND FRONT BUMPER OUTRIGGERS

15 FT 8 IN MID SPAN MAIN & AUX OUTRIGGERS SPREAD

DEDUCTIONS FROM RATED LOADS FOR HANDLING DEVICES

OVERHAUL BALL: 230 LBS

1-SHEAVE LOADBLOCK: 360 LBS

2-SHEAVE LOADBLOCK: 500 LBS

3-SHEAVE LOADBLOCK: 600 LBS

0° BOOM CAPACITIES

STOWED 1-STAGE JIB LOAD DEDUCTIONS

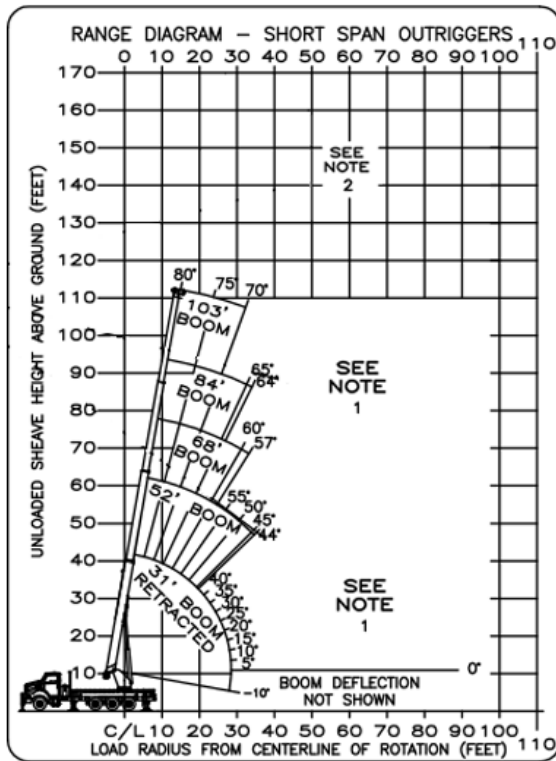
STOWED 2-STAGE JIB LOAD DEDUCTIONS

Note 1: When jib is erected, boom must be fully retracted before lowering below minimum boom with jib angles. Retracted boom with jib has no lifting capacity below a 50 degree angle with full span outriggers and below a 65 degree angle not shown on jib load rating chart.

Note 2: Do not lower boom into this area, instability may occur. Hydraulic pressure may not allow raising the boom without retracting boom first.

AC40-103S | LOAD CHARTS

SHORT SPAN OUTRIGGERS



BOOM LOAD CAPACITIES (LBS) WITH SHORT SPAN OUTRIGGERS (8 FT 2 IN)

LOAD RADIUS (FT)	31 FT BOOM		52 FT BOOM		68 FT BOOM		84 FT BOOM		103 FT BOOM	
	∠	LBS	∠	LBS	∠	LBS	∠	LBS	∠	LBS
5	77	70000								
8	72	37000								
10	68	22500	77	23550						
13	61	13250	73	14000	78	14250				
15	58	9900	71	10650	76	10850	79	11000		
17	53	7500	69	8200	74	8450	78	8550		
20	46	5100	65	5750	71	5950	75	6050	79	6150
25	30	2500	59	3200	67	3400	72	3500	76	3600
30			52	1625	62	1800	68	1900	73	2000
35			44	550	57	750	64	850	70	900

NOTE: RATINGS ABOVE THE HEAVY LINE ARE BASED ON STRUCTURAL COMPETENCE AND NOT ON MACHINE STABILITY

0	1050	SEE NOTE 1				0' BOOM CAPACITIES
630	380	290	240	200	STOWED 1-STAGE JIB LOAD DEDUCTIONS	
810	490	370	300	250	STOWED 2-STAGE JIB LOAD DEDUCTIONS	

JIB LOAD CAPACITIES (LBS) FOR ALL BOOM LENGTHS
JIB CAPACITIES FOR SHORT SPAN OUTRIGGERS

AREA OF OPERATION

360° CAPACITY WORKING AREA WITH SHORT SPAN AND FRONT BUMPER OUTRIGGERS

DEDUCTIONS FROM RATED LOADS FOR HANDLING DEVICES

- OVERHAUL BALL: 230 LBS
- 1-SHEAVE LOADBLOCK: 360 LBS
- 2-SHEAVE LOADBLOCK: 500 LBS
- 3-SHEAVE LOADBLOCK: 600 LBS

DO NOT OPERATE OR ERECT JIBS IN THIS OUTRIGGER CONFIGURATION
SEE NOTE 2

Note 1: Do not lower boom into this area, instability may occur. Hydraulic pressure may not allow raising the boom without retracting boom first.
 Note 2: Do not operate or erect jibs in "Short Span" outrigger configurations.

1 PART LOAD LINE	2 PART LOAD LINE	3 PART LOAD LINE	4 PART LOAD LINE	5 PART LOAD LINE	6 PART LOAD LINE	CAUTION
LOADS UP TO	LOADS UP TO	LOADS UP TO	LOADS UP TO	LOADS UP TO	LOADS UP TO	
12,971 LBS. IWRC XXIP	25,942 LBS. IWRC XXIP	38,913 LBS. IWRC XXIP	51,884 LBS. IWRC XXIP	64,855 LBS. IWRC XXIP	76,000 LBS. IWRC XXIP	
9,080 LBS. ROT. RESISTANT WIRE ROPE	18,160 LBS. ROT. RESISTANT WIRE ROPE	27,240 LBS. ROT. RESISTANT WIRE ROPE	36,320 LBS. ROT. RESISTANT WIRE ROPE	45,400 LBS. ROT. RESISTANT WIRE ROPE	54,480 LBS. ROT. RESISTANT WIRE ROPE	
103 FT + 55 FT JIB	103 FT BOOM	87 FT BOOM	68 FT BOOM	55 FT BOOM	46 FT BOOM	
<p>MAXIMUM BOOM LENGTH AT MAXIMUM ELEVATION WITH RIGGING SHOWN TO REACH THE GROUND</p> <p>SEE OWNERS MANUAL FOR OTHER REEVING OPTIONS With certain boom and hoist tackle combinations, maximum capacities may not be obtainable with standard cable lengths.</p>						



For more complete information on Altec products and services, visit us on the web at www.altec.com. Material and specifications are subject to change without notice. Featured units in photos may include optional features. Please contact an Altec representative for all available options. Charts published herein are intended to be a guide only and should not be construed to warrant application for lifting purposes. Consult supplied operation manual for further details. Altec® and the Altec logo are registered trademarks of Altec Inc. in the United States and various other countries and may not be used without permission.
 © 2015 Altec Inc. All Rights Reserved.

Altec
 Altec.com/cranes
 866.966.2969
 sales@altec.com