



FOR NEW EQUIPMENT SALES, CALL  
**866.966.2969**  
TO SPEAK WITH AN ALTEC REPRESENTATIVE  
or visit us online at [altec.com](http://altec.com)

 **Altec**<sup>®</sup>  
TELESCOPIC CRANE

## STANDARD FEATURES

- Altec LMAP (Load Moment & Area Protection) System
  - » Rated Capacity Limiter
  - » Displays: Boom Length, Boom Angle, Load on Hook, Percent of Rated Capacity
  - » Operator Defined Audible Alarm Set-Points for Boom Angle, Length and Rotational Position
- Dual Entry 20° Tilt Cab with Heater and A/C
- Outrigger Boom Interlock System
- Outrigger Motion Alarm
- Winch Drum Rotation Indicator
- Anti-Two Block Device
- Rotation Resistant Wire Rope
- Winch Control at Load Hook Stow Point
- Hydraulic Oil Cooling System

## OPTIONS

- ANSI A92.2 Compliant Aerial Operation Package
  - » 2-Man, Fixed Steel Platform, 800 lb (362.8 kg) Capacity
  - » Radio Remote Controls
  - » Fall Protection
- 1-Piece 31 ft (9.4 m) Jib
- 2-Piece 55 ft (16.7 m) Jib, 31 ft (9.4 m) Retracted
- Hydraulic Tool Circuit at Tail Shelf

## RECOMMENDED FEATURES

- Wheel Chocks
- Outrigger Pads

## CRANE SPECIFICATIONS

Maximum Lift Capacity	90,000 lb (40,823 kg)
Boom Length (5-Section)	127 ft (38.7 m)
Powered Sheave Height	135 ft (41.2 m)
Maximum Sheave Height	189 ft (57.6 m)
Stowed Travel Height	13.25 ft (4.04 m)
Vehicle Travel Length	39.9 ft (12.2 m)
Two Speed Winch Capacity	15,000 lb (6,803 kg)
3 Position Out-and-Down Outriggers	
Full Span	24 ft (7.3 m)
Mid Span	17.9 ft (5.4 m)
Short Span	8 ft (2.4 m)
Control System	Pilot-Operated, Hydraulic

## LOAD MOMENT AND AREA PROTECTION

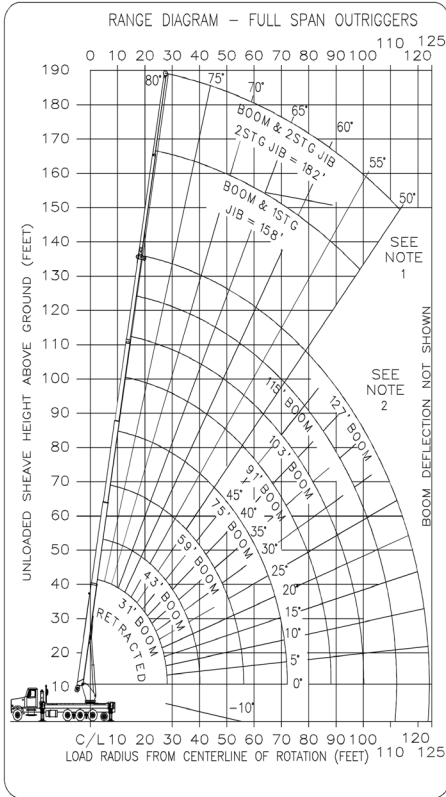


The convenient LMAP menu navigation with an intuitive user interface displays load on hook, rated capacity percentage, boom length and angle, load radius, and operator-defined protection with audible alarms. While the intuitive display and user interface are unique to Altec, the system's hardware consists of common "off-the-shelf" components that were critically selected for their performance and serviceability.

UNIT		RECOMMENDED CHASSIS DIM				MINIMUM RECOMMENDED CHASSIS SPECIFICATIONS				
Model	Rear Axle	CA (in)	WB (in)	AF (in)	AS (in)	Front Axle Rating (lb)	Rear Axle Rating (lb)	GVWR (lb)	Frame Sec Modulus (in <sup>3</sup> )	Frame RBM (in-lb)
AC45-127S	Tri	181	268	165	110	20,000	66,000	86,000	consult factory	



# LOAD CHART - FULL SPAN OUTRIGGERS



BOOM LOAD CAPACITIES IN LBS. WITH FULL SPAN OUTRIGGERS (24 FT)

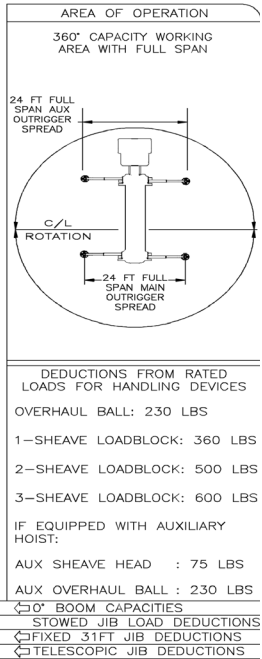
LOAD RADIUS (FT)	31 FT BOOM	43 FT BOOM	59 FT BOOM	75 FT BOOM	91 FT BOOM	103 FT BOOM	115 FT BOOM	127 FT BOOM
7	73 9000	78 36000						
8	71 82100	77 36200						
10	67 71100	74 36500	79 35800					
12	63 62700	71 38700	77 36100	80 35500				
15	57 50800	67 39700	74 38100	78 35700	80 22000			
20	44 36200	59 36900	69 37300	74 33200	78 22000	79 17100	80 12850	
25	28 27400	51 28100	63 28600	70 28800	74 20700	77 17100	78 12600	80 10000
30		41 22300	57 22800	66 23000	71 18000	74 16800	76 12500	77 10000
35		28 17700	51 18200	61 18400	68 15900	71 14500	74 12400	75 10000
40			44 14500	57 14800	64 14200	68 12700	71 11400	73 10000
45			36 11800	52 12200	60 12100	65 11200	68 10000	71 9050
50			27 9800	46 10100	57 10100	62 9900	65 8800	69 8100
55				41 8500	53 8500	58 8500	63 8000	66 7200
60				35 7200	48 7200	55 7250	60 7200	63 6400
65				27 6100	44 6100	51 6200	57 6200	61 5700
70				15 5100	39 5200	47 5300	53 5400	58 5100
75					33 4500	43 4500	50 4600	55 4450
80					26 3800	39 3850	46 3950	52 4000
85					17 3200	34 3300	43 3400	49 3400
90						28 2800	39 2850	46 2900
95						20 2350	34 2400	42 2450
100						5 1900	29 2000	39 2050
105							22 1600	34 1700
110							13 1250	30 1350
115								24 1050
120								17 750
	0 22000	0 14000	0 8200	0 4700	0 2850	0 1900	0 1100	0 300
	500	415	300	280	250	210	190	150
	1000	770	560	420	350	315	280	250

NOTE: RATINGS ABOVE THE HEAVY LINE ARE BASED ON STRUCTURAL COMPETENCE AND NOT ON MACHINE STABILITY

JIB LOAD CAPACITIES (LBS) FOR ALL BOOM LENGTHS. JIB CAPACITIES ARE FOR FULL SPAN OUTRIGGERS (24 FT)

TELESCOPING JIB	LOADED BOOM ANGLE							
	50°*	55°	60°	65°	70°	75°	80°	
FIXED 31 FT JIB	1300	1800	2400	3400	4000	4000	4000	
RETRACTED 31 FT JIB	1000	1700	2400	3400	4000	4000	4000	
EXTENDED 55 FT JIB	700	1300	1800	2500	2600	2600	2600	

\* DO NOT OPERATE JIBS BELOW THIS ANGLE UNLESS BOOM IS FULLY RETRACTED. SEE NOTE 1



**Note 1:** When jib is erected, boom must be fully retracted before lowering below minimum boom with jib angles. Retracted boom with jib has no lifting capacity below a 50 degree angle with full span outriggers and below a 65 degree angle not shown on jib load rating chart.

**Note 2:** Do not lower boom into this area, instability may occur. Hydraulic pressure may not allow raising the boom without retracting boom first.

## FRONT WINCH CONTROL

The lower winch control reduces slip/trip/fall hazards because the load hook can be disconnected without climbing to the crane controls.



## DUAL ENTRY CAB

Altec's dual entry cab provides safe access/egress throughout the entire range of rotation. The 20 degree tilt feature maximizes the viewing spectrum on the job site.



## LMI REEL

The load moment indicator (LMI) reel is mounted at boom heel and protected by a metal cover while the A2B cable is routed through the boom, providing better reliability.



**866-966-2969**  
**sales@altec.com**

AIOSAC45127S-1214-v1-r2

210 Inverness Center Drive  
Birmingham, AL 35242  
Fax 205.449.4774  
www.altec.com

For more complete information on Altec products and services, visit us on the web at [www.altec.com](http://www.altec.com).

© 2016 Altec Inc  
All Rights Reserved

Material and specifications are subject to change without notice. Featured units in photos may include optional features. Please contact an Altec representative for all available options.

Altec® and the Altec logo are registered trademarks of Altec Inc in the United States and various other countries and may not be used without permission.

