



FOR NEW EQUIPMENT SALES, CALL  
**866.966.2969**  
TO SPEAK WITH AN ALTEC REPRESENTATIVE  
or visit us online at [altec.com](http://altec.com)

 **Altec**  
TELESCOPIC CRANE

*Courtesy of CraneMarket.com*

## STANDARD FEATURES

- Altec LMAP (Load Moment & Area Protection) System
  - » Rated Capacity Limiter
  - » Displays: Boom Length, Boom Angle, Load on Hook, Percent of Rated Capacity
  - » Electronic Working Area Definition
  - » Operator Defined Audible Alarm Set-Points for Boom Angle, Length and Rotational Position
- Outrigger Boom Interlock System
- Outrigger Motion Alarm
- Emergency Stop at Operator Controls
- Anti-Two Block Device

## OPTIONS

- 2-Piece Jib: 44 ft (13.4 m) Jib, 26 ft (7.9 m) Retracted
- 2-Man Steel Platform
- Load Blocks for Multiple Parts of Line
- Hydraulic Tool Circuit at Tail Shelf
- Pintle Hitch
- Winch Drum Rotation Indicator
- Utility Tool Boxes
- Rotation Resistant Wire Rope

Recommended equipment, available through Altec Supply, include wheel chocks, a fall protection system, radio remote control and outrigger pads.

## CRANE SPECIFICATIONS

Maximum Lift Capacity	52,000 lb (23,588 kg)
Boom Length (4-Section)	103 ft (31.4 m)
Maximum Sheave Height with 2-Stage Jib	113 ft (34.4 m)
Stowed Travel Height	13.3 ft (4.0 m)
Vehicle Travel Length	38 ft (11.6 m)
Outriggers	Primary - Pivoting Beam; Auxiliary - Out-and-Down
Rotation	370°, Non-Continuous
Control System	Pilot-Operated, Hydraulic
ASME B30.5 Compliant	

## LOAD MOMENT AND AREA PROTECTION



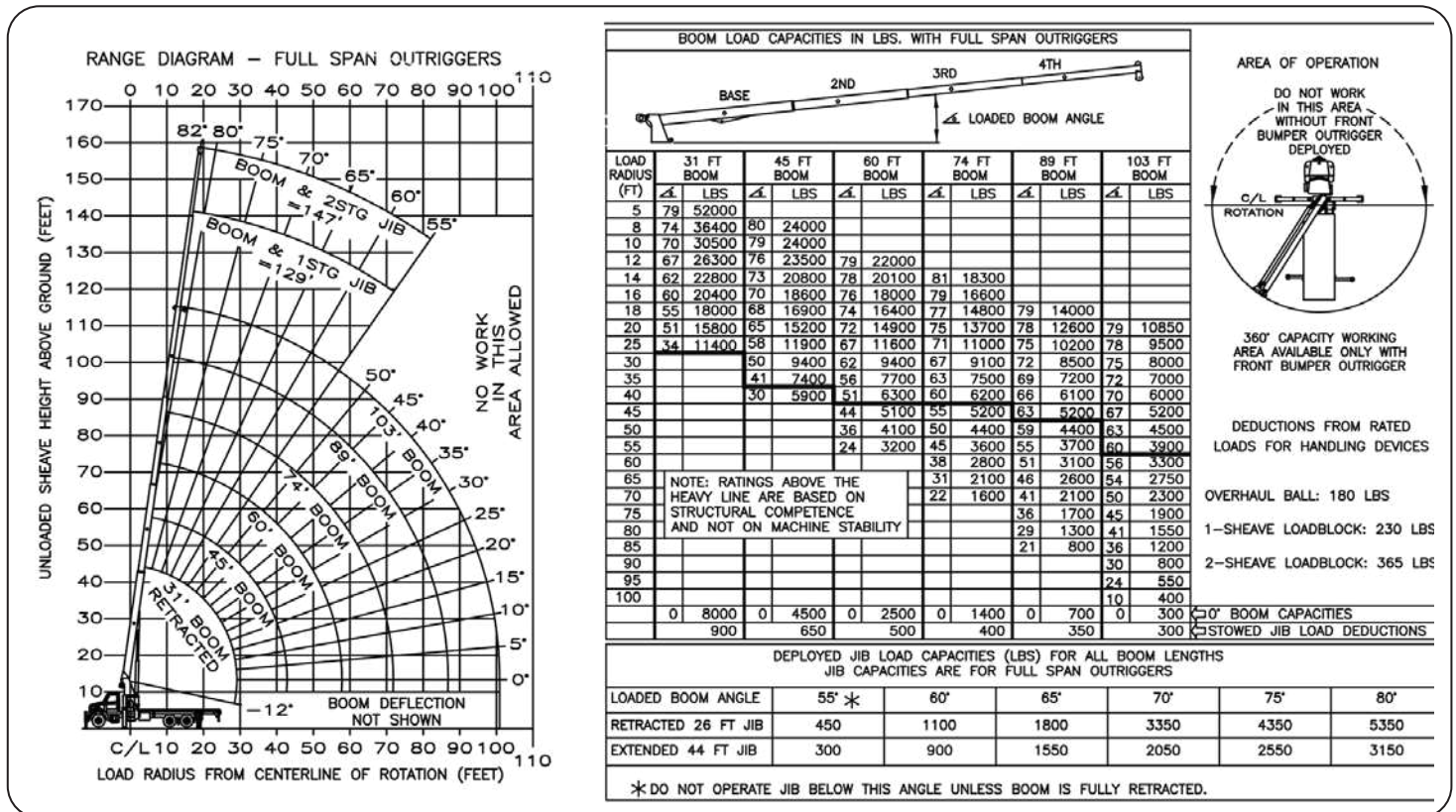
The convenient LMAP menu navigation with an intuitive user interface displays load on hook, rated capacity percentage, boom length and angle, load radius, and operator-defined protection with audible alarms. While the intuitive display and user interface are unique to Altec, the system's hardware consists of common "off-the-shelf" components that were critically selected for their performance and serviceability.

UNIT		RECOMMENDED CHASSIS DIM				MINIMUM RECOMMENDED CHASSIS SPECIFICATIONS				
Model	Rear Axle	CT (in)	WB (in)	AF (in)	Rear Axle Spread (in)	Front Axle Rating (lb)	Rear Axle Rating (lb)	GVWR (lb)W	Frame Sec Modulus (in <sup>3</sup> )	Frame RBM (in-lb)
AC26-103B	Tandem	190	258	130	54	20,000	40,000	60,000	consult factory	
AC26-103R	Tandem	192	261	130	54	20,000	40,000 + 17,500	70,000	consult factory	
AC26-103S	Tandem	192	262	110	54	20,000	40,000	60,000	consult factory	





## LOAD CHART (AC26-103B) - FULL SPAN OUTRIGGERS



**Note 1:** When jib is erected, boom must be fully retracted before lowering below minimum boom with jib angles. Retracted boom with jib has no lifting capacity below a 50 degree angle with full span outriggers and below a 65 degree angle not shown on jib load rating chart.

Charts published herein are intended to be a guide only and should not be construed to warrant application for lifting purposes. Consult supplied operation manual for further details.



### DUAL STAND-UP WALK THROUGH CONTROL STATIONS

Dual walk-through controls for the AC26-103B and AC26-103R models allow the operator the ability to work from either side of the bed for best visibility depending on application providing an unobstructed view of the bed and work area. In addition, the hand guards assist in providing three points of contact for users as they exit or enter the control station for direct access to the bed, or returning to the control from the bed.

### OUTRIGGER CONTROLS AT TAILSHELF

Outrigger controls at the tailsheaf allow the operator to access the controls from either side of the bed for best visibility of the contact surface which reduces the chance of a crushing hazard while deploying and retracting outriggers.



### LOWER WINCH CONTROL

The lower winch control helps prevent boom damage by reducing the flow pressure to the winch during stowage. The operator can control the load block or ball while winching up or down during set up and stowage without the need to access the upper control station, reducing slip/trip/fall hazard exposure.



**866-966-2969**  
**sales@altec.com**

AIOSAC26103-720

33 Inverness Center Parkway  
Birmingham, AL 35242  
Fax 205.449.4774  
[www.altec.com](http://www.altec.com)

For more complete information on Altec products and services, visit us on the web at [www.altec.com](http://www.altec.com).

© 2020 Altec Inc  
All Rights Reserved

Material and specifications are subject to change without notice. Featured units in photos may include optional features. Please contact an Altec representative for all available options. Charts published herein are intended to be a guide only and should not be construed to warrant application for lifting purposes. Consult supplied operation manual for further details.

Altec® and the Altec logo are registered trademarks of Altec Inc in the United States and various other countries and may not be used without permission.

