



FOR NEW EQUIPMENT SALES, CALL
866.966.2969
TO SPEAK WITH AN ALTEC REPRESENTATIVE
or visit us online at altec.com

 **Altec**
DUAL-RATED SOLUTION

STANDARD FEATURES

- Altec LMAP (Load Moment & Area Protection) System with Smart-Zone Rating to Allow for Asymmetric Outrigger Setups
 - » Rated Capacity Limiter
 - » Displays: Boom Length, Boom Angle, Load on Hook, Percent of Rated Capacity
 - » Operator Defined Audible Alarm Set-Points for Boom Angle, Length and Rotational Position
- E-series Electric Over Hydraulic Control System
- Dual Entry 20° Tilt Cab with Heater and A/C
- Outrigger Boom Interlock System
- Outrigger Motion Alarm
- Winch Drum Rotation Indicator
- Anti-Two Block Device
- Winch Control and Boom Telescope Control at Load Hook Stow Point
- Hydraulic Oil Cooling System
- 15,000 lb 2-Speed High-Performance Piston Winch
- Rotation Resistant Wire Rope

OPTIONS

- ANSI A92.2 Compliant Aerial Operation Package
 - » Quick Attach 2-Man Platform, 1,200 lb (544.3 kg) capacity
 - » Radio Remote Controls
 - » Fall Protection
- 2-Piece 49 ft (14.9 m) Jib, 28 ft (8.5 m) Retracted
- Composite Reach Extension, 6 ft (1.8 m) Fixed
- Platform Hydraulic Tools & Intensifier Package

Recommended safety equipment, available through Altec Supply, include wheel chocks and outrigger pads.

GENERAL SPECIFICATIONS

Boom Length (6-Section)	152 ft (46.3 m)
Stowed Travel Height	13.2 ft (4.01 m)
Vehicle Travel Length	40 ft (12.19 m)
2 Position Out-and-Down Outriggers	
Full Span	24 ft (7.3 m)
Mid Span	17.9 ft (5.4 m)
Control System	Electric Over Hydraulic

CRANE SPECIFICATIONS

Maximum Lift Capacity	80,000 lb (36,287.4 kg)
Powered Sheave Height	161 ft (49.1 m)
Maximum Sheave Height with Telescopic Jib	207 ft (63.1 m)
Two Speed Winch Capacity	15,000 lb (6,803 kg)

ASME B30.5 Compliant

AERIAL SPECIFICATIONS

Platform Capacity	1,200 lb (544.3 kg)
Platform Working Height	167 ft (51 m)
with Telescopic Jib	215 ft (65.6 m)
with Telescopic Jib and Composite Reach Extension	222 ft (67.7 m)

ANSI A92.2 Compliant

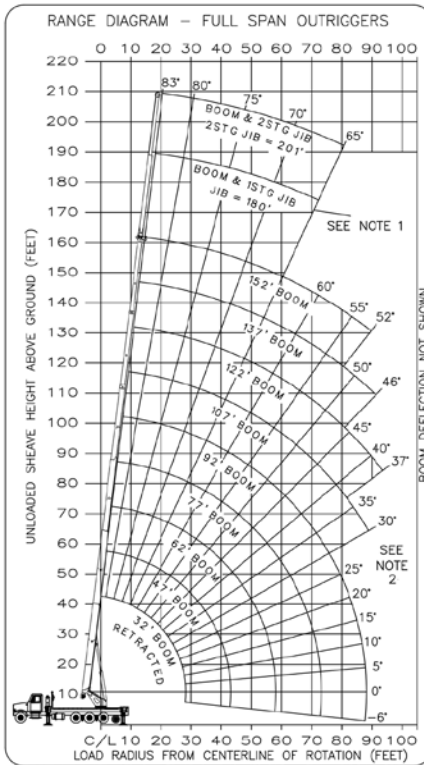
UNIT		RECOMMENDED CHASSIS DIM				MINIMUM RECOMMENDED CHASSIS SPECIFICATIONS				
Model	Rear Axle	CA (in)	WB (in)	AF (in)	AS (in)	Front Axle Rating (lb)	Rear Axle Rating (lb)	GVWR (lb)	Frame Sec Modulus (in ³)	Frame RBM (in-lb)
AC40E-152S	Tri with tag axle	186	273	170	54	20,000	66,000	86,000	consult factory	



LOAD MOMENT AND AREA PROTECTION

The convenient menu navigation with an intuitive user interface displays load on hook, rated capacity percentage, boom length and angle, load radius, and operator-defined protection with audible alarms. Additionally, the AC40E comes standard with Smart-Zone Rating functionality, which uses the outrigger positions to determine where the machine has capacity for the load on hook. This provides an extra layer of safety to help prevent instability during asymmetric outrigger setups. While the display and user interface are unique to Altec, the system's hardware consists of common "off-the-shelf" components that were critically selected for their performance and serviceability.

LOAD CHART - FULL SPAN OUTRIGGERS

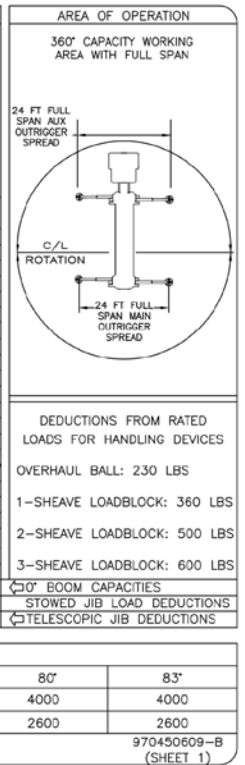


BOOM LOAD CAPACITIES IN LBS. WITH FULL SPAN OUTRIGGERS (24 FT)

LOAD RADIUS (FT)	32 FT BOOM	47 FT BOOM	62 FT BOOM	77 FT BOOM	92 FT BOOM	107 FT BOOM	122 FT BOOM	137 FT BOOM	152 FT BOOM
7	72 80000	78 21100	81 21000						
8	70 75000	76 21100	80 21000						
10	66 66500	74 21100	78 21000	80 20900					
12	62 58500	71 21100	76 21000	79 20900	81 20800				
15	56 47700	67 21100	73 21000	77 20900	79 20800	82 17200			
20	43 29350	60 21100	68 21000	73 20900	76 20800	79 17200	81 14100	82 10000	
25	27 18050	53 21100	63 21000	69 20900	73 20400	76 15700	78 14100	80 10000	81 8000
30		44 18600	58 19100	65 19400	70 18900	74 13800	76 13000	78 10000	79 8000
35		34 14600	52 15200	61 15500	66 15700	71 11800	74 10800	76 10000	78 8000
40		20 11800	45 12400	56 12700	63 12800	68 10600	71 9900	74 9450	76 8000
45			38 10100	51 10400	59 10600	65 9600	69 9000	72 8500	74 8000
50			31 8250	47 8600	56 8800	62 8800	66 8200	70 7650	73 7050
55			19 6700	41 7100	52 7300	59 7400	63 7300	67 6650	70 6050
60				35 5500	47 5800	55 6000	61 6100	65 5800	68 5250
65				28 4200	43 4500	52 4700	58 4800	62 4900	66 4550
70				17 3200	38 3500	48 3600	55 3800	60 3900	64 3900
75					32 2600	44 2800	51 2900	57 3000	61 3100
80					25 1900	40 2100	48 2200	54 2300	59 2300
85					16 1200	35 1400	45 1600	51 1600	57 1700
90						30 900	41 1000	49 1100	54 1200
95							37 600	46 600	52 700
0	9400	0 8000	0 4700	0 2500	0 800	SEE NOTE 2			
	1130	790	600	480	400	350	300	270	240

NOTE: RATINGS ABOVE THE HEAVY LINE ARE BASED ON STRUCTURAL COMPETENCE AND NOT ON MACHINE STABILITY

NOTE: SEE NOTE 2



JIB LOAD CAPACITIES (LBS) FOR ALL BOOM LENGTHS. JIB CAPACITIES ARE FOR FULL SPAN OUTRIGGERS (24 FT)

TELESCOPING	LOADED BOOM ANGLE				
	65°*	70°	75°	80°	83°
RETRACTED 28 FT JIB	1700	3100	4000	4000	4000
EXTENDED 49 FT JIB	1400	2600	2600	2600	2600

* DO NOT OPERATE JIBS BELOW THIS ANGLE UNLESS BOOM IS FULLY RETRACTED. SEE NOTE 1.

Note 1: When jib is erected, boom must be fully retracted before lowering below minimum boom with jib angles. Retracted boom with jib has no lifting capacity below a 50 degree angle with full span outriggers and below a 65 degree angle not shown on jib load rating chart.

Note 2: Do not lower boom into this area, instability may occur. Hydraulic pressure may not allow raising the boom without retracting boom first.

Charts published herein are intended to be a guide only and should not be construed to warrant application for lifting purposes. Consult supplied operation manual for further details.



QUICK ATTACH PLATFORM FOR AERIAL OPERATION

Altec's patent-pending quick attach platform reduces the overall time required to install the platform on uneven ground. The platform interfaces with the light-weight bracket that seamlessly interfaces and secures to the main boom, the end of the jib, or to the optional composite reach extension. Once the platform is in position on the ground and the bracket is attached to either of the above listed locations, the operator can simply extend the boom until the bracket engages the platform. The last step only requires a member of the ground-crew to quickly engage the spring-loaded, high visibility pins.

E-SERIES CONTROLS

The E-series control system is a standard feature on the AC40E. Included is a redesigned swing system and state of the art CAN based hydraulic control system. This system ensures that motion starts and stops are extremely smooth with unparalleled meterability and swing control as well as best-in-class multifunction performance.



DUAL ENTRY CAB

Altec's patented dual entry cab provides safe access /egress throughout the entire range of rotation. The 20° tilt feature maximizes the viewing spectrum on the job site.



ADVANCED RADIO REMOTE CONTROL

This state-of-the-art remote pairs seamlessly with the "E-series" control system and offers the same meterability and control as if operating from the riding seat. The radio remote is equipped with an LCD screen used as a full LMAP readout in order to keep track of all of the unit's operating parameters from the platform.



866-966-2969
sales@altec.com

AIOSAC40E152S-421-v1

33 Inverness Center Parkway
Birmingham, AL 35242
Fax 205.449.4774
www.altec.com

For more complete information on Altec products and services, visit us on the web at www.altec.com.

© 2021 Altec Inc
All Rights Reserved

Material and specifications are subject to change without notice. Featured units in photos may include optional features. Please contact an Altec representative for all available options. Charts published herein are intended to be a guide only and should not be construed to warrant application for lifting purposes. Consult supplied operation manual for further details.

Altec® and the Altec logo are registered trademarks of Altec Inc in the United States and various other countries and may not be used without permission.

